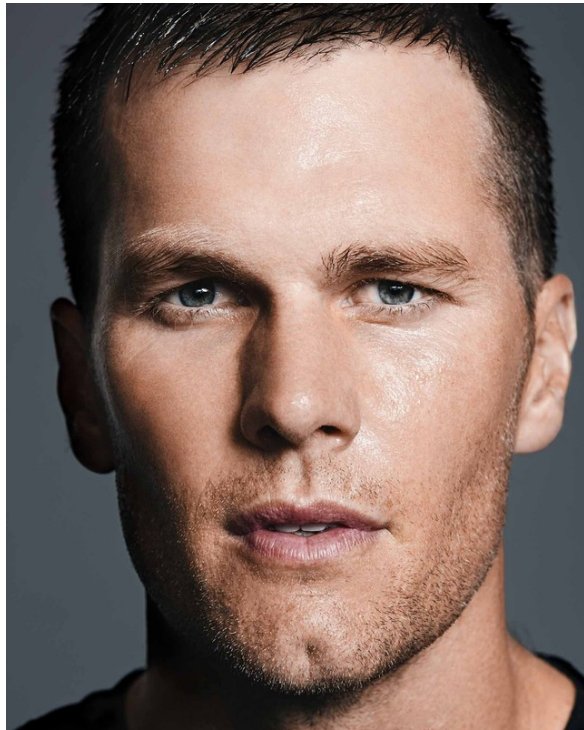


Art Department



Kevin O'Brien

www.art-dept.com

Art Department



Kevin OBrien

www.art-dept.com

Art Department



Kevin OBrien

www.art-dept.com

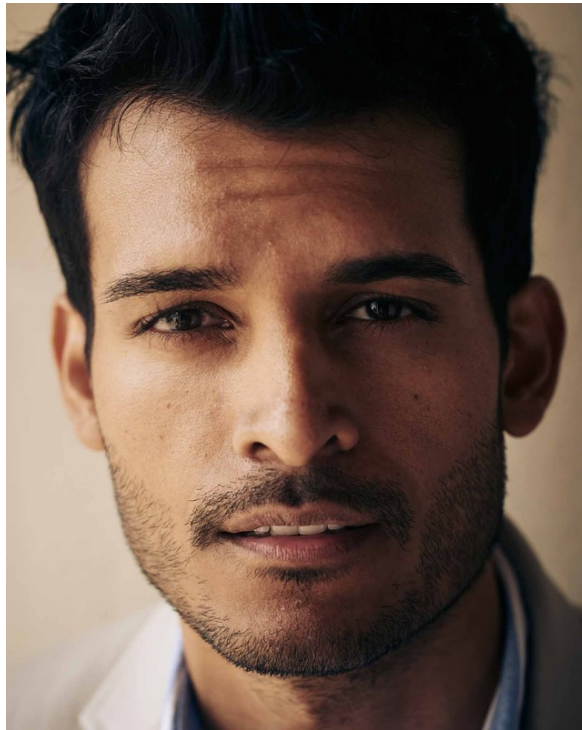
Art Department



Kevin OBrien

www.art-dept.com

Art Department



Kevin OBrien

www.art-dept.com

Art Department



Kevin OBrien

www.art-dept.com

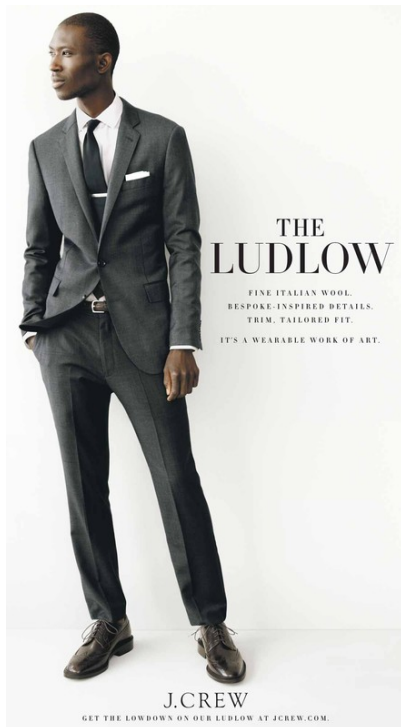
Art Department



Kevin OBrien

www.art-dept.com

Art Department



Kevin OBrien

www.art-dept.com

Art Department



Kevin OBrien

www.art-dept.com

Art Department



Kevin OBrien

www.art-dept.com

Art Department



Kevin OBrien

www.art-dept.com

Art Department



Kevin OBrien

www.art-dept.com

Art Department



Kevin OBrien

www.art-dept.com

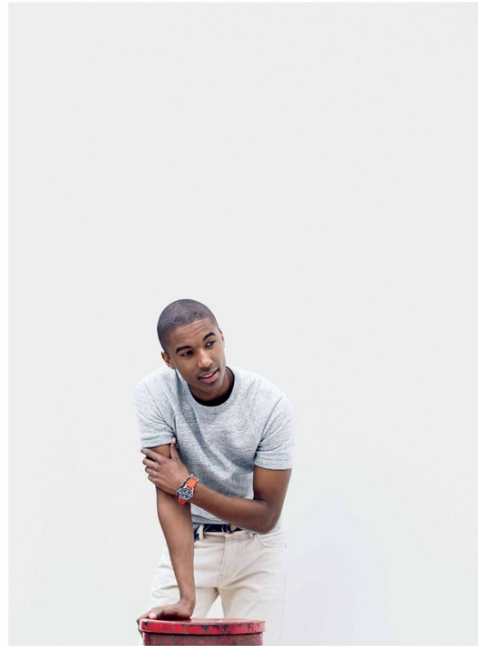
Art Department



Kevin OBrien

www.art-dept.com

Art Department



Kevin OBrien

www.art-dept.com

Art Department



Kevin OBrien

www.art-dept.com

Art Department



Kevin OBrien

www.art-dept.com

Art Department



Kevin OBrien

Art Department



Kevin OBrien

www.art-dept.com

Art Department



Kevin OBrien

www.art-dept.com

Art Department



Kevin OBrien

www.art-dept.com

Art Department



SEAN KAVANAGH-DOWSETT
Restaurateur

CHARLES RENFRO
Architect

MICHAEL CHERNOW
Restaurateur

KEVIN SANDERS
Journalist/Author

TED KATO
Business Analyst

JENKE AHMED
TALU
Creative Director



THE FJÄLLRÄVEN GREENLAND JACKET, CRAFTED IN EXCLUSIVE G-1000® FABRIC, A SPECIAL COTTON THAT BECOMES MORE WIND- AND WATER-RESISTANT THE WORSE THE WEATHER GETS. (HOW COOL IS THAT?)

FJÄLLRÄVEN® JACKETS
Crafted in Åre, Sweden for "active" use, this iconic mountaineering brand was founded over 60 years ago and is known the world over for simple, functional designs that stand the test of time. Information: www.fjallraven.com.
A: greenland Fully lined. Colors: 9656 \$199, 9658 \$239, 9659 \$239.
B: LEVIN® TRUCKER JACKET Based on a 1977 style from the Levin® archive (6-in-1 buttonless take with the 50°F jacket). Cotton. Import. Dark navy jacket. XS-XL. \$279. \$118.
C: BROKEN-IN CHENOS Washed twill-cotton twill. Import. Waists 29-38, 38, 40. More colors, color exceptions and inseams, see www.com.com.
D: urban slim fit. Slim below waist, slimmer through hip and thigh, with a narrower leg. Waists 29-38, 38, 40. \$148. \$64.
E: bootcut fit. Slim on hips, straight through hip and thigh, with a bootcut leg. www.com.com only. \$179. \$89.99.
F: relaxed fit. Slim on hips, relaxed through hip and thigh, with a slightly wider leg. www.com.com only. \$165. \$82.50.
G: regular fit. Slim on hips, straight through hip and thigh, straight leg. \$69.99, \$34.99.
H: classic fit. Slim on hips, slim through hip and thigh, with a narrow leg. Waists 29-38, 38, 40. \$189. \$94.99.
I: D: ALDEN® FOR A CREW 405 HOY BOOTS A cult classic for decades, the iconic 405 "hoy" boot made famous by Indiana Jones is constructed exclusively for us with a slanted welt. Handmade in Cambodia leather, USA. Dark brown. Whole and half sizes: EE-2M. These shoes were shaped over a 30-day break-in and are one half size larger than regular U.S. sizes. \$149. \$69.
J: E RED WING® WABASHA CHUKKA BOOTS These hand-stitched moccasin-style boots are crafted in the U.S. from the finest S.B. Don-derstroop leather and wadded canvas (6 years to a beautiful patina with age). USA. Olive brown. Whole and half sizes: T-12M. www.com.com only. \$295. \$249.
K: DOWN WITH LINEN® GENTLE JAMES® MANSFIELD II NAUTICAL TEE page 62
L: TIME® VINTAGE FIELD ARMY WATCH page 97.



THE LUDLOW BLAZER

LUDLOW BLAZERS Four-season, world-class wool fabric by Loro Piana. Ludlow, our most modern fit, with a tailored cut and a trim silhouette. Import. Navy, two-button with double-vented back. (6-in-1) Fully lined. SHORT 30, 32, 34, 36, 38, 40; REGULAR 36, 38-42, 44, 46; LONG 42, 44, 46. www.com.com only. \$324. \$265.
two-button. Partially lined. SHORT 28, 30, 32, 34, 36, 38, 40; REGULAR 34, 36, 38, 40, 42, 44, 46; LONG 42, 44, 46. \$199. \$165.
three-button. Partially lined. REGULAR 36, 38-42, 44, 46; LONG 42, 44, 46. \$179. \$145.
cashmere. Cashmere. Full. Bomberg lining. SHORT 30, 32, 34, 36, 38, 40; REGULAR 36, 38, 40, 42, 44; LONG 42, 44, 46. \$149. \$119.
STANTON PAINTS Cotton. Import. Color exceptions and inseams, see www.com.com.
REGULAR \$119 \$95.25
LONG \$129 \$103.25
REGULAR \$119 \$95.25
LONG \$129 \$103.25
classic fit. (6-in-1) Slim on hips, slim through hip and thigh, with a narrow leg. Waists 29-38, 38, 40. \$149. \$119.
urban slim fit. Slim below waist, slimmer through hip and thigh, with a narrower leg. Waists 29-38, 38, 40. www.com.com only. \$199. \$165.
cargo urban slim fit. Slim below waist, slimmer through hip and thigh, with a narrower leg. Waists 29-38, 38, 40. www.com.com only. \$229. \$195.
4:8 slim fit. Slim below waist, slimmer through hip and thigh, with a narrower leg. Cotton. chinos. Waists 29-38, 44-46. \$175.
LEATHER ROLLER-BUCKLE BELT. Leather. Import. Extra sizes: 30-40. \$99. \$79.99.
ON/O LEATHER MACHINIST BOOTS Italian-oid leather. Made in Italy. Whole and half sizes: 4-12M, 12M. Choose being Vivon, please order by size smaller than your regular size. Chester brown. (6-in-1) www.com.com only. \$279. \$148.
C2A brown. \$99. \$64.
006 | www.com.com

JACK KNOWS BEST: "TODD'S WRENCH COMES TO LIFE. HOW WIDE FOR MARCHIONI BURNHOUSE STREET SUGGESTS YOU SHOULD GO TO www.com.com."



THE ITALIAN WOOL LUDLOW SUIT

LUDLOW SUITING Ludlow, our most modern fit, with a tailored cut and a trim silhouette. Import. www.com.com
FALMAY WOOL Four-season, world-class wool fabric by Loro Piana. www.com.com
JACKETS Fully lined. SHORT 30, 32, 34, 36, 38, 40; REGULAR 36, 38, 40, 42; LONG 42, 44, 46, 48. Two-button with center vent. www.com.com only. \$139. \$115.
two-button with double-vented back. 28-30M \$45, 31-33M \$49.99.
three-button with center vent. Not available in 28M, 31R. \$64.99 \$49.99.
slim (6-in-1) Slim, more tailored fit. Straight through hip and thigh, with a narrow leg. Fully lined. Waists 29-38, 38, 40, 42. Inseams, see www.com.com. \$149. \$119.
slim-gent. Extra slim fit. Slim below waist, slimmer through hip and thigh, with a narrower leg. Partially lined. Waists 29-38, 38, 40, 42. Inseams, see www.com.com. www.com.com only. \$169. \$135.
vest Fully lined. XS-XL. www.com.com only. \$169. \$135.
WOOL HERRINGBONE Flannel. Italian wool from Loro Piana (100% wool). \$229, one of the color mills in Italy. www.com.com
two-button jacket with double-vented back. Full Bomberg lining. SHORT 30, 32, 34, 36, 38, 40; REGULAR 36, 38, 40, 42; LONG 42, 44, 46. \$179. \$145.
slim Slim, more tailored fit. Straight through hip and thigh, with a narrow leg. Partially lined. Waists 29-38, 38, 40, 42. Inseams, see www.com.com. \$199. \$165.
DICKIES® BUDDY CAMPUS 8 BREAKERS More than 30 years after its introduction, Dickies® Campus 80 makes a classic a cult favorite and a staple of modern street wear. Smooth-lined aluminum base. Washed and full sizes T-12M, 12M. \$129. \$95.
3:5 with CARVEN STRIPE 1:5 DITTO premium. WHITE LEVIN® POCKET SQUARE 1:5 with LINEN. TIME® VINTAGE FIELD ARMY WATCH page 97. www.com.com only. www.com.com only. \$199. \$165.

Kevin O'Brien

www.art-dept.com

Art Department



THE ITALIAN WOOL ALDRIDGE SUIT

ALDRIDGE SUITING Our classic cut, destined to be a wardrobe essential. Import.

ITALIAN WOOL (50-hin) Four-season world-class wool fabric by Loro Piana.

JACKETS WITH CENTER VENT Fully lined. Import. 38, 40, 42, 44, 46. **REGULAR** 38, 40, 42, 44, 46. **LONG** 42, 44, 46.

two buttons Catalog/jcrew.com only. **1650N \$425** ☐

three buttons Available in select stores. **1650N \$425** ☐

point Straight through hip and thigh, with a straight leg. Partially lined. **Wants** 28-30, 30, 32, 34, 36, 38, 40, 42. **Imports**, see jcrew.com. **1650N \$225**

ITALIAN CHINO Smooth cotton tail from Italy's storied Caspino mill (est. 1777). Catalog/jcrew.com only.

JACKETS WITH CENTER VENT Fully lined. Import. 38, 40, 42, 44, 46. **REGULAR** 38, 40, 42, 44, 46. **LONG** 42, 44, 46.

two buttons **1650N \$425** ☐

three buttons Not available in store. **1650N \$425** ☐

point Straight through hip and thigh, with a straight leg. **Wants** 28-30, 30, 32, 34, 36, 38, 40, 42. **Imports**, see jcrew.com. **1650N \$195**

SPREAD-COLLAR REGULAR-FIT DRESS SHIRT IN WHITE 100% heavy cotton. Import. **1650N \$45** ☐

DRAPER SMALL HANDLEY HANKERCHIEF Straight English Draper. London's Draper for his heritage designs and classic fine hand-made Italian wool and silk. Made in Italy. **1650N \$15** ☐

CLASSIC LEATHER PLAZAQUE BRET Leather. Import. **1650N \$225** ☐

GIVROD LEATHER SHOES Italian leather with a stitched-leather sole (not a shock of well-made pair of shoes). Made in Italy. **1650N \$225** ☐



OUR ESSENTIAL CHINOS + THE REPP PIQUE POLO = A TOTAL NO-BRAINER

REPP PIQUE POLOS A classic in clean-cut cotton pique. Import. Color exceptions, see jcrew.com. Catalog/jcrew.com only.

short sleeve (50-hin) **5-XXXL** **1650N \$29** or **2 for \$60**. **1650N \$29** or **2 for \$60**. **1650N \$29** or **2 for \$60**.

short sleeve in tailored fit **XXL, XXXL** **1650N \$29** or **2 for \$60**. **1650N \$29** or **2 for \$60**.

long sleeve **5-XXXL** **1650N \$45** or **2 for \$70**. **1650N \$45** or **2 for \$70**.

ESSENTIAL CHINOS They're practically custom. You pick the fit, cut and modern, down to the half inch. Cotton twill, ripstop, indigo, see jcrew.com. Catalog/jcrew.com only.

urban slim fit (50-hin) Slim below waist, slimmer through hip and thigh, with a narrower leg. **Wants** 28-30, **2450N \$69** ☐

regular fit Slim on hips, straight through hip and thigh, with a straight leg. **Wants** 28-30, 30, 32, 34, 36, 38, 40, 42. **1650N \$45** ☐

relaxed fit Slim on hips, relaxed through hip and thigh, with a straight leg. **Wants** 28-30, 30, 32, 34, 36, 38, 40, 42. **1650N \$45** ☐

classic fit Slim on hips, slim through hip and thigh, with a narrower leg. **Wants** 28-30, 30, 32, 34, 36, 38, 40, 42. **1650N \$45** ☐

grand fit Slim on hips, relaxed through hip and thigh, roomier fit, with a fuller leg. Not available in certain shops. **Wants** 28-30, 30, 32, 34, 36, 38, 40, 42. **1650N \$45** ☐

CONVERSE® DRESSED-DOWN—JACK PURCELL® SHOE—The original Converse Jack Purcell. Classic, custom-designed for J.Crew. Cotton canvas. Import. White and half size 41-12.4. Unless doing Women, please order one and a half sizes smaller than your regular size. **1650N \$65** ☐

1650N \$225 ☐

☐ = Style can be monogrammed. Visit the monogram shop at jcrew.com or call 800.851.2189.



WHITMAN HERRINGBONE SPORTCOAT IN LUDLOW FIT Ludlow, our most modern fit, with a tailored cut and a fine silhouette. Italian wool. Full. **1650N \$225** ☐

48+ SLIM-FIT JEAN IN DARK WOOD WASH Slim below waist, slimmer through hip and thigh, with a narrower leg. Cotton. Import. **Wants** 28-30. **1650N \$39** ☐

SACKETT-STRIPED TIE English. 58, 27" at widest point. USA. **1650N \$49** ☐

ALDEN® SHELL CORDOBIAN CHINIA BOOTS Founded in Massachusetts by Charles H. Alden in 1854, the Alden Shoe Company is now its fourth generation of shoemaking, and its integrity and attention to craft have long made us loyal followers. Shell cordovan leather. USA. **1650N \$225** ☐

WHITMAN HERRINGBONE SPORTCOAT CRAFTED IN THE FINEST ITALIAN WOOL. IT EFFORTLESSLY DRESSES UP THE DRESSED-DOWN LOOK.



Kevin OBrien

www.art-dept.com

Art Department



Kevin OBrien

www.art-dept.com

Art Department



Kevin OBrien

www.art-dept.com

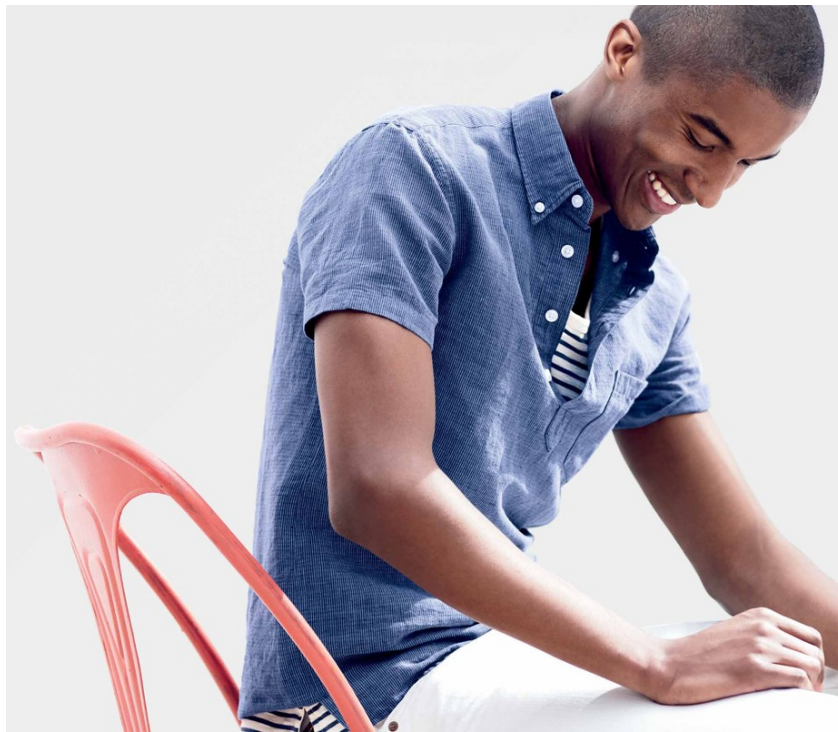
Art Department



Kevin OBrien

www.art-dept.com

Art Department



Kevin OBrien

www.art-dept.com

Art Department



Kevin OBrien

www.art-dept.com

Art Department



Kevin OBrien

www.art-dept.com

Art Department



Kevin OBrien

www.art-dept.com

Art Department



Kevin OBrien

www.art-dept.com

Art Department



Kevin OBrien

www.art-dept.com

Art Department



Kevin OBrien

www.art-dept.com