

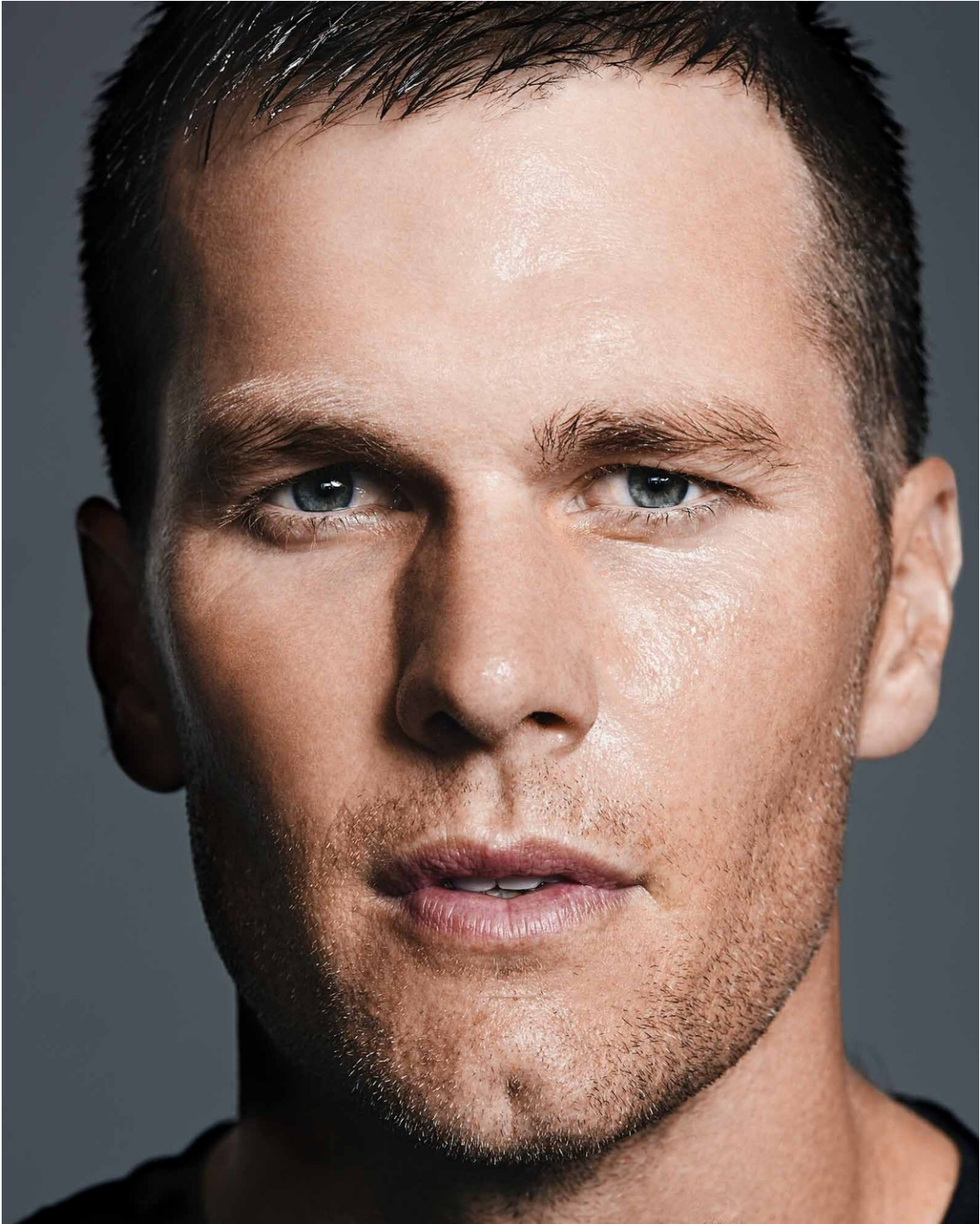
Art Department



Kevin OBrien

www.art-dept.com

Art Department



Kevin O'Brien

www.art-dept.com

Art Department



Kevin OBrien

www.art-dept.com

Art Department



Kevin OBrien

www.art-dept.com

Art Department



Kevin OBrien

www.art-dept.com

Art Department



Kevin OBrien

www.art-dept.com

Art Department



Kevin OBrien

www.art-dept.com

Art Department



Kevin OBrien

www.art-dept.com

Art Department



Kevin OBrien

www.art-dept.com

Art Department



Kevin OBrien

www.art-dept.com

Art Department



Kevin OBrien

www.art-dept.com

Art Department



Kevin OBrien

www.art-dept.com

Art Department



Kevin OBrien

www.art-dept.com

Art Department



Kevin OBrien

www.art-dept.com

Art Department



Kevin O'Brien

www.art-dept.com

Art Department



Kevin OBrien

www.art-dept.com

Art Department



Kevin OBrien

www.art-dept.com

Art Department



Kevin OBrien

www.art-dept.com

Art Department



Kevin O'Brien

www.art-dept.com

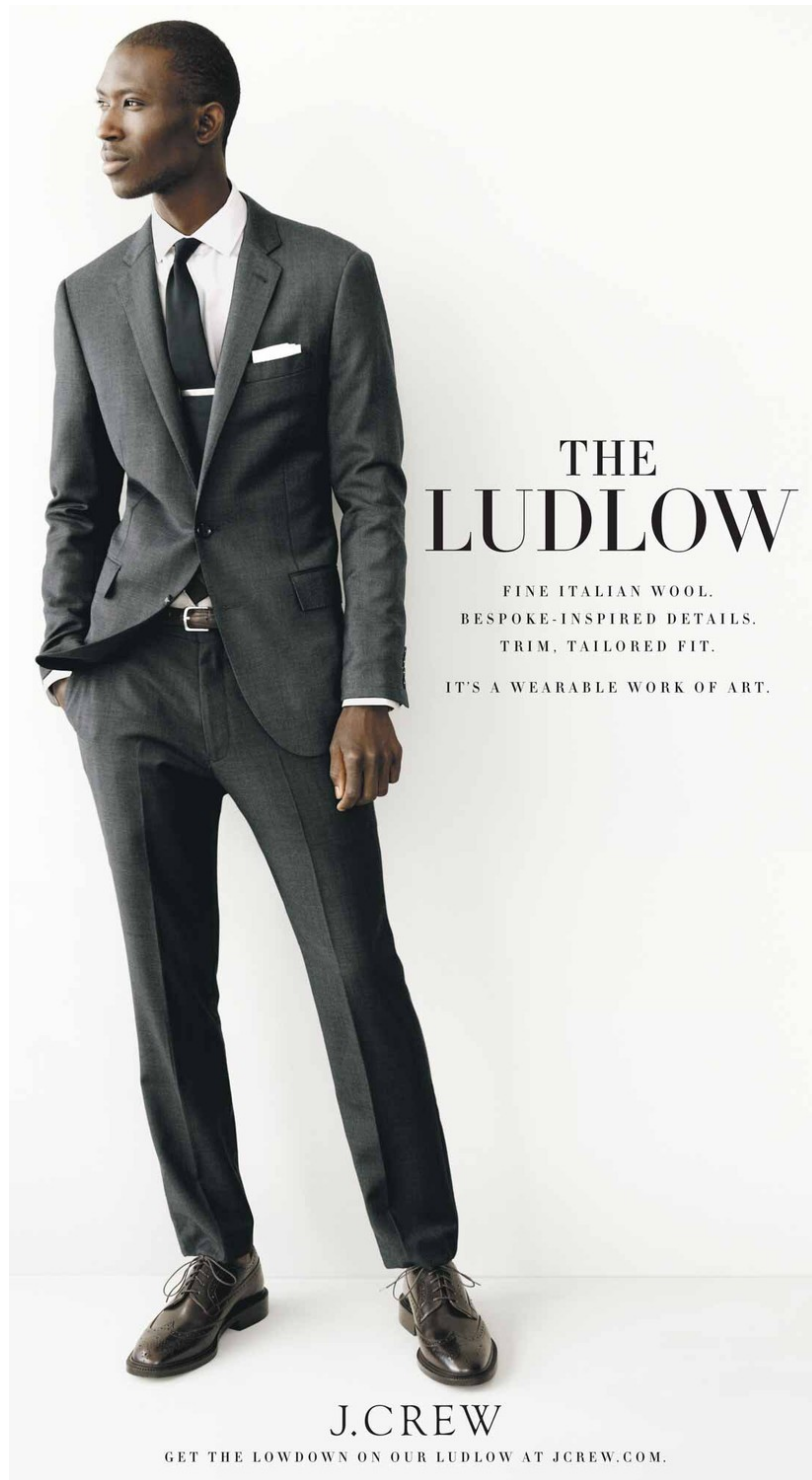
Art Department



Kevin OBrien

www.art-dept.com

Art Department



**THE
LUDLOW**

FINE ITALIAN WOOL.
BESPOKE-INSPIRED DETAILS.
TRIM, TAILORED FIT.

IT'S A WEARABLE WORK OF ART.

J.CREW

GET THE LOWDOWN ON OUR LUDLOW AT JCREW.COM.

Kevin OBrien

www.art-dept.com

Art Department



Kevin OBrien

www.art-dept.com

Art Department



Kevin OBrien

www.art-dept.com

Art Department



Kevin OBrien

www.art-dept.com

Art Department



THE ALDRIDGE

CLASSIC SILHOUETTE

TWO- OR THREE-BUTTON
JACKET WITH A 2 $\frac{3}{4}$ " LAPEL

REGULAR, STRAIGHT TROUSER
($\frac{1}{2}$ " HIGHER RISE THAN LUDLOW)

IN WORLD-CLASS
ITALIAN WOOL

MORE FABRICS
AT JCREWMENS.COM

C-G

CALL 800 562 0258 | 089

Kevin OBrien

www.art-dept.com

Art Department



Kevin OBrien

www.art-dept.com

Art Department



Kevin OBrien

www.art-dept.com

Art Department



Kevin OBrien

www.art-dept.com

Art Department



Kevin OBrien

www.art-dept.com

Art Department



Kevin OBrien

www.art-dept.com

Art Department



Kevin OBrien

www.art-dept.com

Art Department



Kevin OBrien

www.art-dept.com

Art Department



Kevin OBrien

www.art-dept.com

Art Department



Kevin OBrien

www.art-dept.com

Art Department



Kevin OBrien

www.art-dept.com

Art Department



Kevin OBrien

www.art-dept.com

Art Department



Kevin OBrien

www.art-dept.com

Art Department



Kevin OBrien

www.art-dept.com

Art Department



Kevin OBrien

www.art-dept.com

Art Department



Kevin OBrien

www.art-dept.com

Art Department



Kevin O'Brien

www.art-dept.com

Art Department



Kevin OBrien

www.art-dept.com

Art Department



Kevin OBrien

www.art-dept.com

Art Department



Kevin OBrien

www.art-dept.com

Art Department



Kevin OBrien

www.art-dept.com

Art Department



Kevin OBrien

www.art-dept.com

Art Department



Kevin O'Brien

www.art-dept.com

Art Department



Kevin OBrien

www.art-dept.com

Art Department



Kevin O'Brien

www.art-dept.com

Art Department



Kevin OBrien

www.art-dept.com

Art Department



Kevin O'Brien

www.art-dept.com

Art Department



Kevin OBrien

www.art-dept.com

Art Department



Kevin OBrien

www.art-dept.com

Art Department



Kevin OBrien

www.art-dept.com

Art Department



Kevin OBrien

www.art-dept.com

Art Department



Kevin OBrien

www.art-dept.com

Art Department



Kevin O'Brien

www.art-dept.com

Art Department



Kevin OBrien

www.art-dept.com

Art Department



Kevin O'Brien

www.art-dept.com

Art Department



Kevin OBrien

www.art-dept.com

Art Department



SEAN KAVANAGH-
DOWSETT
Restaurateur



CHARLES RENFRO
Architect



MICHAEL CHERNOW
Restaurateur



KEVIN SANDERS
Journalist/Activist



TED KATO
Business Analyst



JENKE-AHMED
TALLY
Creative Director

Kevin OBrien

www.art-dept.com

Art Department



THE FJÄLLRÄVEN GREENLAND JACKET, CRAFTED IN EXCLUSIVE G-1000® FABRIC, A SPECIAL COTTON THAT BECOMES MORE WIND- AND WATER-RESISTANT THE WORSE THE WEATHER GETS. (HOW COOL IS THAT?)

FJÄLLRÄVEN® JACKETS
Collector's Item Swedish for "arctic fox," this iconic mountaineering brand was founded over 60 years ago and is known the world over for simple, functional designs that stand the test of time. Poly/cotton. Import. XS-XL.

A greenland Fully lined. Green. 36508L \$299.

oban 36505L \$299.

DARK OLIVE

B LEVI'S® TRUCKER JACKET
Based on a 1967 style from the Levi's® archive (denim devotees take note: it was the 557® jacket). Cotton. Import. Dark worn jacket. XS-XL. 27478L \$128.

BROKEN-IN CHINOS Washed two-ply cotton twill. Import. Waists 29-36, 38, 40. More colors, color exceptions and inseams, see jcrew.com.

C urban slim fit Sits below waist, slimmer through hip and thigh, with a narrower leg. Waists 28-36. 19488L \$65. ⁽¹⁾

bootcut fit Sits on hips, straight through hip and thigh, with a bootcut leg. Catalog/jcrew.com only. 77737L \$59.50 ⁽¹⁾

relaxed fit Sits on hips, relaxed through hip and thigh, with a slightly wider leg. Catalog/jcrew.com only. 64522L \$59.50 ⁽¹⁾

regular fit Sits on hips, straight through hip and thigh, with a straight leg. 65891L \$59.50 ⁽¹⁾

classic fit Sits on hips, slim through hip and thigh, with a narrow leg. Waists 28-36, 38. 83687L \$59.50 ⁽¹⁾

D ALDEN® FOR J.CREW 405 INDY BOOTS A cult classic for decades, the iconic 405 "Indy" boot (made famous by Indiana Jones) is customized exclusively for us with a stained welt. Horween's Chromexcel leather. USA. Dark brown. Whole and half sizes 8½-12M. These shoes were shaped over a Trubalance last and run one half size larger than regular U.S. sizes. 18428L \$450.

E RED WING® WABASHA CHUKKA BOOTS These hand-sewn moccasin-style boots are crafted in the U.S. from the finest S. B. Foot distressed leather and waxed canvas (it wears to a beautiful patina with age). USA. Olive brown. Whole and half sizes 7½-12M. Catalog/jcrew.com only. 30502L \$240.

Shown with UNISEX SAINT JAMES® MERIDIEN II NAUTICAL TEE page 82. TIMEX® VINTAGE FIELD ARMY WATCH page 97.

A-D

080

Kevin OBrien

www.art-dept.com

Art Department



THE LUDLOW BLAZER

LUDLOW BLAZERS Four-season world-class wool fabric by Loro Piana. Ludlow, our most modern fit, with a tailored cut and a trim silhouette. Import. Navy. two button with double-vented back (on him) Fully lined. SHORT 36, 38, 40; REGULAR 36, 38-42, 44, 46; LONG 40, 42, 44. [Catalog/jcrew.com only. 42324N \\$365.](#) **two button** Partially lined. SHORT 36, 38, 40; REGULAR 36, 38-42, 44, 46; LONG 40, 42, 44. **21509N \$365.** **three button** Partially lined. REGULAR 36, 38-42, 44, 46; LONG 40, 42, 44. **17888N \$365.** **cashmere** Cashmere. Full Bemberg lining. SHORT 36, 38, 40; REGULAR 36, 38, 40, 42, 44; LONG 42, 44. **21403N \$595.**

MIDNIGHT

STANTON PANTS Cotton. Import. Color exceptions and inseams, see [jcrew.com](#).

DUSTY HAZEL	OLIVE DRAB
CHESTER BROWN	SEABOARD BLUE
FADED BLACK	DEEP HARBOR

classic fit (on him) Sits on hips, slim through hip and thigh, with a narrow leg. Waists 28-36, 38. **23895N \$69.50**

urban slim fit Sits below waist, slimmer through hip and thigh, with a narrower leg. Waists 28-34, 36. [Catalog/jcrew.com only. 19080N \\$75.](#)

cargo in urban slim fit Sits below waist, slimmer through hip and thigh, with a narrower leg. Waists 30-34, 36, 38, 40. [Catalog/jcrew.com only. 32767N \\$79.50](#)

484 slim fit Sits below waist, slimmer through hip and thigh, with a narrower leg. Cotton chino. Waists 28-36. **48447N \$75.**

LEATHER ROLLER-BUCKLE BELT Leather. Import. Even sizes 30-40. **30871N \$39.50**

DARK WOOD	BLACK
-----------	-------

OILED LEATHER MACALISTER BOOTS Italian oiled leather. Made in Italy. Whole and half sizes 4-12M, 13M. Unisex sizing: Women, please order two sizes smaller than your regular size.

chester brown (on him) [Catalog/jcrew.com only. 36727N \\$148.](#)

dark brown **20525N \$148.**

DARK BROWN

JACK KNOWS BEST: THINGS IN WHEN IT COMES TO LAPELS—FIND OUT JUST EXACTLY HOW WIDE (OR NARROW) OUR IN-HOUSE STYLIST SUGGESTS YOU SHOULD GO AT [JCREWMENS.COM](#).

006 | [JCREW.COM](#)

Kevin OBrien

[www.art-dept.com](#)

Art Department



010 | JCREW.COM

THE ITALIAN
WOOL
LUDLOW
SUIT

LUDLOW SUITING Ludlow, our most modern fit, with a tailored cut and a trim silhouette. Import.

ITALIAN WOOL Four-season world-class wool fabric by Loro Piana.

NAVY HEATHER CHARCOAL

BLACK

JACKETS Fully lined. **SHORT** 36, 38, 40, 42; **REGULAR** 36, 38-42, 44, 46; **LONG** 40, 42, 44, 46.

two button with center vent
Catalog/jcrew.com only.
21351N \$425. (M)

two button with double-vented back 28130N \$425. (M)

three button with center vent Not available in 39R, 41R.
16563N \$425. (M)

pant (on him) Slim, more tailored fit. Straight through hip and thigh, with a narrow leg. Partially lined. Waists 28-36, 38, 40, 42. Inseams, see jcrew.com. 16561N \$225.

slim pant Extra-slim fit. Sits below waist, slimmer through hip and thigh, with a narrower leg. Partially lined. Waists 28-36, 38, 40, 42. Inseams, see jcrew.com. Catalog/jcrew.com only. 43966N \$225.

vest Fully lined. XS-XL. Catalog/jcrew.com only. 16560N \$135.

WOOL HERRINGBONE Premier Italian wool from Lanificio Di Tollegno (est. 1862), one of the oldest mills in Italy.

HEATHER CHARCOAL HERRINGBONE NAVY

two-button jacket with double-vented back Full Bemberg lining. **SHORT** 36, 38, 40; **REGULAR** 36, 38, 40, 42, 44, 46; **LONG** 40, 42, 44, 46. 18613N \$395. (M)

pant Slim, more tailored fit. Straight through hip and thigh, with a narrow leg. Partially lined. Waists 29-36, 38, 40, 42. Inseams, see jcrew.com. 26305N \$195.

ADIDAS® SUEDE CAMPUS 80 SNEAKERS More than 30 years after its introduction, Adidas's Campus 80 sneaker remains a cult favorite and a staple of modern street wear. Suede. Import. Aluminum two. Whole and half sizes 7½-12M, (SM, 32531N \$80.

Shown with **CRAVEN-STRIPE TIE** 51173N jcrew.com, **WHITE LINEN POCKET SQUARE** 73871N jcrew.com, **TIMEX® VINTAGE FIELD ARMY WATCH** page 21.

(M) = Style can be monogrammed. Visit the monogram shop at jcrew.com or call 800 851 3189.

Kevin OBrien

www.art-dept.com

Art Department



THE
ITALIAN WOOL
ALDRIDGE
SUIT

ALDRIDGE SUITING Our classic cut, destined to be a wardrobe essential. Import.

ITALIAN WOOL (on him) Four-season world-class wool fabric by Loro Piana.

HEATHER CHARCOAL NAVY
BLACK

JACKETS WITH CENTER VENT Fully lined. SHORT 38, 40; REGULAR 36, 38, 40, 42, 44, 46; LONG 40, 42, 44, 46.

two button Catalog/jcrew.com only. 16564N \$425. (1)

three button Available in select stores. 16565N \$425. (1)

pant Straight through hip and thigh, with a straight leg. Partially lined. Waists 28-36, 38, 40, 42. Inseams, see jcrew.com. 16562N \$225.

ITALIAN CHINO Smooth cotton twill from Italy's storied Crespi mill (est. 1797). Catalog/jcrew.com only.

STONE WHEAT
NAVY

JACKETS WITH CENTER VENT Fully lined. SHORT 38, 40; REGULAR 36, 38, 40, 42, 44, 46; LONG 40, 42, 44, 46.

two button 14959N \$248. (1)

three button Not available in stone. 14990N \$248. (1)

pant Straight through hip and thigh, with a straight leg. Waists 28-36, 38, 40, 42. Inseams, see jcrew.com. 89387N \$118.

SPREAD-COLLAR REGULAR-FIT DRESS SHIRT IN WHITE 120s two-ply cotton. Import. Sizes, see jcrew.com. Catalog/jcrew.com only. 35843N \$75. (1)

DRAKES® SMALL PAISLEY HANDKERCHIEF Straight from England, Drakes London is famous for its heritage designs and modern flair. Hand-finished Italian wool and silk. Made in Italy. Navy. 16 1/2" L x 16 1/2" W. 51714N \$78.

CLASSIC LEATHER PLAQUE BELT Leather. Import. S-XL. 30878N \$49.50

CLASSIC BROWN BLACK

GIFFORD LEATHER SHOES Italian leather with a stitched-leather sole (the hallmark of a well-made pair of shoes). Made in Italy. Whole and half sizes 7 1/2-12M, 13M. wing tips (on him) 20604N \$225.

DARK CHESTNUT BLACK

oxfords 21025N \$215.

DARK CHESTNUT BLACK

Kevin OBrien

www.art-dept.com

Art Department



OUR ESSENTIAL CHINOS +
THE REPP PIQUÉ POLO =
A TOTAL NO-BRAINER.

020 | JCREW.COM

REPP PIQUÉ POLOS
A classic in clean-cut cotton piqué. Import. Color exceptions, see jcrew.com. Catalog/jcrew.com only.

WHITE	SOFFO BLUE
FRESH SAGE	TELLURIDE GREEN
HARBOR BRICK	SURF BLUE
DARK WOOD	WELSH PURPLE
CHALKBOARD	BALTIC SEA
BLACK	DARK NAVY

short sleeve (on him) S-XXL.
82319N \$39.50 or 2 for \$60.
TALL M-XL. 82460N \$43.50
or 2 for \$65. (1)

short sleeve in tailored fit
XS-XL. 82461N \$39.50
or 2 for \$60. (1)

long sleeve S-XXL.
82482N \$45 or 2 for \$70.
TALL M-XL. 87545N \$49
or 2 for \$75. (1)

ESSENTIAL CHINOS They're practically custom: You pick the hem, cuff and inseam, down to the half inch. Cotton twill. Import. Inseams, see jcrew.com. Catalog/jcrew.com only.

KHAKI	BRITISH KHAKI
DILL	HONEY BROWN
GRAPHITE	BLACK

urban slim fit (on him) Sits below waist, slimmer through hip and thigh, with a narrower leg. Waists 28-36. 24976N \$69.50 (1)

regular fit Sits on hips, straight through hip and thigh, with a straight-leg. Waists 28-36, 38, 40, 42. 60284N \$65. (1)

relaxed fit Sits on hips, relaxed through hip and thigh, with a slightly wider leg. Waists 28-36, 38, 40, 42. 60285N \$65. (1)

classic fit Sits on hips, slim through hip and thigh, with a narrow leg. Waists 28-36, 38, 42. 64782N \$65. (1)

giant fit Sits on hips, relaxed through hip and thigh, roomier fit, with a fuller leg. Not available in british khaki, dill. Waists 30-36, 38, 40, 42, 44. 64795N \$65. (1)

CONVERSE® DISTRESSED JACK PURCELL® SNEAKERS
The original Converse Jack Purcell classics, custom-distressed for J.Crew. Cotton canvas. Import. Whole and half sizes 4½-12M. Unisex sizing: Women, please order one-and-a-half sizes smaller than your regular size. 85554N \$65.

WHITE	NAVY
BLACK	

(1) = Style can be monogrammed. Visit the monogram shop at jcrew.com or call 800 851 3189.

Kevin OBrien

www.art-dept.com

Art Department

WHITMAN HERRINGBONE SPORTCOAT IN LUDLOW FIT
Ludlow, our most modern fit, with a tailored cut and a trim silhouette. Italian wool. Full Bemberg lining. Import. **SHORT** 36, 38, 40; **REGULAR** 36, 38, 40, 42, 44, 46; **LONG** 40, 42, 44. **17569N \$298.**



484 SLIM-FIT JEAN IN DARK WORN WASH Sits below waist, slimmer through hip and thigh, with a narrower leg. Cotton. Import. Waists 28-36. Inseams, see jcrew.com. **Catalog/jcrew.com only. 38555N \$98.**

SACKETT-STRIPE TIE English silk. 2 1/2" at widest point. USA. Warm scarlet. One size. **40862N \$49.50**

ALDEN® SHELL CORDOVAN CHUKKA BOOTS Founded in Massachusetts by Charles H. Alden in 1884, the Alden Shoe Company is now in its fourth generation of shoemaking, and its integrity and attention to craft have long made us loyal followers. Shell cordovan leather. USA. Dark burgundy. Whole and half sizes 7 1/2-12M, 13M. These shoes run one half size larger than regular U.S. sizes. **28357N \$625.**

Shown with (both pages) **VINTAGE CHAMBRAY UTILITY SHIRT** page 7, (right) **TIMEX® VINTAGE FIELD ARMY WATCH** page 21.



**THE WHITMAN
HERRINGBONE
SPORTCOAT**
CRAFTED IN THE FINEST ITALIAN
WOOL, IT EFFORTLESSLY DRESSES
UP THE DRESSED-DOWN LOOK.

Kevin OBrien

www.art-dept.com

Art Department



Kevin O'Brien

www.art-dept.com

Art Department



Kevin OBrien

www.art-dept.com

Art Department



Kevin O'Brien

www.art-dept.com

Art Department



Kevin OBrien

www.art-dept.com

Art Department



Kevin O'Brien

www.art-dept.com

Art Department



Kevin OBrien

www.art-dept.com

Art Department



Kevin OBrien

www.art-dept.com

Art Department



Kevin OBrien

www.art-dept.com

Art Department



Kevin OBrien

www.art-dept.com

Art Department



Kevin OBrien

www.art-dept.com

Art Department



Kevin OBrien

www.art-dept.com

Art Department



Kevin OBrien

www.art-dept.com

Art Department



Kevin OBrien

www.art-dept.com

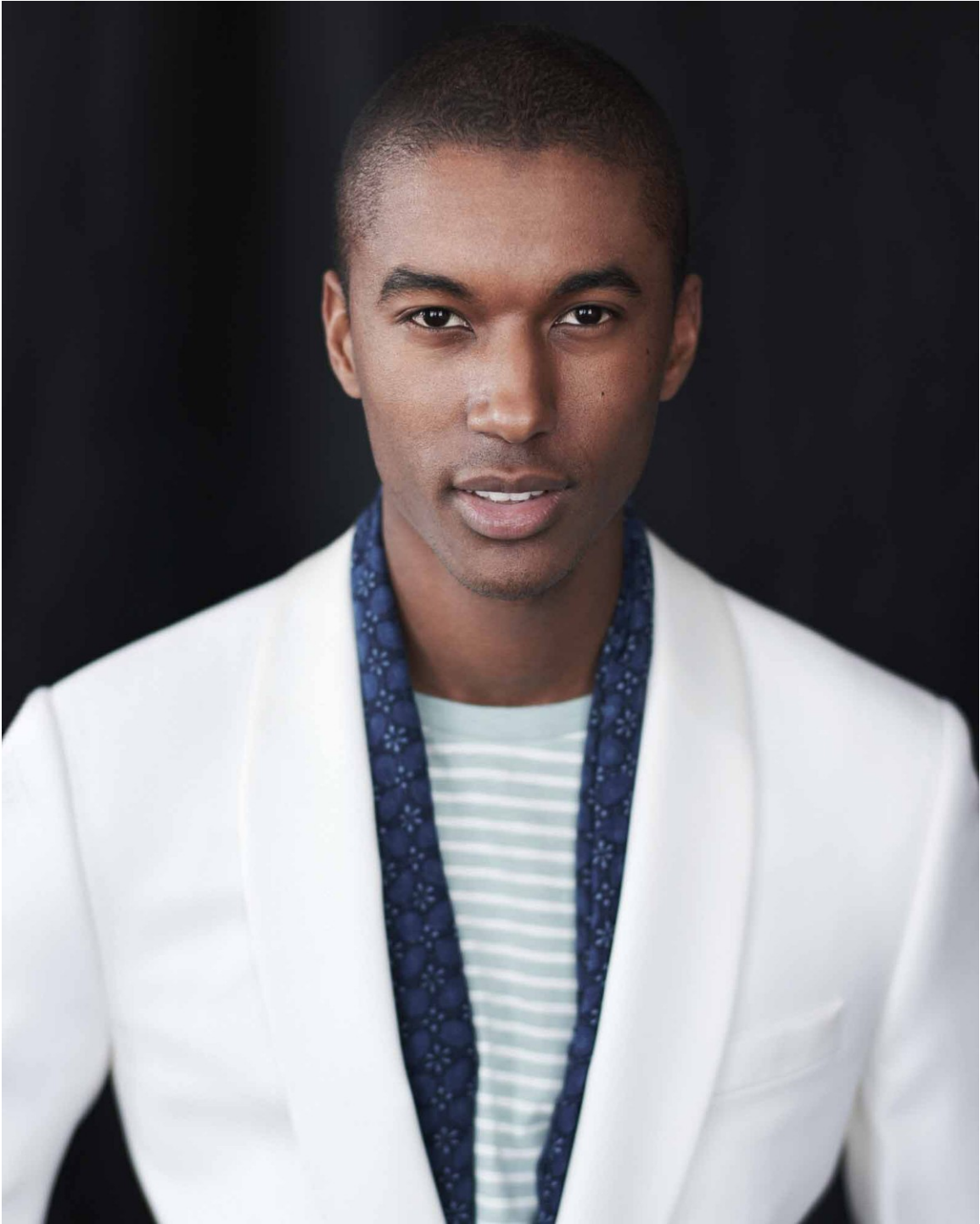
Art Department



Kevin OBrien

www.art-dept.com

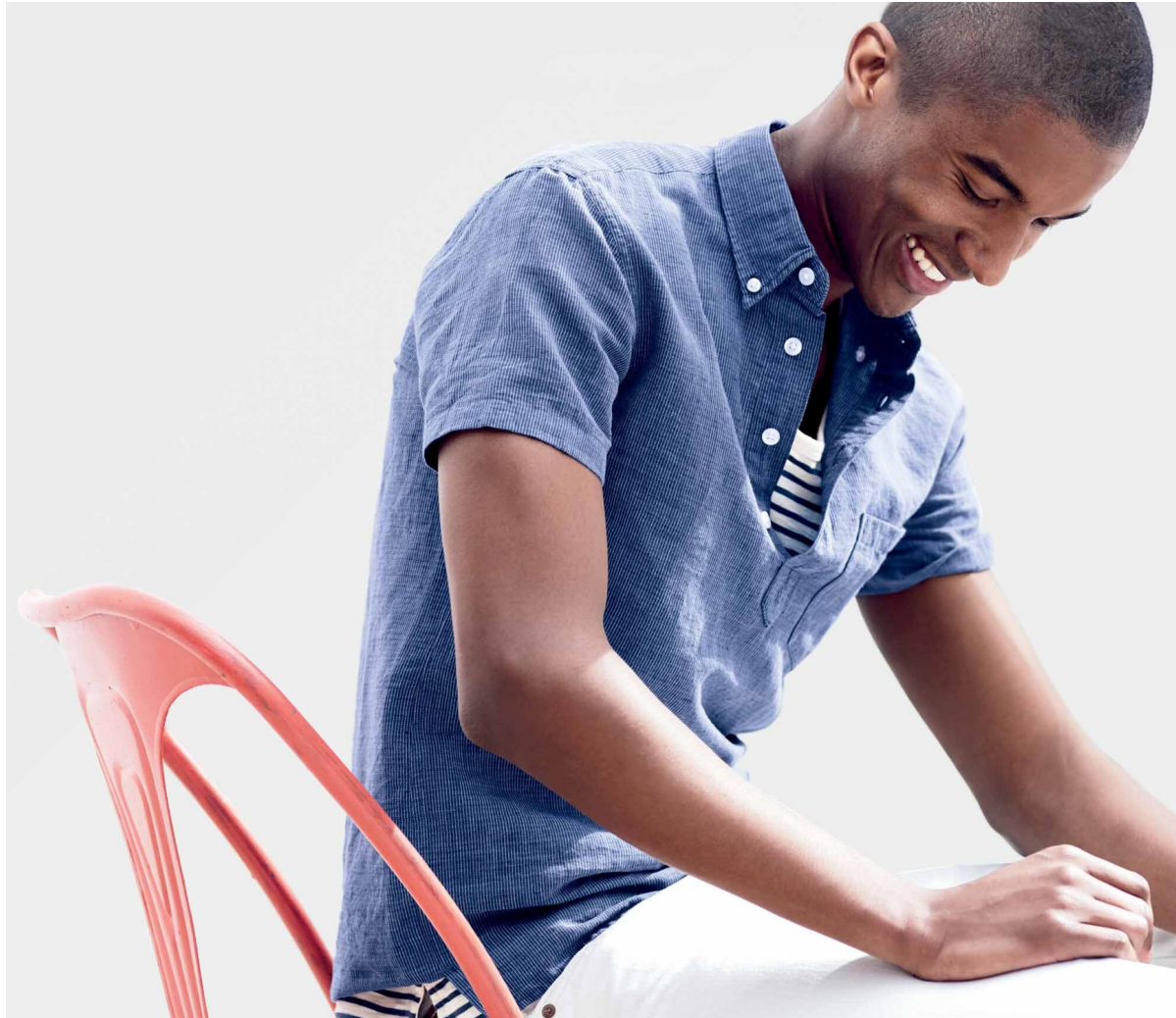
Art Department



Kevin O'Brien

www.art-dept.com

Art Department



Kevin OBrien

www.art-dept.com

Art Department



Kevin OBrien

www.art-dept.com

Art Department



Kevin OBrien

www.art-dept.com

Art Department



Kevin O'Brien

www.art-dept.com

Art Department



Kevin OBrien

www.art-dept.com

Art Department



Kevin OBrien

www.art-dept.com

Art Department



Kevin OBrien

www.art-dept.com

Art Department



Kevin O'Brien

www.art-dept.com

Art Department



Kevin OBrien

www.art-dept.com

Art Department



Kevin OBrien

www.art-dept.com

Art Department



Kevin OBrien

www.art-dept.com

Art Department



Kevin OBrien

www.art-dept.com

Art Department



Kevin OBrien

www.art-dept.com

Art Department



Kevin OBrien

www.art-dept.com

Art Department



Kevin OBrien

www.art-dept.com

Art Department



Kevin OBrien

www.art-dept.com

Art Department



Kevin OBrien

www.art-dept.com

Art Department



Kevin OBrien

www.art-dept.com

Art Department



Kevin OBrien

www.art-dept.com