

# Art Department



Martyn Thompson

[www.art-dept.com](http://www.art-dept.com)

# Art Department



Martyn Thompson

[www.art-dept.com](http://www.art-dept.com)



# Art Department



Martyn Thompson

[www.art-dept.com](http://www.art-dept.com)

# Art Department



Martyn Thompson

[www.art-dept.com](http://www.art-dept.com)

# Art Department



Martyn Thompson

[www.art-dept.com](http://www.art-dept.com)



# Art Department



Martyn Thompson

[www.art-dept.com](http://www.art-dept.com)



# Art Department



Martyn Thompson

[www.art-dept.com](http://www.art-dept.com)

# Art Department



Martyn Thompson

[www.art-dept.com](http://www.art-dept.com)



# Art Department



Martyn Thompson

[www.art-dept.com](http://www.art-dept.com)

# Art Department



Martyn Thompson

[www.art-dept.com](http://www.art-dept.com)



# Art Department



Martyn Thompson

[www.art-dept.com](http://www.art-dept.com)



# Art Department



Martyn Thompson

[www.art-dept.com](http://www.art-dept.com)

# Art Department



Martyn Thompson

[www.art-dept.com](http://www.art-dept.com)



# Art Department



Martyn Thompson

[www.art-dept.com](http://www.art-dept.com)



# Art Department



Martyn Thompson

[www.art-dept.com](http://www.art-dept.com)

# Art Department



Martyn Thompson

[www.art-dept.com](http://www.art-dept.com)



# Art Department



Martyn Thompson

[www.art-dept.com](http://www.art-dept.com)



# Art Department



Martyn Thompson

[www.art-dept.com](http://www.art-dept.com)

# Art Department



Martyn Thompson

[www.art-dept.com](http://www.art-dept.com)



# Art Department



Martyn Thompson

[www.art-dept.com](http://www.art-dept.com)

# Art Department



Martyn Thompson

[www.art-dept.com](http://www.art-dept.com)



# Art Department



Martyn Thompson

[www.art-dept.com](http://www.art-dept.com)

# Art Department



Martyn Thompson

[www.art-dept.com](http://www.art-dept.com)



# Art Department



Martyn Thompson

[www.art-dept.com](http://www.art-dept.com)

# Art Department



Martyn Thompson

[www.art-dept.com](http://www.art-dept.com)



# Art Department



Martyn Thompson

[www.art-dept.com](http://www.art-dept.com)

# Art Department



Martyn Thompson

[www.art-dept.com](http://www.art-dept.com)



# Art Department



Martyn Thompson

[www.art-dept.com](http://www.art-dept.com)

# Art Department



Martyn Thompson

[www.art-dept.com](http://www.art-dept.com)



# Art Department



Martyn Thompson

[www.art-dept.com](http://www.art-dept.com)

# Art Department



Martyn Thompson

[www.art-dept.com](http://www.art-dept.com)



# Art Department



Martyn Thompson

[www.art-dept.com](http://www.art-dept.com)



# Art Department



Martyn Thompson

[www.art-dept.com](http://www.art-dept.com)



# Art Department



**Inspired by chefs.  
Created for you.**

Michelin Three Star Chef Christopher Kostow  
for Samsung Chef Collection appliances.

© 2018 Samsung Electronics America, Inc.

## Martyn Thompson

[www.art-dept.com](http://www.art-dept.com)

# Art Department



**Inspired by chefs.  
Created for you.**

Michelin Three Star Chef Christopher Kostow  
for Samsung Chef Collection appliances.

Martyn Thompson

[www.art-dept.com](http://www.art-dept.com)



# Art Department

Redesign your point of view and the  
world will be at your feet.

MAKE  
YOUR  
MARK



Interface **FLOR**

To learn more call 1 800 336 0225 ext 6511 or visit us online at [www.interfaceflor.com](http://www.interfaceflor.com). Mission Zero and the Mission Zero mark are registered trademarks of Interface, Inc.



COLLECTION: Red Carpet™ PRODUCT: Redesign™ COLOR: 102372 Navy



Mission Zero  
our promise to eliminate  
any negative impact our company  
may have on the environment  
by the year 2020.

## Martyn Thompson

[www.art-dept.com](http://www.art-dept.com)

# Art Department



Martyn Thompson

[www.art-dept.com](http://www.art-dept.com)



# Art Department



Martyn Thompson

[www.art-dept.com](http://www.art-dept.com)



# Art Department



Martyn Thompson

[www.art-dept.com](http://www.art-dept.com)



# Art Department

Give any floor the red carpet treatment  
and reclaim your spatial identity.

MAKE  
YOUR  
MARK



InterfaceFLOR®

To learn more call 1 800 336 0225 ext 6511 or visit us online at [www.interfaceflor.com](http://www.interfaceflor.com). Mission Zero and the Mission Zero mark are registered trademarks of Interface, Inc.



COLLECTION: Red Carpet™ PRODUCT: Redcign™ COLOR: 102374 Red



Mission Zero:  
our promise to eliminate  
any negative impact our company  
may have on the environment  
by the year 2020.

## Martyn Thompson

[www.art-dept.com](http://www.art-dept.com)

# Art Department



Martyn Thompson

[www.art-dept.com](http://www.art-dept.com)



# Art Department



Martyn Thompson

[www.art-dept.com](http://www.art-dept.com)



# Art Department



Martyn Thompson

[www.art-dept.com](http://www.art-dept.com)



# Art Department



Martyn Thompson

[www.art-dept.com](http://www.art-dept.com)

# Art Department



Martyn Thompson

[www.art-dept.com](http://www.art-dept.com)



# Art Department

*Harness the raw power of design  
and take it to the next level.*

MAKE  
YOUR  
MARK



Interface **FLOR**®

To learn more call 1 800 336 0225 ext 6511 or visit us online at [www.interfaceflor.com](http://www.interfaceflor.com). Mission Zero and the Mission Zero mark are registered trademarks of Interface, Inc.



PRODUCT: Raw™ COLOR: 101058 Depot



Mission Zero:  
our promise to eliminate  
any negative impact our company  
may have on the environment  
by the year 2020.

## Martyn Thompson

[www.art-dept.com](http://www.art-dept.com)

# Art Department



Martyn Thompson

[www.art-dept.com](http://www.art-dept.com)



# Art Department



Martyn Thompson

[www.art-dept.com](http://www.art-dept.com)

# Art Department



Martyn Thompson

[www.art-dept.com](http://www.art-dept.com)



# Art Department



Martyn Thompson

[www.art-dept.com](http://www.art-dept.com)

# Art Department



Martyn Thompson

[www.art-dept.com](http://www.art-dept.com)



# Art Department



Martyn Thompson

[www.art-dept.com](http://www.art-dept.com)

# Art Department



Martyn Thompson

[www.art-dept.com](http://www.art-dept.com)



# Art Department



Martyn Thompson

[www.art-dept.com](http://www.art-dept.com)

# Art Department



Martyn Thompson

[www.art-dept.com](http://www.art-dept.com)



# Art Department



Martyn Thompson

[www.art-dept.com](http://www.art-dept.com)

# Art Department



Martyn Thompson

[www.art-dept.com](http://www.art-dept.com)



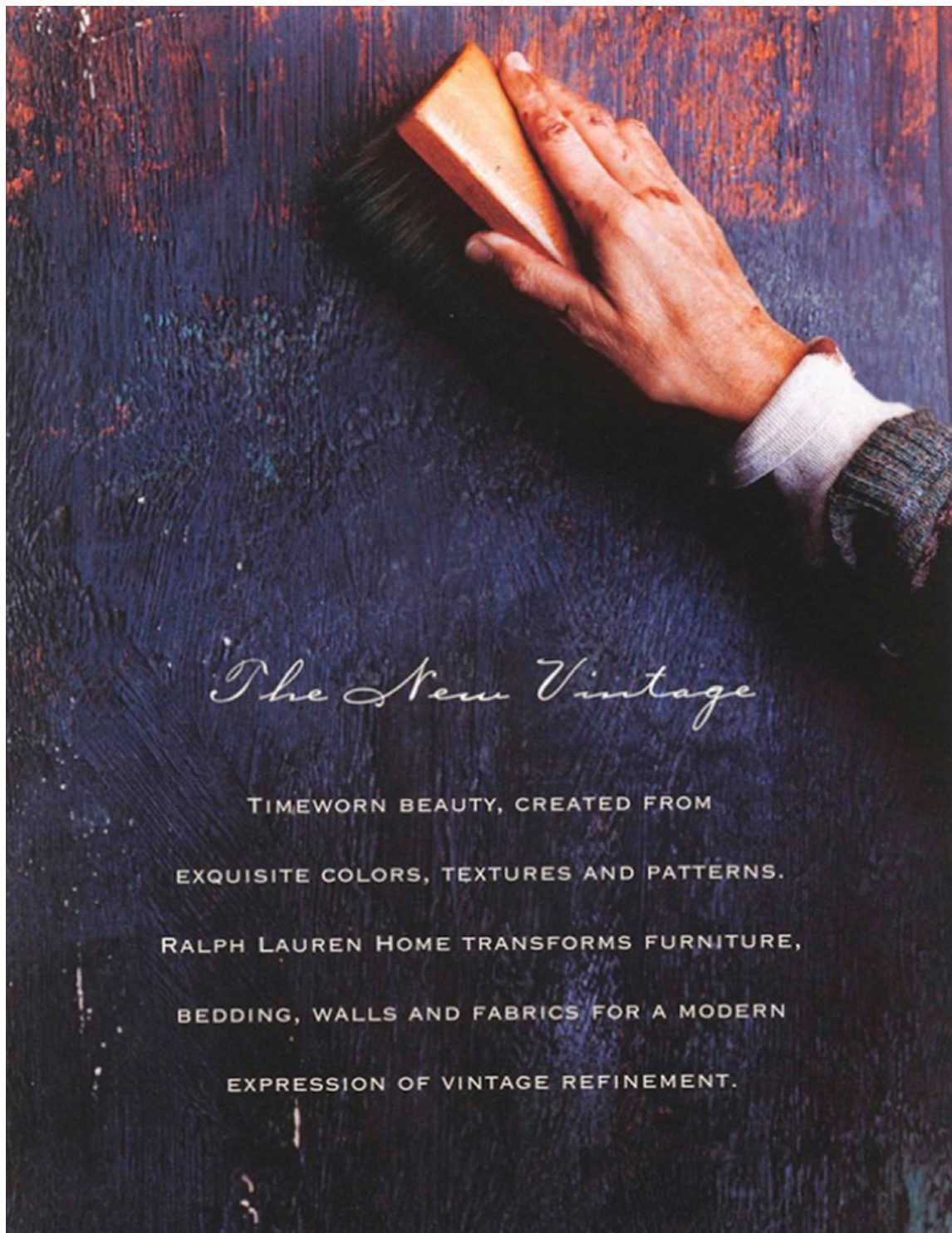
# Art Department



Martyn Thompson

[www.art-dept.com](http://www.art-dept.com)

# Art Department



## *The New Vintage*

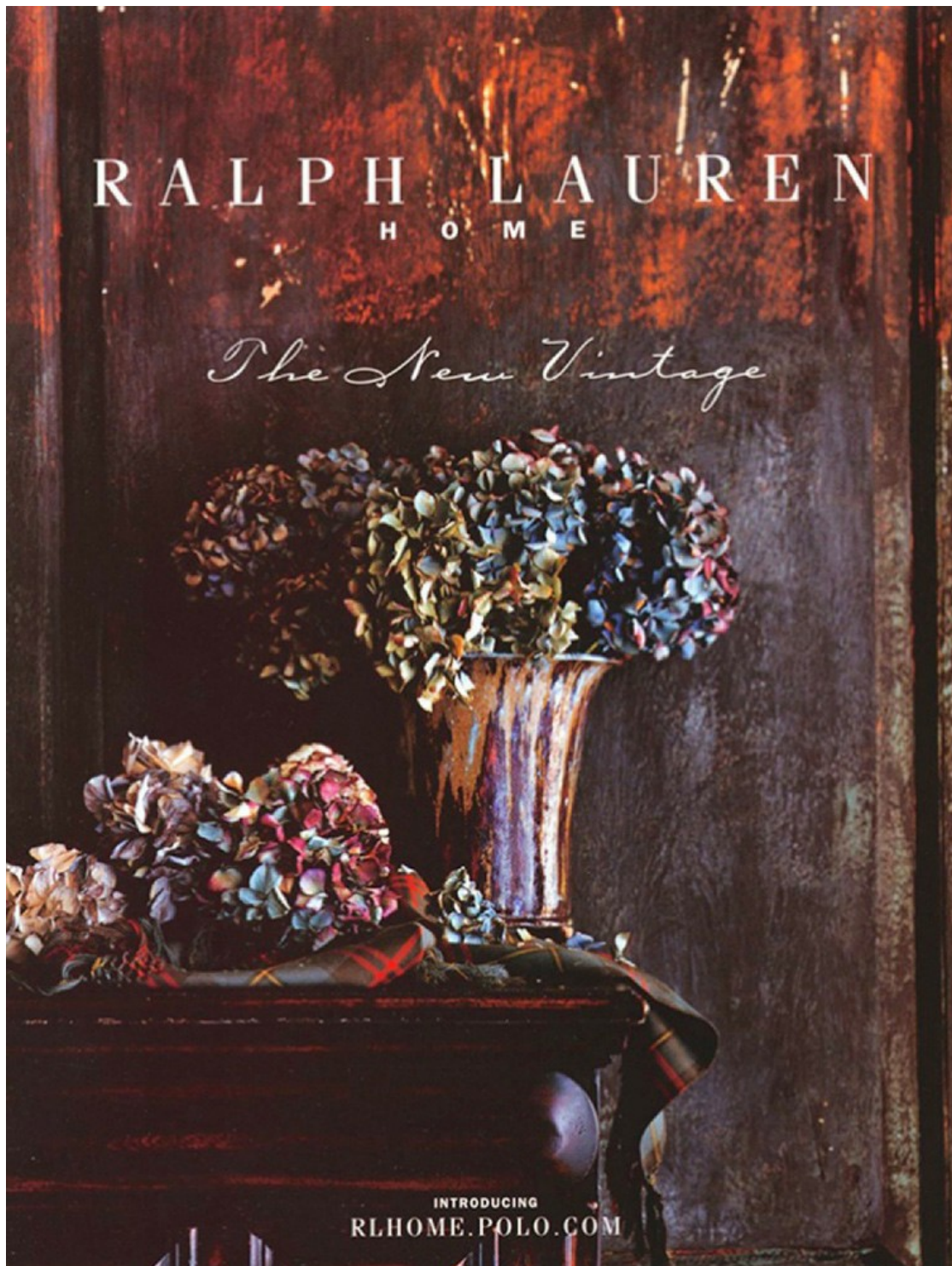
TIMEWORN BEAUTY, CREATED FROM  
EXQUISITE COLORS, TEXTURES AND PATTERNS.  
RALPH LAUREN HOME TRANSFORMS FURNITURE,  
BEDDING, WALLS AND FABRICS FOR A MODERN  
EXPRESSION OF VINTAGE REFINEMENT.

## Martyn Thompson

[www.art-dept.com](http://www.art-dept.com)



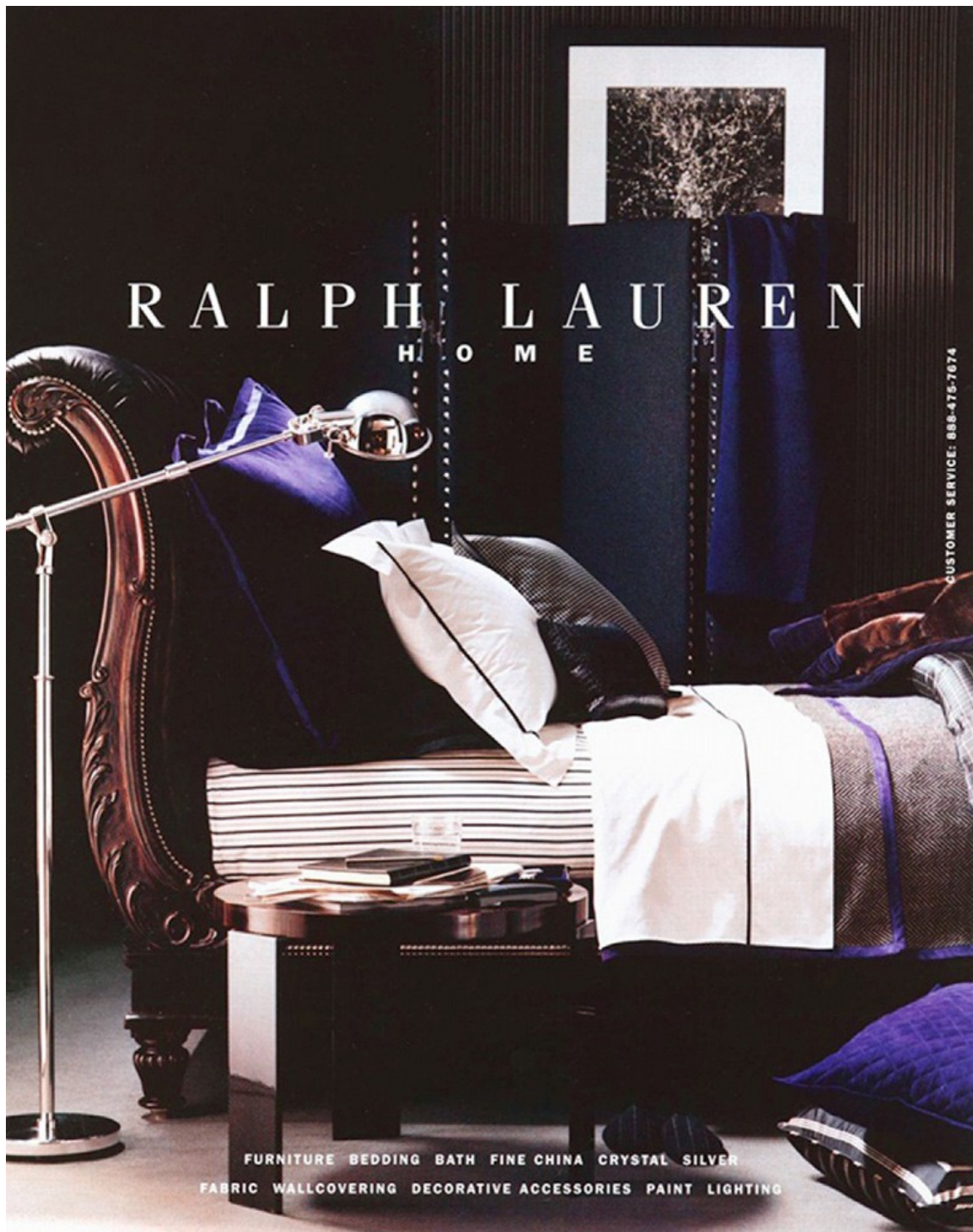
# Art Department



Martyn Thompson

[www.art-dept.com](http://www.art-dept.com)

# Art Department



Martyn Thompson

[www.art-dept.com](http://www.art-dept.com)



# Art Department

## Precious Metal



Perfect pieces in glowing rose gold set the tone for the new season.

Photographs by Martyn Thompson

---

## Martyn Thompson

[www.art-dept.com](http://www.art-dept.com)

# Art Department



Martyn Thompson

[www.art-dept.com](http://www.art-dept.com)



# Art Department



Martyn Thompson

[www.art-dept.com](http://www.art-dept.com)

# Art Department



Martyn Thompson

[www.art-dept.com](http://www.art-dept.com)



# Art Department



ROOM 188  
PRIVATE CHARTER TO PRINCES' ISLANDS  
TURKISH ROSE JAM  
CARDAMOM COFFEE  
HOT STONE MASSAGE  
SHARPENED #2 PENCILS

MORE THAN 30 EXQUISITE HOTELS WORLDWIDE. FOR RESERVATIONS PLEASE VISIT PARKHYATT.COM.  
#MYLUXLIST

PARK HYATT®

LUXURY is PERSONAL

## Martyn Thompson

[www.art-dept.com](http://www.art-dept.com)

# Art Department



SUITE 1028  
SOFT-BOILED EGGS  
8AM CAR TO THE CAPITOL  
RESERVATION AT PHILLIPS AFTER 5  
CHEF'S TABLE AT BLUE DUCK TAVERN  
SECURE PHONE LINE

MORE THAN 30 EXQUISITE HOTELS WORLDWIDE. FOR RESERVATIONS PLEASE VISIT [PARKHYATT.COM](http://PARKHYATT.COM).  
#MYLUXLIST

PARK HYATT®  
LUXURY is PERSONAL

Martyn Thompson

[www.art-dept.com](http://www.art-dept.com)



# Art Department



Hyatt and Park Hyatt names, designs and related marks are trademarks of Hyatt Corporation. All rights reserved.

SUITE 2203  
40-YEAR, SINGLE MALT SCOTCH  
DARK CHOCOLATE TRUFFLES  
OVERSIZED SOAKING TUB  
BACKSTAGE ACCESS AT CARNEGIE HALL  
BLANK SHEET MUSIC

MORE THAN 30 EXQUISITE HOTELS WORLDWIDE. FOR RESERVATIONS PLEASE VISIT [PARKHYATT.COM](http://PARKHYATT.COM).  
#MYLUXLIST

PARK HYATT®

LUXURY is PERSONAL

## Martyn Thompson

[www.art-dept.com](http://www.art-dept.com)

# Art Department



SUITE 157  
JAPANESE MATCHA TEA  
PRIVATE TOUR OF MoMA  
BITTERS-MAKING MASTERS CLASS  
6AM DOG WALKER  
RUBBER CHEW TOY

MORE THAN 80 EXQUISITE HOTELS WORLDWIDE. FOR RESERVATIONS PLEASE VISIT [PARKHYATT.COM](http://PARKHYATT.COM).  
#MYLUXLIST

PARK HYATT®  
LUXURY is PERSONAL

Martyn Thompson

[www.art-dept.com](http://www.art-dept.com)



# Art Department



Martyn Thompson

[www.art-dept.com](http://www.art-dept.com)

# Art Department



Martyn Thompson

[www.art-dept.com](http://www.art-dept.com)



# Art Department



Martyn Thompson

[www.art-dept.com](http://www.art-dept.com)

# Art Department



©2011 GREY GOOSE. THE GREY GOOSE BOTTLE DESIGN AND THE GREY GOOSE TRADEMARK ARE TRADEMARKS AND/OR REGISTERED TRADEMARKS. IMPORTED BY GREY GOOSE IMPORTING COMPANY, CANNAL CARRIE, TX. VODKA 40% ALC. BY VOL. DISTILLED FROM GRAIN.

## TO LIVING IN GOOD COMPANY

GREY GOOSE® Vodka is a celebration of exceptional taste, from the finest natural ingredients to the final sip of a cocktail shared with friends. Visit [greygoose.com](http://greygoose.com) for a selection of signature recipes perfect for enjoying with those who matter most.

[GREYGOOSE.COM](http://GREYGOOSE.COM)



**GREY GOOSE**  
World's Best Tasting Vodka

*Sip Responsibly.*

# Martyn Thompson

[www.art-dept.com](http://www.art-dept.com)



# Art Department



ON DISCERNING TASTE  
LATE NIGHT DINING

THERE'S SOMETHING WONDERFUL about a late night dinner, when no reservations are needed. The intimacy. The company of insiders. The spontaneous swapping of stories and seats at the table. The impromptu pleasure of lingering over a meal long after the day players have gone to bed.

GREY GOOSE  
World's Best Tasting Vodka

GREYGOOSE.COM



Martyn Thompson

[www.art-dept.com](http://www.art-dept.com)

# Art Department



A black and white advertisement for Grey Goose Vodka. In the center, a chilled bottle of Grey Goose Vodka stands on a light-colored surface. The bottle's label features the brand's signature blue and white design, including a stylized goose and the text 'GREY GOOSE VODKA', 'DISTILLED AND BOTTLED IN FRANCE', and '40% vol'. To the left of the bottle, three small snifter glasses are partially filled with vodka. To the right, a single snifter glass is also filled. A small, round, blue object, possibly a cork or a small container, lies on the surface near the bottle. In the background, a person in a dark suit is silhouetted against a large window, holding a glass and looking out. The window shows a blurred cityscape. The overall mood is sophisticated and elegant.

©2008 - GREY GOOSE, THE GREY GOOSE BOTTLE DESIGN AND THE GOOSE DESIGN ARE TRADEMARKS AND/OR REGISTERED TRADEMARKS.

**MAÎTRE DE CHAI**  
EXCEPTIONAL TASTE. DISTINCTIVE ORIGINS. A REFINED VISION. ONLY GREY GOOSE VODKA IS DISTILLED UNDER THE MASTERFUL GUIDANCE OF A MAÎTRE DE CHAI. CELLAR MASTER FRANCOIS THIBAUT'S EXPERTISE IN SPIRIT MAKING FOLLOWS THE CENTURIES OLD TRADITIONS OF THE COGNAC REGION. DISCERNING TASTE IS IN THE DETAILS.

GREYGOOSE.COM

**GREY GOOSE**  
World's Best Tasting Vodka  
Enjoy Responsibly.

## Martyn Thompson

[www.art-dept.com](http://www.art-dept.com)



# Art Department



## LA POIRE

FILL GLASS WITH HAND-CHIPPED ICE. Serve on the rocks. GREY GOOSE® La Poire pear-flavored vodka has been carefully crafted from pears of the Anjou region of France, creating a distinct balance of freshness and natural pear essence in every pour. The result is a smooth, generous taste, best appreciated as is.

GREYGOOSE.COM



**GREY GOOSE**  
*La Poire*

*Sip Responsibly.*

## Martyn Thompson

[www.art-dept.com](http://www.art-dept.com)

# Art Department



## L'ORANGE

GARNISH GLASS WITH A RIND TWIST. Serve on the rocks. GREY GOOSE® L'Orange flavored vodka has been carefully crafted with oranges selected for their superior quality, creating a distinct balance of freshness and natural orange essence in every pour. The result is a full, authentic taste, best appreciated as is.

GREYGOOSE.COM



Sip Responsibly.

## Martyn Thompson

[www.art-dept.com](http://www.art-dept.com)



# Art Department



ON DISCERNING TASTE

## OYSTERS

**BEST ORDERED IN MONTHS** that contain the letter 'R' and always best when local, bracingly fresh and shared with the table. Sauces and garnish are a matter of personal preference but are best used sparingly. When accompanied by an icy shot, straight up, oysters are a wildly delicious way to satisfy the cocktail hour.

**GREY GOOSE**  
World's Best Tasting Vodka

GREYGOOSE.COM



## Martyn Thompson

[www.art-dept.com](http://www.art-dept.com)

# Art Department



Martyn Thompson

[www.art-dept.com](http://www.art-dept.com)



# Art Department



## GOODYEAR WELT

A welt is stitched to the upper using the Goodyear Welt machine, and a layer of ground cork is added and the leather skived before the sole is sewn to the welt. This ensures greater comfort, a more refined presentation and less wear on the upper. The sole can also be more easily replaced.



## MATERIALS

Only the finest-quality skins are selected, and each skin is carefully checked for any imperfections.



## HAND SEWING

Each shoe is meticulously sewn by hand using waxed cotton thread often attached to a boar's bristle. This allows for a smaller, more uniform hole and more precise construction detail.

# Martyn Thompson

[www.art-dept.com](http://www.art-dept.com)

# Art Department



## FINISHING TOUCH

Once a shoe is constructed, it is stained, burnished and polished by hand. Any hardware or decorative details are applied, and a pattern exclusive to Ralph Lauren is heat-stamped onto the sole.

## Martyn Thompson

[www.art-dept.com](http://www.art-dept.com)



# Art Department



Martyn Thompson

[www.art-dept.com](http://www.art-dept.com)

# Art Department



Martyn Thompson

[www.art-dept.com](http://www.art-dept.com)



# Art Department



Martyn Thompson

# Art Department



Martyn Thompson

[www.art-dept.com](http://www.art-dept.com)



# Art Department



Martyn Thompson

[www.art-dept.com](http://www.art-dept.com)

# Art Department



Martyn Thompson

[www.art-dept.com](http://www.art-dept.com)



# Art Department



Martyn Thompson

[www.art-dept.com](http://www.art-dept.com)

# Art Department



Martyn Thompson

[www.art-dept.com](http://www.art-dept.com)



# Art Department



Martyn Thompson

[www.art-dept.com](http://www.art-dept.com)

# Art Department



Martyn Thompson

[www.art-dept.com](http://www.art-dept.com)



# Art Department



Martyn Thompson

[www.art-dept.com](http://www.art-dept.com)

# Art Department



Martyn Thompson

[www.art-dept.com](http://www.art-dept.com)



# Art Department



Martyn Thompson

[www.art-dept.com](http://www.art-dept.com)

# Art Department



Martyn Thompson

[www.art-dept.com](http://www.art-dept.com)



# Art Department



Martyn Thompson

[www.art-dept.com](http://www.art-dept.com)

# Art Department



Martyn Thompson

[www.art-dept.com](http://www.art-dept.com)



# Art Department



Martyn Thompson

[www.art-dept.com](http://www.art-dept.com)

# Art Department



Martyn Thompson

[www.art-dept.com](http://www.art-dept.com)



# Art Department



Martyn Thompson

[www.art-dept.com](http://www.art-dept.com)



# Art Department

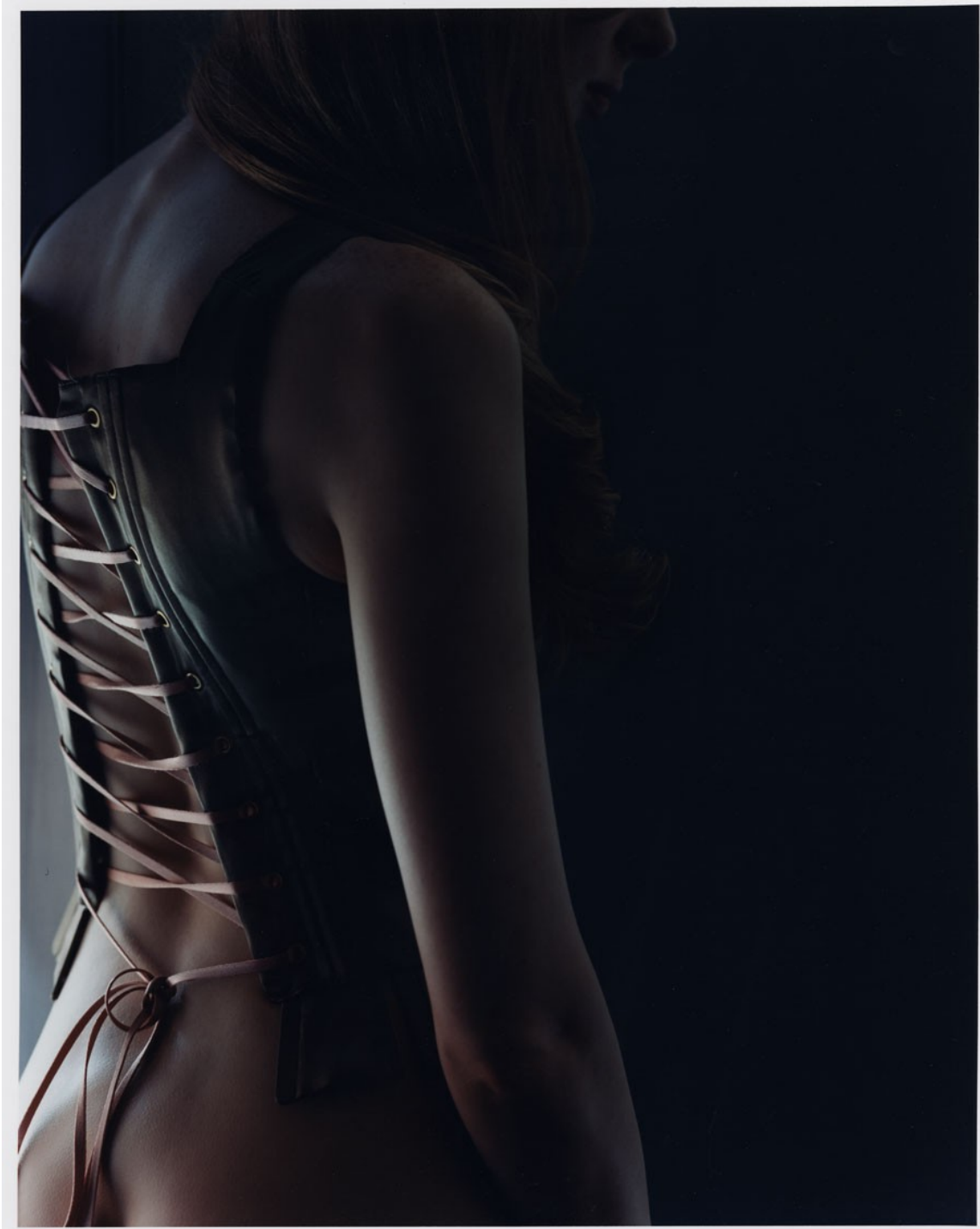


Martyn Thompson

[www.art-dept.com](http://www.art-dept.com)



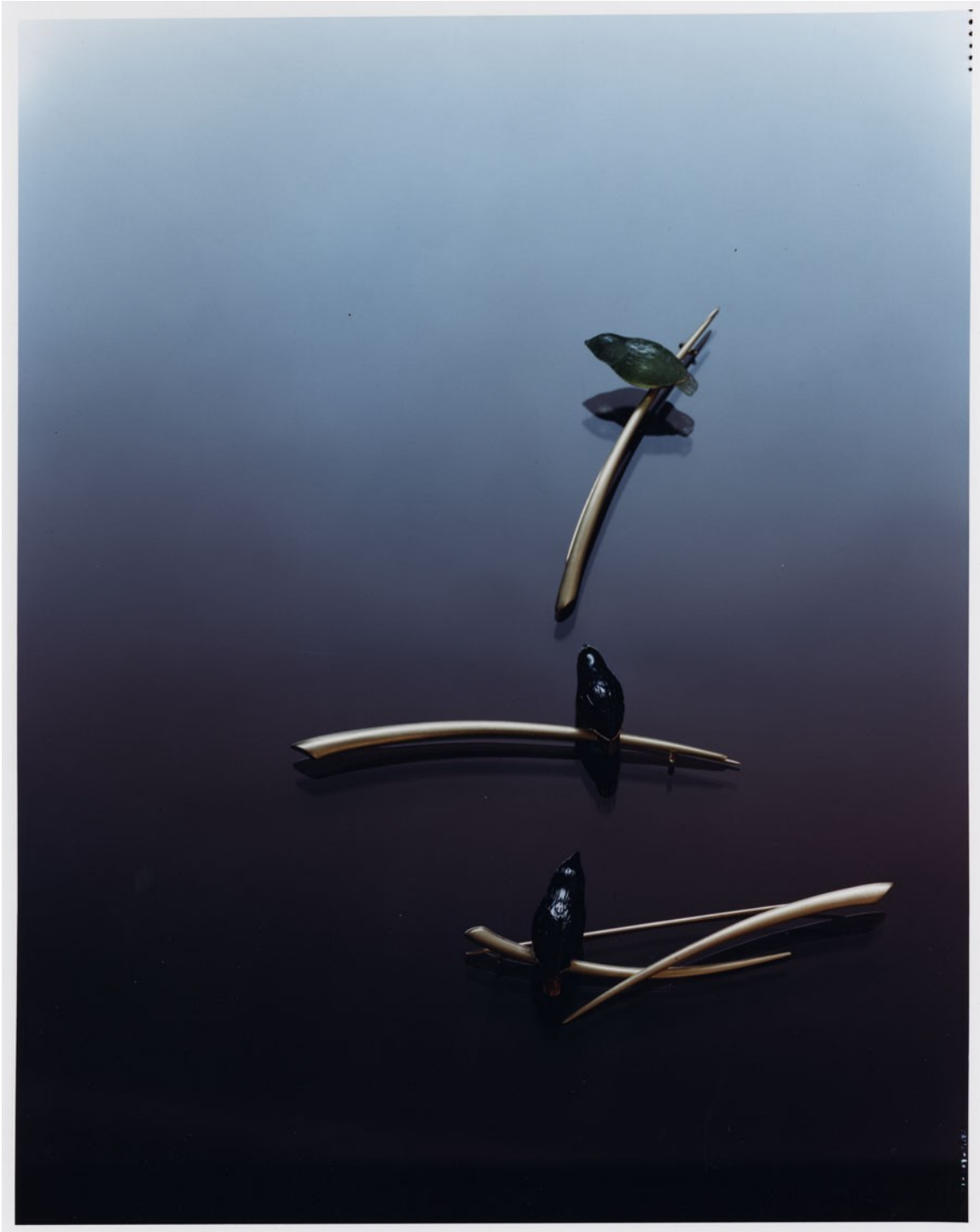
# Art Department



Martyn Thompson

[www.art-dept.com](http://www.art-dept.com)

# Art Department



Martyn Thompson

[www.art-dept.com](http://www.art-dept.com)



# Art Department



Martyn Thompson

[www.art-dept.com](http://www.art-dept.com)

# Art Department



Martyn Thompson

[www.art-dept.com](http://www.art-dept.com)



# Art Department



The advertisement features a collage of images from the Starbucks Reserve Roastery and Tasting Room. The top left shows a wooden wall with the text 'STARBUCKS RESERVE ROASTERY AND TASTING ROOM'. The top right shows a large, industrial coffee roasting machine with a Starbucks logo. The bottom left shows two workers in a roasting facility. The bottom right shows a barista serving coffee. The background is dark with a large, stylized Starbucks logo on the left.

STARBUCKS RESERVE  
ROASTERY AND TASTING ROOM

OUR MOST COVETED COFFEES, DELIVERED  
FRESH TO YOUR DOORSTEP

*Each year in our travels we discover a precious handful of coffee beans so special and rare that we can't wait to bring them home and share. We rush them to Seattle, and the Starbucks Reserve® Roastery and Tasting Room—a one-of-a-kind coffee wonderland we created exclusively for roasting and serving the most extraordinary beans we can find. We call these small-lot coffees Starbucks Reserve.*

*Some of these coffees are so rare that we offer them only at our Roastery—until now. With a Starbucks Reserve® Roastery Subscription, you can experience the Starbucks® coffees few others will ever taste. Each month, we'll send you an extremely limited offering—a crowning coffee achievement, shipped fresh from Seattle where it was roasted less than 48 hours before.*

SECURE YOUR SUBSCRIPTION NOW AT [STARBUCKS.COM/SUBSCRIPTION](https://www.starbucks.com/subscription)



© 2015 Starbucks Coffee Company. All rights reserved. SBX15-115893

Martyn Thompson

[www.art-dept.com](http://www.art-dept.com)

# Art Department



Martyn Thompson

[www.art-dept.com](http://www.art-dept.com)



# Art Department



Martyn Thompson

[www.art-dept.com](http://www.art-dept.com)

# Art Department



Martyn Thompson

[www.art-dept.com](http://www.art-dept.com)



# Art Department



Martyn Thompson

[www.art-dept.com](http://www.art-dept.com)

# Art Department



Martyn Thompson

[www.art-dept.com](http://www.art-dept.com)



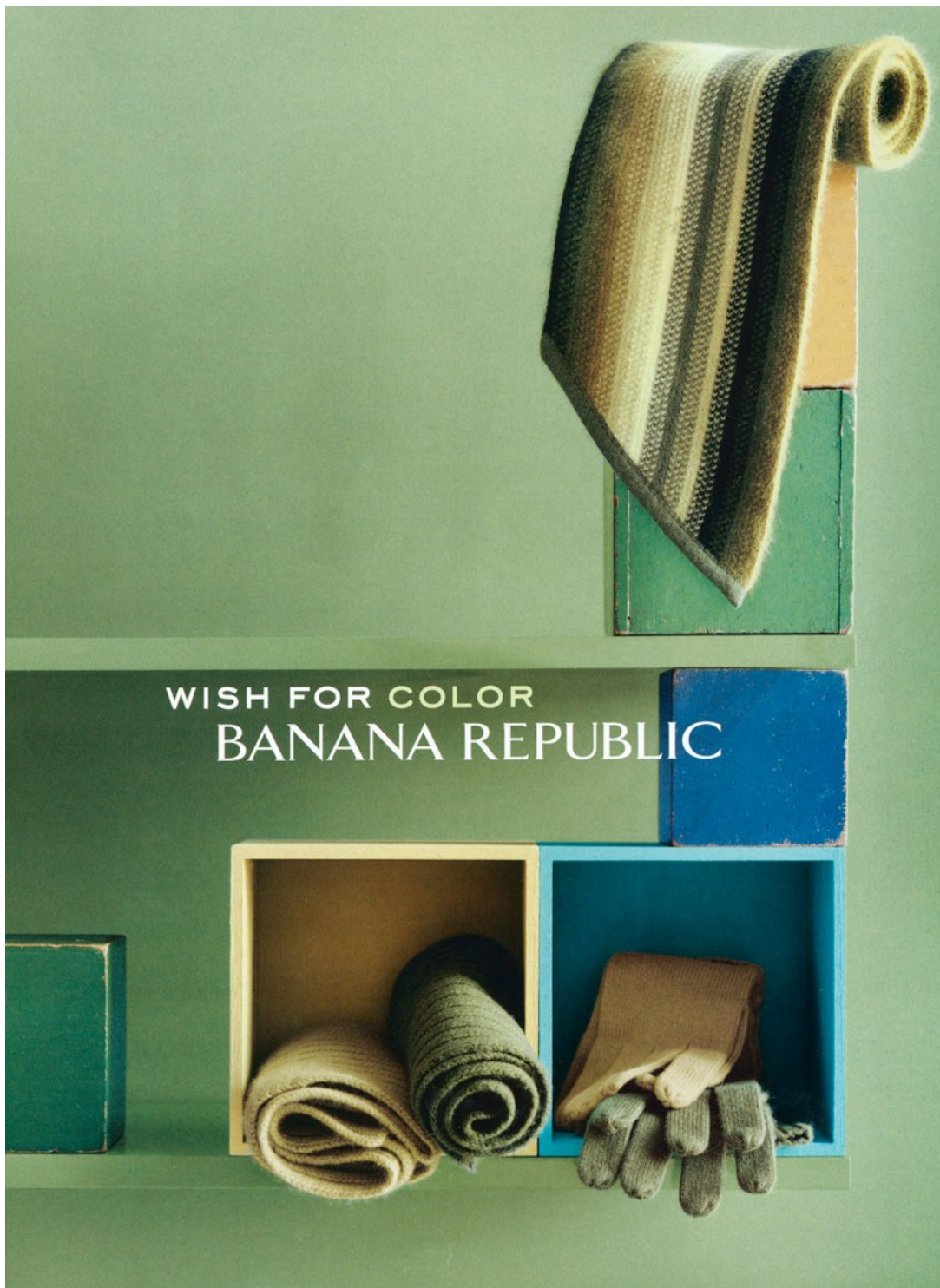
# Art Department



Martyn Thompson

[www.art-dept.com](http://www.art-dept.com)

# Art Department

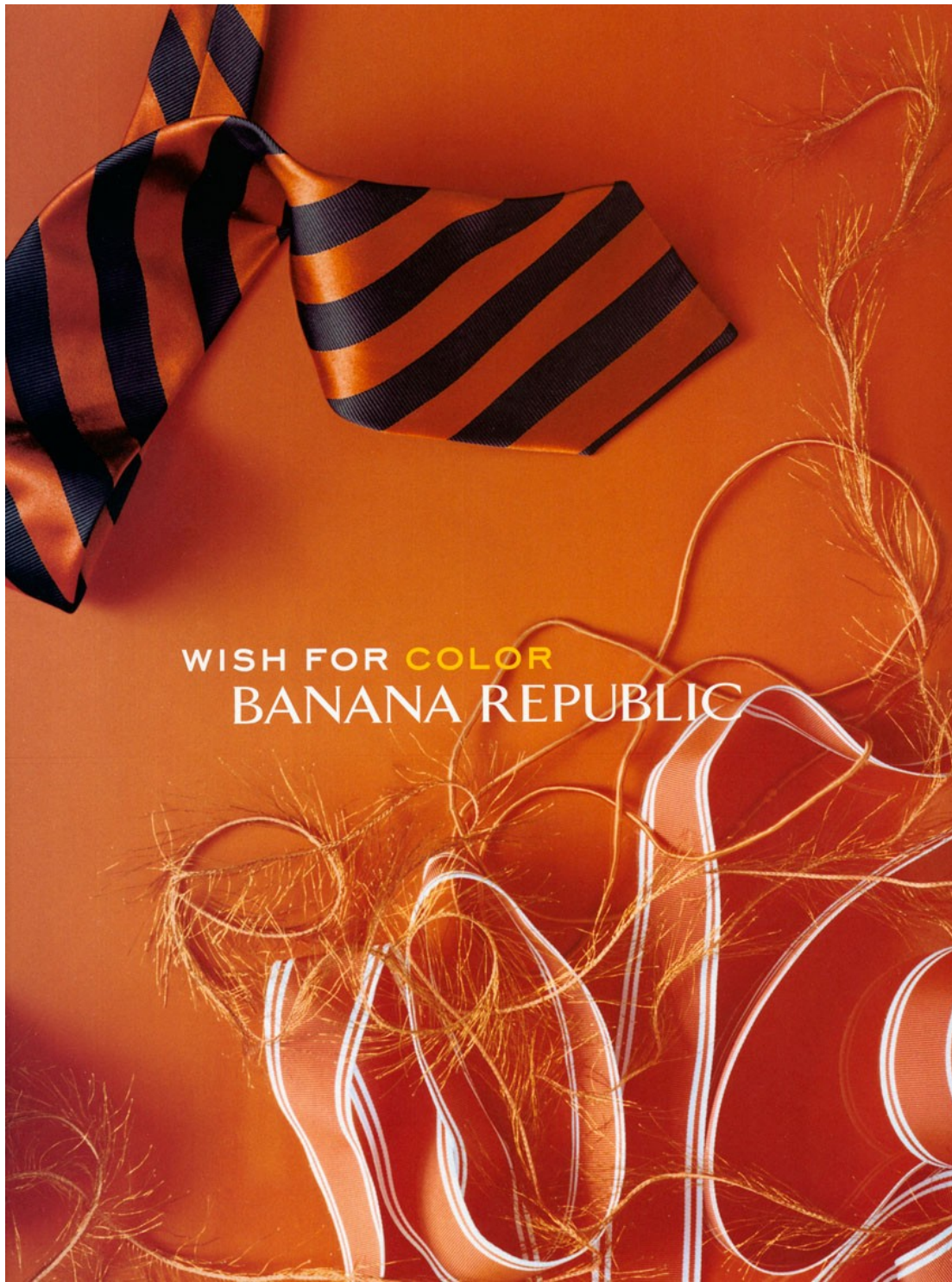


Martyn Thompson

[www.art-dept.com](http://www.art-dept.com)



# Art Department



Martyn Thompson

[www.art-dept.com](http://www.art-dept.com)



# Art Department



Martyn Thompson

[www.art-dept.com](http://www.art-dept.com)



# Art Department



Martyn Thompson

[www.art-dept.com](http://www.art-dept.com)

# Art Department

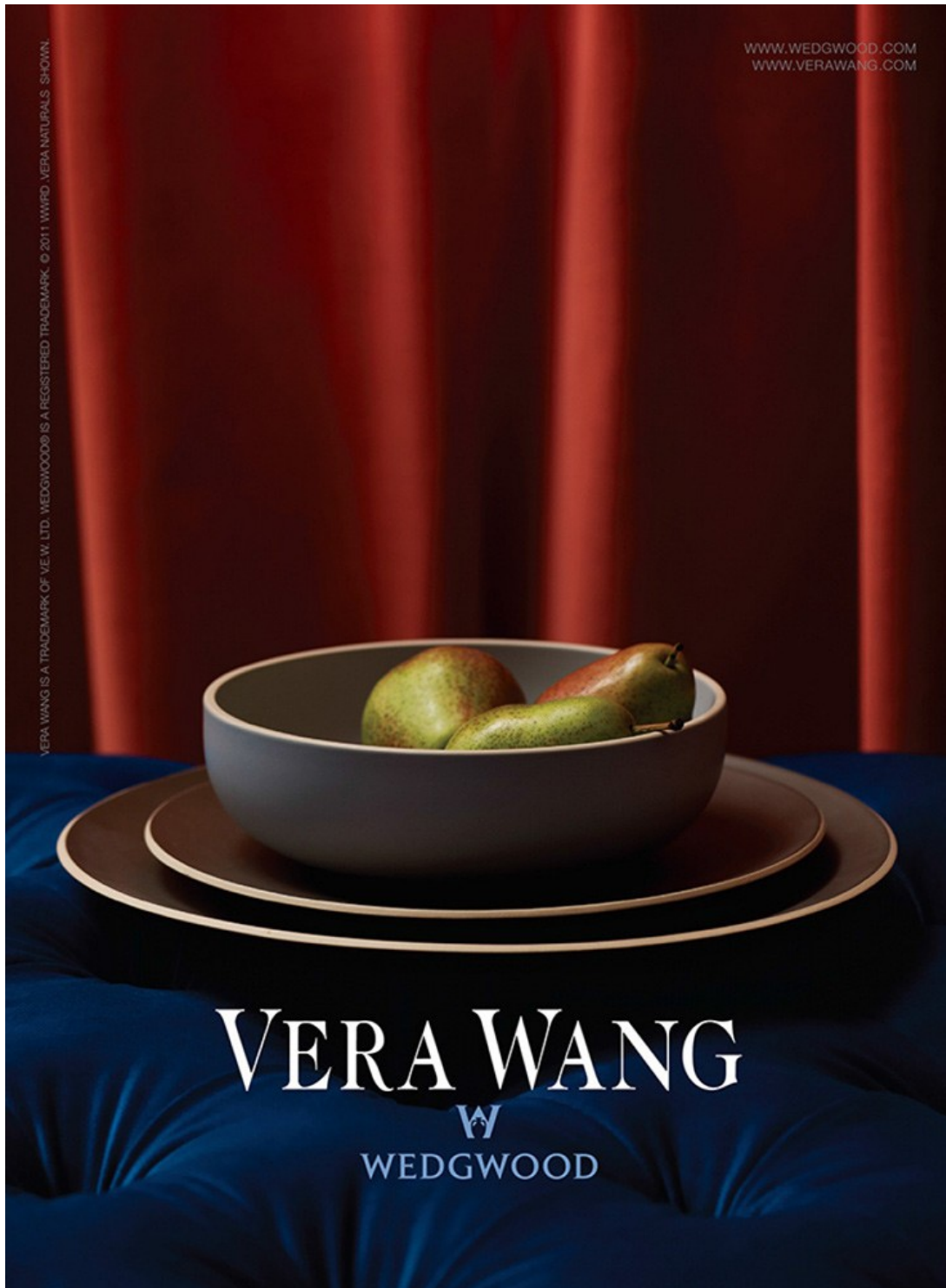


Martyn Thompson

[www.art-dept.com](http://www.art-dept.com)



# Art Department



Martyn Thompson

[www.art-dept.com](http://www.art-dept.com)