

Art Department



Martyn Thompson

www.art-dept.com

Art Department



Martyn Thompson

www.art-dept.com

Art Department



Martyn Thompson

www.art-dept.com

Art Department



Martyn Thompson

www.art-dept.com

Art Department



Martyn Thompson

www.art-dept.com

Art Department



Martyn Thompson

www.art-dept.com

Art Department



Martyn Thompson

www.art-dept.com

Art Department



Martyn Thompson

www.art-dept.com

Art Department



Martyn Thompson

www.art-dept.com

Art Department



Martyn Thompson

www.art-dept.com

Art Department



Martyn Thompson

www.art-dept.com

Art Department



Martyn Thompson

www.art-dept.com

Art Department



Martyn Thompson

www.art-dept.com

Art Department



Martyn Thompson

www.art-dept.com

Art Department



Martyn Thompson

www.art-dept.com

Art Department



Martyn Thompson

www.art-dept.com

Art Department



Martyn Thompson

www.art-dept.com

Art Department



Martyn Thompson

www.art-dept.com

Art Department



Martyn Thompson

www.art-dept.com

Art Department



Martyn Thompson

www.art-dept.com

Art Department



Martyn Thompson

www.art-dept.com

Art Department



Martyn Thompson

www.art-dept.com

Art Department



Martyn Thompson

www.art-dept.com

Art Department



Martyn Thompson

www.art-dept.com

Art Department



Martyn Thompson

www.art-dept.com

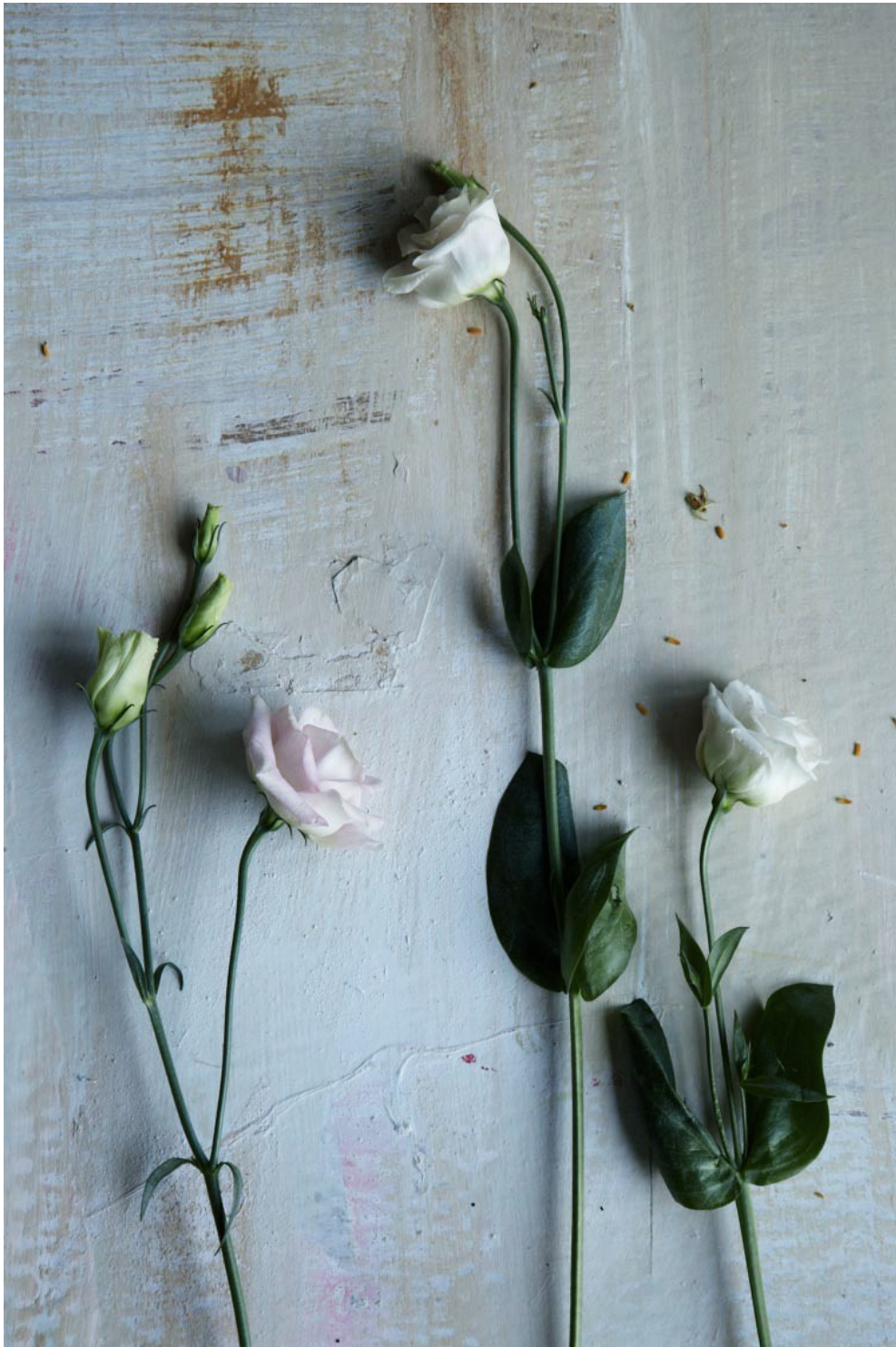
Art Department



Martyn Thompson

www.art-dept.com

Art Department



Martyn Thompson

www.art-dept.com

Art Department



Martyn Thompson

www.art-dept.com

Art Department



Martyn Thompson

www.art-dept.com

Art Department



Martyn Thompson

www.art-dept.com

Art Department



Martyn Thompson

www.art-dept.com

Art Department



69

GOOD LIVING

Home, Garden, Craft

TABLEAU

PERFECT UNION

There's no rule against combining dried plants with fresh blooms; the effect, in fact, can be unexpectedly striking. Here, feathery dried grasses and a large cecropia leaf add whimsy, texture, and height to a bright arrangement of cut flowers: pink 'Blushing Bride' protea, spiky blue-green eryngium, and oversized white protea.

PHOTOGRAPH BY
MARTYN THOMPSON

Martyn Thompson

www.art-dept.com

Art Department



Martyn Thompson

www.art-dept.com

Art Department



Borsa a soffietto
Bibliothèque
in vitello
multicolor, Prada.

SNAPSHOT

ACCESSORI PARTICOLARI. DA CATTURARE, INDOSSARE, CONDIVIDERE.

Foto MARTYN THOMPSON. Styling VANESSA GIUDICI.

Martyn Thompson

www.art-dept.com

Art Department



Martyn Thompson

www.art-dept.com

Art Department



Martyn Thompson

www.art-dept.com

Art Department



Martyn Thompson

www.art-dept.com

Art Department



Martyn Thompson

www.art-dept.com

Art Department



Martyn Thompson

www.art-dept.com

Art Department



Martyn Thompson

Art Department



Martyn Thompson

www.art-dept.com

Art Department



Martyn Thompson

www.art-dept.com

Art Department



Martyn Thompson

www.art-dept.com

Art Department



Martyn Thompson

www.art-dept.com

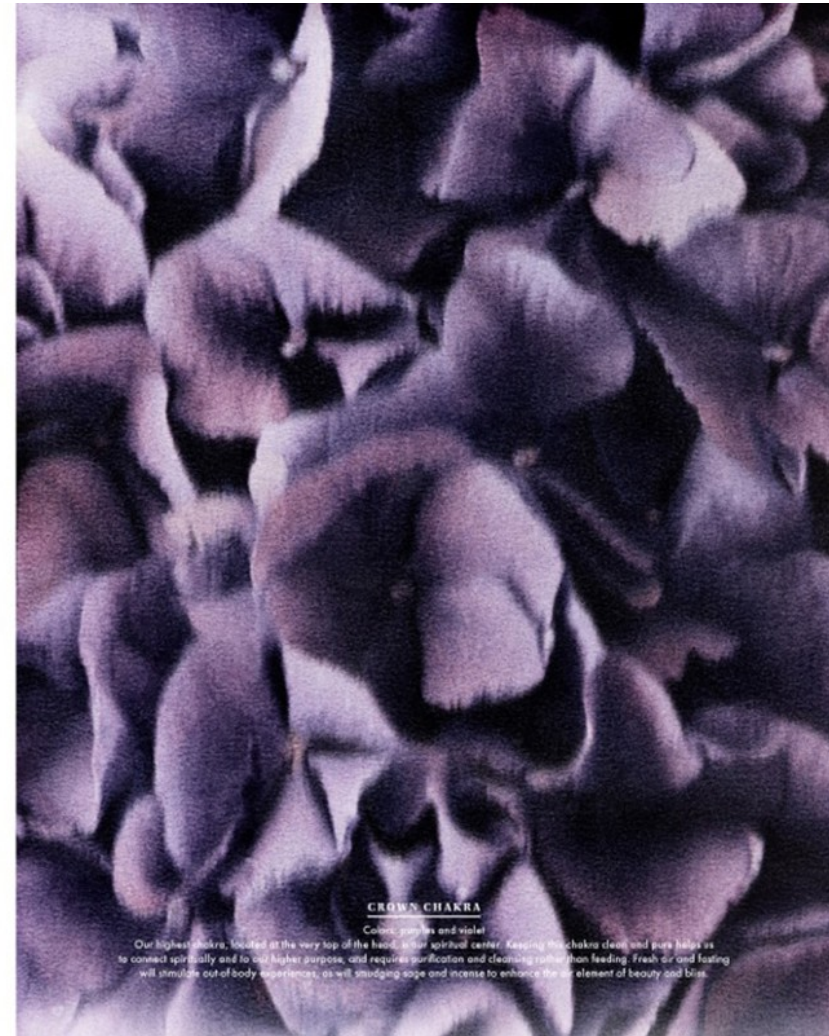
Art Department



Martyn Thompson

www.art-dept.com

Art Department



Martyn Thompson

www.art-dept.com

Art Department



Martyn Thompson

www.art-dept.com

Art Department



Martyn Thompson

www.art-dept.com

Art Department



Martyn Thompson

www.art-dept.com

Art Department



Martyn Thompson

www.art-dept.com

Art Department



Martyn Thompson

www.art-dept.com

Art Department



Martyn Thompson

www.art-dept.com

Art Department



Martyn Thompson

www.art-dept.com

Art Department



Martyn Thompson

www.art-dept.com

Art Department



Martyn Thompson

www.art-dept.com

Art Department



Martyn Thompson

www.art-dept.com

Art Department



Martyn Thompson

www.art-dept.com

Art Department



Martyn Thompson

www.art-dept.com

Art Department



Martyn Thompson

www.art-dept.com

Art Department



Martyn Thompson

www.art-dept.com

Art Department



Martyn Thompson

www.art-dept.com

Art Department



Martyn Thompson

www.art-dept.com

Art Department



Martyn Thompson

www.art-dept.com

Art Department



Martyn Thompson

www.art-dept.com

Art Department



Martyn Thompson

www.art-dept.com

Art Department



Martyn Thompson

www.art-dept.com

Art Department



Martyn Thompson

www.art-dept.com

Art Department



Martyn Thompson

www.art-dept.com

Art Department



Martyn Thompson

www.art-dept.com

Art Department



Martyn Thompson

www.art-dept.com

Art Department



Martyn Thompson

www.art-dept.com

Art Department



Martyn Thompson

www.art-dept.com

Art Department



Martyn Thompson

www.art-dept.com

Art Department



Martyn Thompson

www.art-dept.com

Art Department



Martyn Thompson

www.art-dept.com

Art Department



Martyn Thompson

www.art-dept.com

Art Department



Martyn Thompson

www.art-dept.com

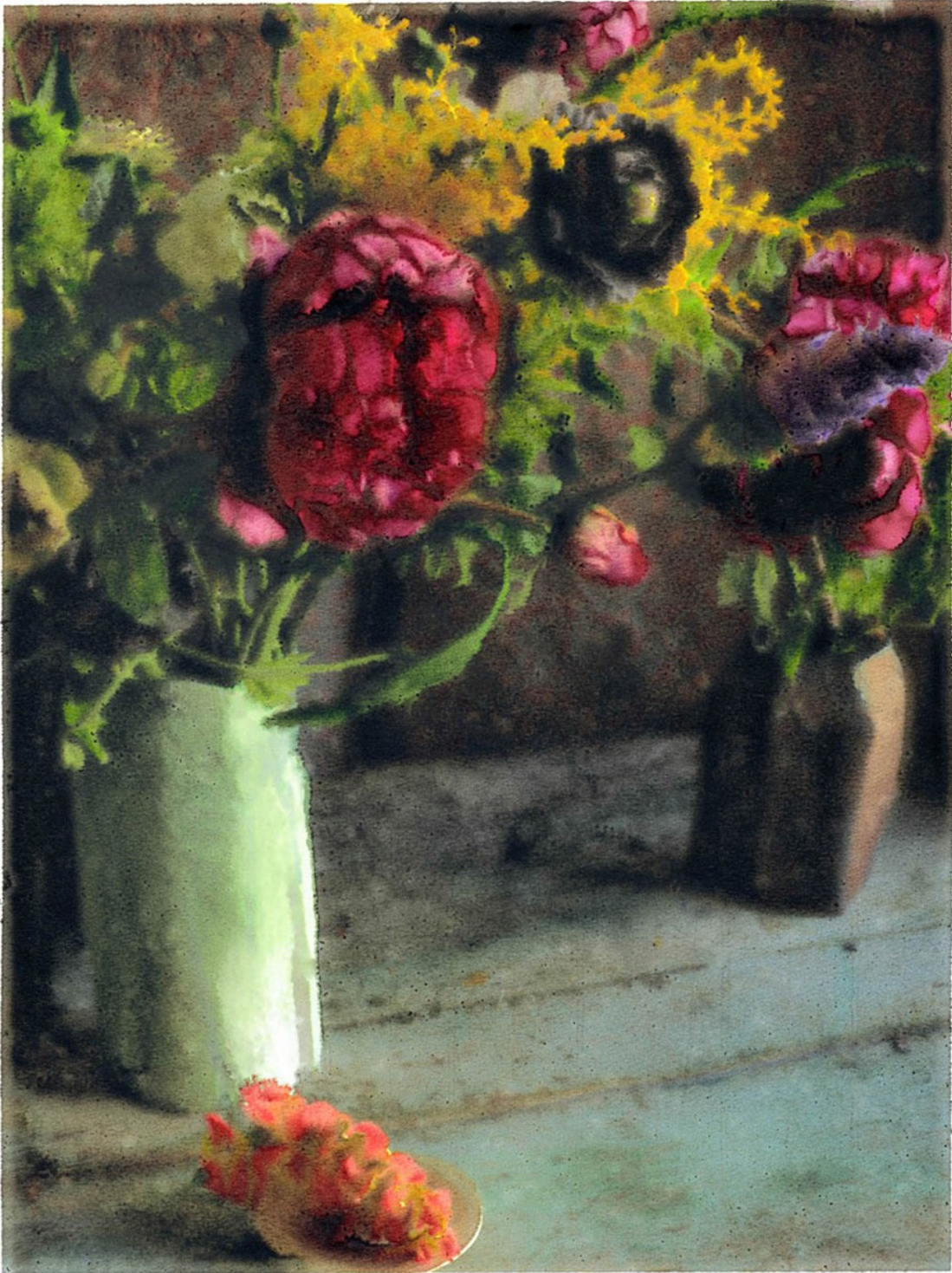
Art Department



Martyn Thompson

www.art-dept.com

Art Department



Martyn Thompson

www.art-dept.com

Art Department



Martyn Thompson

www.art-dept.com

Art Department



Martyn Thompson

www.art-dept.com

Art Department



Martyn Thompson

www.art-dept.com

Art Department



Martyn Thompson

www.art-dept.com

Art Department



Martyn Thompson

www.art-dept.com

Art Department



Martyn Thompson

www.art-dept.com

Art Department



Martyn Thompson

www.art-dept.com

Art Department



Martyn Thompson

www.art-dept.com