

Art Department



GILT COMPLEX

THE GILT COMPLEX IS THE CENTER OF THE ARTS AND CRAFTS MOVEMENT OF THE 19th CENTURY. THE GILT COMPLEX IS THE CENTER OF THE ARTS AND CRAFTS MOVEMENT OF THE 19th CENTURY. THE GILT COMPLEX IS THE CENTER OF THE ARTS AND CRAFTS MOVEMENT OF THE 19th CENTURY.

THE HOUSE DRAWING ROOM is a grand and ornate space, featuring a large chandelier, a large rug, and a wall covered in framed artworks. The room is decorated with various decorative items, including vases and framed art, creating a rich and eclectic aesthetic.



Pieter Estersohn

www.art-dept.com

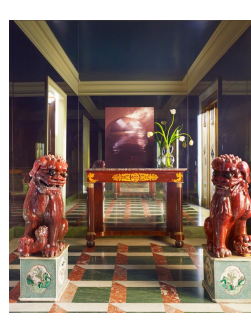
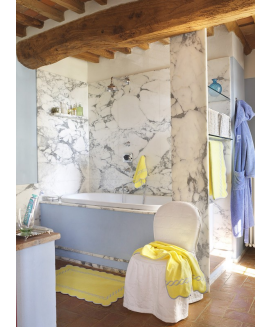
Art Department



Pieter Estersohn

www.art-dept.com

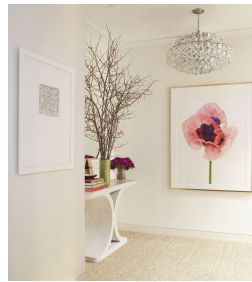
Art Department



Pieter Estersohn

www.art-dept.com

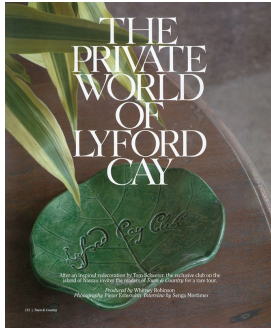
Art Department



Pieter Estersohn

www.art-dept.com

Art Department



Pieter Estersohn

www.art-dept.com

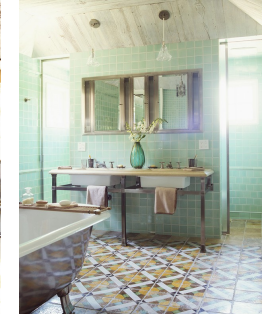
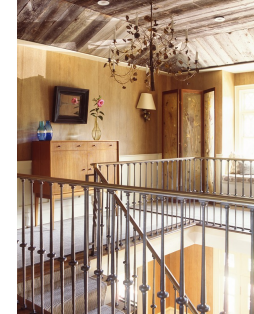
Art Department



Pieter Estersohn

www.art-dept.com

Art Department



Pieter Estersohn

www.art-dept.com

Art Department



Pieter Estersohn

www.art-dept.com