

Art Department



Pieter Estersohn

www.art-dept.com

Art Department



Pieter Estersohn

www.art-dept.com

Art Department



Pieter Estersohn

www.art-dept.com

Art Department



Pieter Estersohn

www.art-dept.com

Art Department



Pieter Estersohn

www.art-dept.com

Art Department



Pieter Estersohn

www.art-dept.com

Art Department



Pieter Estersohn

www.art-dept.com

Art Department



Pieter Estersohn

www.art-dept.com

Art Department



Pieter Estersohn

www.art-dept.com

Art Department



Pieter Estersohn

www.art-dept.com

Art Department



Pieter Estersohn

www.art-dept.com

Art Department



Pieter Estersohn

www.art-dept.com

Art Department



Pieter Estersohn

www.art-dept.com

Art Department



Pieter Estersohn

www.art-dept.com

Art Department



Pieter Estersohn

www.art-dept.com

Art Department



Ted Flato and Karla Greer of Lake | Flato Architects oversee Hillside House, a temporary home partially submerged in a steep plot in Austin, Texas. The interiors were conceived in collaboration with decorator Terry Hunziker, and the landscape was transformed by the Garden Design Studio. For details see Sources.

CROWNING ACHIEVEMENT

On a hill overlooking downtown Austin, Texas, Lake | Flato Architects and designer Terry Hunziker collaborate on an airy minimalist retreat inventively anchored to its magnificent site
TEXT BY PHILIP NOBEL PHOTOGRAPHY BY PIETER ESTERSOHN PRODUCED BY HOWARD CHRISTIAN

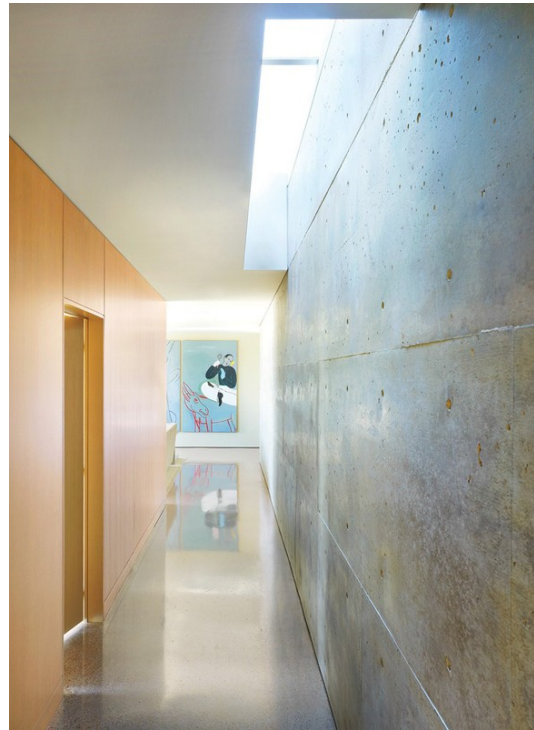
107



Pieter Estersohn

www.art-dept.com

Art Department



Pieter Estersohn

www.art-dept.com

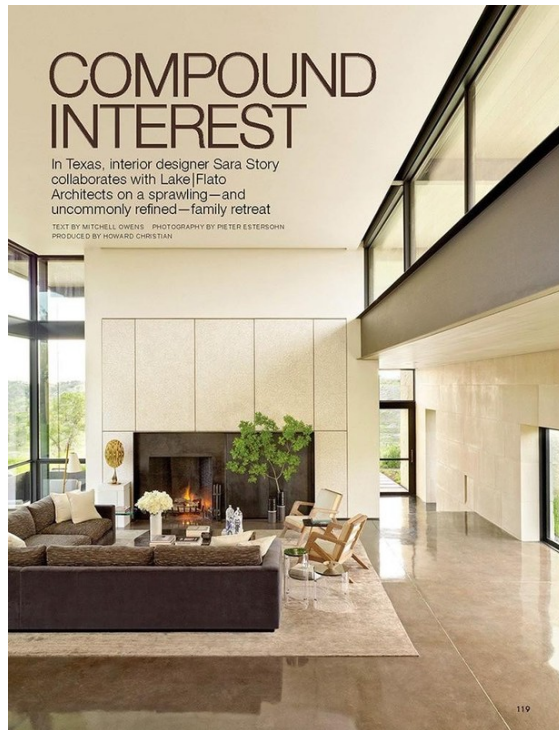
Art Department



Pieter Estersohn

www.art-dept.com

Art Department



Pieter Estersohn

www.art-dept.com

Art Department



Pieter Estersohn

www.art-dept.com

Art Department



Pieter Estersohn

www.art-dept.com

Art Department



Pieter Estersohn

www.art-dept.com

Art Department



Pieter Estersohn

www.art-dept.com

Art Department



Pieter Estersohn

www.art-dept.com

Art Department



LIVING ON THE EDGE

On a craggy Nova Scotia peninsula, a secluded glass-and-concrete retreat designed by architect Alexander Gorlin makes the most of its pristine surroundings

TEXT BY JUDITH THORMAN
PHOTOGRAPHY BY PIETER ESTERSON
PRODUCED BY ELIZABETH SVERBEYEFF BYRON
STYLED BY HOWARD CHRISTIAN



Alexander Gorlin Architects created a waterfront vacation home consisting of five concrete, steel, and glass volumes for an American client in North Harbor, Nova Scotia. Ray Fitzell Design designed the interiors. For details, see Sources.

29

Pieter Estersohn

www.art-dept.com

Art Department



Pieter Estersohn

www.art-dept.com

Art Department



Pieter Estersohn

www.art-dept.com

Art Department



Pieter Estersohn

www.art-dept.com

Art Department



Pieter Estersohn

www.art-dept.com

Art Department



Pieter Estersohn

www.art-dept.com

Art Department



Pieter Estersohn

www.art-dept.com

Art Department



Pieter Estersohn

www.art-dept.com

Art Department



Pieter Estersohn

www.art-dept.com

Art Department



Pieter Estersohn

www.art-dept.com

Art Department



Pieter Estersohn

www.art-dept.com

Art Department



Pieter Estersohn

www.art-dept.com

Art Department



Pieter Estersohn

www.art-dept.com

Art Department



Pieter Estersohn

www.art-dept.com

Art Department



Pieter Estersohn

www.art-dept.com

Art Department



Pieter Estersohn

www.art-dept.com

Art Department



Pieter Estersohn

www.art-dept.com

Art Department



Pieter Estersohn

www.art-dept.com

Art Department

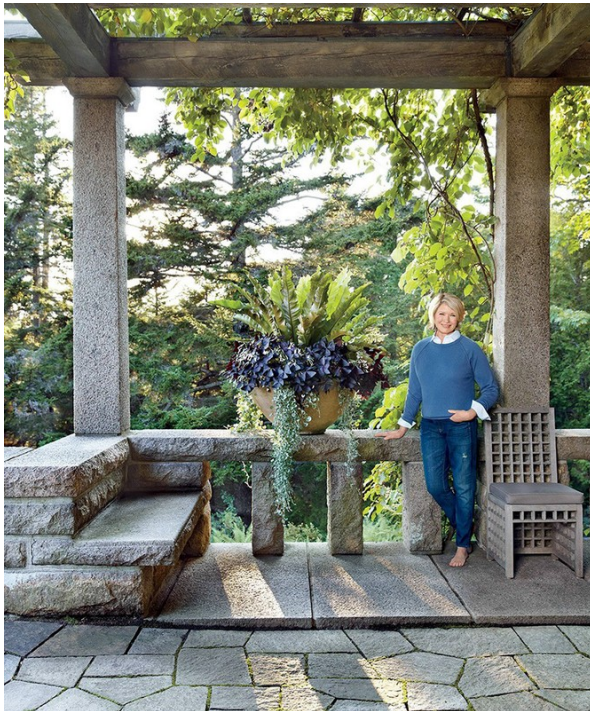


A pair of antique glazed terra-cotta sphinxes by Ende Miller preside over the terrace at Skylands. In the center, a huge pot by Eric Soderlund shows off a blue agave surrounded by holly hocks, an ice-ice plant. The two concrete pots in front are by the Maine-based pottery Landerers. The agaves are under glass, and with various trailing succulents. The wall around the edge of the terrace is just the right height for sitting and looking out at the water.

TERRACE IN THE TREETOPS

At her home in Maine, Martha decorates the outdoor space with massive pots of plants that enhance the natural beauty of the surroundings.

PHOTOGRAPHS BY PIETER ESTERSON



Pieter Estersohn

www.art-dept.com

Art Department



Pieter Estersohn

www.art-dept.com

Art Department



Pieter Estersohn

www.art-dept.com

Art Department



Pieter Estersohn

www.art-dept.com

Art Department



Pieter Estersohn

www.art-dept.com

Art Department



Pieter Estersohn

www.art-dept.com

Art Department



Pieter Estersohn

www.art-dept.com

Art Department



Pieter Estersohn

Art Department



Pieter Estersohn

www.art-dept.com

Art Department



Pieter Estersohn

www.art-dept.com

Art Department



Pieter Estersohn

www.art-dept.com

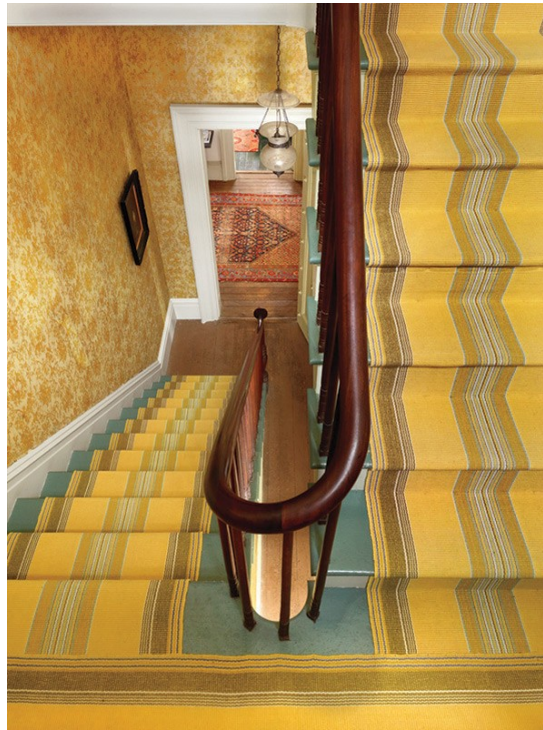
Art Department



Pieter Estersohn

www.art-dept.com

Art Department



Pieter Estersohn

www.art-dept.com

Art Department



Pieter Estersohn

www.art-dept.com

Art Department



Pieter Estersohn

www.art-dept.com

Art Department



Pieter Estersohn

www.art-dept.com

Art Department



Pieter Estersohn

www.art-dept.com

Art Department



Pieter Estersohn

www.art-dept.com

Art Department



Pieter Estersohn

www.art-dept.com

Art Department



Pieter Estersohn

www.art-dept.com

Art Department



Pieter Estersohn

www.art-dept.com

Art Department



Pieter Estersohn

www.art-dept.com

Art Department



Pieter Estersohn

www.art-dept.com

Art Department



Pieter Estersohn

www.art-dept.com

Art Department



Pieter Estersohn

www.art-dept.com

Art Department



Pieter Estersohn

www.art-dept.com

Art Department



Designers Jesse Carrier and Mara Miller of the Manhattan firm Carrier and Co. interiors outfitted Susan and Gary Garrabrant's Southampton, New York, home, which was built by John David Ross Architects. In the living room, a 1960 Perle Fine painting is mounted between French doors curtained with a Carolina Irving linen. Two sofas, custom made by Luther Quintana and covered in a Chiapas Textiles fabric; face a Karl Springer cocktail table (left) and a pair of antique Spanish live tables; the rug is by Patterson Flynn Martin. For details see sources.

LOCAL COLOR

At an effortlessly chic Hamptons retreat decorated by Carrier and Co., lively regional artifacts, artwork, and furnishings take pride of place

TEXT BY RAUL BARRENECHE PHOTOGRAPHY BY PIETER ESTERSOHN PRODUCED BY HOWARD CHRISTIAN

163



Pieter Estersohn

www.art-dept.com

Art Department



Pieter Estersohn

www.art-dept.com

Art Department



Pieter Estersohn

www.art-dept.com

Art Department



Pieter Estersohn

www.art-dept.com

Art Department



Pieter Estersohn

www.art-dept.com

Art Department



Pieter Estersohn

www.art-dept.com

Art Department



Pieter Estersohn

www.art-dept.com

Art Department



Pieter Estersohn

www.art-dept.com

Art Department



Pieter Estersohn

www.art-dept.com

Art Department

Light + Lively

Featuring exotic trompe l'oeil, tropical art, and a sprightly palette, Nancy and Bill Morton's historic Florida home is a Gulf Coast paradise

TEXT BY ROBERT JANJIGIAN PHOTOGRAPHY BY PIETER ESTERSONH PRODUCED BY HOWARD CHRISTIAN



Above: The Boca Grande, Florida, residence of decorator Nancy Morton and her husband, Bill, was designed in 1940 by architect F. Burrill Hoffman, Jr. Opposite: A plunge pool centers the front courtyard; the ceramic tiles and travertine pavers are by Country Floors. For details see Sources.

148



Pieter Estersohn

www.art-dept.com

Art Department



Pieter Estersohn

www.art-dept.com

Art Department



Pieter Estersohn

www.art-dept.com

Art Department



Pieter Estersohn

www.art-dept.com

Art Department



Pieter Estersohn

www.art-dept.com

Art Department



Pieter Estersohn

www.art-dept.com

Art Department



Pieter Estersohn

www.art-dept.com

Art Department



Pieter Estersohn

www.art-dept.com

Art Department



Pieter Estersohn

www.art-dept.com

Art Department



Pieter Estersohn

www.art-dept.com

Art Department



Pieter Estersohn

www.art-dept.com

Art Department



Pieter Estersohn

www.art-dept.com

Art Department



Pieter Estersohn

www.art-dept.com

Art Department



Pieter Estersohn

www.art-dept.com

Art Department



Pieter Estersohn

www.art-dept.com

Art Department



IN A NEW LIGHT

Nashville philanthropists and photography collectors Jennifer and Billy Frist break with tradition in a soaring, sun-drenched contemporary dwelling designed with family and entertaining in mind

TEXT BY MITCHELL OWENS
PHOTOGRAPHY BY PIETER ESTERSONN
PRODUCED BY HOWARD CHRISTIAN

Left: A floral light sculpture by U-Ram Cho glimmers in the living room of Jennifer and Billy Frist's Tennessee house, which was renovated by the architecture firm CH24 and decorated by Madeline Booth & Ferrer Interiors. At far left, the curtains are of a Great Plains fabric, and a tree trunk-like cocktail table by Chrisa stands near a vintage Terrell Partridge armchair from Duane Modern. The Williams Deane Design slipper chairs are upholstered in a Tauk shearing by Larsen, and the Christophe Delcourt ottoman is from Ralph Pucci International; the new credenza at right is by BDDW. For details see Sources.

75



Pieter Estersohn

www.art-dept.com

Art Department



Pieter Estersohn

www.art-dept.com

Art Department



Pieter Estersohn

www.art-dept.com

Art Department



Pieter Estersohn

www.art-dept.com

Art Department



Pieter Estersohn

www.art-dept.com

Art Department



Pieter Estersohn

Art Department



Aerin's World

TEXT BY BRAD GOLDFARB PHOTOGRAPHY BY PIETER ESTERSONH PRODUCED BY PARKER BOWIE LARSON AND MICHAEL REYNOLDS



Pieter Estersohn

www.art-dept.com

Art Department



Field of Vision

Couturier Ralph Rucci extends his creative range with a furniture collection for Holly Hunt that is as exquisitely conceived and timeless as his acclaimed fashion designs

TEXT BY MITCHELL OWENS
PHOTOGRAPHY BY PIETER ESTERSON
PRODUCED BY MICHAEL REYNOLDS

Fashion designer and artist Ralph Rucci shares the stage with several of his creations: a wood-crope dress inset with silk tulle, from his spring 2013 line; a blouse from the fall 2006; a two-panel artwork, and a walnut chandelier from his debut collection of furniture for Holly Hunt. For details see Sources. To see an exclusive video interview with Rucci, go to archlogist.com/video.

141

Pieter Estersohn

www.art-dept.com