

Art Department



Classic Inclination

With a nod to the villas of Palladio, architect William Hablinski and design firm Atelier AM devise a Las Vegas house of sublime proportions

TEXT BY MAYER RUS
PHOTOGRAPHY BY PIETER ESTERSON
PRODUCED BY HOWARD CHRISTIAN

Pieter Estersohn

www.art-dept.com

Art Department



Pieter Estersohn

www.art-dept.com

Art Department



Pieter Estersohn

www.art-dept.com

Art Department



Pieter Estersohn

www.art-dept.com

Art Department



Pieter Estersohn

www.art-dept.com

Art Department



Pieter Estersohn

www.art-dept.com

Art Department



Pieter Estersohn

www.art-dept.com

Art Department



Pieter Estersohn

www.art-dept.com

Art Department



Pieter Estersohn

www.art-dept.com

Art Department



Pieter Estersohn

www.art-dept.com

Art Department



Pieter Estersohn

www.art-dept.com

Art Department



Pieter Estersohn

www.art-dept.com

Art Department



Pieter Estersohn

www.art-dept.com

Art Department



Pieter Estersohn

www.art-dept.com

Art Department



Pieter Estersohn

www.art-dept.com

Art Department



Pieter Estersohn

www.art-dept.com

Art Department



Pieter Estersohn

www.art-dept.com

Art Department



Pieter Estersohn

www.art-dept.com

Art Department



Pieter Estersohn

www.art-dept.com

Art Department



Pieter Estersohn

www.art-dept.com

Art Department



Pieter Estersohn

www.art-dept.com

Art Department



Pieter Estersohn

www.art-dept.com

Art Department



Pieter Estersohn

www.art-dept.com

Art Department



Pieter Estersohn

www.art-dept.com

Art Department



Pieter Estersohn

www.art-dept.com

Art Department



Pieter Estersohn

www.art-dept.com

Art Department



Pieter Estersohn

www.art-dept.com

Art Department



Pieter Estersohn

www.art-dept.com

Art Department



Pieter Estersohn

www.art-dept.com

Art Department



Pieter Estersohn

www.art-dept.com

Art Department



Pieter Estersohn

www.art-dept.com

Art Department



Pieter Estersohn

www.art-dept.com

Art Department



Pieter Estersohn

www.art-dept.com

Art Department



Pieter Estersohn

www.art-dept.com

Art Department



Pieter Estersohn

www.art-dept.com

Art Department

MODERN FAMILY

The last residence built by architect Louis Kahn—to house “three boys, a dog, and a goldfish,” in 1973—has undergone a revamping by designer Jennifer Post. The serene results respect the past, but with an eye for the present.

By ALEXANDRA LANGE

When Steven and Toby Korman hired architect Louis Kahn, in 1971, he was at the peak of his career: He was working on the Kimbell Art Museum, in Fort Worth, Texas; the Phillips Exeter Academy Library, in New Hampshire; and the National Assembly Building of Bangladesh, in Dhaka; and had already finished the Salk Institute for Biological Studies, in La Jolla, California (now on many lists of the best 20th-century American architecture). Today Kahn is also known for the Franklin D. Roosevelt Four Freedoms Park, on New York's Roosevelt Island, whose 1974 design was completed posthumously in 2012. A

charismatic teacher, Kahn had moved architecture away from steel and glass and toward simple, monumental forms, usually made from concrete, brick, and wood. The Kormans had been watching Kahn's work in Philadelphia, where his practice was based, and pursued him through mutual friends for about a year to be their architect. Steve Korman had run his family's building-supply business in the 1960s (he later managed their many rental properties), which gave him an appreciation for Kahn's care with materials.

Even as he built significant public works, Kahn also designed houses (nine were built in and around Philadelphia alone), listening closely to

Along the entrance-way stand steel sculptures by artist Robinson Fendrich, a star student of Louis Kahn's. Owner Larry Korman remembers lifting them into position as a child, under Kahn's guidance.

Photographs by PIETER ESTERSON • Styled by LILI ABIR REGEN

109

Pieter Estersohn

www.art-dept.com

Art Department



Pieter Estersohn

www.art-dept.com

Art Department



Pieter Estersohn

www.art-dept.com

Art Department



Pieter Estersohn

www.art-dept.com

Art Department



Pieter Estersohn

www.art-dept.com

Art Department



Ted Flato and Karla Greer of Lake | Flato Architects devised Hillside House, a two-story home partially submerged in its steep plot in Austin, Texas. The interiors were conceived in collaboration with decorator Terry Hunziker, and the landscape was transformed by the Garden Design Studio. For details see Sources.

CROWNING ACHIEVEMENT

On a hill overlooking downtown Austin, Texas, Lake | Flato Architects and designer Terry Hunziker collaborate on an airy minimalist retreat inventively anchored to its magnificent site

TEXT BY PHILIP NOBEL PHOTOGRAPHY BY PIETER ESTERSON PRODUCED BY HOWARD CHRISTIAN

107

Pieter Estersohn

www.art-dept.com

Art Department



Pieter Estersohn

www.art-dept.com

Art Department



Pieter Estersohn

www.art-dept.com

Art Department



Pieter Estersohn

www.art-dept.com

Art Department



Pieter Estersohn

www.art-dept.com

Art Department



Pieter Estersohn

www.art-dept.com

Art Department



Pieter Estersohn

www.art-dept.com

Art Department



Pieter Estersohn

www.art-dept.com

Art Department

COMPOUND INTEREST

In Texas, interior designer Sara Story collaborates with Lake|Flato Architects on a sprawling—and uncommonly refined—family retreat

TEXT BY MITCHELL OWENS PHOTOGRAPHY BY PIETER ESTERSOHN
PRODUCED BY HOWARD CHRISTIAN



119

Pieter Estersohn

www.art-dept.com

Art Department



Pieter Estersohn

www.art-dept.com

Art Department



Pieter Estersohn

www.art-dept.com

Art Department



Pieter Estersohn

www.art-dept.com

Art Department



Pieter Estersohn

www.art-dept.com

Art Department



Pieter Estersohn

www.art-dept.com

Art Department



Pieter Estersohn

www.art-dept.com

Art Department



Pieter Estersohn

www.art-dept.com

Art Department



Pieter Estersohn

www.art-dept.com

Art Department



Pieter Estersohn

www.art-dept.com

Art Department



Pieter Estersohn

www.art-dept.com

Art Department



Pieter Estersohn

www.art-dept.com

Art Department



Pieter Estersohn

www.art-dept.com

Art Department



Pieter Estersohn

www.art-dept.com

Art Department

LIVING ON THE EDGE

On a craggy Nova Scotia peninsula, a secluded glass-and-concrete retreat designed by architect Alexander Gorlin makes the most of its pristine surroundings

TEXT BY JUDITH THURMAN
PHOTOGRAPHY BY PIETER ESTERSON
PRODUCED BY ELIZABETH SVERBEYEFF BYRON
STYLED BY HOWARD CHRISTIAN

56

Alexander Gorlin Architects created a waterfront vacation home consisting of five concrete, steel, and glass volumes for an American client in Ketch Harbour, Nova Scotia. Ray Frizzell Design devised the interiors. For details see Sources.

Pieter Estersohn

www.art-dept.com

Art Department



Pieter Estersohn

www.art-dept.com

Art Department



Pieter Estersohn

www.art-dept.com

Art Department



Pieter Estersohn

www.art-dept.com

Art Department



Pieter Estersohn

www.art-dept.com

Art Department



Pieter Estersohn

www.art-dept.com

Art Department



Pieter Estersohn

www.art-dept.com

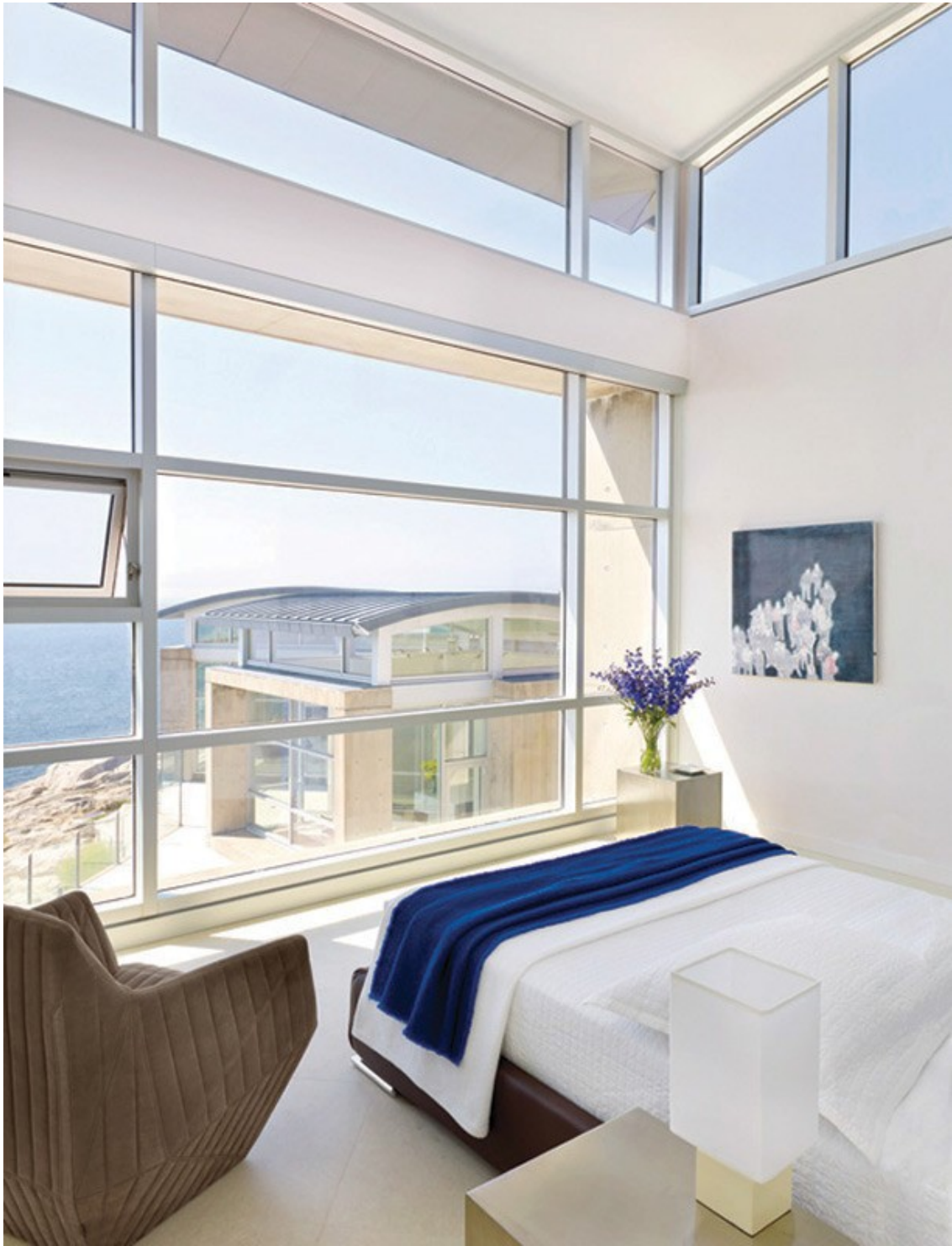
Art Department



Pieter Estersohn

www.art-dept.com

Art Department



Pieter Estersohn

www.art-dept.com

Art Department



LINES IN THE SAND

Olson Kundig Architects and designer Terry Hunziker collaborate on a boldly geometric oceanfront retreat that nods to its stunning setting in Los Cabos, Mexico

TEXT BY MAYER RUS
PHOTOGRAPHY BY PIETER ESTERSONH
PRODUCED BY HOWARD CHRISTIAN

158

Jim Olson of Olson Kundig Architects conceived this beach getaway in San José del Cabo, Mexico, for a longtime friend and client; designer Terry Hunziker furnished the interiors. For details see Sources.

Pieter Estersohn

www.art-dept.com

Art Department



Pieter Estersohn

www.art-dept.com

Art Department



Pieter Estersohn

www.art-dept.com

Art Department



Pieter Estersohn

www.art-dept.com

Art Department



Pieter Estersohn

www.art-dept.com

Art Department



Pieter Estersohn

www.art-dept.com

Art Department



Pieter Estersohn

www.art-dept.com

Art Department



Pieter Estersohn

www.art-dept.com

Art Department



Pieter Estersohn

www.art-dept.com

Art Department



Pieter Estersohn

www.art-dept.com

Art Department



Pieter Estersohn

www.art-dept.com

Art Department



Pieter Estersohn

www.art-dept.com

Art Department



Pieter Estersohn

www.art-dept.com

Art Department



Pieter Estersohn

www.art-dept.com

Art Department



Pieter Estersohn

www.art-dept.com

Art Department



Pieter Estersohn

www.art-dept.com

Art Department



Pieter Estersohn

www.art-dept.com

Art Department



Pieter Estersohn

www.art-dept.com

Art Department



Pieter Estersohn

www.art-dept.com

Art Department



Pieter Estersohn

www.art-dept.com

Art Department



Pieter Estersohn

www.art-dept.com

Art Department



Pieter Estersohn

www.art-dept.com

Art Department



Pieter Estersohn

www.art-dept.com

Art Department



Pieter Estersohn

www.art-dept.com

Art Department



Pieter Estersohn

www.art-dept.com

Art Department



Pieter Estersohn

www.art-dept.com

Art Department



Pieter Estersohn

www.art-dept.com

Art Department



Pieter Estersohn

www.art-dept.com

Art Department



Pieter Estersohn

www.art-dept.com

Art Department



Pieter Estersohn

www.art-dept.com

Art Department



A pair of antique glazed terra-cotta sphinxes by Emilie Mulier preside over the terrace at Skylands. In the center, a huge pot by Eric Soderholtz shows off a blue agave surrounded by helichrysum, or licorice plant. The two concrete pots in front are by the Maine-based pottery Lunaform; the agaves are underplanted with various trailing succulents. The wall around the edge of the terrace is just the right height for sitting and looking out at the water.

TERRACE IN THE TREETOPS

At her home in Maine, Martha decorates the outdoor space with massive pots of plants that enhance the natural beauty of the surroundings.

PHOTOGRAPHS BY PIETER ESTERSONN

Pieter Estersohn

www.art-dept.com

Art Department



Pieter Estersohn

www.art-dept.com

Art Department



Pieter Estersohn

www.art-dept.com

Art Department



Pieter Estersohn

www.art-dept.com

Art Department



Pieter Estersohn

www.art-dept.com

Art Department



Pieter Estersohn

www.art-dept.com

Art Department



Pieter Estersohn

www.art-dept.com

Art Department



Pieter Estersohn

www.art-dept.com

Art Department



Pieter Estersohn

www.art-dept.com

Art Department



Pieter Estersohn

www.art-dept.com

Art Department



Pieter Estersohn

www.art-dept.com

Art Department



Pieter Estersohn

www.art-dept.com

Art Department



Pieter Estersohn

www.art-dept.com

Art Department



Pieter Estersohn

www.art-dept.com

Art Department



Pieter Estersohn

www.art-dept.com

Art Department



Pieter Estersohn

www.art-dept.com

Art Department



Pieter Estersohn

www.art-dept.com

Art Department

Jewel on the Lake

Architect Bobby McAlpine and interior designer Ray Booth collaborate on a Cape Dutch-style home in Baton Rouge suffused with light and old-world refinement

TEXT BY JULIA REED PHOTOGRAPHY BY PIETER ESTERSOHN PRODUCED BY HOWARD CHRISTIAN



Rising along a tree-lined lakefront in Baton Rouge, Louisiana, is a romantic Cape Dutch-inspired house designed by McAlpine Tankersley Architecture, and decorated by McAlpine Booth & Ferrier Interiors. For details see Sources.

153

Pieter Estersohn

www.art-dept.com

Art Department



Pieter Estersohn

www.art-dept.com

Art Department



Pieter Estersohn

www.art-dept.com

Art Department



Pieter Estersohn

www.art-dept.com

Art Department



Pieter Estersohn

www.art-dept.com

Art Department



Pieter Estersohn

www.art-dept.com

Art Department



Pieter Estersohn

www.art-dept.com

Art Department



Pieter Estersohn

www.art-dept.com

Art Department



Pieter Estersohn

www.art-dept.com

Art Department



Pieter Estersohn

www.art-dept.com

Art Department



Pieter Estersohn

www.art-dept.com

Art Department



Pieter Estersohn

www.art-dept.com

Art Department



Pieter Estersohn

www.art-dept.com

Art Department



Pieter Estersohn

www.art-dept.com

Art Department



Pieter Estersohn

www.art-dept.com

Art Department



Pieter Estersohn

www.art-dept.com

Art Department



Pieter Estersohn

www.art-dept.com

Art Department



Pieter Estersohn

www.art-dept.com

Art Department



Pieter Estersohn

www.art-dept.com

Art Department



Pieter Estersohn

www.art-dept.com

Art Department



Pieter Estersohn

www.art-dept.com

Art Department



Pieter Estersohn

www.art-dept.com

Art Department



Pieter Estersohn

www.art-dept.com

Art Department



Pieter Estersohn

www.art-dept.com

Art Department



Pieter Estersohn

www.art-dept.com

Art Department



Pieter Estersohn

www.art-dept.com

Art Department



Pieter Estersohn

www.art-dept.com

Art Department



Pieter Estersohn

www.art-dept.com

Art Department



Pieter Estersohn

www.art-dept.com

Art Department



Pieter Estersohn

www.art-dept.com

Art Department



The master bedroom, lined in a pleated blue fabric by JAB Anstötz, is highlighted by a show-stopping antique Venetian headboard, which features a ruched-velvet edge. Painted-minor doors accent the 19th-century French armoire, and the carpet is by CodiMat.

Pieter Estersohn

www.art-dept.com

Art Department



A vintage reproduction of Dufour's Monuments of Paris wallpaper lines the double parlor in the 1830s New York townhouse of artistic consultant Andrea Anson. Pieces of 19th-century dollhouse, inherited from Anson's parents, are displayed above the doorway. For details see sources.

194

HIGH NOTES

In his 1830s Manhattan townhouse, music-world consultant Andrea Anson lives amid colorful rooms layered with African artifacts, European heirlooms, and fond memories

TEXT BY MITCHELL OWENS PHOTOGRAPHY BY PIETER ESTERSON PRODUCED BY HOWARD CHRISTIAN

Pieter Estersohn

www.art-dept.com

Art Department



Pieter Estersohn

www.art-dept.com

Art Department



Pieter Estersohn

www.art-dept.com

Art Department



Pieter Estersohn

www.art-dept.com

Art Department



Pieter Estersohn

www.art-dept.com

Art Department



A GREAT ESCAPE

Inspired by the fabled Gilded Age great camps in New York's Adirondack Mountains, architecture firm Shope Reno Wharton and designer Thom Filicia create a ravishing family retreat on the shores of Upper Saranac Lake

TEXT BY DAN SHAW
PHOTOGRAPHY BY PIETER ESTERSOHN
PRODUCED BY HOWARD CHRISTIAN

The boathouse of a family's upstate New York getaway, called Big Rock, is accented with traditional Adirondack twigwork. The compound's buildings were designed by Shope Reno Wharton, and Thom Filicia decorated the interiors. For details see Sources.

73

Pieter Estersohn

www.art-dept.com

Art Department



Pieter Estersohn

www.art-dept.com

Art Department



Pieter Estersohn

www.art-dept.com

Art Department



Pieter Estersohn

www.art-dept.com

Art Department



Pieter Estersohn

www.art-dept.com

Art Department



Pieter Estersohn

www.art-dept.com

Art Department



Pieter Estersohn

www.art-dept.com

Art Department



Pieter Estersohn

www.art-dept.com

Art Department



Pieter Estersohn

www.art-dept.com

Art Department



Pieter Estersohn

www.art-dept.com

Art Department



Pieter Estersohn

www.art-dept.com

Art Department



Designers Jesse Carrier and Mara Miller of the Manhattan firm Carrier and Co. Interiors outfitted Susan and Gary Garabrant's Southampton, New York, home, which was built by John David Rose Architect. In the living room, a 1950 Perle Fine painting is mounted between French doors curtained with a Carolina Irving linen. Twin sofas, custom made by Luther Quintana and covered in a Chapas Textiles fabric, face a Karl Springer cocktail table (left) and a pair of antique Spanish low tables; the rug is by Patterson Flynn Martin. For details see Sources.

LOCAL COLOR

At an effortlessly chic Hamptons retreat decorated by Carrier and Co., lively regional artifacts, artwork, and furnishings take pride of place

TEXT BY RAUL BARRENECHE PHOTOGRAPHY BY PIETER ESTERSON PRODUCED BY HOWARD CHRISTIAN

163

Pieter Estersohn

www.art-dept.com

Art Department



Pieter Estersohn

www.art-dept.com

Art Department



Pieter Estersohn

www.art-dept.com

Art Department



Pieter Estersohn

www.art-dept.com

Art Department



Pieter Estersohn

www.art-dept.com

Art Department



Pieter Estersohn

www.art-dept.com

Art Department



Pieter Estersohn

www.art-dept.com

Art Department



Pieter Estersohn

www.art-dept.com

Art Department



Pieter Estersohn

www.art-dept.com

Art Department



Pieter Estersohn

www.art-dept.com

Art Department



Pieter Estersohn

www.art-dept.com

Art Department



Pieter Estersohn

www.art-dept.com

Art Department



Pieter Estersohn

www.art-dept.com

Art Department



Pieter Estersohn

www.art-dept.com

Art Department



Pieter Estersohn

www.art-dept.com

Art Department



Pieter Estersohn

www.art-dept.com

Art Department



Pieter Estersohn

www.art-dept.com

Art Department



Pieter Estersohn

www.art-dept.com

Art Department



Pieter Estersohn

www.art-dept.com

Art Department



Pieter Estersohn

www.art-dept.com

Art Department



Pieter Estersohn

www.art-dept.com

Art Department



Pieter Estersohn

www.art-dept.com

Art Department



Pieter Estersohn

www.art-dept.com

Art Department



Pieter Estersohn

www.art-dept.com

Art Department



Pieter Estersohn

www.art-dept.com

Art Department

Light + Lively

Featuring exotic trompe l'oeil, tropical art,
and a sprightly palette, Nancy and Bill Morton's historic
Florida home is a Gulf Coast paradise

TEXT BY ROBERT JANJIGIAN PHOTOGRAPHY BY PIETER ESTERSOHN PRODUCED BY HOWARD CHRISTIAN



Above: The Boca Grande, Florida, residence of decorator Nancy Morton and her husband, Bill, was designed in 1940 by architect F. Burrall Hoffman Jr. **Opposite:** A plunge pool centers the front courtyard; the ceramic tiles and travertine pavers are by Country Floors. For details see Sources.

Art Department



Pieter Estersohn

www.art-dept.com

Art Department



Pieter Estersohn

www.art-dept.com

Art Department



Pieter Estersohn

www.art-dept.com

Art Department



Pieter Estersohn

www.art-dept.com

Art Department



Pieter Estersohn

www.art-dept.com

Art Department



Pieter Estersohn

www.art-dept.com

Art Department



Pieter Estersohn

www.art-dept.com

Art Department



Palm Beach Story

DESIGNER DAVID EASTON WRITES
THE NEXT CHAPTER FOR A DILAPIDATED
1920s OCEANFRONT MANSION,
GIVING THE FLORIDA LANDMARK A
GLORIOUS NEW LEASE ON LIFE

TEXT BY CHRISTOPHER MASON
PHOTOGRAPHY BY PIETER ESTERSON
PRODUCED BY HOWARD CHRISTIAN

198

Pieter Estersohn

www.art-dept.com

Art Department



Pieter Estersohn

www.art-dept.com

Art Department



Pieter Estersohn

www.art-dept.com

Art Department



Pieter Estersohn

www.art-dept.com

Art Department



Pieter Estersohn

www.art-dept.com

Art Department



Pieter Estersohn

www.art-dept.com

Art Department



Pieter Estersohn

www.art-dept.com

Art Department



Pieter Estersohn

www.art-dept.com

Art Department



Pieter Estersohn

www.art-dept.com

Art Department



Pieter Estersohn

www.art-dept.com

Art Department



Pieter Estersohn

www.art-dept.com

Art Department



Pieter Estersohn

www.art-dept.com

Art Department



Pieter Estersohn

www.art-dept.com

Art Department



Pieter Estersohn

www.art-dept.com

Art Department



Pieter Estersohn

www.art-dept.com

Art Department



Pieter Estersohn

www.art-dept.com

Art Department



Pieter Estersohn

www.art-dept.com

Art Department



Pieter Estersohn

www.art-dept.com

Art Department



Pieter Estersohn

www.art-dept.com

Art Department



Pieter Estersohn

www.art-dept.com

Art Department



Pieter Estersohn

www.art-dept.com

Art Department



Pieter Estersohn

www.art-dept.com

Art Department



Pieter Estersohn

www.art-dept.com

Art Department



Pieter Estersohn

www.art-dept.com

Art Department



Pieter Estersohn

www.art-dept.com

Art Department



Pieter Estersohn

www.art-dept.com

Art Department



Pieter Estersohn

www.art-dept.com

Art Department



Nashville philanthropists and photography collectors Jennifer and Billy Frist break with tradition in a soaring, sun-drenched contemporary dwelling designed with family and entertaining in mind

TEXT BY MITCHELL OWENS
PHOTOGRAPHY BY PIETER ESTERSON
PRODUCED BY HOWARD CHRISTIAN

Left: A floral light sculpture by U-Ram Choe glimmers in the living room of Jennifer and Billy Frist's Tennessee house, which was renovated by the architecture firm DAJAD and decorated by McAlpine Booth & Ferrier Interiors. At far left, the curtains are of a Great Plains fabric, and a tree trunk-like cocktail table by Chista stands near a vintage Tommi Parzinger armchair from Duane Modern. The William Haines Designs slipper chairs are upholstered in a faux shearling by Larsen, and the Christophe Delcourt settees are from Ralph Pucci International; the low credenza at right is by BODW. For details see Sources.

75

Pieter Estersohn

www.art-dept.com

Art Department



Pieter Estersohn

www.art-dept.com

Art Department



Pieter Estersohn

www.art-dept.com

Art Department



Pieter Estersohn

www.art-dept.com

Art Department



Pieter Estersohn

www.art-dept.com

Art Department



Pieter Estersohn

www.art-dept.com

Art Department



Pieter Estersohn

www.art-dept.com

Art Department



Breaking the Mold

Designer Vicente Wolf creates striking juxtapositions of contemporary art and eclectic furnishings in a classic prewar apartment in Manhattan

TEXT BY JULIE L. BELCOVE
PHOTOGRAPHY BY PIETER ESTERSON
PRODUCED BY HOWARD CHRISTIAN

Sunlight floods an art-collecting couple's New York City apartment, designed by Vicente Wolf. In the living room, a Barnaby Furnas canvas is installed over the mantel, with an Andy Warhol "Flowers" painting and a Tom Friedman cereal-box sculpture nearby. Tom Otterness bronze figures are displayed on the windowsills. An 18th-century Italian chandelier is suspended above a Saarinen table by Knoll, and the skirted chairs pulled up to the Steinway piano are upholstered in a Manuel Canovas cotton. For details see Sources.

Pieter Estersohn

www.art-dept.com

Art Department



Pieter Estersohn

www.art-dept.com

Art Department



Pieter Estersohn

www.art-dept.com

Art Department



Pieter Estersohn

www.art-dept.com

Art Department



Pieter Estersohn

www.art-dept.com

Art Department



Pieter Estersohn

www.art-dept.com

Art Department



Aerin's World

TEXT BY BRAD GOLDFARB PHOTOGRAPHY BY PIETER ESTERSOHN PRODUCED BY PARKER BOWIE LARSON AND MICHAEL REYNOLDS

Pieter Estersohn

www.art-dept.com

Art Department



Pieter Estersohn

www.art-dept.com

Art Department



Pieter Estersohn

www.art-dept.com

Art Department



Pieter Estersohn

www.art-dept.com

Art Department



Pieter Estersohn

www.art-dept.com

Art Department



Pieter Estersohn

www.art-dept.com