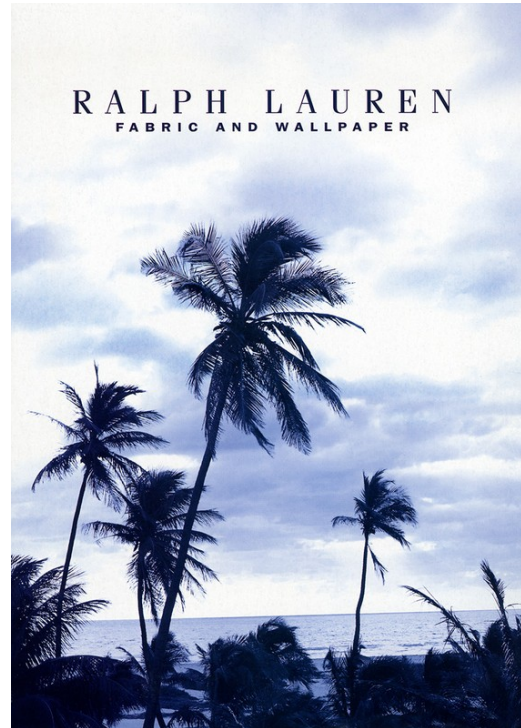
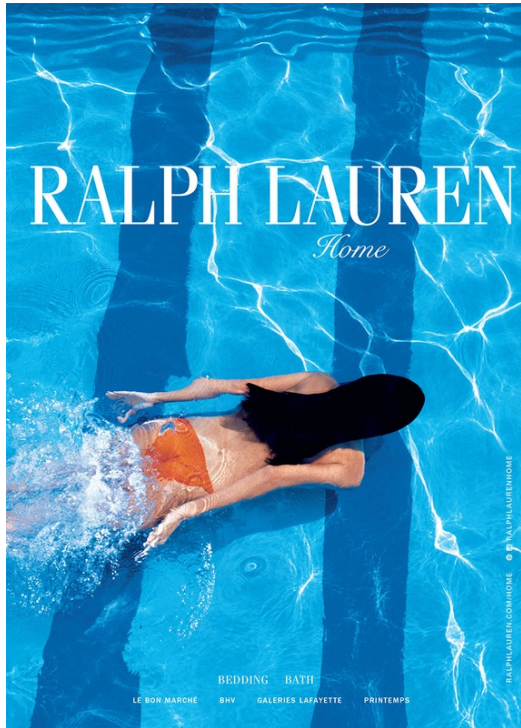


Art Department



Pieter Estersohn

www.art-dept.com

Art Department



Pieter Estersohn

Art Department



Pieter Estersohn

www.art-dept.com

Art Department



Pieter Estersohn

www.art-dept.com

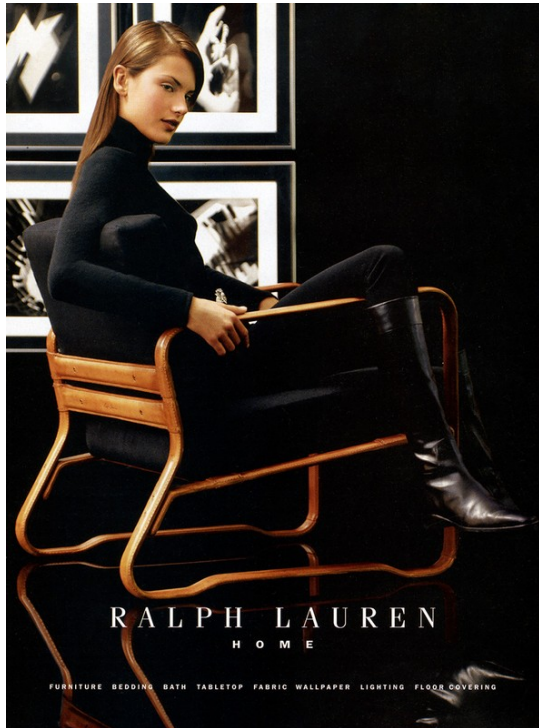
Art Department



Pieter Estersohn

www.art-dept.com

Art Department



Pieter Estersohn

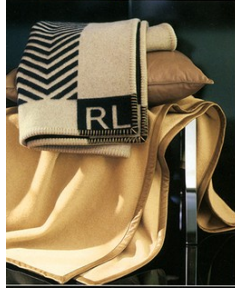
www.art-dept.com

Art Department



In the bedroom, a reflection of personal comfort, fabrics are chosen with a penchant for contrast. From exquisite cashmere to supple leather, Albertus Steinhilber brings a structured, grid pattern to solid textures. Embracing a symmetrical design sensibility, the Impassio Black Leather Collection Bed is channel-quilted in horizontal lines.

Below, the fluid silhouettes of the Collection Lounge Chair, as seen on the cover, illustrates a desire for function and beauty.



Above, the Hansford benchwood and Montecito Alpaca-mohair throw blankets offer luxurious simplicity with a graphic, signature statement.

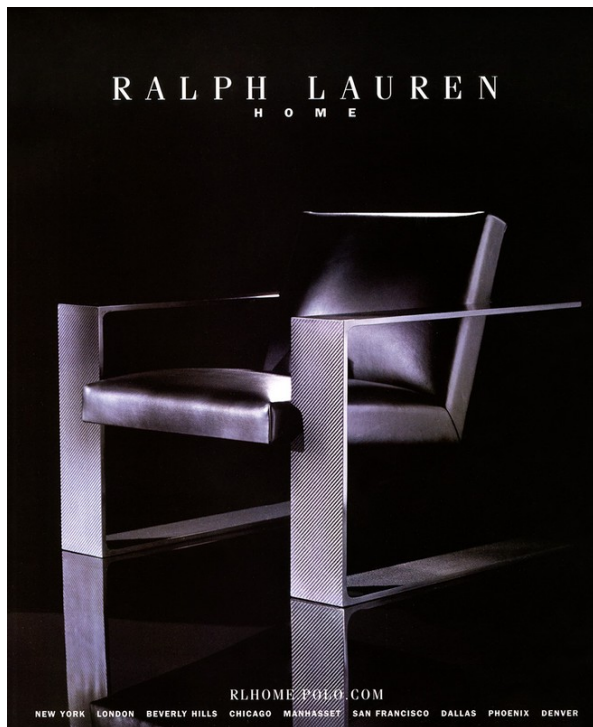


RALPH LAUREN
HOME

Pieter Estersohn

www.art-dept.com

Art Department



Pieter Estersohn

www.art-dept.com

Art Department



Pieter Estersohn

www.art-dept.com

Art Department



22



Glamorous fabrications create a sophisticated mix of inviting pillows and bed dressing. The satin, tulip motif of the Beatty Throw Pillow provides a soft contrast to the shimmering, woven metal of the Boardman Lamé Sham.

Pieter Estersohn

www.art-dept.com

Art Department



SCANDINAVIAN GLASS

Apple vase by Ingelborg Lundin and Ekellin bud vase, both from Clearly First. Facing page, clock-wise from far left: Baltic green vase by Iittala. Filigree vase by Rosendahl. Iittala's Karlo grey pitcher. Blue bowl by Scandinavia Form. Acid blue bowl by Kosta Boda. Scandinavia Form's Odon blue candleholder. Swedish glass by Orrefors. Tumbler from White on White. Iittala's Essence pink saucer. Brandy glass from White on White. Kosta Boda's Fiji blue bottle. Scandinavia Form's Odon green candleholder. Slovic's Rings vase by Crefors. Kosta Boda's Mine green tumbler. See Resources.



Facing page: Catherine Memm's cucumber glycerin soaps. This page, from top: Clear glass container from Perny's Sun Side a Bam. Violette eau de toilette spray and Mock Viny comb, both by Penthagon's London. Catherine Memm's apperment glycerin soap. Blu Mediterraneo orange-scented water by Acqua di Parma. Surface of Hacia's Marine acrylic shearing. See Resources.

Pieter Estersohn

www.art-dept.com

Art Department



MAN'S BEST FRIEND

or it's a dog's life

Staring into the eyes of his friends and family, Beau remembers his trips to the country and days spent touring in the back of the convertible. The Ralph Lauren frame collection in sterling silver and silver plate with chic leather trim graces his photo gallery perfectly.

20

Please see page 39 for details on items shown. 21

Pieter Estersohn

www.art-dept.com

Art Department



This page: Father and son, a regal reflection in the Westerton Mirror. Facing page: The sleek lines of the geometric Luxe Console carries the essentials, the polished silver and ebony finish of the Fluted Table Lamp for illumination and the welcome home martini in a crystal Bryant Glass with two tempting olives.

24



Facing page: A sip for the puppy. Whiskers on silver. The Polo Bear Cup tempted this Delmatian puppy. This page: After a long drink offer your dog a specially baked signature Ralph Lauren dog biscuit, framed here by an Academy Platinum Plate and black stitched leather Rollins Charger. The perfect snack for man's best friend.

25



**RALPH LAUREN
PAINT**

TECHNIQUES
DENIM • CHAMBRAY • LINEN
ANTIQUED LEATHER



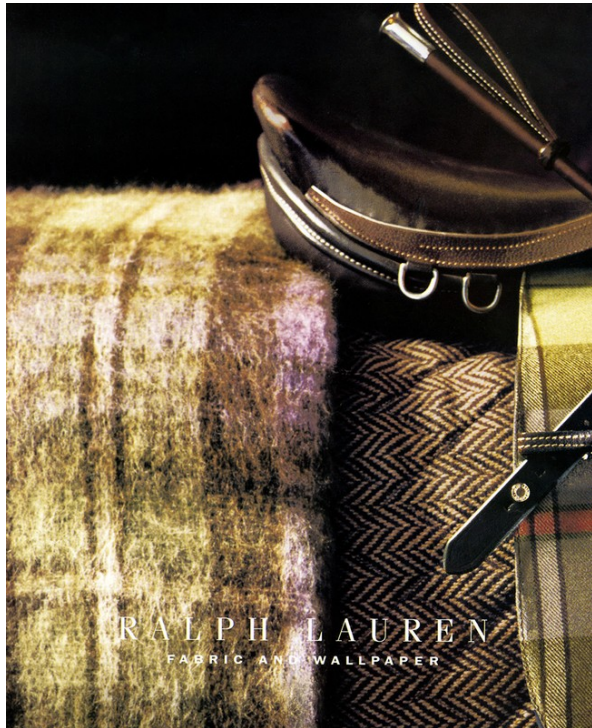
**RALPH LAUREN
PAINT**

SUEDE

Pieter Estersohn

www.art-dept.com

Art Department



Pieter Estersohn

www.art-dept.com

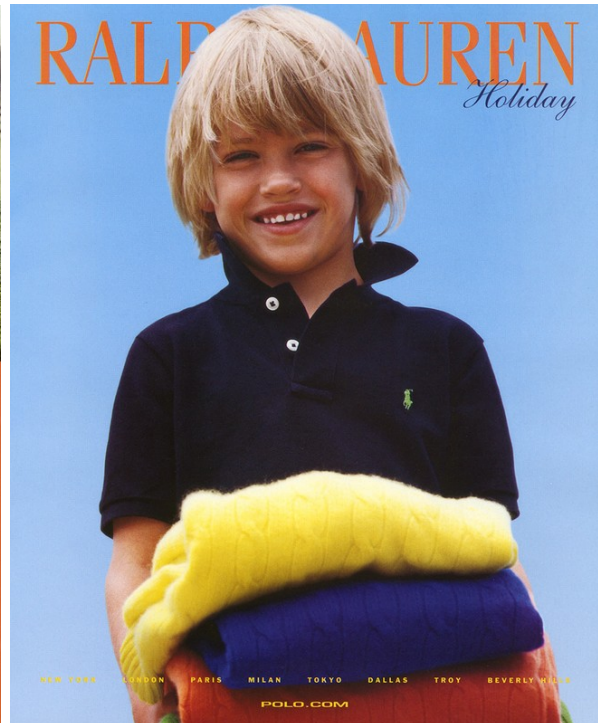
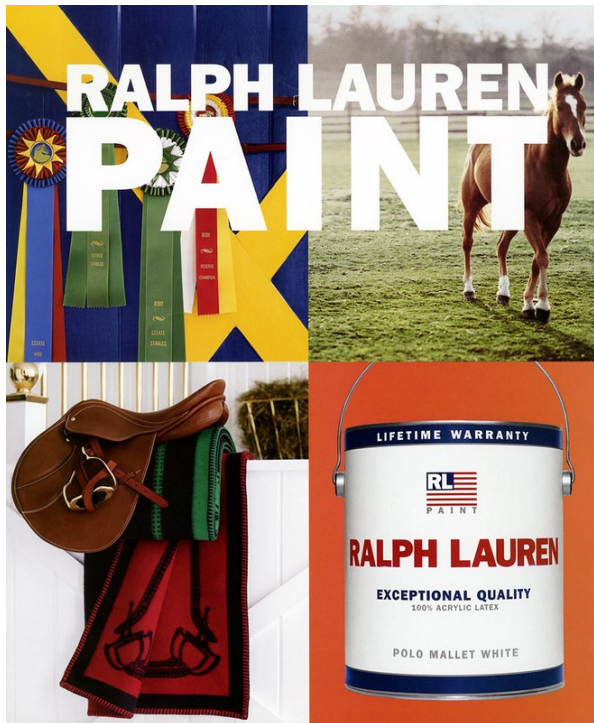
Art Department



Pieter Estersohn

www.art-dept.com

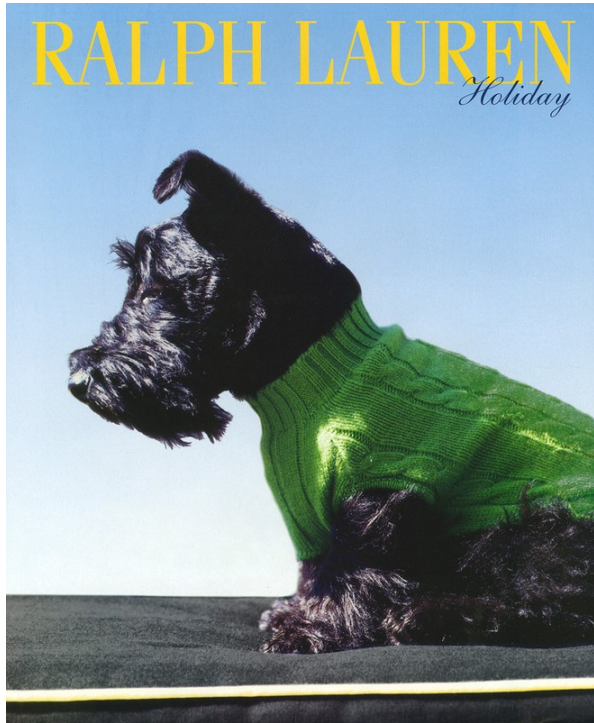
Art Department



Pieter Estersohn

www.art-dept.com

Art Department



Pieter Estersohn

www.art-dept.com

Art Department



Pieter Estersohn

www.art-dept.com

Art Department



From top: Classic linen European sheets, Margot Stone linen pillow, Sherry Attwood pillowcase, Megan Rippee bed skirt, two Sherry Attwood bed pillows, Heidi Kerner, Perpetua bed skirt, three and quilted linen bed skirt, and quilted linen bed skirt, all from Ralph Lauren Home & Interiors. Bed collection. Blue panel bed by Restoration Hardware. See Resources.



Shaving-silver shaving-soap bowl and brush by Elio Peretti for Tiffany & Co. Facing page, from top: Cassini NY 13 lamp, striped toothbrush by Waterworks. Armani Casa in Rome presentation photo. Barbed landscape-wood box by Ralph Lauren Home. First-Aid toothbrush storage box from the Sereno in Cassini Shop. Polo Ralph Lauren's Blue soap on a rope. Seven de Marade's soap from Apartment 48. Surface of Mazzo's Passion Pink acrylic sheeting. See Resources.



Pieter Estersohn

www.art-dept.com

Art Department



Pieter Estersohn

www.art-dept.com

Art Department



Pieter Estersohn

www.art-dept.com

Art Department



Pieter Estersohn

www.art-dept.com