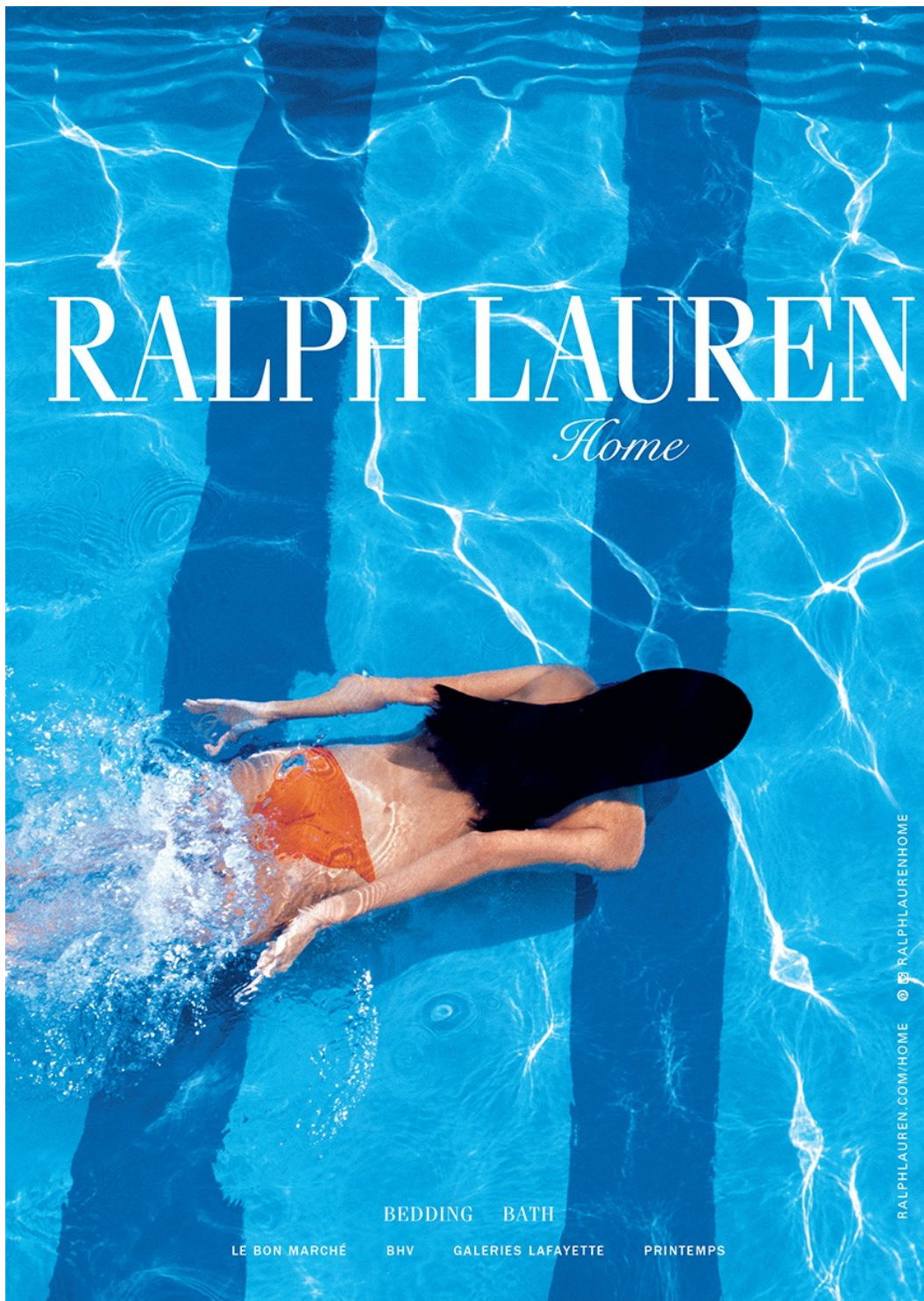


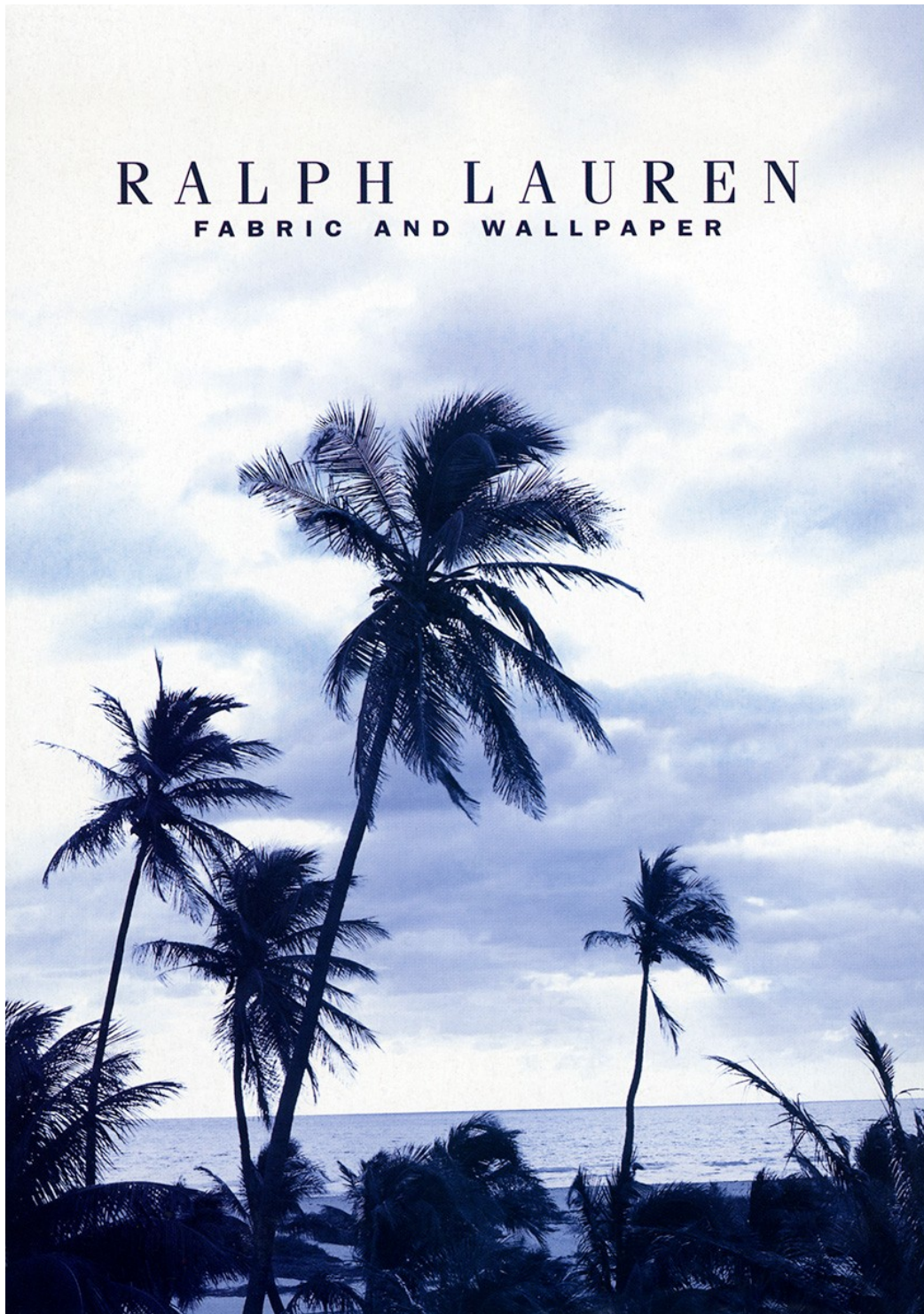
# Art Department



Pieter Estersohn

[www.art-dept.com](http://www.art-dept.com)

# Art Department



Pieter Estersohn

[www.art-dept.com](http://www.art-dept.com)

# Art Department



Pieter Estersohn

[www.art-dept.com](http://www.art-dept.com)

# Art Department



Pieter Estersohn

[www.art-dept.com](http://www.art-dept.com)

# Art Department



Pieter Estersohn

[www.art-dept.com](http://www.art-dept.com)

# Art Department



Pieter Estersohn

[www.art-dept.com](http://www.art-dept.com)

# Art Department



FURNITURE BEDDING BATH TABLETOP FABRIC WALLPAPER LIGHTING FLOOR COVERING

## Pieter Estersohn

[www.art-dept.com](http://www.art-dept.com)

# Art Department



Pieter Estersohn

[www.art-dept.com](http://www.art-dept.com)

# Art Department

This page, refreshing coolness as delivered by the contoured grace of Masterson Crystal. Facing page, seek repose in the plush elegance of the Solid Marine Raffia and Vacance Ocean Linen with Navy Stripe Throw Pillows. The fresh modernism of table design with a classic basketweave in simple white leather against the sparkle of clean, polished chrome.



Pieter Estersohn

[www.art-dept.com](http://www.art-dept.com)

# Art Department



Pieter Estersohn

[www.art-dept.com](http://www.art-dept.com)

# Art Department



On brushes: Anchor Blue (BB4), Whisper White (WM133), Verdian Red (TH49), Wall Whisper White (WM133). This page: Sandown Blue (BB7) over Whisper White (WM133). Call 800-379-POLY for more information.

## Pieter Estersohn

[www.art-dept.com](http://www.art-dept.com)


# Art Department



Pieter Estersohn

[www.art-dept.com](http://www.art-dept.com)

# Art Department



RALPH LAUREN  
PAINT

EXPERIENCE THE PERFECT WHITE

FOR A COMPLETE STORE LISTING OR MORE INFORMATION, PLEASE CALL 800.379.JDLO

AVAILABLE AT THE FINEST SPECIALTY PAINT STORES  
RALPHLAURENPAIN.COM

Pieter Estersohn

[www.art-dept.com](http://www.art-dept.com)

# Art Department

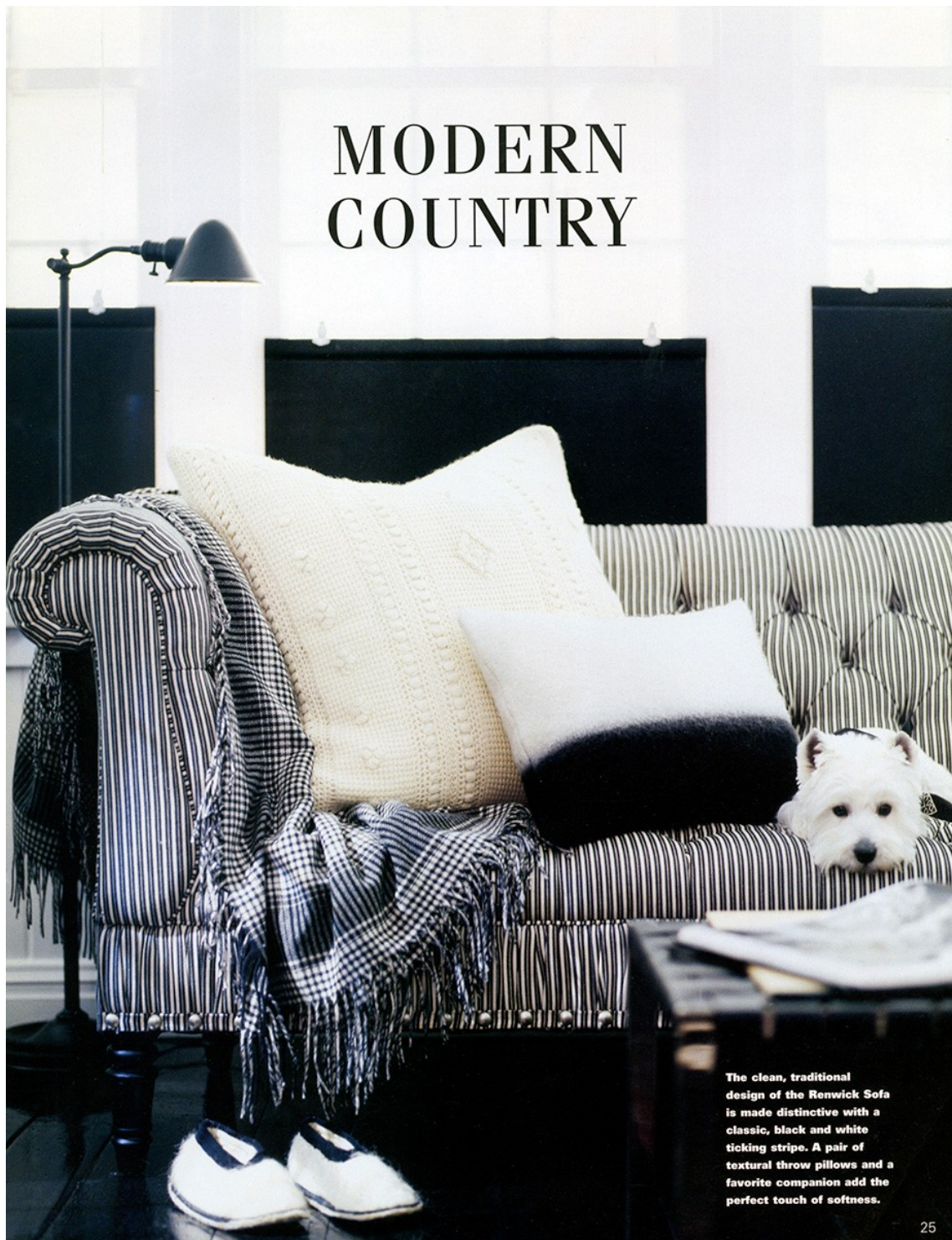


RALPH LAUREN PURPLE LABEL PRESENTS  
THE OLD WORLD ELEGANCE AND MASCULINE LUXURY  
OF CLASSIC BROWN AND WHITE DRESSING

Pieter Estersohn

[www.art-dept.com](http://www.art-dept.com)

# Art Department



## MODERN COUNTRY

The clean, traditional design of the Renwick Sofa is made distinctive with a classic, black and white ticking stripe. A pair of textural throw pillows and a favorite companion add the perfect touch of softness.

25

## Pieter Estersohn

[www.art-dept.com](http://www.art-dept.com)

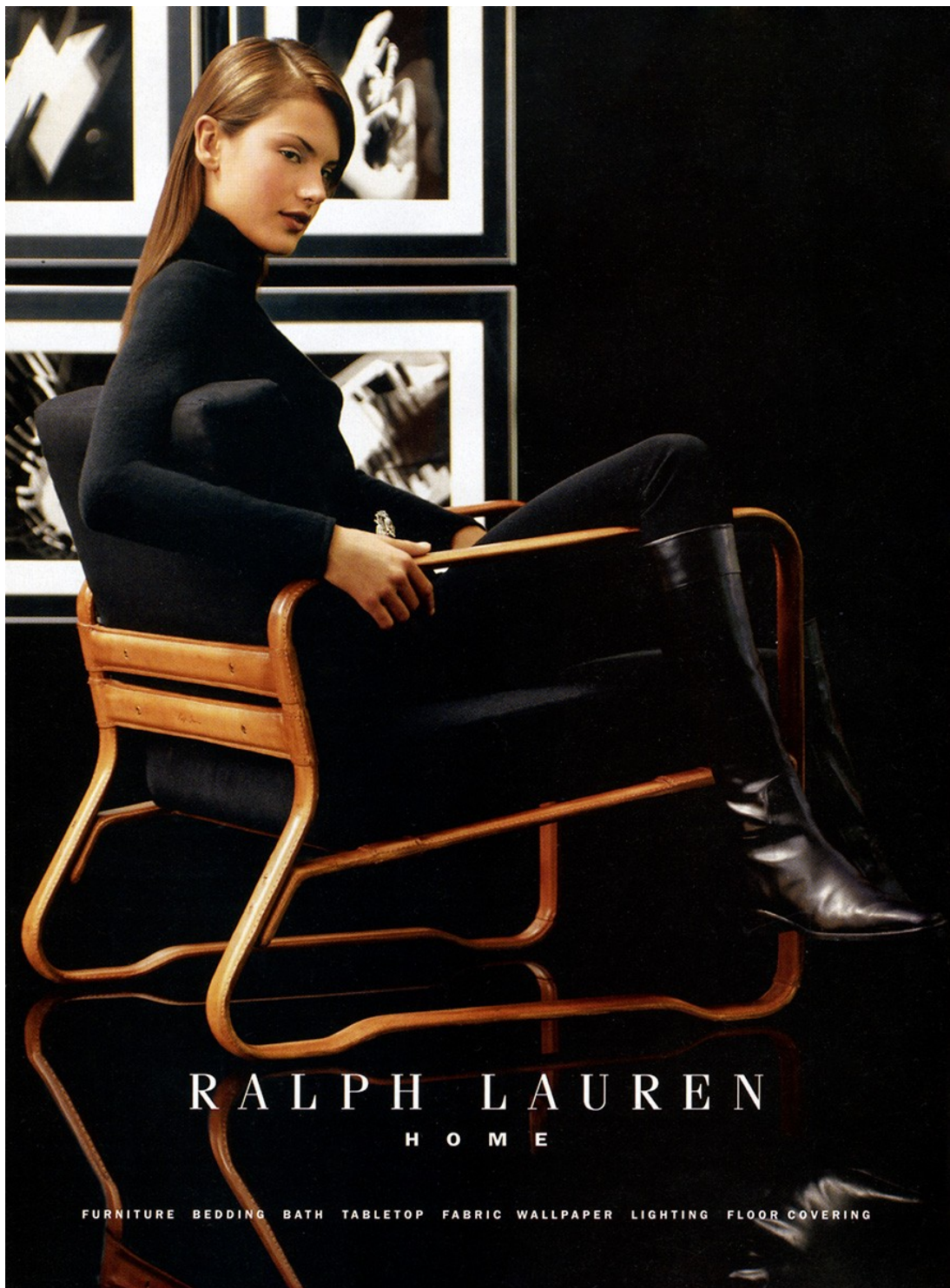
# Art Department



Pieter Estersohn

[www.art-dept.com](http://www.art-dept.com)

# Art Department



Pieter Estersohn

[www.art-dept.com](http://www.art-dept.com)

# Art Department



Pieter Estersohn

[www.art-dept.com](http://www.art-dept.com)

# Art Department



Pieter Estersohn

[www.art-dept.com](http://www.art-dept.com)

# Art Department



A MODERN RETREAT  
THAT COMBINES  
RACECARS, MOTORCYCLES  
AND UNEXPECTED CALM.

Leather-wrapped steel  
furnishings evoke a  
mid-twentieth-century  
aesthetic for function-  
oriented design.

Pieter Estersohn

[www.art-dept.com](http://www.art-dept.com)

# Art Department



In the bedroom, a reflection of personal comfort. Fabrics are chosen with a penchant for contrast, from exquisite cashmere to supple leather.

Atherton Sheeting brings a structured, grid pattern to solid textures. Echoing a symmetrical design sensibility, the imposing, black leather Collection Bed is channel-quilted in horizontal lines.

Below, the fluid silhouette of the Collection Lounge Chair, as seen on the cover, illustrates a desire for function and beauty.



Above, the Haverford lambswool and Hunterdon Alpaca-mohair Throw Blankets offer luxurious simplicity with a graphic, signature statement.



## Pieter Estersohn

# Art Department



Pieter Estersohn

[www.art-dept.com](http://www.art-dept.com)

# Art Department



12

Pieter Estersohn

[www.art-dept.com](http://www.art-dept.com)

# Art Department



Pieter Estersohn

[www.art-dept.com](http://www.art-dept.com)

# Art Department

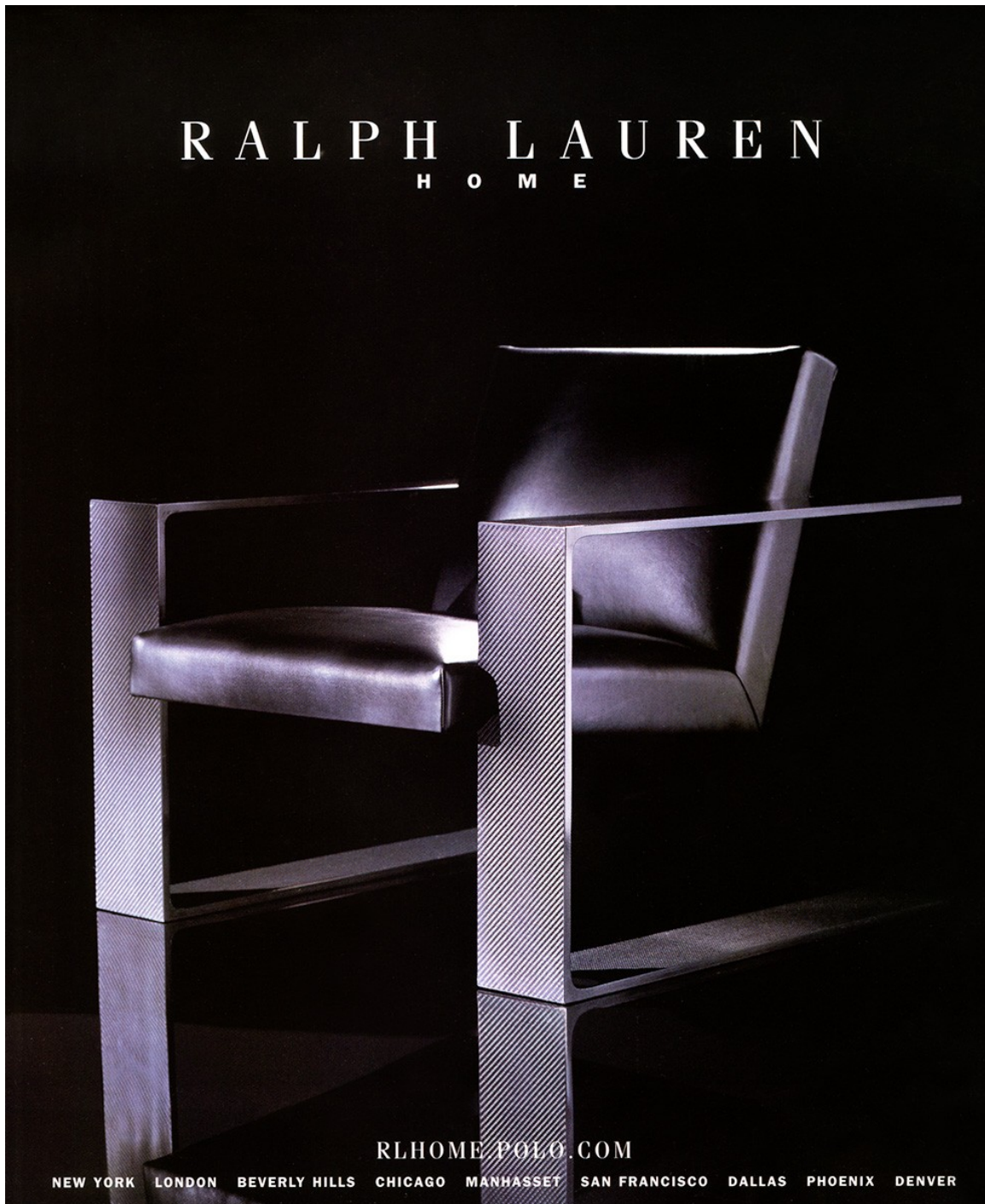


FURNITURE BEDDING AND BATH TABLETOP FABRIC AND WALLPAPER LIGHTING FLOOR COVERING

## Pieter Estersohn

[www.art-dept.com](http://www.art-dept.com)

# Art Department



Pieter Estersohn

[www.art-dept.com](http://www.art-dept.com)

# Art Department

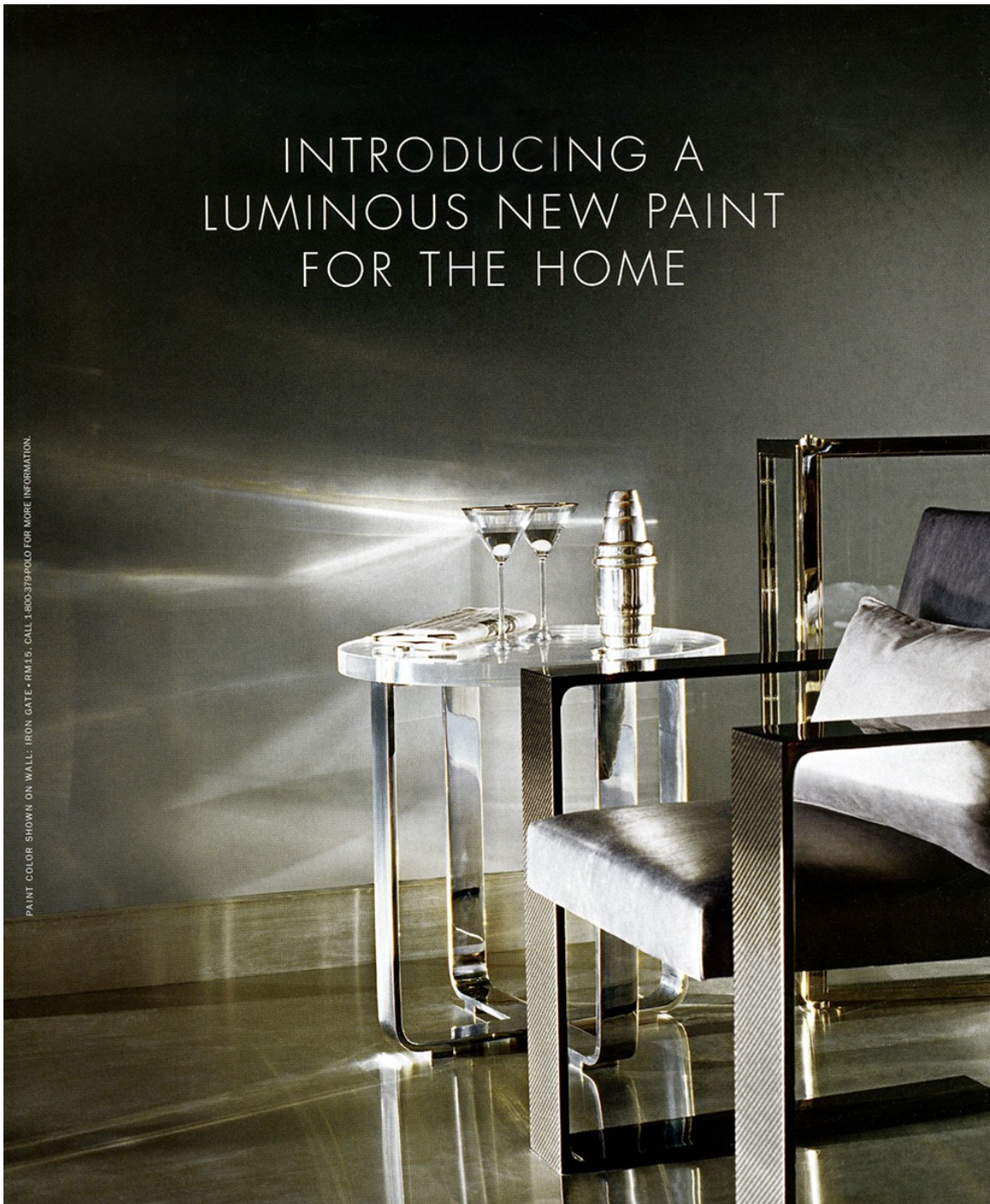


Pieter Estersohn

[www.art-dept.com](http://www.art-dept.com)

# Art Department

INTRODUCING A  
LUMINOUS NEW PAINT  
FOR THE HOME



PAINT COLOR SHOWN ON WALL: IRON GATE - RM15. CALL 1-800-379-POLO FOR MORE INFORMATION.

Pieter Estersohn

[www.art-dept.com](http://www.art-dept.com)

# Art Department



Pieter Estersohn

[www.art-dept.com](http://www.art-dept.com)

# Art Department



Pieter Estersohn

[www.art-dept.com](http://www.art-dept.com)

# Art Department



Visual and textural bedding adds extra dimensions to this Victorian bed. Chunky wool knits and fine, crochet-edged pillows rest beautifully against crisp Jenna Sheets.

31

## Pieter Estersohn

[www.art-dept.com](http://www.art-dept.com)

# Art Department



22

Pieter Estersohn

[www.art-dept.com](http://www.art-dept.com)

# Art Department



Pieter Estersohn

[www.art-dept.com](http://www.art-dept.com)

# Art Department



**G**lamorous fabrications create a sophisticated mix of inviting pillows and bed dressing. The satin, tulip motif of the Beatty Throw Pillow provides a soft contrast to the shimmering, woven metal of the Boardman Lamé Sham.

## Pieter Estersohn

[www.art-dept.com](http://www.art-dept.com)

# Art Department



Pieter Estersohn

[www.art-dept.com](http://www.art-dept.com)

# Art Department



Pieter Estersohn

[www.art-dept.com](http://www.art-dept.com)

# Art Department

## SCANDINAVIAN GLASS

Apple vase by Ingeborg Lundin and Ekollon bud vase, both from Clearly First. Facing page, clockwise from far left: Ballo green votive by Iittala. Filigran votive by Rosendahl. Iittala's Kartio gray pitcher. Blue bowl by Scandinavia Form. Atoll blue bowl by Kosta Boda. Scandinavia Form's Odon blue candleholder. Slowfox glass by Orrefors. Tumbler from White on White. Iittala's Essence pink carafe. Brandy glass from White on White. Kosta Boda's Fidji blue bottle. Scandinavia Form's Odon green candleholder. Slowfox Rings vase by Orrefors. Kosta Boda's Mine green tumbler. See Resources.



Pieter Estersohn

[www.art-dept.com](http://www.art-dept.com)

# Art Department



Facing page: Catherine Memmi's cucumber glycerin soaps. This page, from top: Claro glass canister from Pottery Barn Bed + Bath. Violette eau de toilette spray and Mock Ivory comb, both by Penhaligon's London. Catherine Memmi's peppermint glycerin soap. Blu Mediterraneo orange-scented water by Acqua di Parma. Surface of Haziza's Marine acrylic sheeting. See Resources.

## Pieter Estersohn

[www.art-dept.com](http://www.art-dept.com)

# Art Department



Pieter Estersohn

[www.art-dept.com](http://www.art-dept.com)

# Art Department

MAN'S BEST FRIEND

or it's a dog's life

Staring into the eyes of his friends and family, Beau remembers his trips to the country and days spent touring in the back of the convertible. The Ralph Lauren frame collection in sterling silver and silver plate with chic leather trim graces his photo gallery perfectly.

20

Please see page 39 for details on items shown. 21

Pieter Estersohn

[www.art-dept.com](http://www.art-dept.com)

# Art Department



This page: Father and son, a regal reflection in the Westerton Mirror. Facing page: The sleek lines of the geometric Luxe Console carries the essentials, the polished silver and ebony finish of the Fluted Table Lamp for illumination and the welcome home martini in a crystal Bryant Glass with two tempting olives.

24

## Pieter Estersohn

[www.art-dept.com](http://www.art-dept.com)

# Art Department

Facing page: A sip for the puppy. Whiskers on silver. The Polo Bear Cup tempted this Dalmatian puppy. This page: After a long drink offer your dog a specially baked signature Ralph Lauren dog biscuit, framed here by an Academy Platinum Plate and black stitched leather Rollins Charger. The perfect snack for man's best friend.



Pieter Estersohn

[www.art-dept.com](http://www.art-dept.com)

# Art Department



Pieter Estersohn

[www.art-dept.com](http://www.art-dept.com)

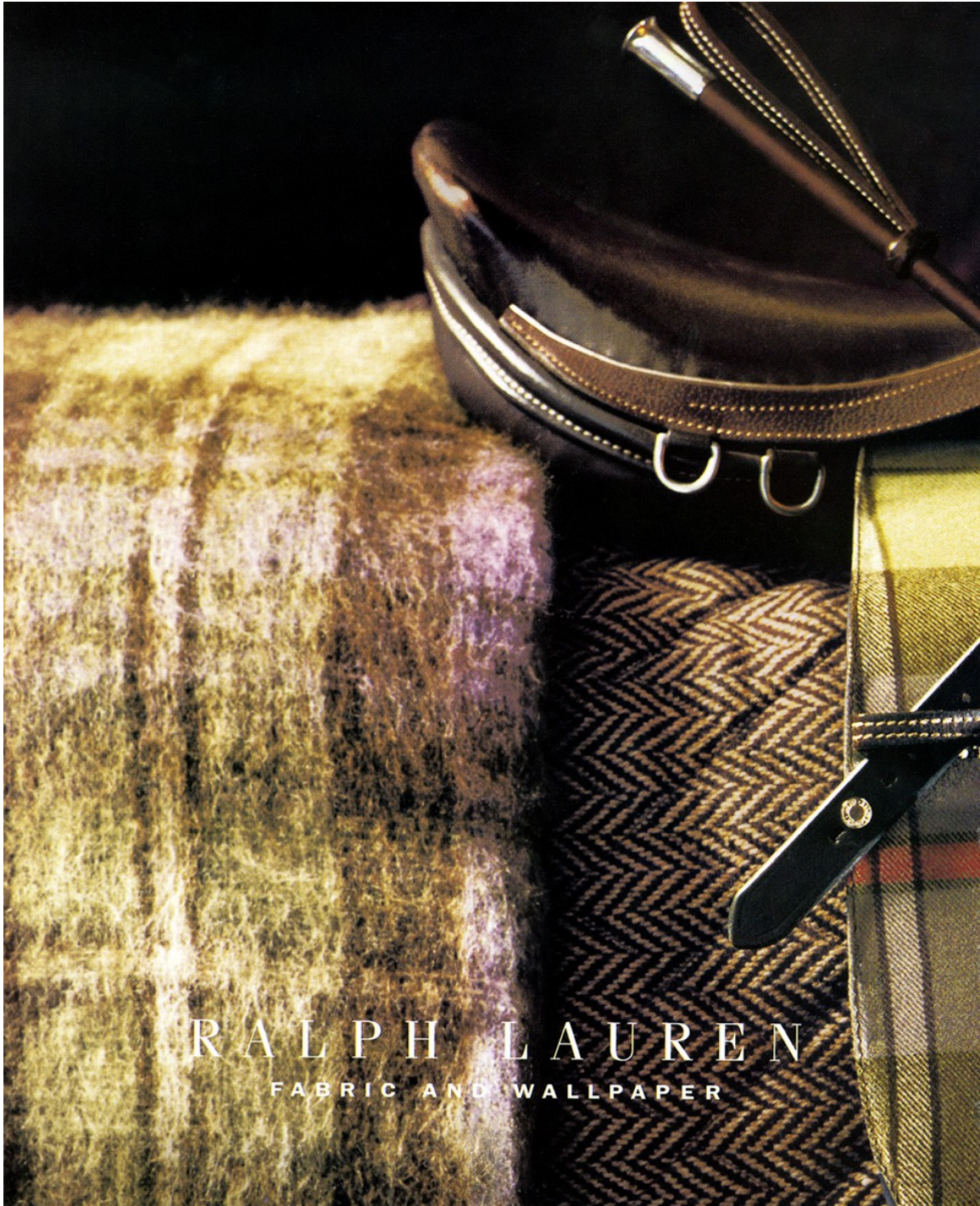
# Art Department



Pieter Estersohn

[www.art-dept.com](http://www.art-dept.com)

# Art Department



Pieter Estersohn

[www.art-dept.com](http://www.art-dept.com)

# Art Department

## ASIAN ACCENTS

Akari washi-paper light sculpture by Isamu Noguchi. Facing page, clockwise from left: Takashimaya New York's red-lacquer tray. Iron teapot from Sara. Furoshiki cotton wrapping and two-drawer cherry-bark chest, both from Dandelion. Tea Ceremony ceramic bowl and bamboo whisk from Asia Store. Takashimaya New York's Green Leaf glazed ceramic dish. Stream iron plate from Asia Store. George Nakashima's Conoid walnut cocktail table. Shoji wood-and-laminated-rice-paper screens and Uajiki reed mat by Miya Shoji & Interiors. See Resources.



Pieter Estersohn

[www.art-dept.com](http://www.art-dept.com)

# Art Department



Pieter Estersohn

[www.art-dept.com](http://www.art-dept.com)

# Art Department



The Chinoiserie bedroom—the ultimate retreat—is an extraordinary display of fabric and color. A spectacular, four-poster, carved-mahogany bed embellished with a canary yellow alligator headboard and draped in red silk anchors the room. The Harrogate jacquard fretwork and Candia Sheeting create a natural foundation for the floral-embroidered Formosa Nightspread and the sateen Ginger Peach Duvet Cover and Shams. The cloud-embroidered Daybreak European Shams reveal an inspiration of delicate, antique kimonos and the soft gentility these pieces evoke. An inspired, finishing touch, the Butterfly Throw Pillow in beautiful, embroidered silk.

## Pieter Estersohn

[www.art-dept.com](http://www.art-dept.com)

# Art Department



Pieter Estersohn

[www.art-dept.com](http://www.art-dept.com)

# Art Department



Pieter Estersohn

[www.art-dept.com](http://www.art-dept.com)

# Art Department

This page, a striking, red leather charger becomes the perfect foil for the delicate cobalt detailing and flair of the Academy Gold and Empire place setting. The Navy Hemstitch Linen Napkin forms a delicate balance of texture and fabric. Facing page, a stately Georgian chest-on-chest crafted from lustrous mahogany with unique crocodile drawer fronts and elaborate, chased hardware inspires thought of an ancestral piece.



Pieter Estersohn

[www.art-dept.com](http://www.art-dept.com)

# Art Department



Pieter Estersohn

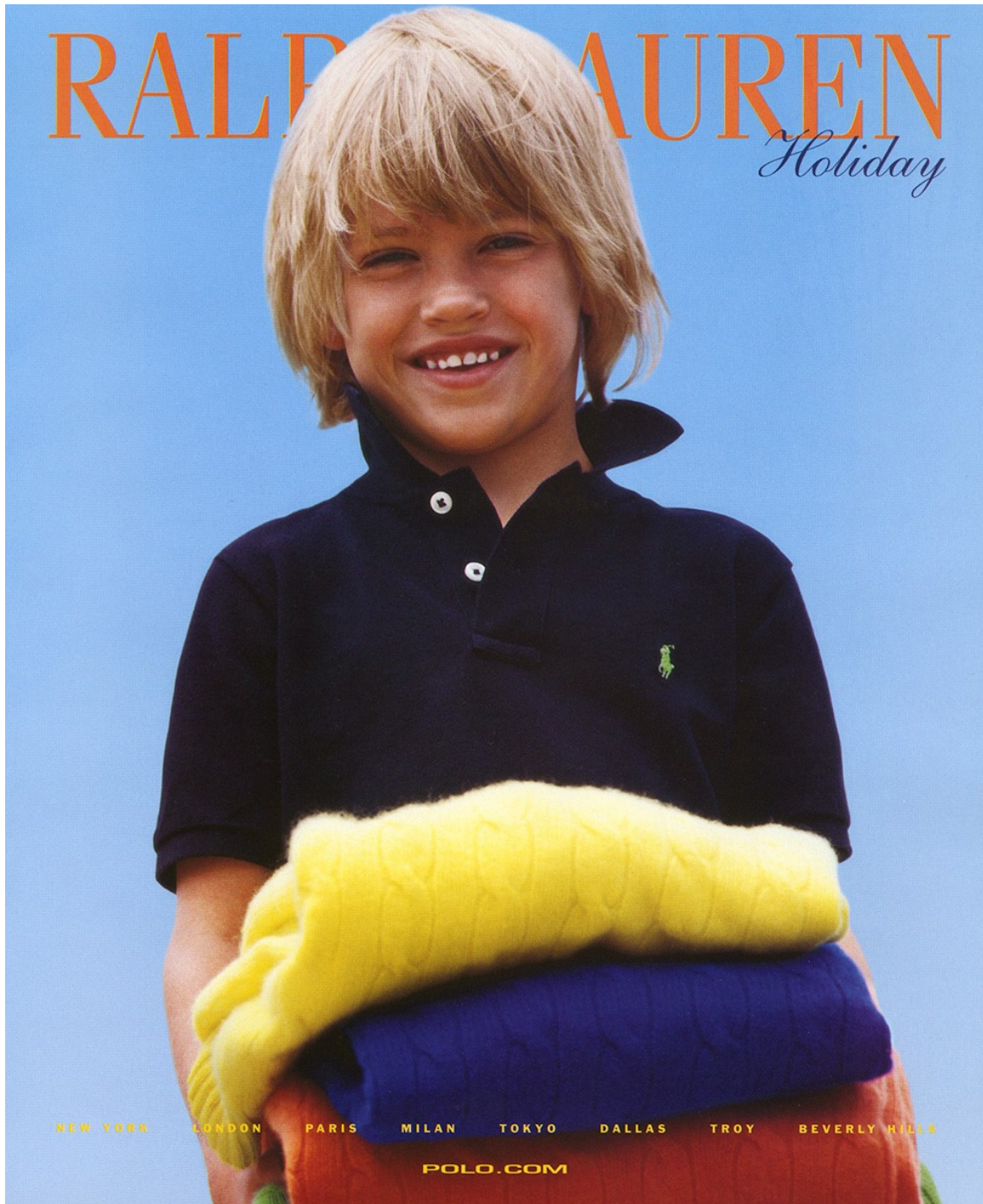
[www.art-dept.com](http://www.art-dept.com)

# Art Department



Pieter Estersohn

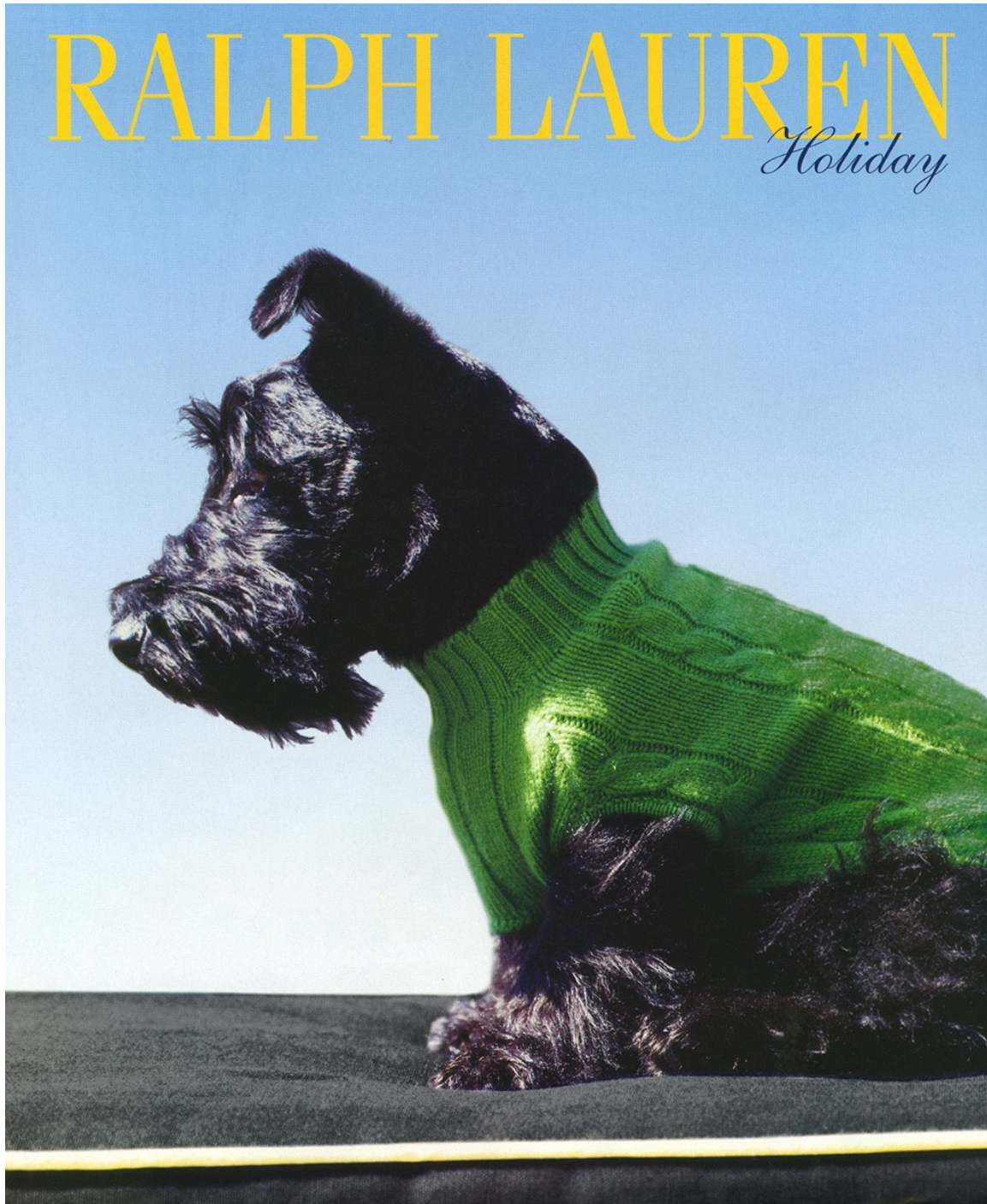
# Art Department



Pieter Estersohn

[www.art-dept.com](http://www.art-dept.com)

# Art Department



Pieter Estersohn

[www.art-dept.com](http://www.art-dept.com)

# Art Department



Pieter Estersohn

[www.art-dept.com](http://www.art-dept.com)

# Art Department



Pieter Estersohn

[www.art-dept.com](http://www.art-dept.com)

# Art Department



Pieter Estersohn

[www.art-dept.com](http://www.art-dept.com)

# Art Department



RALPH LAUREN  
H O M E

Pieter Estersohn

[www.art-dept.com](http://www.art-dept.com)

# Art Department



Pieter Estersohn

[www.art-dept.com](http://www.art-dept.com)

# Art Department



Pieter Estersohn

[www.art-dept.com](http://www.art-dept.com)

# Art Department



## FRENCH FABRICS

Suzani viscose-cotton by Manuel Canovas from Cowtan & Tout. Zine Block table by the Terence Conran Shop. Facing page, from top: Lelièvre's Kentucky cotton from Old World Weavers. Cheverny Damask cotton-silk-viscose from Brunschwig & Fils. Dari silk by Manuel Canovas from Cowtan & Tout. Boussac Fadini's Obaldia cotton-viscose-polyester. Pizzicati cotton-viscose by Nobilis. Scalamanré's Paquin cotton-viscose-polyamide. Piqué Nîmes cotton-polyester by Pierre Frey. Vintage iron bar table from ABC Carpet & Home. All fabrics are available to the trade only. See Resources.

## Pieter Estersohn

[www.art-dept.com](http://www.art-dept.com)

# Art Department



Pieter Estersohn

[www.art-dept.com](http://www.art-dept.com)

# Art Department



From top: Caldicot linen European shams, Morgan Stripe throw pillow, Stinbury standard pillowcases, Morgan Stripe boudoir pillow, Stinbury fitted and flat sheets, Negril blanket, Petherton polka-dot silk throw, and Caldicot linen throw pillow, all from Ralph Lauren Home's Moreton Hall collection. Blaine panel bed by Restoration Hardware. See Resources.

## Pieter Estersohn

[www.art-dept.com](http://www.art-dept.com)

# Art Department

Sterling-silver shaving-soap bowl and brush by Elsa Peretti for Tiffany & Co. Facing page, from top: Chanel N° 5 bath gel. Striped toothbrush by Waterworks. Armani Casa's Fiume porcelain dish. Ballard lacquered-wood box by Ralph Lauren Home. First-Aid aluminum storage box from the Terence Conran Shop. Polo Ralph Lauren's Blue soap on a rope. Savon de Marseille soap from Apartment 48. Surface of Haziza's Passion Pink acrylic sheeting. See Resources.



## Pieter Estersohn

[www.art-dept.com](http://www.art-dept.com)

# Art Department



23

Pieter Estersohn

[www.art-dept.com](http://www.art-dept.com)

# Art Department



15

Pieter Estersohn

[www.art-dept.com](http://www.art-dept.com)

# Art Department



## ENGLISH CHINA

Clockwise from far left: Wicker Basket creamer by Ralph Lauren Home. Royal Worcester's Capri teacup and saucers, bread and butter plates, and salad/dessert plate. Wedgwood's Simply White footed cake stand. Linen napkins from White on White. Simply White tureen and pitcher and Strawberry & Vine covered vegetable dish, all by Wedgwood. Wicker Basket open vegetable dish and pitcher by Ralph Lauren Home. Hampton Court blue teacup, saucers, and dessert plates and Avington powder-blue dessert plates and chargers, all by William Yeoward Crystal. Ralph Lauren Home's Wicker Basket teacups and sugar bowl. Victoria Strawberry teacups, saucers, and assorted plates by Minton for Royal Doulton. Isadora Floral delft wallpaper by Ralph Lauren Home. Facing page: Vine and Elm plates by Spode. Isadora Floral navy wallpaper by Ralph Lauren Home. See Resources.

## Pieter Estersohn

[www.art-dept.com](http://www.art-dept.com)

# Art Department



Pieter Estersohn

[www.art-dept.com](http://www.art-dept.com)

# Art Department



Who said  
a couple  
should  
choose  
only one  
pattern?

**THE  
WELL-MIXED  
TABLE**

**Black and white ball:** Djarba crystal highball, \$355, and tumbler, \$290, by Hermès, 800-238-5522. Black charger, \$30, and white salad plate, \$24, from the Night & Day Collection by Wedgwood, 800-955-1550. Spiral alloy tray, by Nambé, \$95, 800-443-0339. Mercer Street flatware, from Ralph Lauren Home, \$150 for a five-piece setting, 800-578-7656. Lokki cotton, by Maija Isola for Marimekko, \$48 per yard, from Delgreco Textiles, 888-343-7285. Woman bud vase, from The Stripe Collection, \$40, by Jonathan Adler, 877-287-1910.

PHOTOGRAPHY BY PIETER ESTERSOHN. PRODUCED BY ANITA SARSIDI

Pieter Estersohn

[www.art-dept.com](http://www.art-dept.com)

# Art Department



Pieter Estersohn

[www.art-dept.com](http://www.art-dept.com)

# Art Department



Pieter Estersohn

[www.art-dept.com](http://www.art-dept.com)

# Art Department



Pieter Estersohn

[www.art-dept.com](http://www.art-dept.com)

# Art Department



## ITALIAN MODERNISM

Clockwise from top left: Moroso's Springfield Collection turquoise-lacquered aluminum cocktail table from Format. Sunset powder-blue steel chair from Cappellini Modern Age. Kubo glass table by Vismara from Property. Moroso's Springfield Collection yellow-lacquered aluminum table and Molteni & Co.'s St. Germain leather-wrapped-metal chair from Format. Facing page: Tempo white-lacquered polyurethane-and-steel table by Zanotta from Domus. Alexander Girard's Millerstripe wool-nylon fabric by Maharam. See Resources.

## Pieter Estersohn

[www.art-dept.com](http://www.art-dept.com)