

Art Department



Pieter Estersohn

www.art-dept.com

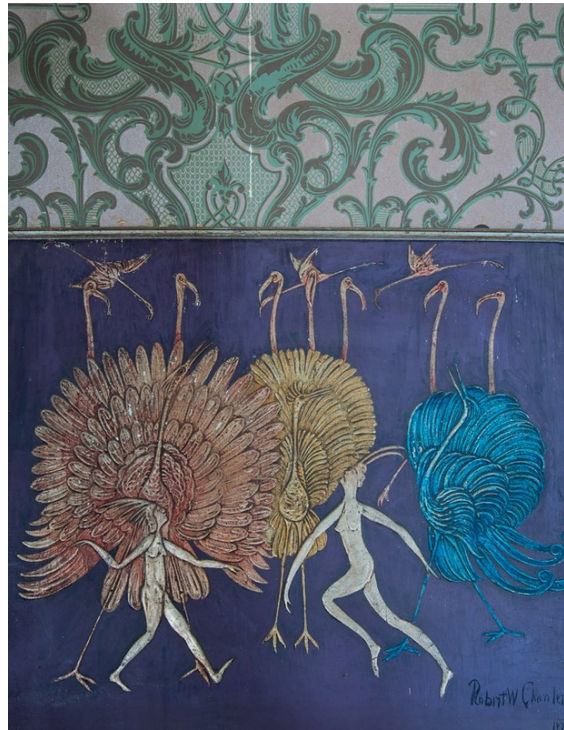
Art Department



Pieter Estersohn

www.art-dept.com

Art Department



Pieter Estersohn

Art Department



INFALLIBLY PAPAL

Be it soaring ceilings, a rational floor plan or a travertine loggia, the Rocca Farnese, north of Rome, has all the architectural features one associates with that eponymous dynasty of popes. Yet many such hallmarks were hidden by later additions until art historian Stefano Aluffi-Pentini bought this, their first seat of power, in 2009 and set about restoring it to its spare splendour. Machiavellian the family may have been, but its members were obsessed by beauty, as Marcella Caracciolo Chia reports. Photography: Pieter Estersohn



Pieter Estersohn

Art Department



Pieter Estersohn

www.art-dept.com

Art Department



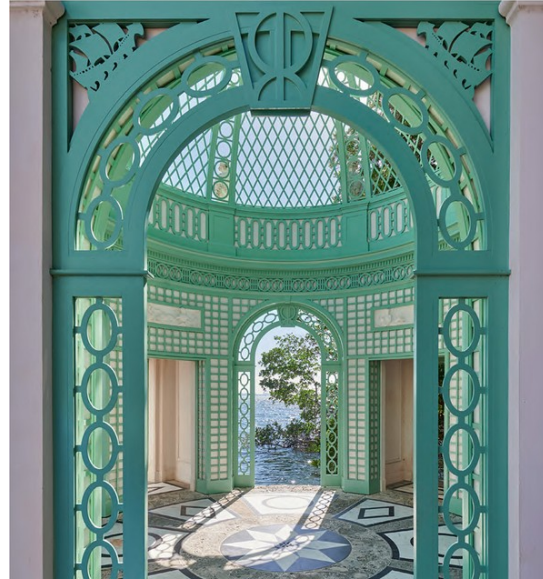
Pieter Estersohn

www.art-dept.com

Art Department

THE WORLD OF INTERIORS

MAY 2023



THE MERCHANT OF MIAMI

With its gilt torchères, grotto and even a resident gondolier, Villa Vizcaya owed far more to Venice than to its actual location, the Magic City, when built early last century. The vision of just one man – a photographer with a collection of rare and antiques any museum curator would covet – this subtropical Serenissima never fails to stupefy all who flock there these days. Yet no sooner had the original owner moved in than palazzo life appeared to pall, the poor cherub. Why? Enter Mitchell Owens with a plot summary... Photography: Pieter Estersohn



Pieter Estersohn

www.art-dept.com

Art Department



Pieter Estersohn

www.art-dept.com

Art Department



Pieter Estersohn

www.art-dept.com

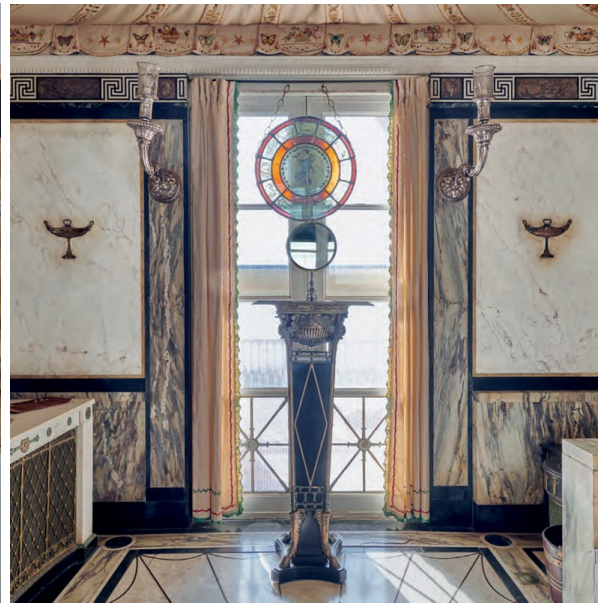
Art Department



Pieter Estersohn

www.art-dept.com

Art Department



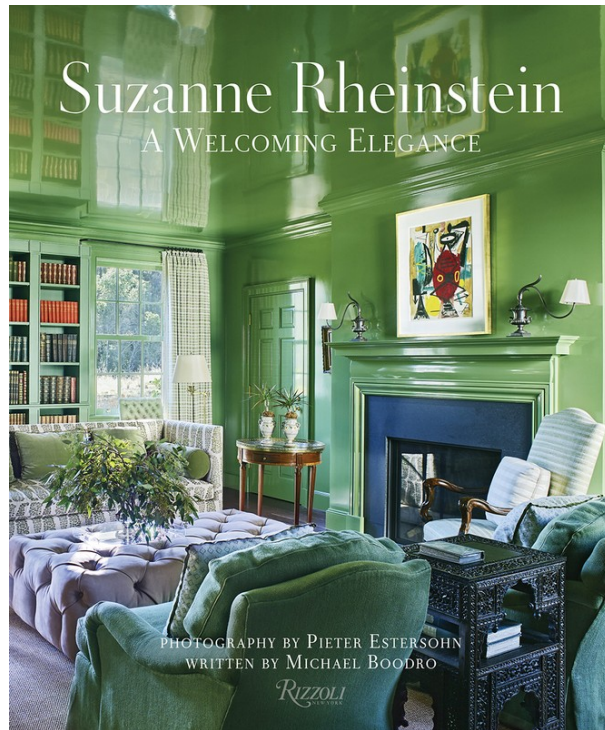
Pieter Estersohn

Art Department



Pieter Estersohn

Art Department



Pieter Estersohn

www.art-dept.com

Art Department



Pieter Estersohn

www.art-dept.com

Art Department



Pieter Estersohn

www.art-dept.com

Art Department



Pieter Estersohn

www.art-dept.com

Art Department



Pieter Estersohn

www.art-dept.com

Art Department



Pieter Estersohn

www.art-dept.com

Art Department



Pieter Estersohn

www.art-dept.com

Art Department



Pieter Estersohn

www.art-dept.com

Art Department



Pieter Estersohn

www.art-dept.com

Art Department



Pieter Estersohn

www.art-dept.com

Art Department



Pieter Estersohn

www.art-dept.com

Art Department



Pieter Estersohn

www.art-dept.com

Art Department



Pieter Estersohn

www.art-dept.com

Art Department



Pieter Estersohn

Art Department



Pieter Estersohn

Art Department



Pieter Estersohn

Art Department



Pieter Estersohn

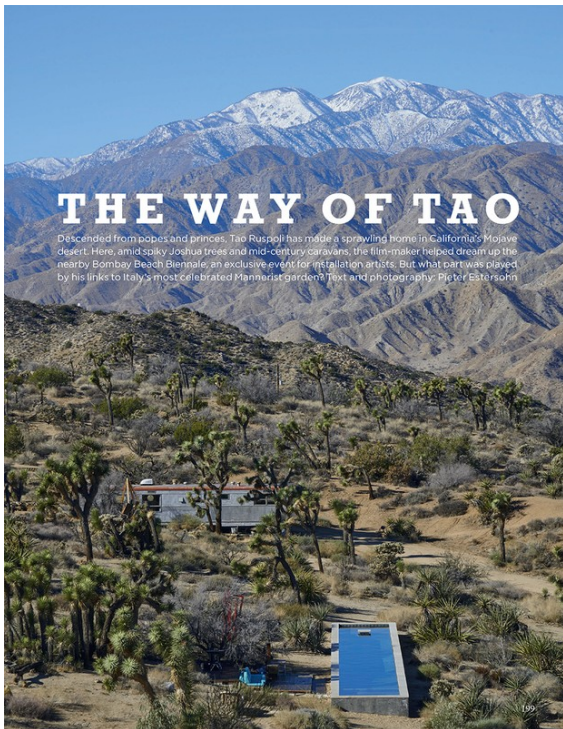
www.art-dept.com

Art Department



Pieter Estersohn

Art Department



Pieter Estersohn

Art Department



Pieter Estersohn

www.art-dept.com

Art Department



Pieter Estersohn

www.art-dept.com

Art Department



Pieter Estersohn

www.art-dept.com

Art Department



Pieter Estersohn

www.art-dept.com

Art Department



Pieter Estersohn

www.art-dept.com

Art Department



Pieter Estersohn

www.art-dept.com

Art Department



Pieter Estersohn

Art Department



Pieter Estersohn

www.art-dept.com

Art Department



ABOVE The "villa house" facing the bay at the western end of the property serves as a guesthouse. A swimming pool and a dock equipped with boats for fishing and other watersports complements the lovely prospect of olive for olive. **OPPOSITE** Masonry terraces fitted with cushions bring a hint of Cape Dutch style to the terrace.

228 THE TROPICS



ABOVE The jaunty pattern of blue, brown, and white Cuban tiles "popping" the walls in the kitchen reprises the color scheme of adjacent living areas. The deep orange wood, painted white to match the woodwork, equals the usual "white." Large Looor outdoor dining chairs are equally at home at the veranda and kitchen tables. They are moved back and forth, depending on the crowd. **OPPOSITE** The stormless, low-slung window slides entirely into the wall and creates an amazing picture frame for the palm-dotted view of the ocean.

228 THE TROPICS

Pieter Estersohn

www.art-dept.com

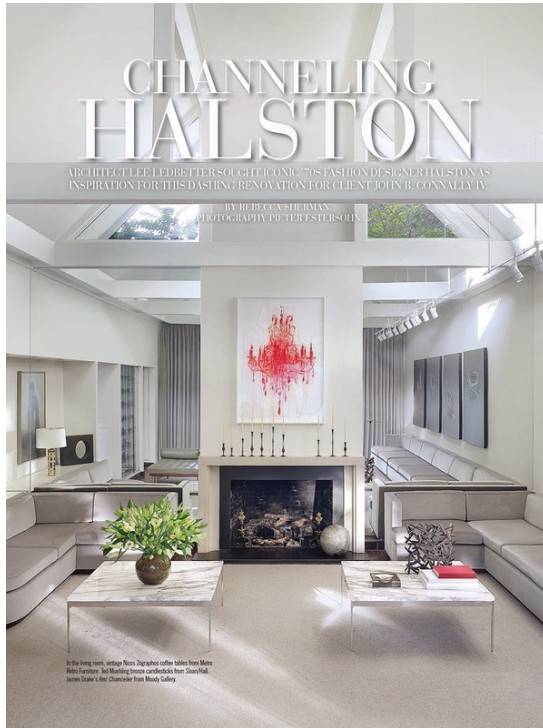
Art Department



Pieter Estersohn

www.art-dept.com

Art Department



Pieter Estersohn

www.art-dept.com

Art Department



Pieter Estersohn

www.art-dept.com

Art Department



Pieter Estersohn

www.art-dept.com

Art Department



Pieter Estersohn

www.art-dept.com

Art Department



Pieter Estersohn

www.art-dept.com

Art Department



Pieter Estersohn

www.art-dept.com

Art Department



Pieter Estersohn

www.art-dept.com

Art Department



Pieter Estersohn

www.art-dept.com

Art Department



Pieter Estersohn

www.art-dept.com

Art Department



Pieter Estersohn

www.art-dept.com

Art Department



Pieter Estersohn

www.art-dept.com

Art Department



Pieter Estersohn

www.art-dept.com

Art Department



Pieter Estersohn

www.art-dept.com

Art Department



Pieter Estersohn

www.art-dept.com

Art Department



Pieter Estersohn

www.art-dept.com

Art Department



Pieter Estersohn

www.art-dept.com

Art Department



Pieter Estersohn

www.art-dept.com

Art Department



Pieter Estersohn

www.art-dept.com

Art Department



Pieter Estersohn

www.art-dept.com

Art Department



Pieter Estersohn

www.art-dept.com

Art Department



Pieter Estersohn

www.art-dept.com

Art Department



Pieter Estersohn

www.art-dept.com

Art Department



The Finish Line

RACING LEGEND JEFF GORDON TURNED TO HIS PIT CREW OF DESIGN PROS AND HIS DISCERNING WIFE TO CREATE THE ULTIMATE MANHATTAN APARTMENT.

BY TOM VANDERBILT
PHOTOGRAPHS BY
PIETER ESTERSOHN

Jeff Gordon and Digital Woodstock in their New York City living room with their children, Leo and Ella. The interior style comes by "Victim" Kogen. For details, see page 135.

Pieter Estersohn

www.art-dept.com

Art Department



Pieter Estersohn

www.art-dept.com

Art Department



PARED TO PERFECTION

With her most cherished antiques in tow, Charleston designer Amelia Handegan trades the trappings of a big historic house for a fresh start in a new jewel box of a space.

INTERIOR DESIGN BY AMELIA HANDEGAN
PHOTOGRAPHY BY PIETER ESTERSON
WRITTEN BY INGRID ABRAMOVITCH

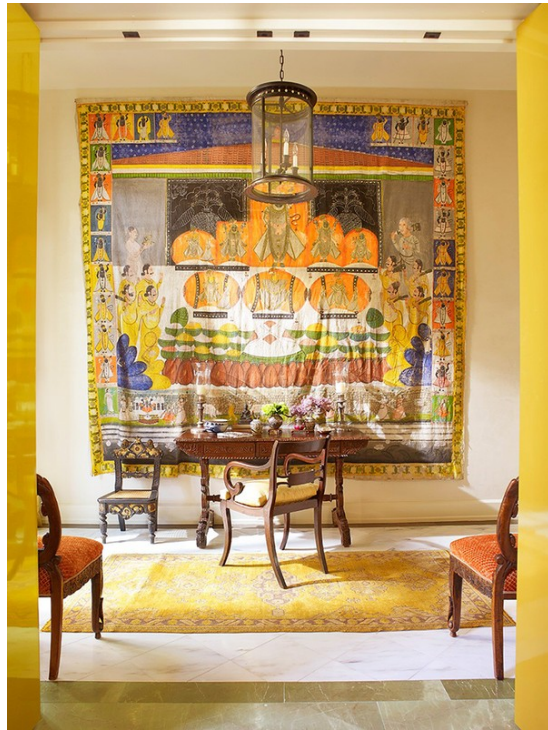
160

A sense of restraint makes this space feel modern. Circa-1830 Swedish sofa and Armani, Inc., burlap chair by Sabine Frey (see our March 2016 issue) in a Christopher Wray fabric; circa-18th-century Italian bench with a seat in Regency velvet; Golden & Associates Antiques; 19th-century French Chippendale screen; French table and converted oil lamp; Amelia, Inc.; antique mirror; David Dwyer Antiques; walls in custom Venetian plaster; Kristen Bunting; 18th-century portrait from Charleston.

Pieter Estersohn

www.art-dept.com

Art Department



Pieter Estersohn

www.art-dept.com

Art Department



Pieter Estersohn

www.art-dept.com

Art Department



Pieter Estersohn

www.art-dept.com

Art Department



Pieter Estersohn

www.art-dept.com

Art Department



Pieter Estersohn

www.art-dept.com

Art Department



Pieter Estersohn

www.art-dept.com

Art Department



Pieter Estersohn

www.art-dept.com

Art Department



Pieter Estersohn

www.art-dept.com

Art Department



Pieter Estersohn

www.art-dept.com

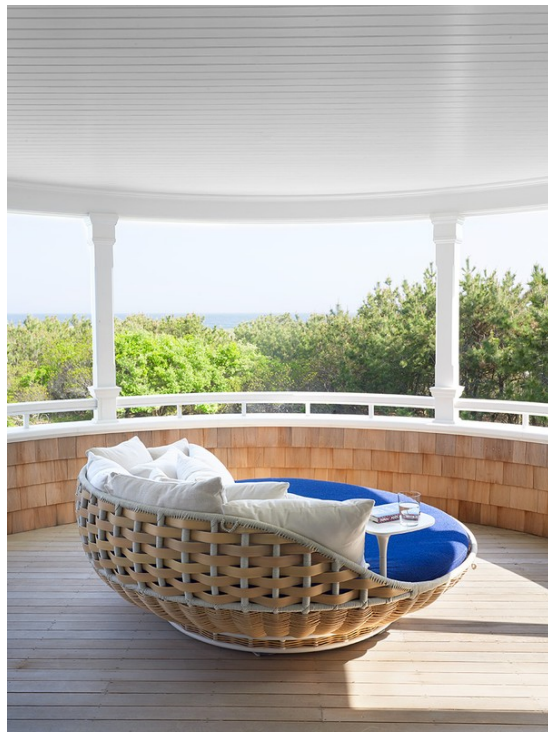
Art Department



Pieter Estersohn

www.art-dept.com

Art Department



Pieter Estersohn

www.art-dept.com

Art Department



Pieter Estersohn

www.art-dept.com

Art Department



Pieter Estersohn

www.art-dept.com

Art Department



Pieter Estersohn

www.art-dept.com

Art Department



Pieter Estersohn

www.art-dept.com

Art Department



Pieter Estersohn

www.art-dept.com

Art Department



Pieter Estersohn

www.art-dept.com

Art Department



Pieter Estersohn

www.art-dept.com

Art Department



Pieter Estersohn

www.art-dept.com

Art Department



Pieter Estersohn

www.art-dept.com

Art Department



Pieter Estersohn

www.art-dept.com