

Art Department



Sophie Delaporte

www.art-dept.com

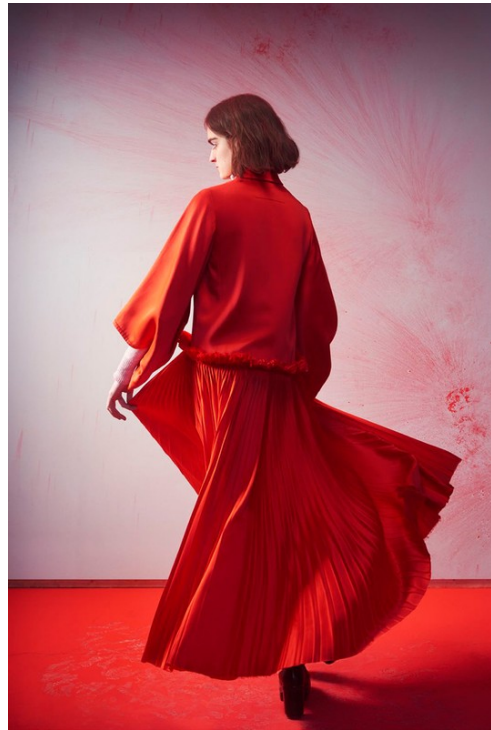
Art Department



Sophie Delaporte

www.art-dept.com

Art Department



Sophie Delaporte

www.art-dept.com

Art Department



Sophie Delaporte

www.art-dept.com

Art Department



Sophie Delaporte

www.art-dept.com

Art Department



Sophie Delaporte

www.art-dept.com

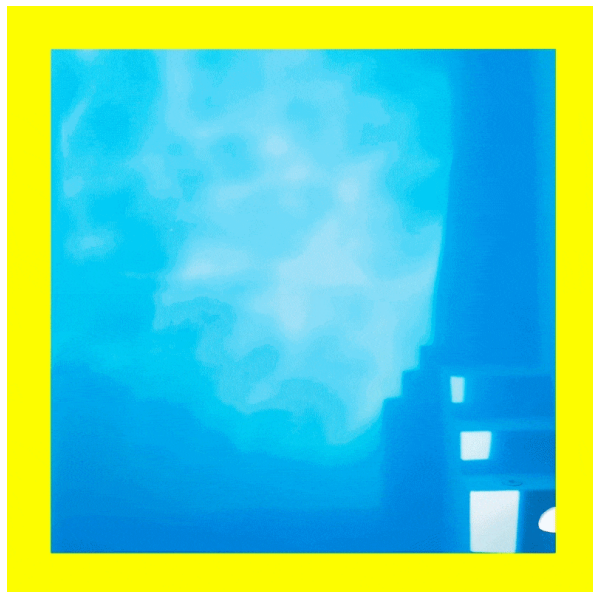
Art Department



Sophie Delaporte

www.art-dept.com

Art Department



Sophie Delaporte

Art Department



Sophie Delaporte

www.art-dept.com

Art Department



Sophie Delaporte

www.art-dept.com

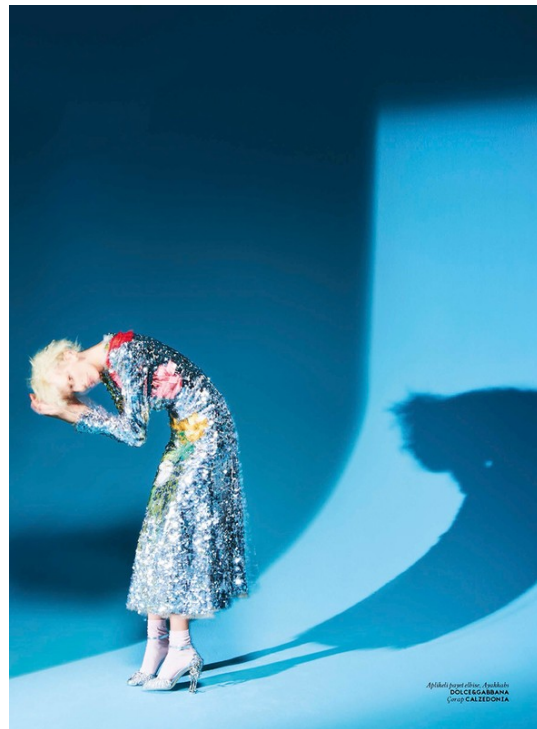
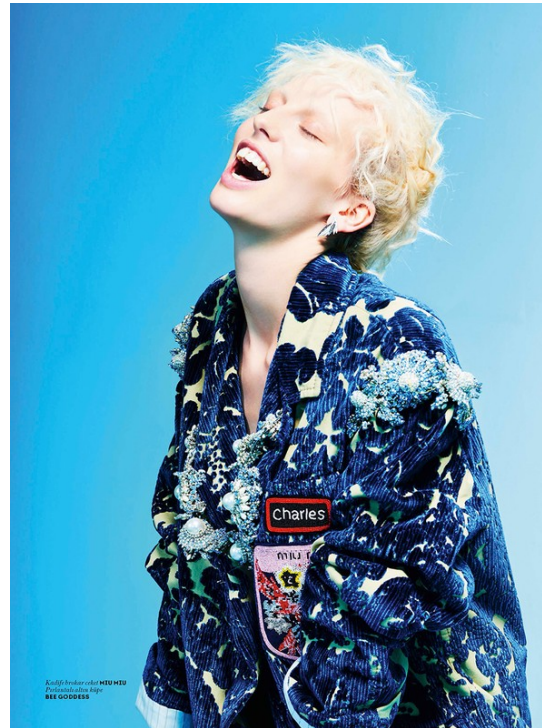
Art Department



Sophie Delaporte

www.art-dept.com

Art Department



Sophie Delaporte

www.art-dept.com

Art Department



Photo: Oliver BALENCIAGA
 Post: LAURENCE DESJARD
 Copy: CALEZDORNA
 Set: Karim Pajani @ Jodi Reed
 Makeup: Claire Poud @ Caron, Spyry M.J.C. Grubalczyk
 Model: Edie Falco / Susie Manly
 Casting: Elizabeth Ulmer, Rose @ Creative
 Make: Antonia / Jani Miller, Helen Snow

260 MAKEUP
 彩妆

b l a c k
 &
 w h i t e

黑和白不仅是对立面,又奇怪地互相依存,不离不弃。黑和白,两种女孩,你要哪种?
 副: SOPHIE DELAPORTE 造型: VICTORIA BARLETTI 撰文: 王莉雅 IDA WANG

黑 白 双 生

服饰与美容 YOGEE NOVEMBER 2008



发饰: Franco Gabbri
 at Structures
 妆容: Sami
 Matarnova at
 Frank Ryan
 模特: Huijing Shin,
 Peng Lin
 人物造型:
 Pongpob Dui
 Momo
 副片: Amos Pizzoni
 at Art Department
 用写意的涂鸦来使
 用黑色妆容,是这一
 季Amp Karamanova
 秀上的做法。
 指甲造型师:
 Cathie Klein
 黑色指甲:
 Cathie Klein Team
 美甲总监:
 Dinaqua

Sophie Delaporte

www.art-dept.com

Art Department



Sophie Delaporte

www.art-dept.com

Art Department



Sophie Delaporte

www.art-dept.com

Art Department



Sophie Delaporte

www.art-dept.com

Art Department



Sophie Delaporte

www.art-dept.com