

Art Department



Thomas Loof

www.art-dept.com

Art Department



Thomas Loof

www.art-dept.com

Art Department



Thomas Loof

www.art-dept.com

Art Department



Thomas Loof

www.art-dept.com

Art Department



Thomas Loof

www.art-dept.com

Art Department



26

Thomas Loof

www.art-dept.com

Art Department



Thomas Loof

www.art-dept.com

Art Department



Thomas Loof

www.art-dept.com

Art Department



Thomas Loof

www.art-dept.com

Art Department



Thomas Loof

www.art-dept.com

Art Department



Thomas Loof

www.art-dept.com

Art Department



Thomas Loof

www.art-dept.com

Art Department



Thomas Loof

www.art-dept.com

Art Department



Thomas Loof

www.art-dept.com

Art Department



Thomas Loof

www.art-dept.com

Art Department



Thomas Loof

www.art-dept.com

Art Department



Thomas Loof

www.art-dept.com

Art Department



Thomas Loof

www.art-dept.com

Art Department



Thomas Loof

Art Department



Thomas Loof

www.art-dept.com

Art Department



Thomas Loof

www.art-dept.com

Art Department



Thomas Loof

www.art-dept.com

Art Department



PART II

THE EMPRESS OF FASHION

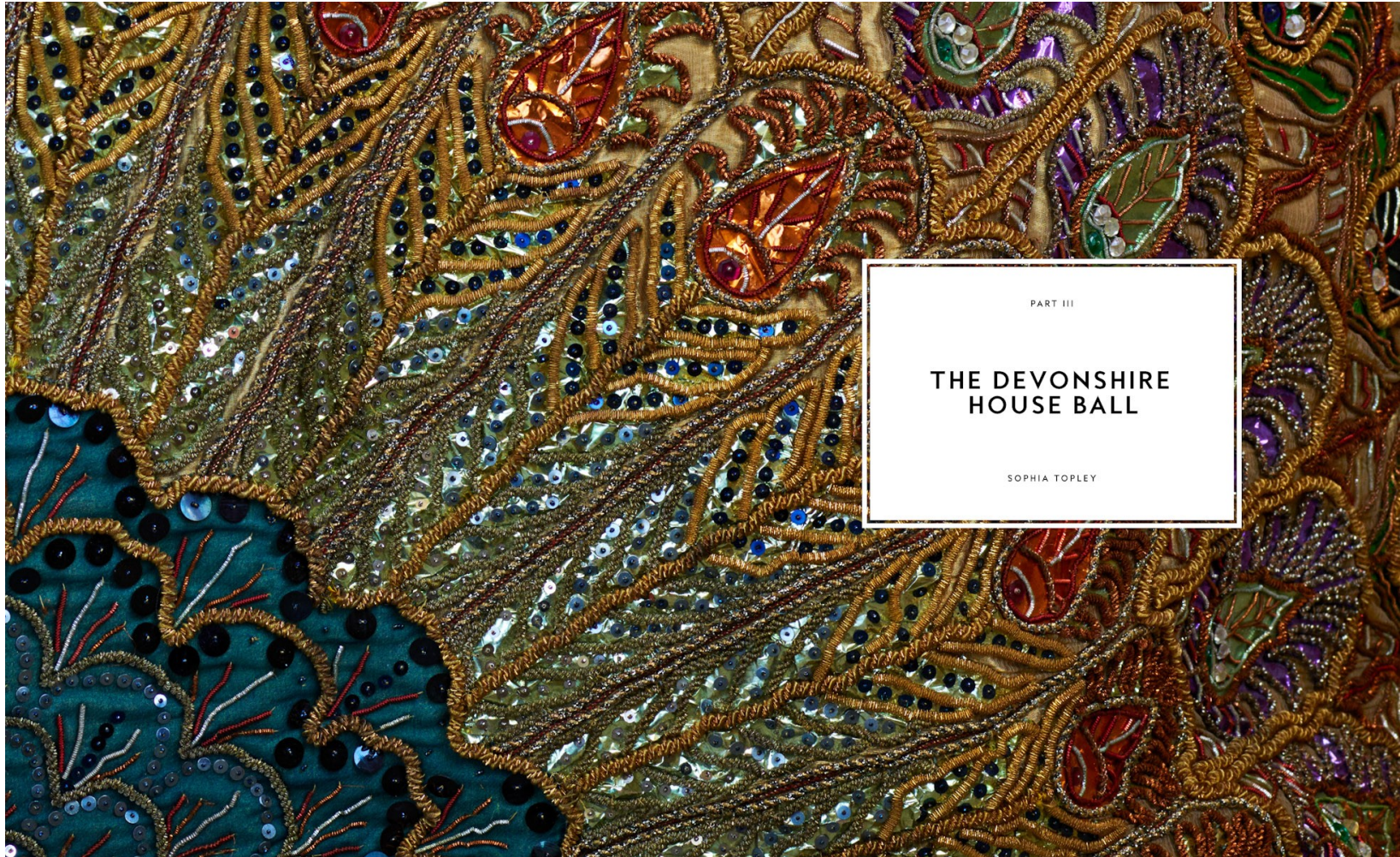
Georgiana, Duchess of Devonshire,
1757-1806

KIMBERLY CHRISMAN-CAMPBELL

Thomas Loof

www.art-dept.com

Art Department



Thomas Loof

www.art-dept.com

Art Department



Thomas Loof

www.art-dept.com

Art Department



Thomas Loof

www.art-dept.com

Art Department



Thomas Loof

www.art-dept.com

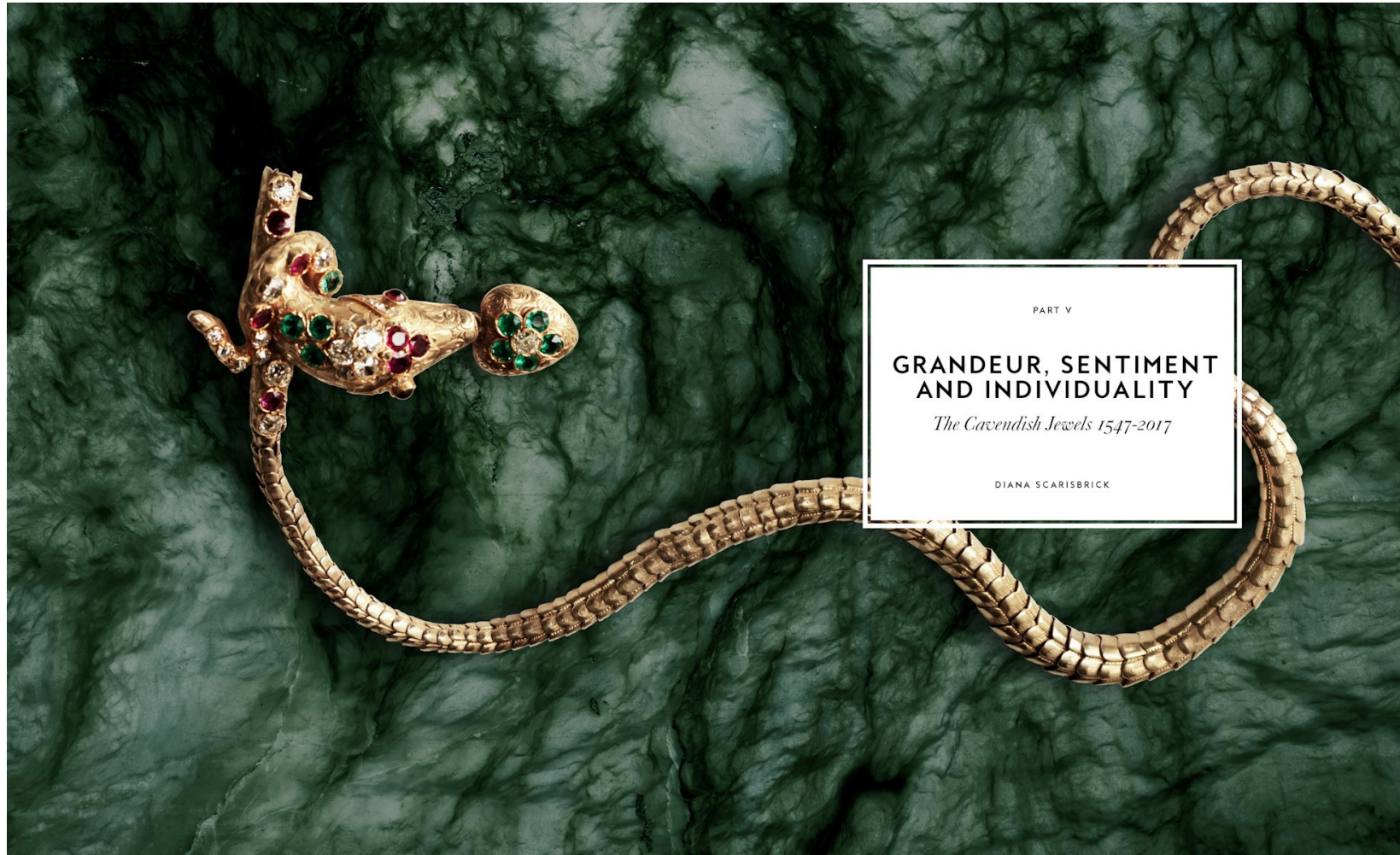
Art Department



Thomas Loof

www.art-dept.com

Art Department



PART V

GRANDEUR, SENTIMENT AND INDIVIDUALITY

The Cavendish Jewels 1547-2017

DIANA SCARISBRICK

Thomas Loof

www.art-dept.com

Art Department



Thomas Loof

www.art-dept.com

Art Department



Thomas Loof

www.art-dept.com

Art Department



Thomas Loof

www.art-dept.com

Art Department



Thomas Loof

www.art-dept.com

Art Department



Thomas Loof

www.art-dept.com

Art Department



Thomas Loof

www.art-dept.com

Art Department



Thomas Loof

www.art-dept.com

Art Department



Thomas Loof

www.art-dept.com

Art Department



Thomas Loof

www.art-dept.com

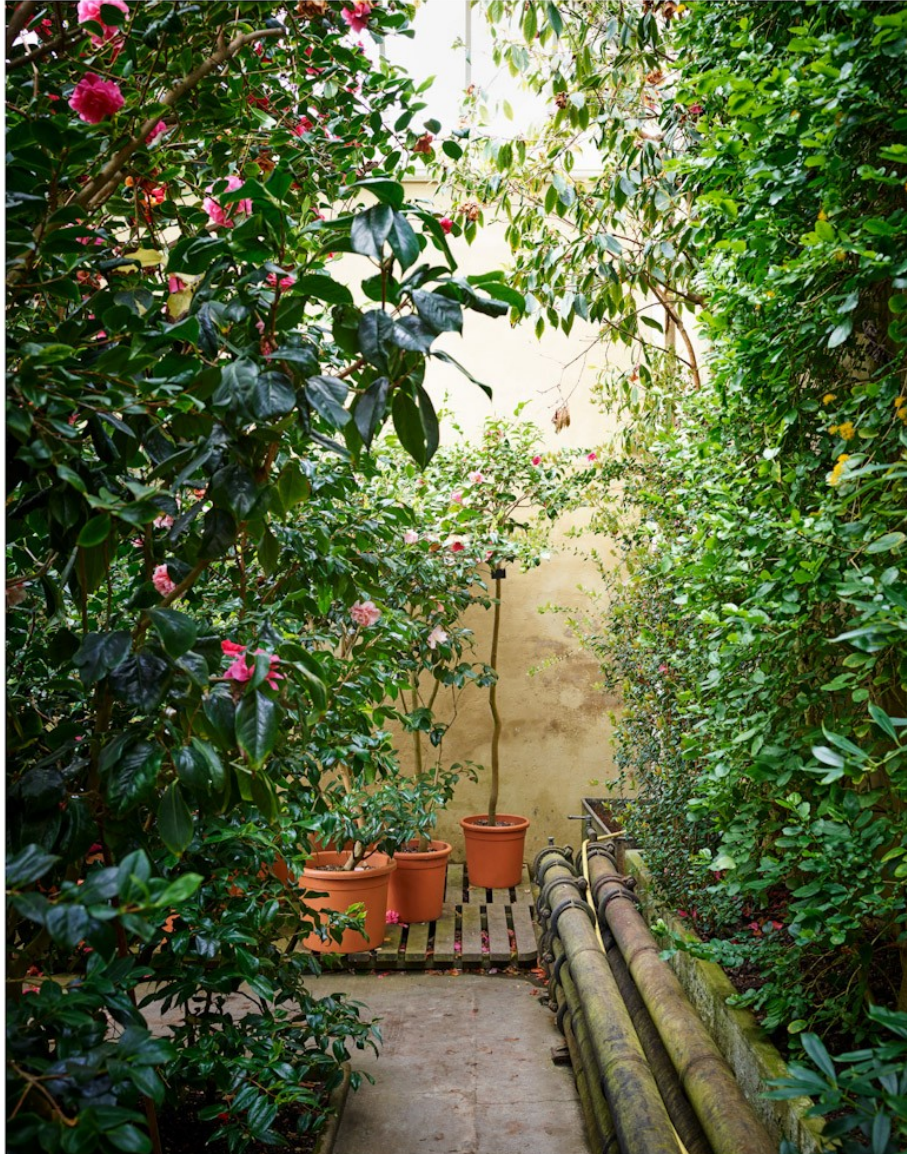
Art Department



Thomas Loof

www.art-dept.com

Art Department



196

Thomas Loof

www.art-dept.com

Art Department



Thomas Loof

www.art-dept.com

Art Department



200

Thomas Loof

www.art-dept.com

Art Department



Thomas Loof

www.art-dept.com