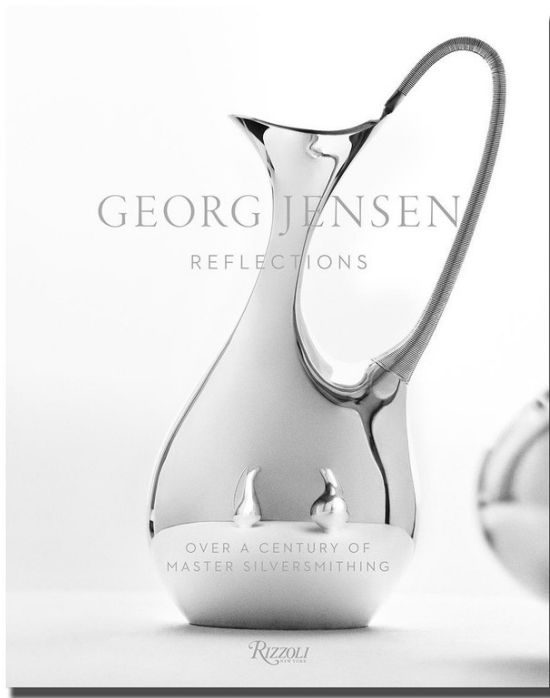
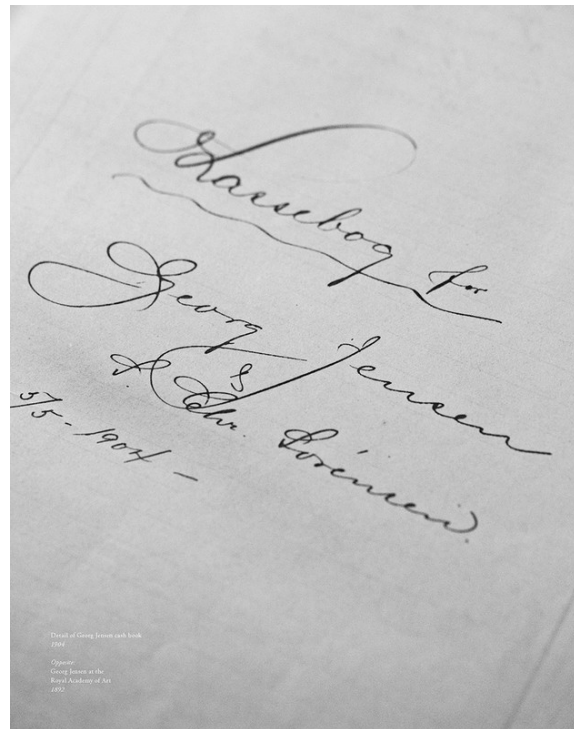


# Art Department

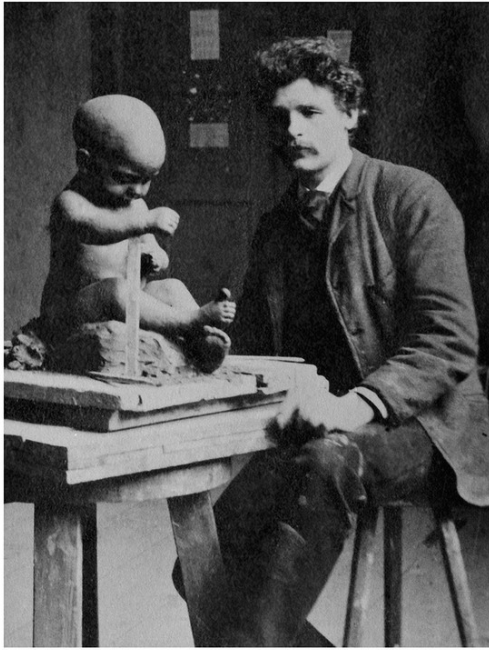


HENNING KOPPEL  
Pitcher No. 192  
1916  
Silver with Porcelain (RBC) top  
Reimagined in 2013 by Jens Arne and  
Alan Heston for the GEORG JENSEN  
50th Anniversary. The pitcher was constructed with an  
interior red lacquer.



Thomas Loof

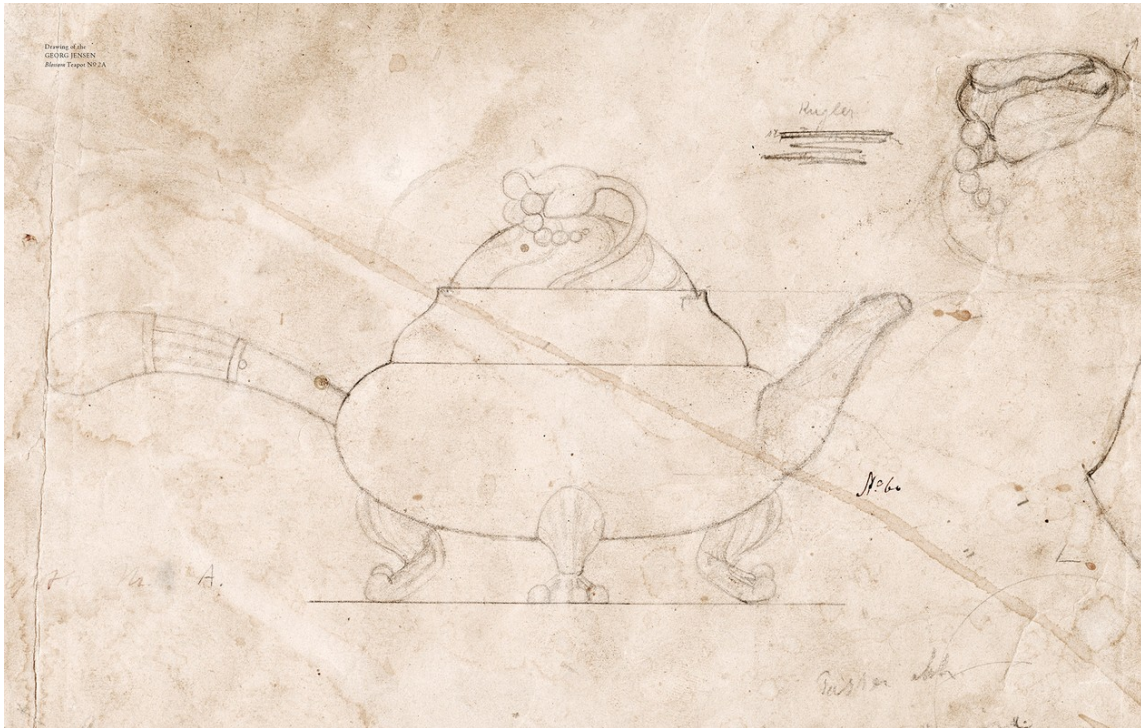
# Art Department



Thomas Loof

[www.art-dept.com](http://www.art-dept.com)

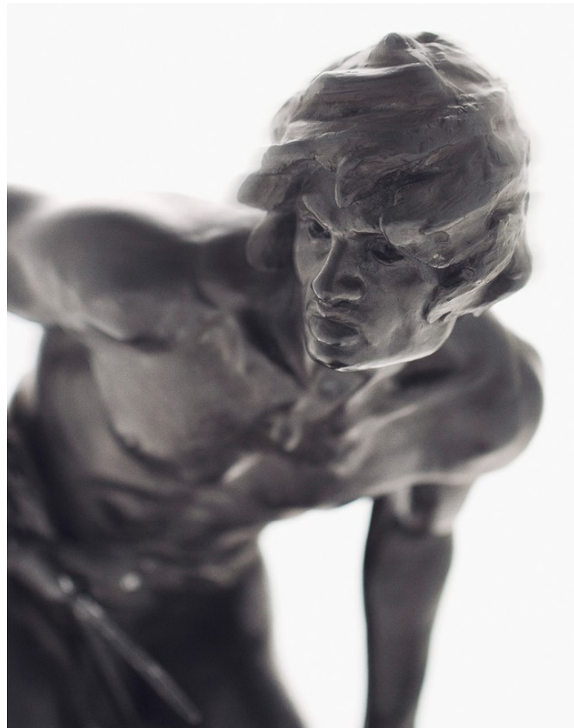
# Art Department



Thomas Loof

[www.art-dept.com](http://www.art-dept.com)

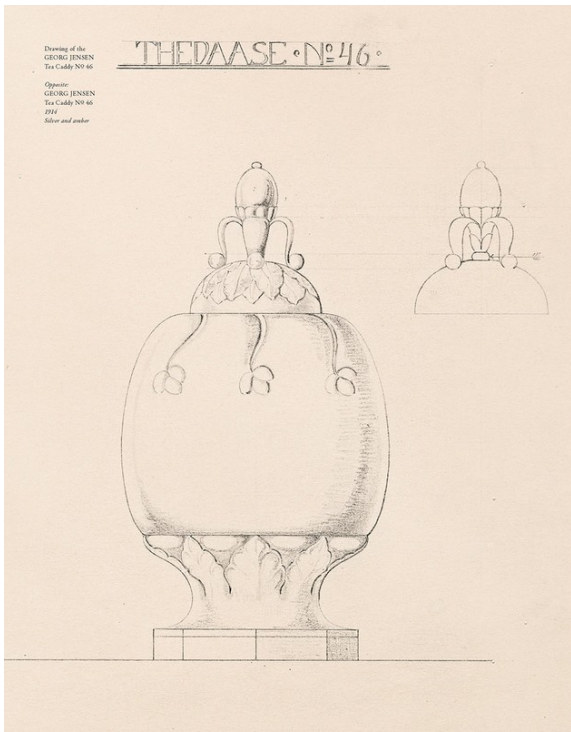
# Art Department



Thomas Loof

[www.art-dept.com](http://www.art-dept.com)

# Art Department



Thomas Loof

# Art Department



Thomas Loof

[www.art-dept.com](http://www.art-dept.com)

# Art Department



## Thomas Loof

[www.art-dept.com](http://www.art-dept.com)

# Art Department



Thomas Loof



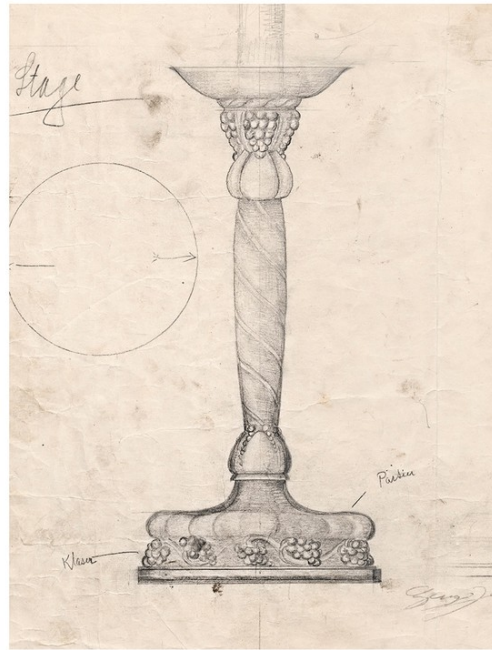
# Art Department



## Thomas Loof

[www.art-dept.com](http://www.art-dept.com)

# Art Department



## Thomas Loof

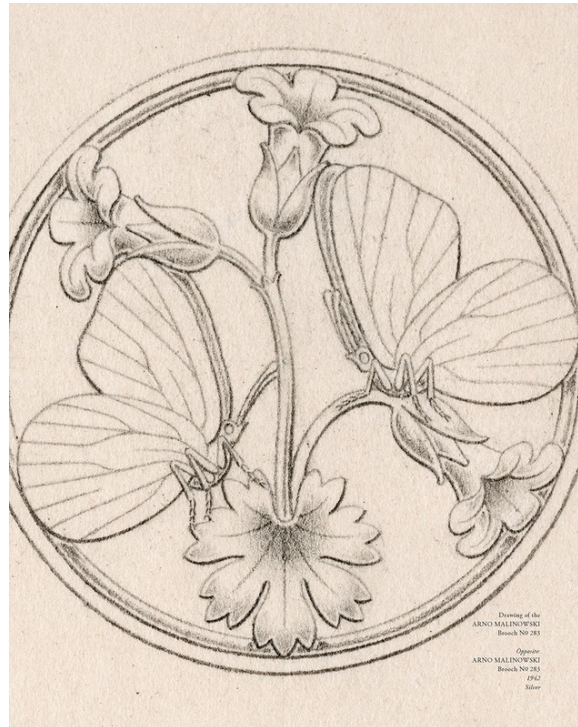
# Art Department



Thomas Loof

[www.art-dept.com](http://www.art-dept.com)

# Art Department



## Thomas Loof

[www.art-dept.com](http://www.art-dept.com)

# Art Department



Thomas Loof

[www.art-dept.com](http://www.art-dept.com)

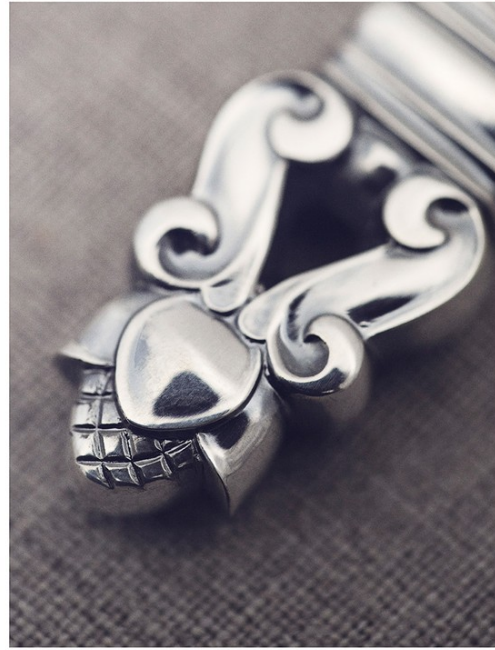
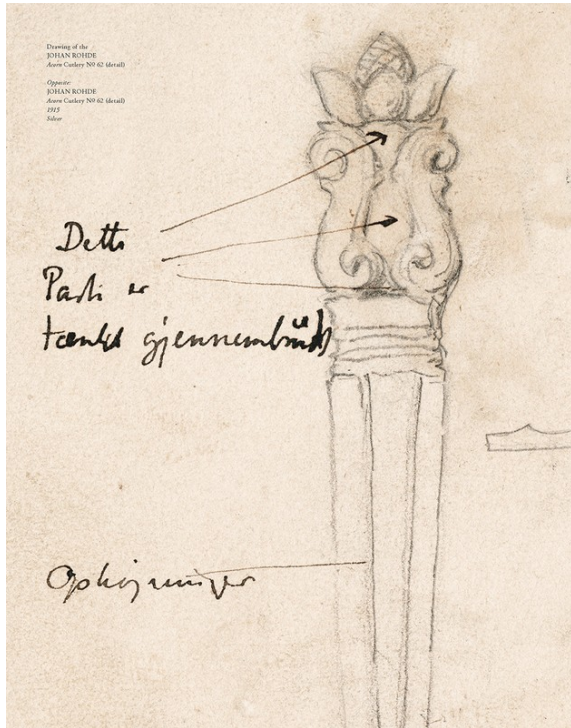
# Art Department



## Thomas Loof

[www.art-dept.com](http://www.art-dept.com)

# Art Department



## Thomas Loof

# Art Department

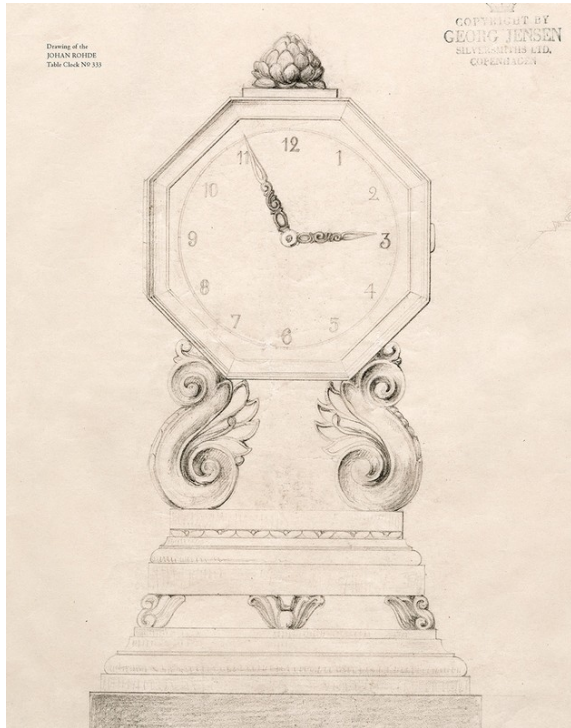


## Thomas Loof

[www.art-dept.com](http://www.art-dept.com)



# Art Department



Thomas Loof

# Art Department



Thomas Loof

[www.art-dept.com](http://www.art-dept.com)

# Art Department



Thomas Loof

[www.art-dept.com](http://www.art-dept.com)

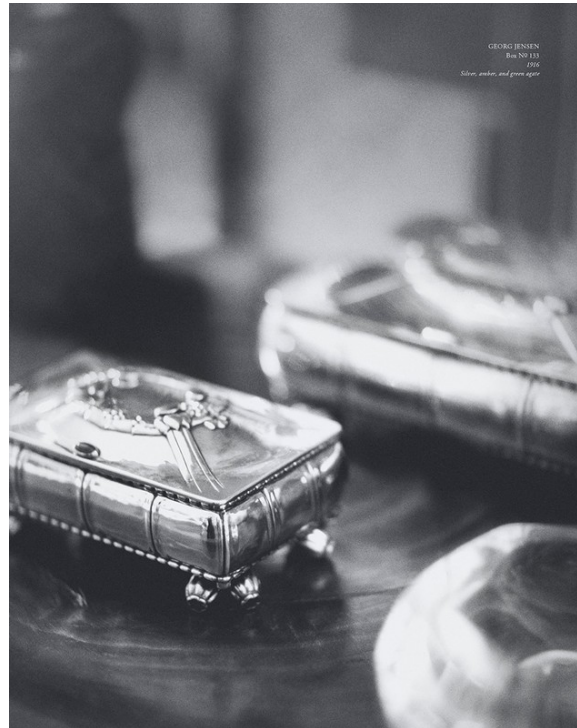
# Art Department



Thomas Loof

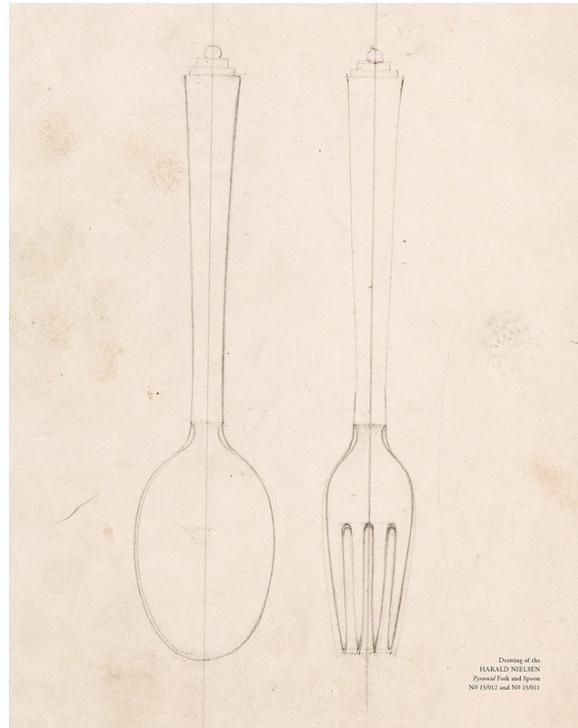
[www.art-dept.com](http://www.art-dept.com)

# Art Department



## Thomas Loof

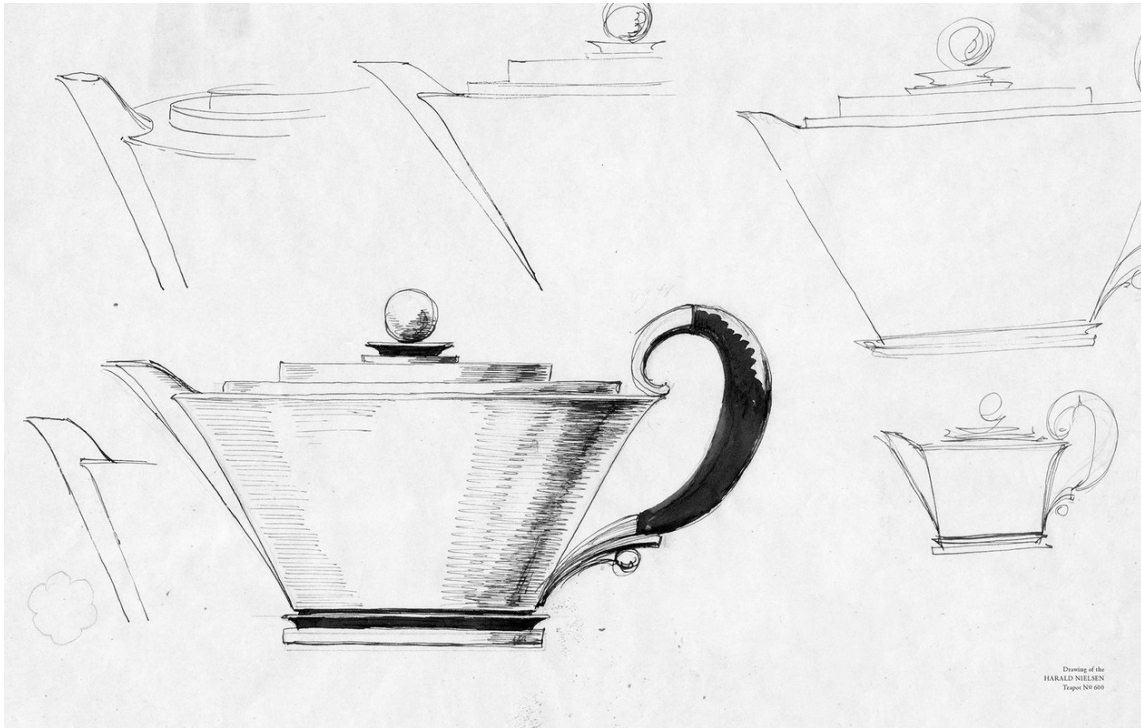
# Art Department



## Thomas Loof

[www.art-dept.com](http://www.art-dept.com)

# Art Department



## Thomas Loof

[www.art-dept.com](http://www.art-dept.com)

# Art Department



## Thomas Loof

[www.art-dept.com](http://www.art-dept.com)

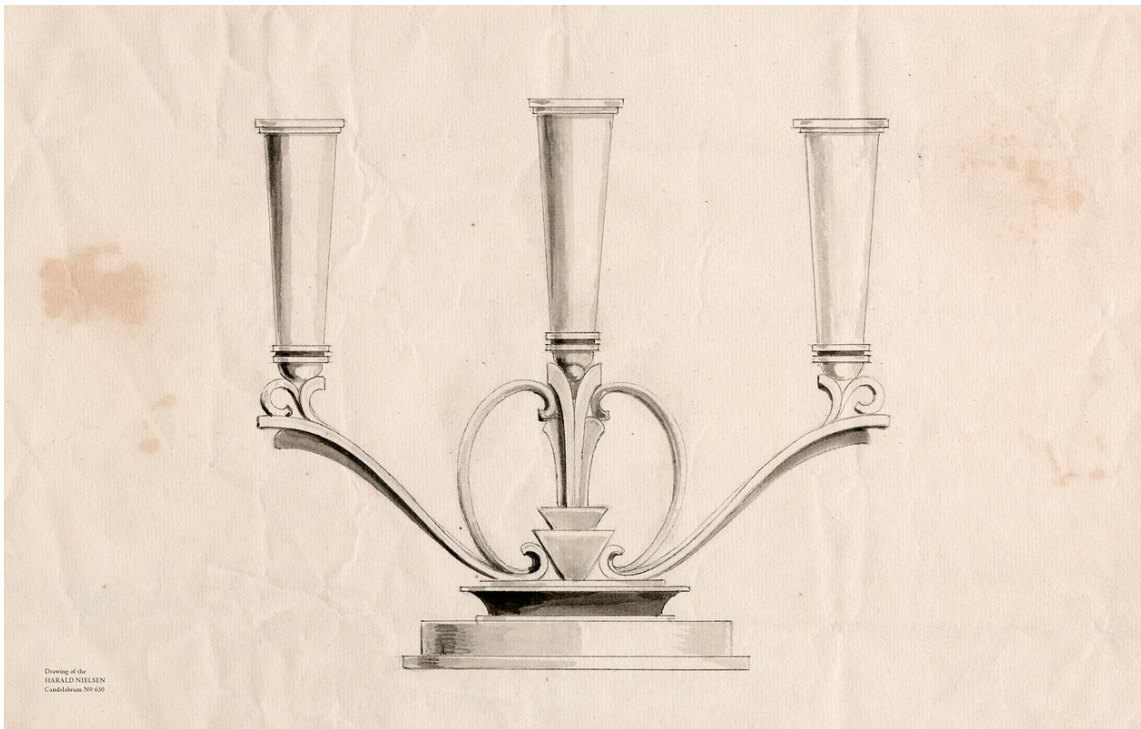


# Art Department



Thomas Loof

# Art Department



Thomas Loof

[www.art-dept.com](http://www.art-dept.com)

# Art Department



Thomas Loof

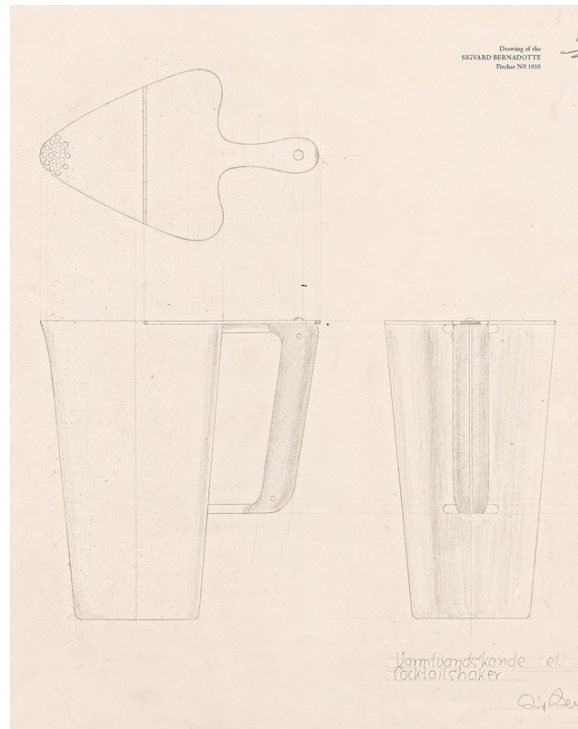
[www.art-dept.com](http://www.art-dept.com)

# Art Department



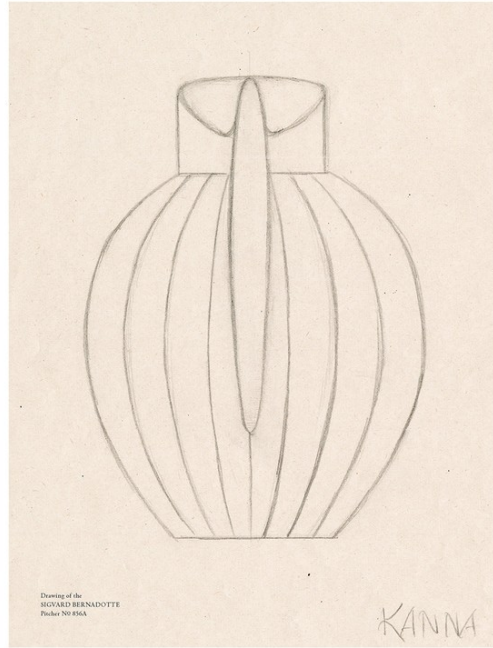
Thomas Loof

# Art Department



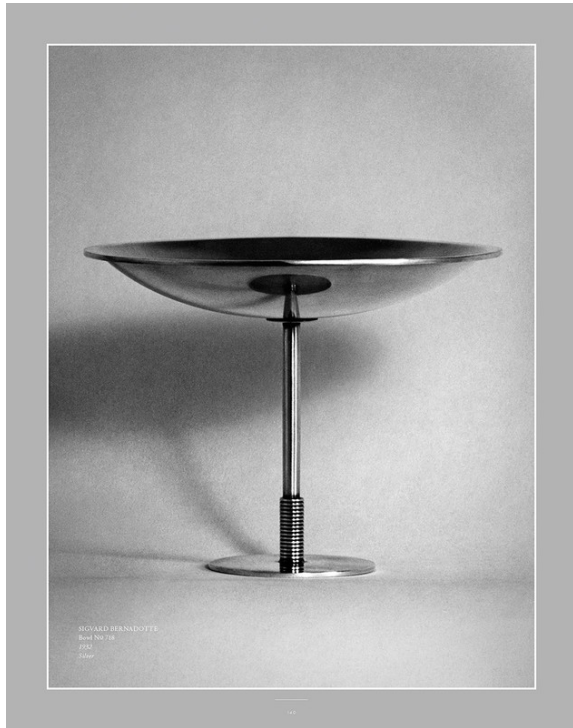
Thomas Loof

# Art Department



Thomas Loof

# Art Department



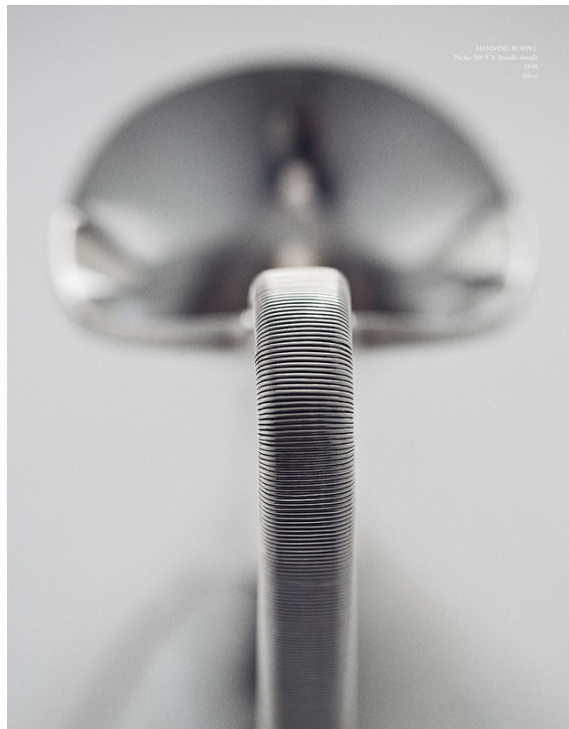
## Thomas Loof

[www.art-dept.com](http://www.art-dept.com)

# Art Department



Drawing of the  
HENNING KOPPEL  
Pitcher N° 978



Thomas Loof

[www.art-dept.com](http://www.art-dept.com)



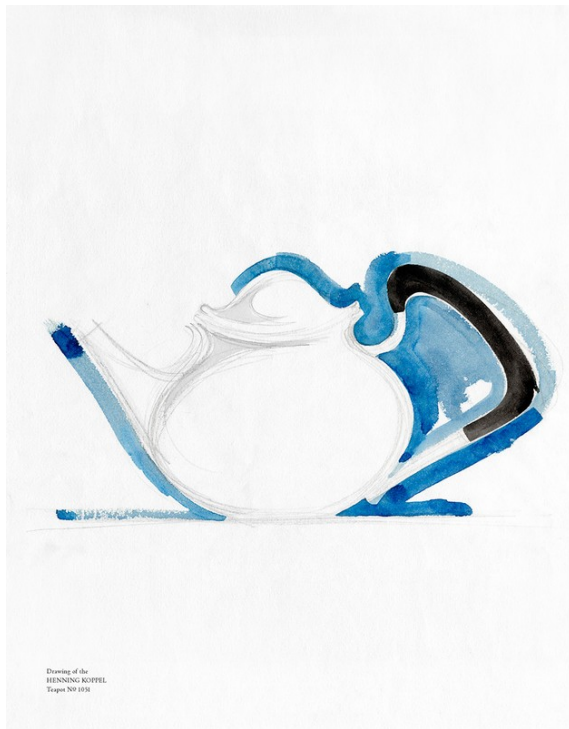
# Art Department



Thomas Loof

[www.art-dept.com](http://www.art-dept.com)

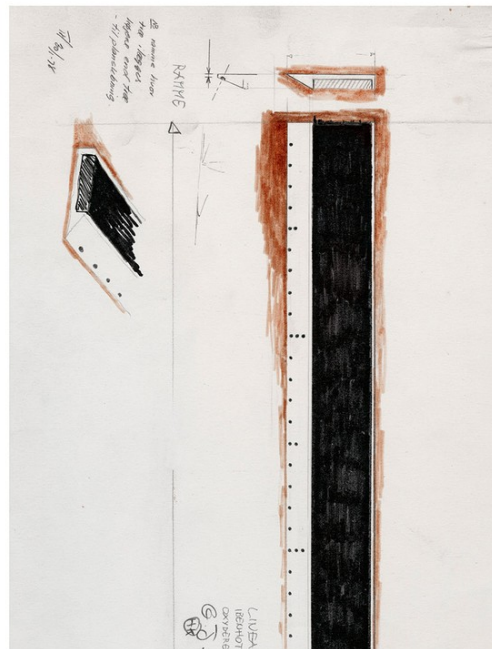
# Art Department



Thomas Loof

[www.art-dept.com](http://www.art-dept.com)

# Art Department



## Thomas Loof

[www.art-dept.com](http://www.art-dept.com)

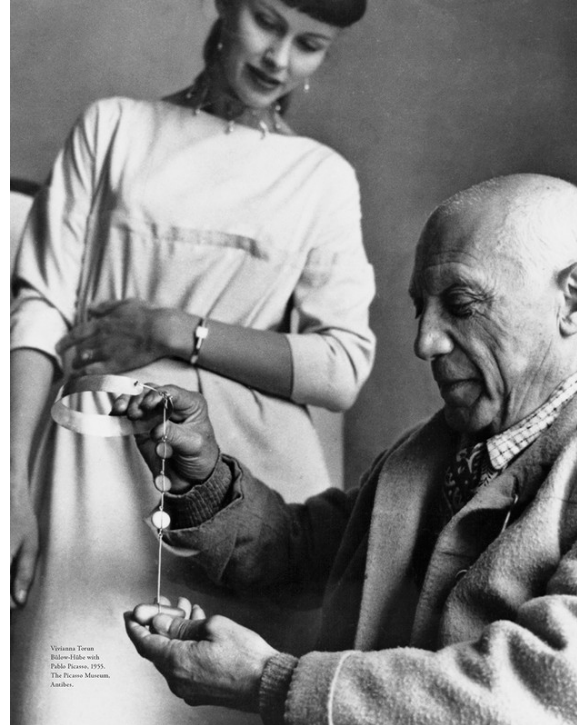
# Art Department



Thomas Loof

[www.art-dept.com](http://www.art-dept.com)

# Art Department



## Thomas Loof

[www.art-dept.com](http://www.art-dept.com)

# Art Department



Thomas Loof

[www.art-dept.com](http://www.art-dept.com)

# Art Department



VIVIANNA TORUN BELOW-HICKE  
Nach Ring with Pendant and Earrings  
VTHI production



VIVIANNA TORUN BELOW-HICKE  
Nach Ring NO 187  
1958  
Edelweiss  
Friedrich NO 135  
2008  
Edelweiss, red crystal, and amber

## Thomas Loof

[www.art-dept.com](http://www.art-dept.com)

# Art Department



Thomas Loof

[www.art-dept.com](http://www.art-dept.com)



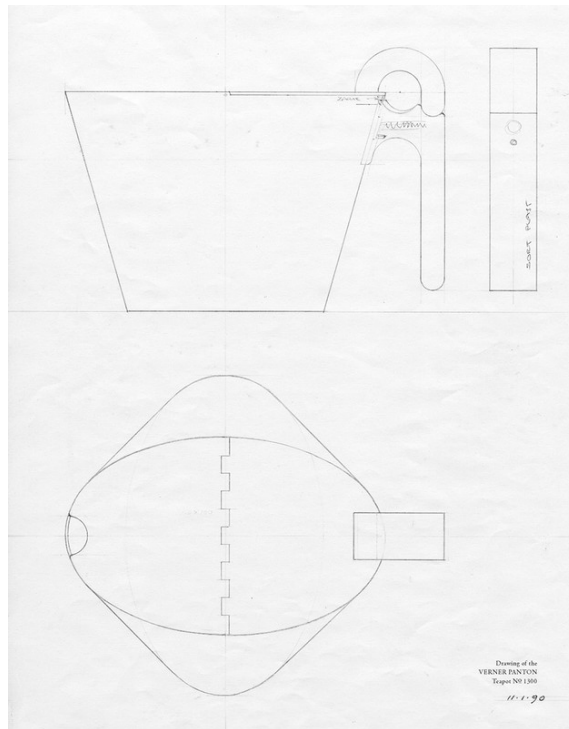
# Art Department



Thomas Loof

[www.art-dept.com](http://www.art-dept.com)

# Art Department



Thomas Loof

# Art Department



Thomas Loof

[www.art-dept.com](http://www.art-dept.com)

# Art Department



Thomas Loof

[www.art-dept.com](http://www.art-dept.com)

# Art Department



Thomas Loof

[www.art-dept.com](http://www.art-dept.com)

# Art Department



Thomas Loof

[www.art-dept.com](http://www.art-dept.com)

# Art Department



Thomas Loof

[www.art-dept.com](http://www.art-dept.com)

# Art Department



## Thomas Loof

[www.art-dept.com](http://www.art-dept.com)



# Art Department



MAGNUS STEPHENSEN  
Cassole No 1411 - detail  
1953  
Silver and ivory  
Opportunities:  
MAGNUS STEPHENSEN  
Frames No 1812  
1952  
Silver and wicker



SANNA DETZEL  
Nockler No 123  
1962  
Silver

## Thomas Loof

[www.art-dept.com](http://www.art-dept.com)

# Art Department



Thomas Loof

[www.art-dept.com](http://www.art-dept.com)

# Art Department



Thomas Loof

[www.art-dept.com](http://www.art-dept.com)

# Art Department



Thomas Loof

[www.art-dept.com](http://www.art-dept.com)