

# Art Department

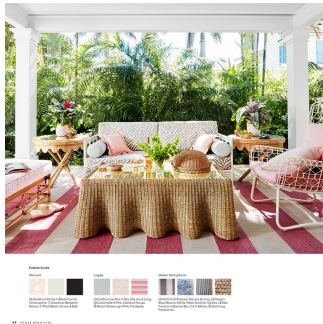


## Thomas Loof

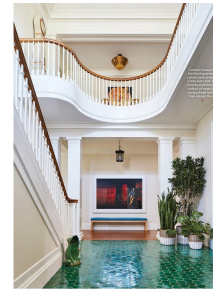
www.art-dept.com



# Art Department



Outdoor designer: "I took a good look at the space and saw the potential for a great outdoor living area. The key was to create a space that was both functional and beautiful. I used a mix of materials and colors to create a space that was both functional and beautiful. I used a mix of materials and colors to create a space that was both functional and beautiful."



Interior designer: "I took a good look at the space and saw the potential for a great outdoor living area. The key was to create a space that was both functional and beautiful. I used a mix of materials and colors to create a space that was both functional and beautiful."



ART COVERS OFTEN DESCRIBE THE ACT of creating a space that is both functional and beautiful. I used a mix of materials and colors to create a space that was both functional and beautiful. I used a mix of materials and colors to create a space that was both functional and beautiful.



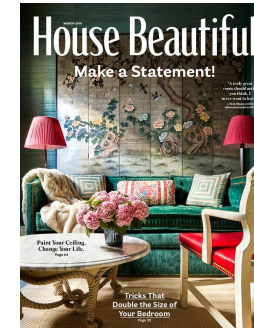
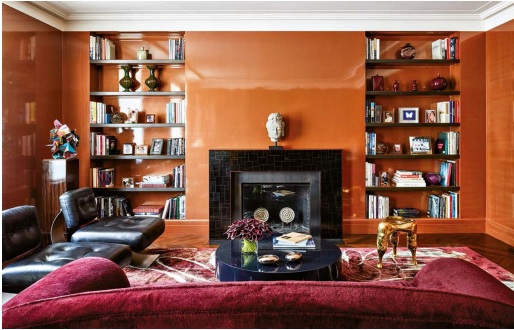
"THE RIGHT MIX DOESN'T LOOK LIKE IT LOOKS COMFORTABLE AND EASY."



## Thomas Loof

www.art-dept.com

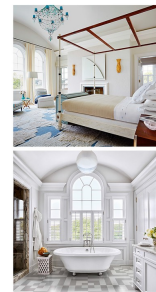
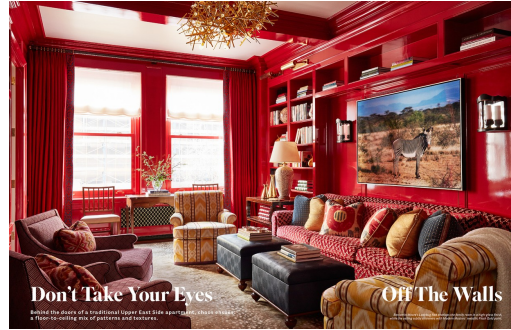
# Art Department



Thomas Loof

[www.art-dept.com](http://www.art-dept.com)

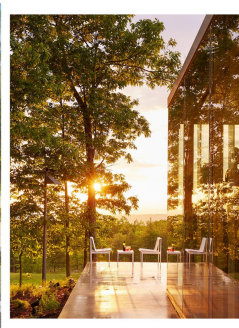
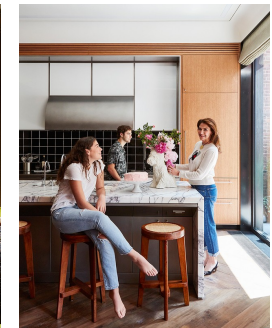
# Art Department



## Thomas Loof

www.art-dept.com

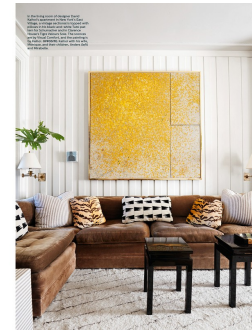
# Art Department



Thomas Loof

[www.art-dept.com](http://www.art-dept.com)

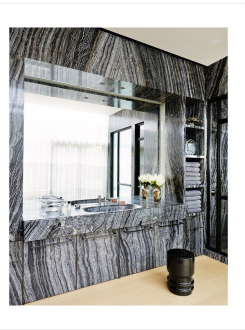
# Art Department



## Thomas Loof

www.art-dept.com

# Art Department

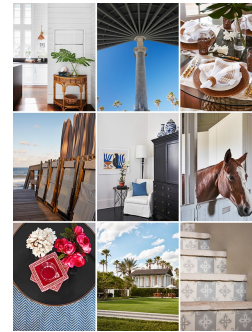
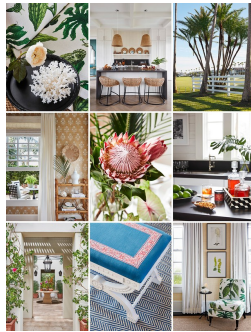


Thomas Loof

[www.art-dept.com](http://www.art-dept.com)



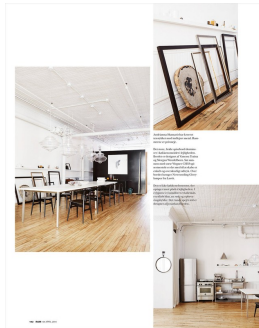
# Art Department



Thomas Loof

[www.art-dept.com](http://www.art-dept.com)

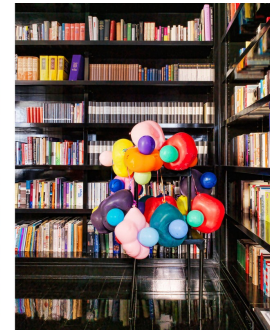
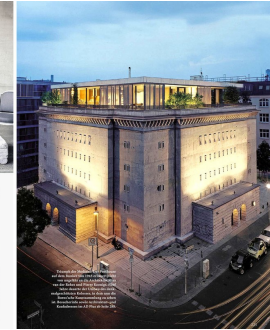
# Art Department



Thomas Loof

[www.art-dept.com](http://www.art-dept.com)

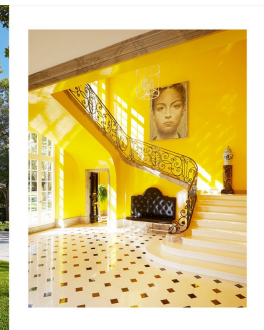
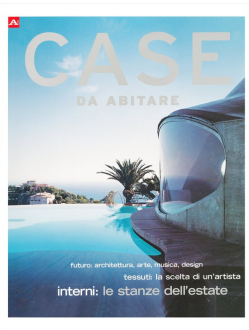
# Art Department



Thomas Loof

[www.art-dept.com](http://www.art-dept.com)

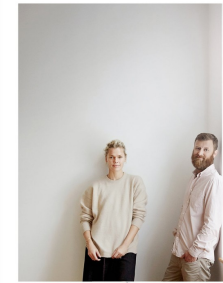
# Art Department



Thomas Loof

[www.art-dept.com](http://www.art-dept.com)

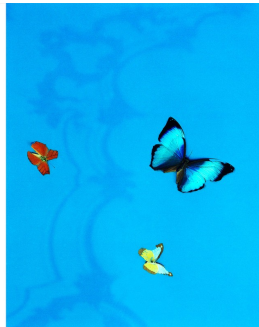
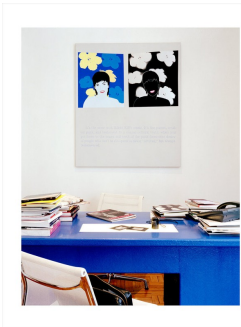
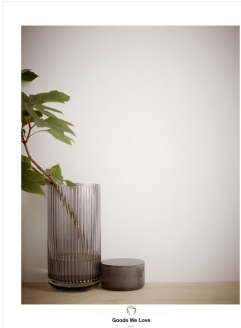
# Art Department



Thomas Loof

[www.art-dept.com](http://www.art-dept.com)

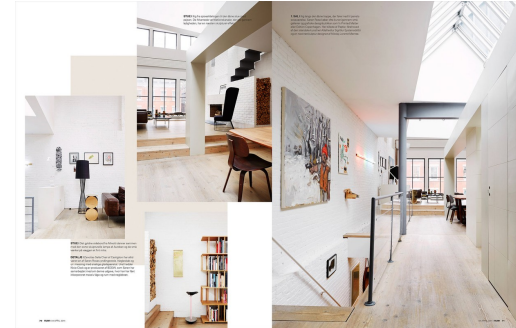
# Art Department



## Thomas Loof

[www.art-dept.com](http://www.art-dept.com)

# Art Department



## Thomas Loof

[www.art-dept.com](http://www.art-dept.com)

# Art Department

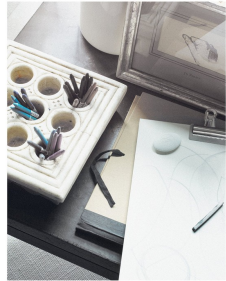


Thomas Loof

[www.art-dept.com](http://www.art-dept.com)



# Art Department



INTERIOR DESIGN  
BY  
THOMAS LOOF

## THE POWER OF PATTERN

BY A PHOTOGRAPHER  
NEW HOUSES & ALL THINGS  
WITH THE PATTERN

THE POWER OF PATTERN  
BY A PHOTOGRAPHER  
NEW HOUSES & ALL THINGS  
WITH THE PATTERN



## SO I'LL NEVER GET TIRDED OF TUSCAN

BY A PHOTOGRAPHER  
NEW HOUSES & ALL THINGS  
WITH THE PATTERN



Where are we?  
Pittsburgh, Pa.  
Lake Como?

We're in Laguna Beach, California, but the house has the feeling of all those other places. The architect, Bob White, did a wonderful job of creating this Italianate character in a way that's eccentric and interesting. His design has the simplicity and serenity of an old agrarian building. I wanted to keep that simplicity.



# Thomas Loof

[www.art-dept.com](http://www.art-dept.com)

# Art Department



# Thomas Loof

www.art-dept.com