

Art Department



Beverley Hyde

www.art-dept.com

Art Department



Beverley Hyde

www.art-dept.com

Art Department



Beverley Hyde

www.art-dept.com

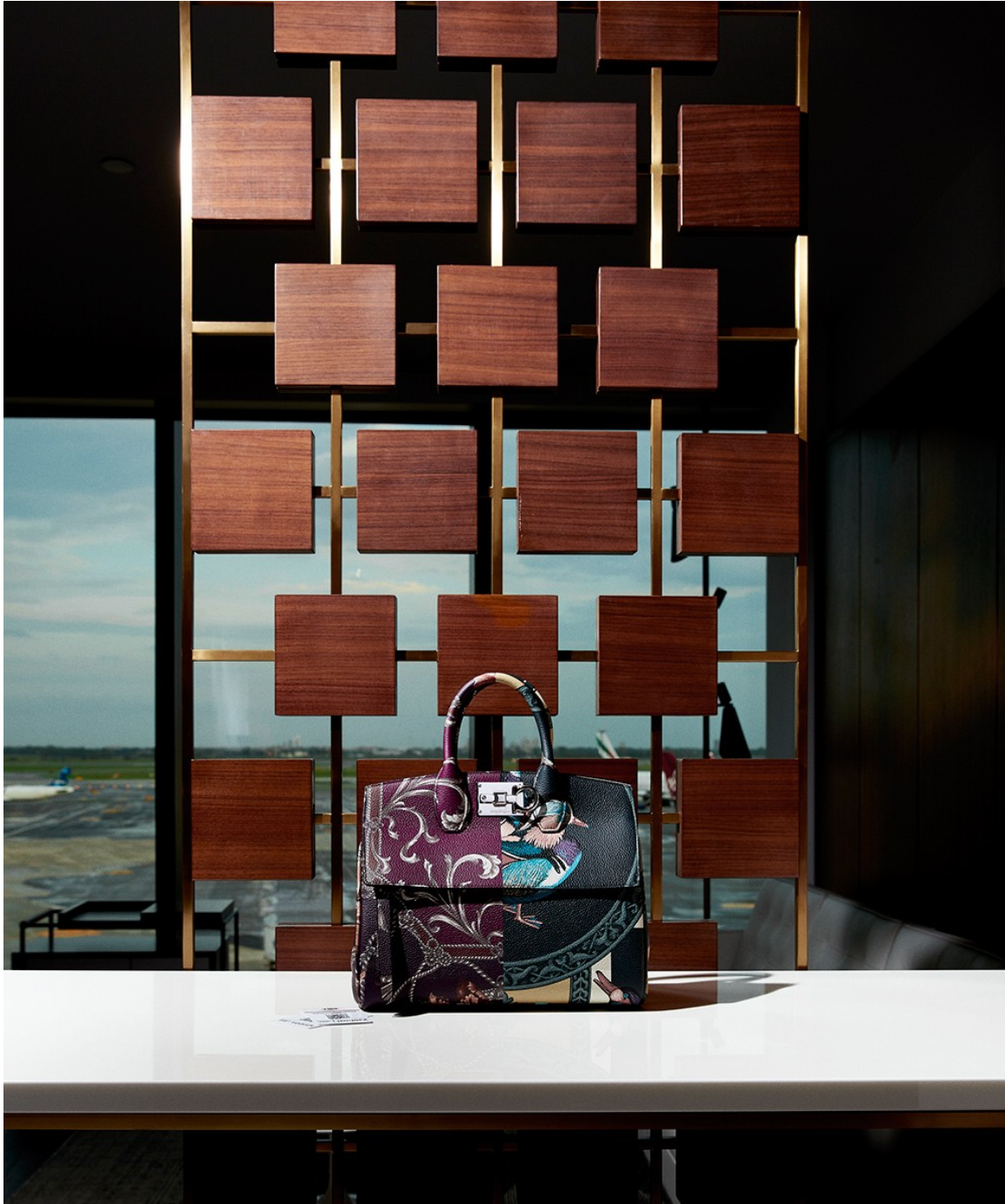
Art Department



Beverley Hyde

www.art-dept.com

Art Department



Beverley Hyde

www.art-dept.com

Art Department



Beverley Hyde

www.art-dept.com

Art Department



Beverley Hyde

www.art-dept.com

Art Department



Beverley Hyde

www.art-dept.com

Art Department



Beverley Hyde

www.art-dept.com

Art Department



Beverley Hyde

www.art-dept.com

Art Department



Beverley Hyde

www.art-dept.com

Art Department



Beverley Hyde

www.art-dept.com

Art Department



Beverley Hyde

www.art-dept.com

Art Department



Beverley Hyde

www.art-dept.com

Art Department



Beverley Hyde

www.art-dept.com

Art Department



Beverley Hyde

www.art-dept.com

Art Department



Beverley Hyde

www.art-dept.com

Art Department



Beverley Hyde

www.art-dept.com

Art Department



Beverley Hyde

www.art-dept.com

Art Department



Beverley Hyde

www.art-dept.com

Art Department



On the Town
STEP INTO REFINEMENT.

Photographs by Robert Tardio

Beverley Hyde

www.art-dept.com

Art Department



Beverley Hyde

www.art-dept.com

Art Department



Beverley Hyde

www.art-dept.com

Art Department



Beverley Hyde

www.art-dept.com

Art Department



64

Black magic

65

Photography
Daniel Lindh

Edit
Taryn Bensky

Black

magic

Heroina - Issue #3

Beverly Hyde

From left - CHRISTIAN DIOR Gris Montaigne Eau de Parfum; boot by DIOR FW15; glove and handbag by BALENCIAGA FW15

Beverly Hyde

www.art-dept.com

Art Department



Beverly Hyde

www.art-dept.com

Art Department



70

Black magic

set design
BEVERLEY
HYDE & MAREK
& ASSOCIATES;
production
BO ZHANG
of MANAGEMENT+
ARTISTS; photo
editorial: NEAL
FRANC and
DAVE CHOW;
set design assistant
SOPHIE LENG

71

Horizon - Issue 13

Emery Drive

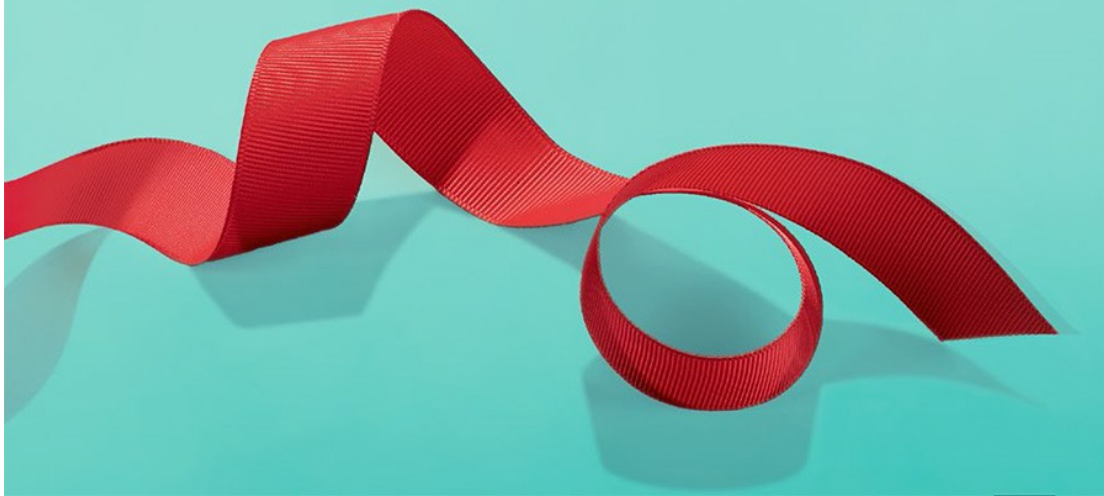
Belt by ALEXANDER McQUEEN FW15; FREDERIC MALLE L'eau d'Hiver Eau de Parfum; BYREDO Loveless fragranced candle; CHANEL Coco Noir Eau de Parfum; handbag and shoe by LOUIS VUITTON FW15

Beverley Hyde

www.art-dept.com

Art Department

A VERY, VERY
TIFFANY HOLIDAY



Beverley Hyde

www.art-dept.com

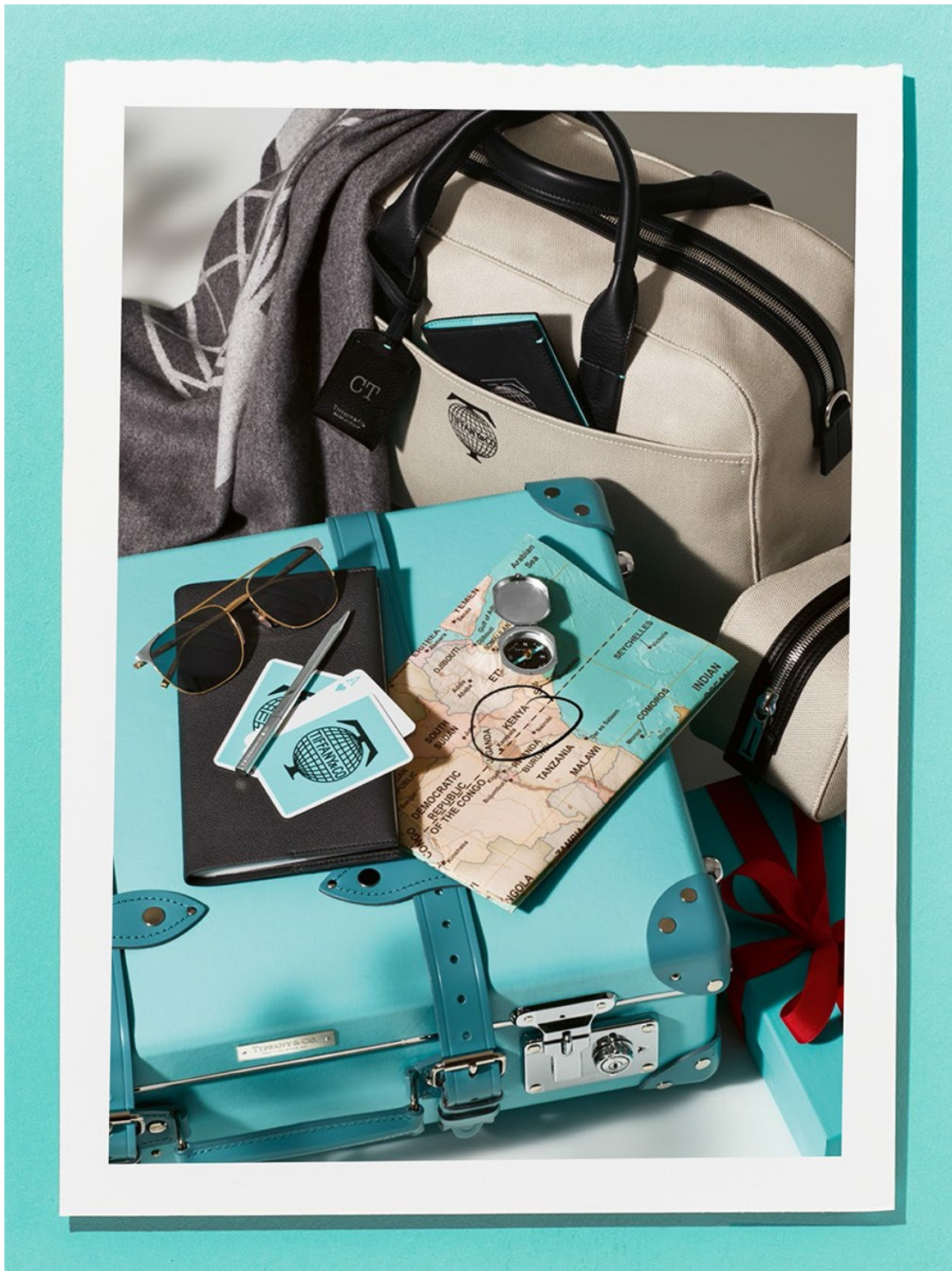
Art Department



Beverly Hyde

www.art-dept.com

Art Department



Beverley Hyde

www.art-dept.com

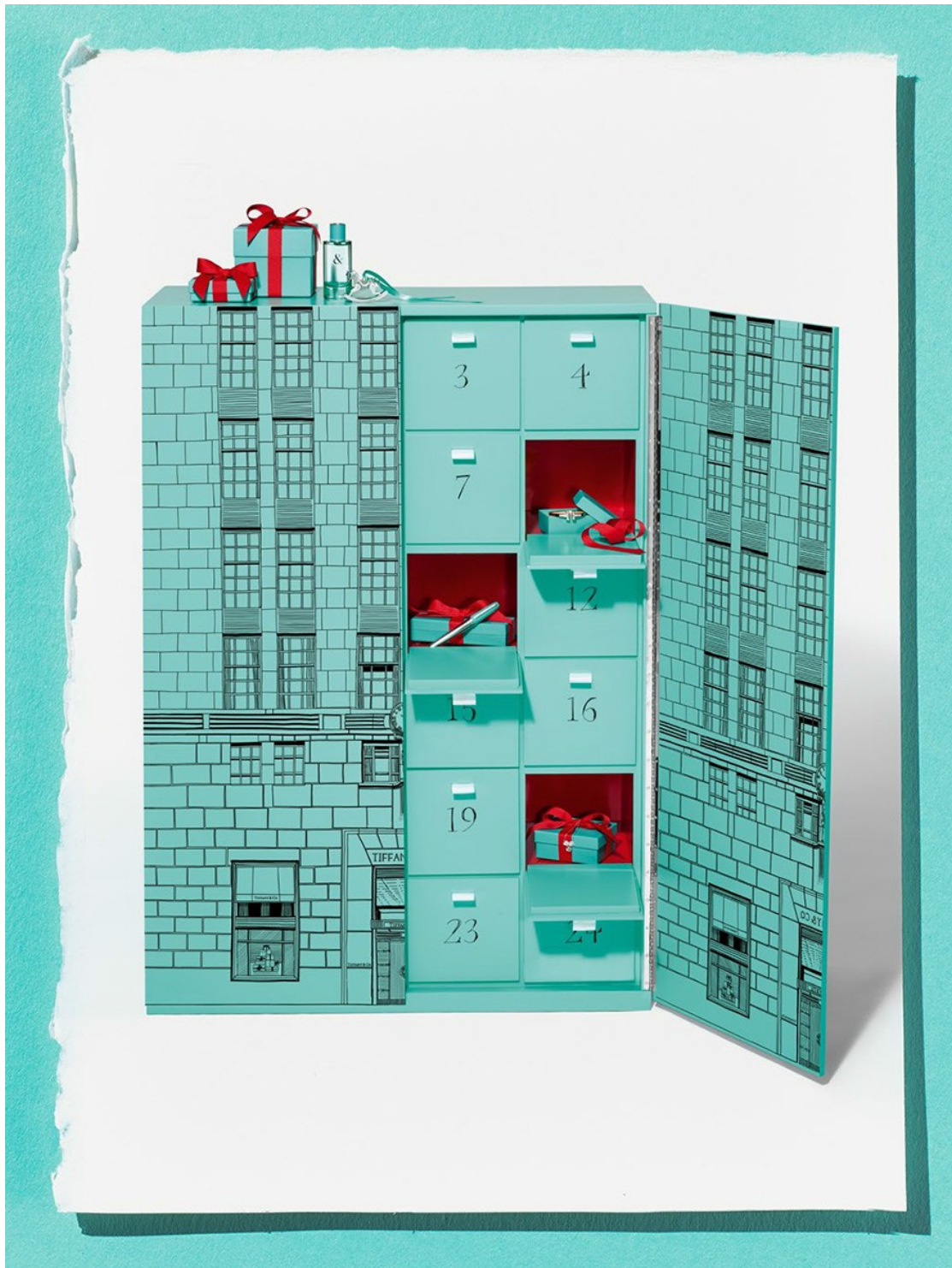
Art Department



Beverley Hyde

www.art-dept.com

Art Department



Beverley Hyde

www.art-dept.com

Art Department

ACCESSORIES

Leather clutch, SERGIO ROSSI, \$1,395, at Sergio Rossi, Las Vegas. Suede sandal, SALVATORE FERRAGAMO, price on request, visit salvatoreferragamo.com



Svend Lindeboek (Styled by Beverley Hyde at Marell & Associates); for details, see Shopping Guide

OVER THE RAINBOW

Toss out the old rules governing evening attire. You can wear any color—or all of them at once

EDITED BY MARIA DUEÑAS JACOBS

ELLE 169

Beverley Hyde

www.art-dept.com

Art Department

ACCESSORIES

CRAFT SERVICES

Traditional embroideries from points East and West add a worldly touch to espadrilles and carryalls

Embroidered handbag, THE ROW, price on request, at The Row, L.A.

From top: Embroidered-velvet espadrille, GIUSEPPE ZANOTTI DESIGN, \$695, visit giuseppezanottidesign.com; Embroidered-canvas espadrille, SERGIO ROSSI, \$1,125, at Sergio Rossi, Las Vegas



Svend Lindegaard (Styler by Beverley Hyde at Marella) / Aspacobase for details, see Shopping Guide

ELLE 173

Beverley Hyde

www.art-dept.com

Art Department

ACCESSORIES

ELLE EXCLUSIVE

BLUE CRUSH

Coach serves up a true-blue, superluxe homage to its all-American roots

Leather and python handbag, COACH, \$1,200, at select Coach stores nationwide

It's been 75 years since a certain small family-owned Manhattan workshop started making sturdy cowhide purses inspired by the soft leather of baseball mitts. Coach went on to make an indelible mark on American style via the colorful leathers and clean shapes first introduced by Bonnie Cashin in the '60s. Now it's going one step further with creative director Stuart Vevers's upscale range, Coach 1941, including this luxurious bag created just for ELLE, which marries glove-tanned pebble leather with exotic touches like python straps for a new, relaxed luxury. Looks like a home run to us.

284 | 1117

Svend Lindbole (prop styling by Beverley Hyde for Mores & Associates); for details, see Shopping Guide

Beverley Hyde

www.art-dept.com

Art Department

ACCESSORIES

GEM DANDY

Bulgari pulls out all the stops with a pair of Byzantine-inspired beauties



Embellished-python handbag; rose gold, diamond, emerald, and sapphire necklace, both, BULGARI, prices on request, call 800-BULGARI

270 E1

Svend Lindbolev (prop styling by Beverley Hyde for Maxwell & Associates); for details, see Shopping Guide

Beverley Hyde

www.art-dept.com

Art Department



Beverley Hyde

www.art-dept.com

Art Department



Beverley Hyde

www.art-dept.com

Art Department



Beverley Hyde

www.art-dept.com

Art Department



Beverley Hyde

www.art-dept.com

Art Department



Beverley Hyde

www.art-dept.com

Art Department



Beverley Hyde

www.art-dept.com

Art Department



Beverley Hyde

www.art-dept.com

Art Department



Beverley Hyde

www.art-dept.com

Art Department



Beverly Hyde

www.art-dept.com

Art Department



Beverley Hyde

www.art-dept.com

Art Department



Beverley Hyde

www.art-dept.com

Art Department



Beverley Hyde

www.art-dept.com

Art Department



Beverley Hyde

www.art-dept.com

Art Department



Beverley Hyde

www.art-dept.com

Art Department



Beverley Hyde

www.art-dept.com

Art Department



Beverley Hyde

www.art-dept.com

Art Department



Beverley Hyde

www.art-dept.com

Art Department



Beverley Hyde

www.art-dept.com

Art Department



Beverley Hyde

www.art-dept.com

Art Department



Beverley Hyde

www.art-dept.com

Art Department



Beverley Hyde

www.art-dept.com

Art Department



Beverley Hyde

www.art-dept.com

Art Department



Beverley Hyde

www.art-dept.com

Art Department



Beverley Hyde

www.art-dept.com

Art Department



Beverley Hyde

www.art-dept.com

Art Department



Beverley Hyde

www.art-dept.com

Art Department



Beverley Hyde

www.art-dept.com

Art Department



Beverley Hyde

www.art-dept.com

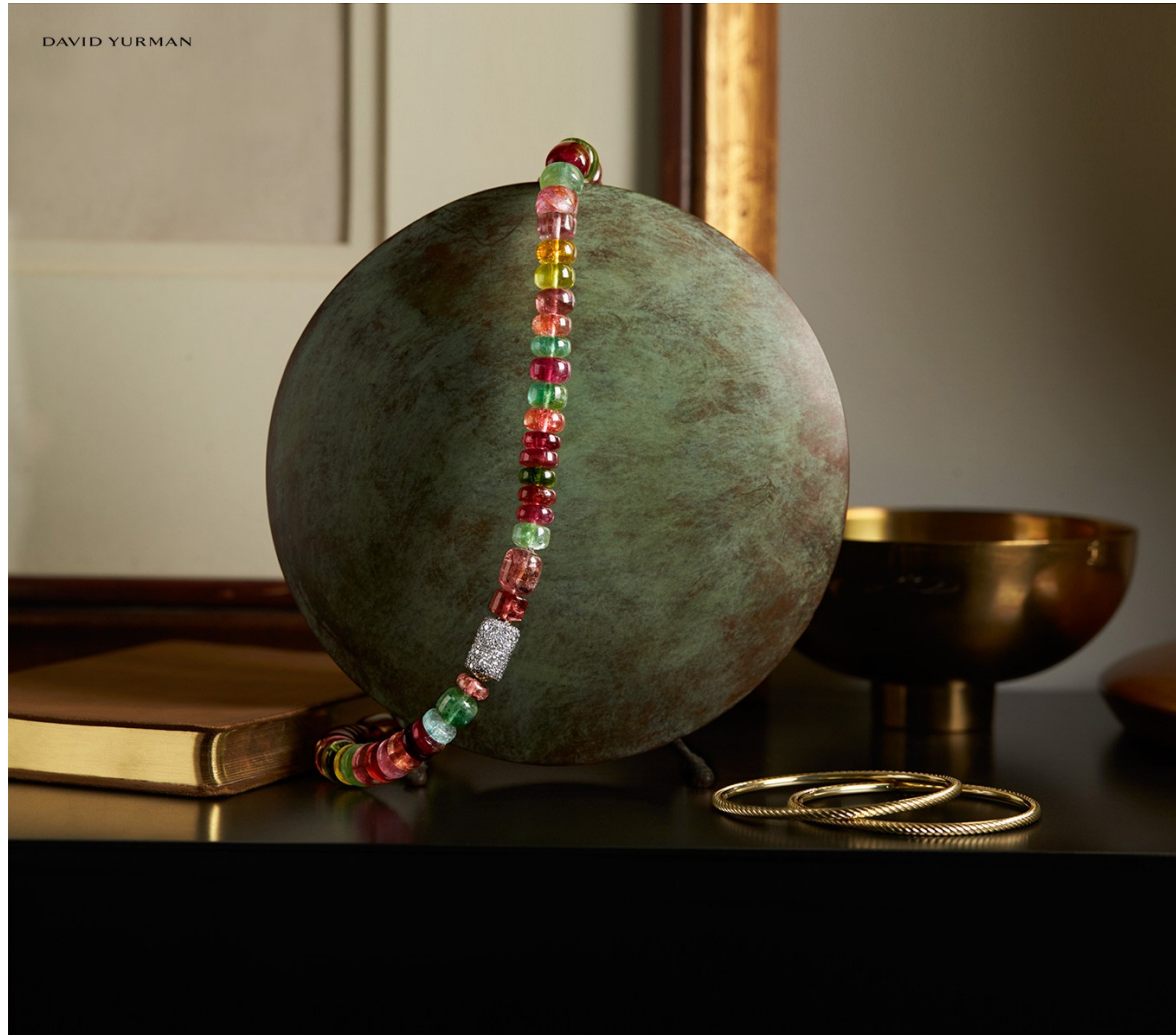
Art Department



Beverley Hyde

www.art-dept.com

Art Department



Beverley Hyde

www.art-dept.com

Art Department



DAVID YURMAN

Beverley Hyde

www.art-dept.com

Art Department



Beverley Hyde

www.art-dept.com

Art Department



Beverley Hyde

www.art-dept.com

Art Department



Beverley Hyde

www.art-dept.com

Art Department



Beverley Hyde

www.art-dept.com

Art Department

CHALK FRENCH CALF CLUTCH \$995



Calvin Klein
collection

654 MADISON AVENUE NEW YORK 212.292.9000 calvinkleincollection.com

Beverley Hyde

www.art-dept.com

Art Department



Beverley Hyde

www.art-dept.com

Art Department

on solid
GROUND

The landscape always changes. But the shoes?
They're your bedrock. Pick a pair that nails the base elements,
in a finish you wouldn't want to walk around without.

GUCCI
Black leather slip-on
with bamboo heel
detail. \$620. Men's
Shoes. Select stores.

BLOOMINGDALES.COM 37

Beverley Hyde

www.art-dept.com

Art Department



Beverley Hyde

www.art-dept.com

Art Department



GORDON RUSH

Dark brown leather cap-toe lace-up, also in black, \$265. Brandy wingtip lace-up, also in black, \$265. Men's Shoes. Wingtip in select stores.

MARCH 13-23
**TRIPLE
POINTS**
FOR EVERYONE
ON EVERYTHING®

BLOOMINGDALES.COM 43

Beverley Hyde

www.art-dept.com

Art Department



**SALVATORE
FERRAGAMO**
Brown/cream leather
two-tone loafer, \$595.
Brown python bit
loafer, \$1,250.
Men's Shoes. Bit loafer
at 59th Street and
Aventura only.

Beverly Hyde

www.art-dept.com

Art Department



CHURCH'S

Navy/white leather
wingtip spectator
lace-up, \$525.
Men's Shoes.
Select stores.

MARCH 13-23
**TRIPLE
POINTS**
FOR EVERYONE
ON EVERYTHING™

38 BEST OF MEN'S

Beverley Hyde

www.art-dept.com

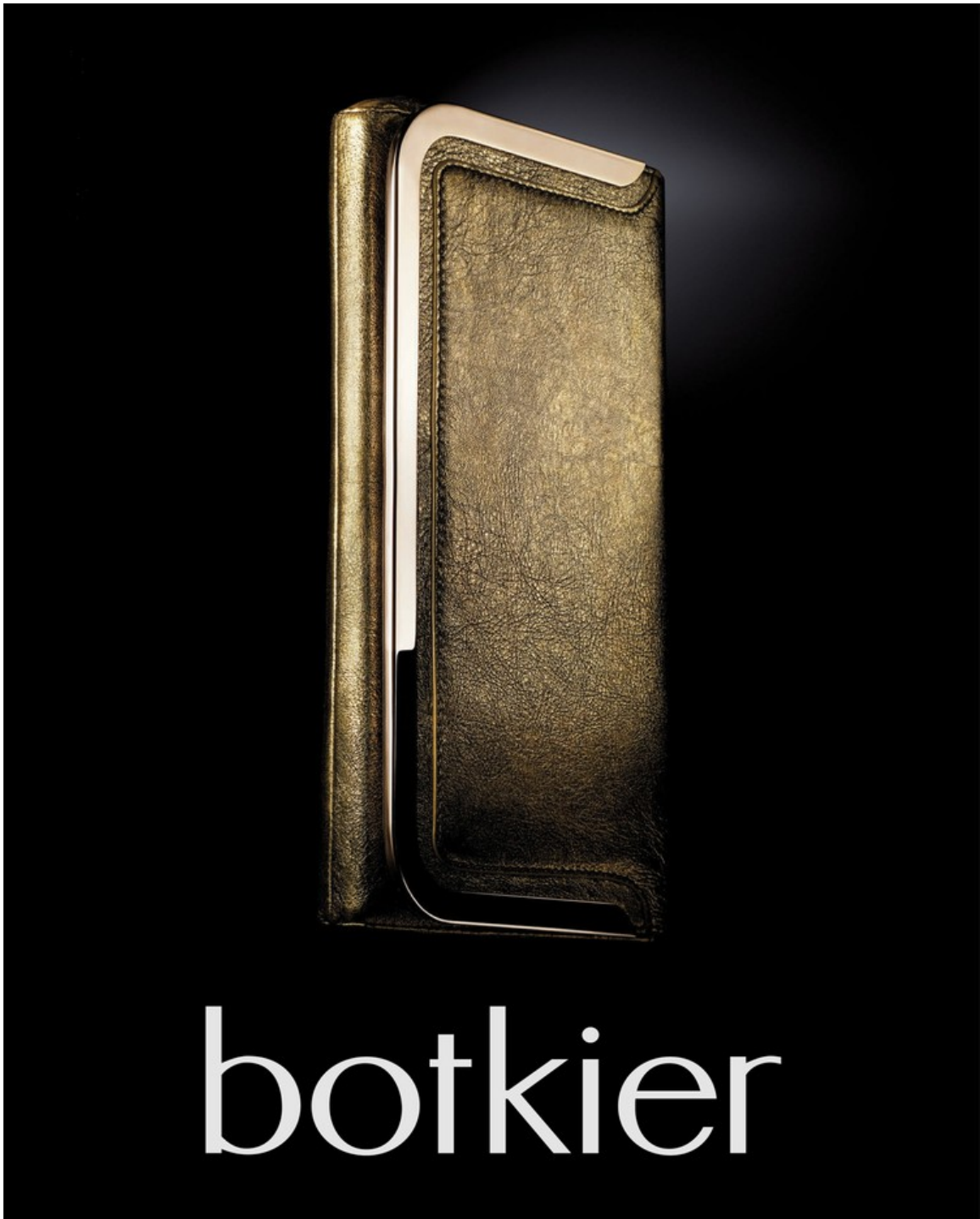
Art Department



Beverley Hyde

www.art-dept.com

Art Department



Beverley Hyde

www.art-dept.com

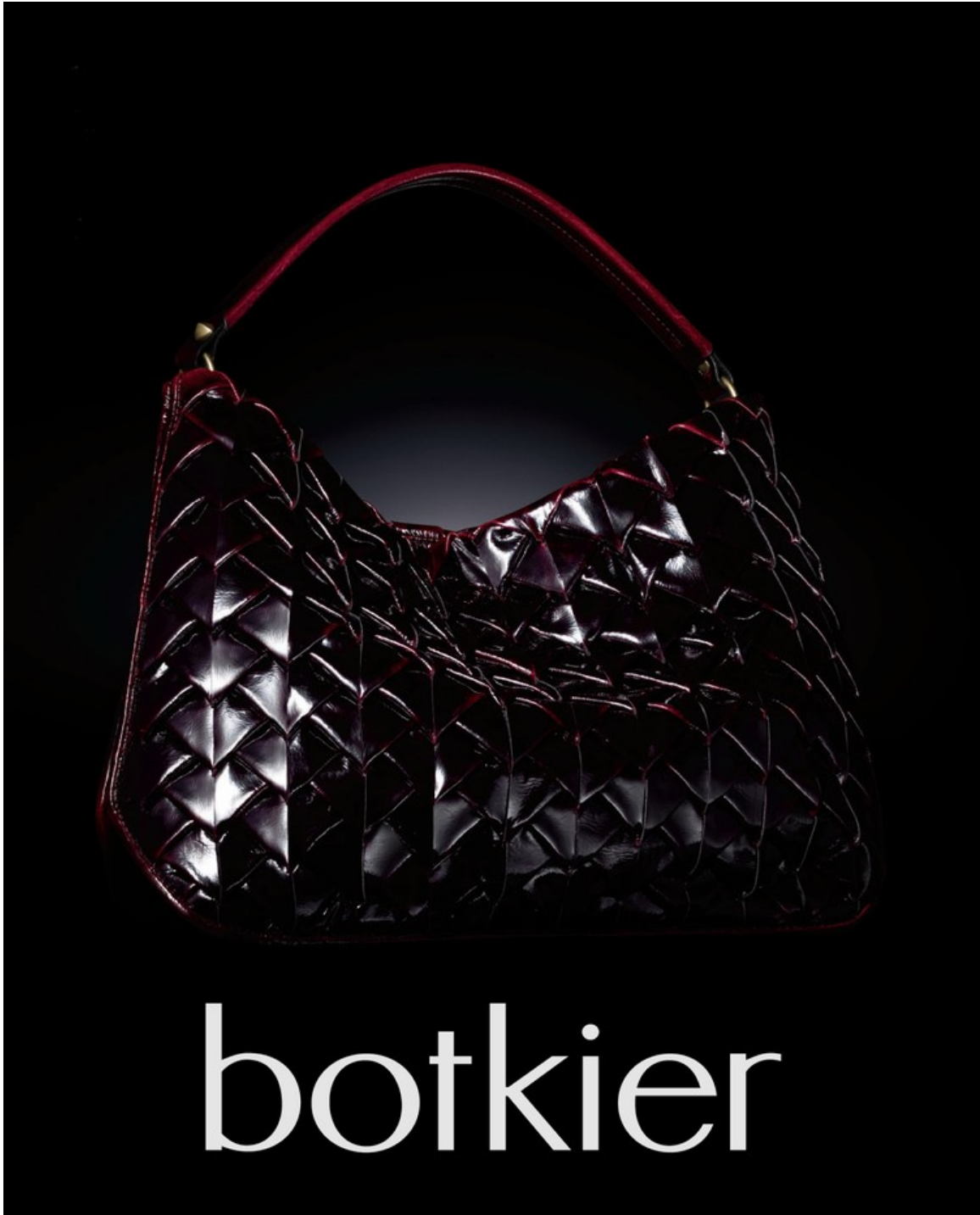
Art Department



Beverley Hyde

www.art-dept.com

Art Department



botkier

Beverley Hyde

www.art-dept.com

Art Department



Beverley Hyde

www.art-dept.com

Art Department



DAVID YURMAN

Beverley Hyde

www.art-dept.com

Art Department



Beverley Hyde

www.art-dept.com

Art Department



Beverley Hyde

www.art-dept.com

Art Department



Beverley Hyde

www.art-dept.com

Art Department



Beverley Hyde

www.art-dept.com

Art Department



STILL LIFE Left to right: Lisa sandal, \$248, Cole Haan. Nudist sandal, \$398, Stuart Weitzman. Christian Louboutin So Kate pump, \$675, available at Neiman Marcus and Saks Fifth Avenue. Sandal bootie, \$1,450, Salvatore Ferragamo. Runway ankle boot, \$775, Emporio Armani. Ina Korda lace-up bootie, \$795, available at Intermix. Patent leather pump with ankle strap, \$625, Emporio Armani. Patent open-toe heel, \$1,780, Louis Vuitton. Queen pump, \$375, Stuart Weitzman.

MASTERPIECES

ACCESSORIZING BECOMES AN ART FORM WITH OUR CAREFULLY CURATED COLLECTION OF FOOTWEAR, TIMEPIECES, AND JEWELRY

PHOTOGRAPHY BY PATRICIA HEAL STYLING BY CANNON SET STYLING BY BEVERLEY HYDE

162 SOMERSET COLLECTION HOLIDAY 2014

SOMERSET COLLECTION HOLIDAY 2014 163

Beverley Hyde

www.art-dept.com

Art Department



STELLA MCCARTNEY

Part of the label's Falabella collection, known for its iconic chain link trim and lengthy roster of A-list fans, this convertible design was made for cool girls on the go. Featuring an optional strap, this three-in-one wonder can be carried as a wallet, clutch or crossbody. Of course we had to put our own stamp on the style: We were enamored by the chic, Only Ours faux-snakeskin print that's both ultra-luxe and everyday-neutral. But you'll have to be quick to get your hands on this limited edition—only 100 will be available at select Bloomingdale's locations or by special order.

STELLA MCCARTNEY
Bronze faux-snakeskin Falabella wallet on chain, \$715.
Cul de Sac Handbags. Select stores.

100%

Beverley Hyde

www.art-dept.com

Art Department



ALEXANDER WANG

Just when we thought we couldn't be any more obsessed with the label's best-selling Abby sandal—marked by its signature notched heel with metal detailing—we had the amazing opportunity to give the day-to-play style a distinctively Bloomingdale's spin. After going back and forth with the design team, we landed on this edgy-meets-glam iteration tricked out with all-over dome studs—we love the way the silver hardware shines against sumptuous suede. Only 150 (insanely perfect) pairs are available in select stores and online.

Black suede studded Abby sandal, \$595.
Designer Shoe Salon. Select stores.

100%

Beverly Hyde

www.art-dept.com

Art Department



Beverley Hyde

www.art-dept.com

Art Department



Beverley Hyde

www.art-dept.com

Art Department



Beverley Hyde

www.art-dept.com

Art Department



Beverley Hyde

www.art-dept.com

Art Department



Beverley Hyde

www.art-dept.com

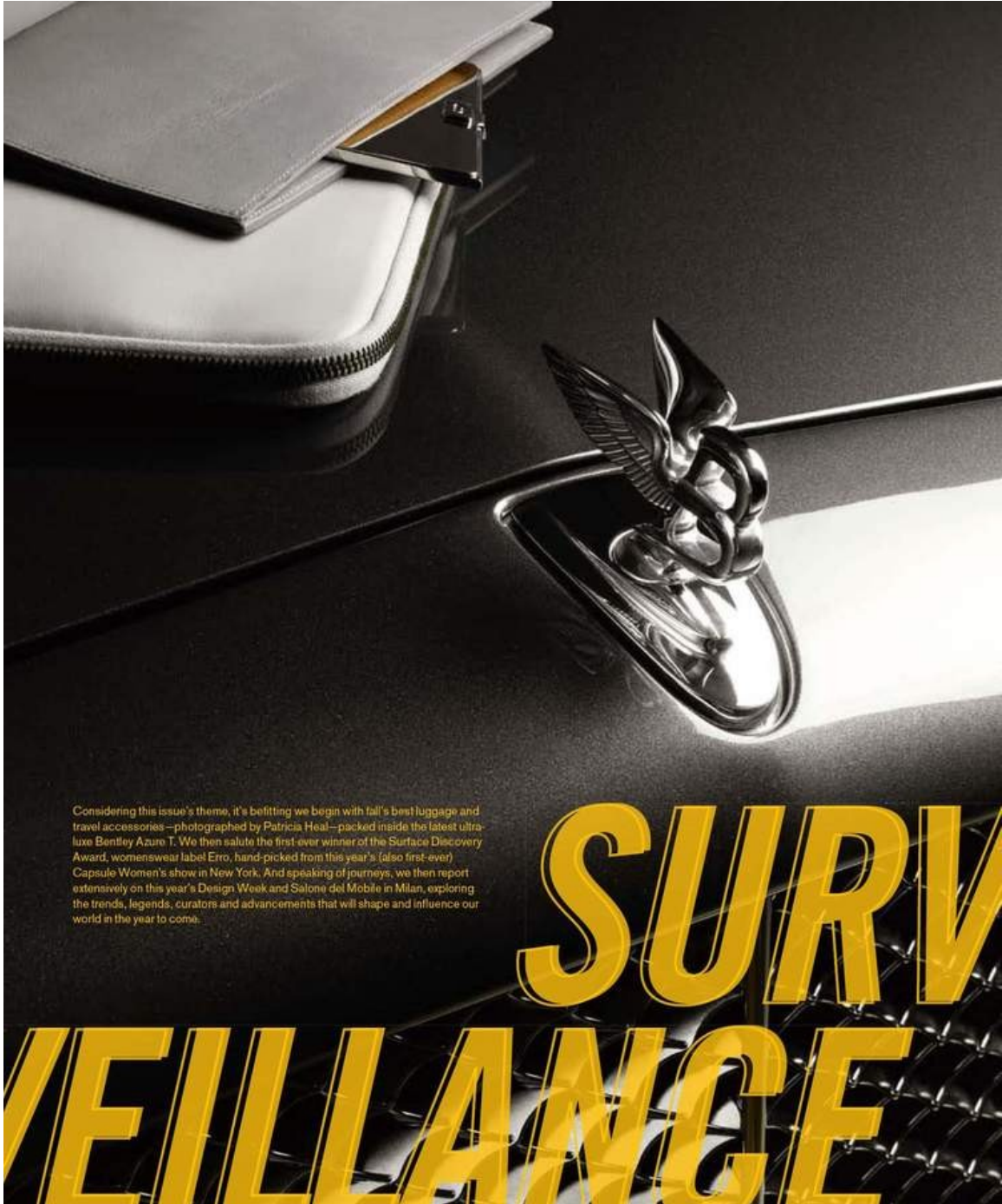
Art Department



Beverley Hyde

www.art-dept.com

Art Department



Considering this issue's theme, it's befitting we begin with fall's best luggage and travel accessories—photographed by Patricia Heal—packed inside the latest ultra-luxe Bentley Azure T. We then salute the first-ever winner of the Surface Discovery Award, womenswear label Erro, hand-picked from this year's (also first-ever) Capsule Women's show in New York. And speaking of journeys, we then report extensively on this year's Design Week and Salone del Mobile in Milan, exploring the trends, legends, curators and advancements that will shape and influence our world in the year to come.

Beverley Hyde

www.art-dept.com

Art Department

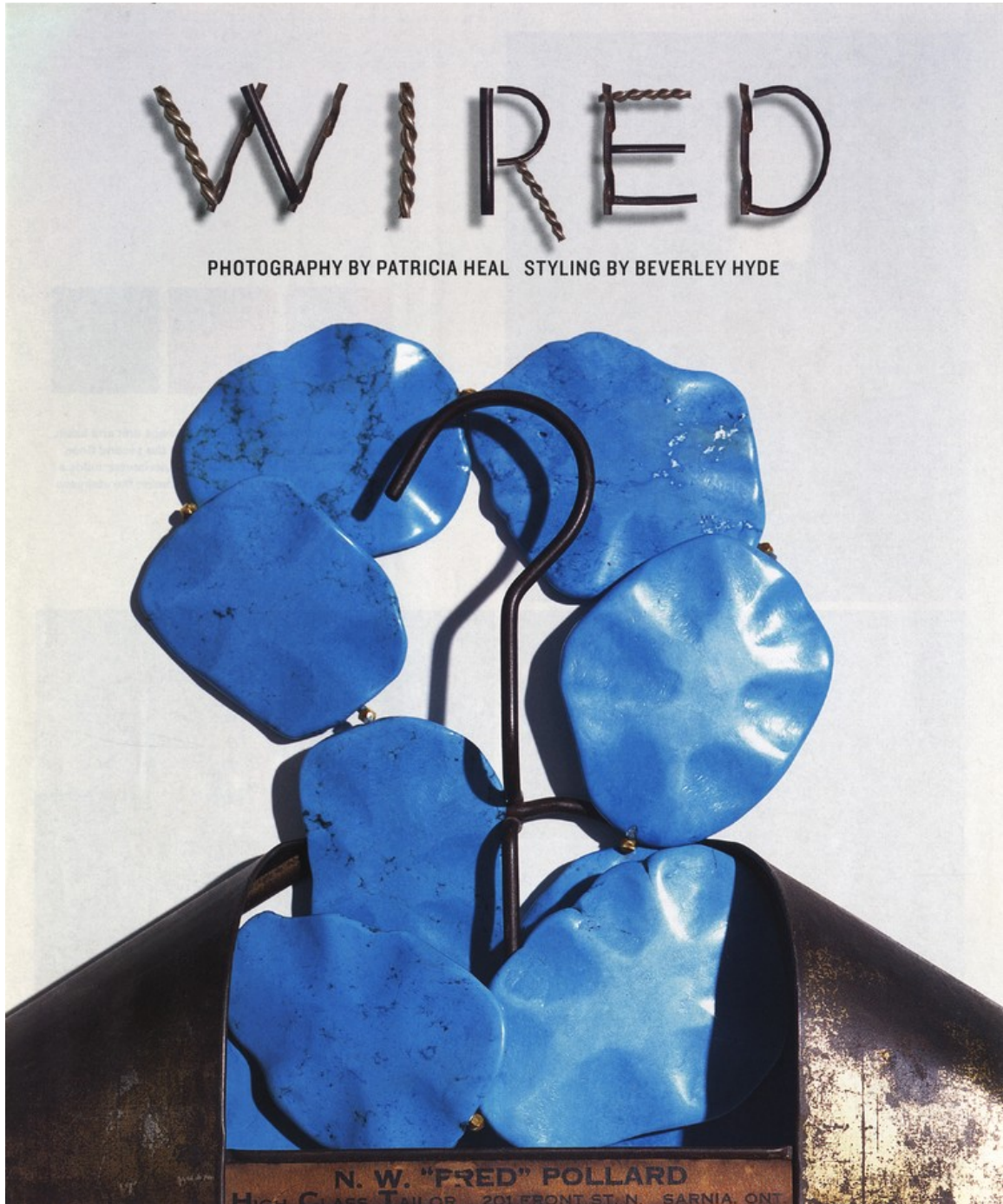


ART DIRECTOR: CHRISTOPHER MOZSARY; PHOTOGRAPHER: PATRICIA HEAL; STYLIST: BEVERLEY HYDE; FASHION EDITOR: GREGORY WEIN; DIGITAL TECH/PHOTO ASSISTANT: SASHA MASLOV; SPECIAL THANKS: WALTER D'URSO AT MANHATTAN MOTORCARS

Beverley Hyde

www.art-dept.com

Art Department



Beverley Hyde

www.art-dept.com

Art Department

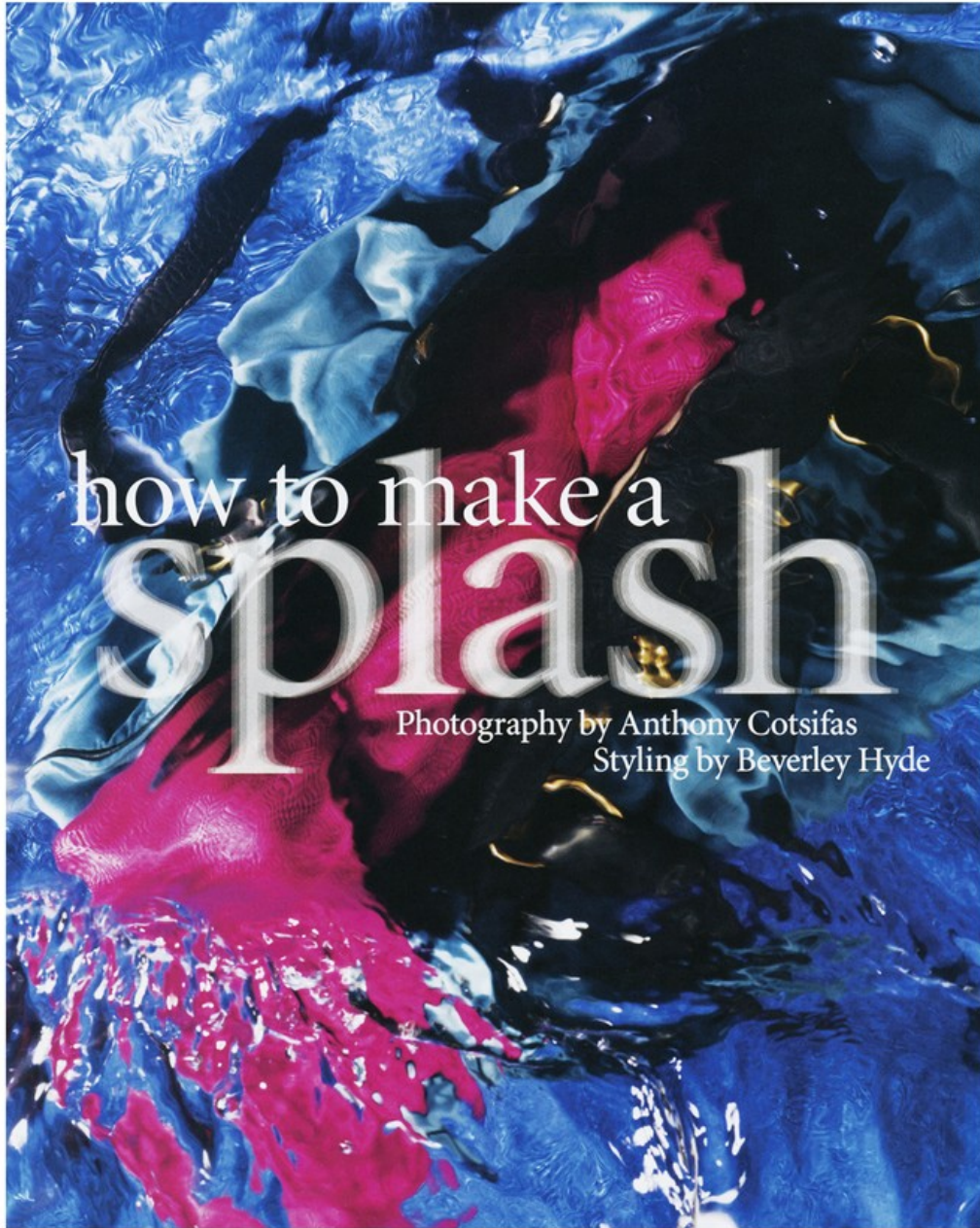


This page: Turquoise, gold, and sterling-silver ring, \$770, by **Nava Zahavi**, at **Fragments**; silk tie, \$159, by **Paul Smith**. Opposite: Turquoise and gold necklace, \$395, by **Marisa Perry Atelier**.

Beverley Hyde

www.art-dept.com

Art Department



Beverley Hyde

www.art-dept.com

Art Department



Beverley Hyde

www.art-dept.com

Art Department

HUCKLEBERRY FINN

Michael Kors's menswear seems to capture perfectly Mark Twain's all-American spirit, albeit accessorized with a few elegant touches—note the **Hermès** silk losange (\$345). **Michael Kors** washed-cotton shirt (\$295), hand-dyed linen sarong (\$395) and cross-strap sandal (price upon request). Boxwood-handled utility knife from **AERO** (\$85). First edition of *Huckleberry Finn* (\$4,500).



114

PROP STYLING BY BEVERLEY HYDE. PREVIOUS SPREAD: ILLUSTRATION BY MATT COLLINS

Beverley Hyde

www.art-dept.com

Art Department



ON THE ROAD

The early Beat Generation—those “children of the American bop night”—loosened cultural barriers while dressing relatively buttoned up. Add some jazz to your wardrobe with a Burberry Prorsum polka-dot skinny tie (\$195) and slim-fit dress shirt (\$295), and a Burberry Brit calfskin leather jacket (\$1,095). Rolex Oyster Perpetual Explorer (\$6,200). First edition of *On the Road* (\$6,500); all books from Imperial Fine Books. For details, go to page 125.

Beverley Hyde

www.art-dept.com

Art Department



MOBY DICK
The great seafaring epic inspired us to think nautically this summer. **Bottega Veneta** lamb duffel (\$2,450). **Phineas Cole** patch-pocket sweater (\$1,090). **Vince** striped crewneck (\$225). **Giorgio Armani** boat shoes (\$330). **Corum** Admiral's Cup Legend 42 watch (\$5,800). Natural horn-handled magnifying glass from **AERO** (\$95). First trade edition of *Moby Dick* (\$1,500).

Beverley Hyde

www.art-dept.com

Art Department



The Summer Ankle Boot

On the one foot, you've got the chukka, a welted, lightweight, and slightly dressy ankle boot named for its resemblance to the footwear worn by old-time polo players. On the other: the softer, more flexible desert boot, which has its origins in the loosely structured, crepe-soled, ankle-high boots worn by the British army in North Africa in World War II. Between the two, you've got two quintessential summer boots that offer the minimum of encumbering structure. They typically come in brown suede, yet the season's best iterations—like these from Kenneth Cole and Shipley & Halmos—explore other areas of the spectrum.

Bottom: Suede chukka boots (\$198) by Kenneth Cole; kenethcole.com. Top: Suede desert boots (\$205) by Shipley & Halmos; shipley-halmos.com.

Beverley Hyde

www.art-dept.com