

Art Department



Beverley Hyde

www.art-dept.com

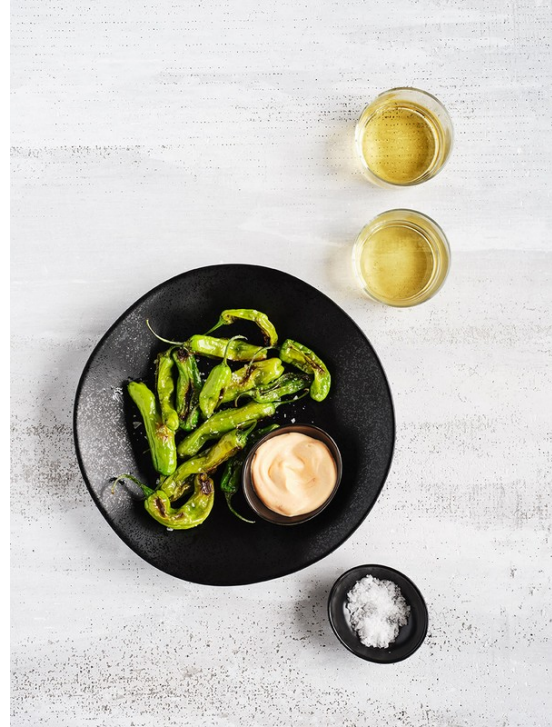
Art Department



Beverley Hyde

www.art-dept.com

Art Department



Beverley Hyde

www.art-dept.com

Art Department



Beverley Hyde

www.art-dept.com

Art Department



Beverley Hyde

www.art-dept.com

Art Department



Beverley Hyde

www.art-dept.com

Art Department



Beverley Hyde

www.art-dept.com

Art Department



Beverley Hyde

Art Department



Beverley Hyde

www.art-dept.com

Art Department



Beverley Hyde

www.art-dept.com

Art Department



Beverley Hyde

www.art-dept.com

Art Department



Beverley Hyde

www.art-dept.com

Art Department



Beverley Hyde

Art Department



Beverley Hyde

www.art-dept.com

Art Department



Beverley Hyde

www.art-dept.com

Art Department



Beverley Hyde

www.art-dept.com

Art Department



Beverley Hyde

www.art-dept.com

Art Department



Beverley Hyde

www.art-dept.com

Art Department



Beverley Hyde

www.art-dept.com

Art Department



Beverley Hyde

www.art-dept.com

Art Department



Beverley Hyde

www.art-dept.com

Art Department



Beverley Hyde

www.art-dept.com

Art Department



Beverley Hyde

www.art-dept.com

Art Department



NEW + EXCLUSIVE

Williams-Sonoma Professional Stainless-Steel Cookware

Our professional tri-ply cookware does it all—from sautéing and frying to simmering and braising. An aluminum core transmits heat efficiently, while tempered glass lids seal in moisture and ergonomic handles stay cool. Brushed stainless-steel exterior. Dishwasher safe.

Jenn Louis
CHEF AND CO-OWNER
of L'Espresso restaurant
and Sonoma Tavern
in Portland, Oregon

To write her cookbook, *Photos by Jenn*, Portland-based chef Jenn Louis went straight to the source: she traveled to Italy and practiced making Italian dumpling pastas, such as gnocchetti, with local chefs and even home cooks. Louis transformed her scribbled notes into precise, meticulous recipes based on the techniques she learned during her travels.

GET THE RECIPE
Full recipe instructions with chef's tips at williams-sonoma.com

A stainless steel pan with a lid, containing a cooked dish, on a kitchen counter. The pan is placed on a cork trivet. In the background, there are various kitchen items like a glass, a bottle, and a stack of plates.

Beverley Hyde

www.art-dept.com

Art Department



Beverley Hyde

www.art-dept.com

Art Department



Beverley Hyde

www.art-dept.com

Art Department



Beverley Hyde

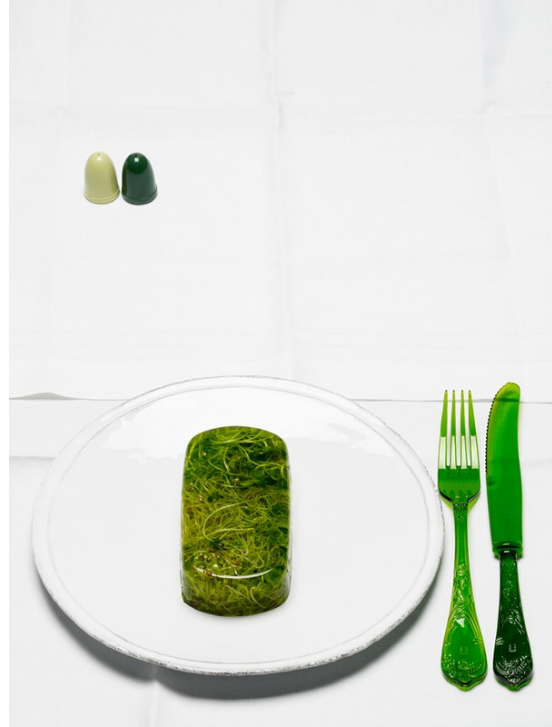
Art Department



Beverley Hyde

www.art-dept.com

Art Department



Beverley Hyde

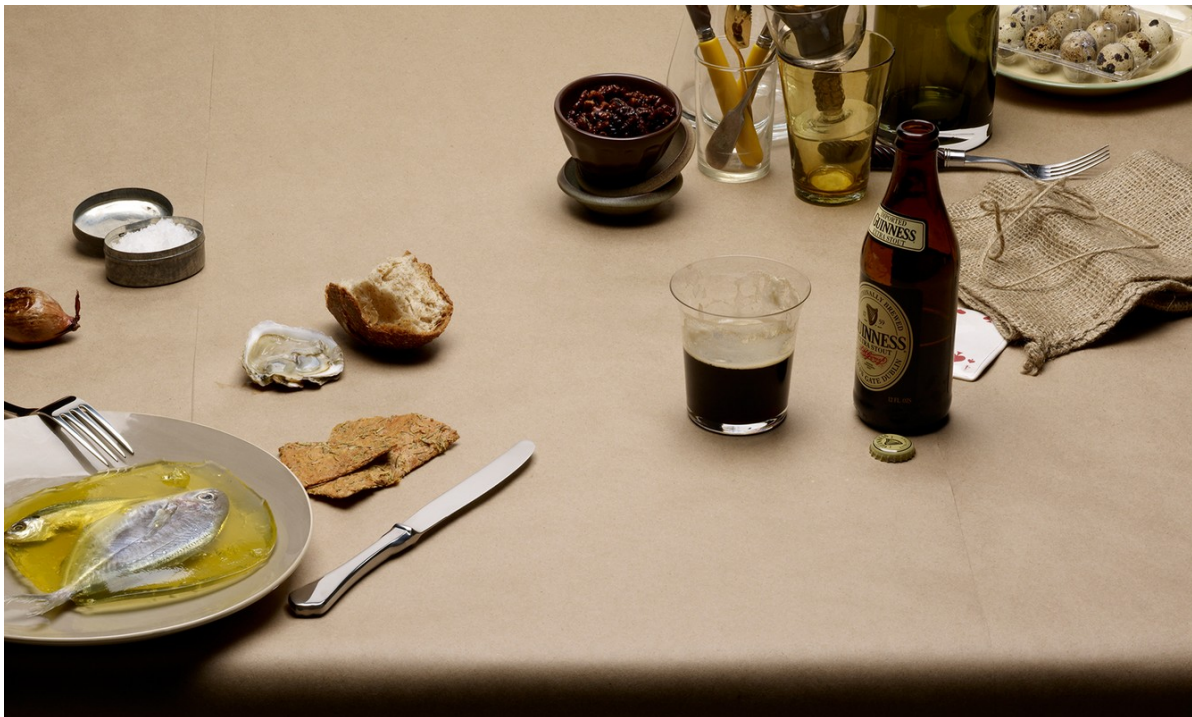
Art Department



Beverley Hyde

www.art-dept.com

Art Department



Beverley Hyde

www.art-dept.com

Art Department



Beverley Hyde

www.art-dept.com

Art Department



Beverley Hyde

www.art-dept.com

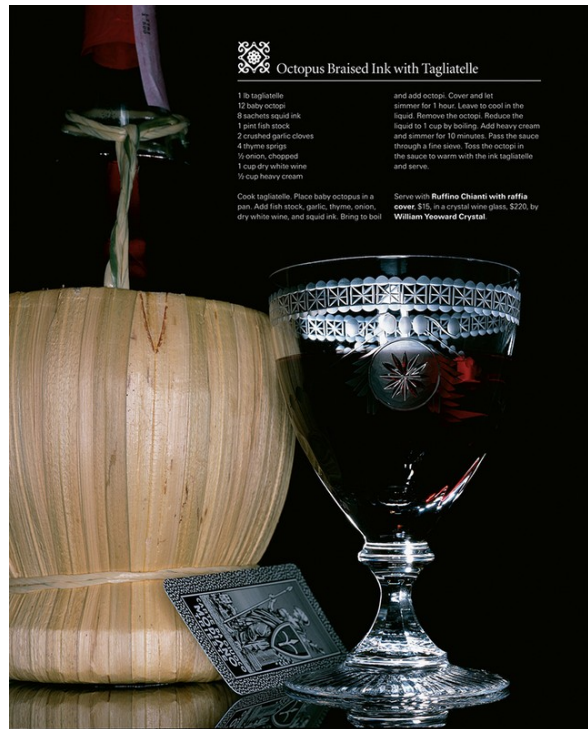
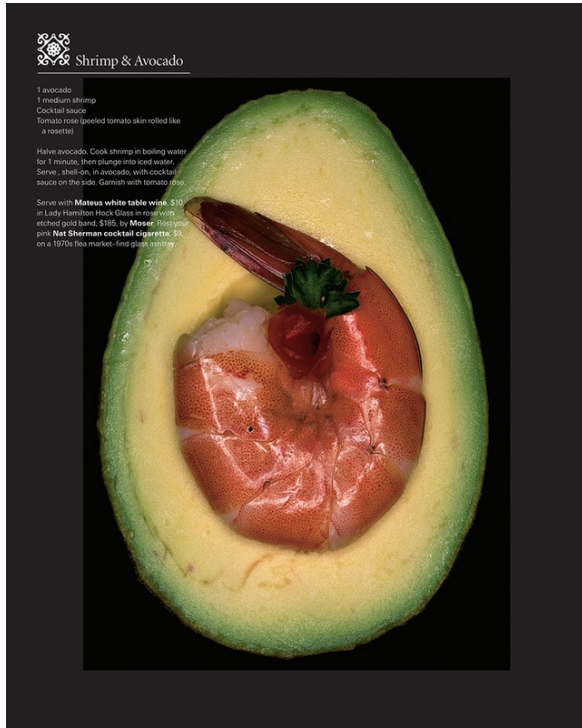
Art Department



Beverley Hyde

www.art-dept.com

Art Department



Beverley Hyde

www.art-dept.com