

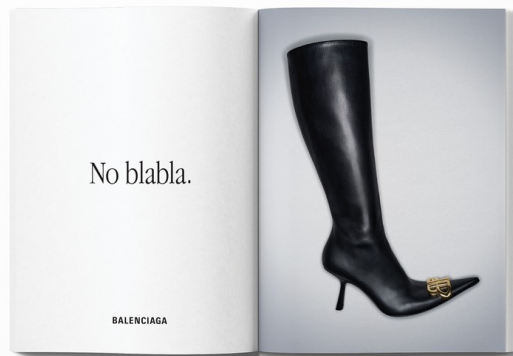
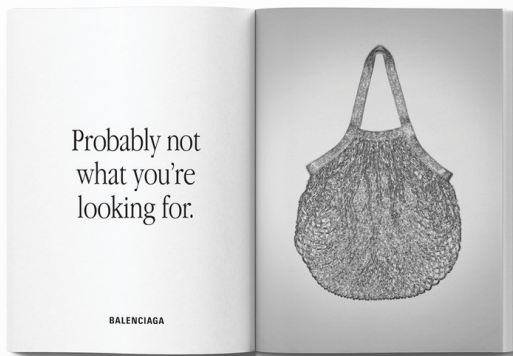
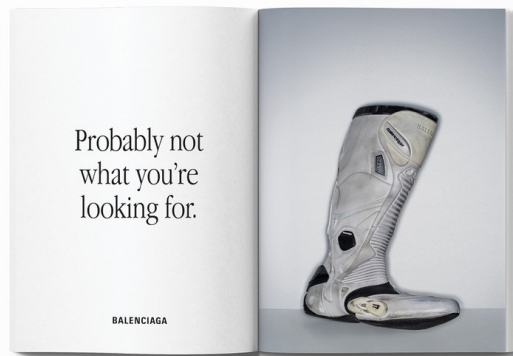
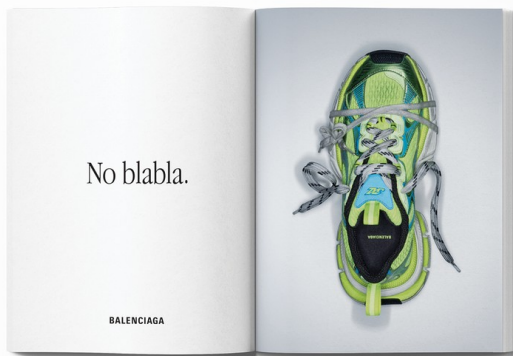
Art Department



Jocelyne Beaudoin

www.art-dept.com

Art Department



Jocelyne Beaudoin

www.art-dept.com

Art Department



Jocelyne Beaudoin

www.art-dept.com

Art Department



Jocelyne Beaudoin

www.art-dept.com

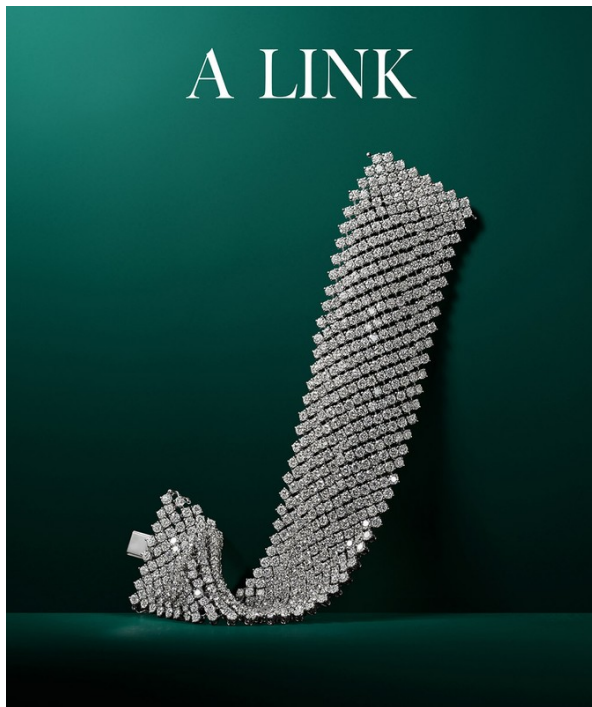
Art Department



Jocelyne Beaudoin

www.art-dept.com

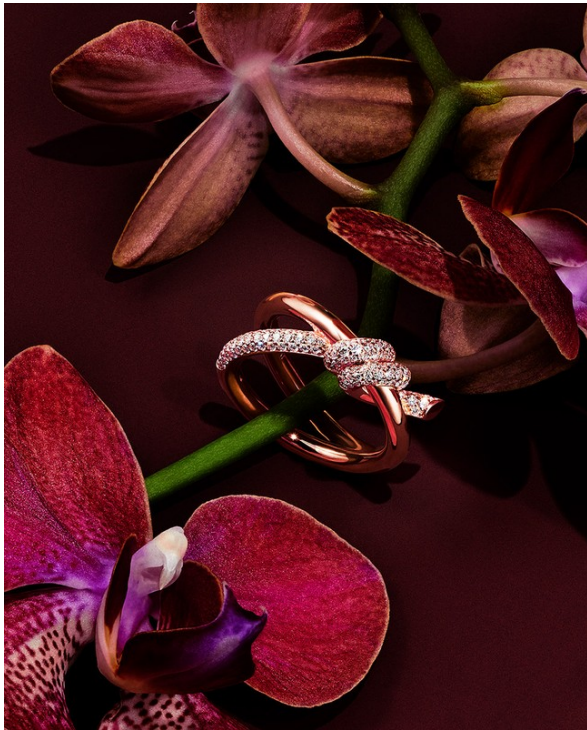
Art Department



Jocelyne Beaudoin

www.art-dept.com

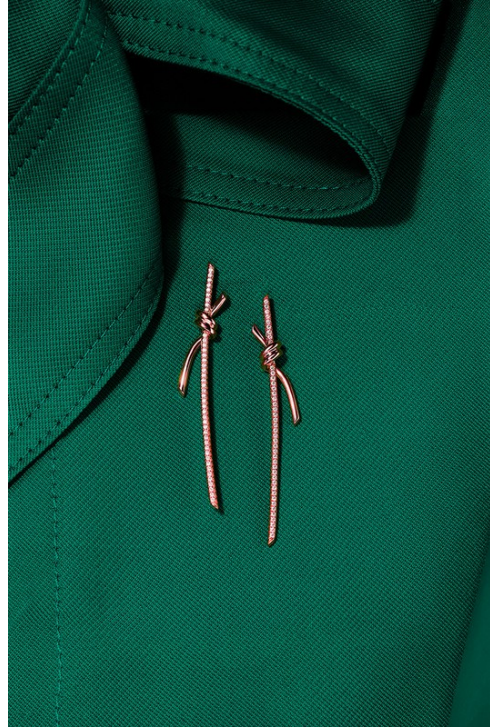
Art Department



Jocelyne Beaudoin

www.art-dept.com

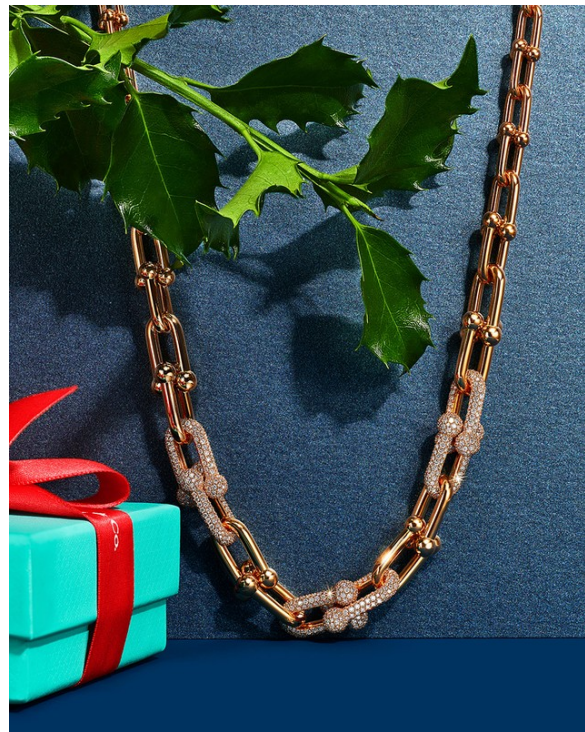
Art Department



Jocelyne Beaudoin

www.art-dept.com

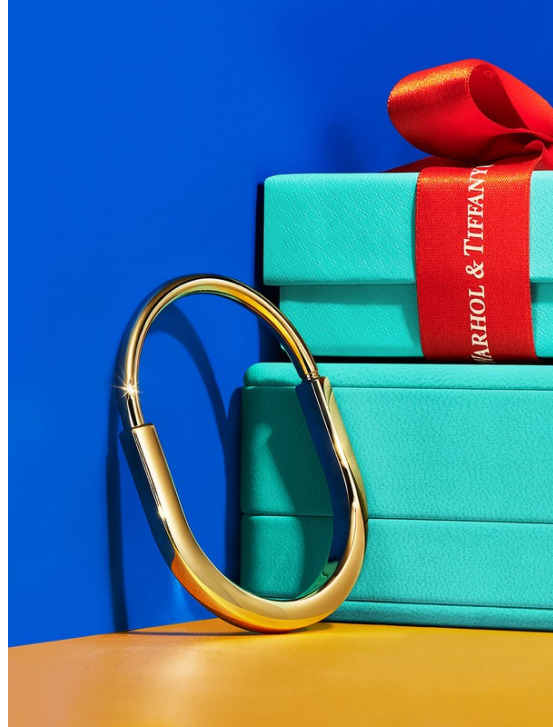
Art Department



Jocelyne Beaudoin

www.art-dept.com

Art Department



Jocelyne Beaudoin

www.art-dept.com

Art Department



Jocelyne Beaudoin

www.art-dept.com

Art Department



Jocelyne Beaudoin

www.art-dept.com

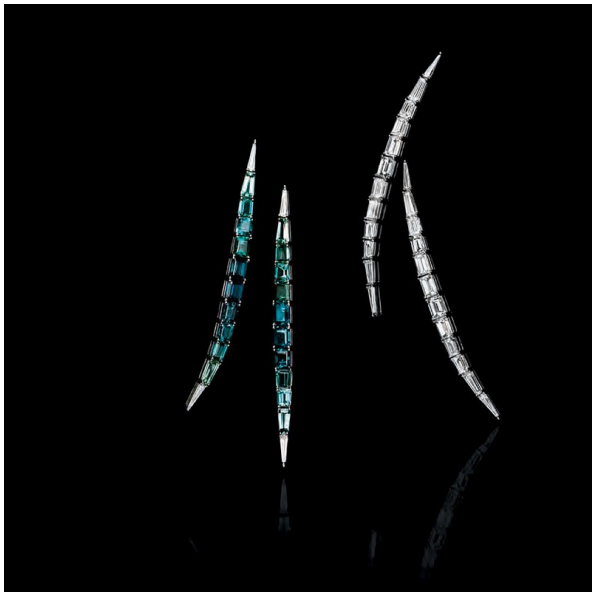
Art Department



Jocelyne Beaudoin

www.art-dept.com

Art Department



Jocelyne Beaudoin

www.art-dept.com

Art Department



Jocelyne Beaudoin

www.art-dept.com

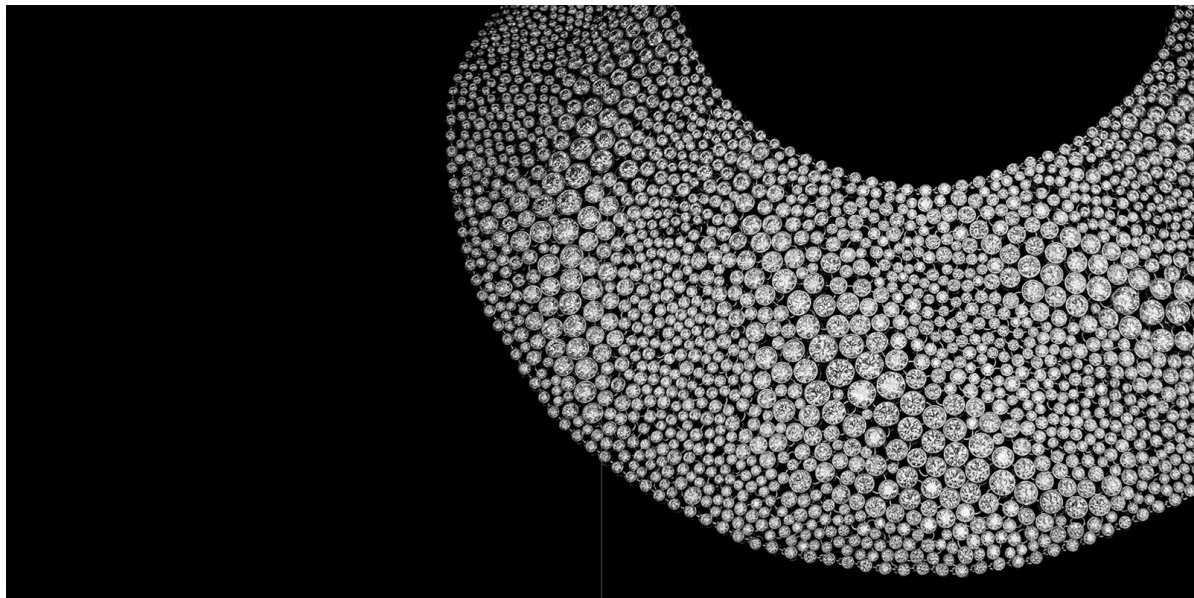
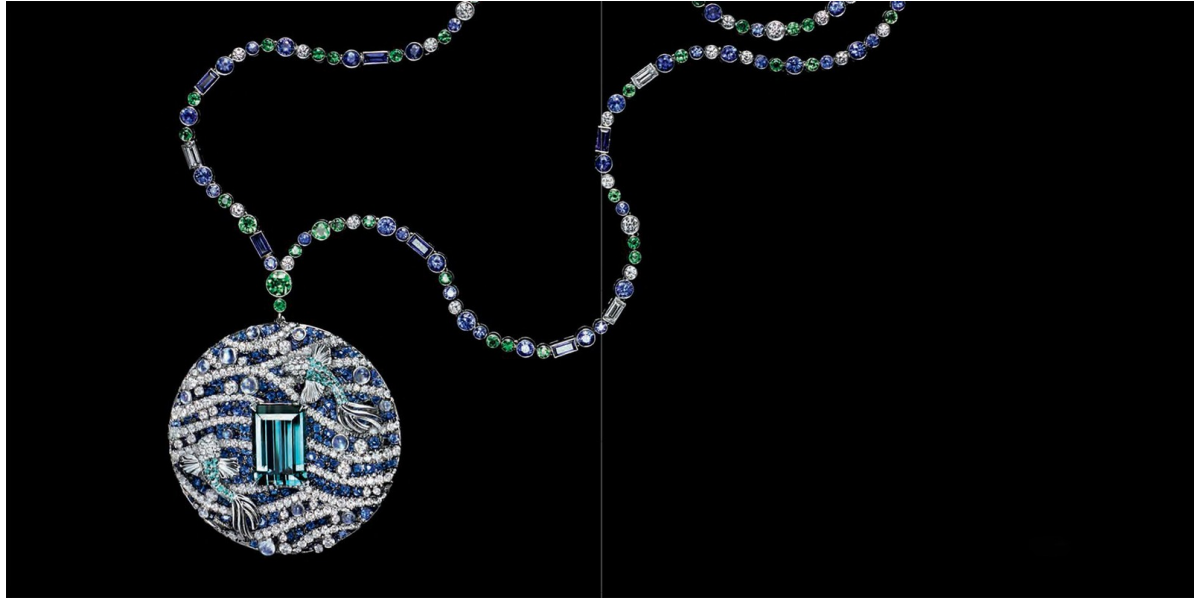
Art Department



Jocelyne Beaudoin

www.art-dept.com

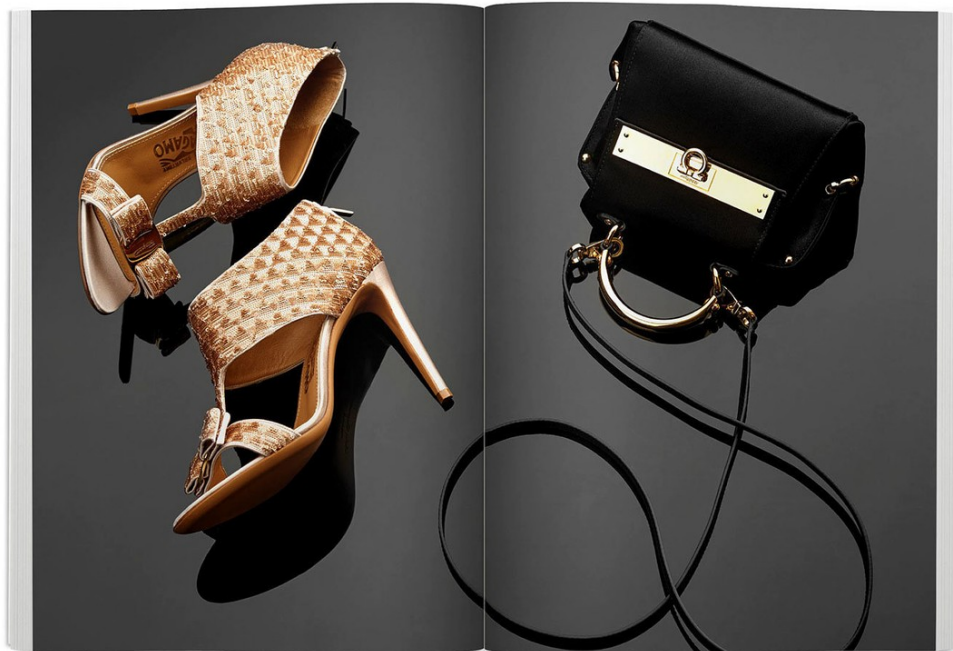
Art Department



Jocelyne Beaudoin

www.art-dept.com

Art Department



Jocelyne Beaudoin

www.art-dept.com

Art Department



Jocelyne Beaudoin

www.art-dept.com

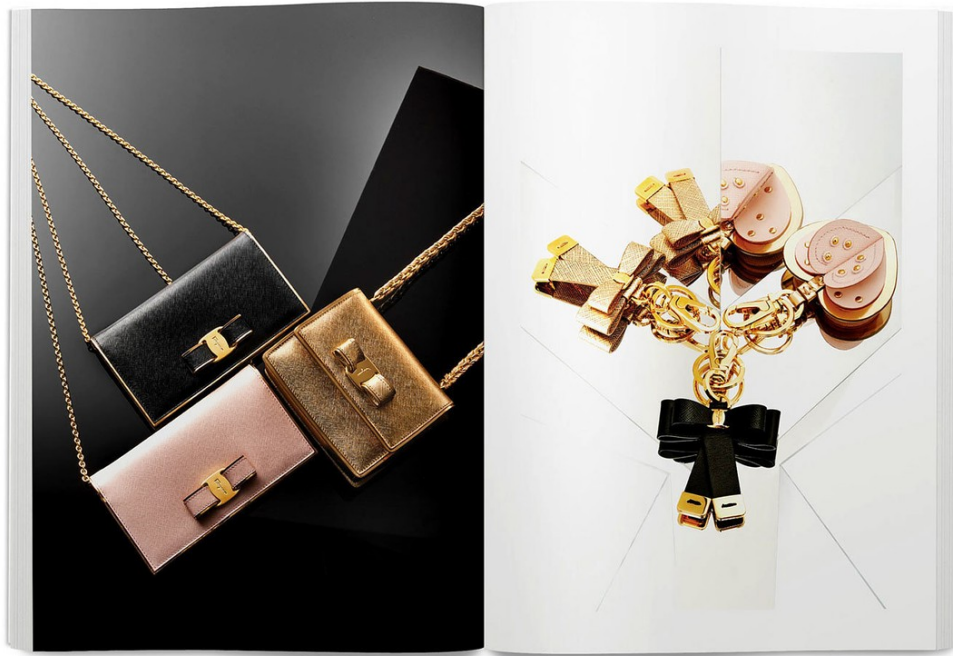
Art Department



Jocelyne Beaudoin

www.art-dept.com

Art Department



Precious Metal



Perfect pieces in glowing rose gold set the tone for the new season.
Photographs by Martyn Thompson



Jocelyne Beaudoin

www.art-dept.com

Art Department



Jocelyne Beaudoin

www.art-dept.com

Art Department



Jocelyne Beaudoin

www.art-dept.com

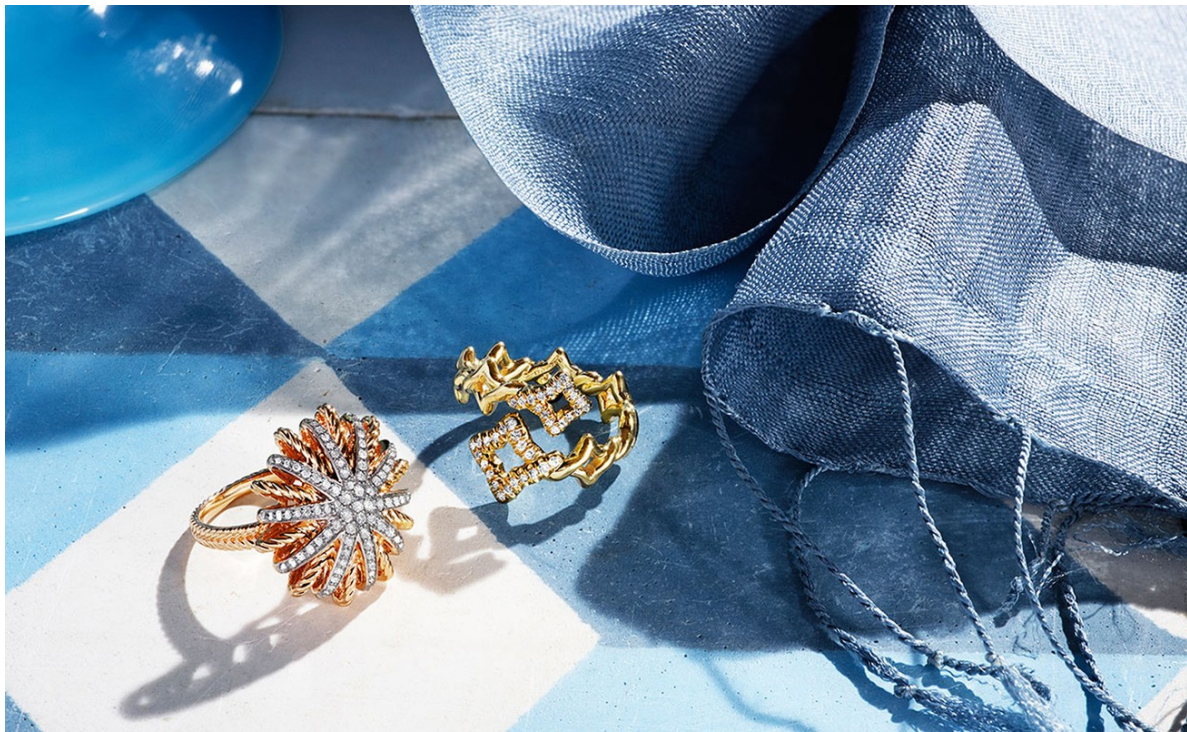
Art Department



Jocelyne Beaudoin

www.art-dept.com

Art Department



Jocelyne Beaudoin

www.art-dept.com

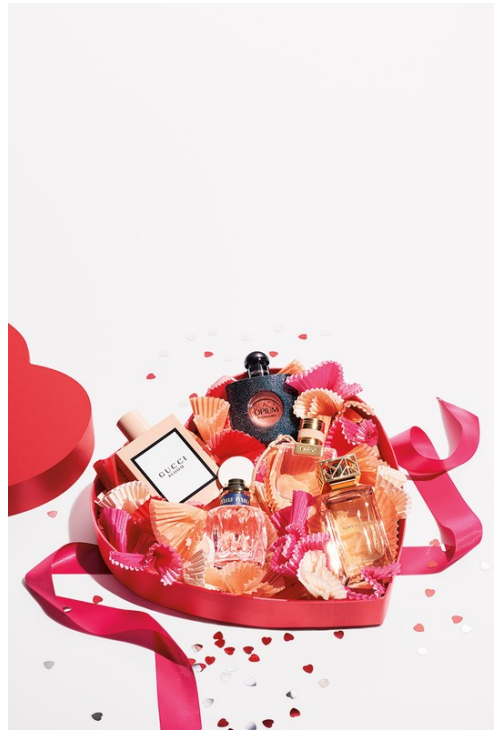
Art Department



Jocelyne Beaudoin

www.art-dept.com

Art Department



Jocelyne Beaudoin

www.art-dept.com

Art Department



Jocelyne Beaudoin

www.art-dept.com

Art Department



Jocelyne Beaudoin

www.art-dept.com

Art Department



Jocelyne Beaudoin

www.art-dept.com

Art Department



Jocelyne Beaudoin

www.art-dept.com

Art Department



Jocelyne Beaudoin

www.art-dept.com

Art Department



A magnificently set table is a theater where romance, wit and fascinating conversation unfold.



Simple, well-crafted designs lend beauty and elegance to the table.

Jocelyne Beaudoin

www.art-dept.com

Art Department



Every object in your home should be both beautiful and useful.



Jocelyne Beaudoin

www.art-dept.com

Art Department



Jocelyne Beaudoin

www.art-dept.com

Art Department



A JOYOUS UNION

Celebrate the beginning of a beautiful life together with Tiffany's exquisite collections for the table.

[LEARN MORE](#)



Jocelyne Beaudoin

www.art-dept.com

Art Department



Jocelyne Beaudoin

www.art-dept.com

Art Department



ISN'T IT ROMANTIC

A quietly elegant meal for two allows romance to linger long after the last course is served.

[LEARN MORE](#)

*"Beautiful design
makes a
beautiful life."*

founder Charles Lewis Tiffany



Jocelyne Beaudoin

www.art-dept.com

Art Department



Jocelyne Beaudoin

www.art-dept.com

Art Department



Jocelyne Beaudoin

www.art-dept.com

Art Department



Jocelyne Beaudoin

www.art-dept.com

Art Department



Jocelyne Beaudoin

www.art-dept.com

Art Department



Jocelyne Beaudoin

www.art-dept.com

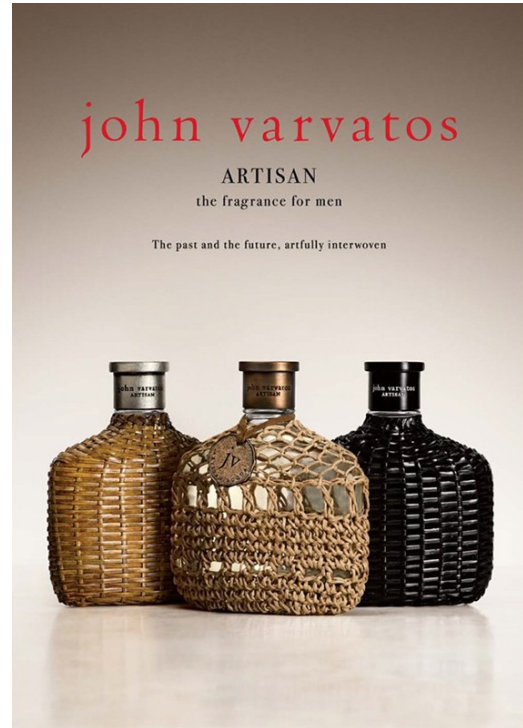
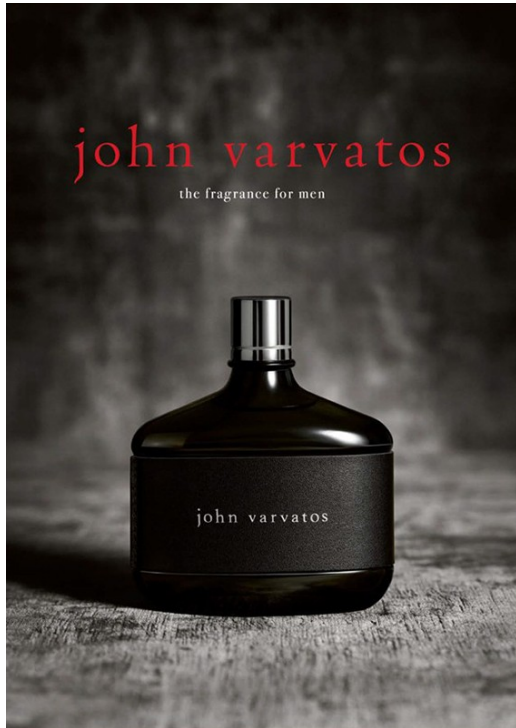
Art Department



Jocelyne Beaudoin

www.art-dept.com

Art Department



Jocelyne Beaudoin

www.art-dept.com

Art Department



Jocelyne Beaudoin

www.art-dept.com

Art Department



Jocelyne Beaudoin

www.art-dept.com

A CIRCA jewelry box, open, revealing a collection of vintage-style jewelry. The box is green with gold-colored metal edges and a green velvet interior. Inside, there are several necklaces, including a large pearl necklace and a chain with a large pendant. There are also earrings, including a pair of large, ornate earrings. The box is placed on a dark wooden surface. To the left of the box is a bouquet of yellow and white roses. In front of the box are two framed photographs: one of a woman in a long dress and another of a family. To the right of the box is a small, round, gold-colored watch with a black strap. The background is a dark blue wall with gold-colored trim. The word "CIRCA" is written in white capital letters in the top right corner.



www.art-dept.com



www.art-dept.com

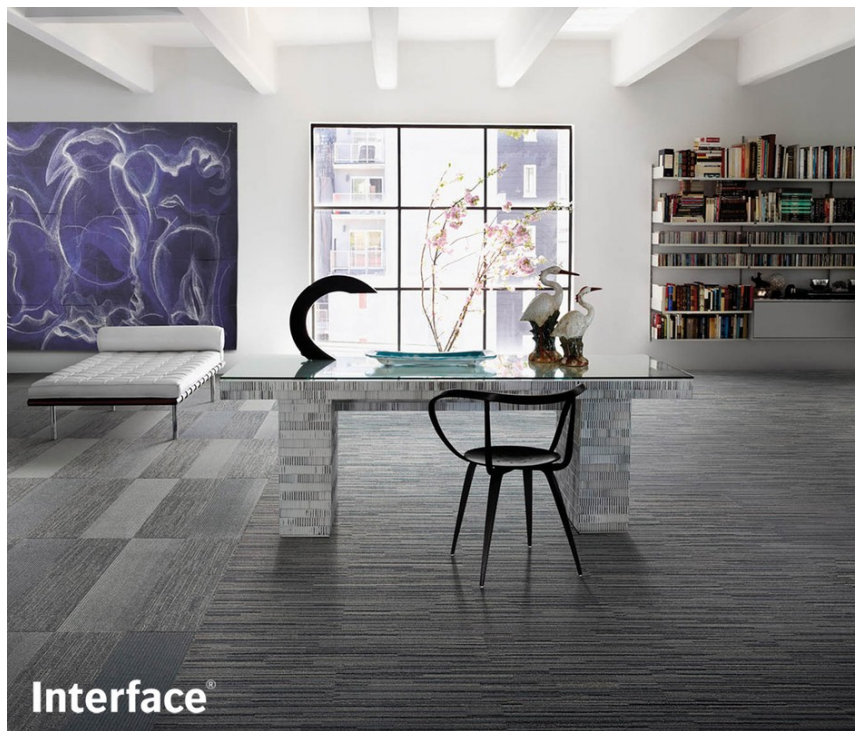
Art Department



Jocelyne Beaudoin

www.art-dept.com

Art Department



Jocelyne Beaudoin

www.art-dept.com

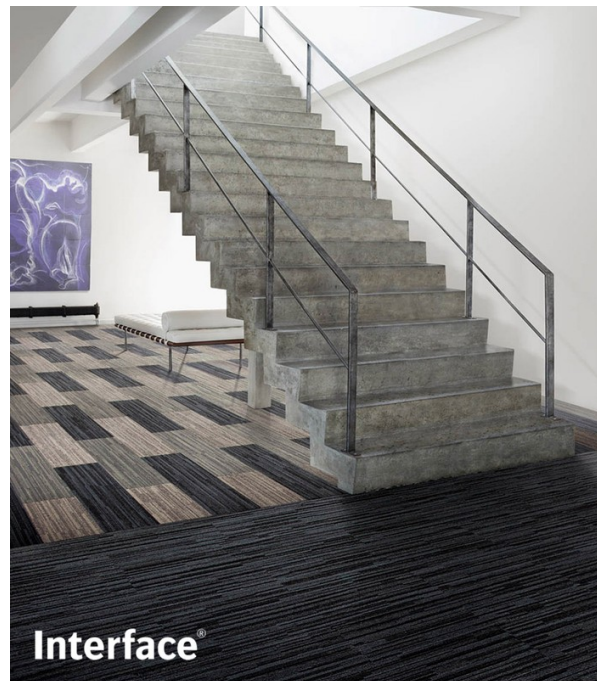
Art Department



Jocelyne Beaudoin

www.art-dept.com

Art Department



Jocelyne Beaudoin

www.art-dept.com

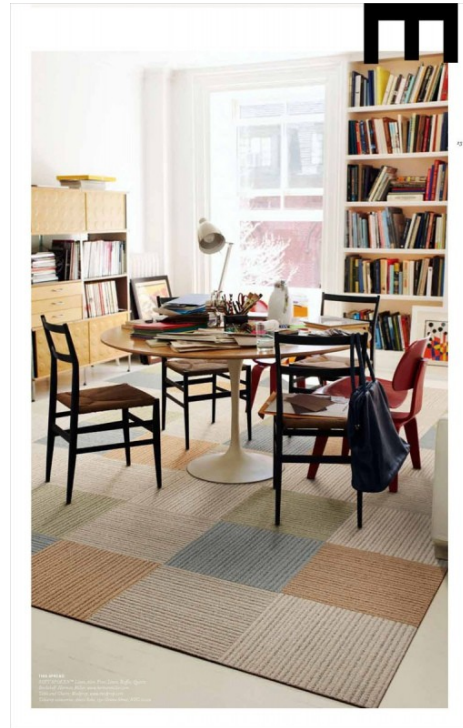
Art Department



Jocelyne Beaudoin

www.art-dept.com

Art Department



Jocelyne Beaudoin

www.art-dept.com

Art Department



Jocelyne Beaudoin

www.art-dept.com

Art Department



Jocelyne Beaudoin

www.art-dept.com

Art Department



Jocelyne Beaudoin

www.art-dept.com

Art Department



Jocelyne Beaudoin

www.art-dept.com

Art Department



Jocelyne Beaudoin

www.art-dept.com

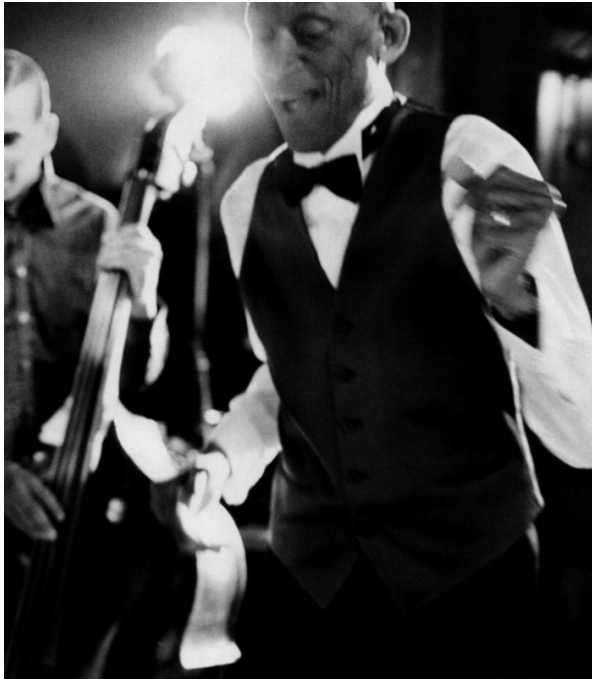
Art Department



Jocelyne Beaudoin

www.art-dept.com

Art Department



ON DISCERNING TASTE OYSTERS

BEST ORDERED IN MONTHS that contain the letter 'R' and always best when local, bracingly fresh and shared with the table. Sauces and garnish are a matter of personal preference but are best used sparingly. When accompanied by an icy shot, straight up, oysters are a wildly delicious way to satisfy the cocktail hour.

GREY GOOSE
World's Best Tasting Vodka
Sip Responsibly



ON DISCERNING TASTE LATE NIGHT DINING

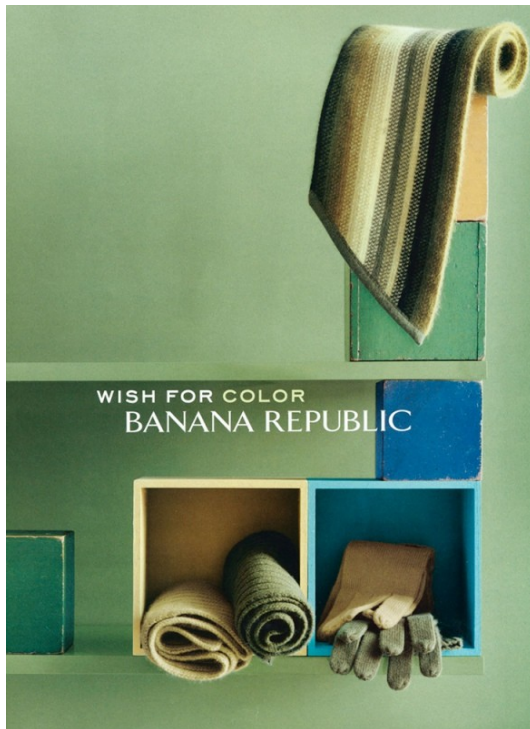
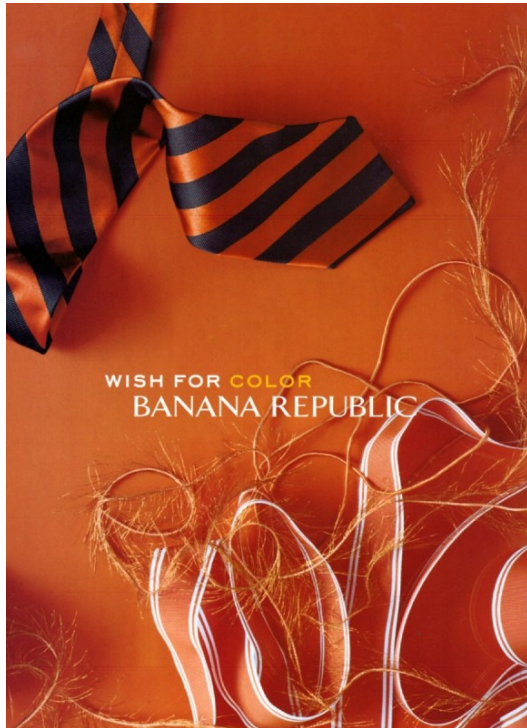
THERE'S SOMETHING WONDERFUL about a late night dinner, when no reservations are needed. The intimacy. The company of insiders. The spontaneous swapping of stories and seats at the table. The impromptu pleasure of lingering over a meal long after the day players have gone to bed.

GREY GOOSE
World's Best Tasting Vodka
Sip Responsibly

Jocelyne Beaudoin

www.art-dept.com

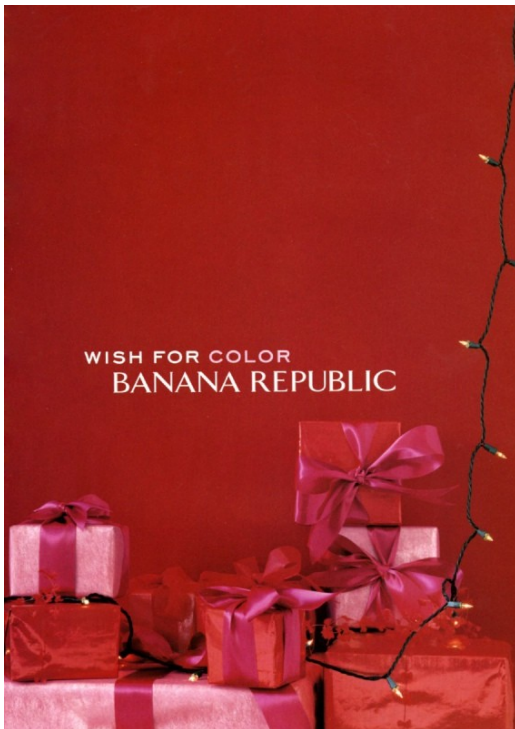
Art Department



Jocelyne Beaudoin

www.art-dept.com

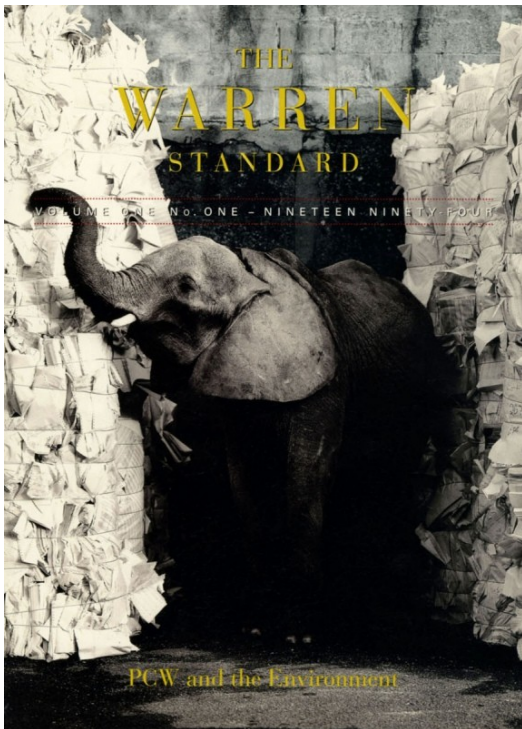
Art Department



Jocelyne Beaudoin

www.art-dept.com

Art Department



Jocelyne Beaudoin

www.art-dept.com

Art Department



Jocelyne Beaudoin

www.art-dept.com

Art Department



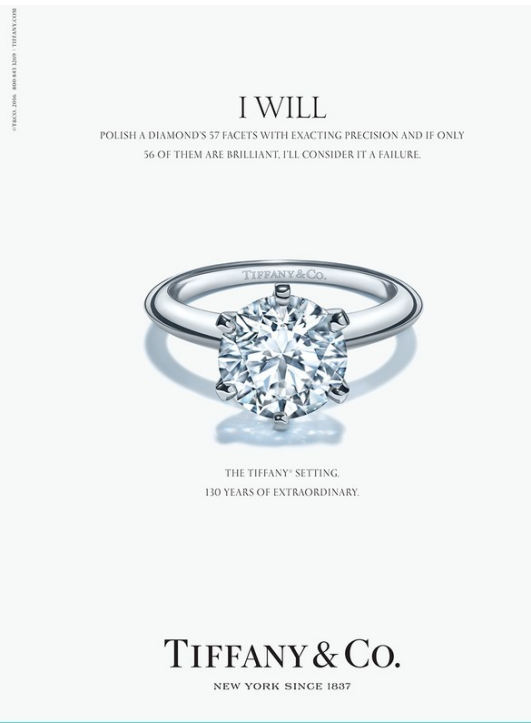
Jocelyne Beaudoin

www.art-dept.com

Art Department



MANEK PATEL
TIFFANY & CO. POLISHER
FOR 13 YEARS



Jocelyne Beaudoin

www.art-dept.com

Art Department



I WILL

CRAFT A SETTING SO FLAWLESSLY THAT THE EXQUISITE DIAMOND IT HOLDS
SEEMS TO FLOAT, JUST AS IT WAS DONE 130 YEARS AGO.

THE TIFFANY® SETTING.
130 YEARS OF EXTRAORDINARY.

TIFFANY & Co.
NEW YORK SINCE 1837



Jocelyne Beaudoin

www.art-dept.com

Art Department



© 2014 TIFFANY & CO. TIFFANY.COM

I WILL
REJECT 99.96% OF THE WORLD'S FINEST DIAMONDS BECAUSE THERE'S
A DIFFERENCE BETWEEN QUALITY AND TIFFANY-QUALITY.



THE TIFFANY® SETTING
130 YEARS OF EXTRAORDINARY.

TIFFANY & CO.
NEW YORK SINCE 1837



Jocelyne Beaudoin

www.art-dept.com

Art Department



Jocelyne Beaudoin

www.art-dept.com

Art Department



Jocelyne Beaudoin

www.art-dept.com

Art Department



Jocelyne Beaudoin

www.art-dept.com

Art Department



Jocelyne Beaudoin

www.art-dept.com

Art Department



Jocelyne Beaudoin

www.art-dept.com

Art Department



Jocelyne Beaudoin

www.art-dept.com

Art Department



Jocelyne Beaudoin

www.art-dept.com

Art Department



Jocelyne Beaudoin

www.art-dept.com

Art Department



Jocelyne Beaudoin

www.art-dept.com

Art Department



Jocelyne Beaudoin

www.art-dept.com

Art Department



Jocelyne Beaudoin

www.art-dept.com

Art Department



Jocelyne Beaudoin

www.art-dept.com

Art Department



Jocelyne Beaudoin

www.art-dept.com

Art Department



Jocelyne Beaudoin

www.art-dept.com

Art Department



Jocelyne Beaudoin

www.art-dept.com

Art Department



Jocelyne Beaudoin

www.art-dept.com

Art Department



Jocelyne Beaudoin

www.art-dept.com

Art Department



Jocelyne Beaudoin

www.art-dept.com

Art Department



Jocelyne Beaudoin

www.art-dept.com