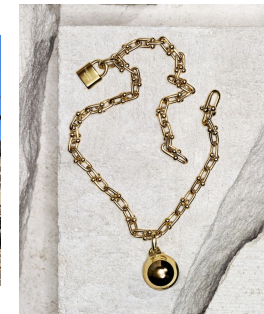
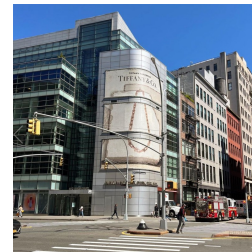
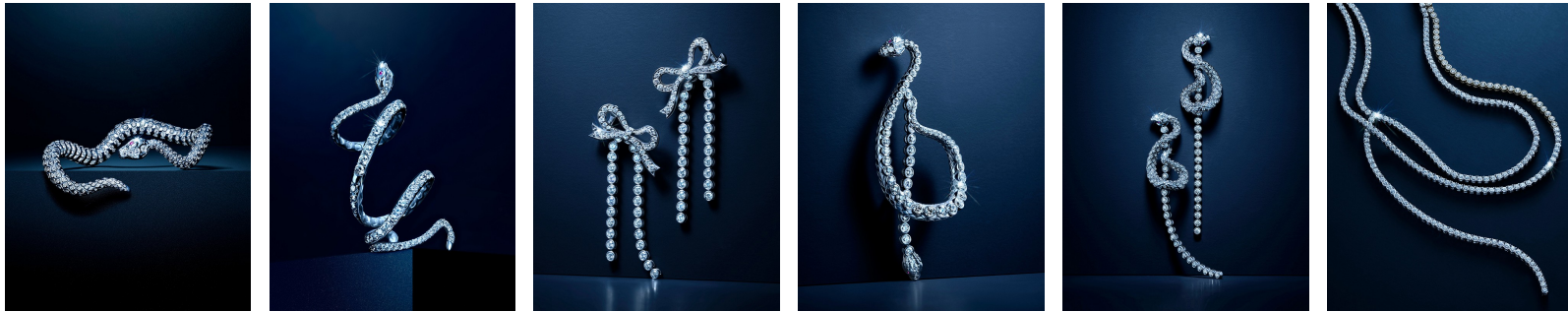


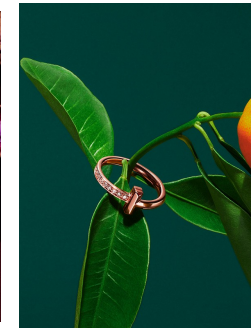
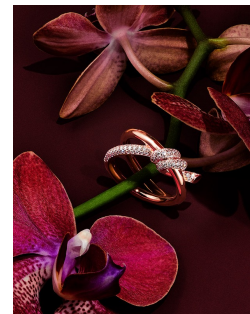
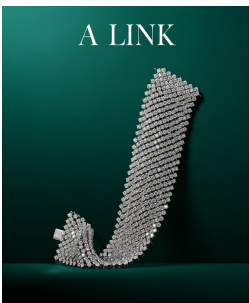
Art Department



Jocelyne Beaudoin

www.art-dept.com

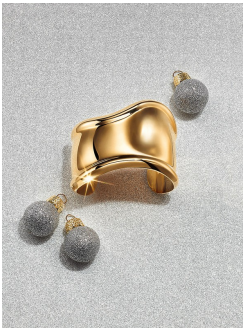
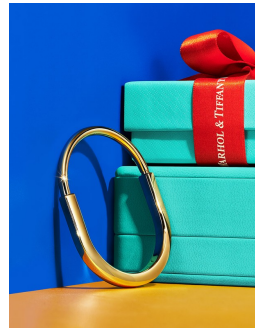
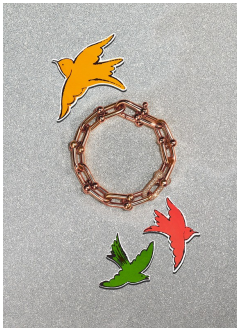
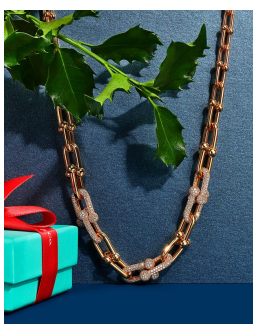
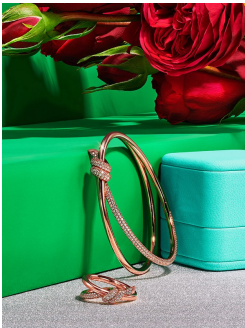
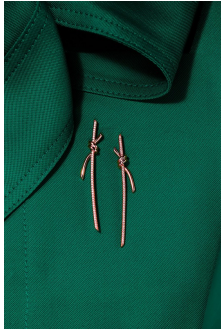
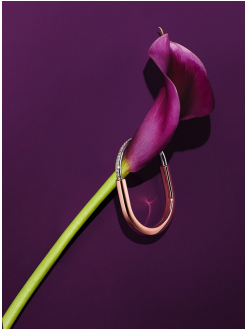
Art Department



Jocelyne Beaudoin

www.art-dept.com

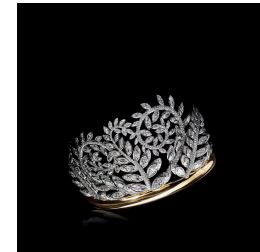
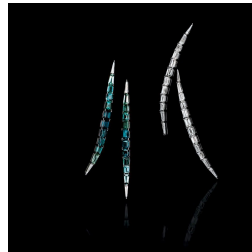
Art Department



Jocelyne Beaudoin

www.art-dept.com

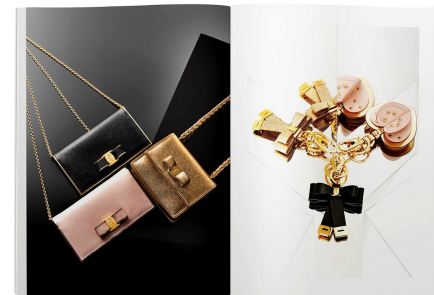
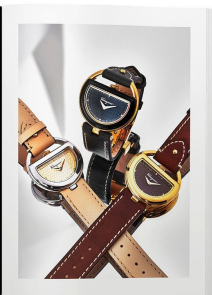
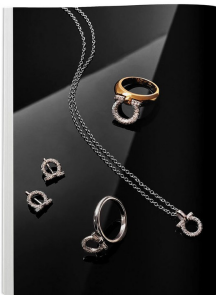
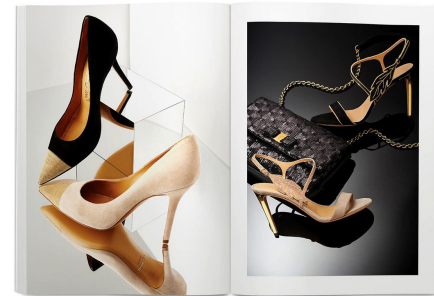
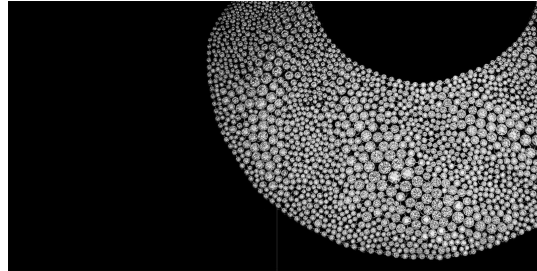
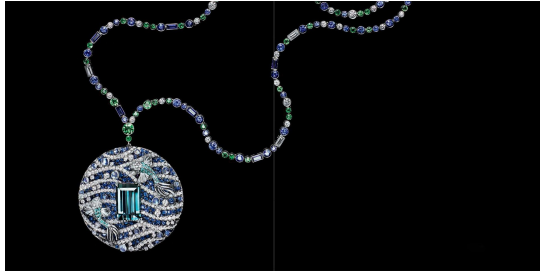
Art Department



Jocelyne Beaudoin

www.art-dept.com

Art Department



Jocelyne Beaudoin

www.art-dept.com

Art Department

Precious Metal



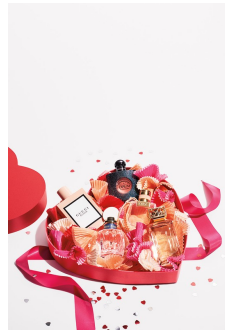
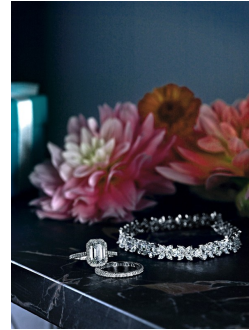
Perfect pieces in gleaming rose gold set the tone for the new season.
Photographs by Marilyn Thompson



Jocelyne Beaudoin

www.art-dept.com

Art Department



Jocelyne Beaudoin

www.art-dept.com

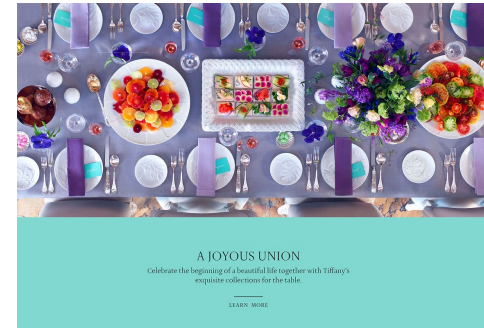
Art Department



Jocelyne Beaudoin

www.art-dept.com

Art Department



"Beautiful design makes a beautiful life."
— founder Charles Lewis Tiffany



Jocelyne Beaudoin

www.art-dept.com

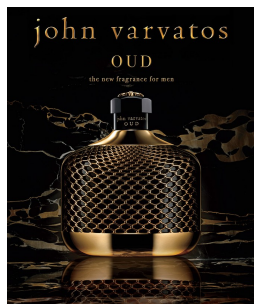
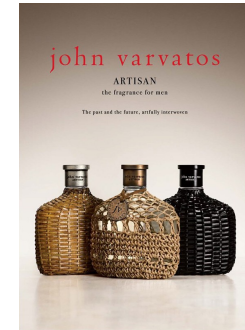
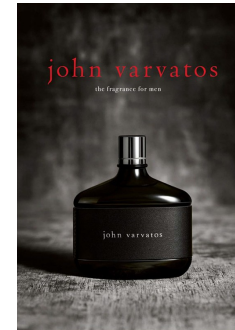
Art Department



Jocelyne Beaudoin

www.art-dept.com

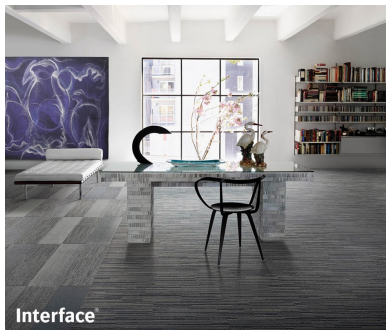
Art Department



Jocelyne Beaudoin

www.art-dept.com

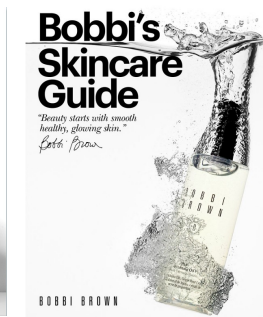
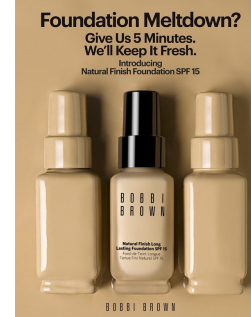
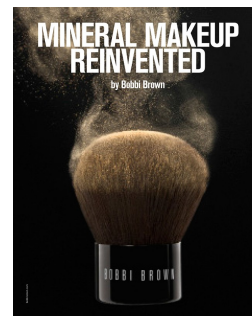
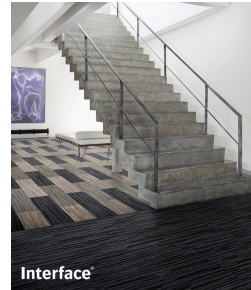
Art Department



Jocelyne Beaudoin

www.art-dept.com

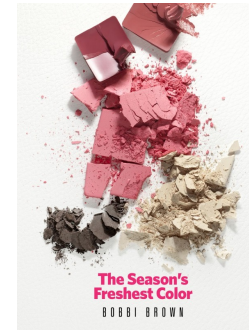
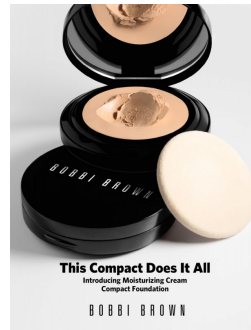
Art Department



Jocelyne Beaudoin

www.art-dept.com

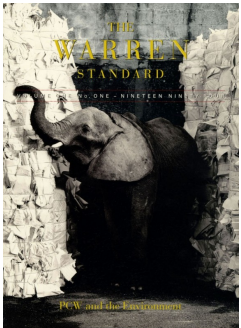
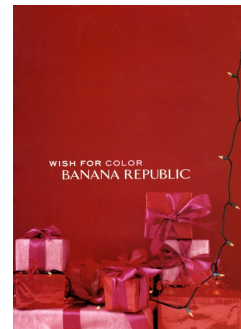
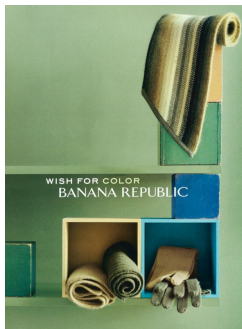
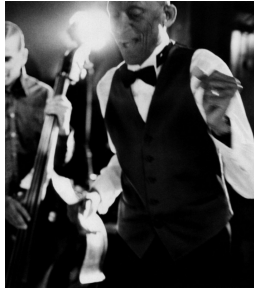
Art Department



Jocelyne Beaudoin

www.art-dept.com

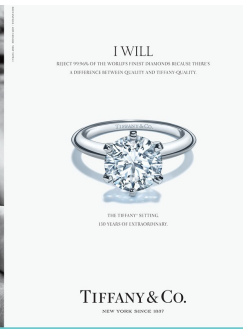
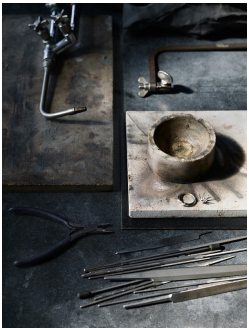
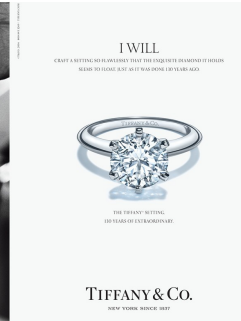
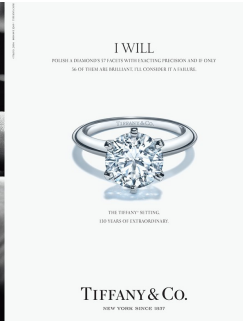
Art Department



Jocelyne Beaudoin

www.art-dept.com

Art Department



Jocelyne Beaudoin

www.art-dept.com

Art Department



Jocelyne Beaudoin

www.art-dept.com

Art Department



Jocelyne Beaudoin

www.art-dept.com

Art Department



Jocelyne Beaudoin

www.art-dept.com

Art Department



Jocelyne Beaudoin

www.art-dept.com