

# Art Department

BESPOKE

## Sparkling Conversation

Jeweler Nina Runsdorf conceives a home and salon to showcase her creative passions



## Lili Abir Regen

[www.art-dept.com](http://www.art-dept.com)

# Art Department

## living color

Art adviser Astrid Hill enlists designer Frank de Biasi to create a custom-tailored New York City home animated by vivid artworks and snappy, sophisticated hues

By Gay Gassmann  
Photography by Genevieve Garrappo  
Styled by Lili Abir Regen

1 GALERIEMAGAZINE.COM



In the living room of her family's Upper East Side apartment, Astrid Hill, founder of Starburst and Koloro, installed a black Crooner console above the fireplace, which works by Laura Geller's custom and Frank de Biasi's hand-painted. The room's design, designed by Frank de Biasi, features the room with a bold and energetic feel. The room's design is a blend of a variety of styles, including a mix of modern and traditional. The room's design is a blend of a variety of styles, including a mix of modern and traditional. The room's design is a blend of a variety of styles, including a mix of modern and traditional.



## Lili Abir Regen

[www.art-dept.com](http://www.art-dept.com)

# Art Department



Lili Abir Regen

[www.art-dept.com](http://www.art-dept.com)

# Art Department



Lili Abir Regen

[www.art-dept.com](http://www.art-dept.com)

# Art Department



Lili Abir Regen

[www.art-dept.com](http://www.art-dept.com)

# Art Department



Lili Abir Regen

[www.art-dept.com](http://www.art-dept.com)

# Art Department



Lili Abir Regen

[www.art-dept.com](http://www.art-dept.com)

# Art Department



Lili Abir Regen

[www.art-dept.com](http://www.art-dept.com)



# Art Department

## A COUTURIER'S COTTAGE



Lili Abir Regen

[www.art-dept.com](http://www.art-dept.com)

# Art Department



Lili Abir Regen

[www.art-dept.com](http://www.art-dept.com)

# Art Department



Lili Abir Regen

[www.art-dept.com](http://www.art-dept.com)

# Art Department



Lili Abir Regen

[www.art-dept.com](http://www.art-dept.com)

# Art Department



## Robust Refresh

Two decades after renovating a family's Manhattan apartment, architect Lee F. Mindel undertakes a dramatic reinvention spurred by their ever-expanding collection of adventurous art

*By Vicki Lacey  
Photography by Tim Lenz  
Styled by Lili Abir Regen*

A Charles Gaines painting and a figurative sculpture by Thomas Hirschhorn are a key decorative touch by Lee Mindel in one end of the living and dining areas created by architect Lee F. Mindel in his redesign of 501 Upper East Side apartment. Other art pieces by the architect are grouped with a Paul Klee painting. Other art pieces include a custom-made coffee table by German artist and Berlin-based home's Yusef Beyum, a custom-made glass and metal table by a Chicagoan Perland prototype, and the built-in side table by Andrei Albu. For details see sources.

GALERIEMAGAZINE.COM 149

# Lili Abir Regen

www.art-dept.com

# Art Department



Lili Abir Regen

[www.art-dept.com](http://www.art-dept.com)

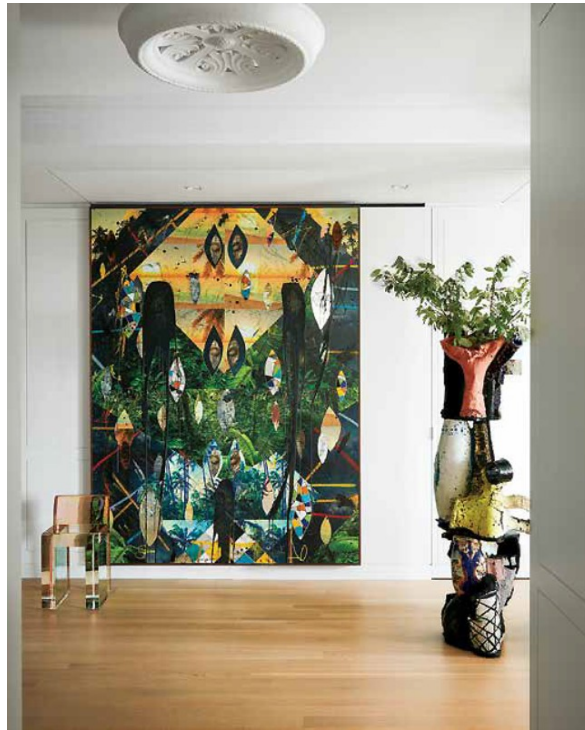
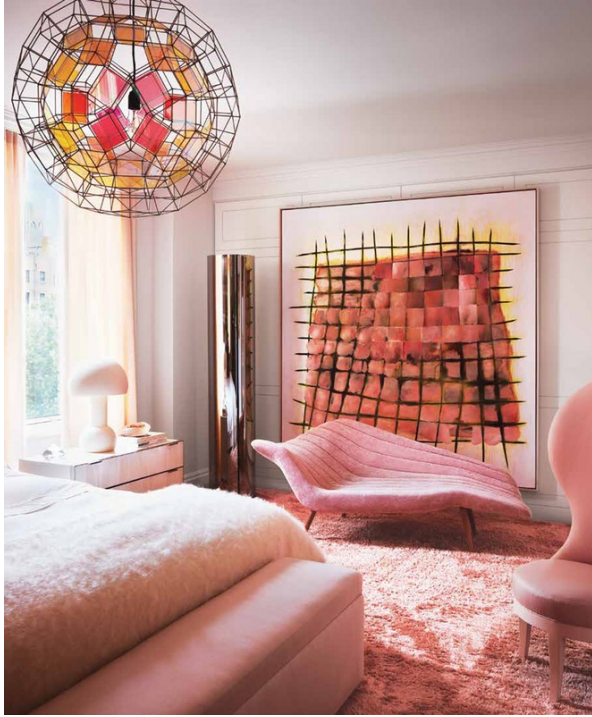
# Art Department



Lili Abir Regen

[www.art-dept.com](http://www.art-dept.com)

# Art Department



Lili Abir Regen

[www.art-dept.com](http://www.art-dept.com)



# Art Department



Lili Abir Regen

[www.art-dept.com](http://www.art-dept.com)

# Art Department



Lili Abir Regen

[www.art-dept.com](http://www.art-dept.com)

# Art Department



Lili Abir Regen

[www.art-dept.com](http://www.art-dept.com)

# Art Department



Lili Abir Regen

[www.art-dept.com](http://www.art-dept.com)

# Art Department



Lili Abir Regen

[www.art-dept.com](http://www.art-dept.com)

# Art Department



Lili Abir Regen

[www.art-dept.com](http://www.art-dept.com)

# Art Department



Lili Abir Regen

[www.art-dept.com](http://www.art-dept.com)

# Art Department



Lili Abir Regen

[www.art-dept.com](http://www.art-dept.com)



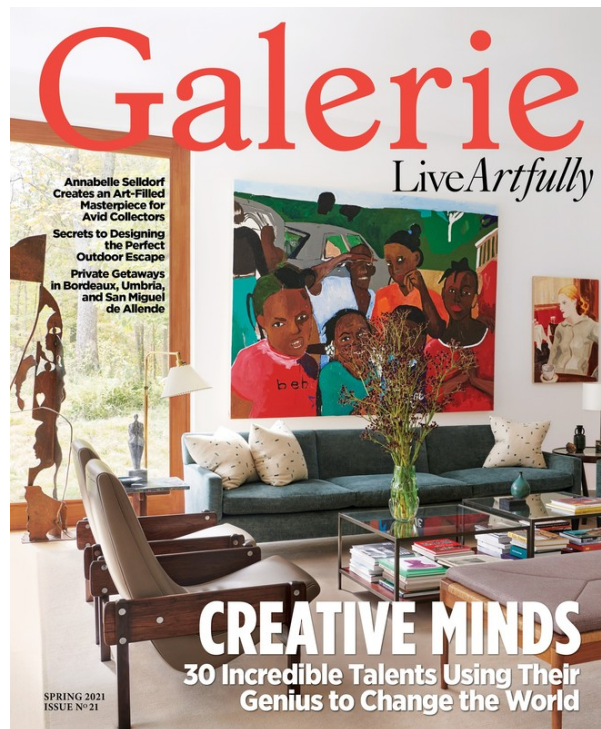
# Art Department



Lili Abir Regen

[www.art-dept.com](http://www.art-dept.com)

# Art Department



Lili Abir Regen

[www.art-dept.com](http://www.art-dept.com)

# Art Department



Lili Abir Regen

[www.art-dept.com](http://www.art-dept.com)

# Art Department



Lili Abir Regen

[www.art-dept.com](http://www.art-dept.com)

# Art Department



Lili Abir Regen

[www.art-dept.com](http://www.art-dept.com)

# Art Department



Lili Abir Regen

[www.art-dept.com](http://www.art-dept.com)

# Art Department



Lili Abir Regen

[www.art-dept.com](http://www.art-dept.com)

# Art Department



Lili Abir Regen

[www.art-dept.com](http://www.art-dept.com)



# Art Department



Lili Abir Regen

[www.art-dept.com](http://www.art-dept.com)

# Art Department



Lili Abir Regen

[www.art-dept.com](http://www.art-dept.com)

# Art Department



Lili Abir Regen

[www.art-dept.com](http://www.art-dept.com)

# Art Department



Lili Abir Regen

[www.art-dept.com](http://www.art-dept.com)

# Art Department



Lili Abir Regen

[www.art-dept.com](http://www.art-dept.com)

# Art Department



Lili Abir Regen

[www.art-dept.com](http://www.art-dept.com)

# Art Department



Lili Abir Regen

[www.art-dept.com](http://www.art-dept.com)

# Art Department



Lili Abir Regen

[www.art-dept.com](http://www.art-dept.com)



# Art Department



Lili Abir Regen

[www.art-dept.com](http://www.art-dept.com)

# Art Department



Lili Abir Regen

[www.art-dept.com](http://www.art-dept.com)

# Art Department



Lili Abir Regen

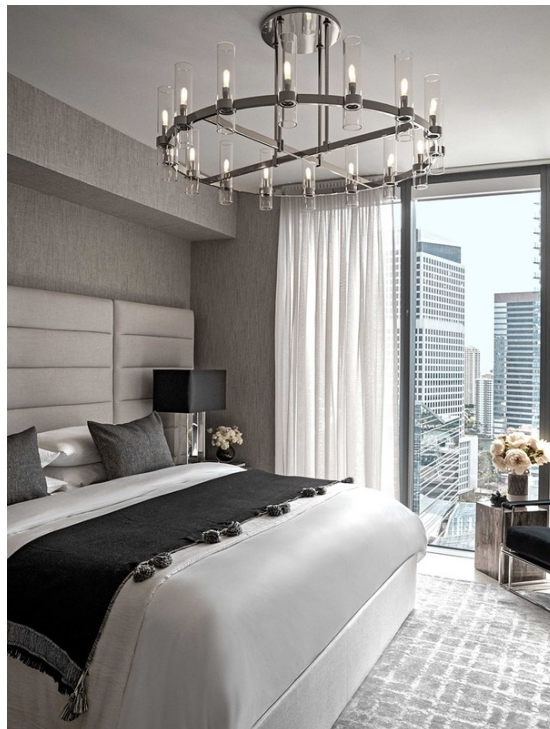
[www.art-dept.com](http://www.art-dept.com)

# Art Department



## BIENVENIDOS A MIAMI

PUERTO RICAN SUPERMODEL **JOAN SMALLS** TURNS TO RH, RESTORATION HARDWARE INTERIOR DESIGN TO CREATE A BEACHY VIBE IN HER MIAMI AERIE.  
BY MARC KARIM ZADEH    PRODUCED BY PARKER BOWIE LARSON AND JENNIFER DONNELLY  
PHOTOGRAPHS BY VICTOR DEMACHELIER    STYLED BY LILI ABRIR REGEN    WARDROBE STYLED BY ERIC McNEAL



## Lili Abir Regen

[www.art-dept.com](http://www.art-dept.com)

# Art Department



Lili Abir Regen

[www.art-dept.com](http://www.art-dept.com)

# Art Department



Lili Abir Regen

[www.art-dept.com](http://www.art-dept.com)

# Art Department



Lili Abir Regen

[www.art-dept.com](http://www.art-dept.com)

# Art Department

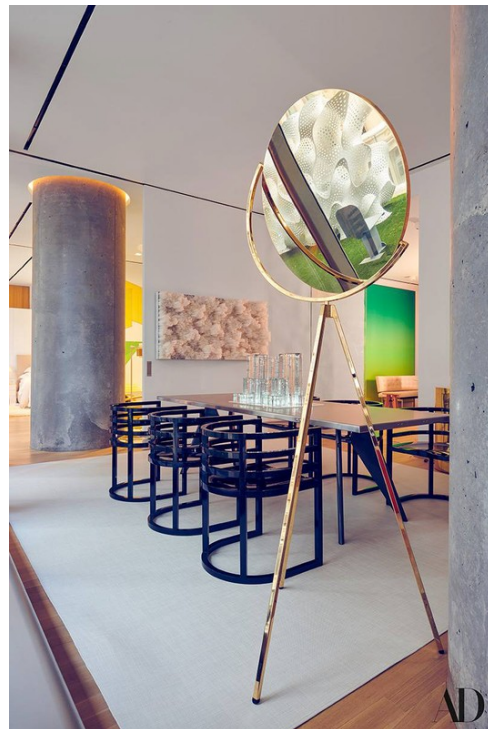


Lili Abir Regen

[www.art-dept.com](http://www.art-dept.com)



# Art Department



Lili Abir Regen

[www.art-dept.com](http://www.art-dept.com)

# Art Department



Lili Abir Regen

[www.art-dept.com](http://www.art-dept.com)

# Art Department



Lili Abir Regen

[www.art-dept.com](http://www.art-dept.com)

# Art Department



Lili Abir Regen

[www.art-dept.com](http://www.art-dept.com)

# Art Department



Lili Abir Regen

[www.art-dept.com](http://www.art-dept.com)

# Art Department



Lili Abir Regen

[www.art-dept.com](http://www.art-dept.com)

# Art Department



THE  
FINISH  
LINE

RACING LEGEND JEFF GORDON TURNED TO HIS PIT CREW OF DESIGN PROS AND HIS DISCERNING WIFE TO CREATE THE ULTIMATE MANHATTAN APARTMENT.

BY TOM VANDERBILT  
PHOTOGRAPHS BY PIETER ESTERSOHN

Jeff Gordon and his wife, Heidi, are in their New York City home room with their children, Leo and Ella. The vintage table, seen in the "Madison" kitchen. For details, see page 128.



## Lili Abir Regen

[www.art-dept.com](http://www.art-dept.com)

# Art Department



Lili Abir Regen

[www.art-dept.com](http://www.art-dept.com)



# Art Department



Lili Abir Regen

[www.art-dept.com](http://www.art-dept.com)

# Art Department



Lili Abir Regen

[www.art-dept.com](http://www.art-dept.com)

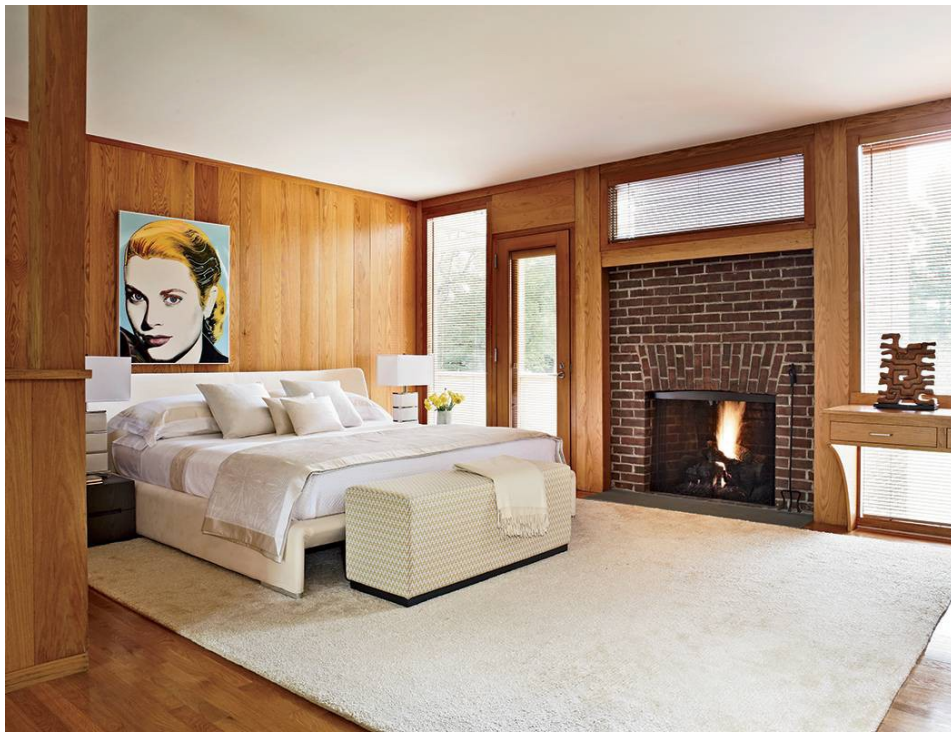
# Art Department



Lili Abir Regen

www.art-dept.com

# Art Department



Lili Abir Regen

[www.art-dept.com](http://www.art-dept.com)

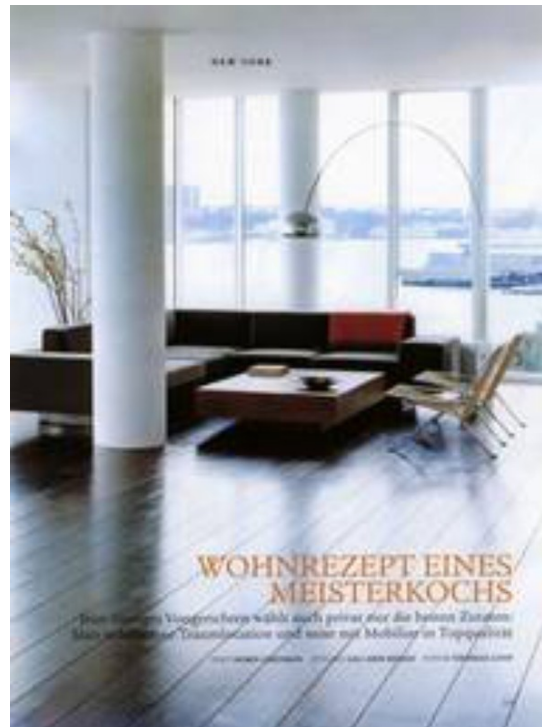
# Art Department



Lili Abir Regen

[www.art-dept.com](http://www.art-dept.com)

# Art Department



Lili Abir Regen

[www.art-dept.com](http://www.art-dept.com)

# Art Department



THERE ARE CERTAIN perfectly well-ordered worlds that immediately inspire awe in less organized beings—as well as hope that the deities of discipline will one day shine upon them too. Welcome to the staggeringly pristine Hamptons country house of Peri Wolfman, product designer and stylist extraordinaire, and Charley Gold, still-life photographer and author, with the wife of numerous tabletop-decorating and design books.

First, the approach: a winding road lined with cornfields and wildflowers waving gently in the breeze under an electric-blue sky, with hardly another house in sight but for an idyllic red barn straight out of a stage set. Minutes later, a tidy group of plain white structures emerges. Move past the picture-perfect herb garden out front through a meticulously arranged mudroom where boots and hats are dropped—neatly, of course—and enter an impeccable realm where every last detail has been assiduously attended to and everything is in its place. Really.

Building all this was a joint effort between the couple and Jack Ogels, a New York designer with a reputation for crafting livable contemporary houses out of off-the-shelf metal cladding. Seeing Ogels's own corrugated-steel home in East Hampton inspired Wolfman and Gold to commission the designer to build them one of their own. "I just loved the feeling of it," says Wolfman of Ogels's industrial-farmhouse

## Lili Abir Regen

www.art-dept.com

# Art Department



Lili Abir Regen

[www.art-dept.com](http://www.art-dept.com)



# Art Department



Lili Abir Regen

[www.art-dept.com](http://www.art-dept.com)

# Art Department



Lili Abir Regen

[www.art-dept.com](http://www.art-dept.com)

# Art Department



Lili Abir Regen

[www.art-dept.com](http://www.art-dept.com)

# Art Department



## COUNTRY CHIC

WHEN THE WEEKEND ROLLS AROUND, AWARD-WINNING ACCESSORIES DESIGNERS RICHARD LAMBERTSON AND JOHN TRUEX LEAVE SEVENTH AVENUE BEHIND FOR THEIR HANDSOME HOUSE IN THE PASTORAL BERKSHIRES

*Text by Dan Shaw - Photography by Pieter Estersohn - Styled by Lili Abir Regen  
Produced by Anita Sarsidi*



Facing page: John Truex (left) and Richard Lambertson at their home in Sharon, Connecticut. This page: A 19th-century lantern and a French mirror are displayed in the library; the Regis chair. Home text is upholstered in a Donghia cotton, the club chair and 19th-century French stools are from Pivetti House, and the rug is by Tisot Carpet. See Resources.



In the living room, a 1923 portrait, a wing chair upholstered in vintage green velvet, and a 19th-century Regis chair are the focal points. The striped bench was purchased at auction and is upholstered in an Italian weaving. In the foreground, the large chair is by Pivetti House, and the journal side desk has a custom-made leather top.

## Lili Abir Regen

[www.art-dept.com](http://www.art-dept.com)

# Art Department



Lili Abir Regen

[www.art-dept.com](http://www.art-dept.com)

# Art Department



Lili Abir Regen

[www.art-dept.com](http://www.art-dept.com)



# Art Department



Lili Abir Regen

[www.art-dept.com](http://www.art-dept.com)



# Art Department



Lili Abir Regen

[www.art-dept.com](http://www.art-dept.com)

# Art Department



Lili Abir Regen

[www.art-dept.com](http://www.art-dept.com)

# Art Department



Lili Abir Regen

[www.art-dept.com](http://www.art-dept.com)

# Art Department



Lili Abir Regen

[www.art-dept.com](http://www.art-dept.com)

# Art Department



Lili Abir Regen

[www.art-dept.com](http://www.art-dept.com)