

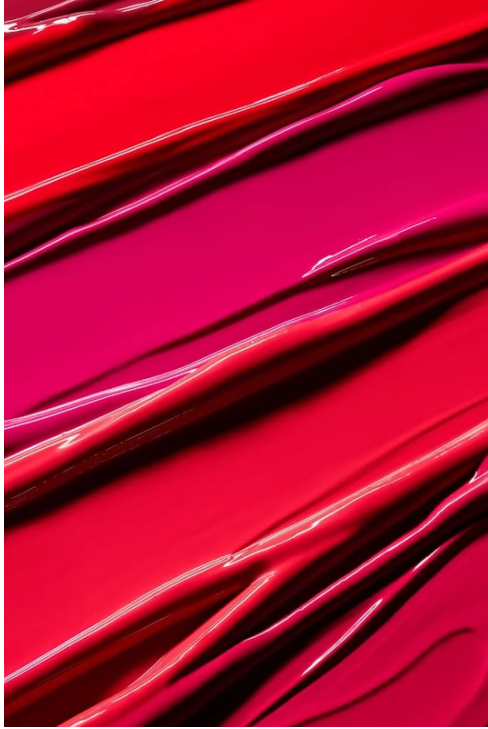
# Art Department



Linda Keil

[www.art-dept.com](http://www.art-dept.com)

# Art Department



Linda Keil

[www.art-dept.com](http://www.art-dept.com)

# Art Department



Linda Keil

[www.art-dept.com](http://www.art-dept.com)

# Art Department



Linda Keil

[www.art-dept.com](http://www.art-dept.com)

# Art Department



Linda Keil

[www.art-dept.com](http://www.art-dept.com)

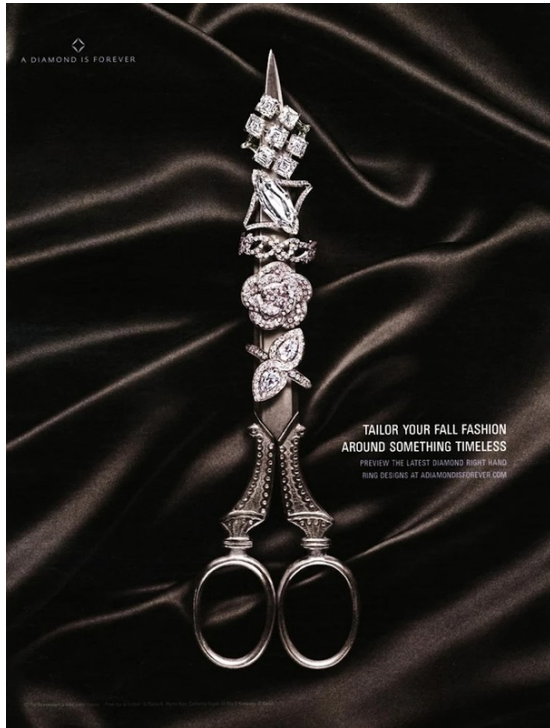
# Art Department



Linda Keil

[www.art-dept.com](http://www.art-dept.com)

# Art Department



Linda Keil

[www.art-dept.com](http://www.art-dept.com)

# Art Department



Linda Keil

[www.art-dept.com](http://www.art-dept.com)



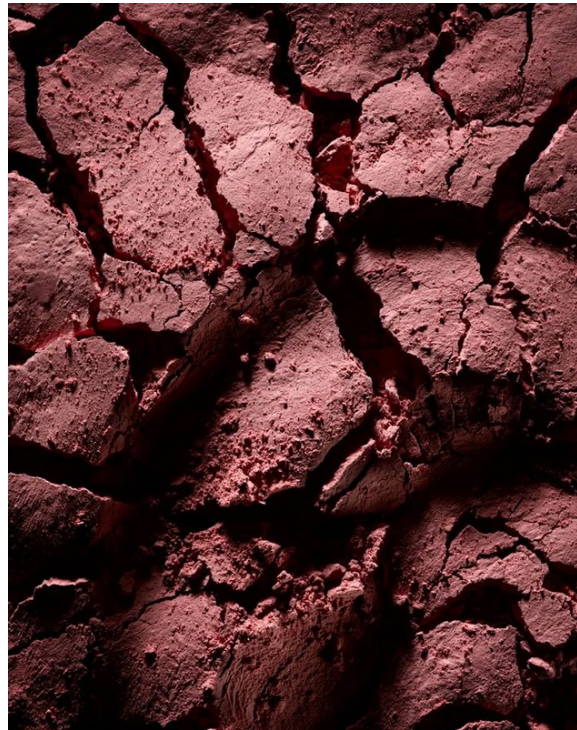
# Art Department



Linda Keil

[www.art-dept.com](http://www.art-dept.com)

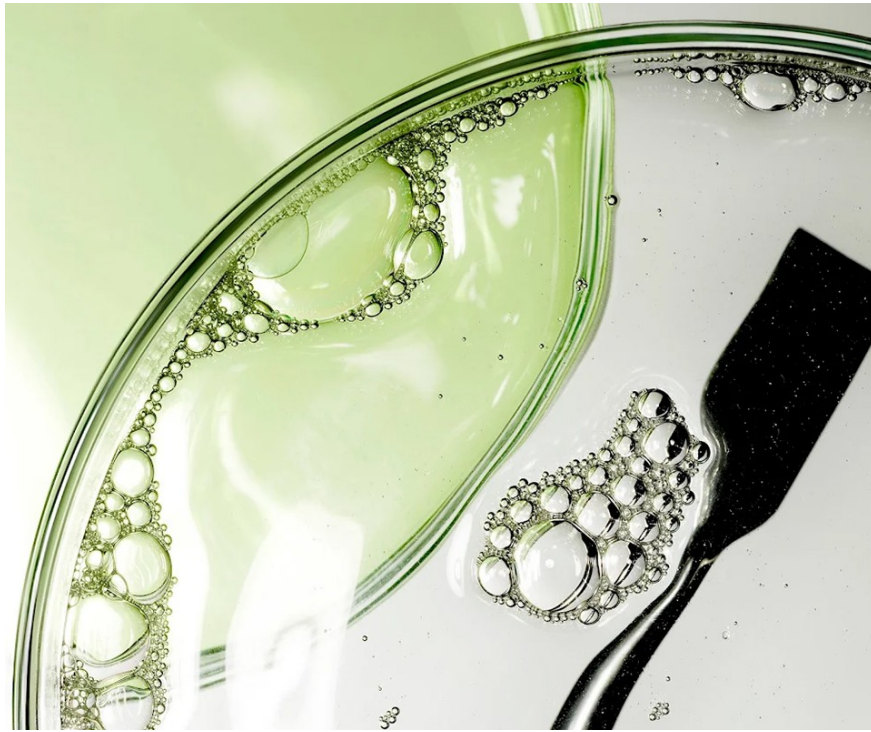
# Art Department



Linda Keil

[www.art-dept.com](http://www.art-dept.com)

# Art Department



Linda Keil

[www.art-dept.com](http://www.art-dept.com)

# Art Department



This page, left to  
right: Macri bracelet  
in white gold with  
rubies (\$16,000  
NVA/BCL); with dia-  
monds (\$23,000  
NVA/BCL) and with  
emeralds (\$17,000  
NVA/BCL). Opposite  
page: Rite bracelet  
with pearls (\$18,000  
NVA/BCL) and Rite  
necklace with pearls  
(\$8,000 NVA/BCL).

Linda Keil

[www.art-dept.com](http://www.art-dept.com)

# Art Department



Linda Keil

[www.art-dept.com](http://www.art-dept.com)