

# Art Department



Mark Chandler

[www.art-dept.com](http://www.art-dept.com)

# Art Department



Mark Chandler

[www.art-dept.com](http://www.art-dept.com)

# Art Department



Mark Chandler

[www.art-dept.com](http://www.art-dept.com)

# Art Department



Mark Chandler

[www.art-dept.com](http://www.art-dept.com)

# Art Department



Mark Chandler

[www.art-dept.com](http://www.art-dept.com)

# Art Department



Mark Chandler

[www.art-dept.com](http://www.art-dept.com)

# Art Department



Mark Chandler

[www.art-dept.com](http://www.art-dept.com)

# Art Department



Mark Chandler

[www.art-dept.com](http://www.art-dept.com)



# Art Department



Mark Chandler

[www.art-dept.com](http://www.art-dept.com)

# Art Department



Mark Chandler

[www.art-dept.com](http://www.art-dept.com)

# Art Department



Mark Chandler

[www.art-dept.com](http://www.art-dept.com)

# Art Department



Mark Chandler

[www.art-dept.com](http://www.art-dept.com)

# Art Department



Mark Chandler

[www.art-dept.com](http://www.art-dept.com)

# Art Department



Mark Chandler

[www.art-dept.com](http://www.art-dept.com)

# Art Department



Mark Chandler

[www.art-dept.com](http://www.art-dept.com)

# Art Department



Mark Chandler

[www.art-dept.com](http://www.art-dept.com)



# Art Department



Mark Chandler

[www.art-dept.com](http://www.art-dept.com)

# Art Department



Mark Chandler

[www.art-dept.com](http://www.art-dept.com)

# Art Department



Mark Chandler

[www.art-dept.com](http://www.art-dept.com)

# Art Department



Mark Chandler

[www.art-dept.com](http://www.art-dept.com)

# Art Department



Mark Chandler

[www.art-dept.com](http://www.art-dept.com)

# Art Department



Mark Chandler

[www.art-dept.com](http://www.art-dept.com)

# Art Department



Mark Chandler

[www.art-dept.com](http://www.art-dept.com)

# Art Department



Mark Chandler

[www.art-dept.com](http://www.art-dept.com)



# Art Department



Mark Chandler

[www.art-dept.com](http://www.art-dept.com)

# Art Department



Mark Chandler

[www.art-dept.com](http://www.art-dept.com)

# Art Department



Mark Chandler

[www.art-dept.com](http://www.art-dept.com)

# Art Department



Mark Chandler

[www.art-dept.com](http://www.art-dept.com)

# Art Department



Mark Chandler

[www.art-dept.com](http://www.art-dept.com)

# Art Department



Mark Chandler

[www.art-dept.com](http://www.art-dept.com)

# Art Department



Mark Chandler

[www.art-dept.com](http://www.art-dept.com)

# Art Department



Mark Chandler

[www.art-dept.com](http://www.art-dept.com)



# Art Department



Mark Chandler

[www.art-dept.com](http://www.art-dept.com)

# Art Department



Mark Chandler

[www.art-dept.com](http://www.art-dept.com)

# Art Department



Mark Chandler

[www.art-dept.com](http://www.art-dept.com)

# Art Department



Mark Chandler

[www.art-dept.com](http://www.art-dept.com)

# Art Department



Mark Chandler

[www.art-dept.com](http://www.art-dept.com)

# Art Department



Mark Chandler

[www.art-dept.com](http://www.art-dept.com)

# Art Department



Mark Chandler

[www.art-dept.com](http://www.art-dept.com)

# Art Department



Mark Chandler

[www.art-dept.com](http://www.art-dept.com)



# Art Department



Mark Chandler

[www.art-dept.com](http://www.art-dept.com)

# Art Department



Mark Chandler

[www.art-dept.com](http://www.art-dept.com)

# Art Department



Mark Chandler

[www.art-dept.com](http://www.art-dept.com)

# Art Department

LA MER



Mark Chandler

[www.art-dept.com](http://www.art-dept.com)

# Art Department

LA MER



Mark Chandler

[www.art-dept.com](http://www.art-dept.com)

# Art Department



Mark Chandler

[www.art-dept.com](http://www.art-dept.com)

# Art Department



Mark Chandler

[www.art-dept.com](http://www.art-dept.com)

# Art Department



Mark Chandler

[www.art-dept.com](http://www.art-dept.com)



# Art Department



Mark Chandler

[www.art-dept.com](http://www.art-dept.com)

# Art Department



EST. 1973  
**Timberland**   
BEST THEN. BETTER NOW.

Footwear and apparel for every escape. [Timberland.com](http://Timberland.com)

## Mark Chandler

[www.art-dept.com](http://www.art-dept.com)

# Art Department



Mark Chandler

[www.art-dept.com](http://www.art-dept.com)

# Art Department



Mark Chandler

[www.art-dept.com](http://www.art-dept.com)

# Art Department



Mark Chandler

[www.art-dept.com](http://www.art-dept.com)

# Art Department



Earthkeepers® Abington Field Coat  
Earthkeepers® Tapered Fit Denim  
Earthkeepers® Bradstreet Chukka  
featuring SensorFlex™ technology

EST. 1973  
**BEST THEN. BETTER NOW.**  
TIMBERLAND.COM

**Timberland** 

## Mark Chandler

[www.art-dept.com](http://www.art-dept.com)

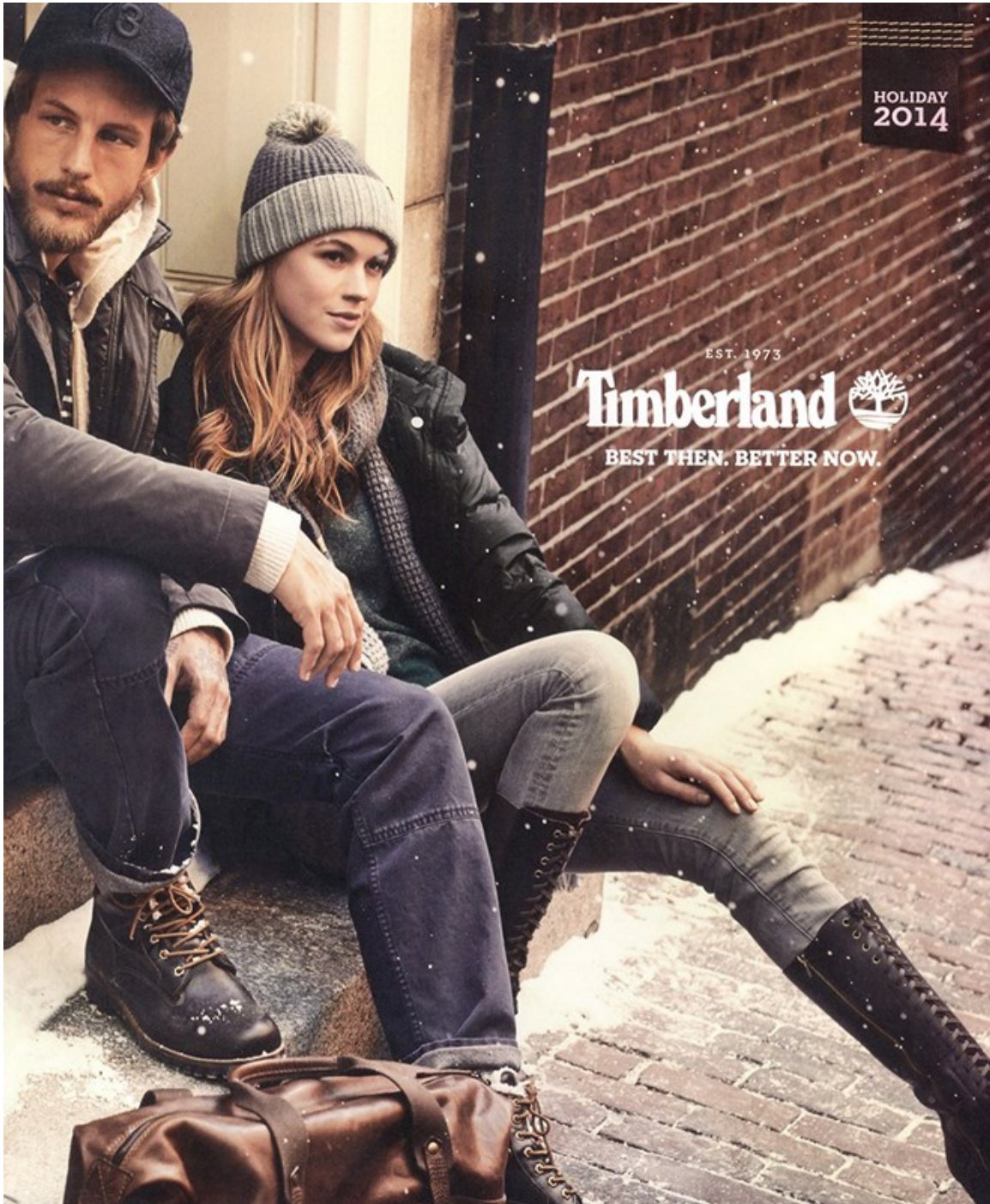
# Art Department



Mark Chandler

[www.art-dept.com](http://www.art-dept.com)

# Art Department



Mark Chandler

[www.art-dept.com](http://www.art-dept.com)



# Art Department



Mark Chandler

[www.art-dept.com](http://www.art-dept.com)

# Art Department



Mark Chandler

[www.art-dept.com](http://www.art-dept.com)

# Art Department



Mark Chandler

[www.art-dept.com](http://www.art-dept.com)

# Art Department



Mark Chandler

[www.art-dept.com](http://www.art-dept.com)

# Art Department



Mark Chandler

[www.art-dept.com](http://www.art-dept.com)

# Art Department



**EDDIE.  
SET.  
GO.**

**THE TRAVEX™ AMPHIB CARGO SHORT**  
**STITCH FOR STITCH, THE BEST APPAREL FOR LAND & WATER.**  
*Active stretch and all-day performance in hot weather, from lakeside barbecues to extended river trips. Constructed with Flexion, our adaptable, breathable fabric that dries in a flash. Guide-built with Eddie Bauer kayaker Chris Korbatic.*

[EddieBauer.com/Travex](http://EddieBauer.com/Travex)

*Eddie Bauer*  
LIVE YOUR ADVENTURE

Mark Chandler

[www.art-dept.com](http://www.art-dept.com)

# Art Department



**EDDIE.  
SET.  
GO.™**

**THE TRAVEX® FREEDRY® COTTON LOOKOUT T-SHIRT**  
*The best-ever combo of technical performance and cotton comfort. Built with our exclusive FreeDry Cotton, a microfiber technology that dries faster during elevated activity. Natural fabric comfort, shrink-resistant material, and quick-dry performance that will never wash out. Guide built and tested with Eddie Bauer kayaker Ben Stookesberry.*

[EddieBauer.com/Travex](http://EddieBauer.com/Travex)

*Eddie Bauer*  
LIVE YOUR ADVENTURE

Mark Chandler

[www.art-dept.com](http://www.art-dept.com)

# Art Department

**EDDIE  
SET.  
GO.™**

*Eddie Bauer*  
LIVE YOUR ADVENTURE

**THE TRAVEX® ATLAS JACKET**  
The world's most versatile soft shell travel jacket. Built with breathable, weather-repellent stretch fabric, TripZip™ organization and one pocket for each continent. Guide built and trusted by adventure travel guide Julia Dimon.

[EddieBauer.com/Travex](http://EddieBauer.com/Travex)

Mark Chandler

[www.art-dept.com](http://www.art-dept.com)



# Art Department



The advertisement features a large, dark brown jacket in the upper right corner. The background is a scenic landscape with green mountains and a blue sky. The text "EDDIE. SET. GO." is prominently displayed in large, white, bold letters across the middle. In the lower right, the Eddie Bauer logo and tagline "LIVE YOUR ADVENTURE" are visible. Below the logo, there is a description of the jacket and the website "EddieBauer.com/Travex".

**EDDIE.  
SET.  
GO.™**

*Eddie Bauer*  
LIVE YOUR ADVENTURE

**THE TRAVEX® ATLAS JACKET**  
The world's most versatile soft shell travel jacket. Built with breathable, weather-repellent stretch fabric, TripZip™ organization and one pocket for each continent. Guide-built and trusted by adventure travel guide Trevor Frost.

[EddieBauer.com/Travex](http://EddieBauer.com/Travex)

Mark Chandler

[www.art-dept.com](http://www.art-dept.com)

# Art Department

**EDDIE.  
SET.  
GO.**

**THE TRAVEX<sup>®</sup> AMPHIB SKIRT**  
**STITCH FOR STITCH, THE BEST APPAREL FOR LAND & WATER.**  
*Active stretch and all-day performance in hot-weather, from stand-up sessions to trailside swims. Constructed with Flexion, our liberating, breathable fabric that dries in a flash. Guide-built with Eddie Bauer freeskier Lexi du Pont.*

[EddieBauer.com/Travex](http://EddieBauer.com/Travex)

*Eddie Bauer*  
LIVE YOUR ADVENTURE

Mark Chandler

[www.art-dept.com](http://www.art-dept.com)

# Art Department



Mark Chandler

[www.art-dept.com](http://www.art-dept.com)

# Art Department



Mark Chandler

[www.art-dept.com](http://www.art-dept.com)

# Art Department



Mark Chandler

[www.art-dept.com](http://www.art-dept.com)

# Art Department



MENSWEAR: ALI C. OWING, NOTTEGA VENETA, SHOEZ, BROOKS BROTHERS.  
MODELS: JEN PHILIPPI, MADONNA AND DAN BARNER.

Purple reign. Gown with shawl, \$995, Badgley Mischka Platinum, Neiman Marcus; 888-888-4757. Earrings, \$3,000, and necklace, \$12,000, Mastoloni Pearls, mastoloni.com. Bracelets, \$1,300-\$2,500, Ahward Vahan, vahanjewelry.com. Clutch, \$3,295, Judith Leiber, 212-223-2999. Sandals, \$535, Jimmy Choo, 866-J-CHOO-US.

## Mark Chandler

[www.art-dept.com](http://www.art-dept.com)

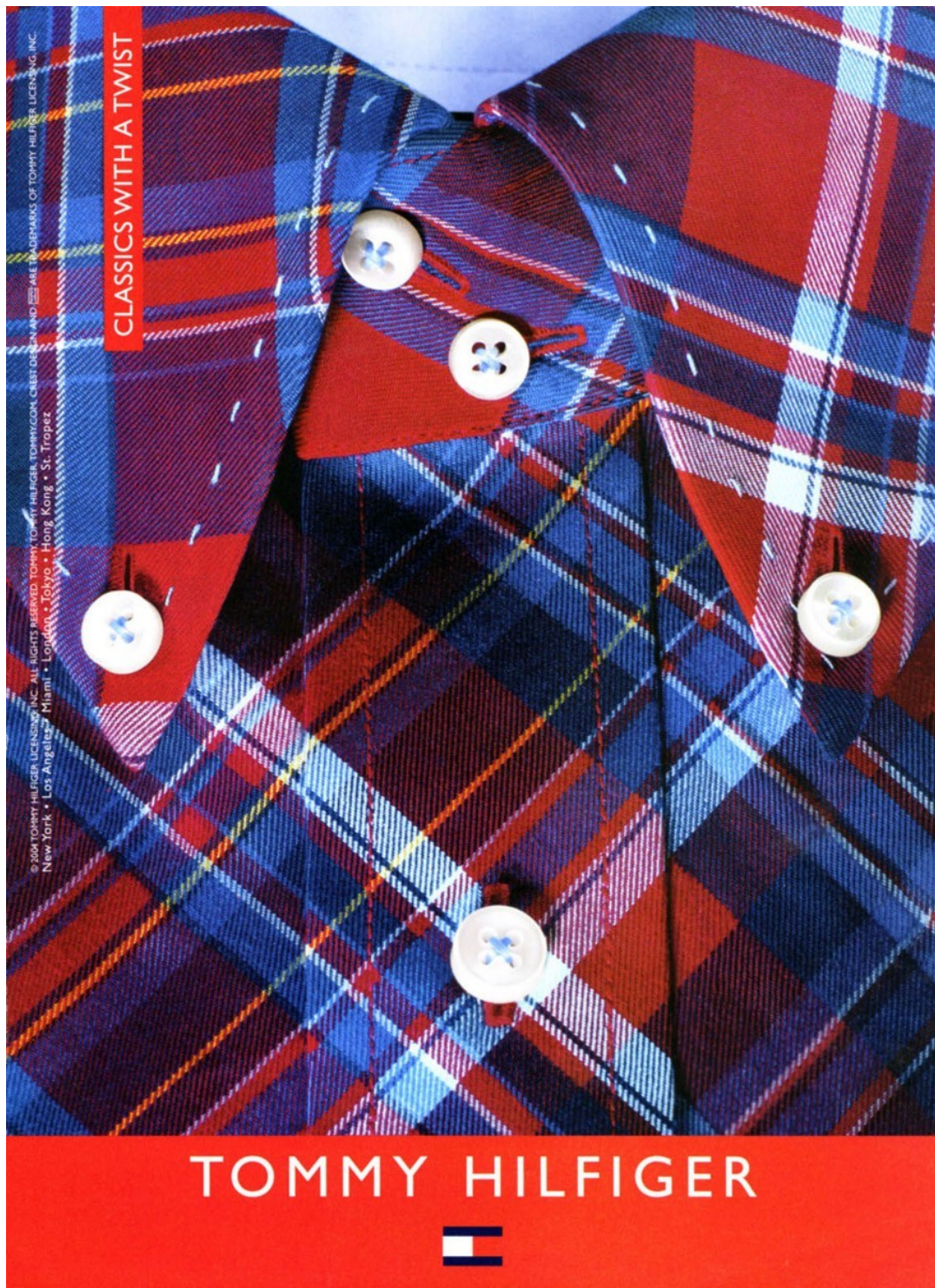
# Art Department



Mark Chandler

[www.art-dept.com](http://www.art-dept.com)

# Art Department



Mark Chandler

[www.art-dept.com](http://www.art-dept.com)



# Art Department



Mark Chandler

[www.art-dept.com](http://www.art-dept.com)

# Art Department



  
VICTORINOX

ALTMONT™ 2.0 COLLECTION  
**YOUR URBAN ADVENTURE GEAR.**  
Guaranteed for life.

DÜSSELDORF | GENEVA | LONDON | NEW YORK

  
www.harrods.com  
Knightsbridge | London SW1X 0LZ, United Kingdom

SWISS ARMY KNIVES CUTLERY TIMEPIECES TRAVEL GEAR FASHION FRAGRANCES | WWW.VICTORINOX.COM

Mark Chandler

[www.art-dept.com](http://www.art-dept.com)

# Art Department





VICTORINOX

ALTMONT™ 2.0 COLLECTION  
**YOUR URBAN ADVENTURE GEAR.**  
Guaranteed for life.

DÜSSELDORF | GENEVA | LONDON | NEW YORK



www.harrods.com  
Knightbridge | London SW1X 0LZ, United Kingdom

SWISS ARMY KNIVES CUTLERY TIMEPIECES TRAVEL GEAR FASHION FRAGRANCES | WWW.VICTORINOX.COM

## Mark Chandler

[www.art-dept.com](http://www.art-dept.com)

# Art Department





VICTORINOX

ARCHITECTURE® 3.0 BUSINESS CASE COLLECTION

**CLASSIC STYLE & SUPERIOR ORGANIZATION.**

And backed by a lifetime guarantee that even covers common carrier damage.

DÜSSELDORF | GENEVA | LONDON | NEW YORK



www.harrods.com  
Knightsbridge | London SW1X 0LZ, United Kingdom

SWISS ARMY KNIVES | CUTLERY | TIMEPIECES | TRAVEL GEAR | FASHION | FRAGRANCES | WWW.VICTORINOX.COM

## Mark Chandler

[www.art-dept.com](http://www.art-dept.com)

# Art Department





VICTORINOX

AVOLVE™ COLLECTION

**360° MANEUVERABILITY,  
ZERO WEIGHT-IN-HAND.**

Guaranteed for life.

DÜSSELDORF | GENEVA | LONDON | NEW YORK



[www.harrods.com](http://www.harrods.com)

Knightsbridge | London SW1X 0LZ, United Kingdom

SWISS ARMY KNIVES CUTLERY TIMEPIECES TRAVEL GEAR FASHION FRAGRANCES | [WWW.VICTORINOX.COM](http://WWW.VICTORINOX.COM)

## Mark Chandler

[www.art-dept.com](http://www.art-dept.com)

# Art Department



**VICTORINOX**

MOBILIZER NXT® 5.0 COLLECTION  
**ENGINEERED FOR PERFORMANCE.**  
And backed by a lifetime guarantee that even covers common carrier damage.

DUSSELDORF | GENEVA | LONDON | NEW YORK

The Planet Traveller | [www.planetraveller.com](http://www.planetraveller.com)  
04-15 Paragon | 04-19 Ion Orchard | 03-113 Marina Square

SWISS ARMY KNIVES | CUTLERY | TIMEPIECES | TRAVEL GEAR | FASHION | FRAGRANCES | [WWW.VICTORINOX.COM](http://WWW.VICTORINOX.COM)

## Mark Chandler

[www.art-dept.com](http://www.art-dept.com)

# Art Department



**VICTORINOX**

CH-97™ 2.0 COLLECTION  
**FOR THE ADVENTURER IN US ALL.**  
Guaranteed for life.

DÜSSELDORF | GENEVA | LONDON | NEW YORK

The Planet Traveller | [www.planetraveller.com](http://www.planetraveller.com)  
04-15 Paragon | 04-19 Ion Orchard | 03-113 Marina Square

SWISS ARMY KNIVES | CUTLERY | TIMEPIECES | TRAVEL GEAR | FASHION | FRAGRANCES | [WWW.VICTORINOX.COM](http://WWW.VICTORINOX.COM)

## Mark Chandler

[www.art-dept.com](http://www.art-dept.com)

# Art Department



Mark Chandler

[www.art-dept.com](http://www.art-dept.com)



# Art Department



Mark Chandler

[www.art-dept.com](http://www.art-dept.com)

# Art Department

*Eddie Bauer*



Mark Chandler

[www.art-dept.com](http://www.art-dept.com)

# Art Department

*Eddie Bauer*



Mark Chandler

[www.art-dept.com](http://www.art-dept.com)

# Art Department



Mark Chandler

[www.art-dept.com](http://www.art-dept.com)

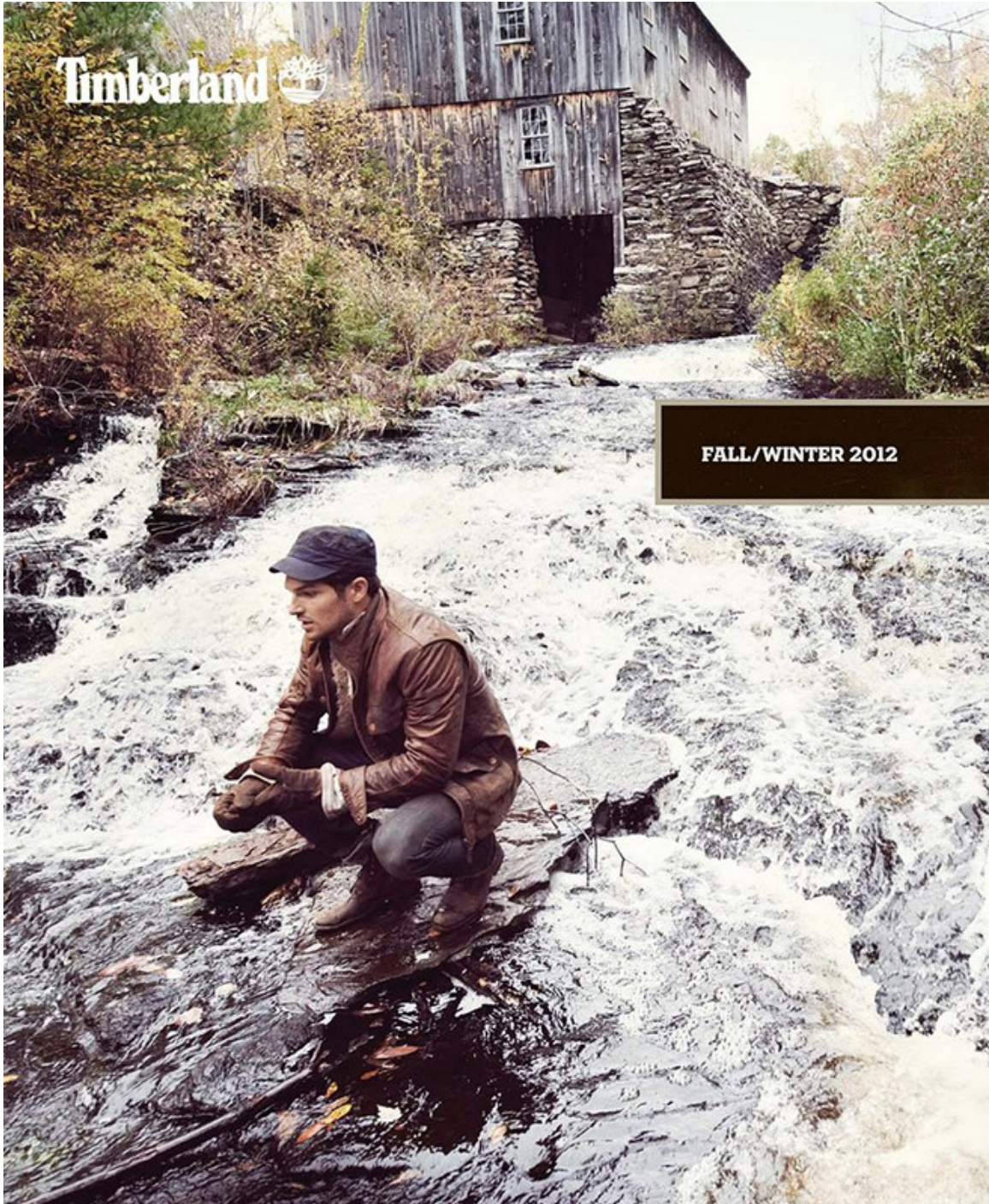
# Art Department



Mark Chandler

[www.art-dept.com](http://www.art-dept.com)

# Art Department



Mark Chandler

[www.art-dept.com](http://www.art-dept.com)

# Art Department

## ECO-MINDED BRITISH MILLERAIN™ STAYWAX™ FABRIC

Cotton fabric, impregnated with wax to provide natural water repellency.



Earthkeepers® Elite Leather  
Abington Jacket  
Cocoa, 1038/

## Mark Chandler

[www.art-dept.com](http://www.art-dept.com)

# Art Department



Mark Chandler

[www.art-dept.com](http://www.art-dept.com)



# Art Department



Mark Chandler

[www.art-dept.com](http://www.art-dept.com)

# Art Department



Mark Chandler

[www.art-dept.com](http://www.art-dept.com)

# Art Department



Mark Chandler

[www.art-dept.com](http://www.art-dept.com)

# Art Department



Mark Chandler

[www.art-dept.com](http://www.art-dept.com)

# Art Department



Mark Chandler

[www.art-dept.com](http://www.art-dept.com)

# Art Department



Mark Chandler

[www.art-dept.com](http://www.art-dept.com)

# Art Department



**READY  
FOR  
ANYTHING**

Fall 2011

WOMEN'S LOOK BOOK

Timberland 

Mark Chandler

[www.art-dept.com](http://www.art-dept.com)

# Art Department



Mark Chandler

[www.art-dept.com](http://www.art-dept.com)



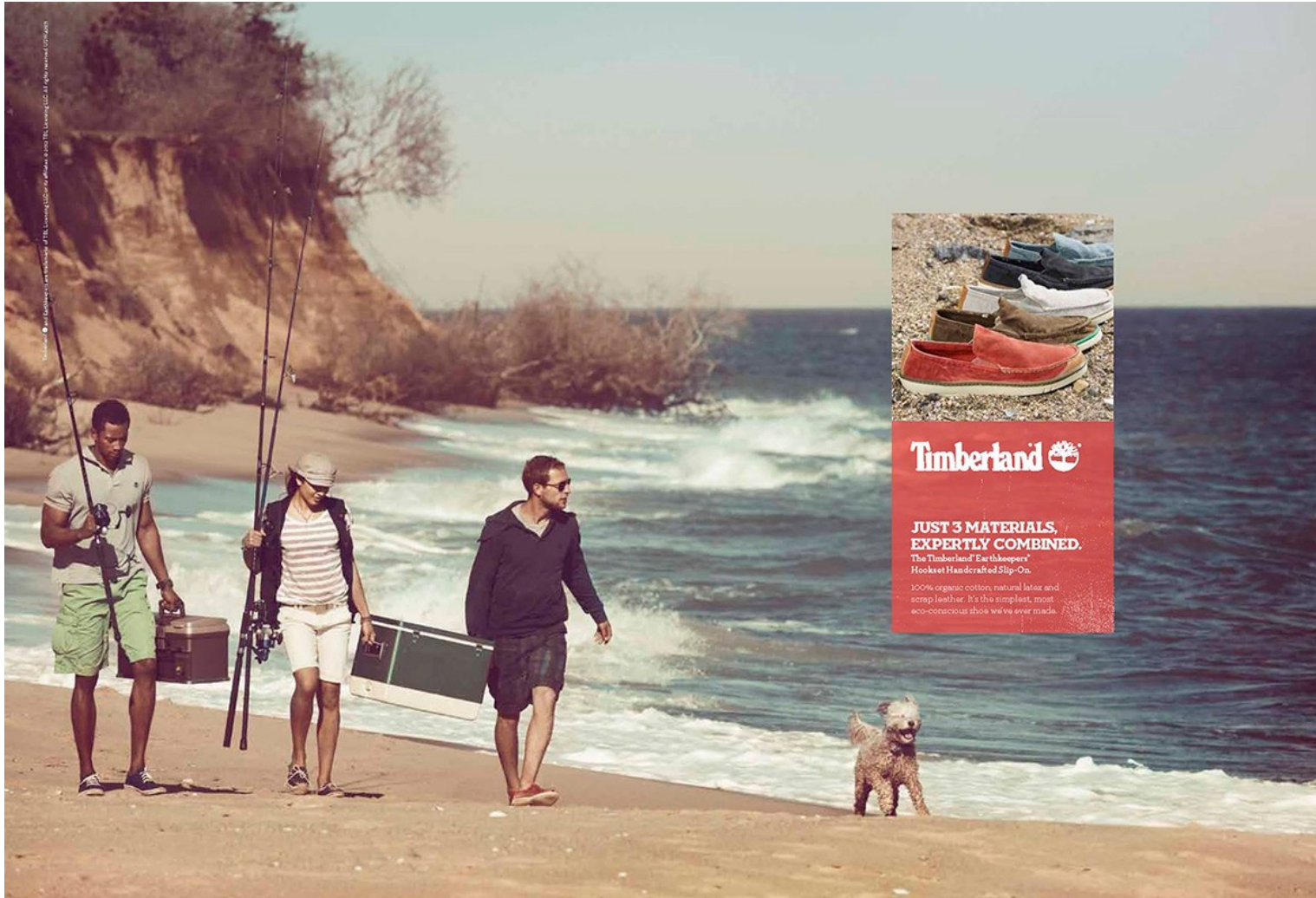
# Art Department



Mark Chandler

[www.art-dept.com](http://www.art-dept.com)

# Art Department



Mark Chandler

[www.art-dept.com](http://www.art-dept.com)

# Art Department



**WHAT'S  
IN YOUR  
GEAR?**

Earthkeepers® Heritage Boat Shoe.  
Famous grip now with 42% Green Rubber™.  
Waterproof Tech Wharf Bomber Jacket.  
3 layers of protection. Classic designs that  
help you tread lighter and comfortably on  
the earth.  
[timberland.com](http://timberland.com)

**Timberland**  
NATURE NEEDS HEROES™

Timberland, the tree logo, Earthkeepers, Green Rubber, and the Wharf Bomber Jacket are trademarks of Timberland Company. © 2013 Timberland Company. All rights reserved.

Mark Chandler

[www.art-dept.com](http://www.art-dept.com)

# Art Department



Timberland and ® are trademarks of TBC, L.L. © 2010 TBC, L.L. All rights reserved.

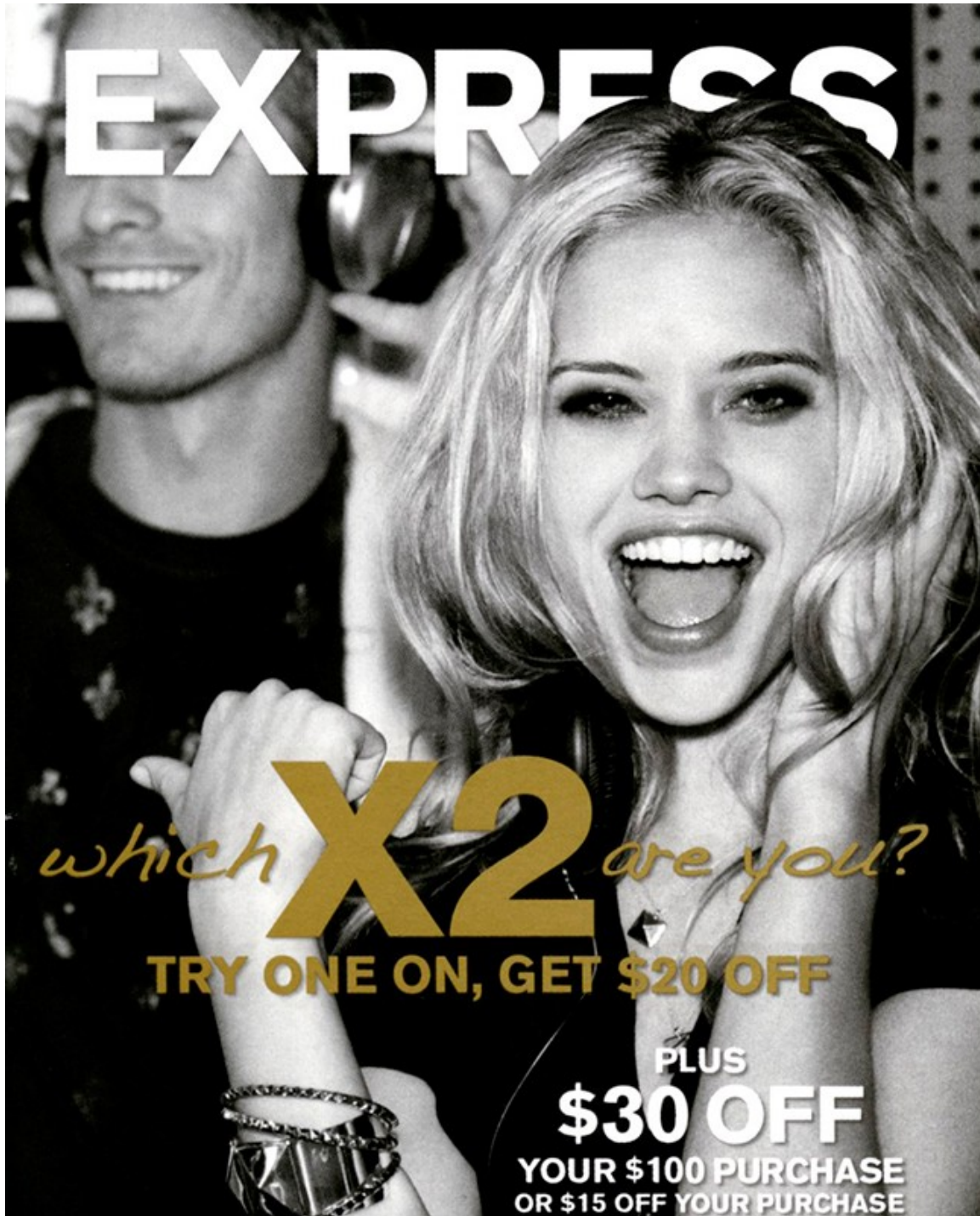
**Timberland** 

[WOMENS.TIMBERLAND.COM](http://WOMENS.TIMBERLAND.COM)

Mark Chandler

[www.art-dept.com](http://www.art-dept.com)

# Art Department



**EXPRESS**

*which* **X2** *are you?*

**TRY ONE ON, GET \$20 OFF**

**PLUS**  
**\$30 OFF**  
**YOUR \$100 PURCHASE**  
**OR \$15 OFF YOUR PURCHASE**

Mark Chandler

[www.art-dept.com](http://www.art-dept.com)

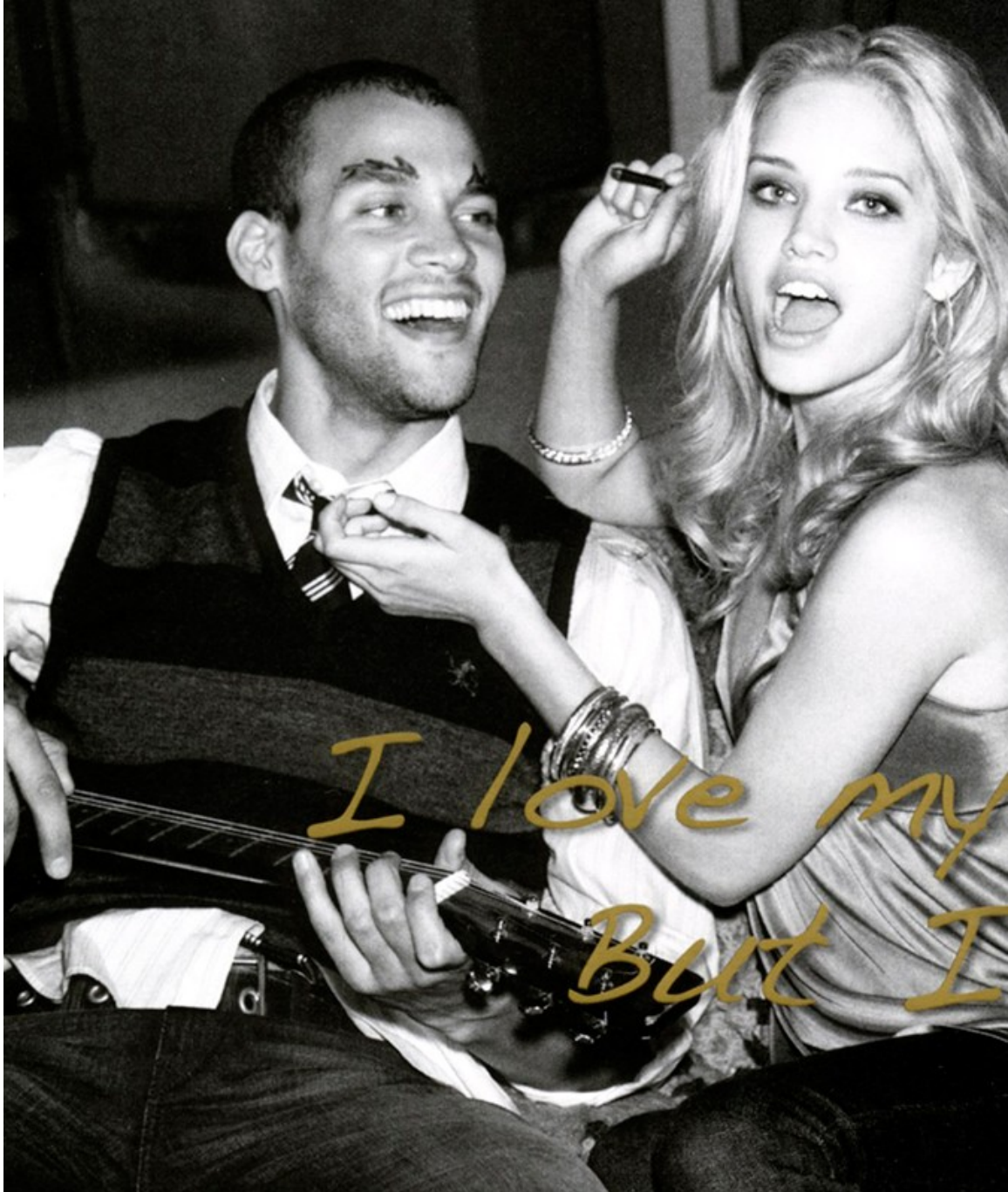
# Art Department



Mark Chandler

[www.art-dept.com](http://www.art-dept.com)

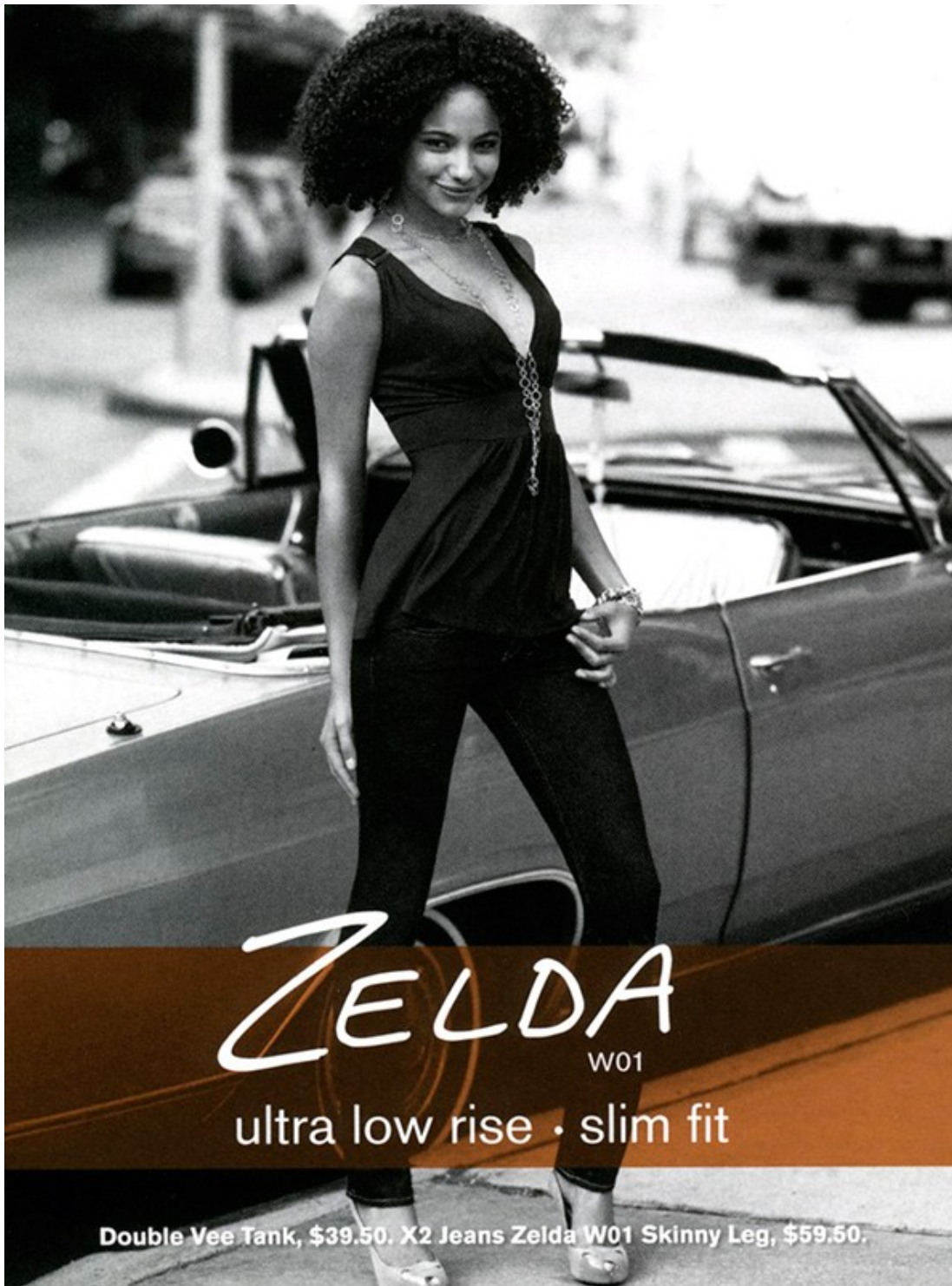
# Art Department



Mark Chandler

[www.art-dept.com](http://www.art-dept.com)

# Art Department



**ZELDA**  
W01  
ultra low rise · slim fit

Double Vee Tank, \$39.50. X2 Jeans Zelda W01 Skinny Leg, \$59.50.

Mark Chandler

[www.art-dept.com](http://www.art-dept.com)



# Art Department



Mark Chandler

[www.art-dept.com](http://www.art-dept.com)

# Art Department



Mark Chandler

[www.art-dept.com](http://www.art-dept.com)

# Art Department



Mark Chandler

[www.art-dept.com](http://www.art-dept.com)

# Art Department



Mark Chandler

[www.art-dept.com](http://www.art-dept.com)

# Art Department



Mark Chandler

[www.art-dept.com](http://www.art-dept.com)

# Art Department



Mark Chandler

[www.art-dept.com](http://www.art-dept.com)

# Art Department



BRAHMIN  
[brahmin.com](http://brahmin.com)

Mark Chandler

[www.art-dept.com](http://www.art-dept.com)

# Art Department



Mark Chandler

[www.art-dept.com](http://www.art-dept.com)



# Art Department



**NEW HerbaShine™**  
COLOR CREME WITH BAMBOO EXTRACT

**BRILLIANT COLOR**  
THAT DEFIES DAMAGE

**A BAMBOO BREAKTHROUGH**  
HerbaShine fortifies hair to fight damage. Radiant, shiny color. Not a gray in sight. Lasts through 28 shampoos.

Fortified color. Certified brilliant.

AMMONIA FREE

**GARNIER**  
NEW HerbaShine™  
COLOR CREME WITH BAMBOO EXTRACT  
AMMONIA FREE

only 10 minutes

18 RADIANT SHADES

Take care.  
**GARNIER**  
Get Fortified Color @ Garnier.com

Silvia shines in shade 645 • Copper Mahogany Brown

Mark Chandler

[www.art-dept.com](http://www.art-dept.com)

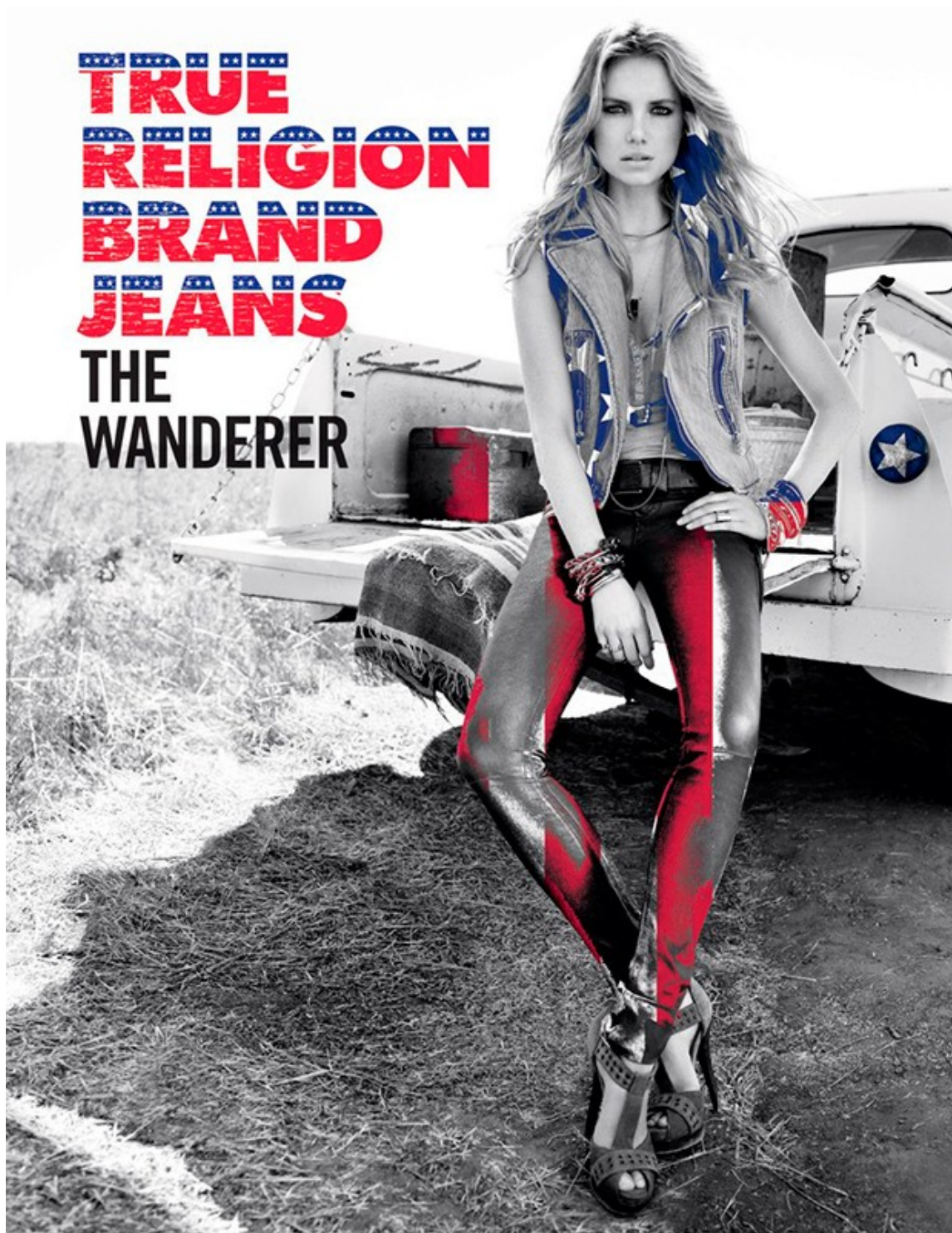
# Art Department



Mark Chandler

[www.art-dept.com](http://www.art-dept.com)

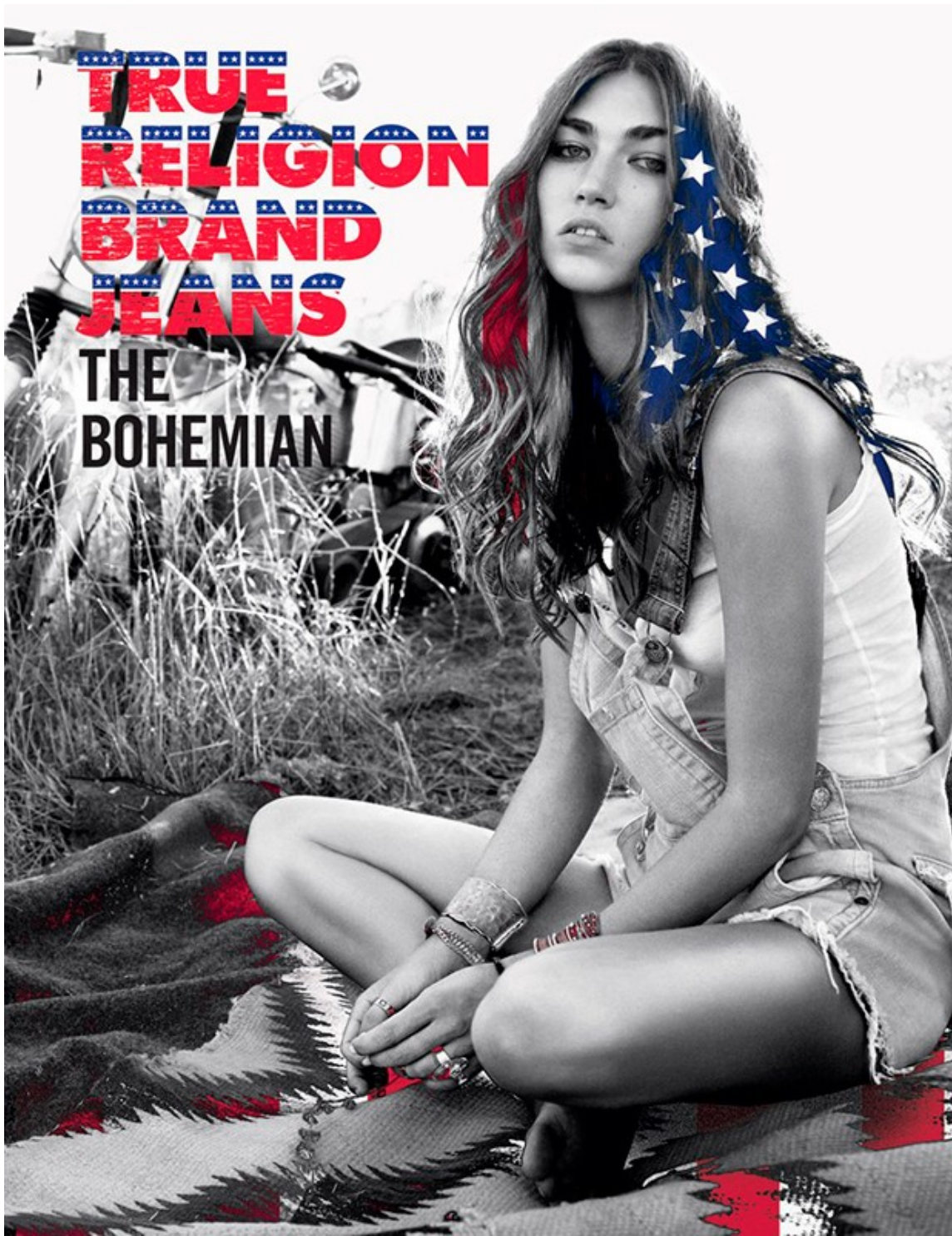
# Art Department



Mark Chandler

[www.art-dept.com](http://www.art-dept.com)

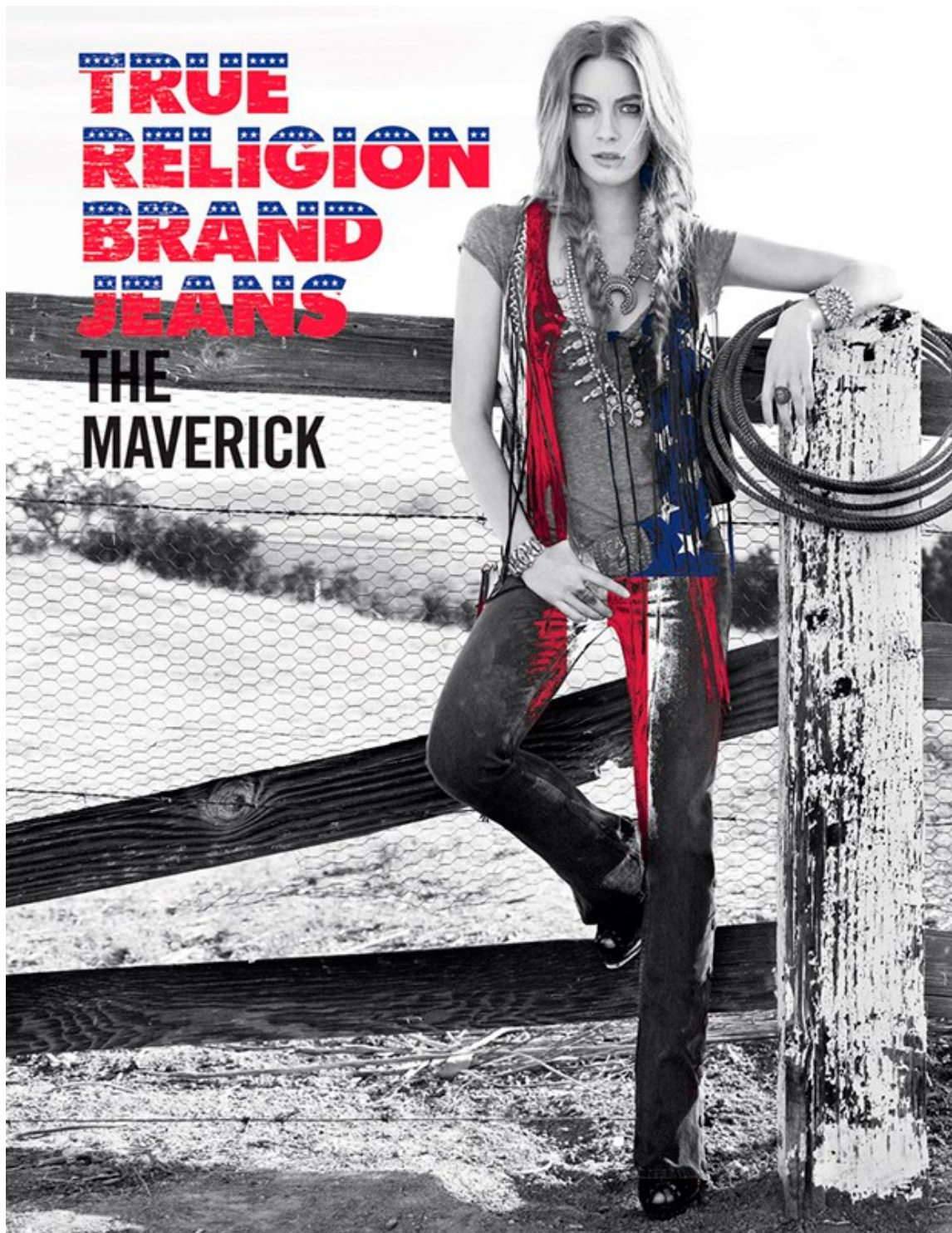
# Art Department



Mark Chandler

[www.art-dept.com](http://www.art-dept.com)

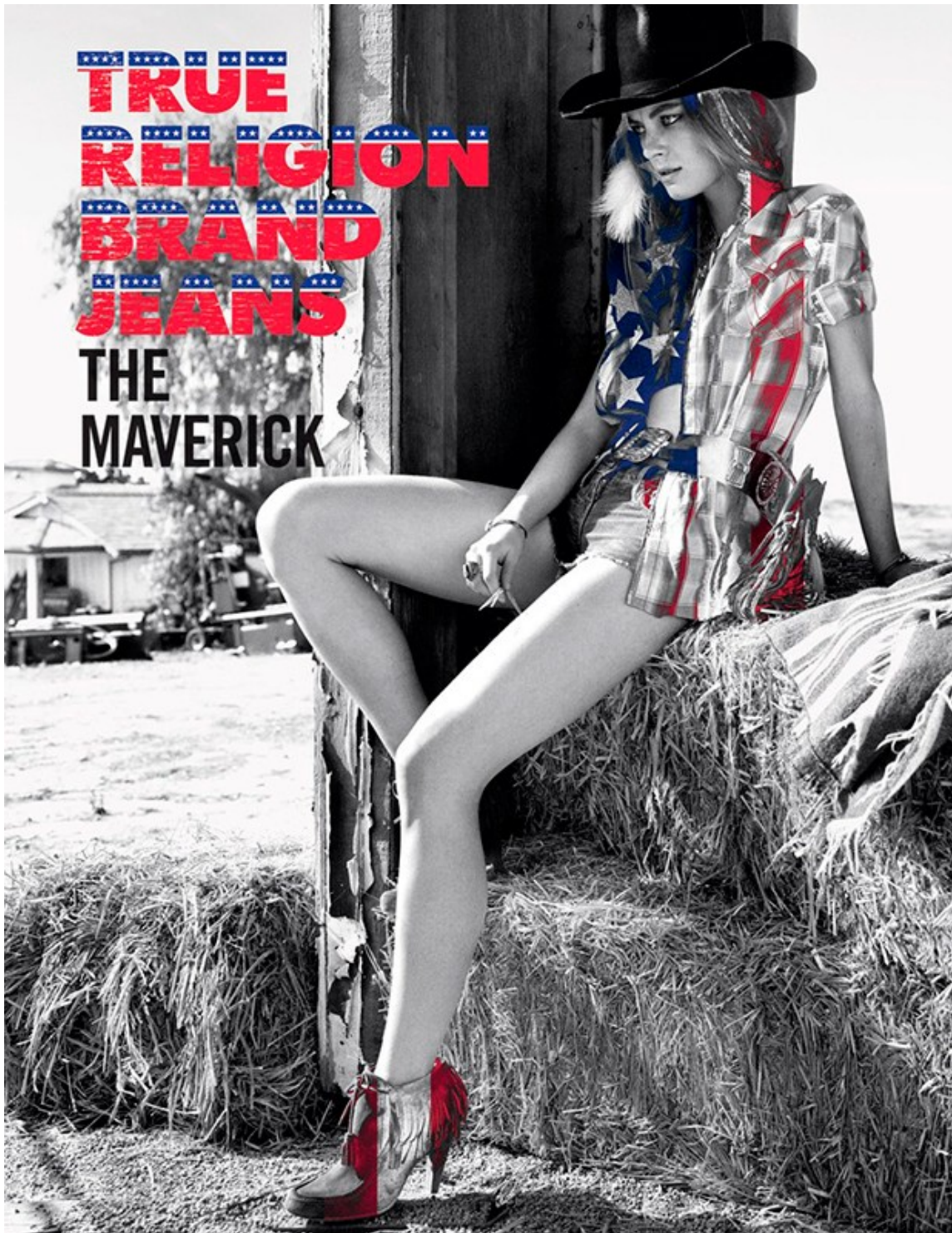
# Art Department



Mark Chandler

[www.art-dept.com](http://www.art-dept.com)

# Art Department



Mark Chandler

[www.art-dept.com](http://www.art-dept.com)

# Art Department



Mark Chandler

[www.art-dept.com](http://www.art-dept.com)

# Art Department

Special Advertising Section



**ON THE HOUSE**  
BOTTLE SERVICE COMES HOME  
JOIN ACTOR GAEL GARCÍA BERNAL AND FRIENDS AS THEY GATHER ON A  
PICTURESQUE WEST VILLAGE TERRACE FOR AN EVENING OF SUMMER COCKTAILS

Mark Chandler

[www.art-dept.com](http://www.art-dept.com)



# Art Department



Mark Chandler

[www.art-dept.com](http://www.art-dept.com)

# Art Department

Special Advertising Section

## ON THE TERRACE WITH EDWARD BURNS

FILMMAKER AND ACTOR EDWARD BURNS ENJOYS GETTING TOGETHER WITH FRIENDS, OLD AND NEW IN NEW YORK'S SOUTHAMPTON. HERE HE SHARES A FEW OF HIS ENTERTAINING PRINCIPLES THAT MAKE EVERYDAY OCCASIONS EXTRA-SPECIAL.

### THE GUEST LIST

The secret to a great soirée lies in the guest list. "I hang out with so many different groups of people," Edward says. "It's great when these worlds mingle and my friends become friends."

### THE MUSIC

Play to your guests, and let the party unfold naturally. "When I have friends over who have families, I'll play a more chilled out singer-songwriter mix. But when the last of my single friends arrive, the alternative and classic rock go on."

### THE FOOD

Keep things simple so you're able to enjoy your own party. Paying attention to location comes into play, too. "If I'm entertaining at the beach, my specialty is Long Island fluke, caught right out of the water," Edward says.

### THE POUR

Simple cocktails are an easy way for a host to make a great impression. Edward serves GREY GOOSE Le Citron flavored vodka over ice, with a splash of soda and a squeeze of lime. "There is a confidence in simplicity," Edward says, "which is something I find very refreshing."

VISIT [GREYGOOSE.COM](http://GREYGOOSE.COM) TO LEARN HOW TO MAKE MORE SIMPLE COCKTAILS.

"The perfect evening is one that reminds you that you don't need to leave home to have a good time."

— Edward Burns



Furniture by Richard Schultz Design at [richardschultz.com](http://richardschultz.com) @eburns

## Mark Chandler

[www.art-dept.com](http://www.art-dept.com)

# Art Department

**Tucker**

New York designer creates eye-catching prints and go-anywhere styles at a savings that's gorgeous.  
**only at Target – september 12**

Tucker for Target  
September 12 - October 17  
Starting at \$19.99  
[Target.com/tucker](http://Target.com/tucker)

Mark Chandler

[www.art-dept.com](http://www.art-dept.com)

# Art Department



Tucker for Target®  
September 12 – October 17  
Starting at \$19.99  
Target.com/tucker

## Mark Chandler

[www.art-dept.com](http://www.art-dept.com)


# Art Department



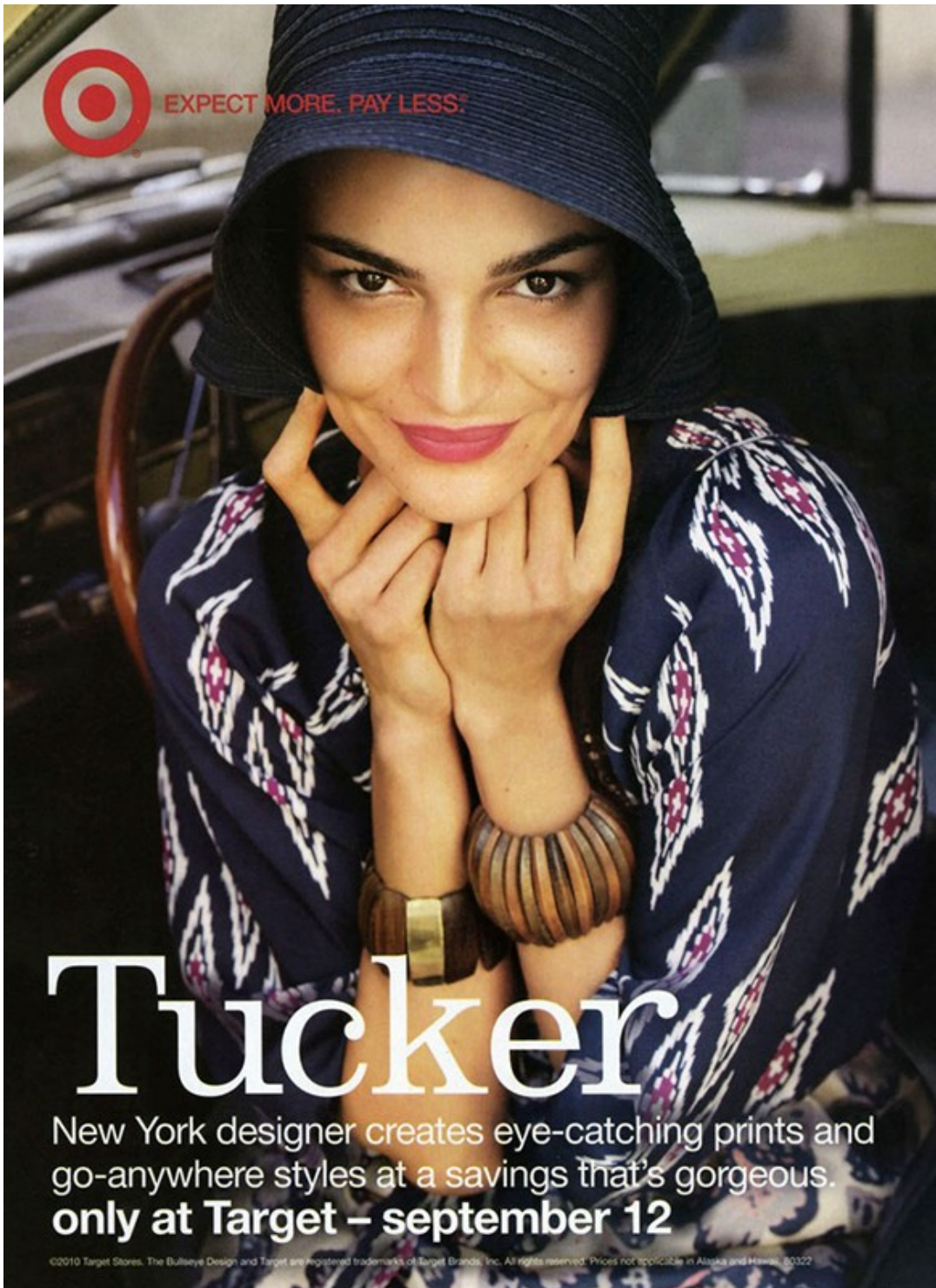
Mark Chandler

[www.art-dept.com](http://www.art-dept.com)

# Art Department



EXPECT MORE. PAY LESS.®



# Tucker

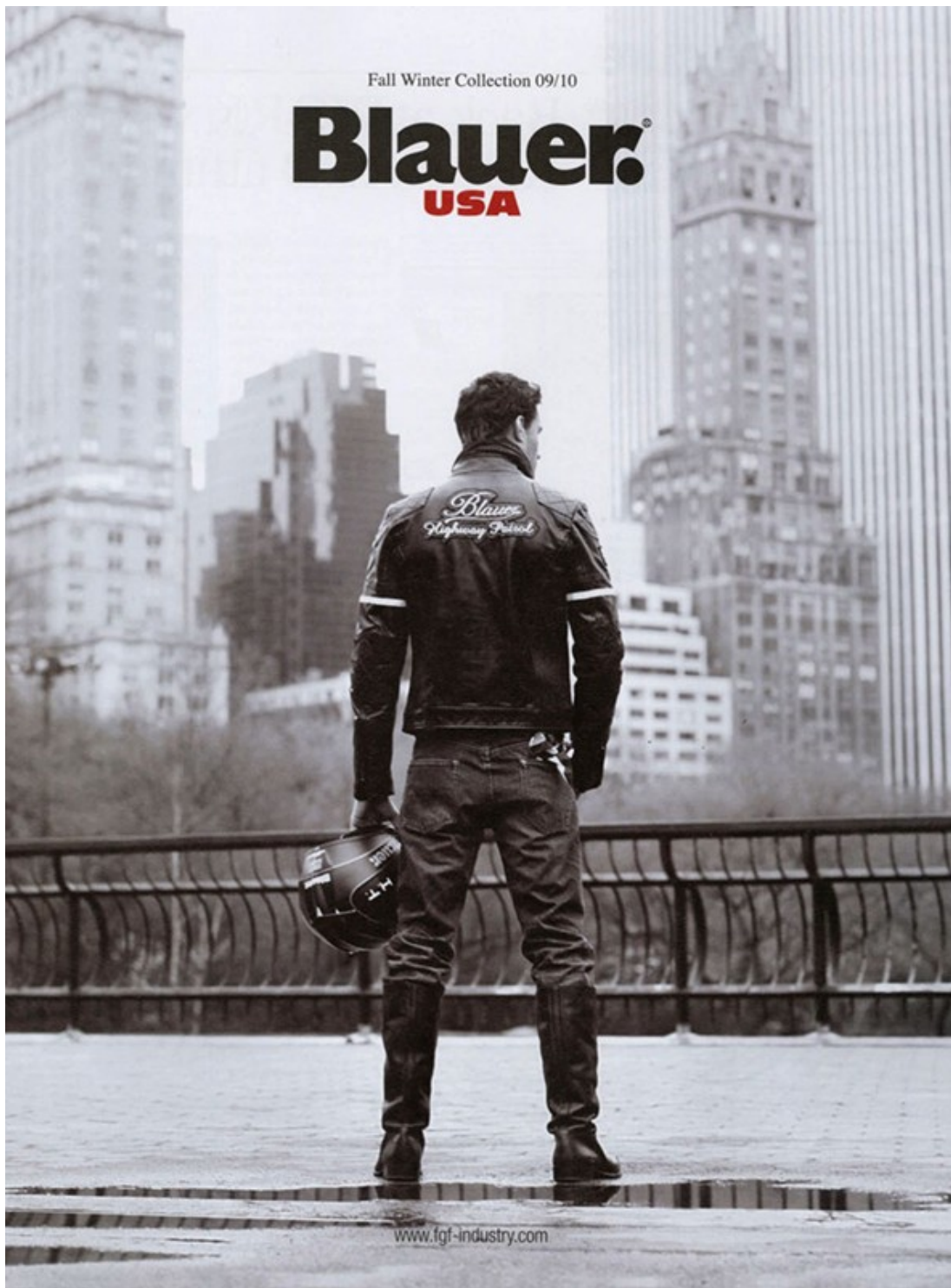
New York designer creates eye-catching prints and go-anywhere styles at a savings that's gorgeous.  
**only at Target – september 12**

©2010 Target Stores. The Bullseye Design and Target are registered trademarks of Target Brands, Inc. All rights reserved. Prices not applicable in Alaska and Hawaii. 00322

Mark Chandler

[www.art-dept.com](http://www.art-dept.com)

# Art Department



Mark Chandler

[www.art-dept.com](http://www.art-dept.com)

# Art Department



Mark Chandler

[www.art-dept.com](http://www.art-dept.com)



# Art Department



Mark Chandler

[www.art-dept.com](http://www.art-dept.com)

# Art Department



Mark Chandler

[www.art-dept.com](http://www.art-dept.com)

# Art Department



Mark Chandler

[www.art-dept.com](http://www.art-dept.com)

# Art Department



Mark Chandler

[www.art-dept.com](http://www.art-dept.com)

# Art Department



Mark Chandler

[www.art-dept.com](http://www.art-dept.com)

# Art Department



Mark Chandler

[www.art-dept.com](http://www.art-dept.com)

# Art Department



Mark Chandler

[www.art-dept.com](http://www.art-dept.com)

# Art Department



Mark Chandler

[www.art-dept.com](http://www.art-dept.com)



# Art Department



Mark Chandler

[www.art-dept.com](http://www.art-dept.com)

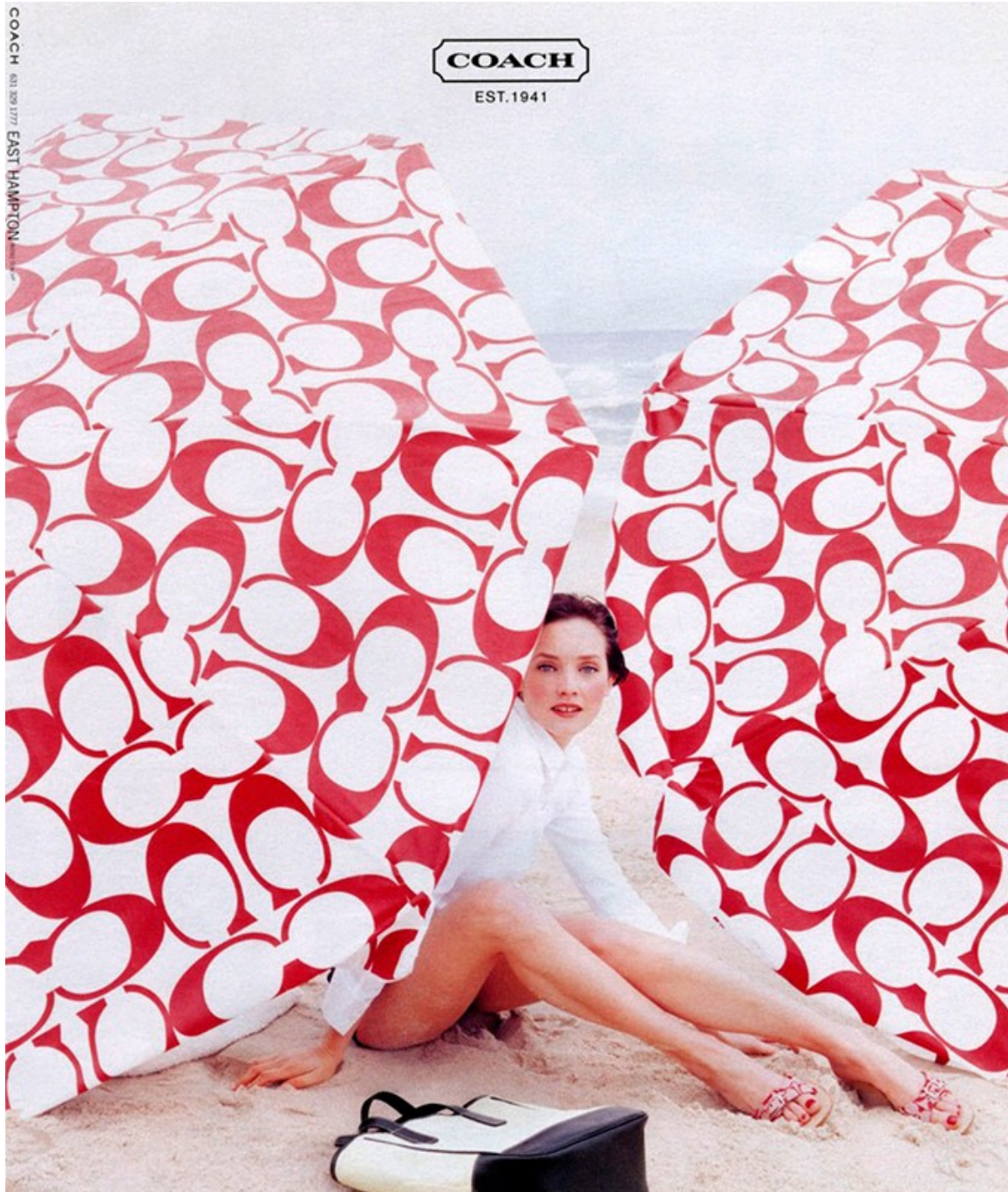
# Art Department



Mark Chandler

[www.art-dept.com](http://www.art-dept.com)

# Art Department



Mark Chandler

[www.art-dept.com](http://www.art-dept.com)

# Art Department



Mark Chandler

[www.art-dept.com](http://www.art-dept.com)