

Art Department



Mark Chandler

www.art-dept.com

Art Department



Mark Chandler

www.art-dept.com

Art Department



Mark Chandler

www.art-dept.com

Art Department



Mark Chandler

www.art-dept.com

Art Department



Mark Chandler

www.art-dept.com

Art Department



Mark Chandler

www.art-dept.com

Art Department



Mark Chandler

www.art-dept.com

Art Department



Mark Chandler

www.art-dept.com

Art Department



Mark Chandler

www.art-dept.com

Art Department



Mark Chandler

www.art-dept.com

Art Department



Mark Chandler

www.art-dept.com

Art Department



Mark Chandler

www.art-dept.com

Art Department



Mark Chandler

www.art-dept.com

Art Department



Mark Chandler

www.art-dept.com

Art Department



Mark Chandler

www.art-dept.com

Art Department



Mark Chandler

www.art-dept.com

Art Department



Mark Chandler

www.art-dept.com

Art Department



Mark Chandler

www.art-dept.com

Art Department



Mark Chandler

www.art-dept.com

Art Department



Mark Chandler

www.art-dept.com

Art Department



Mark Chandler

www.art-dept.com

Art Department



Mark Chandler

www.art-dept.com

Art Department



Mark Chandler

www.art-dept.com

Art Department



Mark Chandler

www.art-dept.com

Art Department



Mark Chandler

www.art-dept.com

Art Department



Mark Chandler

www.art-dept.com

Art Department



Mark Chandler

www.art-dept.com

Art Department



Mark Chandler

www.art-dept.com

Art Department



Mark Chandler

www.art-dept.com

Art Department



Mark Chandler

www.art-dept.com

Art Department



Mark Chandler

www.art-dept.com

Art Department



Mark Chandler

www.art-dept.com

Art Department



Mark Chandler

www.art-dept.com

Art Department



Mark Chandler

www.art-dept.com

Art Department



Mark Chandler

www.art-dept.com

Art Department



Mark Chandler

www.art-dept.com

Art Department



Mark Chandler

www.art-dept.com

Art Department



Mark Chandler

www.art-dept.com

Art Department



Mark Chandler

www.art-dept.com

Art Department



Mark Chandler

www.art-dept.com

Art Department



Mark Chandler

www.art-dept.com

Art Department



Mark Chandler

www.art-dept.com

Art Department



Mark Chandler

www.art-dept.com

Art Department

LA MER



Mark Chandler

www.art-dept.com

Art Department

LA MER



Mark Chandler

www.art-dept.com

Art Department



Mark Chandler

www.art-dept.com

Art Department



Mark Chandler

www.art-dept.com

Art Department



Mark Chandler

www.art-dept.com

Art Department



Mark Chandler

www.art-dept.com

Art Department



Mark Chandler

www.art-dept.com

Art Department



Mark Chandler

www.art-dept.com

Art Department



Mark Chandler

www.art-dept.com

Art Department



Mark Chandler

www.art-dept.com

Art Department



Mark Chandler

www.art-dept.com

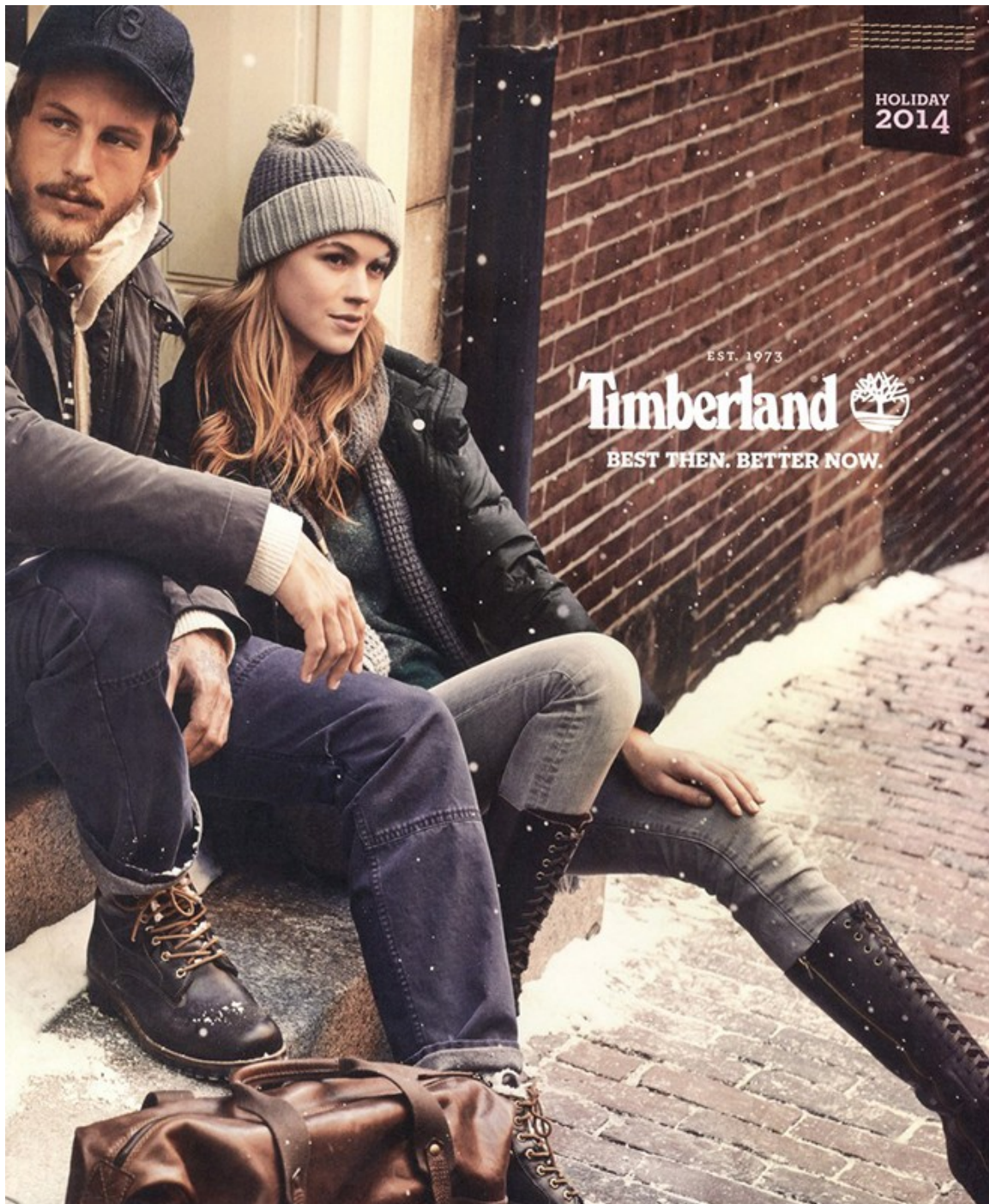
Art Department



Mark Chandler

www.art-dept.com

Art Department



Mark Chandler

www.art-dept.com

Art Department



Mark Chandler

www.art-dept.com

Art Department



Mark Chandler

www.art-dept.com

Art Department



Mark Chandler

www.art-dept.com

Art Department



Mark Chandler

www.art-dept.com

Art Department



Mark Chandler

www.art-dept.com

Art Department



THE TRAVEX® AMPHIB CARGO SHORT
STITCH FOR STITCH, THE BEST APPAREL FOR LAND & WATER.
Active stretch and all-day performance in hot weather, from lakeside
barbeques to extended river trips. Constructed with Flexion, our
adaptable, breathable fabric that dries in a flash. Guide-built with
Eddie Bauer kayaker Chris Korbatic.

EddieBauer.com/Travex

Eddie Bauer
LIVE YOUR ADVENTURE

Mark Chandler

www.art-dept.com

Art Department

An advertisement for Eddie Bauer's Travex Freedry Cotton Lookout T-shirt. The background is a photograph of a man in a bright yellow-green t-shirt and a blue backpack, standing on a rocky mountain peak under a clear blue sky. The text 'EDDIE. SET. GO.' is overlaid in large, white, sans-serif font. Below this, a yellow banner contains the product name and description. The Eddie Bauer logo and tagline 'LIVE YOUR ADVENTURE' are in the bottom right corner. The website 'EddieBauer.com/Travex' is in the bottom left corner.

**EDDIE.
SET.
GO.**

THE TRAVEX® FREEDRY® COTTON LOOKOUT T-SHIRT
The best-ever combo of technical performance and cotton comfort. Built with our exclusive FreeDry Cotton, a microfiber technology that dries faster during elevated activity. Natural fabric comfort, shrink-resistant material, and quick-dry performance that will never wash out. Guide built and tested with Eddie Bauer kayaker Ben Stookesberry.

EddieBauer.com/Travex

Eddie Bauer
LIVE YOUR ADVENTURE

Mark Chandler

www.art-dept.com

Art Department



Mark Chandler

www.art-dept.com

Art Department



Mark Chandler

www.art-dept.com

Art Department



The advertisement features a collage of three images. The top image shows a woman in a purple and white long-sleeved shirt and blue shorts, kneeling on a blue and white paddleboard, holding a black paddle. The middle image shows two people standing in shallow water, one holding a yellow surfboard. The bottom image shows two people on paddleboards in a narrow, rocky channel. The text 'EDDIE. SET. GO.' is overlaid in large, white, sans-serif font. A yellow banner at the bottom left contains the product name and description. The Eddie Bauer logo and tagline are at the bottom right.

**EDDIE.
SET.
GO.**

THE TRAVEX® AMPHIB SKIRT
STITCH FOR STITCH, THE BEST APPAREL FOR LAND & WATER.
Active stretch and all-day performance in hot-weather, from stand-up sessions to trailside swims. Constructed with Flexion, our liberating, breathable fabric that dries in a flash. Guide-built with Eddie Bauer freeskier Lexi du Pont.

EddieBauer.com/Travex

Eddie Bauer
LIVE YOUR ADVENTURE

Mark Chandler

www.art-dept.com

Art Department



Mark Chandler

www.art-dept.com

Art Department



Mark Chandler

www.art-dept.com

Art Department



Mark Chandler

www.art-dept.com

Art Department



STYLING: ALI COTRINO, NOTTEGA VENETI, SHOES: BROOKS BROTHERS, MAKEUP: JEFFREY MADDISON AND TONY BARNES

Purple reign. Gown with shawl, \$995, Badgley Mischka Platinum. Neiman Marcus; 888-888-4757. Earrings, \$3,000, and necklace, \$12,000, Mastoloni Pearls, mastoloni.com. Bracelets, \$1,300-\$2,500, Ahward Vahan, vahanjewelry.com. Clutch, \$3,295, Judith Leiber, 212-223-2999. Sandals, \$535, Jimmy Choo, 866-J-CHOO-US.

Mark Chandler

www.art-dept.com

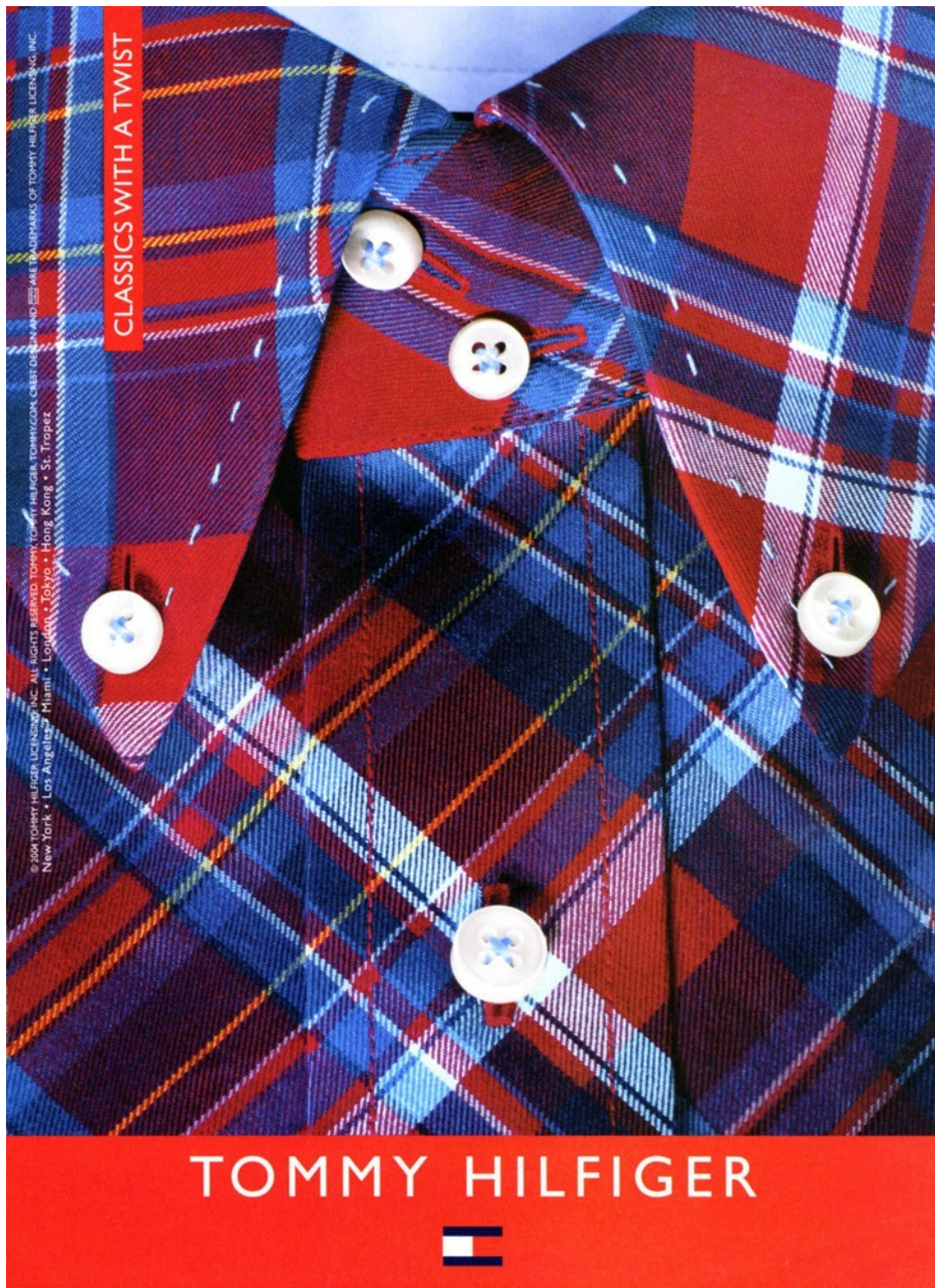
Art Department



Mark Chandler

www.art-dept.com

Art Department



Mark Chandler

www.art-dept.com

Art Department



Mark Chandler

www.art-dept.com

Art Department

A man in a grey sweater and light blue shirt is sitting at a white desk, looking down at a silver laptop. In the foreground, a red Victorinox bag with a black strap and a small Victorinox logo patch is lying on the desk. Next to the bag is a white notebook and a silver folder. The background is a blurred office setting.


VICTORINOX

ALTMONT™ 2.0 COLLECTION
YOUR URBAN ADVENTURE GEAR.
Guaranteed for life.

DÜSSELDORF | GENEVA | LONDON | NEW YORK


www.harrods.com
Knightsbridge | London SW1X 0LZ, United Kingdom

SWISS ARMY KNIVES CUTLERY TIMEPIECES TRAVEL GEAR FASHION FRAGRANCES | WWW.VICTORINOX.COM

Mark Chandler

www.art-dept.com

Art Department



VICTORINOX

ALTMONT™ 2.0 COLLECTION
YOUR URBAN ADVENTURE GEAR.
Guaranteed for life.

DÜSSELDORF | GENEVA | LONDON | NEW YORK

Harrods
www.harrods.com
Knightsbridge | London SW1X 0LZ, United Kingdom

SWISS ARMY KNIVES CUTLERY TIMEPIECES TRAVEL GEAR FASHION FRAGRANCES | WWW.VICTORINOX.COM

Mark Chandler

www.art-dept.com

Art Department




VICTORINOX

ARCHITECTURE® 3.0 BUSINESS CASE COLLECTION
CLASSIC STYLE & SUPERIOR ORGANIZATION.
And backed by a lifetime guarantee that even covers
common carrier damage.

DÜSSELDORF | GENEVA | LONDON | NEW YORK


www.harrods.com
Knightsbridge | London SW1X 0LZ, United Kingdom

SWISS ARMY KNIVES CUTLERY TIMEPIECES TRAVEL GEAR FASHION FRAGRANCES | WWW.VICTORINOX.COM

Mark Chandler

www.art-dept.com

Art Department



VICTORINOX

AVOLVE™ COLLECTION
**360° MANEUVERABILITY,
ZERO WEIGHT-IN-HAND.**
Guaranteed for life.

DÜSSELDORF | GENEVA | LONDON | NEW YORK

Harrods
www.harrods.com
Knightsbridge | London SW1X 0LZ, United Kingdom

SWISS ARMY KNIVES CUTLERY TIMEPIECES TRAVEL GEAR FASHION FRAGRANCES | WWW.VICTORINOX.COM

Mark Chandler

www.art-dept.com

Art Department



VICTORINOX

MOBILIZER NXT® 5.0 COLLECTION
ENGINEERED FOR PERFORMANCE.
And backed by a lifetime guarantee that even covers common carrier damage.

DUSSELDORF | GENEVA | LONDON | NEW YORK

The Planet Traveller | www.planettraveller.com
04-15 Paragon | 04-19 Ion Orchard | 03-113 Marina Square

SWISS ARMY KNIVES | CUTLERY | TIMEPIECES | TRAVEL GEAR | FASHION | FRAGRANCES | WWW.VICTORINOX.COM

Mark Chandler

www.art-dept.com

Art Department

A man with curly hair, wearing a tan jacket, dark jeans, and brown shoes, stands on a metal bridge railing. He is holding a black Victorinox rolling suitcase with his right hand and has a black Victorinox backpack on his back. The background shows a city skyline across a body of water under a clear sky. The Victorinox logo and brand name are in the top right corner. Text at the bottom left describes the product line and slogan. Text at the bottom right lists retail partners. A red banner at the very bottom contains a list of product categories and the company website.


VICTORINOX

CH-97™ 2.0 COLLECTION
FOR THE ADVENTURER IN US ALL.
Guaranteed for life.

DÜSSELDORF | GENEVA | LONDON | NEW YORK

The Planet Traveller | www.planettraveller.com
04-15 Paragon | 04-19 Ion Orchard | 03-113 Marina Square

SWISS ARMY KNIVES | CUTLERY | TIMEPIECES | TRAVEL GEAR | FASHION | FRAGRANCES | WWW.VICTORINOX.COM

Mark Chandler

www.art-dept.com

Art Department



Mark Chandler

www.art-dept.com

Art Department



Mark Chandler

www.art-dept.com

Art Department

Eddie Bauer



Mark Chandler

www.art-dept.com

Art Department



Mark Chandler

www.art-dept.com

Art Department



Mark Chandler

www.art-dept.com

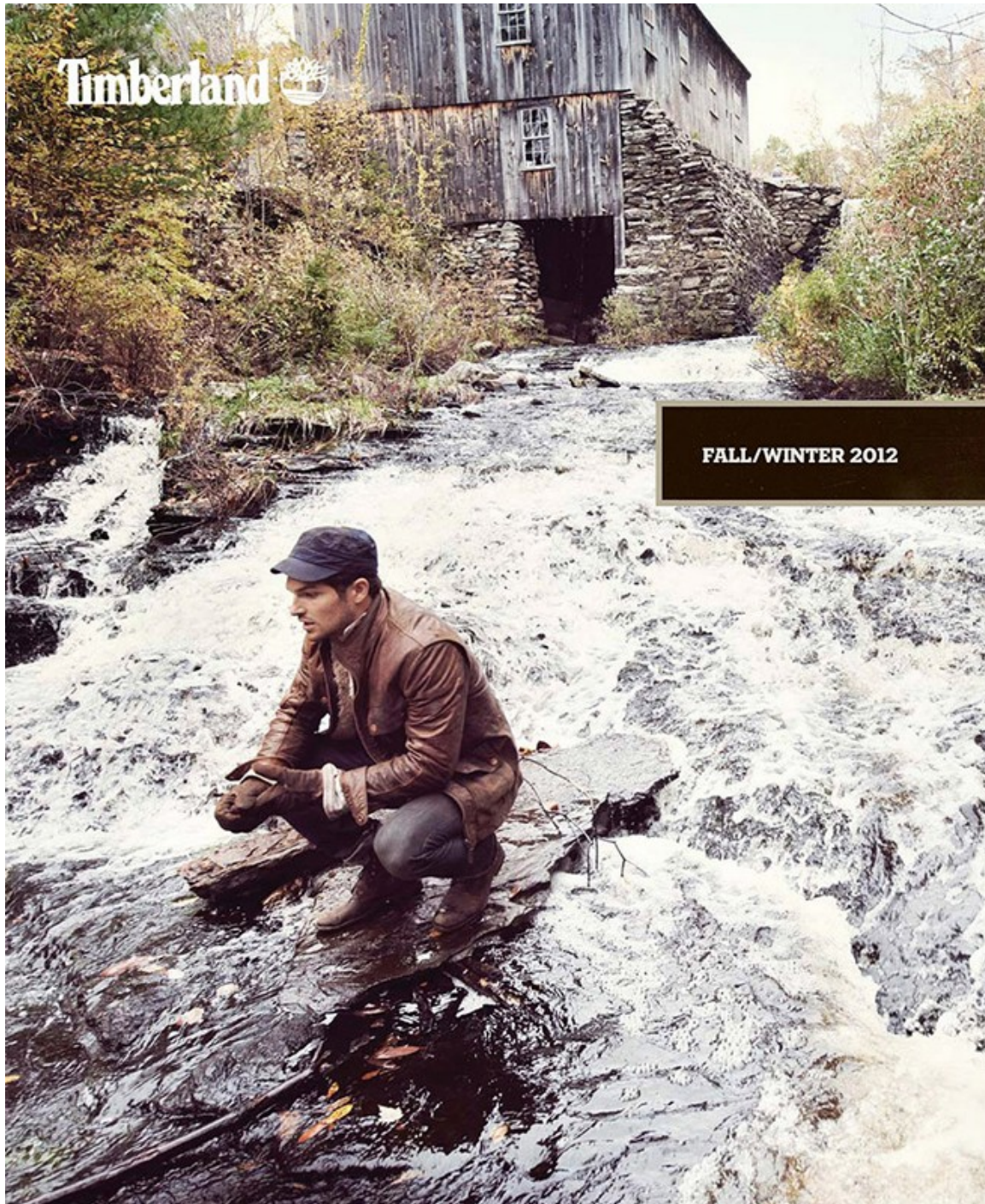
Art Department



Mark Chandler

www.art-dept.com

Art Department



Mark Chandler

www.art-dept.com

Art Department



Mark Chandler

www.art-dept.com

Art Department



Mark Chandler

www.art-dept.com

Art Department



Mark Chandler

www.art-dept.com

Art Department



Mark Chandler

www.art-dept.com

Art Department



Mark Chandler

www.art-dept.com

Art Department



Mark Chandler

www.art-dept.com

Art Department



Mark Chandler

www.art-dept.com

Art Department



Mark Chandler

www.art-dept.com

Art Department



Mark Chandler

www.art-dept.com

Art Department



ECO-CONSCIOUS FLEECE A warm, lightweight
fleece made of at least 30% recycled PET, the stuff plastic bottles are made of.

Mark Chandler

www.art-dept.com

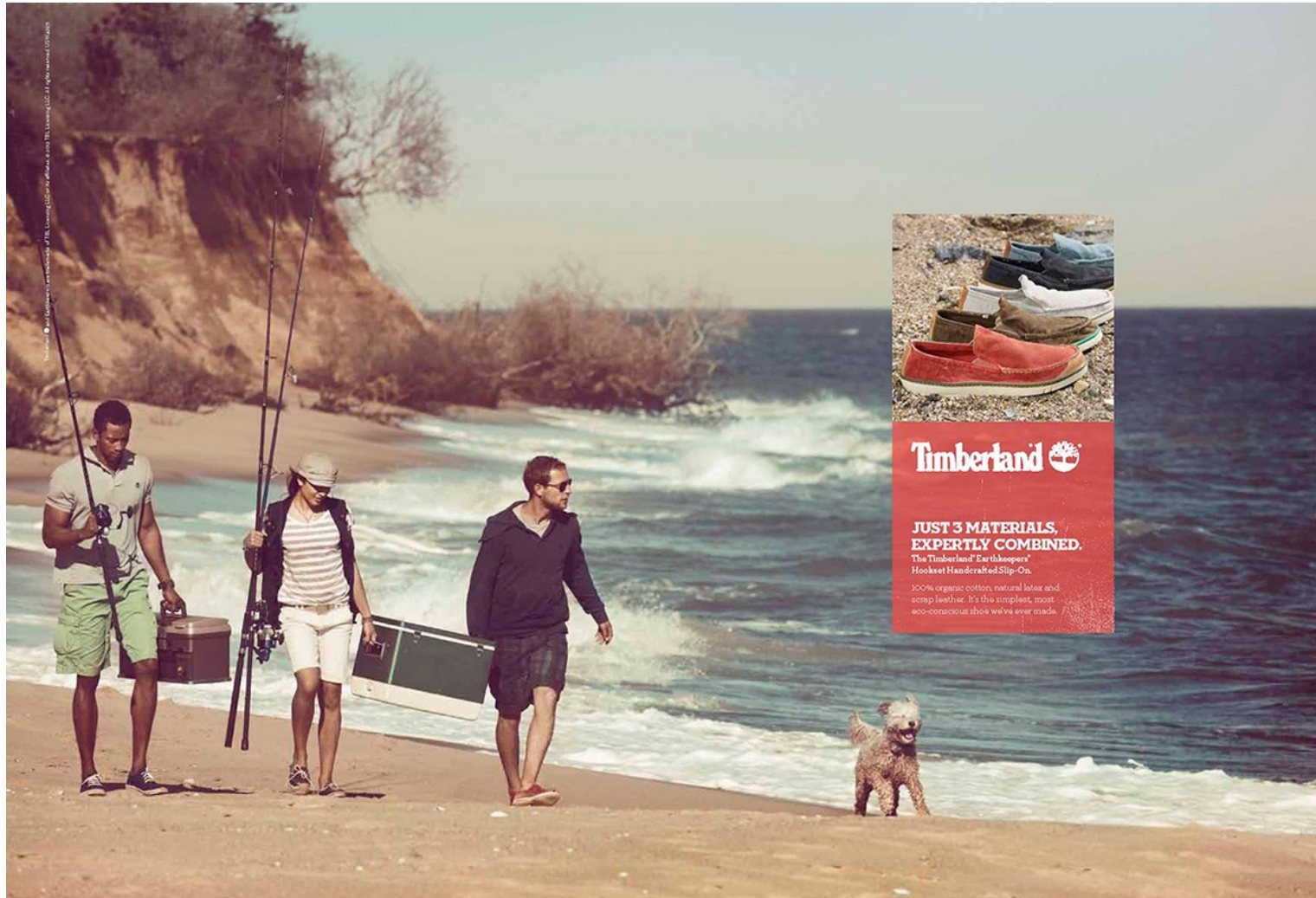
Art Department



Mark Chandler

www.art-dept.com

Art Department



Mark Chandler

www.art-dept.com

Art Department



**WHAT'S
IN YOUR
GEAR?**

Earthkeepers® Heritage Boat Shoe.
Famous grip now with 42% Green Rubber™.
Waterproof Tech Wharf Bomber Jacket.
3 layers of protection. Classic designs that
help you tread lighter and comfortably on
the earth.
timberland.com

Timberland 
NATURE NEEDS HEROES™

Timberland, the tree logo, and the words "NATURE NEEDS HEROES" are trademarks of Timberland Company. © 2013 Timberland Company. All rights reserved.

Mark Chandler

www.art-dept.com

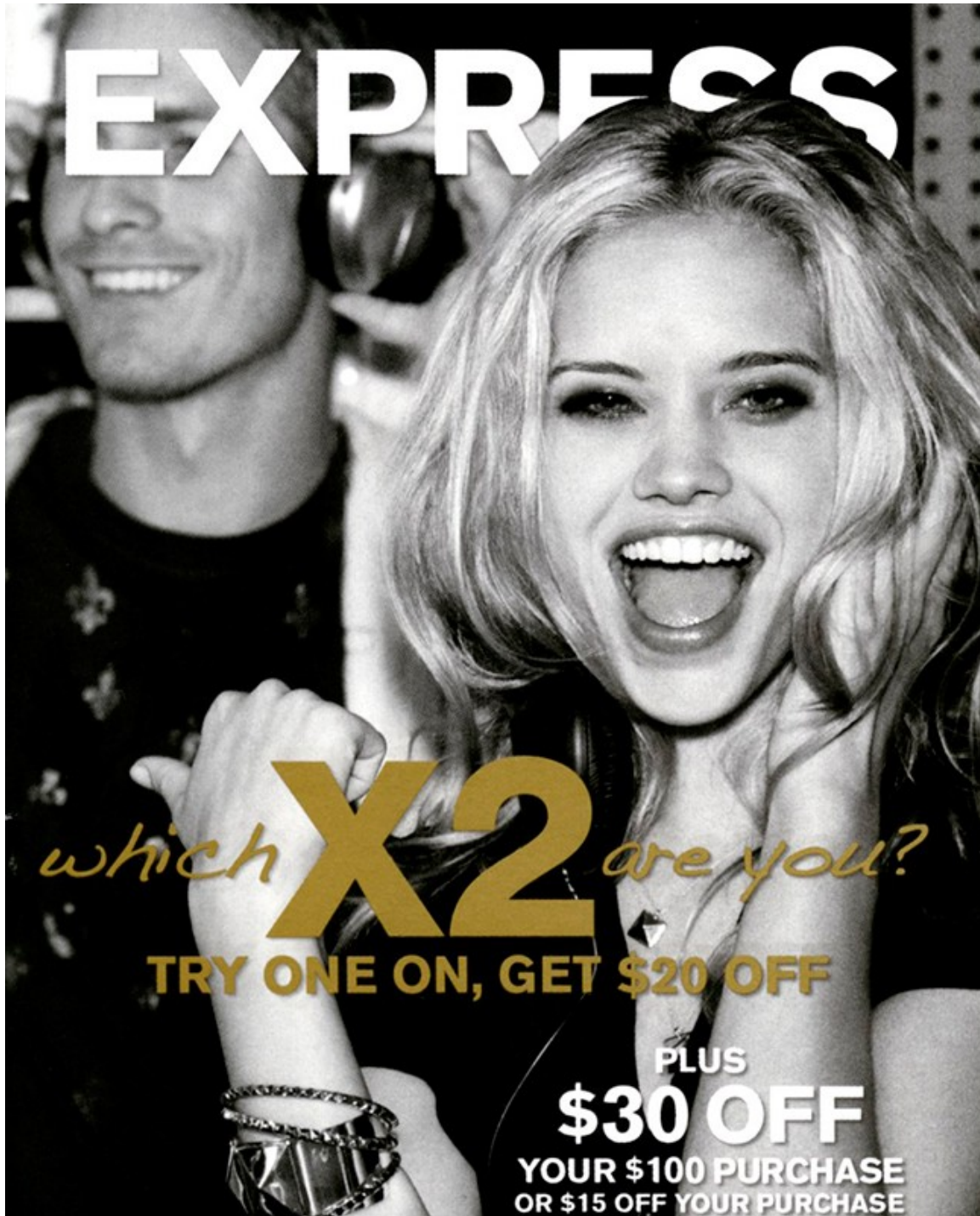
Art Department



Mark Chandler

www.art-dept.com

Art Department



EXPRESS

which **X2** *are you?*

TRY ONE ON, GET \$20 OFF

PLUS
\$30 OFF
YOUR \$100 PURCHASE
OR \$15 OFF YOUR PURCHASE

Mark Chandler

www.art-dept.com

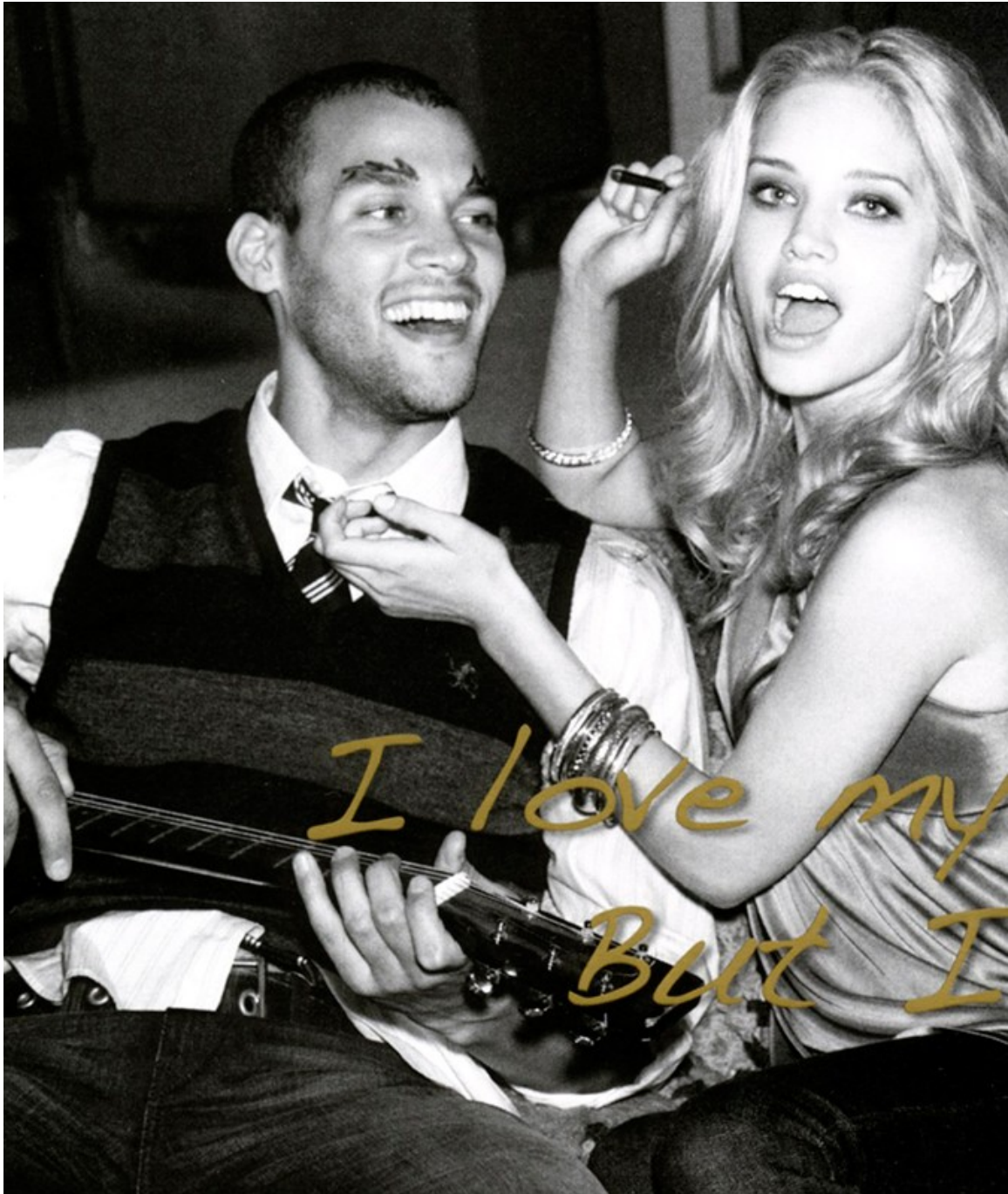
Art Department



Mark Chandler

www.art-dept.com

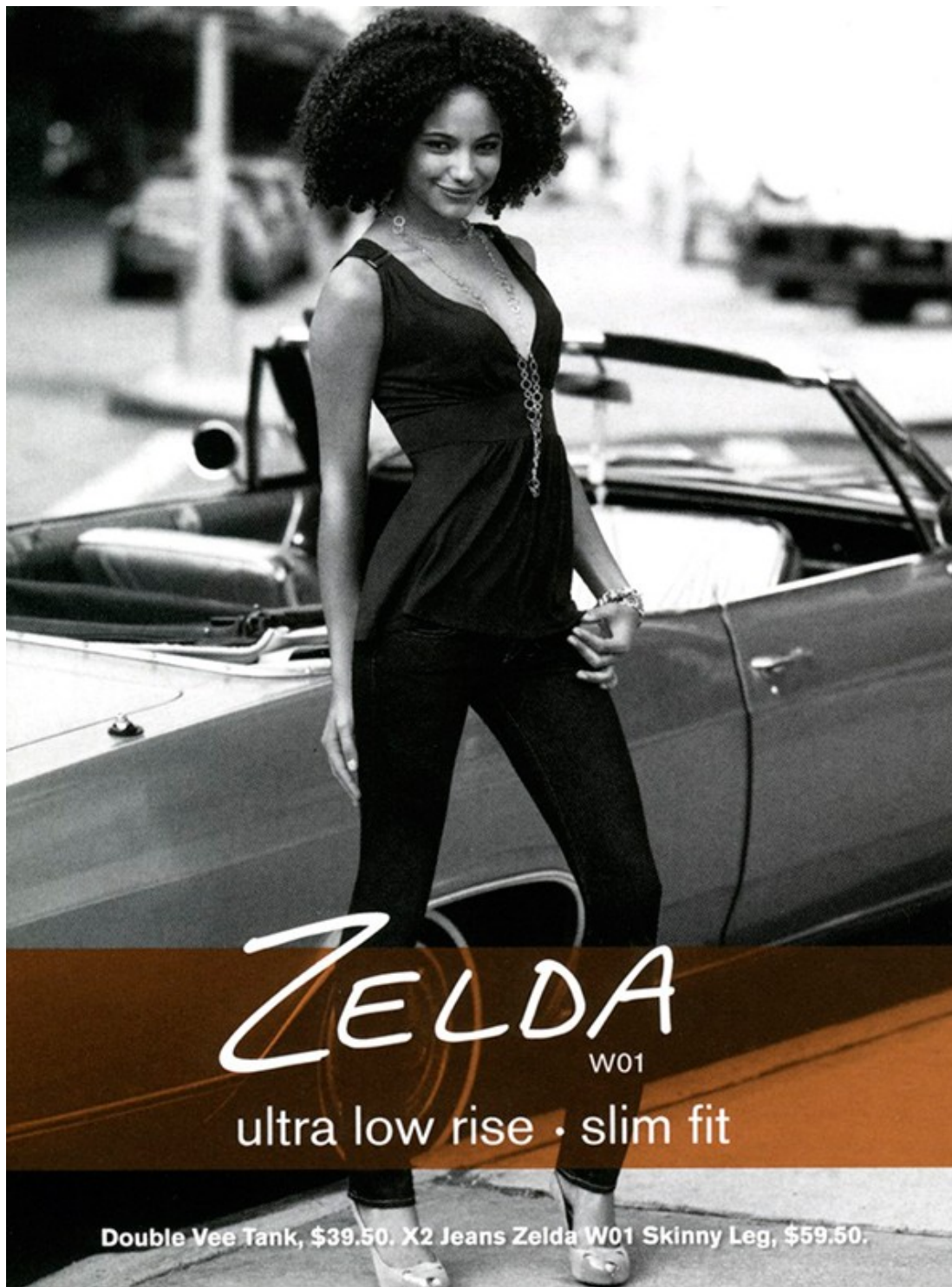
Art Department



Mark Chandler

www.art-dept.com

Art Department



Mark Chandler

www.art-dept.com

Art Department



Mark Chandler

www.art-dept.com

Art Department



Mark Chandler

www.art-dept.com

Art Department



Mark Chandler

www.art-dept.com

Art Department



Mark Chandler

www.art-dept.com

Art Department



Mark Chandler

www.art-dept.com

Art Department



Mark Chandler

www.art-dept.com

Art Department



Mark Chandler

www.art-dept.com

Art Department



Mark Chandler

www.art-dept.com

Art Department

NEW HerbaShine™
COLOR CREME WITH BAMBOO EXTRACT

BRILLIANT COLOR
THAT DEFIES DAMAGE

A BAMBOO BREAKTHROUGH
HerbaShine fortifies hair to fight damage.
Radiant, shiny color. Not a gray in sight.
Lasts through 28 shampoos.

Fortified color. Certified brilliant.

AMMONIA FREE

GARNIER
NEW HerbaShine
COLOR CREME WITH BAMBOO EXTRACT
AMMONIA FREE

only 10 minutes

18 RADIANT SHADES

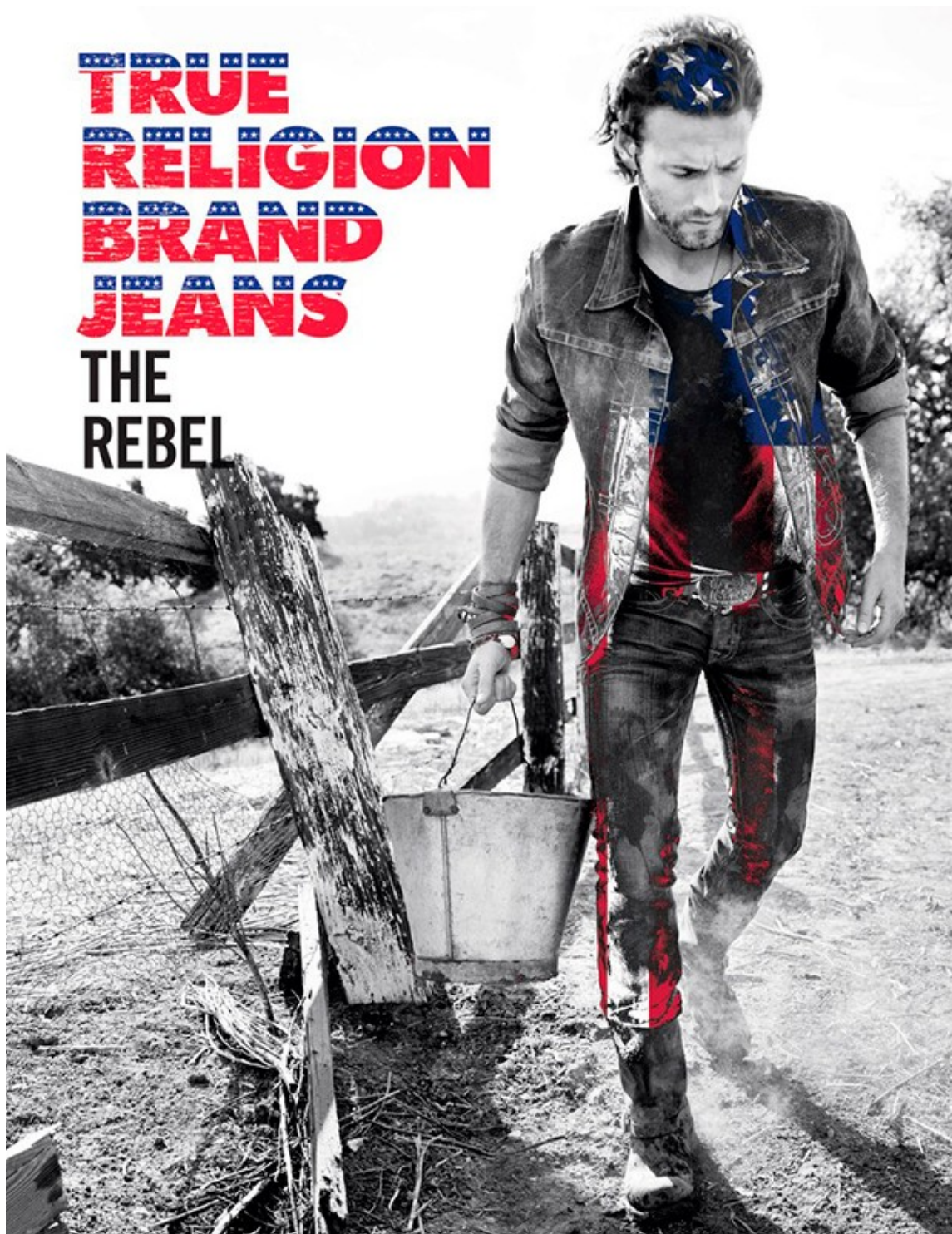
Take care.
GARNIER
Get Fortified Color @ Garnier.com

Silvia shines in shade 645 • Copper Mahogany Brown

Mark Chandler

www.art-dept.com

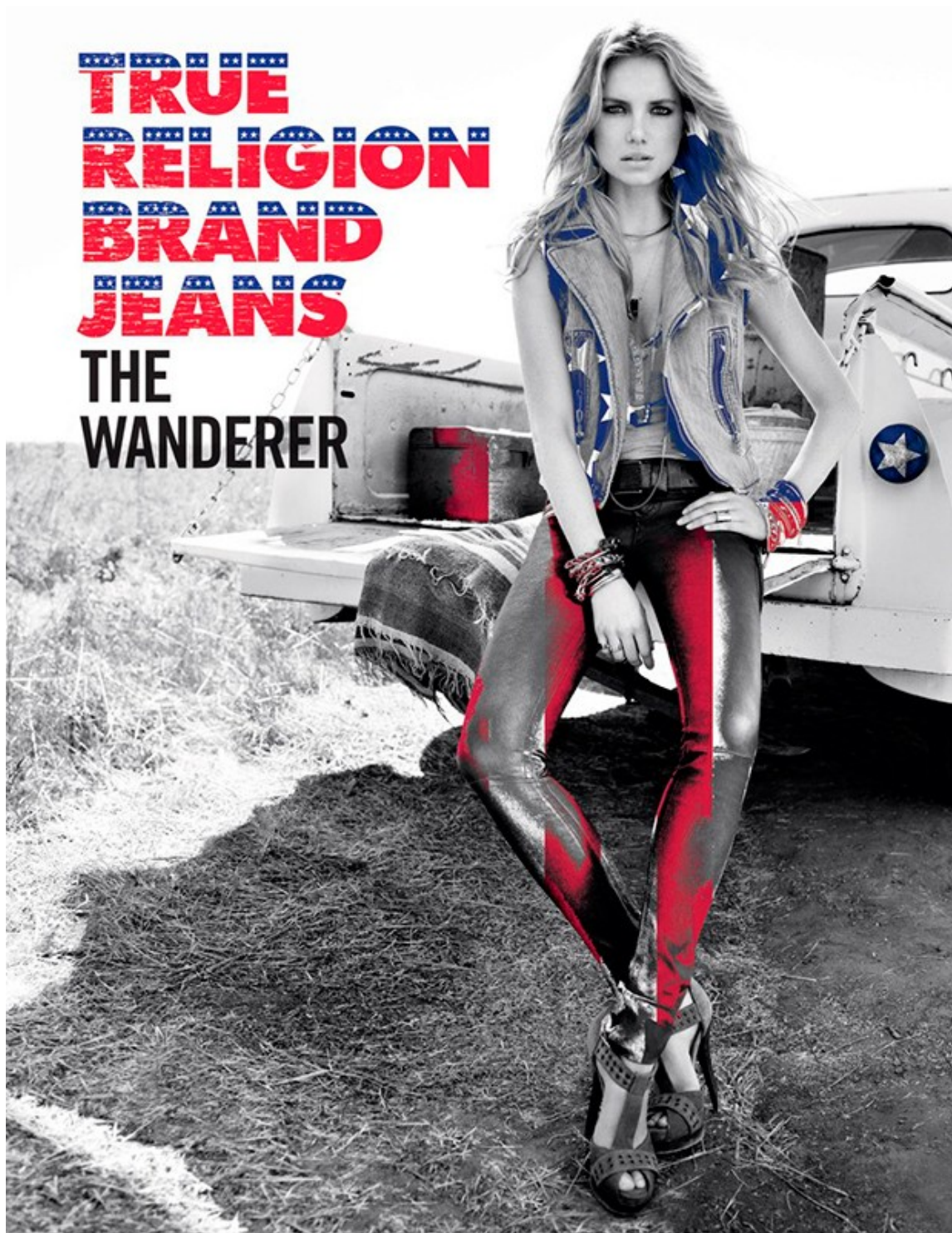
Art Department



Mark Chandler

www.art-dept.com

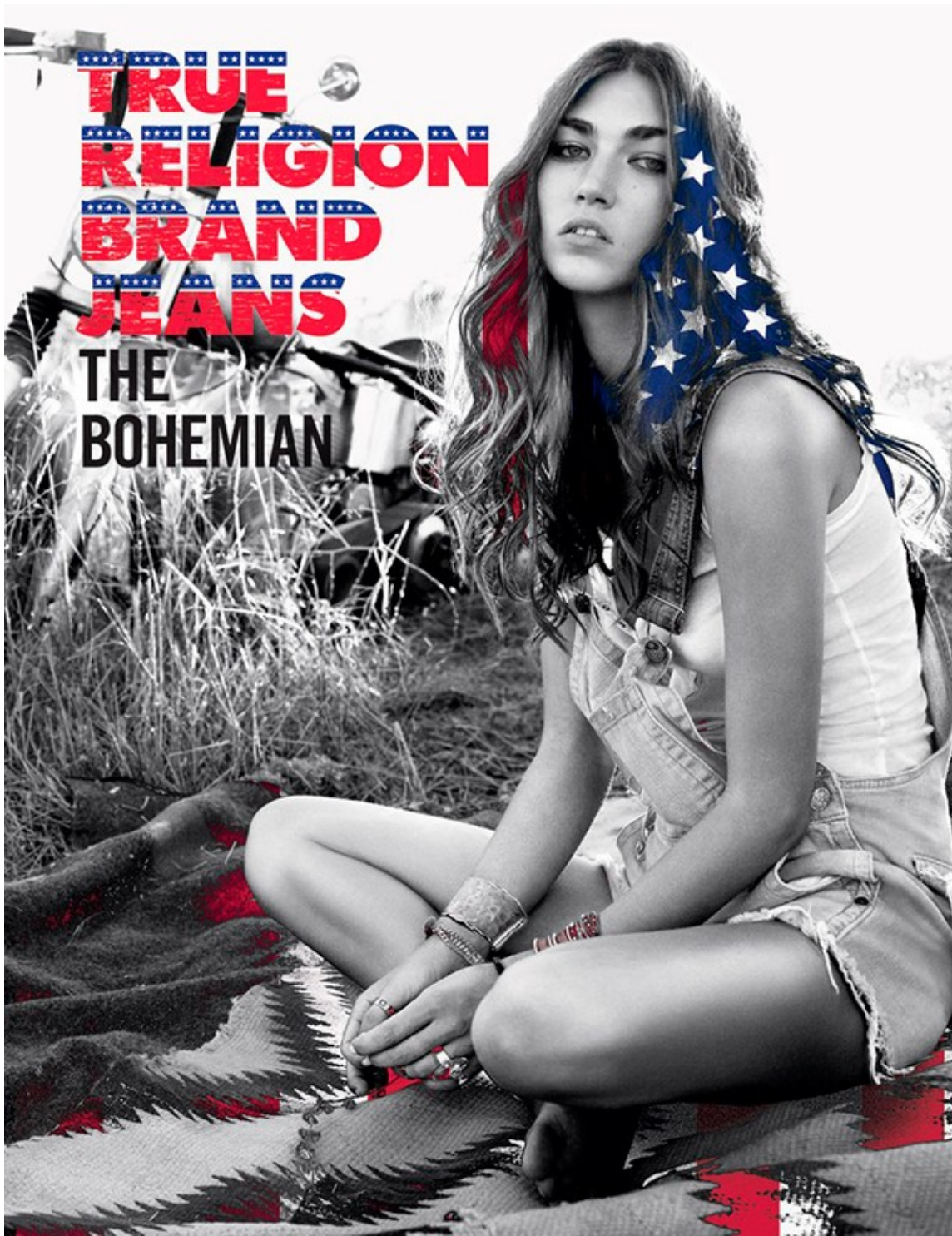
Art Department



Mark Chandler

www.art-dept.com

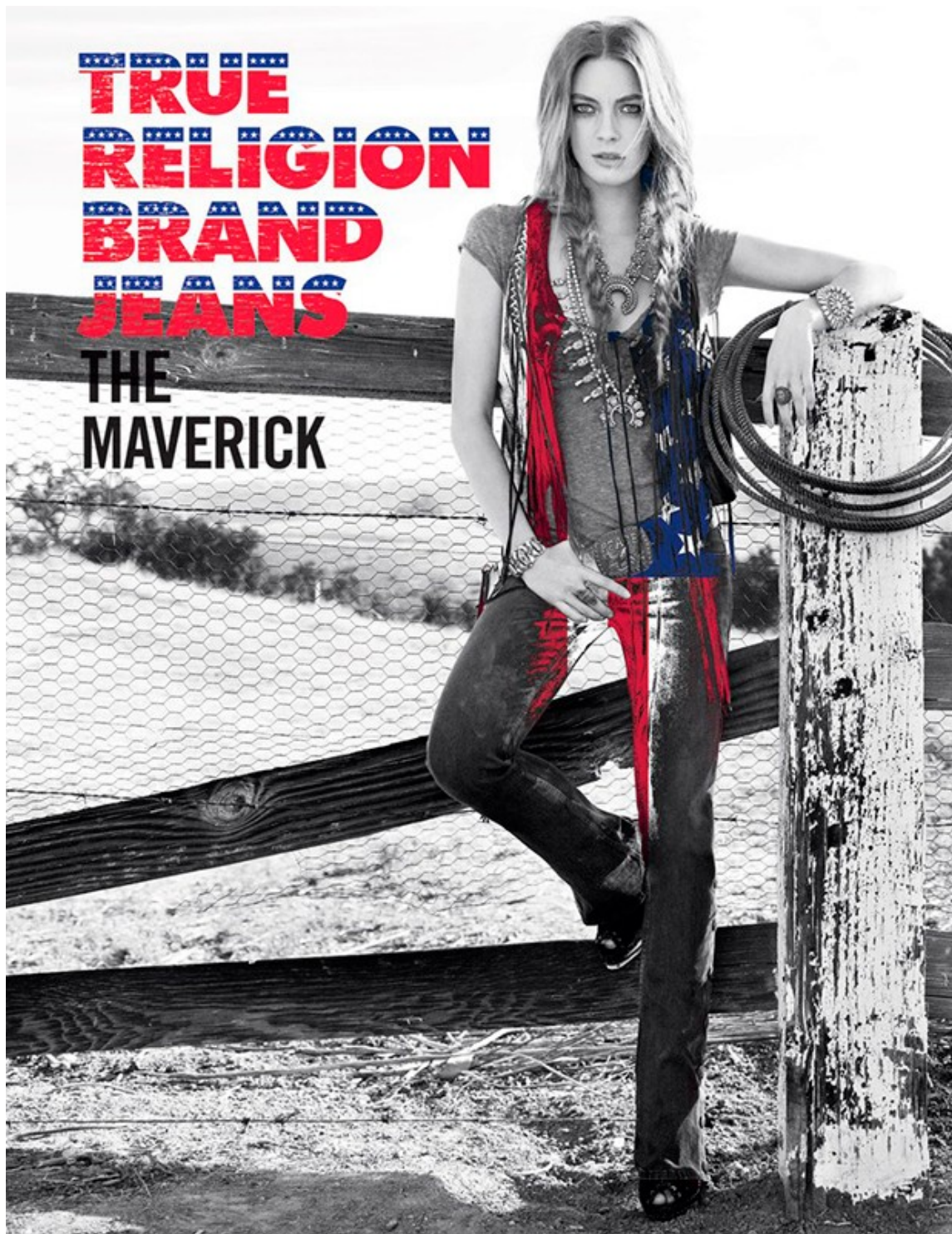
Art Department



Mark Chandler

www.art-dept.com

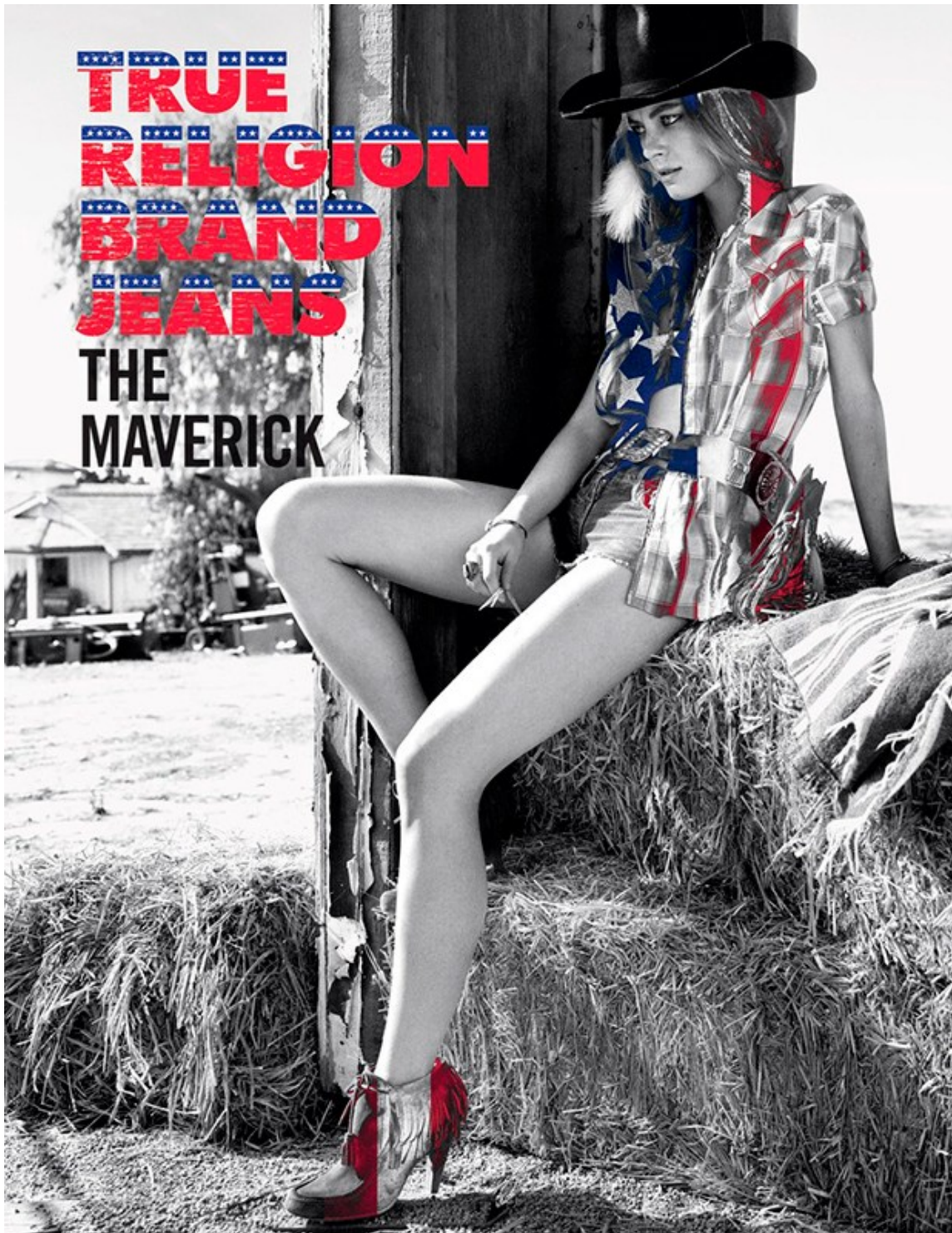
Art Department



Mark Chandler

www.art-dept.com

Art Department



Mark Chandler

www.art-dept.com

Art Department




Mark Chandler

www.art-dept.com

Art Department

Special Advertising Section



ON THE HOUSE

BOTTLE SERVICE COMES HOME

JOIN ACTOR GAELE GARCÍA BERNAL AND FRIENDS AS THEY GATHER ON A PICTURESQUE WEST VILLAGE TERRACE FOR AN EVENING OF SUMMER COCKTAILS

Mark Chandler

www.art-dept.com

Art Department



Mark Chandler

www.art-dept.com

Art Department

Special Advertising Section

ON THE TERRACE WITH EDWARD BURNS

FILMMAKER AND ACTOR EDWARD BURNS ENJOYS GETTING TOGETHER WITH FRIENDS, OLD AND NEW IN NEW YORK'S SOUTHAMPTON. HERE HE SHARES A FEW OF HIS ENTERTAINING PRINCIPLES THAT MAKE EVERYDAY OCCASIONS EXTRA-SPECIAL.

THE GUEST LIST

The secret to a great soirée lies in the guest list. "I hang out with so many different groups of people," Edward says. "It's great when these worlds mingle and my friends become friends."

THE MUSIC

Play to your guests, and let the party unfold naturally. "When I have friends over who have families, I'll play a more chilled out singer-songwriter mix. But when the last of my single friends arrive, the alternative and classic rock go on."

THE FOOD

Keep things simple so you're able to enjoy your own party. Paying attention to location comes into play, too. "If I'm entertaining at the beach, my specialty is Long Island fluke, caught right out of the water," Edward says.

THE POUR

Simple cocktails are an easy way for a host to make a great impression. Edward serves GREY GOOSE Le Citron flavored vodka over ice, with a splash of soda and a squeeze of lime. "There is a confidence in simplicity," Edward says, "which is something I find very refreshing."

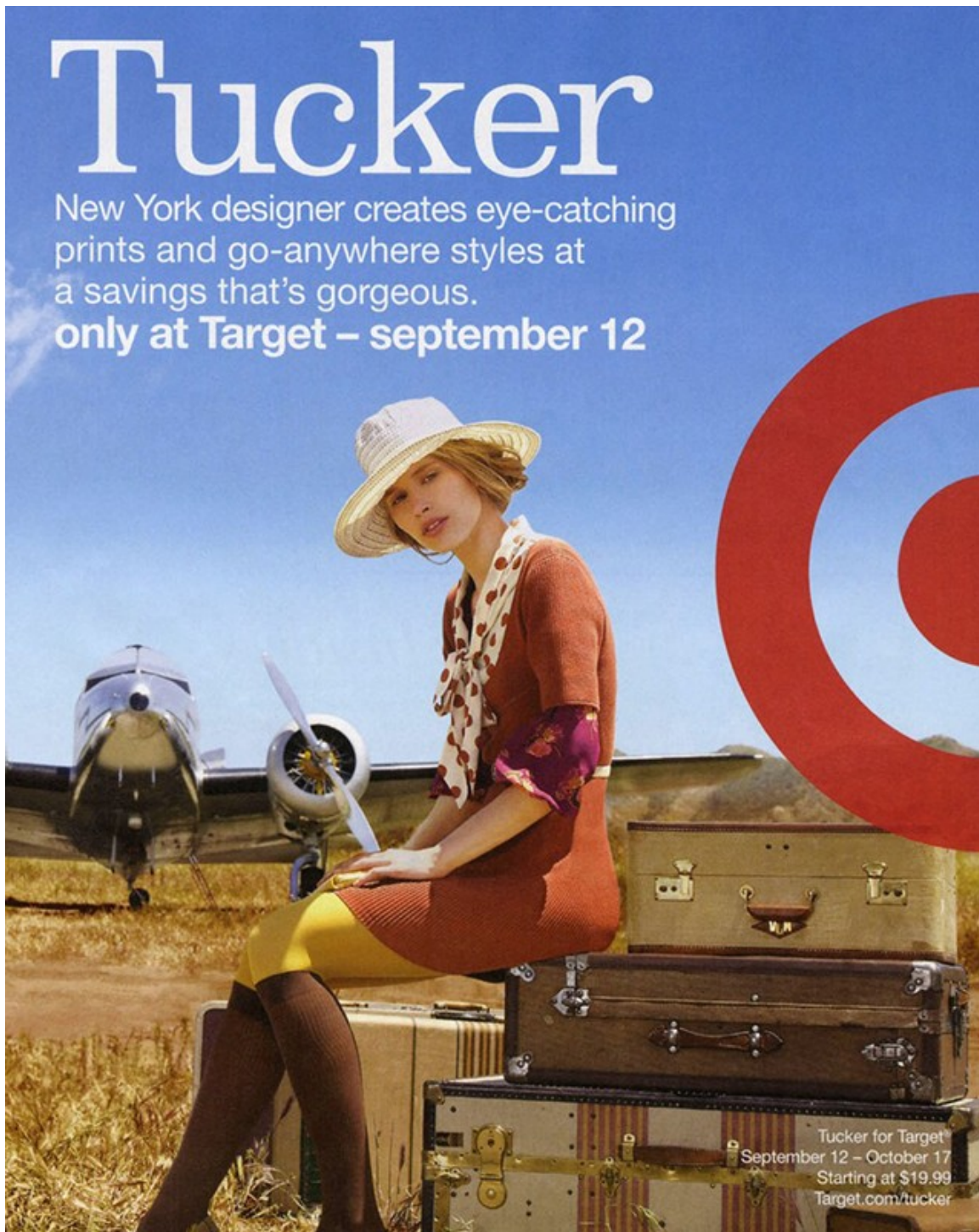
VISIT GREYGOOSE.COM TO LEARN HOW TO MAKE MORE SIMPLE COCKTAILS.



Mark Chandler

www.art-dept.com

Art Department



Tucker

New York designer creates eye-catching prints and go-anywhere styles at a savings that's gorgeous.
only at Target – september 12

Tucker for Target
September 12 – October 17
Starting at \$19.99
Target.com/tucker

Mark Chandler

www.art-dept.com

Art Department



Tucker for Target®
September 12 – October 17
Starting at \$19.99
Target.com/tucker

Mark Chandler

www.art-dept.com

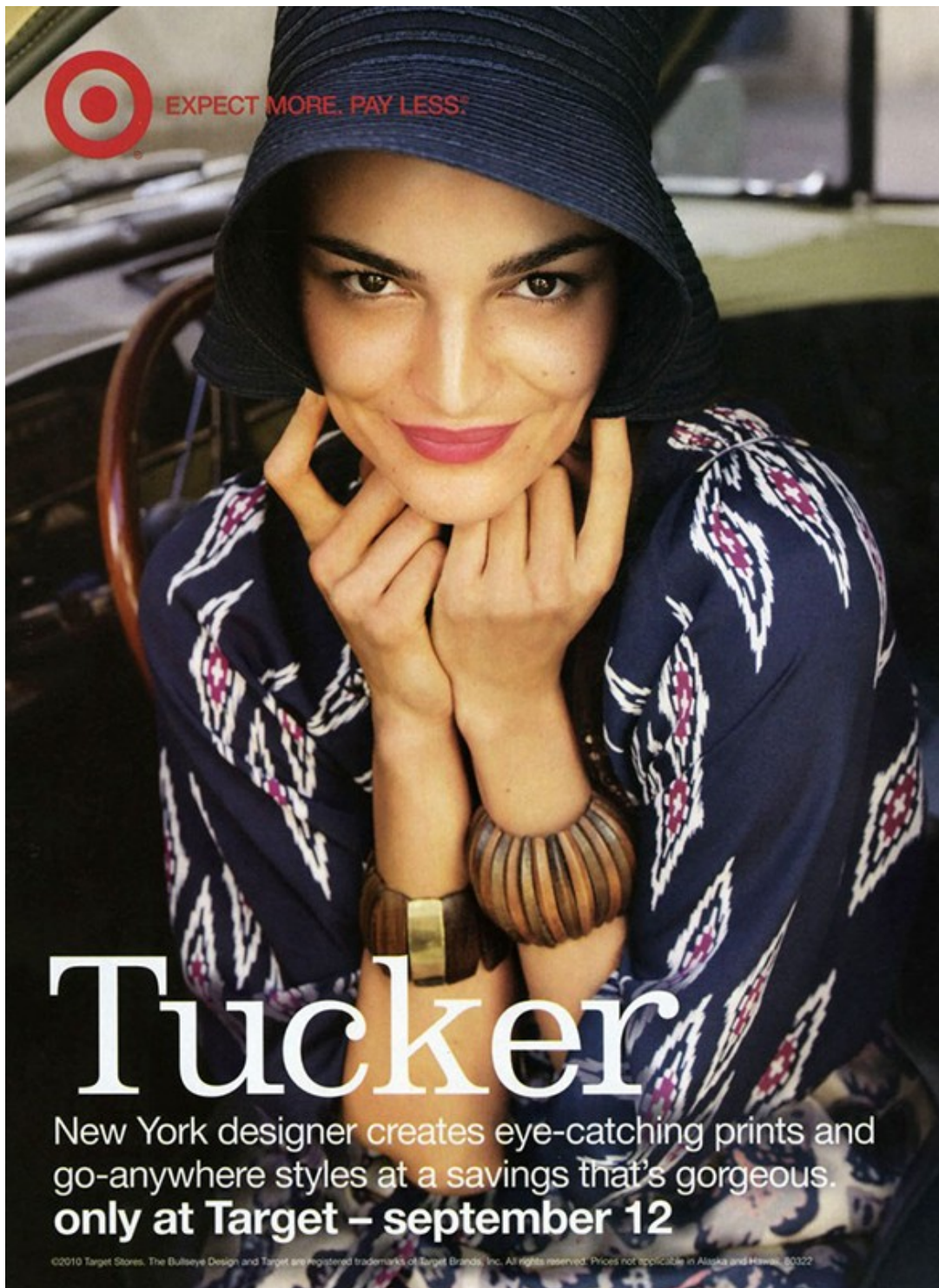
Art Department




Mark Chandler

www.art-dept.com

Art Department



 EXPECT MORE. PAY LESS.®

Tucker

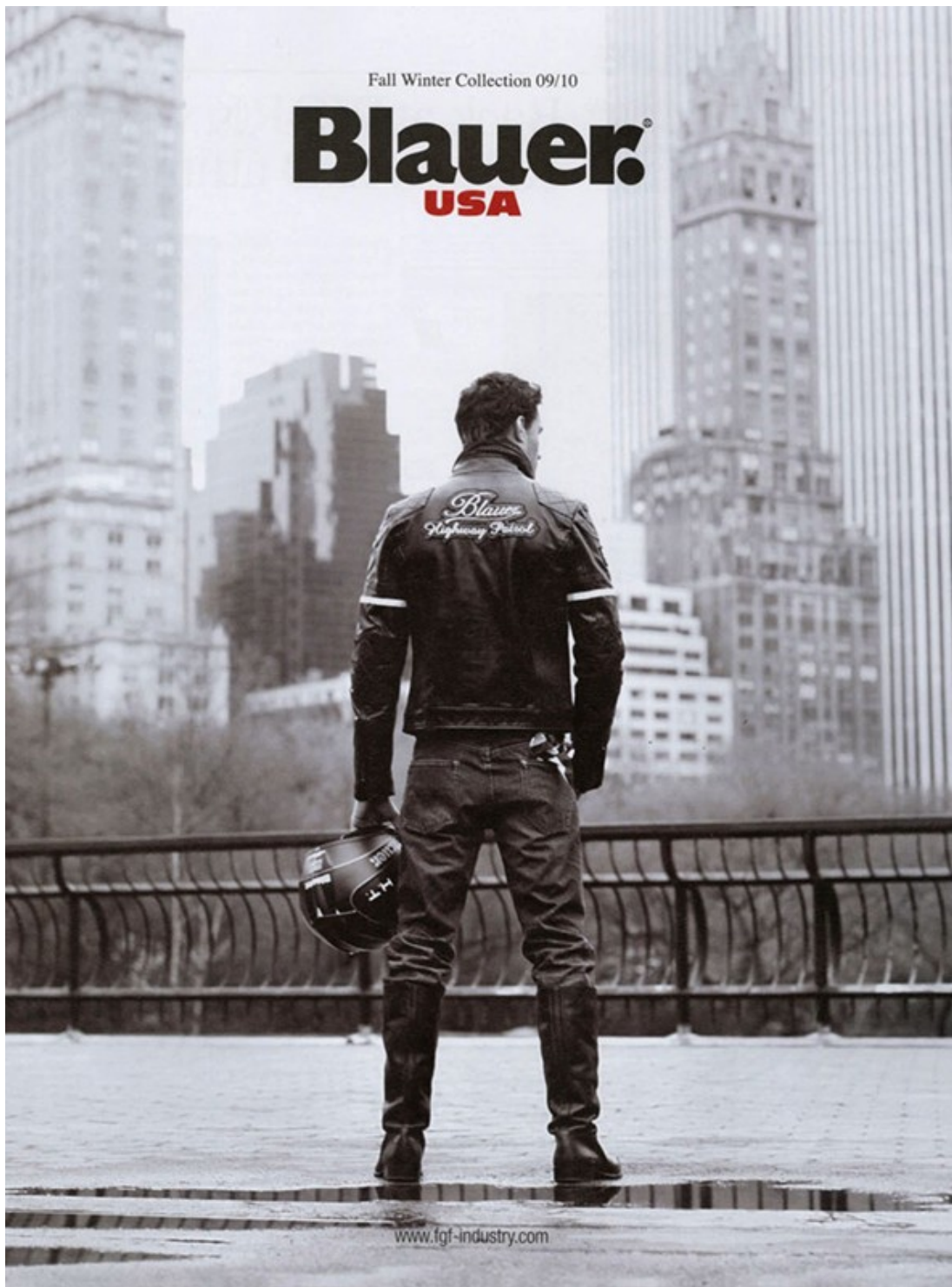
New York designer creates eye-catching prints and go-anywhere styles at a savings that's gorgeous.
only at Target – september 12

©2010 Target Stores. The Bullseye Design and Target are registered trademarks of Target Brands, Inc. All rights reserved. Prices not applicable in Alaska and Hawaii. 00322

Mark Chandler

www.art-dept.com

Art Department



Mark Chandler

www.art-dept.com

Art Department



Mark Chandler

www.art-dept.com

Art Department



Mark Chandler

www.art-dept.com

Art Department



Mark Chandler

www.art-dept.com

Art Department



Mark Chandler

www.art-dept.com

Art Department



Mark Chandler

www.art-dept.com

Art Department



Mark Chandler

www.art-dept.com

Art Department



Mark Chandler

www.art-dept.com

Art Department



Mark Chandler

www.art-dept.com

Art Department



Mark Chandler

www.art-dept.com

Art Department



Mark Chandler

www.art-dept.com

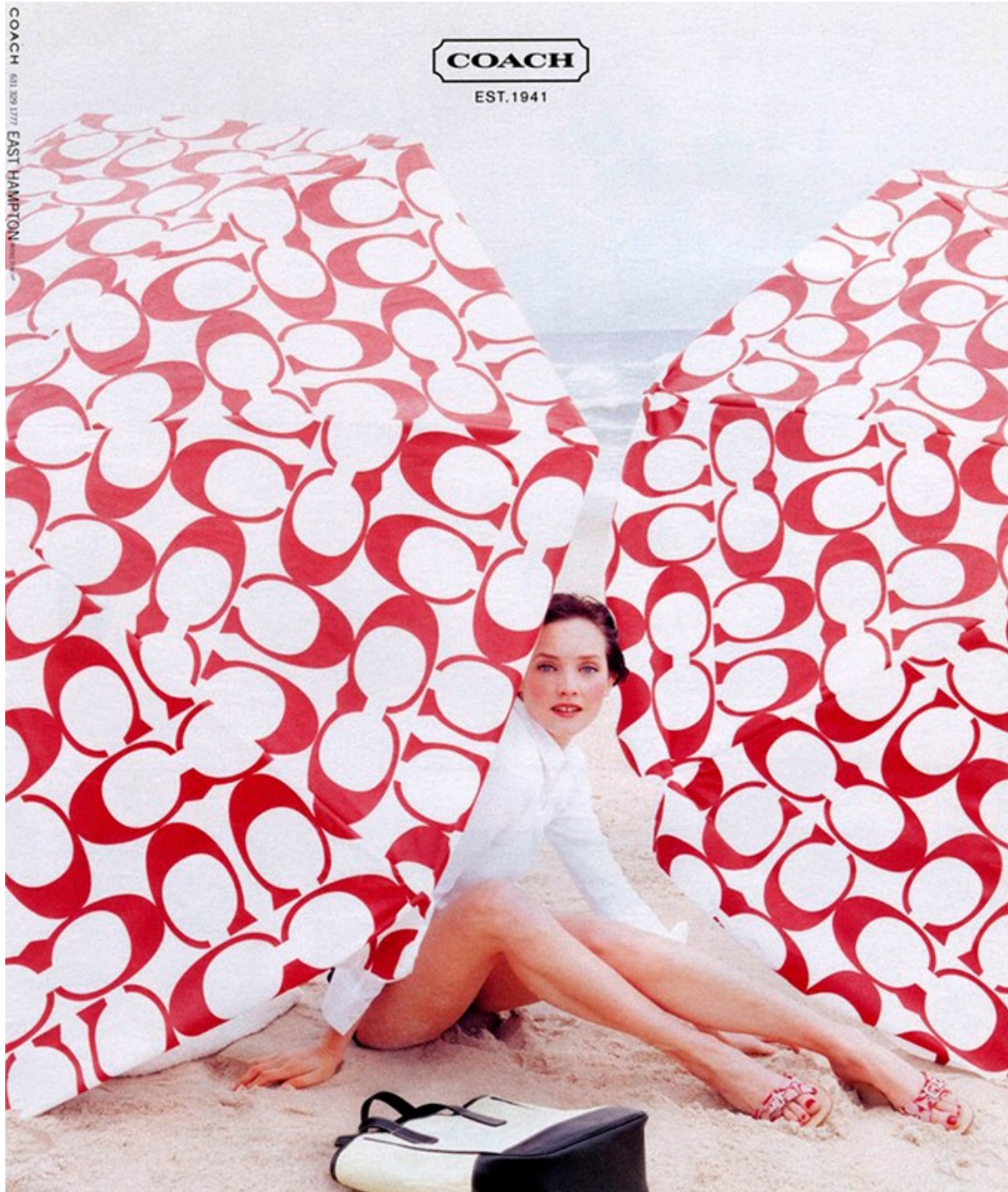
Art Department



Mark Chandler

www.art-dept.com

Art Department



Mark Chandler

www.art-dept.com

Art Department



Mark Chandler

www.art-dept.com