

# Art Department



Mark Chandler

[www.art-dept.com](http://www.art-dept.com)

# Art Department



Mark Chandler

[www.art-dept.com](http://www.art-dept.com)



# Art Department



Mark Chandler

[www.art-dept.com](http://www.art-dept.com)

# Art Department



Mark Chandler

[www.art-dept.com](http://www.art-dept.com)



# Art Department



Mark Chandler

[www.art-dept.com](http://www.art-dept.com)

# Art Department



Mark Chandler

[www.art-dept.com](http://www.art-dept.com)



# Art Department



Mark Chandler

[www.art-dept.com](http://www.art-dept.com)

# Art Department



Mark Chandler

[www.art-dept.com](http://www.art-dept.com)



# Art Department



Mark Chandler

[www.art-dept.com](http://www.art-dept.com)

# Art Department



Mark Chandler

[www.art-dept.com](http://www.art-dept.com)



# Art Department



Mark Chandler

[www.art-dept.com](http://www.art-dept.com)

# Art Department



Mark Chandler

[www.art-dept.com](http://www.art-dept.com)



# Art Department



Mark Chandler

[www.art-dept.com](http://www.art-dept.com)

# Art Department

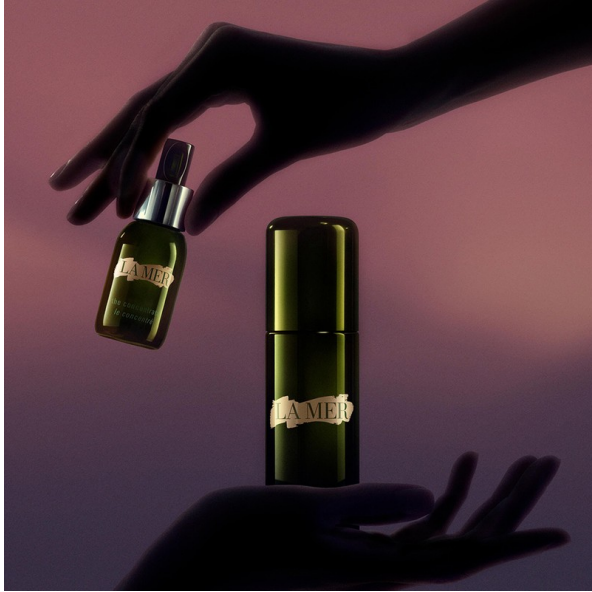


Mark Chandler

[www.art-dept.com](http://www.art-dept.com)



# Art Department



Mark Chandler

[www.art-dept.com](http://www.art-dept.com)

# Art Department



Mark Chandler

[www.art-dept.com](http://www.art-dept.com)



# Art Department



AD-SINGLE PAGE  
TREATMENT LOTION FY18 LM AD - SINGLE PAGE



## Mark Chandler

[www.art-dept.com](http://www.art-dept.com)

# Art Department



**PLUG AND PLAY - TREATMENT LOTION**  
TREATMENT LOTION SIDE BLOCK FY18 LM  
SIZE: 123MM W x 275MM H  
PRINTS: 4/C QTY: 2

**SUPERCARGE  
YOUR REGIMEN**

Boost this mask's  
serum-strength  
lifting power  
*THE LIFTING AND  
FIRMING MASK*

Unleash  
a wave of  
nourishing  
activity  
*THE RENEWAL OIL*

Heighten  
hydration  
*CRÈME DE LA MER*

Mark Chandler

[www.art-dept.com](http://www.art-dept.com)



# Art Department



Mark Chandler

[www.art-dept.com](http://www.art-dept.com)

# Art Department

LA MER



*DAD'S DAILY TRIM*

Mark Chandler

[www.art-dept.com](http://www.art-dept.com)



# Art Department



Mark Chandler

[www.art-dept.com](http://www.art-dept.com)

# Art Department



Mark Chandler

[www.art-dept.com](http://www.art-dept.com)



# Art Department



Mark Chandler

[www.art-dept.com](http://www.art-dept.com)

# Art Department

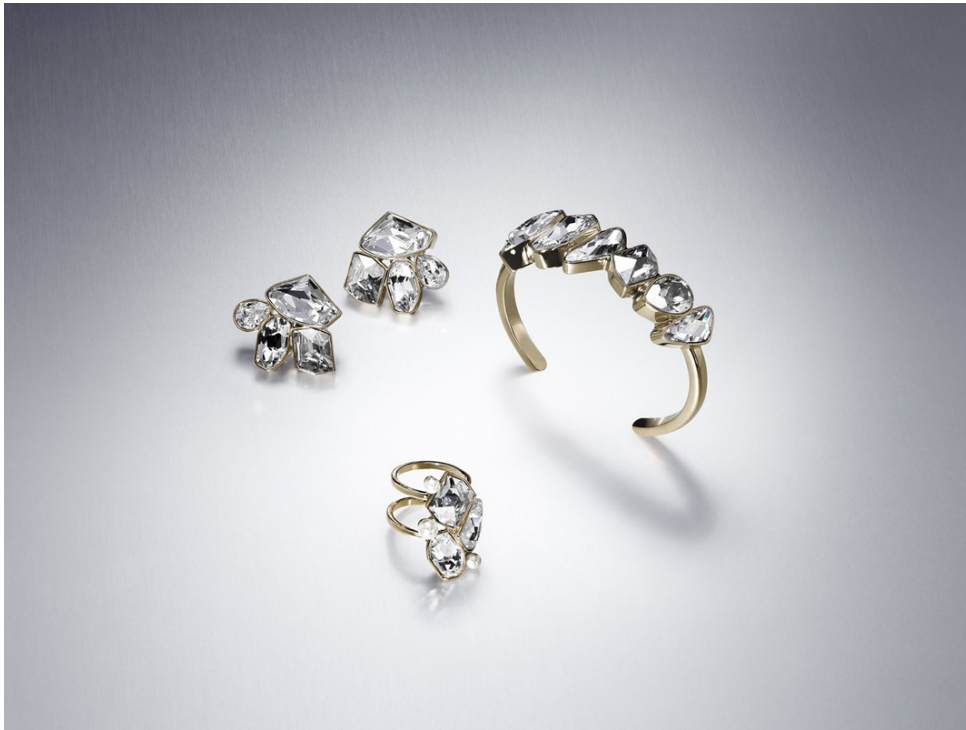


Mark Chandler

[www.art-dept.com](http://www.art-dept.com)



# Art Department



Mark Chandler

[www.art-dept.com](http://www.art-dept.com)

# Art Department



Mark Chandler

[www.art-dept.com](http://www.art-dept.com)



# Art Department



Mark Chandler

[www.art-dept.com](http://www.art-dept.com)

# Art Department



Mark Chandler

[www.art-dept.com](http://www.art-dept.com)



# Art Department



Mark Chandler

[www.art-dept.com](http://www.art-dept.com)



# Art Department



Mark Chandler

[www.art-dept.com](http://www.art-dept.com)

# Art Department



Mark Chandler

[www.art-dept.com](http://www.art-dept.com)

# Art Department



Mark Chandler

[www.art-dept.com](http://www.art-dept.com)



# Art Department



Mark Chandler

[www.art-dept.com](http://www.art-dept.com)

# Art Department



Mark Chandler

[www.art-dept.com](http://www.art-dept.com)

# Art Department



Mark Chandler

[www.art-dept.com](http://www.art-dept.com)



# Art Department



Mark Chandler

[www.art-dept.com](http://www.art-dept.com)

# Art Department

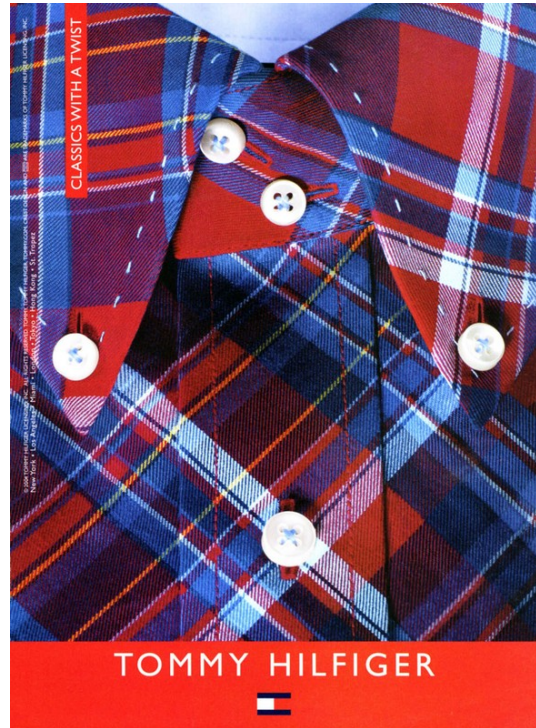


Mark Chandler

[www.art-dept.com](http://www.art-dept.com)



# Art Department



Mark Chandler

[www.art-dept.com](http://www.art-dept.com)



# Art Department



Mark Chandler

[www.art-dept.com](http://www.art-dept.com)



# Art Department

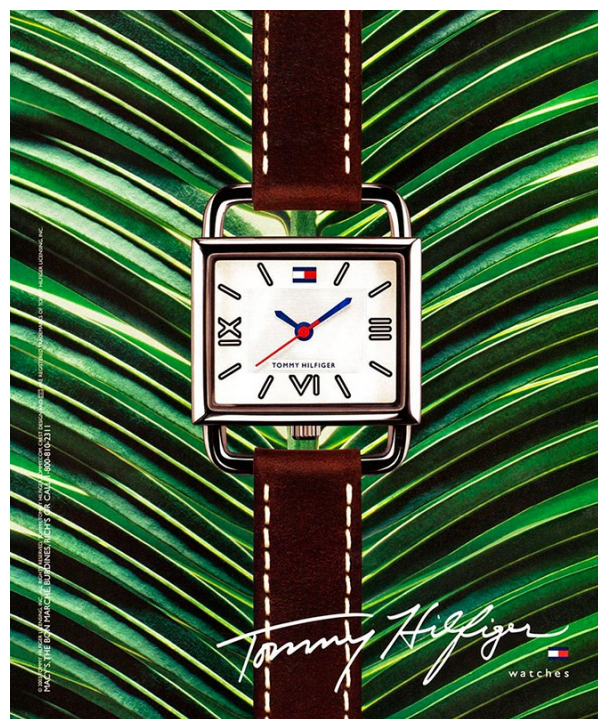


Mark Chandler

[www.art-dept.com](http://www.art-dept.com)



# Art Department

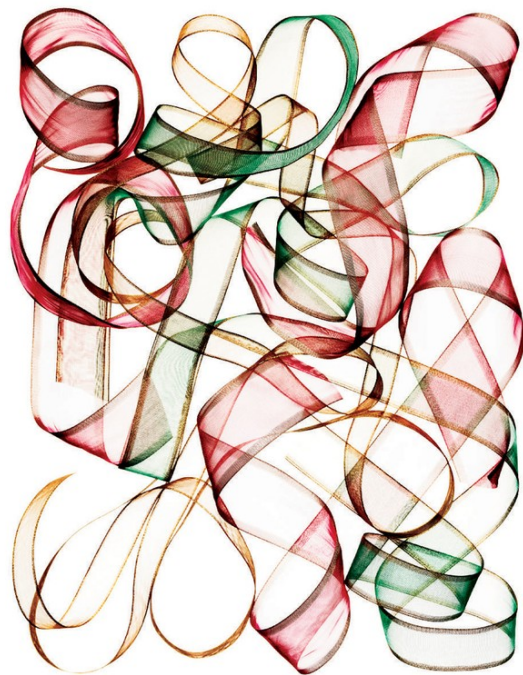


Mark Chandler

[www.art-dept.com](http://www.art-dept.com)



# Art Department



Mark Chandler



# Art Department



Harper's  
**BAZAAR**

The Best  
Accessories:  
Grommets

Fall's hottest extras are intricately studded, sumptuously textured and fashionably mod

Clockwise from top: Bracelet, \$645; Top, Ring, \$2000; Budget, Bracelet, R.J. Graziano, Cuff, \$11,000; Faraone Mennella, Bag, \$2450; Yves Saint Laurent, Watch, \$1000; and bag, \$1570; Prada, Bag, \$1800; Tiffany & Co., Purse, Venezia, Bracelet, \$6600; and Cuff, \$4950; Vendorala, Ring, Cartier, Pump, \$520; Moschino. See Where to Buy for details.  
Fashion editors: Ana Abdul and Annie Meyers-Sheyer  
Photographs by Toby McFarlan Pond >

THE BAZAAR

The Best  
Accessories:  
Black & White

Opt for pieces teeming with character—from a spectator slingback to a zebra-striped hobo

Clockwise from top: Bracelet, \$100; Kenneth Jay Lane, Ring, \$2000; Pomellato, Bag, \$878; Loewe, Clutch, Proenza Schouler, Bracelet, \$88; Kenneth Jay Lane, Slingback, \$275; Kate Spade, Bracelet, \$70; R.J. Graziano, Ring, \$2715; Pomellato, Ring, \$500; Coach, Necklace (worn as bracelet), \$320; and pump, \$490; Giorgio Armani, Bracelet, \$125; R.J. Graziano, Hat, \$695; Chanel. See Where to Buy for details.  
Manicures: Jin Soon Choi for Jin Soon Natural Hair & Foot Spa; body makeup: Sergio Consacho; prop styling: Mark Chandler

Mark Chandler

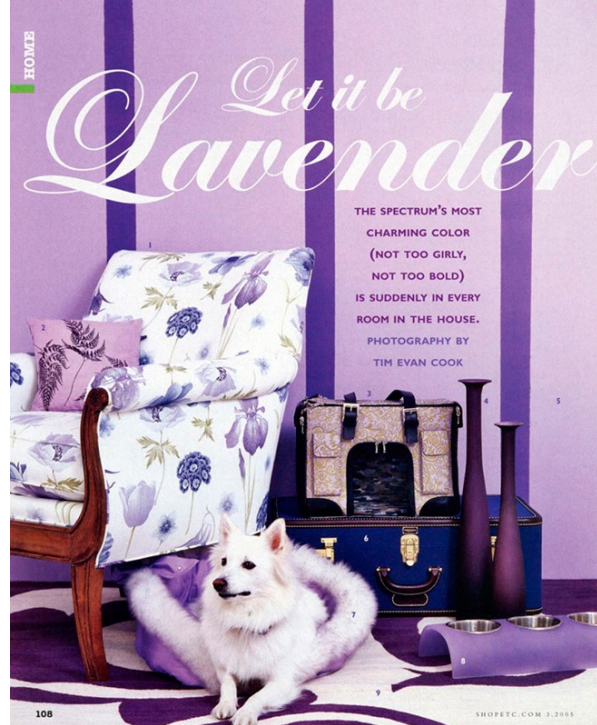
www.art-dept.com



# Art Department



Clochette from top: Pump, \$460; Celine, Braided, \$200; Vera Wang, Belt, \$265; Yves Saint Laurent, Clutch, \$720; Oscar de la Renta, Gloves (throughout), \$100 a pair; LaCrima Gloves, Bangles, Resonance Amulet for Lee Angel, Rings (bottom and center left), \$200-\$600; Vera Wang, Belt, Bag and belt (top left bracelet), Lanvin, Hood, \$615; Sergio Rossi, Rings (top left and center), \$17,000-\$27,000; Harry Winston, Diamond, \$475; Salvatore Ferragamo, Bag, \$1000; Fendi, See-Through to buy for details



106

SHOPETC.COM 3.2005



DECORATE WITH LAVENDER WHEREVER YOU UNWIND. THE COLOR IS SOOTHING AND RELAXING. 10. Habbe Construction "Olive Blossom" Pillow, \$50; Homebow, 877-944-9888, or homebow.com; 11. The Good Home Co. Surface Cleaner, \$12, and Hand Soap, \$10; Rabbit-Dunley, 800-945-9311, or peacefulcompany.com; Method All-Purpose Cleaner in french lavender, \$2.99; methodhome.com; 12. The Land of Nod "Tie A Ribbon" Lamp, \$49; The Land of Nod, 800-933-9904, or landofnod.com; 13. Calvin Klein Home Khaki Collection All-Purpose Goblet, \$12.50; Calvin Klein Home, 800-294-7978 for locations.

14. PBteen "Graind" Cordless Phone, \$99; PBteen, 844-472-4901, or pbteen.com; 15. IKEA "Lack" Wall Shelf, \$12.99 (43"); IKEA, 800-434-4532 for locations, or ikea.com; 16. Philippe Starck for Karrell "La Marie" Chair in violet, \$245; Karrell, 212-964-6845; 17. Breville Muck Litard Mixer in dark blue, \$450; Breville, 800-284-8480 for locations; 18. KitchenAid Artisan Mixer, \$299.99; KitchenAid, 800-422-1230, or surfstable.com.

PROP STYLING BY MARK CHANDLER  
The word lavender comes from the Latin term *lavare*, which means "to wash." In fact, the Romans, who popularized lavender, bathed in it.



TO YOUR ART COLLECTION

## Mark Chandler



# Art Department



Mark Chandler

www.art-dept.com



# Art Department



ANTHONY STERN FOR KELLY HOPPEN Exclusively ours. Round 24-percent lead crystal vases with copper cuff. Available in white or taupe. England, Seventh Floor. Large, 21" high x 8" diameter \$795 Small, 8 1/2" high x 6" diameter \$395 MOO ROO Black-and-white ostrich feather evening bag with bead accents and silk handles. 9" high x 5" wide x 1" deep. USA, Main Floor. \$525

## Mark Chandler

[www.art-dept.com](http://www.art-dept.com)



# Art Department



"IF YOU CAN'T TAKE IT WITH YOU  
DON'T GO."

ILLUSTRATED BY ANTHONY

T. ANTHONY



comfort zone

SOMETHING SOFT and beautiful to rest on is what you need after being relentlessly upright all day. Turn a bed or sofa into an otherworldly place with extravagant catches—just a couple or a whole heap. 1. Lars Bolander embroidered coral motif, \$375. 2. Mark Snider beaded taffeta, \$180. 3. Jennifer Ball-Frangou paisley, \$363. 4. Authier-oppinger embroidered floral, \$98. 5. Alike Carpet & Home multicolor beaded, \$215. 6. Mirren fine wool and silk shawl, \$356. For details see Shop Guide.

To cushion life's blows—pillows burnished with sequins, beads, silver, and gold.



comfort zone

Classic dishes are the main meal. Fancy glassware is like a little dessert for your table.

YOU HAVE PARTY DRESSES, why not party glasses? Tumblers, flutes, goblets—ranging from go-for-baroque to modern with a heart of gold—are ravishing companions for pure white dishes. 1. Nathan & Moretti fluted glass, \$70. 2. Conedrine Marano wineglass, \$60. 3. Lake pewee bottle, \$42. 4. William Youward etched lead crystal and glass goblet, \$174. 5. Kim Soybert crystal-molded flute. Set & necklace & Moretti tumbler, \$65. 7. Me + I quartz necklace, \$600. 8. Takashimura frosted gold sake glass, \$95. 9. Niderviller crystal coupe glass, \$20. 10. Domino cake stand, \$29. 11. Stephen Dweck citrine necklace. >



comfort zone

Spare can be chic, but it's sometimes forbidding. Risk a little glitz—a richly beaded pillow, a fancy vase, or a gold-embroidered throw. **The New Gilded Age**

OBVIAE IS GREAT because it doesn't feel mass produced. Lavish pillows and throws—a fine way to brighten and sweeten a hard-edged modern chair—evade a time when modernism was hand-done and tastes were lush, less severe. 1. Megan Park Chinese hand-embroidered floral pillow, \$195. 2. Pier 1 beaded pillow, \$18. 3. John Robshaw hand-embroidered silk pillow, \$205. 4. Etro silk scarf, \$450. 5. Anichini handwoven silk and wool throw, \$1,250. 6. Zaha Home silk-edged velvet throw, \$275. 7. Dr. Brandt and Ross patchwork brocade throw, \$440. 8. Nanette Textiles embroidered satin mules, \$64. >

Mark Chandler

www.art-dept.com



# Art Department



L'ORANGE

GREY GOOSE  
*L'Orange*



GREY GOOSE  
*Le Cordon*

## Mark Chandler

www.art-dept.com

# Art Department



Mark Chandler

[www.art-dept.com](http://www.art-dept.com)