

# Art Department



Natasha Louise King

[www.art-dept.com](http://www.art-dept.com)

# Art Department



Natasha Louise King

[www.art-dept.com](http://www.art-dept.com)

# Art Department



Natasha Louise King

[www.art-dept.com](http://www.art-dept.com)

# Art Department



Natasha Louise King

[www.art-dept.com](http://www.art-dept.com)

# Art Department



Natasha Louise King

# Art Department



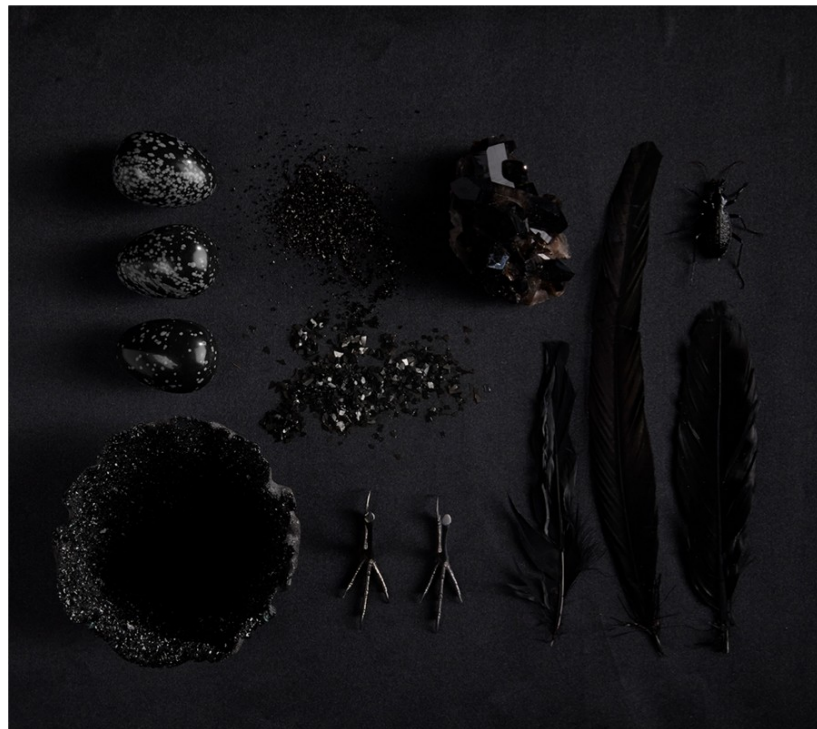
Natasha Louise King

# Art Department



Natasha Louise King

# Art Department

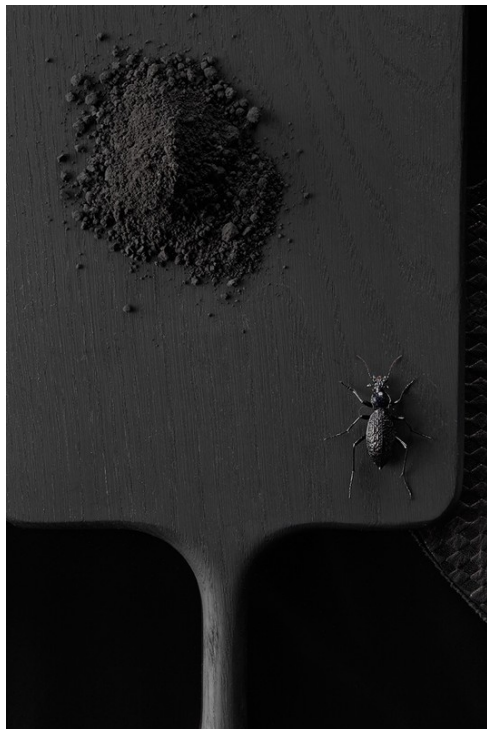


Natasha Louise King

[www.art-dept.com](http://www.art-dept.com)



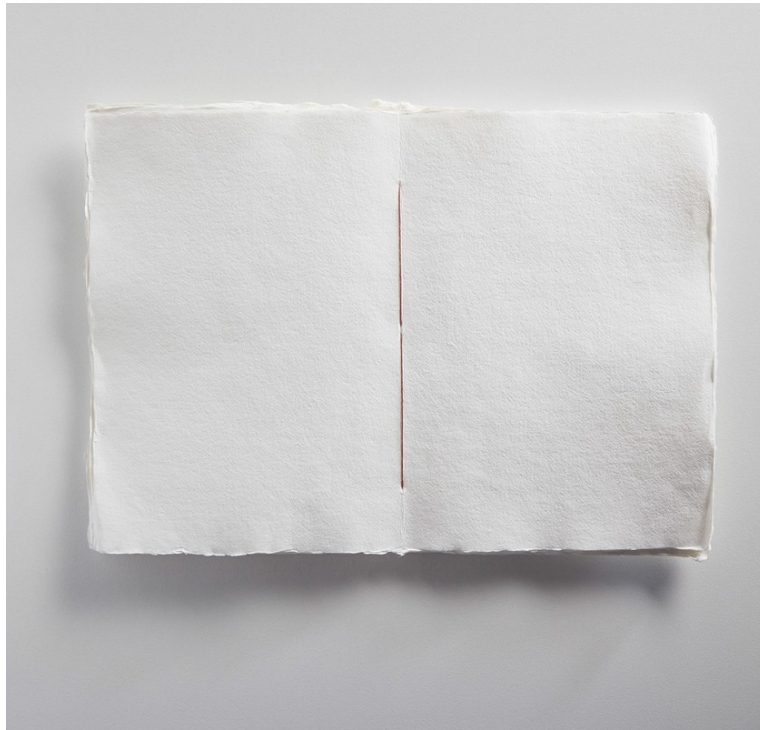
# Art Department



Natasha Louise King

[www.art-dept.com](http://www.art-dept.com)

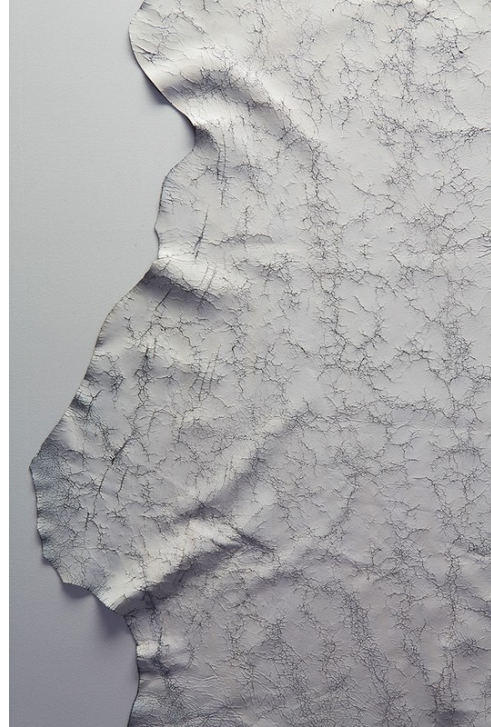
# Art Department



Natasha Louise King

[www.art-dept.com](http://www.art-dept.com)

# Art Department

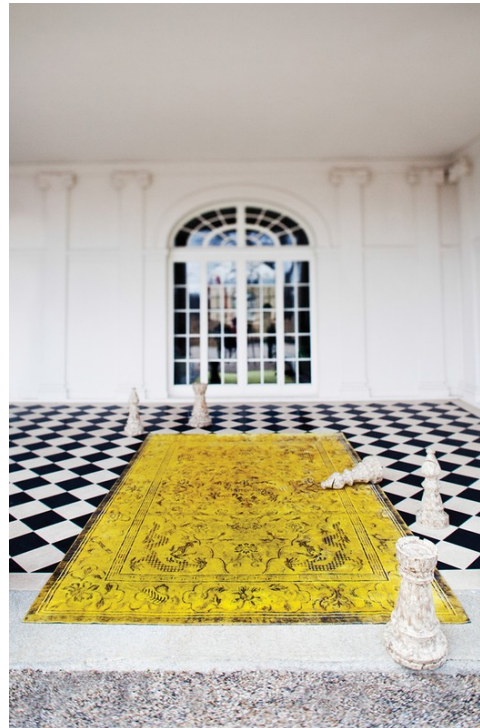


Natasha Louise King

# Art Department



AQUASILK



COLOR REFORM® silk  
evolutionary change through color



new york 212 674 1144 delray beach 561 492 7777 [abccarpet.com/color-reform](http://abccarpet.com/color-reform)

## Natasha Louise King

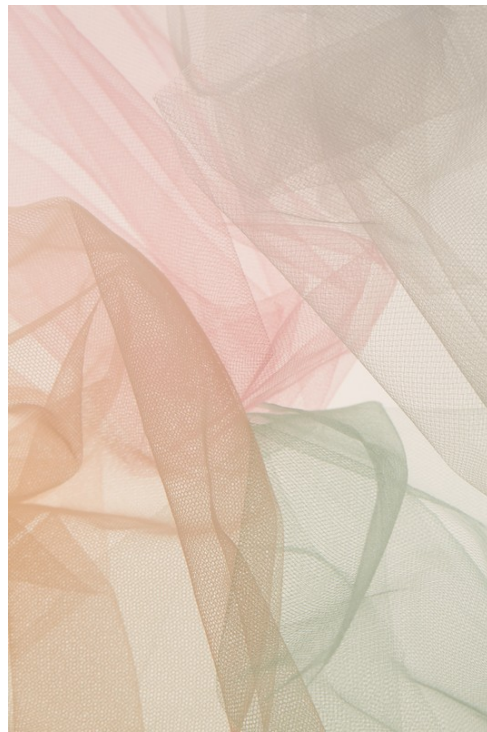
[www.art-dept.com](http://www.art-dept.com)

# Art Department



Natasha Louise King

# Art Department



Natasha Louise King

[www.art-dept.com](http://www.art-dept.com)

# Art Department



Natasha Louise King



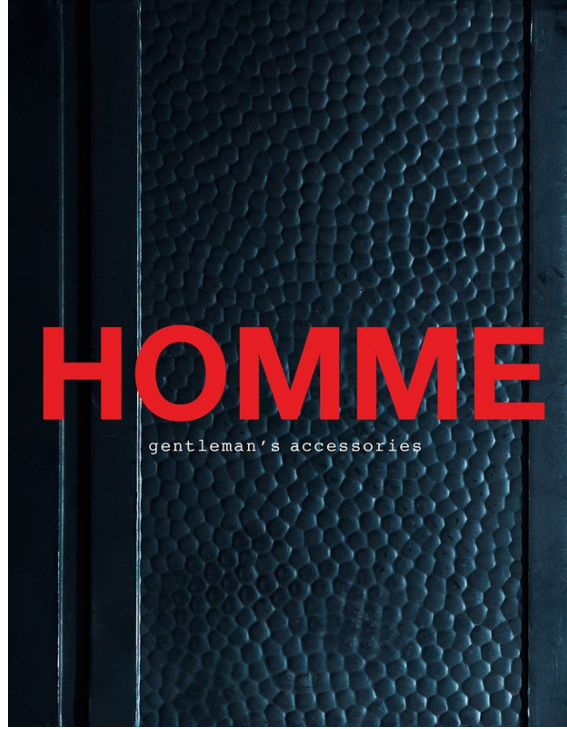


# Art Department



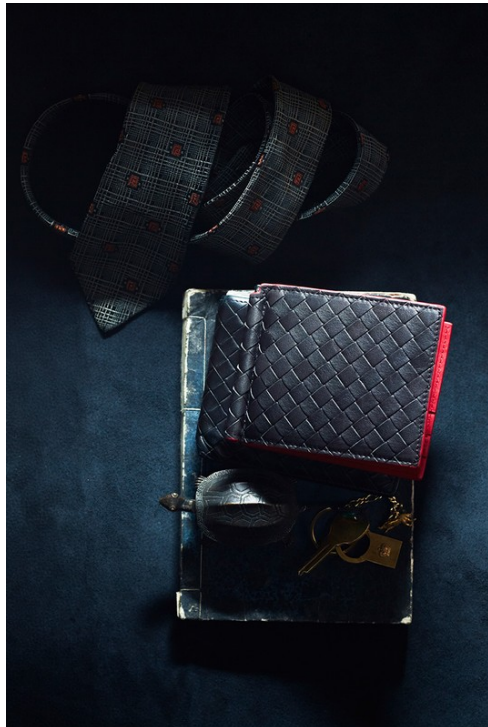
Natasha Louise King

# Art Department



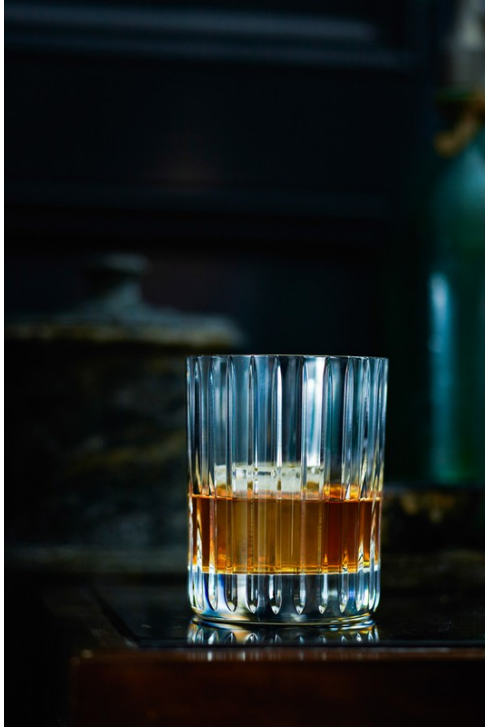
Natasha Louise King

# Art Department



Natasha Louise King

# Art Department



Natasha Louise King

[www.art-dept.com](http://www.art-dept.com)

# Art Department



Natasha Louise King

# Art Department



Natasha Louise King

# Art Department



Natasha Louise King

[www.art-dept.com](http://www.art-dept.com)