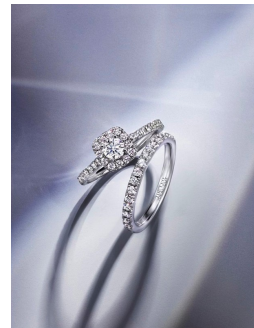
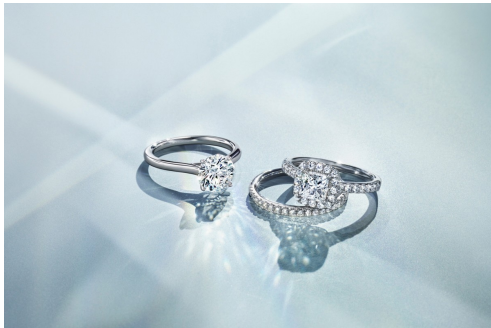
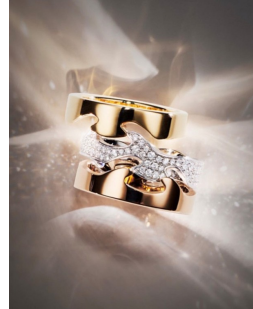


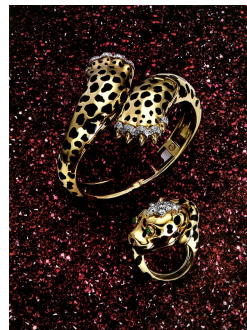
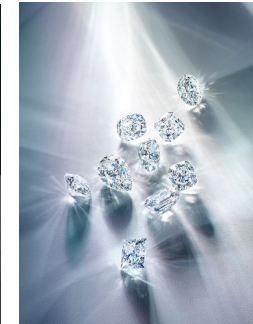
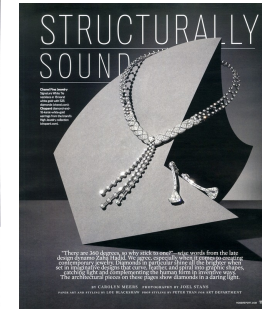
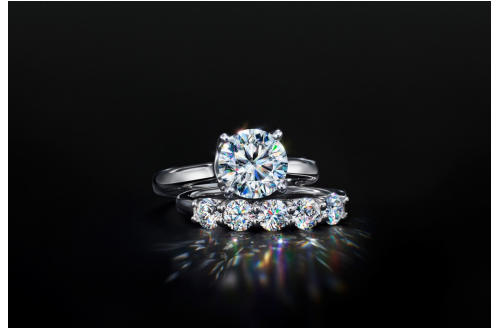
Art Department



Peter Tran

www.art-dept.com

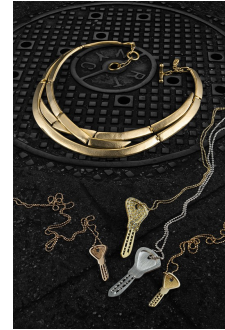
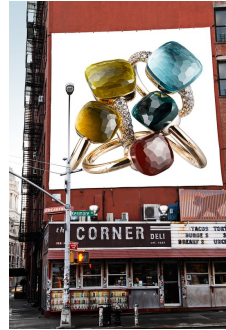
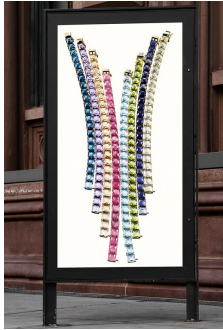
Art Department



Peter Tran

www.art-dept.com

Art Department



Peter Tran

www.art-dept.com

Art Department



BERGDORF GOODMAN
www.bergdorfgoodman.com
New York, NY
April 2011



April 2011



Not-So-Heavy Metal
perfect for today's savvy watch-lover



TEARS of JOY
Old world elegance in a new twist on the teardrop-shaped earring. The look is new, but the feel is both simple and dramatic. -www.designer-train.com
by WARDEN FARRIS. PHOTOGRAPHY BY NIGEL COLE



BERGDORF GOODMAN



POMELLATO



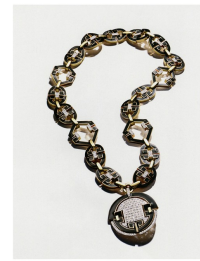
BAYCO



STEPHEN WEBSTER



de GRISOGONO

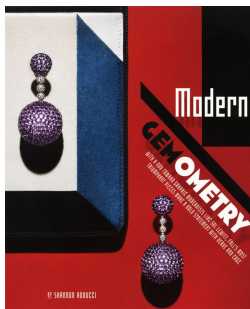


DAVID WEBB

BERGDORF GOODMAN



FARAONE MENNELLA



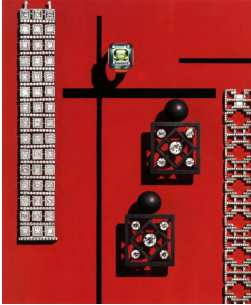
Modern GEMOMETRY
BY SANDRO BALECCI



Peter Tran

www.art-dept.com

Art Department



Peter Tran

www.art-dept.com