

# Art Department



Zac Mitchell



# Art Department



Zac Mitchell

[www.art-dept.com](http://www.art-dept.com)



# Art Department



Zac Mitchell

[www.art-dept.com](http://www.art-dept.com)



# Art Department



Zac Mitchell

[www.art-dept.com](http://www.art-dept.com)



# Art Department

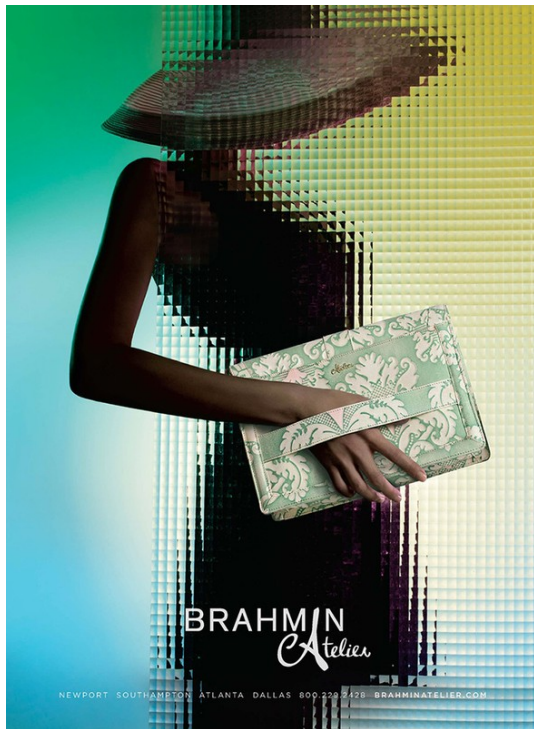


Zac Mitchell

[www.art-dept.com](http://www.art-dept.com)



# Art Department



Zac Mitchell

[www.art-dept.com](http://www.art-dept.com)



# Art Department



## Zac Mitchell

[www.art-dept.com](http://www.art-dept.com)



# Art Department



**OPPOSITE PAGE:**  
**HOODED FIELD COAT**  
 COLOR: Marshwood, FABRIC: Cotton, Imported. Machine wash. \$189 / 4272032

**WASHED TWILL CHINO SHIRT**  
 \$69 / 4272035

**SHORT-SLEEVE SHORT CREW**  
 COLOR: Gray, Material: 100% Cotton, Imported. Machine wash. \$49 / 4272033

**WASHED FATIGUE SHORT**  
 COLOR: Pine, Fabric: 100% Cotton, Imported. Machine wash. \$69 / 4272037

**FIELD CARGO SHORT**  
 COLOR: Dark Khaki (see link), Dark Olive, FABRIC: Cotton, Ripstop, Imported. Machine wash. \$89 / 4272034

**BEAN'S ZIPPER DUFFLE**  
 COLOR: Blending (black), Olive, Black, Medium and Large also in Blending. MATERIAL: Heavy cotton canvas, Barbour handles, Imported. \$149 / 4272036

**WAXED CARVAS**  
**MAINE HUNTING SHOE**  
 COLOR: Marsh Brown, Brown, White, Olive, Brown, Olive, Brown, Brown, WATERFALL, Waxed canvas upper, Multiple. Made in Switzerland. One size. \$119 / 4272005

22/23



**TRIN PANTS:**  
**CHAMBRAY SHIRT**  
 COLOR: Irish Flannel, FABRIC: Cotton, Imported. Machine wash. \$69 / 4272031

**SIGNATURE BELT**  
 \$69 / 4272032

**WASHED FATIGUE PANT**  
 COLOR: Pine, Dark, Olive, Camo, Caravel, FABRIC: Cotton, Imported. Machine wash. \$119 / 4272038

**LEATHER**  
**MAINE HUNTING SHOE**  
 COLOR: Brown, Brown, WATERFALL, Leather, Made in Maine. Measures 12" in length. \$189 / 4272044

**OPPOSITE PAGE:**  
**LASTPORT HANDBAG**  
**BLUCHER MOC, RANGER MOC AND RANGER BOOT**  
 COLOR: Brown (shown in Ranger Moc), Blue, WATERFALL, Embroidered. \$119 / 4272032

**SIGNATURE FIELD WATCH**  
 COLOR: Black, WATERFALL, Nylon straps with leather buckles. Made in Switzerland. One size. \$129 / 4272039

**VINTAGE METAL FIELD WATCH**  
 COLOR: Silver (shown), Gold, WATERFALL, Polished brushed metal, 100% stainless steel case. Made in Switzerland. One size. \$229 / 4272037

**LEAVES WORK JACKET**  
 COLOR: Saddle, FABRIC: Cotton, Imported. Machine wash. \$129 / 4272033

**HUNTER'S PLAID SHIRT**  
 COLOR: Royal Blue (shown), Red, Tan, Olive, Mossy Oak, FABRIC: Cotton, Imported. Machine wash. \$69 / 4272037

© LILBEANSIGNATURE.COM / 800-690-5975

## Zac Mitchell

www.art-dept.com



# Art Department

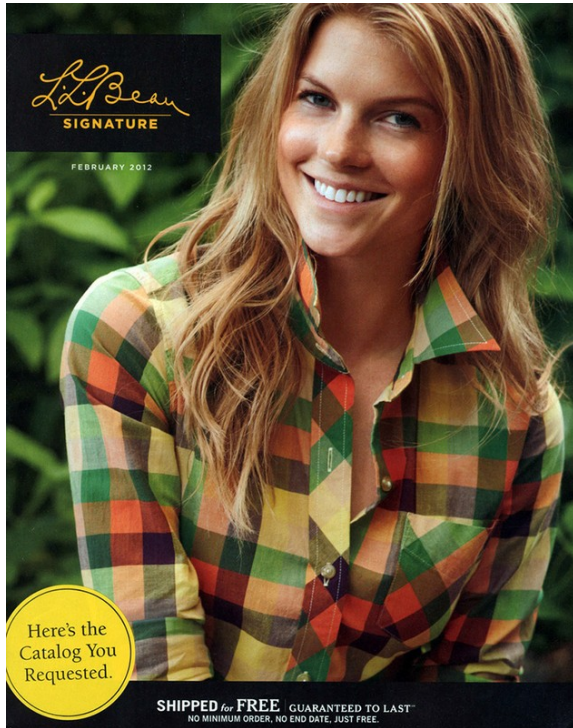


Zac Mitchell

[www.art-dept.com](http://www.art-dept.com)



# Art Department



Zac Mitchell

[www.art-dept.com](http://www.art-dept.com)



# Art Department



*jord + taylor*

Zac Mitchell

[www.art-dept.com](http://www.art-dept.com)



# Art Department

**crewcuts**  
for ages 2-10.

MAKE YOUR LIST. check it twice...  
something for the little ones,  
naughty and nice... something for  
everyone at [crewcutkids.com](http://crewcutkids.com).

**LOOK 1**  
lightweight flannel shirt  
Crewcuts® light-weight flannel shirt, crew neck, long sleeves, button front, 100% cotton, \$12.99  
solid short dress pant  
solid short dress pant, crew neck, long sleeves, button front, 100% cotton, \$12.99  
Crewcuts® \$10

**LOOK 2**  
cashmere & silk dress  
cashmere & silk dress, crew neck, long sleeves, button front, 100% cotton, \$12.99  
Crewcuts® \$10

**LOOK 3**  
grey wool legacy jacket  
grey wool legacy jacket, crew neck, long sleeves, button front, 100% cotton, \$12.99  
Crewcuts® \$10

**LOOK 4**  
black wash basket jacket  
black wash basket jacket, crew neck, long sleeves, button front, 100% cotton, \$12.99  
Crewcuts® \$10

**LOOK 5**  
cashmere & silk sweater  
cashmere & silk sweater, crew neck, long sleeves, button front, 100% cotton, \$12.99  
Crewcuts® \$10

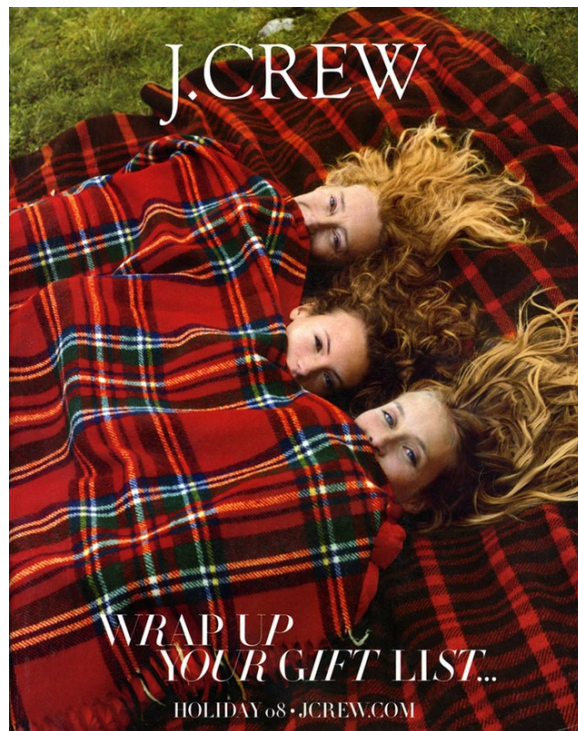


Zac Mitchell

[www.art-dept.com](http://www.art-dept.com)



# Art Department

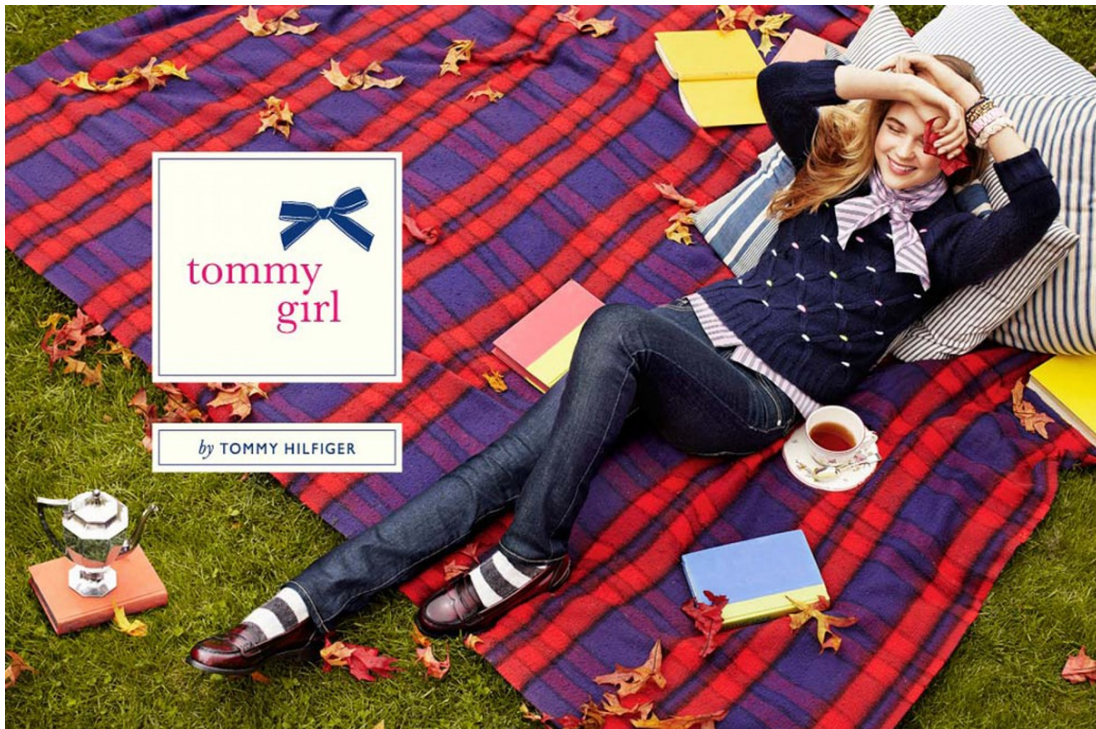


Zac Mitchell

[www.art-dept.com](http://www.art-dept.com)



# Art Department



Zac Mitchell

[www.art-dept.com](http://www.art-dept.com)



# Art Department



Zac Mitchell

[www.art-dept.com](http://www.art-dept.com)



# Art Department



Zac Mitchell

[www.art-dept.com](http://www.art-dept.com)



# Art Department



Zac Mitchell

[www.art-dept.com](http://www.art-dept.com)



# Art Department



Zac Mitchell

[www.art-dept.com](http://www.art-dept.com)



# Art Department



Zac Mitchell

[www.art-dept.com](http://www.art-dept.com)



# Art Department



Zac Mitchell

[www.art-dept.com](http://www.art-dept.com)



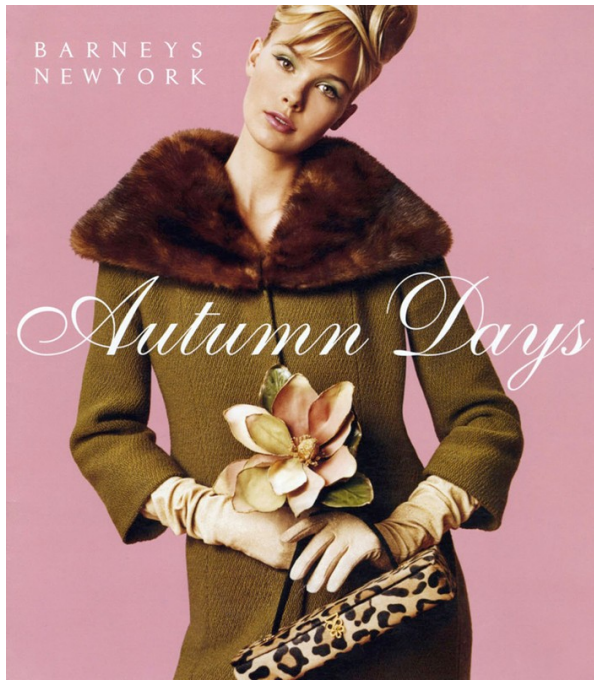
# Art Department



Zac Mitchell



# Art Department



Zac Mitchell

www.art-dept.com



# Art Department



happy to unwind

- 14000 gas grill 139.99
- monocle Bistro table and (2) chairs set 149.99
- decorative crates 39.99
- copper finish oil lamps 9.99
- fire bowl 59.99
- fire pit bench 29.99
- string lights 8.88
- copper finish torch light 14.99

happy inside



shop in-store or online at target.com

spring break 06



wish you were here



EXPECT MORE. PAY LESS.

## Zac Mitchell

[www.art-dept.com](http://www.art-dept.com)



# Art Department



Zac Mitchell

[www.art-dept.com](http://www.art-dept.com)