

Art Department



Zac Mitchell

www.art-dept.com

Art Department



ELIE TAHARI

Zac Mitchell

www.art-dept.com

Art Department



Zac Mitchell

www.art-dept.com

Art Department



Zac Mitchell

www.art-dept.com

Art Department



Zac Mitchell

www.art-dept.com

Art Department



Zac Mitchell

www.art-dept.com

Art Department



Zac Mitchell

www.art-dept.com

Art Department



Zac Mitchell

www.art-dept.com

Art Department



Zac Mitchell

www.art-dept.com

Art Department



Zac Mitchell

www.art-dept.com

Art Department



Zac Mitchell

www.art-dept.com

Art Department



Zac Mitchell

www.art-dept.com

Art Department



Zac Mitchell

www.art-dept.com

Art Department



Zac Mitchell

www.art-dept.com

Art Department



BRAHMIN
Redefining timeless style

Brahmin.com 800.229.2428
Newport | Southampton | Atlanta | Dallas

Zac Mitchell

www.art-dept.com

Art Department



Zac Mitchell

www.art-dept.com

Art Department



Zac Mitchell

www.art-dept.com

Art Department



Zac Mitchell

www.art-dept.com

Art Department



OPPOSITE PAGE:

HOODED FIELD COAT

COLOR: Marshwood. **FABRIC:** Cotton. Imported. Machine wash. **SIZE:** S-XXL. \$249 / cf275032

WASHED TWILL CHINO SHIRT

SEE PAGE 25

SHORT-SLEEVE SPORT CREW

COLOR: Gray Heather (on him, left), Antique Red (on him, right), Ebony. **FABRIC:** Cotton and polyester. Imported. Machine wash. **SIZE:** S-XXL. \$69 / cf275036

WASHED FATIGUE SHORT

COLOR: Pine Bark (on him), Caramel. **FABRIC:** Cotton. Imported. Machine wash. **WAIST:** Even 30-42, plus 31, 33, 35. \$59 / cf274997

THIS PAGE:

FIELD CARGO SHORT

COLOR: Dark Khaki (on him), Dark Navy. **FABRIC:** Cotton ripstop. Imported. Machine wash. **WAIST:** Even 30-42, plus 31, 33, 35. \$79 / cf274994

BEAN'S ZIPPER DUFFLE

COLOR: Kindling (shown), True Black. Medium and Large also in Bright Navy. **MATERIAL:** Waxed cotton canvas, leather handles. Imported. **MEASURES:** small 8 1/2" H x 16" W x 7 3/4" D, medium 12 3/4" H x 25" W x 12 1/2" D, large 14 3/4" H x 27" W x 14 3/4" D. \$125 / small / cf272945 \$150 / medium / cf270232 \$175 / large / cf266751

MEDIUM IN KINDLING NOT AVAILABLE

WAXED CANVAS MAINE HUNTING SHOE

COLOR: Marsh Brown/Brown (on him), Navy/Brown, Deep Forest/Brown. **MATERIAL:** Waxed canvas upper. Made in Maine. **WHOLE SIZE:** Medium D 7-14. \$139 / cf262905

Zac Mitchell

www.art-dept.com

Art Department



THIS PAGE:
CHAMBRAY SHIRT
COLOR: Dark Indigo. FABRIC: Cotton chambray. Imported. Machine wash. SIZE: S-XXL.
\$69 / cf273282

SIGNATURE BELT
SEE ONLINE.

WASHED FATIGUE PANT
COLOR: Pine Bark (on him), Caramel. FABRIC: Cotton. Imported. Machine wash. WAIST: Even 30-42, plus 31, 33, 35. INSEAM: 30", 32", 34", 36". 36" inseam only available in 34 waist and larger.
\$69 / cf276132

LEATHER MAINE HUNTING SHOE
COLOR: Brown/Brown. MATERIAL: Leather. Made in Maine. Measures 12" in height. WHOLE SIZE: Medium D 7-14.
\$185 / cf272944

OPPOSITE PAGE:
EASTPORT HANDSEWN BLUCHER MOC, RANGER MOC AND RANGER BOOT
COLOR: Brown (shown in Ranger Moc), Black. MATERIAL: Leather. Imported. SIZE: Medium D 7-12, 13, 14.
\$69 / blucher moc / cf262923
\$79 / ranger moc / cf262949
\$99 / ranger boot / cf270122

BLUCHER MOC IN BROWN NOT AVAILABLE

SIGNATURE FIELD WATCH
COLOR: Black. MATERIAL: Nylon straps with leather backing. Made in Switzerland. One size.
\$129 / cf276039

VINTAGE METAL FIELD WATCH
COLOR: Silver (shown), Gold. MATERIAL: Polished brushed metal, stainless-steel case. Made in Switzerland. One size.
\$225 / cf270171

CANVAS WORK JACKET
COLOR: Saddle. FABRIC: Cotton. Imported. Machine wash. SIZE: S-XXL.
\$129 / cf275033

HUNTER'S PLAID SHIRT
COLOR: Royal Blue/Adobe Red (on him), Mountain Blue. FABRIC: Cotton. Imported. Machine wash. SIZE: S-XXL.
\$69 / cf266777

@ LLBEANSIGNATURE.COM / 800-650-5975

Zac Mitchell

www.art-dept.com

Art Department



Zac Mitchell

www.art-dept.com

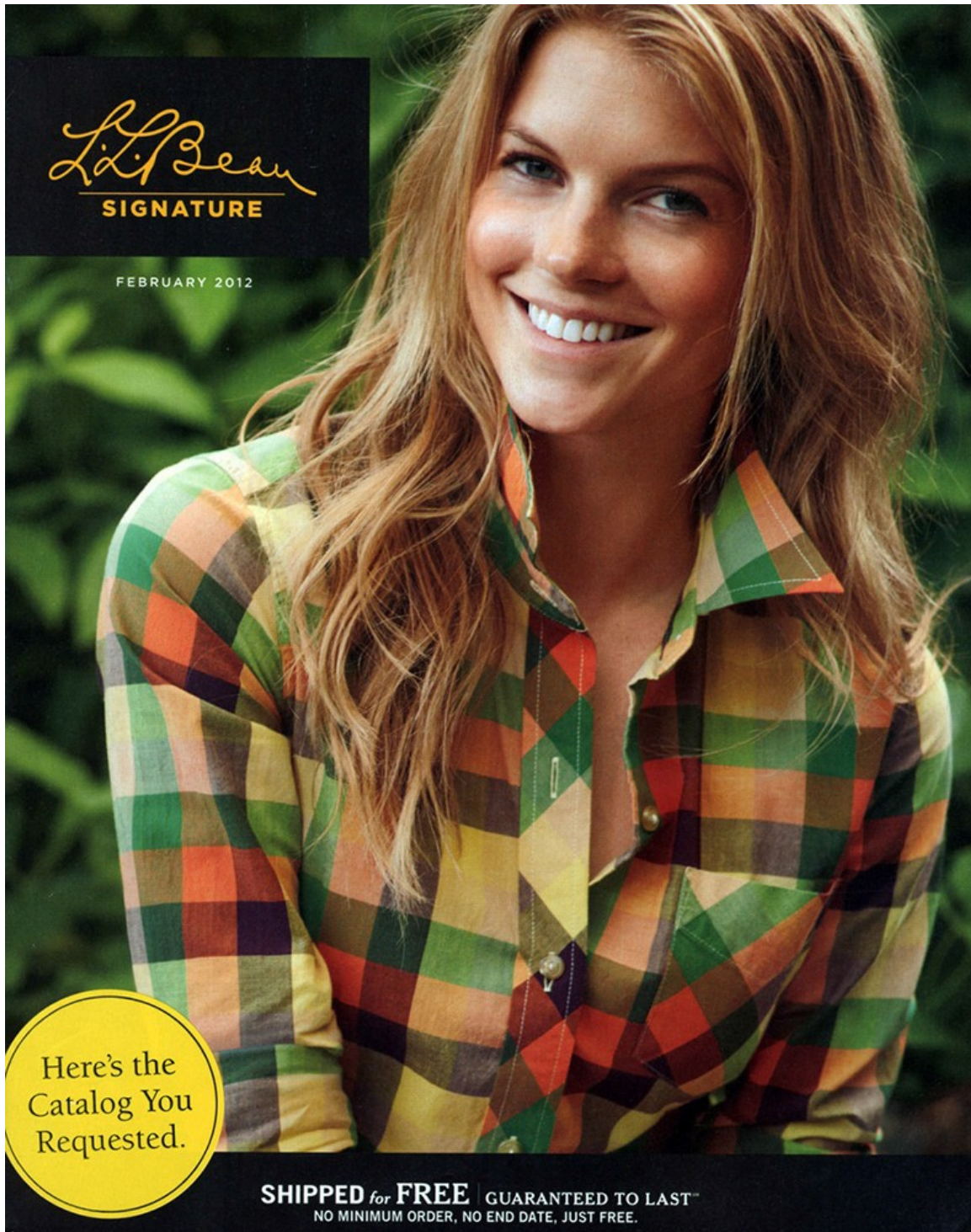
Art Department



Zac Mitchell

www.art-dept.com

Art Department



L.L. Bean
SIGNATURE

FEBRUARY 2012

Here's the
Catalog You
Requested.

SHIPPED for FREE | GUARANTEED TO LAST™
NO MINIMUM ORDER, NO END DATE, JUST FREE.

Zac Mitchell

www.art-dept.com

Art Department



Zac Mitchell

www.art-dept.com

Art Department



FREE \$10
GIFT CARD
WITH PURCHASE
OF \$50 OR MORE
SEE PAGE 2

L.L. Bean

SIGNATURE

N^o 1 | OUR SIGNATURE MARKS A NEW COLLECTION | SPRING
2010

Zac Mitchell

www.art-dept.com

Art Department



Zac Mitchell

www.art-dept.com

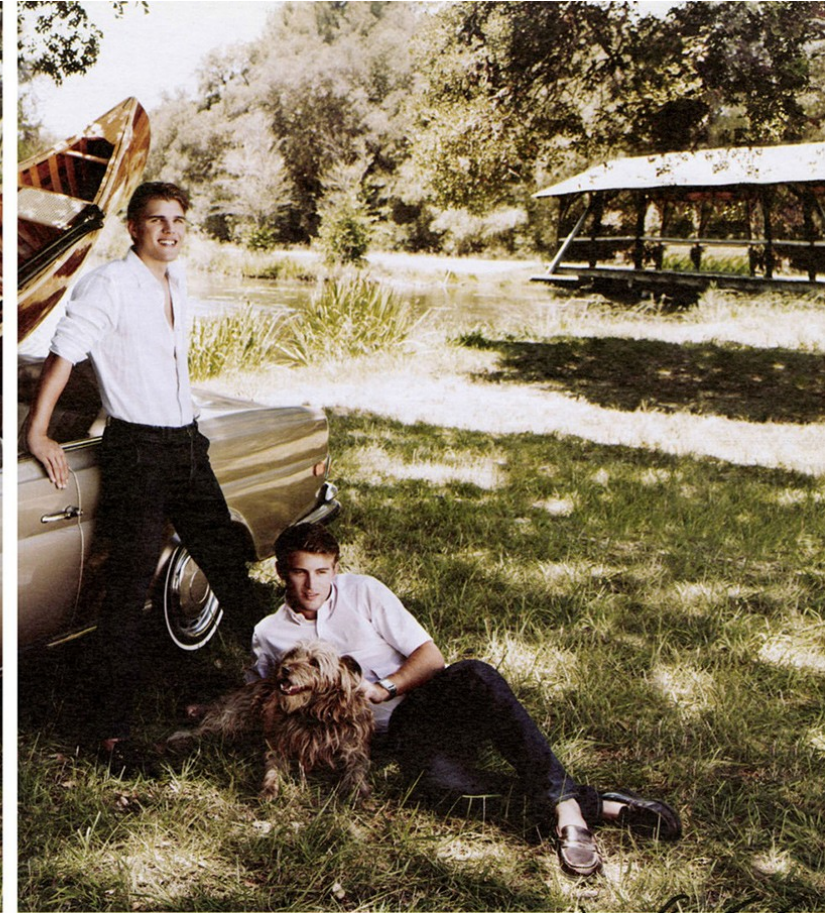
Art Department



Zac Mitchell

www.art-dept.com

Art Department



Jord + Taylor

Zac Mitchell

www.art-dept.com

Art Department



Zac Mitchell

www.art-dept.com

Art Department



Zac Mitchell

www.art-dept.com

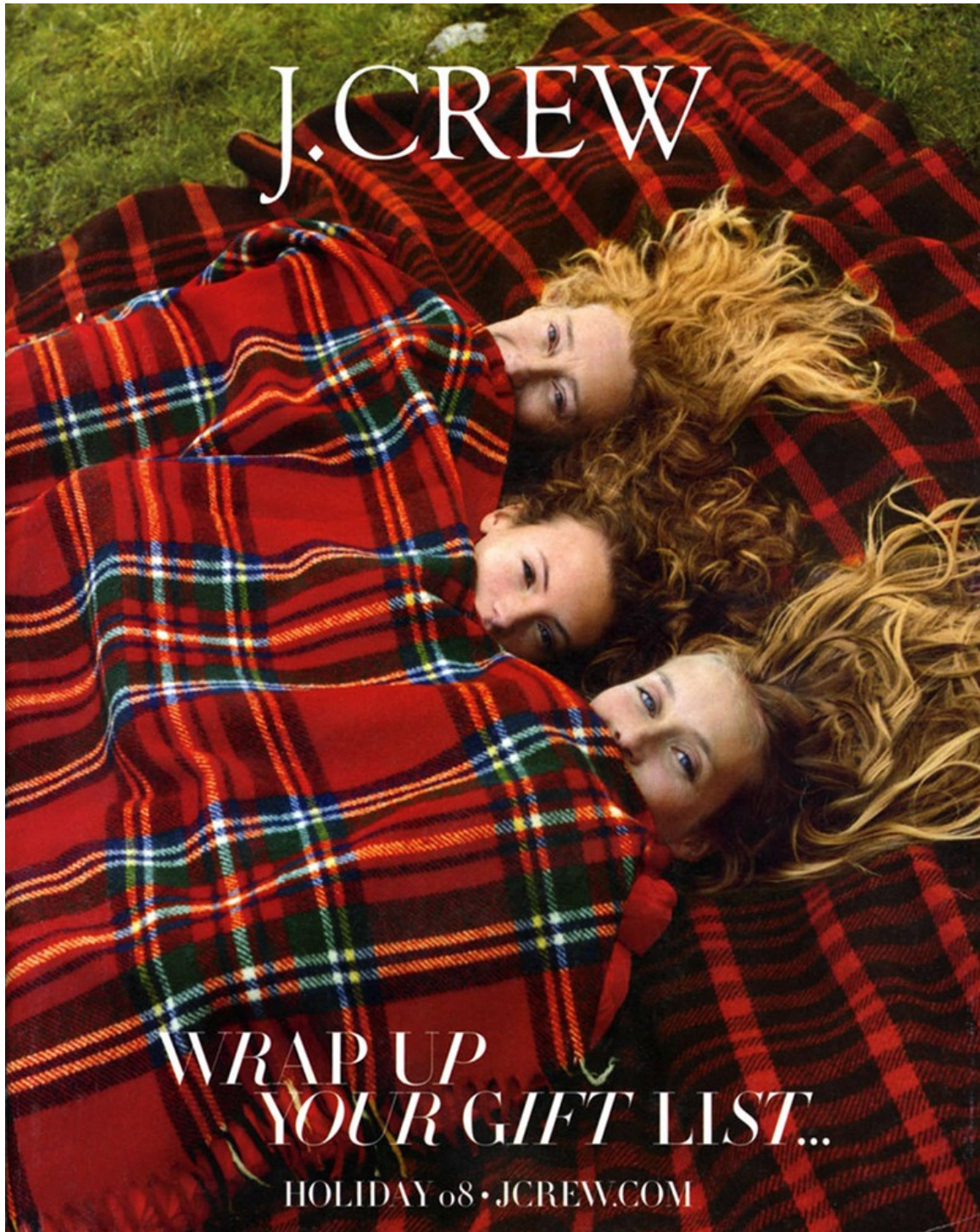
Art Department



Zac Mitchell

www.art-dept.com

Art Department



Zac Mitchell

www.art-dept.com

Art Department



Zac Mitchell

www.art-dept.com

Art Department



Zac Mitchell

www.art-dept.com

Art Department



Zac Mitchell

www.art-dept.com

Art Department



Zac Mitchell

www.art-dept.com

Art Department



Zac Mitchell

www.art-dept.com

Art Department



Zac Mitchell

www.art-dept.com

Art Department



Zac Mitchell

www.art-dept.com

Art Department



Zac Mitchell

www.art-dept.com

Art Department



Zac Mitchell

www.art-dept.com

Art Department



Zac Mitchell

www.art-dept.com

Art Department



TOMMY HILFIGER

the cozy
fair isle sweater

At Home With
THE HILFIGERS

Zac Mitchell

www.art-dept.com

Art Department



Zac Mitchell

www.art-dept.com

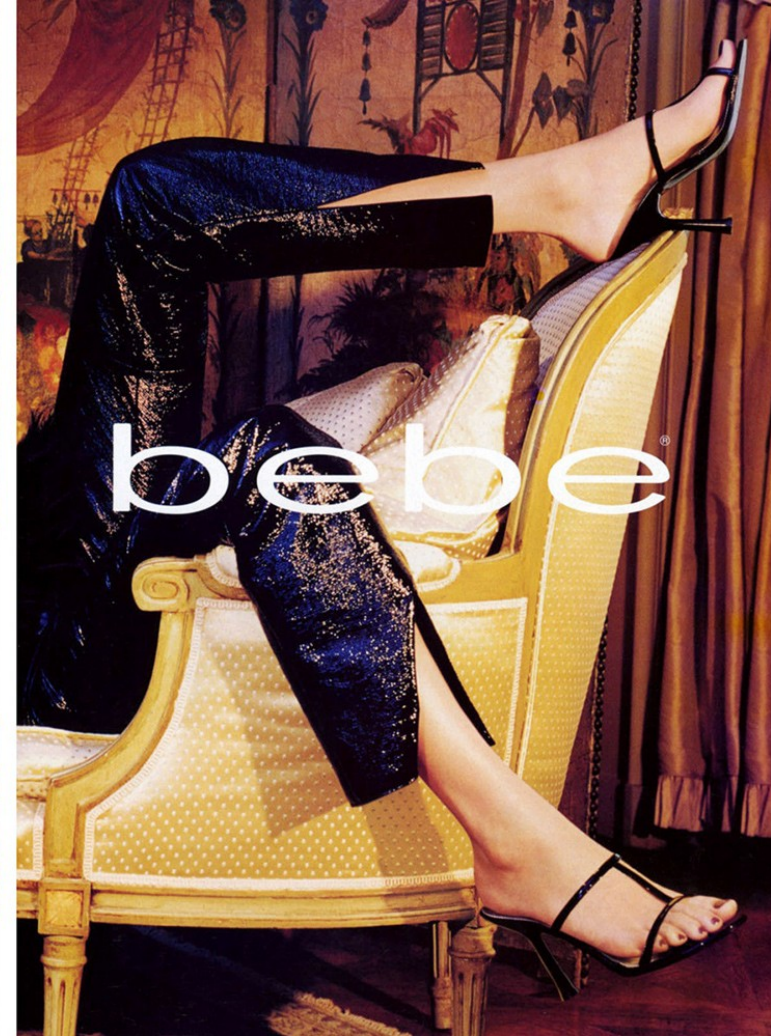
Art Department



Zac Mitchell

www.art-dept.com

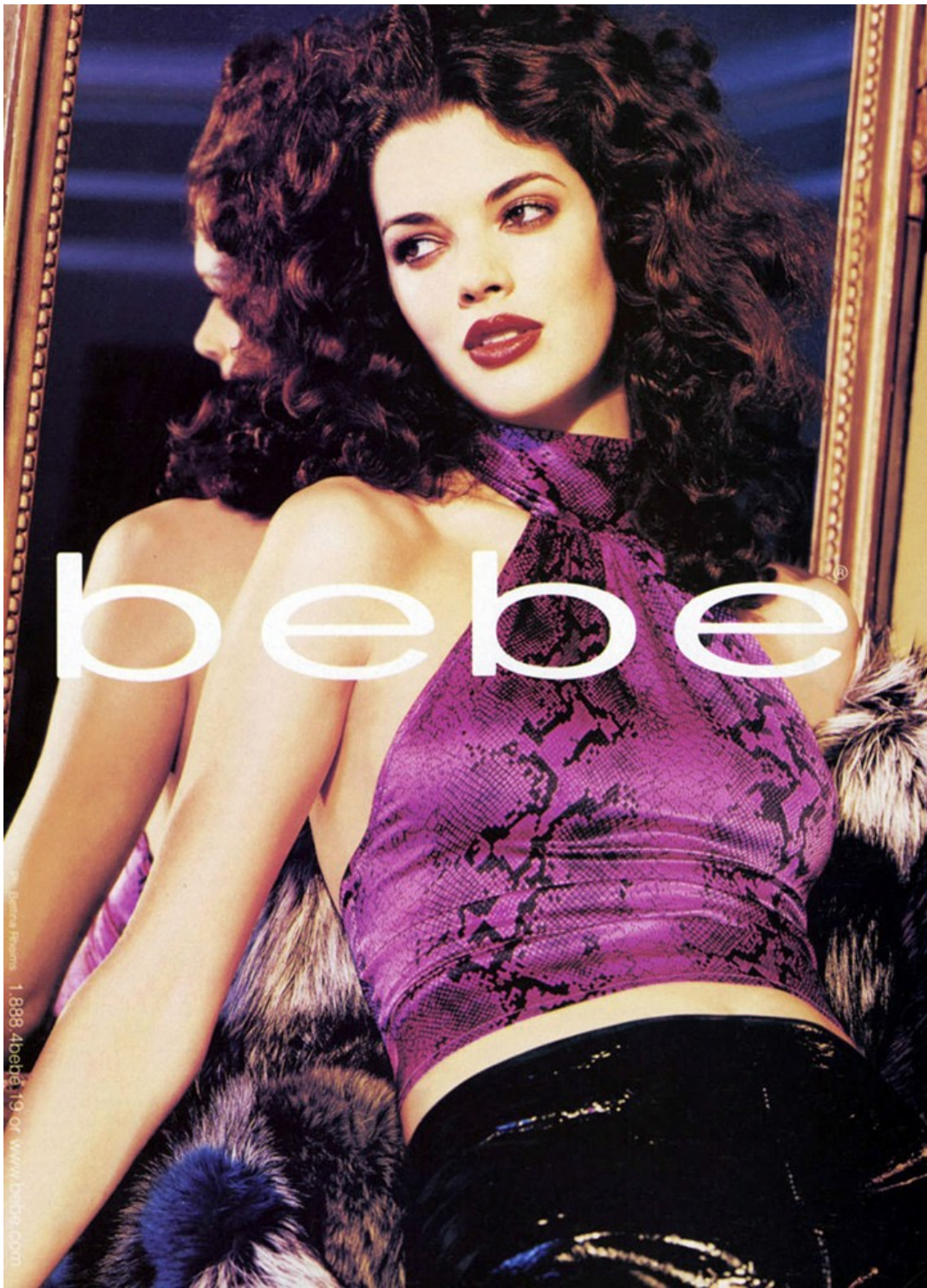
Art Department



Zac Mitchell

www.art-dept.com

Art Department



Zac Mitchell

www.art-dept.com

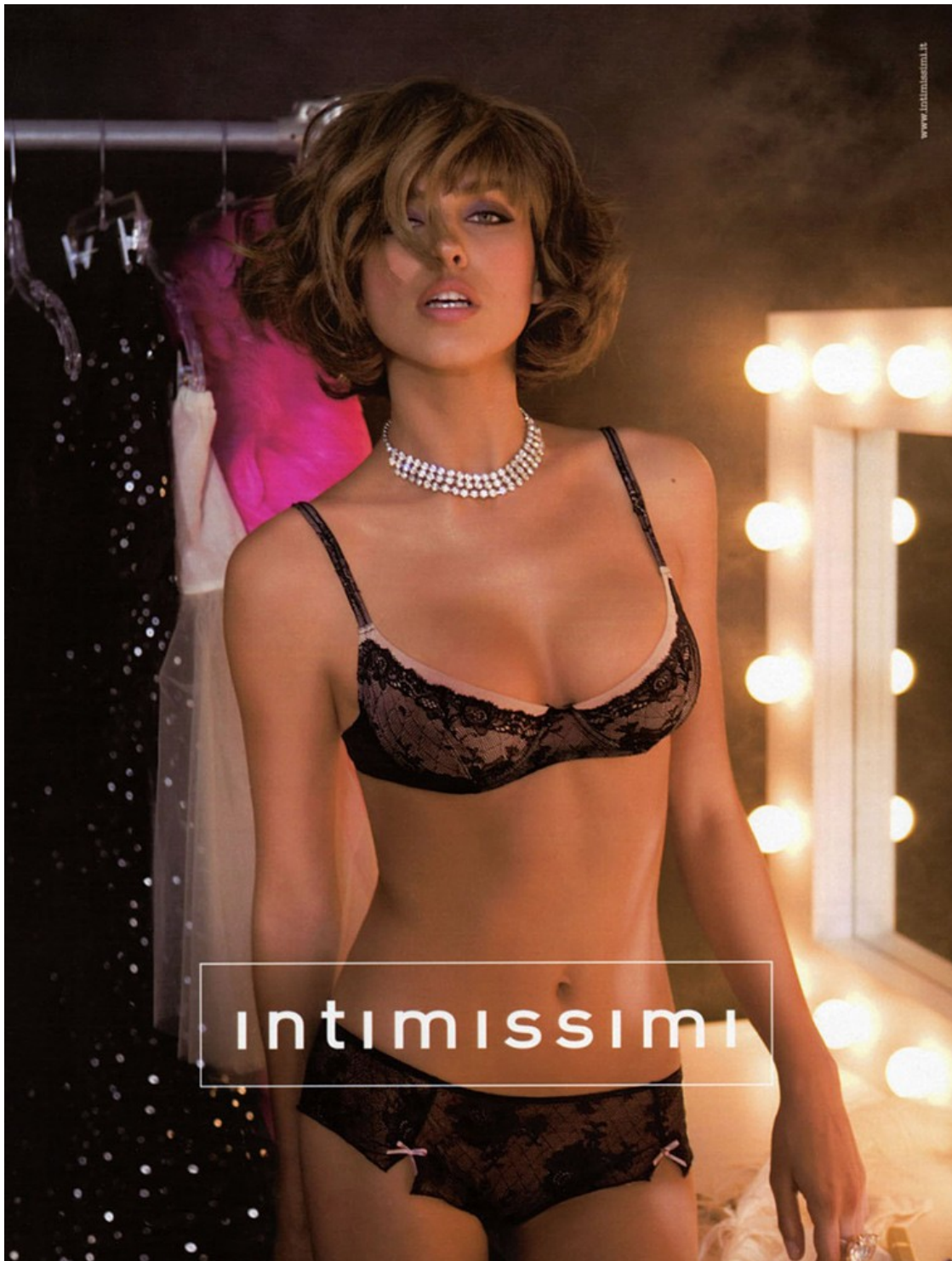
Art Department



Zac Mitchell

www.art-dept.com

Art Department



Zac Mitchell

www.art-dept.com

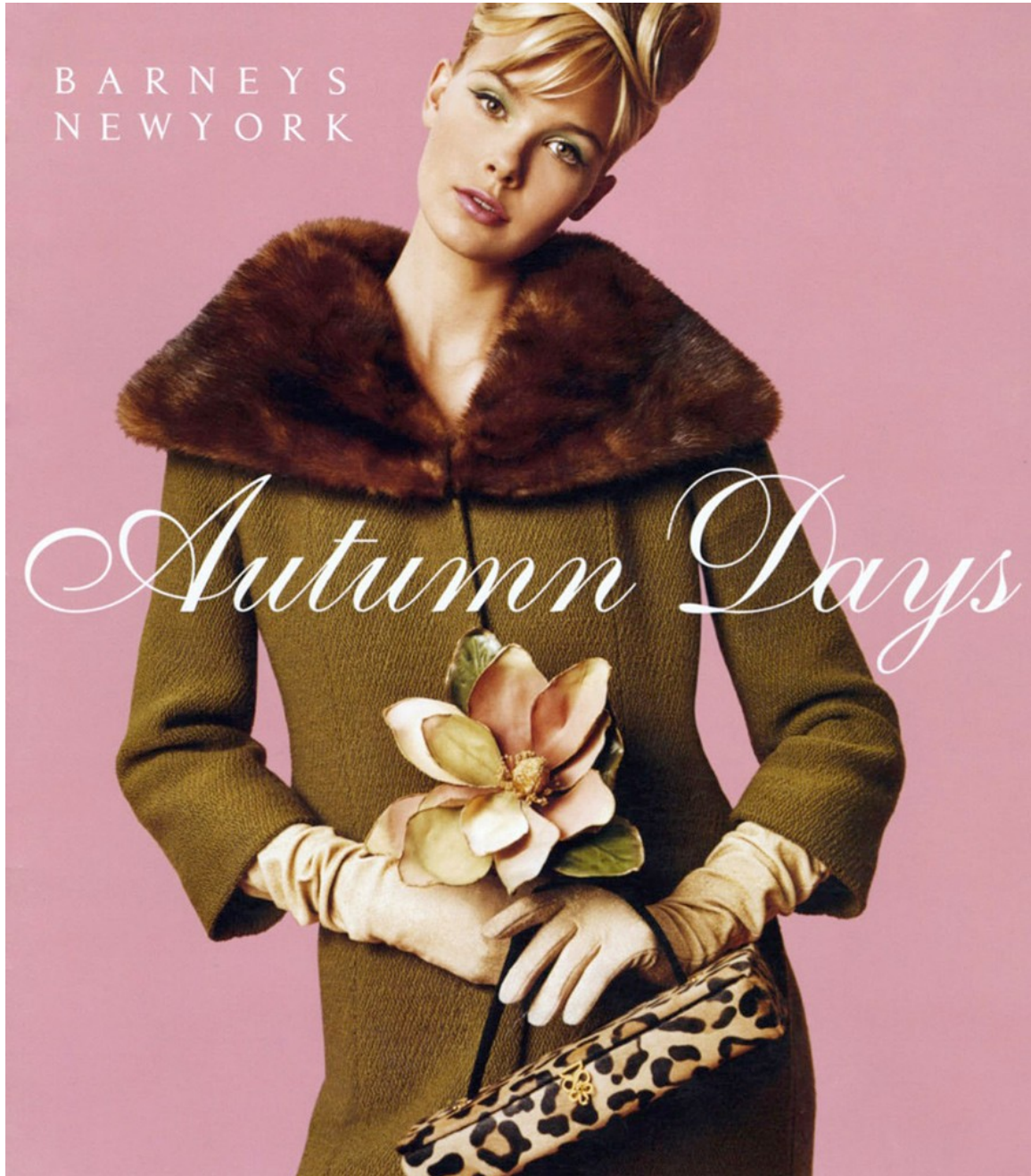
Art Department



Zac Mitchell

www.art-dept.com

Art Department



Zac Mitchell

www.art-dept.com

Art Department

*When the frost is on the punkin
and the fodder's in the shock,
And you hear the kyouck
and gobble of the struttin' turkey-cock,
And the clackin' of the guineys,
and the cluckin' of the hens,
And the rooster's hallylooyer
as he tiptoes on the fence;*

Pink and green tweed sheath dress with velvet trim \$450.
Satin embroidered bird clutch in nude. Also available in black, pearl, yellow and aqua \$935.
Suede silk lined long gloves in pink. Also available in black, tan and green \$245.



Zac Mitchell

www.art-dept.com

Art Department



Zac Mitchell

www.art-dept.com

Art Department



Zac Mitchell

www.art-dept.com

Art Department



happy to unwind

thermos®
14000 gas grill 139.99
mosaic bistro table and
(2) chair set 149.99
decorative cranes
39.99

copper finish
oil lamps 9.99
fire bowl 59.99
fire pit bench 29.99
string lights 8.88
copper finish torch
light 14.99

happy
inside



shop in-store or online
at target.com

Zac Mitchell

www.art-dept.com

Art Department



Zac Mitchell

www.art-dept.com

Art Department



Zac Mitchell

www.art-dept.com

Art Department



Zac Mitchell

www.art-dept.com