

# Art Department



Ana Monfort

[www.art-dept.com](http://www.art-dept.com)

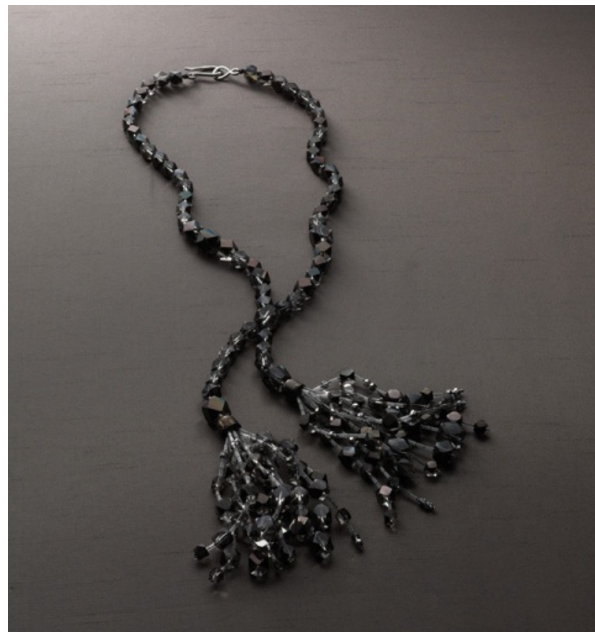
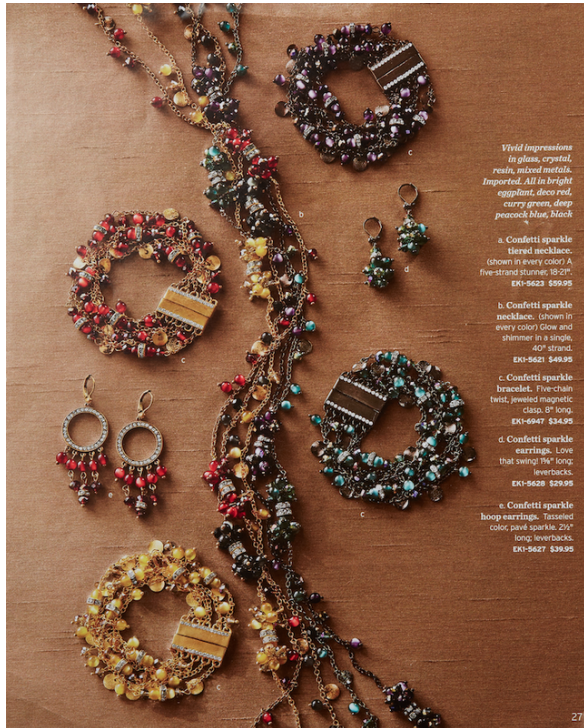
# Art Department



Ana Monfort

[www.art-dept.com](http://www.art-dept.com)

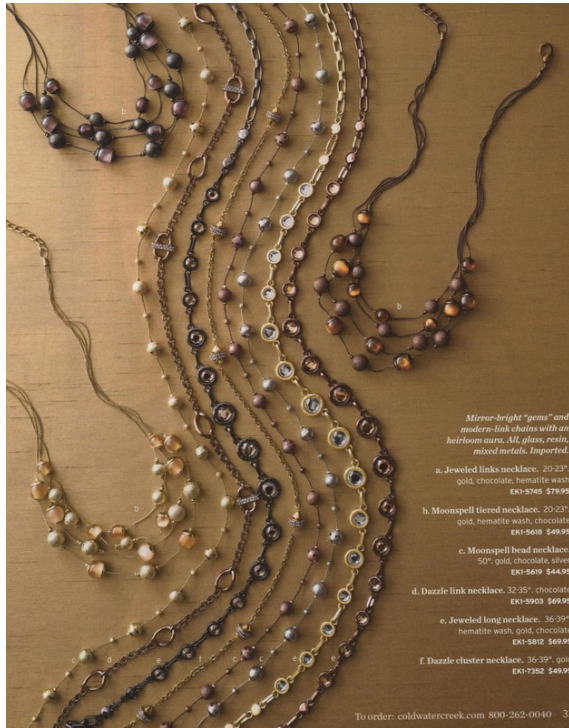
# Art Department



Ana Monfort

www.art-dept.com

# Art Department



*Mirror-bright "gems" and modern-link chains with an heirloom aura. All glass, resin, mixed metals. Imported.*

- a. Jeweled links necklace, 20-23", gold, chocolate, hematite wash EXI-5240 \$29.95
- b. Moonspell tiered necklace, 20-23", gold, hematite wash, chocolate EXI-5618 \$49.95
- c. Moonspell bead necklace, 50" gold, chocolate, silver EXI-5619 \$44.95
- d. Dazzle link necklace, 32-35" rhinoceros EXI-5903 \$69.95
- e. Jeweled long necklace, 36-39", hematite wash, gold, chocolate EXI-5812 \$69.95
- f. Dazzle cluster necklace, 36-39", gold EXI-7252 \$49.95

To order: coldwatercreek.com 800-262-0040 33



## THINK INSIDE THE BOX

*There's still time to shine. Just order by Dec. 20 and we'll make sure it arrives by Christmas. We can even gift box it for you! See page 24 for details.*

*Beautiful bangles in a celebration of color. Resin, Czech crystals, mixed metals. Imported. See more colors online.*

- a. Moonspell cuff/bracelet, 1 1/2" wide, chocolate, gold EXI-6229 \$29.95
- b. Deco enamel bracelet, 1" wide, deco red, dark resin EXI-5688 \$39.95
- c. Resin and jewel bangle, 1 1/2" wide, yellow, deco red, deep bright eggplant, curry green, deep peacock blue EXI-9044 \$29.95
- d. Rhinoceros bracelet, 1 1/2" wide, deco red EXI-5985 \$29.95

To order: coldwatercreek.com 800-262-0040 33



## Ana Monfort

www.art-dept.com

# Art Department



Ana Monfort

[www.art-dept.com](http://www.art-dept.com)

# Art Department



Ana Monfort

[www.art-dept.com](http://www.art-dept.com)

# Art Department



find your treasure  
Opulent bangles add sparkle & shine.

Glass and glimmer with ice-cool accents. All imported. See more colors online at [coldwatercreek.com](http://coldwatercreek.com).  
 a. Marrakesh bracelet. Inlaid stone rings. Hinged fit. Ivory. Black. VK1-8225 \$26.95  
 b. Etched enamel bracelet. Hinged clasp. Ivory. Black. VK1-8326 \$39.95  
 c. Jeweled enamel bangle. Crystal accents. Hinged fit. 1/2" wide. Ivory. VK1-8733 \$26.95  
 d. Jeweled elephant bangle. Crystal accents. Hinged fit. 1/2" wide. Ivory. VK1-8321 \$26.95  
 e. Sultanah bracelet. Two-tone polished resin. Magnetic closure. Ivory. VK1-8277 \$26.95  
 f. Tribal bangle. Polished, multi-faceted resin. Clear. VK1-8118 \$36.95

See what's in store for summer find yours at [coldwatercreek.com](http://coldwatercreek.com)



## FIND YOUR TREASURE

Sparkling beads, radiant bangles, scarves that capture your glow. In hues from sunwarmed golds to sea-washed greens. Let the adventure begin ... there's even more to discover at [coldwatercreek.com](http://coldwatercreek.com).

All imported, unless otherwise noted.

- A. CARIBE SHIMMER NECKLACE TK1-8252 \$69.95
- B. SULTANA NECKLACE TK1-8271 \$59.95
- C. KARIMERA LONG NECKLACE TK1-8254 \$69.95
- D. JEWELLED ENAMEL BANGLE TK1-8733 \$26.95
- E. TROPIC GLOW BRACELET (USA) TK1-8328 \$39.95
- F. ARABESQUE RING TK1-8258 \$29.95
- G. LOTUS JEWEL RING TK1-8259 \$29.95
- H. ANGELA SUNGLASSES TK1-7785 \$29.95
- I. SULTANA PENDANT NECKLACE TK1-8272 \$59.95
- J. PAINTED DASHY NECKLACE TK1-7870 \$19.95
- K. LUMINESCE BRACELET TK1-8250 \$49.95
- L. CARAVAN RING TK1-8772 \$29.95
- M. COLORFLOW BRACELETS TK1-8329 \$49.95 (set of 2)
- N. SHIMMERY OMBRE SCARF TK1-8065 \$39.95
- O. SULTANA LONG NECKLACE TK1-8270 \$69.95
- P. SPARKLE STYRE BRACELET TK1-8251 \$49.95
- Q. MARRAKESH BRACELET TK1-8325 \$39.95
- R. ETCHED ENAMEL BRACELET TK1-8326 \$39.95
- S. VIVID WATERCOLORS SCARF TK1-7612 \$29.95

sequins supima tee (opposite page) page 25  
 \* CATALOG & ONLINE EXCLUSIVE

# Ana Monfort

[www.art-dept.com](http://www.art-dept.com)