

Art Department



Peter Tran

www.art-dept.com

Art Department



Peter Tran

www.art-dept.com

Art Department



Peter Tran

www.art-dept.com

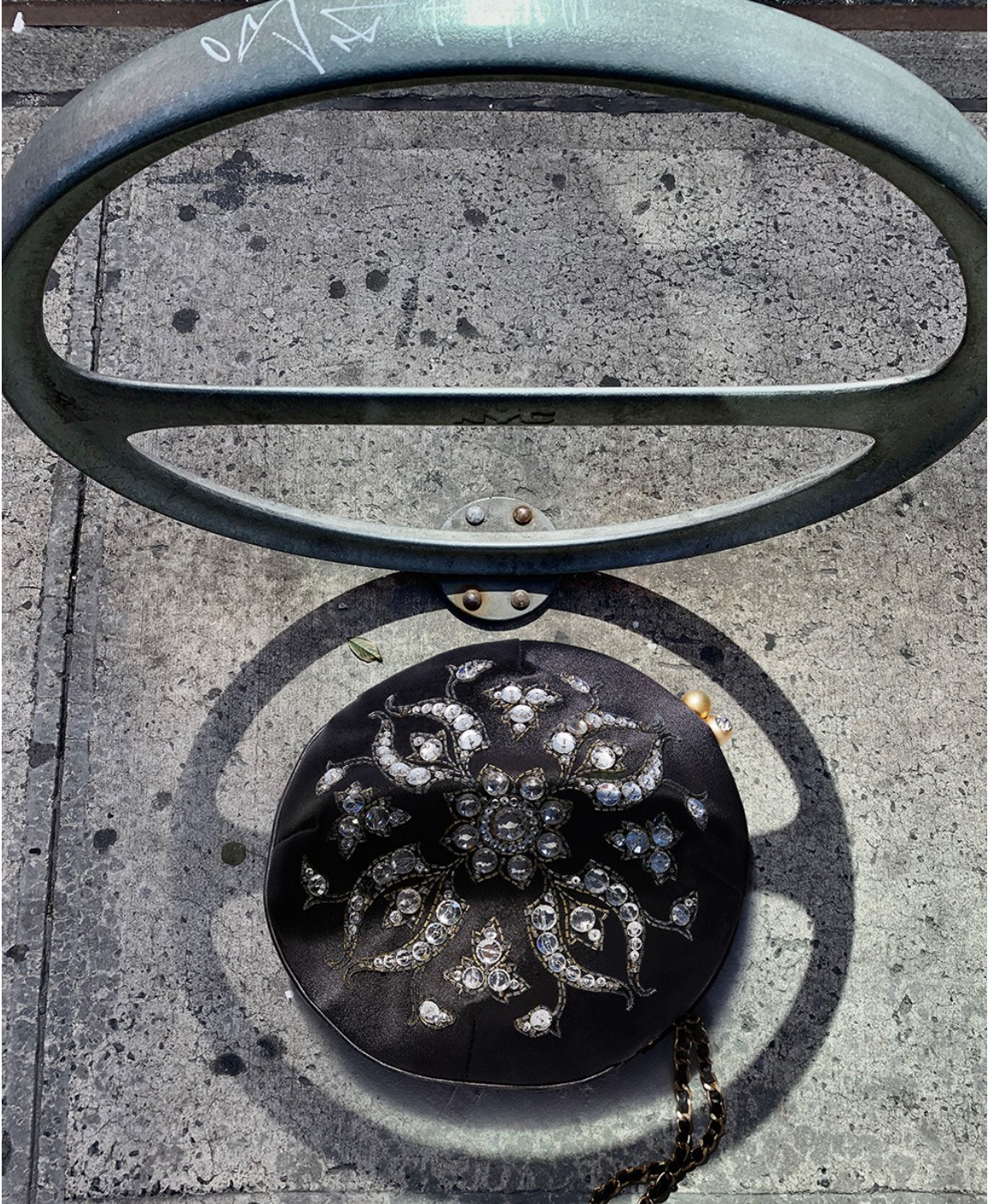
Art Department



Peter Tran

www.art-dept.com

Art Department



Peter Tran

www.art-dept.com

Art Department



Peter Tran

www.art-dept.com

Art Department



Peter Tran

www.art-dept.com

Art Department



Peter Tran

www.art-dept.com

Art Department



Peter Tran

www.art-dept.com

Art Department



Peter Tran

www.art-dept.com

Art Department



Peter Tran

www.art-dept.com

Art Department



Peter Tran

www.art-dept.com

Art Department



Peter Tran

www.art-dept.com

Art Department



Peter Tran

www.art-dept.com

Art Department



Peter Tran

www.art-dept.com

Art Department



Peter Tran

www.art-dept.com

Art Department



Peter Tran

www.art-dept.com

Art Department



Peter Tran

www.art-dept.com

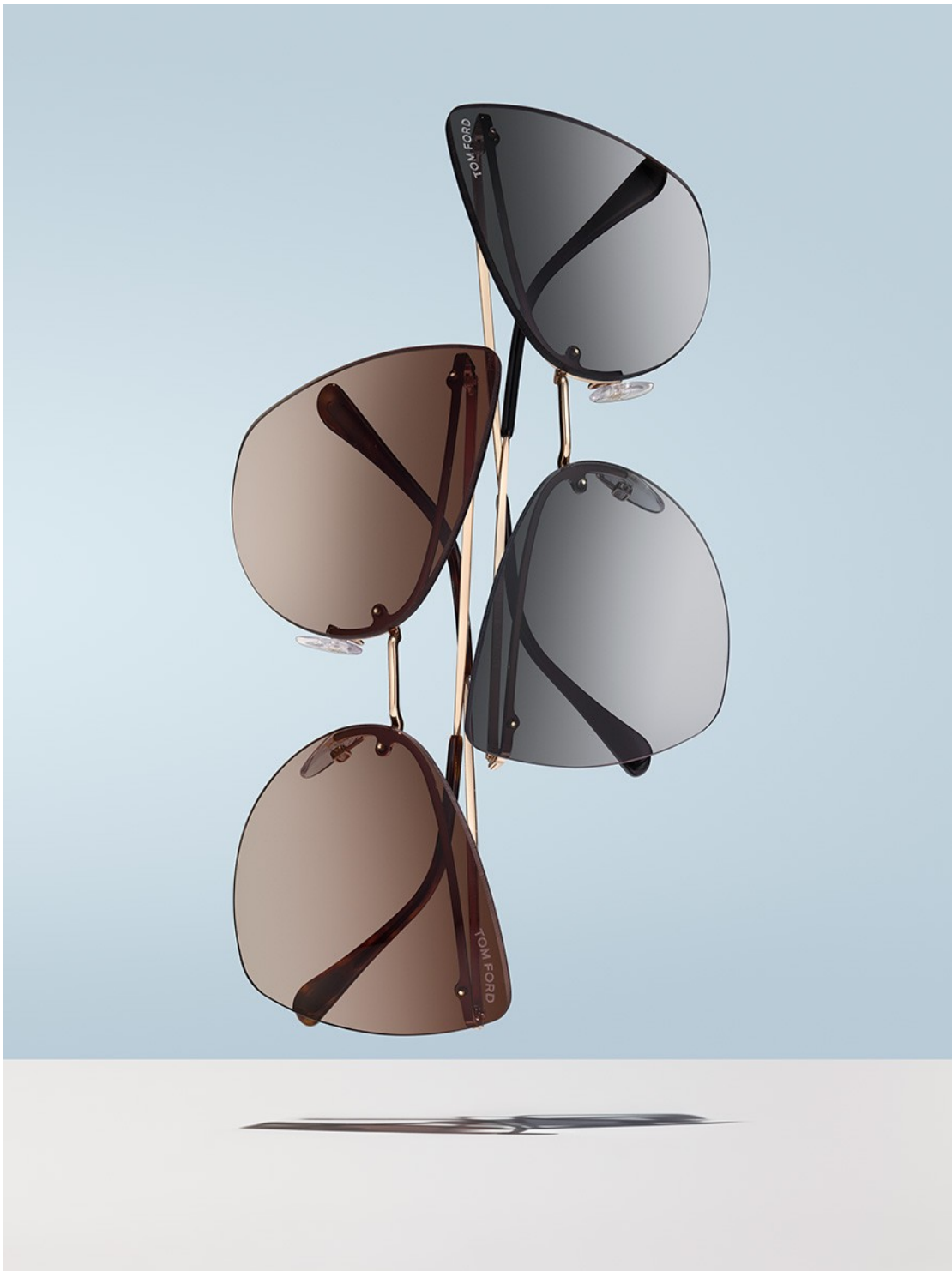
Art Department



Peter Tran

www.art-dept.com

Art Department



Peter Tran

www.art-dept.com

Art Department



Peter Tran

www.art-dept.com

Art Department



Peter Tran

www.art-dept.com

Art Department



Peter Tran

www.art-dept.com

Art Department

EXTRA-SPECIAL

EXTRAS!

Get ready to shine bright! Meet the bold spring trends that take your accessories from a supporting role to smack-dab center stage

Photographs by NIGEL COX

Melle Bianco
Faux leather bag, \$50;
mellebianco.com
30% OFF!

The advertisement features a central image of a black and white horizontally striped bag with a black strap and buckle, set against a background of yellow and light blue geometric shapes. The text is arranged in a dynamic, overlapping manner, with 'EXTRA-SPECIAL' and 'EXTRAS!' in large, bold, sans-serif fonts. A smaller, tilted text box contains a promotional message. The bottom right corner includes product details and a discount offer.

Peter Tran

www.art-dept.com

Art Department



Peter Tran

www.art-dept.com

Art Department



Peter Tran

www.art-dept.com

Art Department



Peter Tran

www.art-dept.com

Art Department



Peter Tran

www.art-dept.com

Art Department



Peter Tran

www.art-dept.com

Art Department



Peter Tran

www.art-dept.com

Art Department



Peter Tran

www.art-dept.com

Art Department



Peter Tran

www.art-dept.com

Art Department



Peter Tran

www.art-dept.com

Art Department



Peter Tran

www.art-dept.com

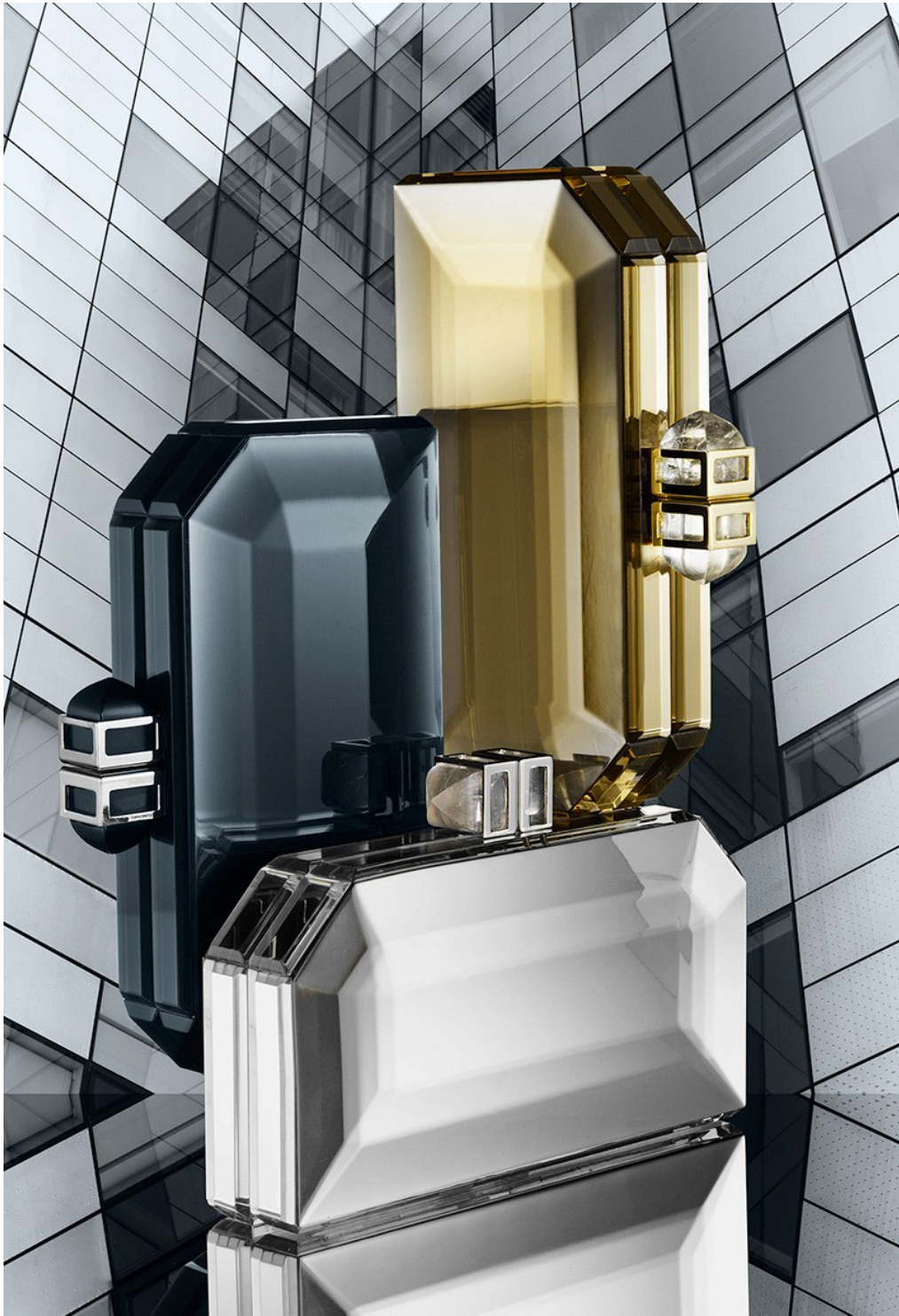
Art Department



Peter Tran

www.art-dept.com

Art Department



Peter Tran

www.art-dept.com

Art Department



Peter Tran

www.art-dept.com

Art Department



Peter Tran

www.art-dept.com

Art Department



Peter Tran

www.art-dept.com

Art Department



Peter Tran

www.art-dept.com

Art Department



Peter Tran

www.art-dept.com

Art Department



Peter Tran

www.art-dept.com

Art Department



Peter Tran

www.art-dept.com

Art Department



Peter Tran

www.art-dept.com

Art Department



Peter Tran

www.art-dept.com

Art Department



Peter Tran

www.art-dept.com

Art Department



Peter Tran

www.art-dept.com

Art Department



Peter Tran

www.art-dept.com

Art Department



Peter Tran

www.art-dept.com

Art Department



Peter Tran

www.art-dept.com

Art Department



Peter Tran

www.art-dept.com

Art Department



Peter Tran

www.art-dept.com

Art Department



Peter Tran

www.art-dept.com

Art Department



Peter Tran

www.art-dept.com

Art Department



Peter Tran

www.art-dept.com

Art Department



Peter Tran

www.art-dept.com

Art Department



Peter Tran

www.art-dept.com

Art Department



Peter Tran

www.art-dept.com

Art Department



Peter Tran

www.art-dept.com

Art Department



Peter Tran

www.art-dept.com

Art Department



Peter Tran

www.art-dept.com

Art Department



Peter Tran

www.art-dept.com

Art Department



Peter Tran

www.art-dept.com

Art Department



Peter Tran

www.art-dept.com

Art Department



Peter Tran

www.art-dept.com

Art Department



Peter Tran

www.art-dept.com

Art Department



Peter Tran

www.art-dept.com

Art Department



Peter Tran

www.art-dept.com

Art Department



Peter Tran

www.art-dept.com

Art Department



Peter Tran

www.art-dept.com

Art Department



CRAZY ABOUT
Small-Scale Handbags!

10 COMPACT WAYS TO
MAKE A BIG STATEMENT

PHOTOGRAPHY BY NIGEL COX

ALEXANDER MCQUEEN
22a Calfskin "Horsebit" mini satchel, in royal blue, black, or red. \$1,595.
July Designer Handbags



SAINT LAURENT
23a Calfskin "Duffel 3" handbag, in red, black, dark brown, green, pink, brown, or tan. France. \$1,550.

NANCY GONZALEZ
23b Crocodile "Crocini" small tote, in purple, green, black, or red. \$2,950.

PROENZA SCHOUER
23c Chain or black calfskin "9511 Toy Classic" handbag. Italy. \$1,425.

CHLOÉ
23d Calfskin "Marine" mini satchel, in white, black, brown, orange, or navy. Italy. \$1,650.

GIVENCHY
23a Quilted calfskin mini "Pandora Box" handbag. Italy. \$1,715.

GUCCI
23f Felted leather "Gucci" handbag, in orange, green, champagne, or black. Italy. \$1,800.

FENDI
23g Cherry or black lambskin "Mini Peekaboo" handbag. Italy. \$2,750.

ALEXANDER WANG
23h Lambskin "Bastion" duffel bag, in green, black, olive, or light blue. Italy. \$795.

VERSACE
23i Medusa dyed goat (suede) and plum calfskin "Bara 10" satchel. Italy. \$1,500.

Available in Designer Handbags.

Peter Tran

www.art-dept.com

Art Department



Peter Tran

www.art-dept.com

Art Department



Peter Tran

www.art-dept.com

Art Department



R.J. GRAZIANO
Raffia and wood
bead necklace.

TORY BURCH
Raffia and leather
wedges.

DOLCE & GABBANA
Raffia tote with
calfskin trim.

ALBERTUS SWANEPOEL
Raffia fedora with
cotton-rayon band.

InStyle / APRIL 2013 387

Peter Tran

www.art-dept.com

Art Department



Peter Tran

www.art-dept.com

Art Department



InStyle / APRIL 2013 389

Peter Tran

www.art-dept.com

Art Department



Peter Tran

www.art-dept.com

Art Department



Peter Tran

www.art-dept.com

Art Department



Peter Tran

www.art-dept.com

Art Department



Peter Tran

www.art-dept.com

Art Department



Peter Tran

www.art-dept.com

Art Department



Peter Tran

www.art-dept.com

Art Department



Peter Tran

www.art-dept.com

Art Department



Peter Tran

www.art-dept.com

Art Department



Peter Tran

www.art-dept.com

Art Department



Peter Tran

www.art-dept.com

Art Department



Peter Tran

www.art-dept.com

Art Department

JIMMY CHOO Platform sandals in bordeaux suede and mesh with bordeaux and ruby crystal embellishment. 4 3/4" heel with platform. Sizes 5-12M. Italy. \$2,495. Second Floor.

OPPOSITE **LOEWE** "1901" clutch in oxblood calfskin. Also available in rouge, dark teal, taupe or black. Lizard version available in magenta, royal blue, purple or steel. 6.5" high x 11.2" wide x 1.7" deep. Spain. Calfskin clutch \$1,195. Lizard clutch \$2,250. Main Floor.



Peter Tran

www.art-dept.com

Art Department



Peter Tran

www.art-dept.com

Art Department



Peter Tran

www.art-dept.com

Art Department



Peter Tran

www.art-dept.com

Art Department



Peter Tran

www.art-dept.com

Art Department



Peter Tran

www.art-dept.com