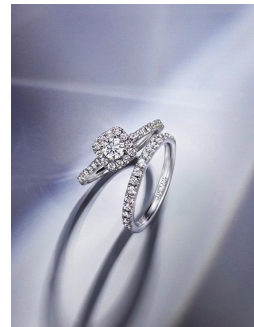
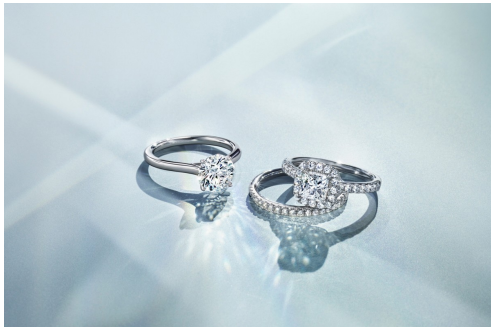
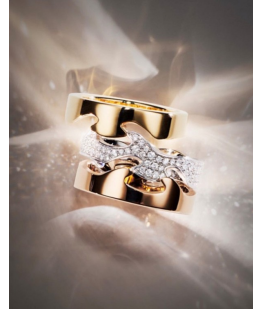


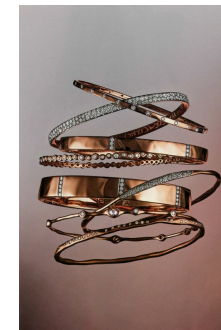
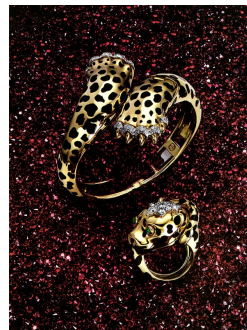
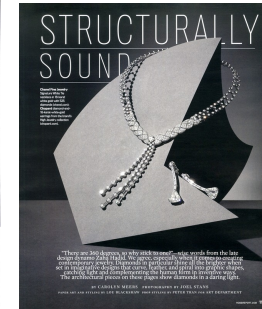
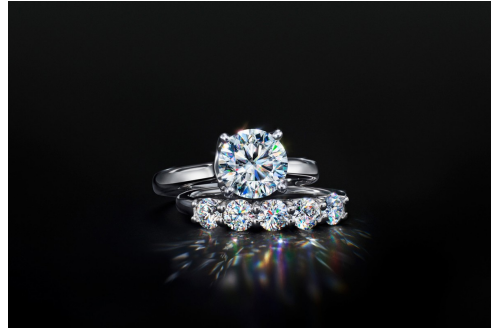
# Art Department



Peter Tran

[www.art-dept.com](http://www.art-dept.com)

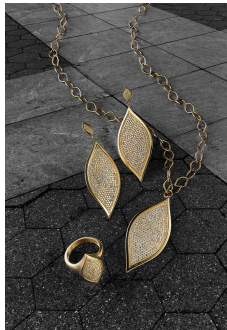
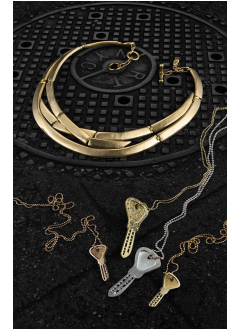
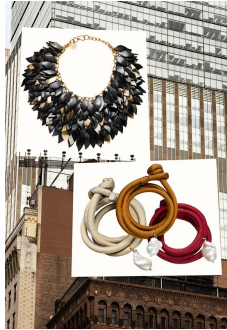
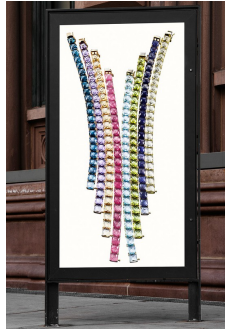
# Art Department



Peter Tran

[www.art-dept.com](http://www.art-dept.com)

# Art Department



Peter Tran

[www.art-dept.com](http://www.art-dept.com)

# Art Department



BERGDORF GOODMAN  
www.bergdorfgoodman.com  
New York, NY  
© 2011 Bergdorf Goodman



April 2011



**Not-So-Heavy Metal**

April 2011



**TEARS of JOY**

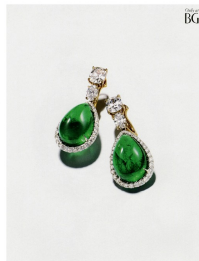
Old world elegance is back in party mode in the teardrop-shaped designs. "The look is very feminine, both simple and dramatic," says designer Peter Tran. Photo by WARDEN FARRIS. Photo courtesy of MUSE.COM



BERGDORF GOODMAN



POMELLATO



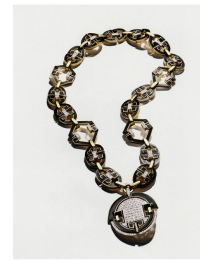
BAYCO



STEPHEN WEBSTER



de GRISOGONO

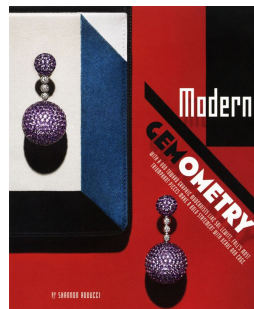


DAVID WEBB

BERGDORF GOODMAN



FARAONE MENNELLA



Modern

**GEMOMETRY**

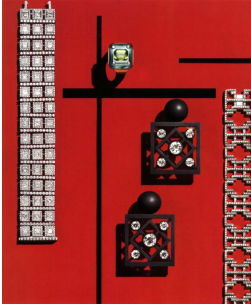
BY SANDRO BALECCI



## Peter Tran

[www.art-dept.com](http://www.art-dept.com)

# Art Department



Peter Tran

[www.art-dept.com](http://www.art-dept.com)