

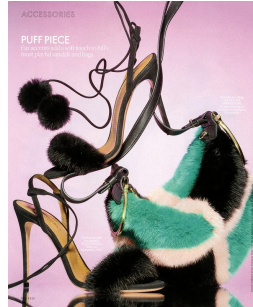
# Art Department



Peter Tran

[www.art-dept.com](http://www.art-dept.com)

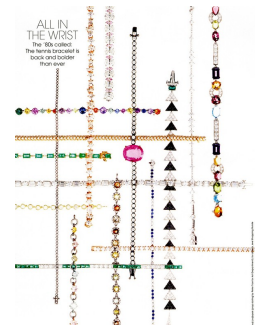
# Art Department



Peter Tran

[www.art-dept.com](http://www.art-dept.com)

# Art Department



Peter Tran

www.art-dept.com

# Art Department



**BLOCK-BUSTER**  
Whether black, red, or purple, patchwork is a classic choice for boots. The color to the boot is the boot's best accessory.



**HAMMER TIME**  
Not the "hugger" look with heavy metal, but accessories that are heavy on the eye.



**ACCESSORIES**  
**GRAPHIC CONTENT**  
High-contrast black patterns and transparent panels that create a graphic effect.



**ACCESSORIES**  
**BLOCK PARTY**  
A collection of colorful, multi-colored handbags, shoes, and scarves that create a vibrant, multi-colored look.



**SWEET TART**  
The color of a tart is a classic choice for accessories. The color of a tart is a classic choice for accessories.



**CARDINAL DIRECTION**  
The color of a cardinal is a classic choice for accessories. The color of a cardinal is a classic choice for accessories.



**BLUE NOTE**  
The color of a blue note is a classic choice for accessories. The color of a blue note is a classic choice for accessories.



**ACCESSORIES**  
**SHEER GENIUS**  
Cut across the middle and wrapped with lace, the sheer's best look is one that's not so subtle.



**SWING VOICE**  
The color of a swing voice is a classic choice for accessories. The color of a swing voice is a classic choice for accessories.



**BELLES OF THE BALL**  
The secret to affordable ballroom design is to use the same materials as the expensive ones.



**QUIET RIOT**  
Said a quiet and serene, the quiet is a classic choice for accessories. The quiet is a classic choice for accessories.



**FOILED AGAIN**  
The color of a foiled again is a classic choice for accessories. The color of a foiled again is a classic choice for accessories.



**LUXE LIFE**  
The color of a luxe life is a classic choice for accessories. The color of a luxe life is a classic choice for accessories.



**ACCESSORIES**  
**FLYING HIGH**  
The color of a flying high is a classic choice for accessories. The color of a flying high is a classic choice for accessories.



**STAYING POWER**  
The color of a staying power is a classic choice for accessories. The color of a staying power is a classic choice for accessories.



**EASY DOES IT**  
The color of an easy does it is a classic choice for accessories. The color of an easy does it is a classic choice for accessories.



**ACCESSORIES**  
**PATTERN PLAY**  
The color of a pattern play is a classic choice for accessories. The color of a pattern play is a classic choice for accessories.



**L'HEURE BLEUE**  
The color of an heure bleue is a classic choice for accessories. The color of an heure bleue is a classic choice for accessories.

Peter Tran

[www.art-dept.com](http://www.art-dept.com)

# Art Department



Peter Tran

[www.art-dept.com](http://www.art-dept.com)