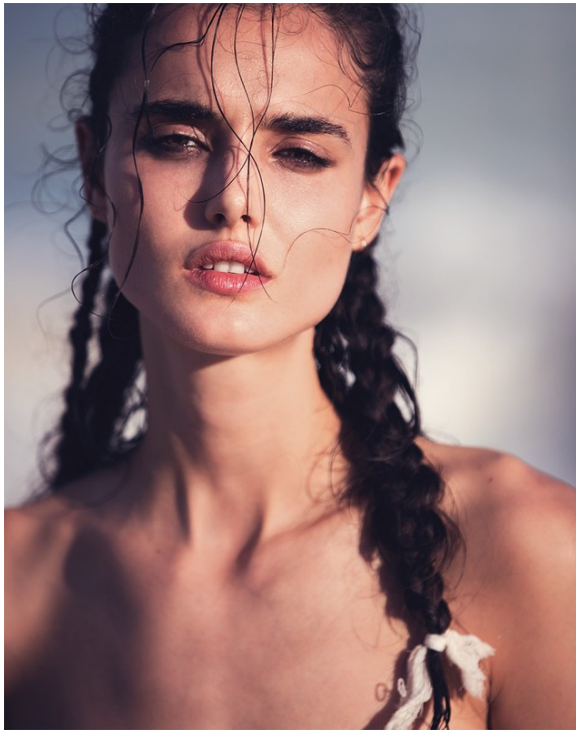


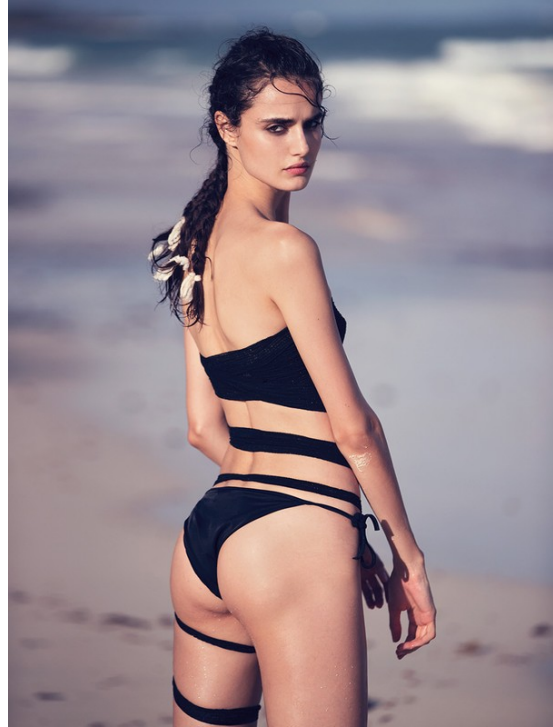
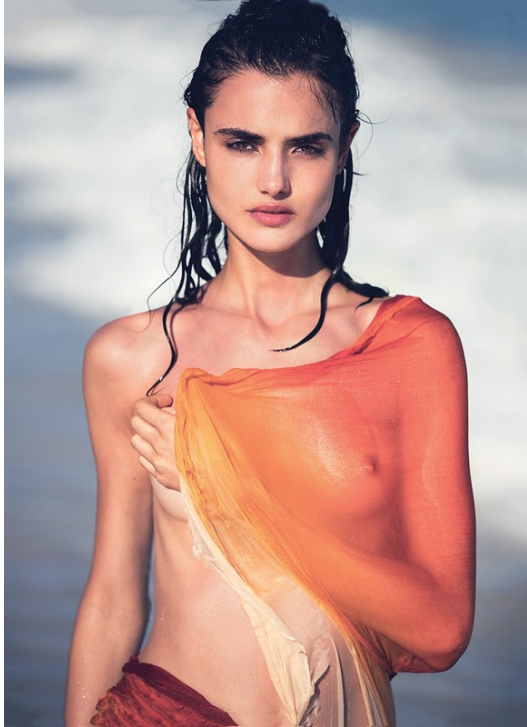
Art Department



David Bellemere

www.art-dept.com

Art Department



David Bellemere

www.art-dept.com

Art Department



INOCENCIA PERPETUA

Slip Dress y pendientes Coco Crush, todo de Chanel; colgante La Strada; collar Happy Diamonds, todo de Chopard.

¿por siempre joven?

La juventud y la belleza se han enlazado desde tiempos hiperbóreos, pero sin desvanecer el ingrediente principal de su esencia: una sorpresa inesperada

Fotografía David Bellemere
Realización Anna Katsanis



REVELACIÓN ABSOLUTA

Sweater de La Perla, pendientes de Tiffany T. En página opuesta: vestido de Dior. En esta reportaje: PENNADO, Gianluca Mandelli para Atelier Management; MAQUILLAJE, Joseph Carrillo para Kate Ryan; MANICURA, Caralaine Holland para IMC Worldwide; postproducción, Matthew Cylinder; PRODUCCIÓN, Marcos Feuchling; ASISTENTE DE BODA, Jaclyn Mastropasqua; AGENTE DE FOTOGRAFÍA, Carol; PRODUCTOR DE FOTOGRAFÍA, Amadine; ASISTENTES DE FOTOGRAFÍA, Zack Forryth, Sebastian Beckman; ASISTENTE DE PRODUCCIÓN, Jeff Thomas; AGENTE DE BALENOS, Nico Mai; AGENTE DE PENNADO, Darré; AGENTE DE MAQUILLAJE, Leigh Sikorski; AGENTE DE MANICURA, Luke Milroy; MODELO, Valery Kaufman/The Society Management.

David Bellemere

www.art-dept.com

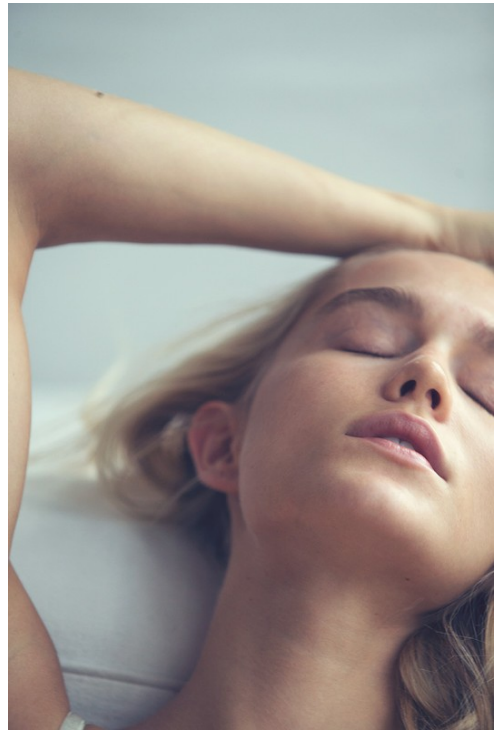
Art Department



David Bellemere

www.art-dept.com

Art Department



David Bellemere

www.art-dept.com

Art Department



David Bellemere

www.art-dept.com

Art Department



David Bellemere

www.art-dept.com

Art Department



Limelight Survey Side
of Life 生活平穩
10K 白金耳環
鑲嵌 0.5 克拉鑽石
及 兩 條 18K 白金鍊
鑲 兩 顆 0.5 克拉
鑽石 鑲 嵌 手 鐲
all by PIAGET

Vogue Luxury

editor chat hsu

runic charm

庇護甲冑

寶石，在最小的晶體裡潛藏了最大的庇佑力量，是古時戰士征戰沙場的幸運護符，亦是今時女子時尚對戰的自信鎧甲。

photographed by David Bellemere @ Artyphare Paris; jewelry editor Chat Hsu styled by Céline Bourreasse; makeup Tetsu Yamashiki; hair Cyril Labrousse; music Alex Sieling @ Metropolitan Agency Paris; special thanks to La Strada sp. Paris

David Bellemere

www.art-dept.com

Art Department



David Bellemere

www.art-dept.com

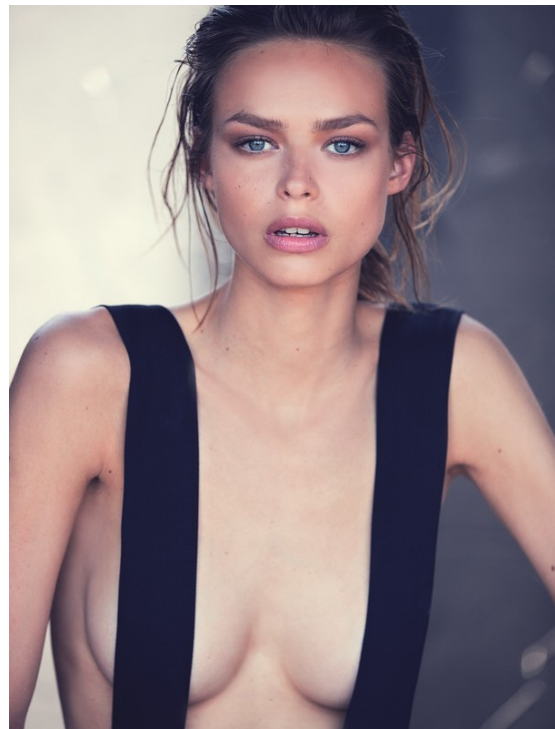
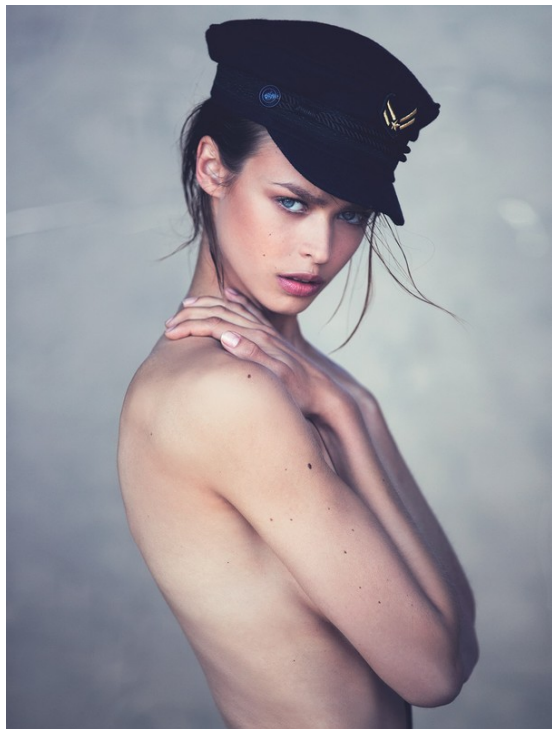
Art Department



David Bellemere

www.art-dept.com

Art Department



David Bellemere

www.art-dept.com

Art Department



David Bellemere

www.art-dept.com

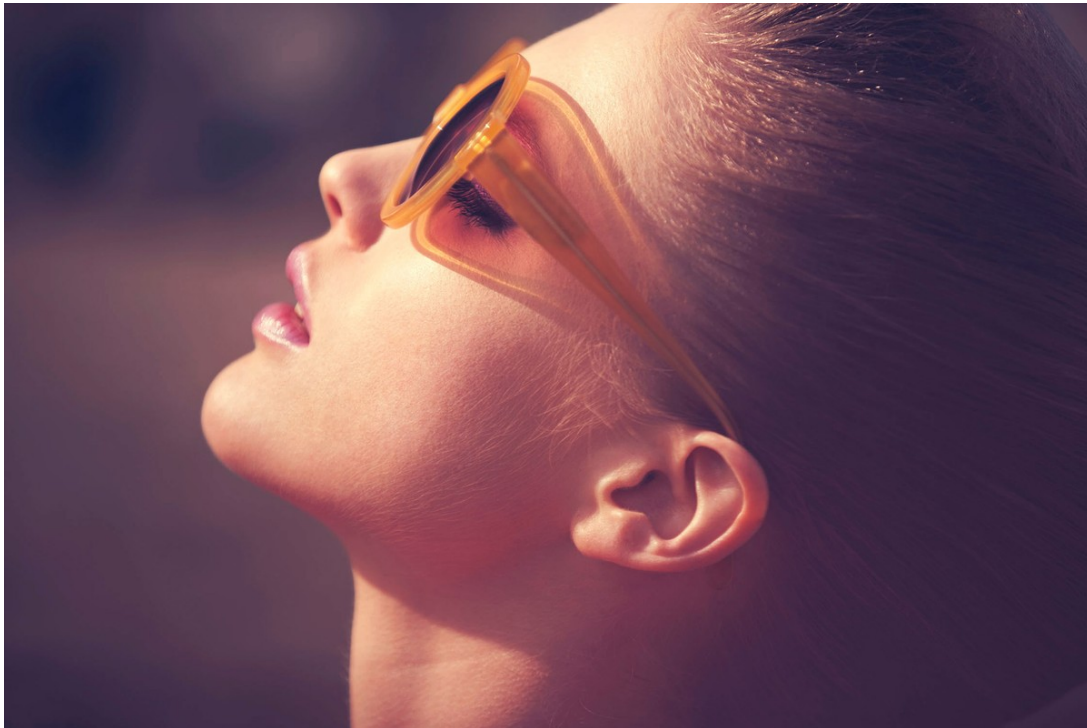
Art Department



David Bellemere

www.art-dept.com

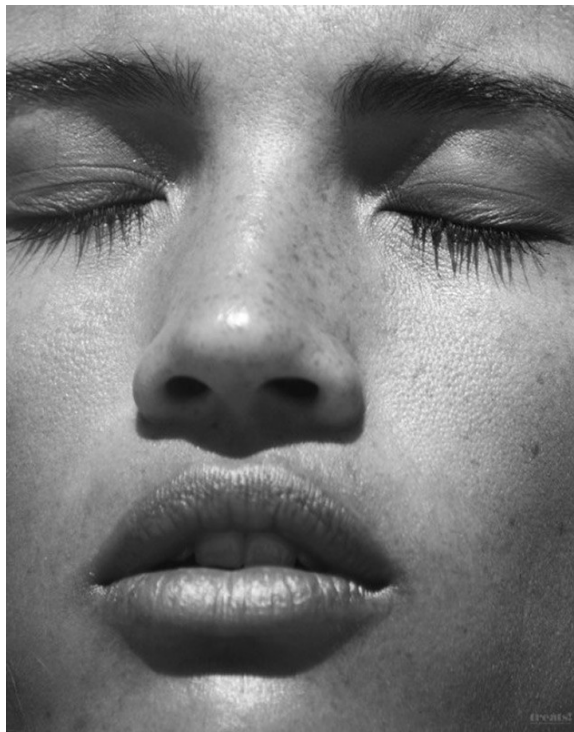
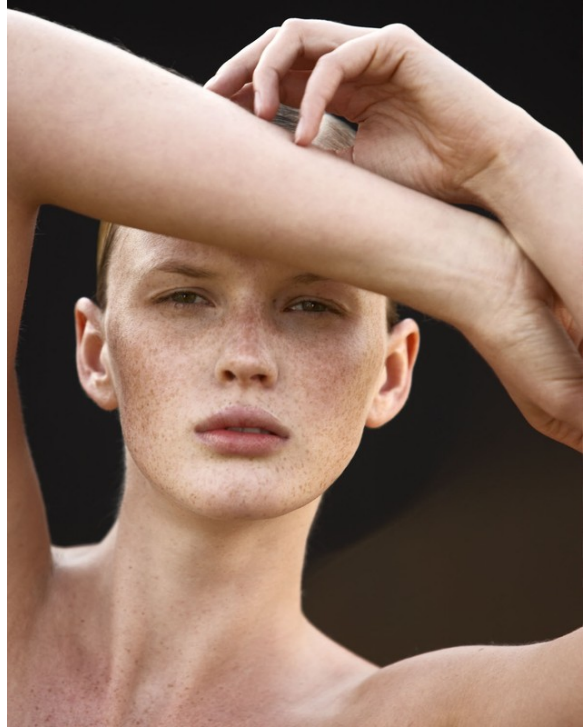
Art Department



David Bellemere

www.art-dept.com

Art Department



David Bellemere

www.art-dept.com

Art Department



David Bellemere

www.art-dept.com

Art Department



David Bellemere

www.art-dept.com

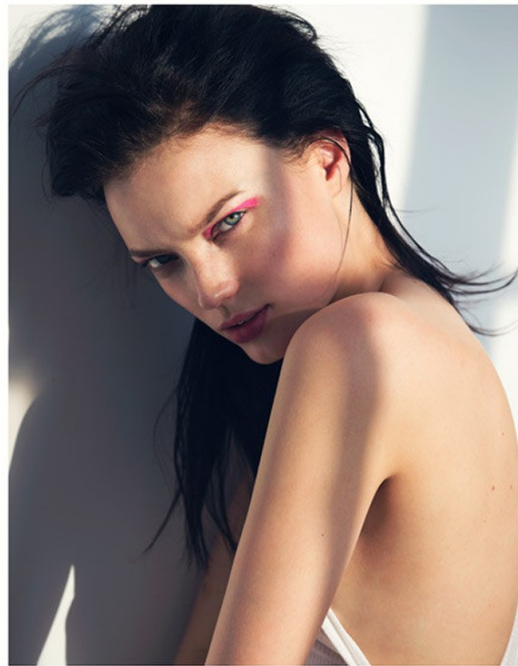
Art Department



David Bellemere

www.art-dept.com

Art Department



David Bellemere

www.art-dept.com

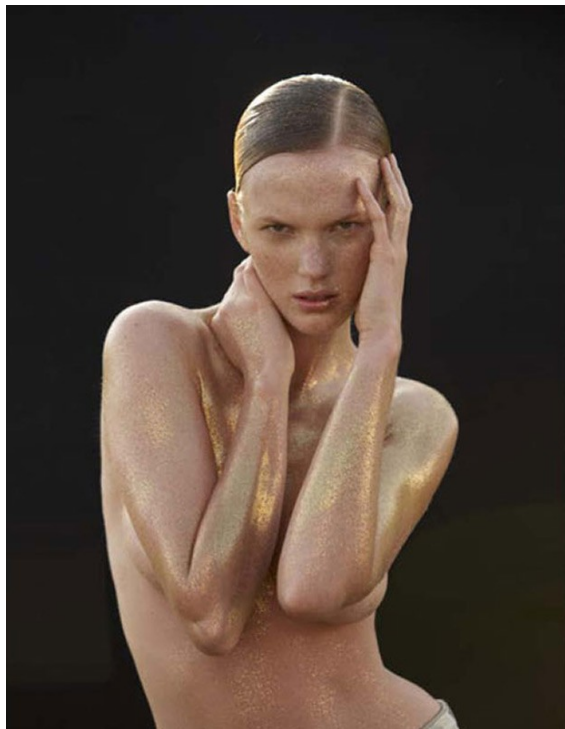
Art Department



David Bellemere

www.art-dept.com

Art Department



David Bellemere

www.art-dept.com

Art Department



David Bellemere

www.art-dept.com

Art Department



David Bellemere

www.art-dept.com

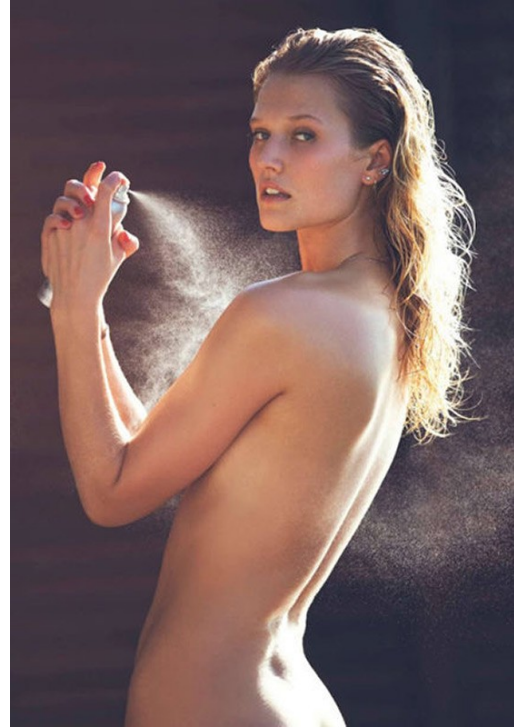
Art Department



David Bellemere

www.art-dept.com

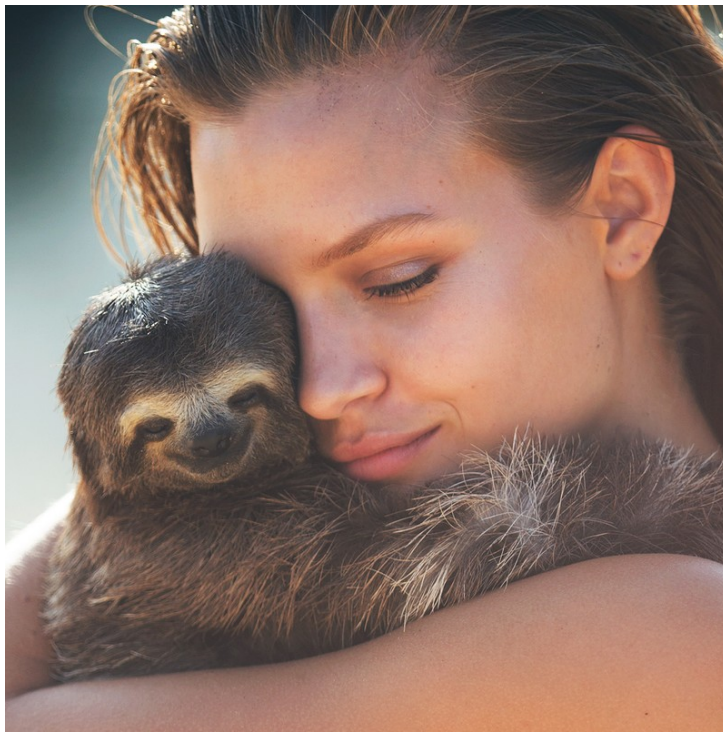
Art Department



David Bellemere

www.art-dept.com

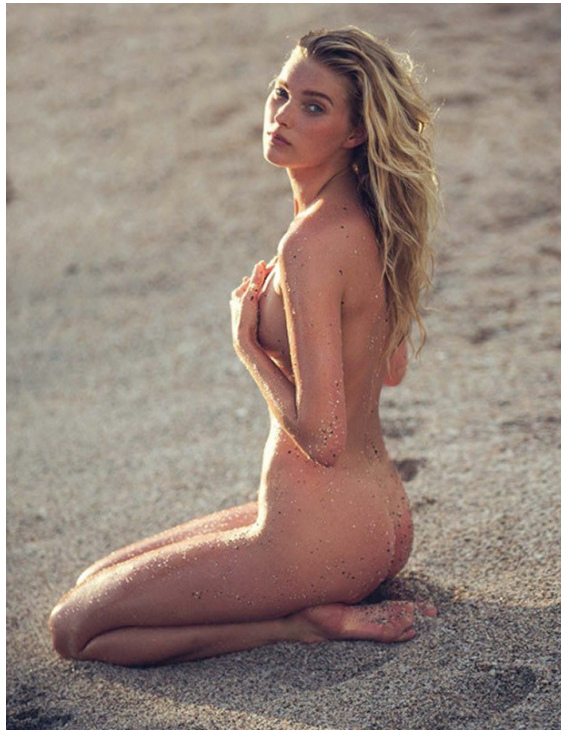
Art Department



David Bellemere

www.art-dept.com

Art Department



David Bellemere

www.art-dept.com

Art Department



David Bellemere

www.art-dept.com

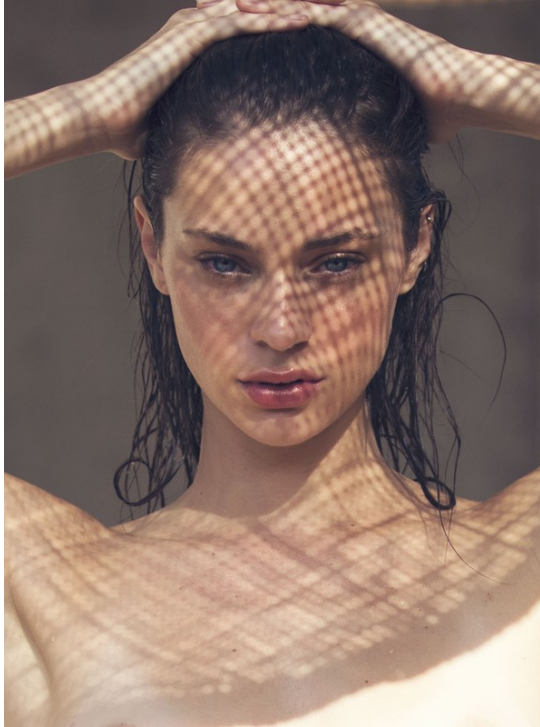
Art Department



David Bellemere

www.art-dept.com

Art Department



David Bellemere

www.art-dept.com

Art Department



David Bellemere

Art Department



David Bellemere

www.art-dept.com

Art Department



talent Georgia May Jagger © TESS Management; fashion assistants: Shona Lee, Anahita, Shafiq and Parissa Staffin; make up: Megumi Itano; hair: Maxime Marc; photographer assistant: Kadir Demirci; agent: Carole Duranne © Artisphere; production: Amalia © Artisphere



David Bellemere

www.art-dept.com

Art Department



David Bellemere

www.art-dept.com

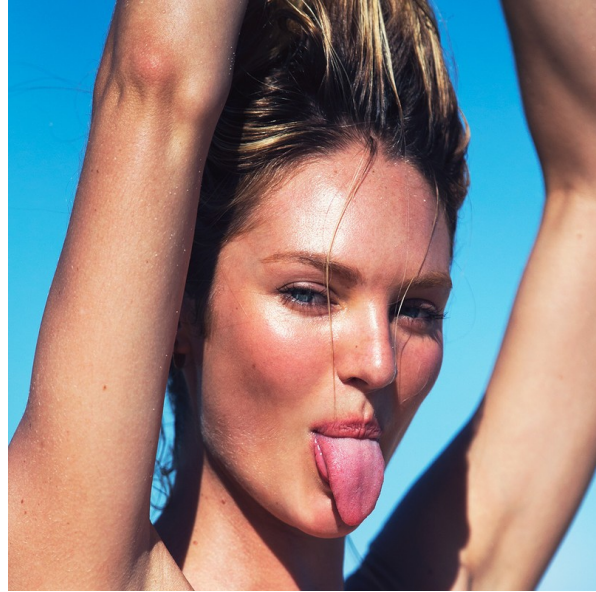
Art Department



David Bellemere

www.art-dept.com

Art Department



David Bellemere

www.art-dept.com