

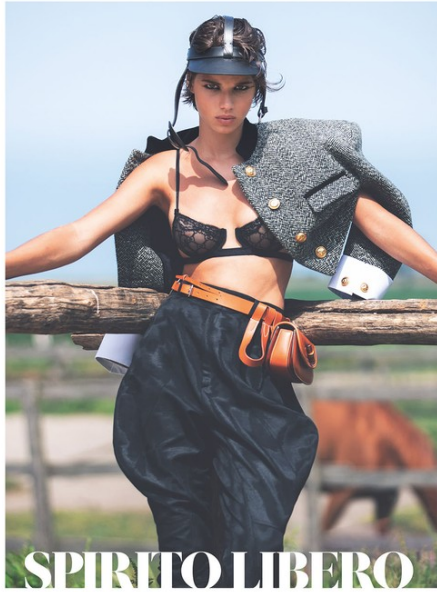
Art Department



David Bellemere

www.art-dept.com

Art Department



David Bellemere

www.art-dept.com

Art Department



David Bellemere

www.art-dept.com

Art Department



David Bellemere

www.art-dept.com

Art Department



David Bellemere

www.art-dept.com

Art Department



David Bellemere

www.art-dept.com

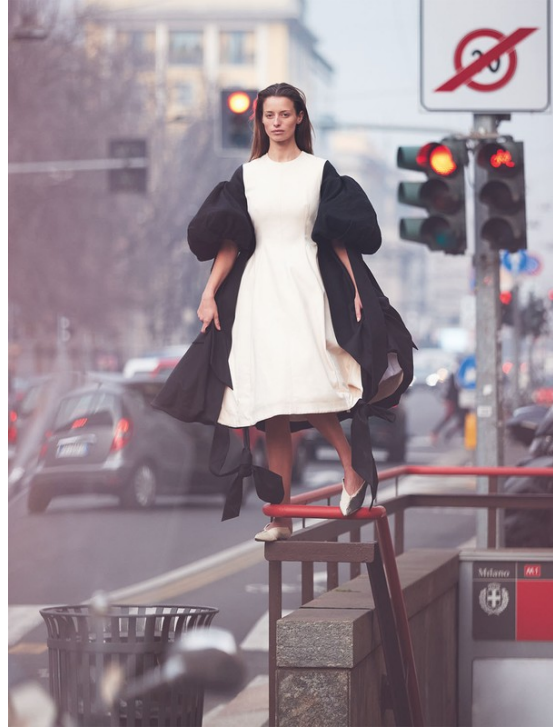
Art Department



David Bellemere

www.art-dept.com

Art Department



David Bellemere

www.art-dept.com

Art Department



David Bellemere

www.art-dept.com

Art Department



David Bellemere

www.art-dept.com

Art Department



David Bellemere

www.art-dept.com

Art Department



David Bellemere

www.art-dept.com

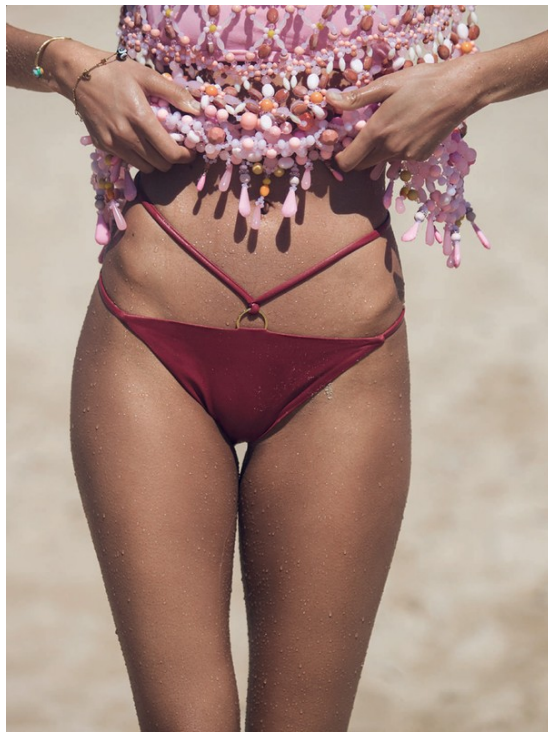
Art Department



David Bellemere

www.art-dept.com

Art Department



David Bellemere

www.art-dept.com

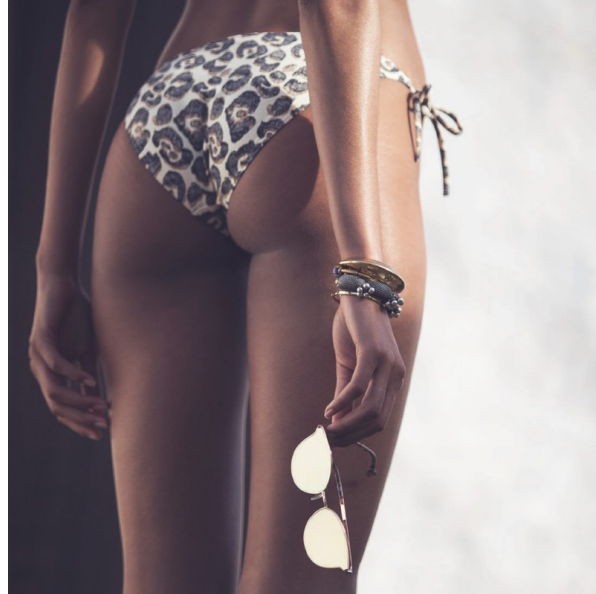
Art Department



David Bellemere

www.art-dept.com

Art Department



David Bellemere

www.art-dept.com

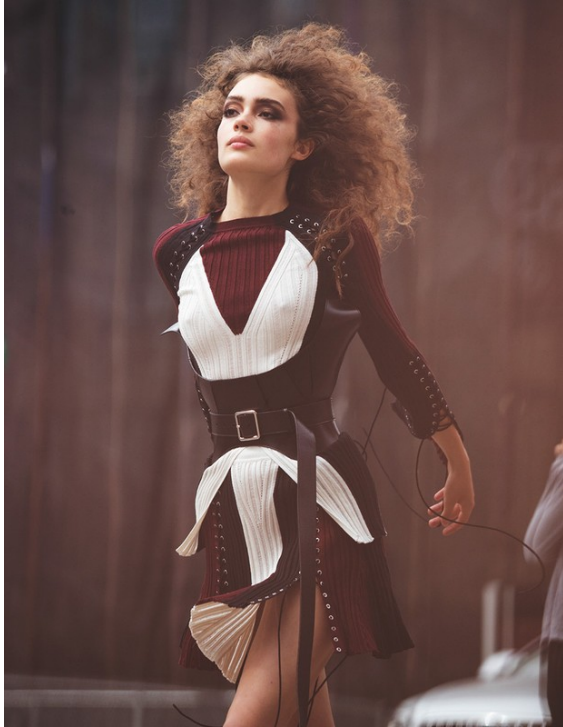
Art Department



David Bellemere

www.art-dept.com

Art Department



David Bellemere

www.art-dept.com

Art Department



David Bellemere

www.art-dept.com

Art Department



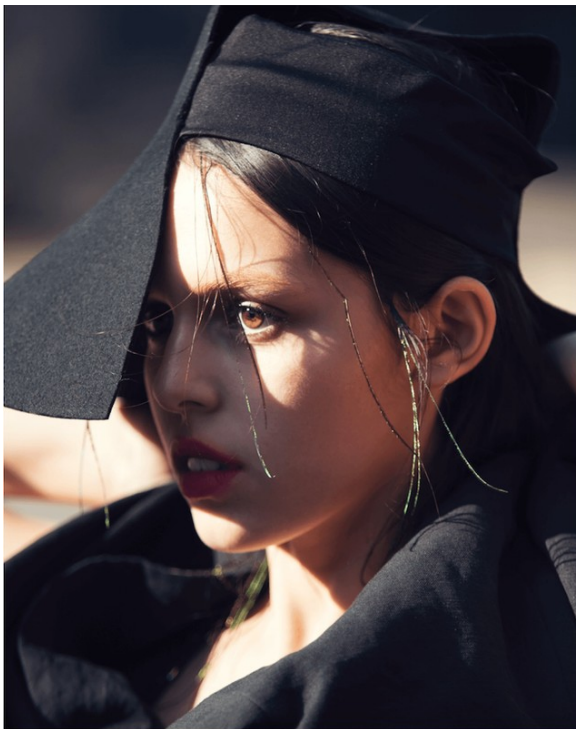
FULLS



Left: Black and white striped suit, white blouse, and black tie all by SUVAM.

Above: Black cape, mesh leggings, and leather boots all by JUNYA WATANABE COMME DES GARÇONS.

443



Black hat and coat by YOHJI YAMAMOTO.

David Bellemere

www.art-dept.com

Art Department



Black pleated suit and blue oxford all by FUCTASSI.



FULLS

433



Black knit, silk & tulle and leather from 2014 YOHJI YAMAMOTO.



Bebe: Black coat, red and black print dress, leather boots all by YOHJI YAMAMOTO.

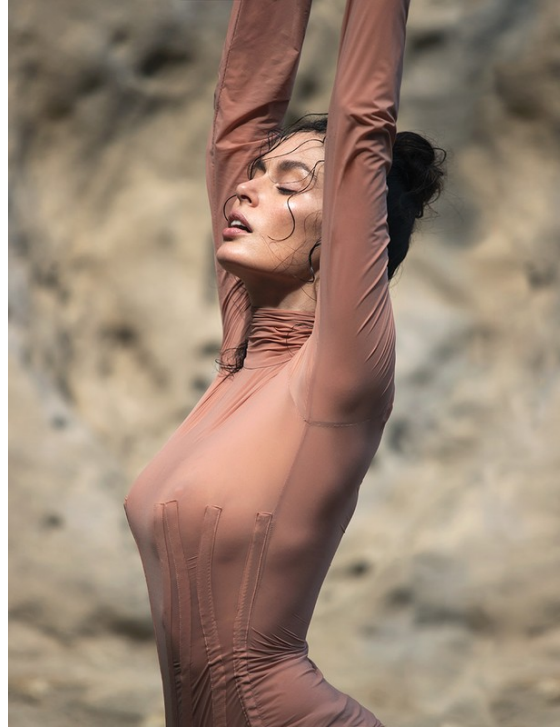
FULLS

451

David Bellemere

www.art-dept.com

Art Department



David Bellemere

www.art-dept.com

Art Department



David Bellemere

www.art-dept.com

Art Department



David Bellemere

www.art-dept.com

Art Department



David Bellemere

www.art-dept.com

Art Department



David Bellemere

www.art-dept.com

Art Department



David Bellemere

www.art-dept.com

Art Department



David Bellemere

www.art-dept.com

Art Department



David Bellemere

www.art-dept.com

Art Department



David Bellemere

www.art-dept.com

Art Department



David Bellemere

www.art-dept.com

Art Department



David Bellemere

www.art-dept.com

Art Department



David Bellemere

www.art-dept.com

Art Department



В Д В И Ж Е Н И И

ЯРКИЕ КУРТКИ,
КОРОТКИЕ ТОПЫ,
АСИММЕТРИЧНЫЕ КУПАЛЬНИКИ
И ВЫСОКИЕ КРОССОВКИ
ТРЕБУЮТ СПОРТИВНОЙ ФИГУРЫ
И БОДРОГО НАСТРОЕНИЯ.
НА СТАРТ, ВНИМАНИЕ, МАРШ!

Фото DAVID BELLEMERE
Стиль KATERINA ZOLOTOTRUBOVA

ВЫШЕ ВПЛОТНУ И ПО
ВИДЕРСКИИ В ПЛОТНУ,
И СЕ ПЛЕШЕВЕРСАКО,
ТОПИК УЛОЖКА С АТАС
ТАКОС, ТОПИК И ТАКОС,
БОСОНОЖИ И ТАКОС
ТАКОС И ТАКОС
FERRAGAMO

A woman with curly hair, wearing a bright yellow raincoat over a striped crop top and yellow sneakers. She is posing against a dark metal fence, holding a yellow pole. The background is a blurred outdoor setting.

David Bellemere

www.art-dept.com

Art Department



БОДИ ИЗ ВЯЗКОМЫХ
EMILIO PUCCO
 БОСНОЖИКИ ИЗ ТИТУЛ
 СОВЬИ С ЗИСТАНАТО
SALVATORE FERRAGAMO
 На стропиле: сарафан
 КУПЛА ПУНСИ, **BURBERRY**
 БРЮКИ ИЗ ВЯЗКОМЫХ
VERSACE РЕЗИНОВЫЕ
 САБАДАМИ, **PRADA**



ТРЮКИ, **MAX MARA**
 БРЮКИ ИЗ НЕЙЛОНА
 И КОЖИ, **VERSACE**
 На стропиле: сарафан
NYRTHA ВЪЗ ПРОФИТЕРА,
N.I.M. JEANS, ТРИЧА,
PROFILE BY GOTTIX
 РИПРЕКОВА: **GANLUCA**
MANELLI ИЗОБРАЖ
 МАНИК: **CHRIS COLLECCI**/
ART DEPT МОДЕЛЬ
JULIANA ARKISTON NEXT
 АССИСТЕНТЫ **GOTO PRAK**
SHANE BLAKE, **ALEX CARLOS**,
LUCAS BRON, АССИСТЕНТ
 СТИЛИСТА: **CAMARILLE**
BROWN ПРОДЮСЕРЫ
JOHN MCCORMY MARTIN,
MATTHEW, **MARTEL**, **JAMES**/
MITSUBISHI, **ELENA SEROVA**
RODRIGUEZ, **SEBASTIÃO**
WADA, АССИСТЕНТ
 ПРОДЮСЕРОВ: **EMILY**
PAULO, **BERNARDI** PROSEVA



НЕЙЛОНОВЫЙ КОМБИЗОН,
 БЕЛЫЙ ИЗ ВЯЗКОМЫХ
 ВСЕ **STELLA MCCARTNEY**
 КУПЛА ПУНСИ, **CALEDONIA**
 БОСНОЖИКИ ИЗ КОЖИ
 С ОБЪЕМНЫМИ **FENDI**
 На стропиле: сарафан
 И КОЖИ, МОДЕЛЬ
 ШОПТИ ВСЕ **PRADA**
 НОСИ: **EMILIO CAVALLINI**



David Bellemere

Art Department



David Bellemere

www.art-dept.com

Art Department



David Bellemere

www.art-dept.com

Art Department



David Bellemere

www.art-dept.com

Art Department



David Bellemere

www.art-dept.com

Art Department



David Bellemere

www.art-dept.com

Art Department



David Bellemere

www.art-dept.com

Art Department



David Bellemere

www.art-dept.com

Art Department



David Bellemere

www.art-dept.com

Art Department



David Bellemere

www.art-dept.com

Art Department



David Bellemere

www.art-dept.com

Art Department



David Bellemere

www.art-dept.com

Art Department



David Bellemere

www.art-dept.com

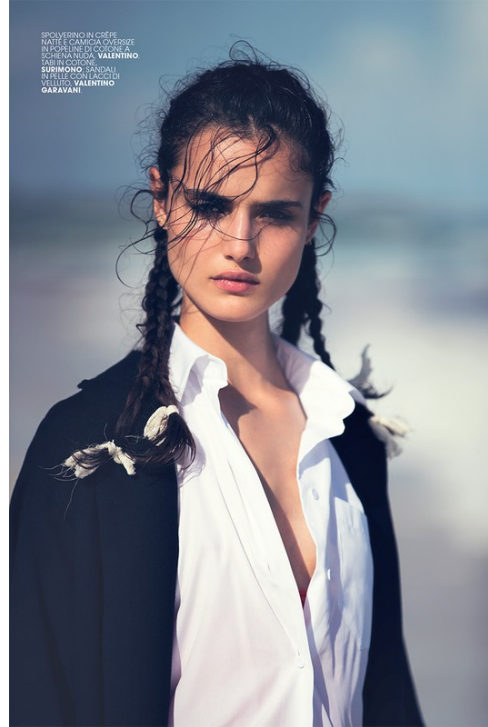
Art Department



David Bellemere

www.art-dept.com

Art Department



David Bellemere

www.art-dept.com

Art Department



David Bellemere

www.art-dept.com

Art Department



David Bellemere

www.art-dept.com

Art Department



David Bellemere

www.art-dept.com

Art Department



David Bellemere

www.art-dept.com

Art Department



David Bellemere

www.art-dept.com

Art Department



David Bellemere

www.art-dept.com

Art Department



David Bellemere

www.art-dept.com

Art Department



David Bellemere

www.art-dept.com

Art Department



David Bellemere

www.art-dept.com

Art Department



David Bellemere

www.art-dept.com

Art Department



David Bellemere

www.art-dept.com

Art Department



David Bellemere

www.art-dept.com

Art Department



David Bellemere

www.art-dept.com

Art Department



David Bellemere

www.art-dept.com

Art Department



David Bellemere

www.art-dept.com

Art Department



David Bellemere

www.art-dept.com

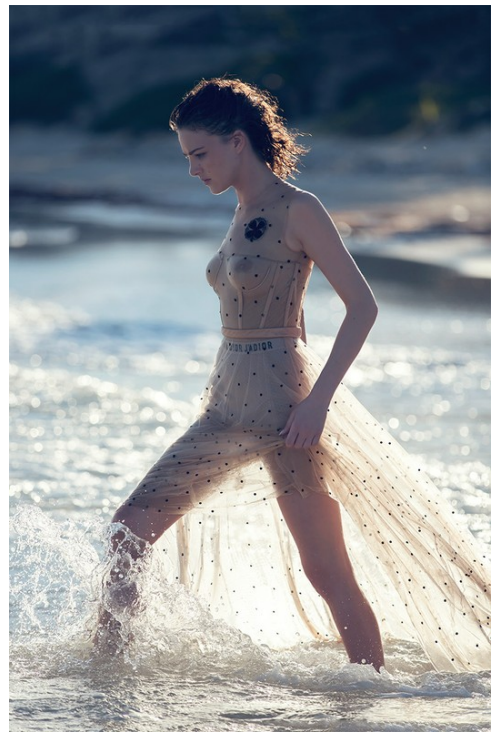
Art Department



David Bellemere

www.art-dept.com

Art Department



David Bellemere

www.art-dept.com

Art Department



David Bellemere

www.art-dept.com

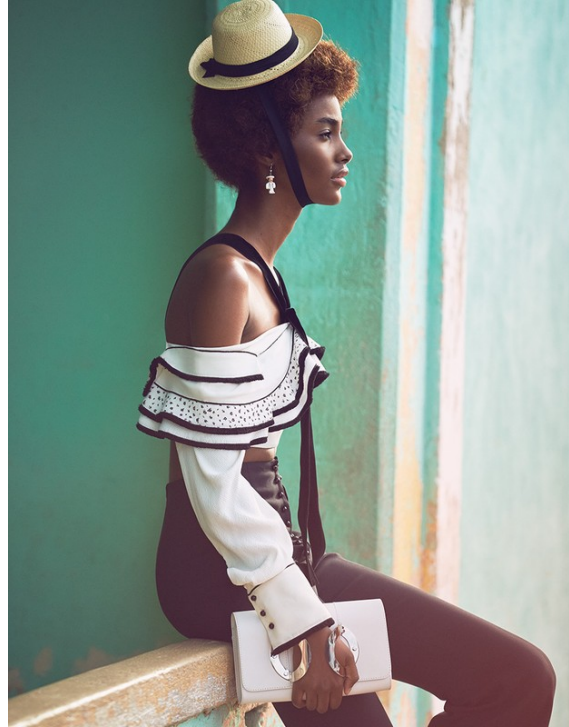
Art Department



David Bellemere

www.art-dept.com

Art Department



David Bellemere

www.art-dept.com

Art Department



David Bellemere

www.art-dept.com

Art Department



David Bellemere

www.art-dept.com

Art Department



David Bellemere

www.art-dept.com

Art Department



David Bellemere

www.art-dept.com

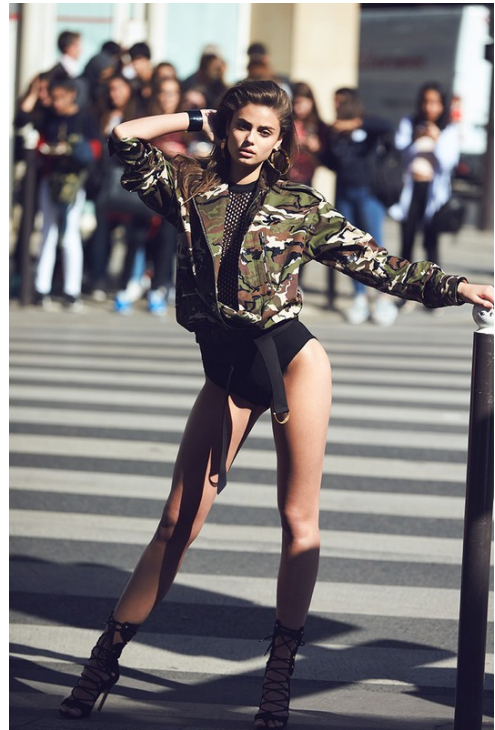
Art Department



David Bellemere

www.art-dept.com

Art Department



David Bellemere

www.art-dept.com

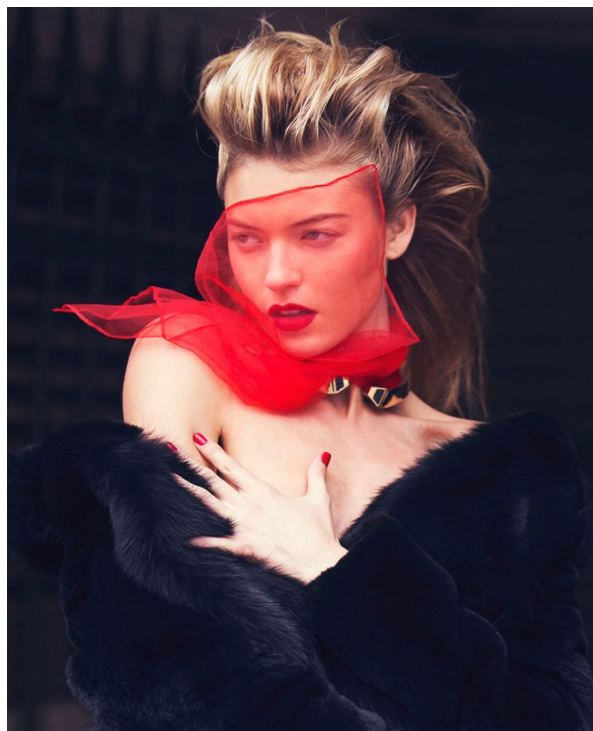
Art Department



David Bellemere

www.art-dept.com

Art Department



David Bellemere

www.art-dept.com

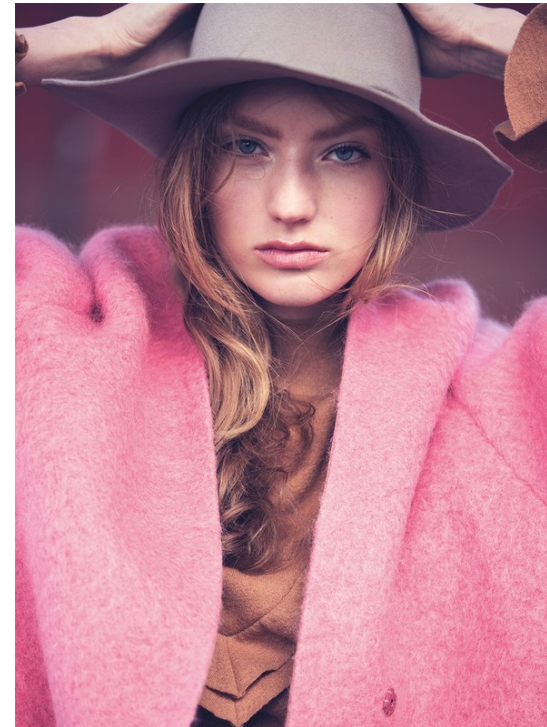
Art Department



David Bellemere

www.art-dept.com

Art Department



David Bellemere

www.art-dept.com

Art Department



David Bellemere

www.art-dept.com

Art Department



TRENCH DOPPIOPETTO IN
GIARDINIERE DI COCCONE
E LASCIO IN LORO E
SELA VALENTINO NELLA
PAGLIA ACCAVIATI BIANCHI
COTONE IN LANA
DRESSATA EFFETTO
ASTROLOGO
CORSESE IN LANA
KRIZIA GIOIA PIESTA
FORTE FORTE
SNEAKERS CONVERSE



CAPPOTTO IN ALPACA
CON CINTURA MAGLIA IN
CASHMERE E ALPACA
NELLA ANGE GIOIA IN
SELA TUTTO FORTE FORTE
NELLA PINGUA ACCAVIATI
BLAZER IN COTONE
GIORGIO ARMANI PULL
DOLCE & GABBANA
LANA I CASHMERE A
CORSE EGIPTO ARMANI
OCCHIAI WEB E WEAR
SNEAKERS CONVERSE

SERVIZIO ELISABETTA
MASSARI HA
COLLAZIO HELGA
LANE TOLDO
BENEFICIO
REINVENTO
CHARLOTTE HILSON
SARAH JANE PARDON
KATE RYAN INC USING
SHARLE AND BEARBE
CASTING COVER RESS
PER CLOUTIER



David Bellemere

Art Department



David Bellemere

www.art-dept.com

Art Department



David Bellemere

www.art-dept.com

Art Department



David Bellemere

www.art-dept.com

Art Department



David Bellemere

www.art-dept.com

Art Department



David Bellemere

www.art-dept.com

Art Department



David Bellemere

www.art-dept.com

Art Department



David Bellemere

www.art-dept.com

Art Department



David Bellemere

www.art-dept.com

Art Department



David Bellemere

www.art-dept.com

Art Department



David Bellemere

www.art-dept.com

Art Department



David Bellemere

www.art-dept.com

Art Department



David Bellemere

www.art-dept.com

Art Department



David Bellemere

www.art-dept.com

Art Department



David Bellemere

www.art-dept.com

Art Department



David Bellemere

www.art-dept.com

Art Department



David Bellemere

www.art-dept.com