

Art Department



James White

www.art-dept.com

Art Department



James White

www.art-dept.com

Art Department



James White

www.art-dept.com

Art Department



James White

www.art-dept.com

Art Department



James White

www.art-dept.com

Art Department



James White

www.art-dept.com

Art Department



INTIMATES

HEATHER KEMESKY

The California child and Louis Vuitton favourite.

PHOTOGRAPHY Nick Hudson FASHION Diana Lust WORDS Andrea Tibaroni



James White

www.art-dept.com

Art Department



James White

www.art-dept.com

Art Department



James White

www.art-dept.com

Art Department



James White

www.art-dept.com

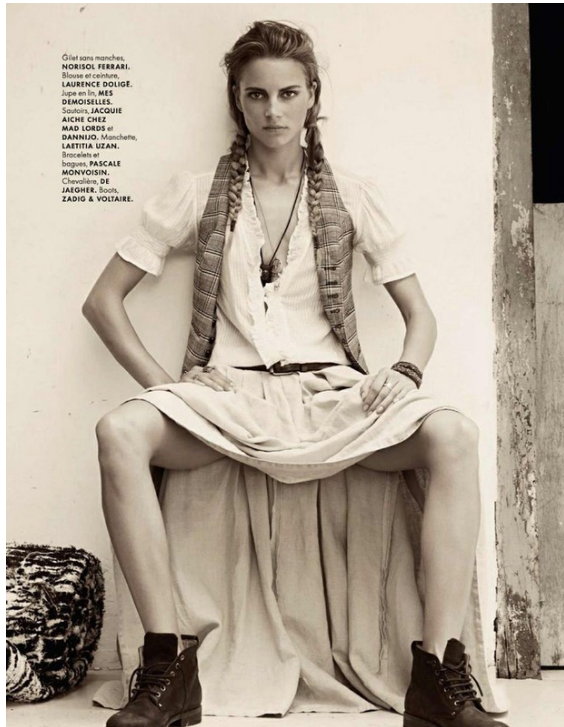
Art Department



James White

www.art-dept.com

Art Department



James White

www.art-dept.com

Art Department



James White

www.art-dept.com

Art Department



James White

www.art-dept.com

Art Department



James White

www.art-dept.com

Art Department



Robe à manches courtes en
cady de soie noir, boutons dorés
en cuir assorti assorti assorti.
Paire de gants en cuir assorti.
Ensemble chaussures assorties en cuir
et perforées en noir.



James White

www.art-dept.com

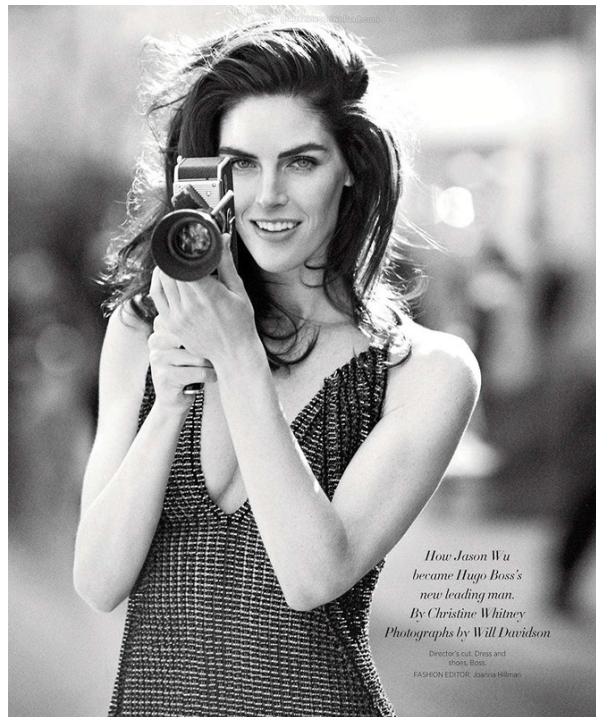
Art Department



James White

www.art-dept.com

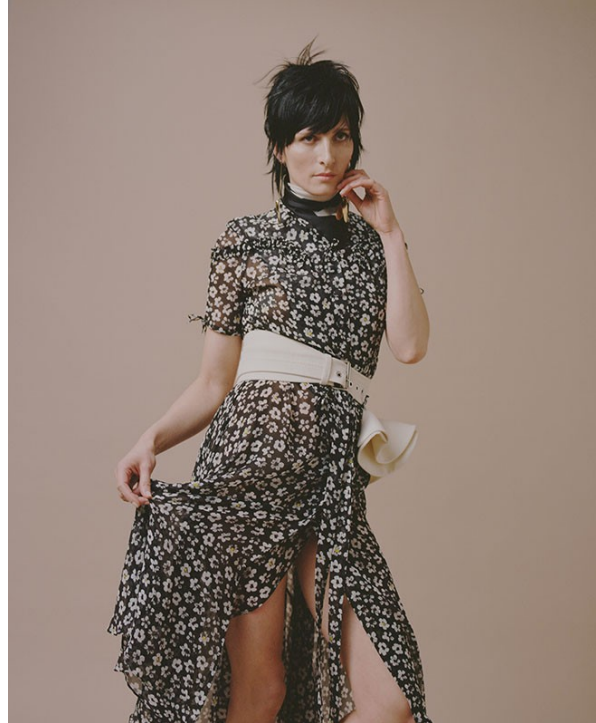
Art Department



James White

www.art-dept.com

Art Department



James White

www.art-dept.com

Art Department



James White

www.art-dept.com

Art Department



James White

www.art-dept.com

Art Department



Light of the Day

photography
Amy Troost

fashion
Delphine Danhier



James White

www.art-dept.com

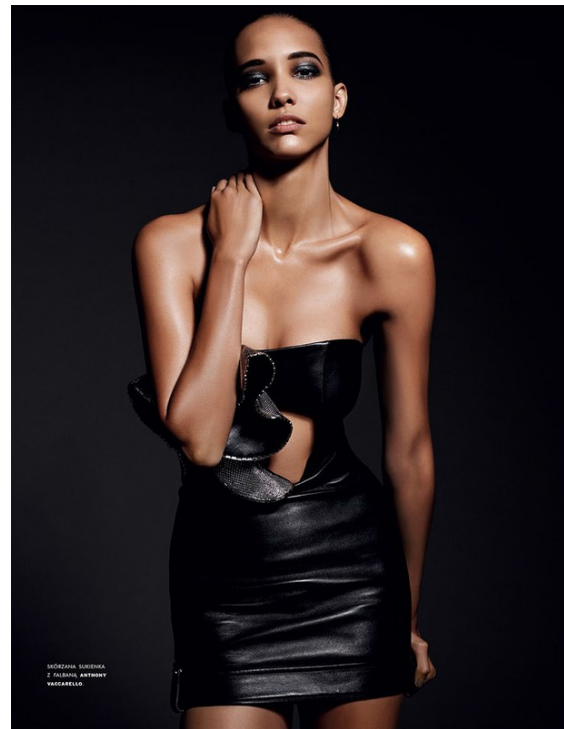
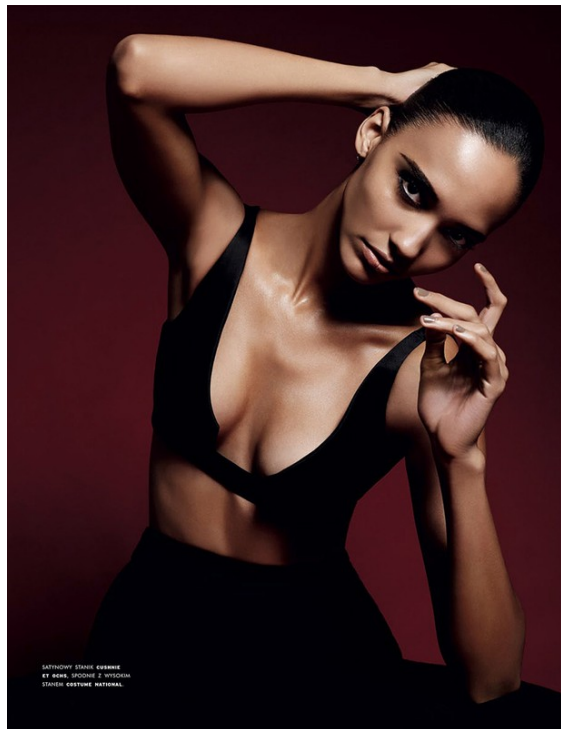
Art Department



James White

www.art-dept.com

Art Department



James White

www.art-dept.com

Art Department



James White

www.art-dept.com

Art Department



126



127



James White

www.art-dept.com

Art Department



James White

www.art-dept.com

Art Department



James White

www.art-dept.com

Art Department



James White

www.art-dept.com

Art Department



James White

www.art-dept.com

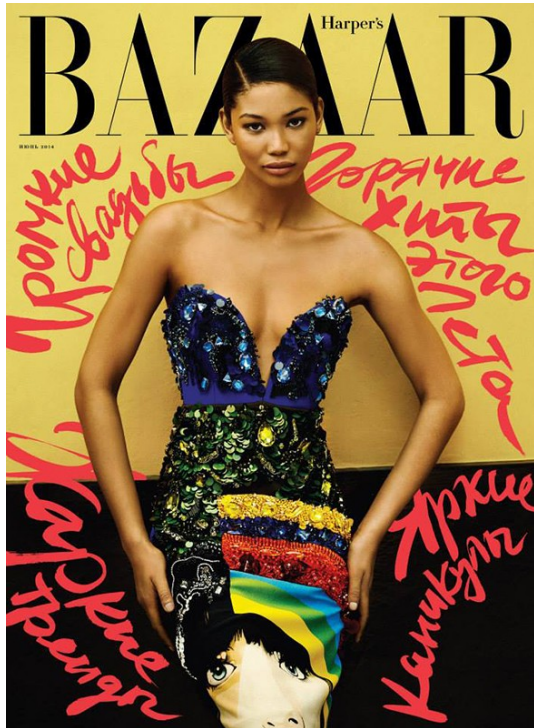
Art Department



James White

www.art-dept.com

Art Department



James White

www.art-dept.com

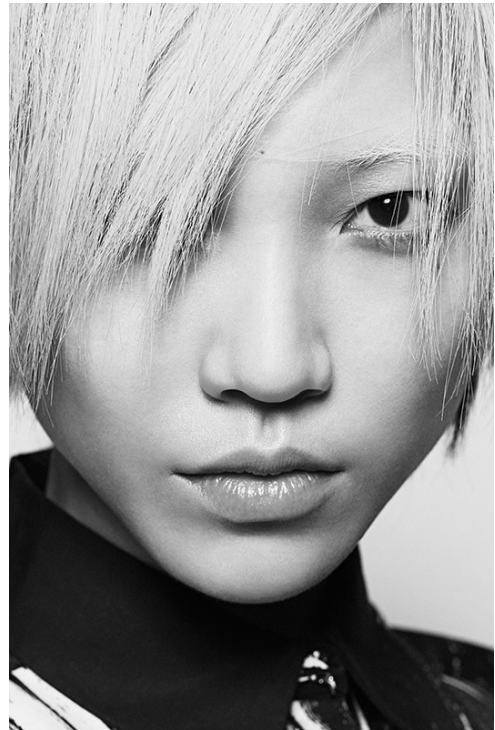
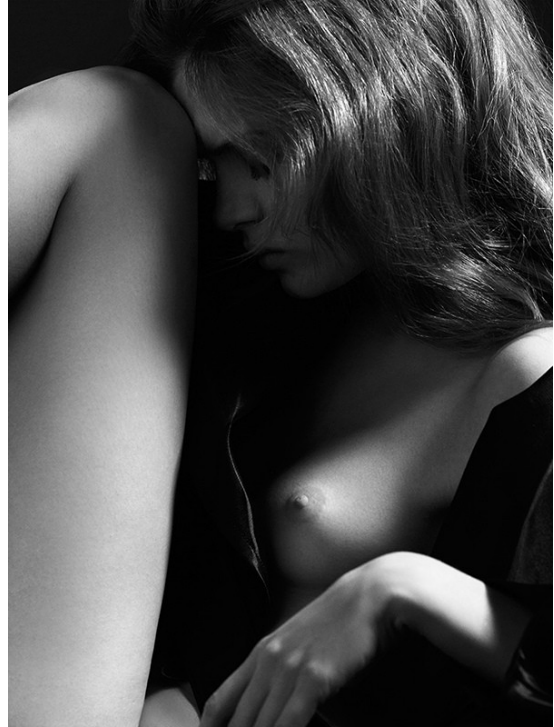
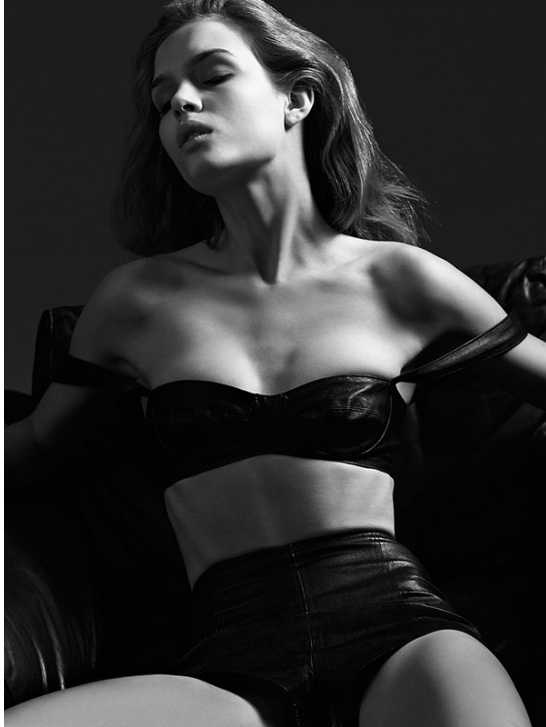
Art Department



James White

www.art-dept.com

Art Department



James White

www.art-dept.com

Art Department



James White

www.art-dept.com

Art Department



James White

www.art-dept.com

Art Department

CAPAS DE LANA. CON
FRÍO
CUELLOS DE TORTUGA
Y CUELLOS TEXTURAS
EN EL BOSQUE.

Fotografías de Hans Neumann
Producción Harper's Bazaar en Español



Coordinación
de moda: Catherine
Neech-Hanson.
Sutler y taller
oversize,
Stella McCartney.



James White

www.art-dept.com

Art Department



James White

www.art-dept.com

Art Department



James White

www.art-dept.com

Art Department



James White

www.art-dept.com

Art Department



James White

www.art-dept.com

Art Department



James White

www.art-dept.com

Art Department



James White

www.art-dept.com

Art Department



James White

www.art-dept.com

Art Department



James White

www.art-dept.com

Art Department



James White

www.art-dept.com

Art Department



James White

www.art-dept.com

Art Department



James White

www.art-dept.com