

# Art Department



James White

[www.art-dept.com](http://www.art-dept.com)

# Art Department



James White

[www.art-dept.com](http://www.art-dept.com)



# Art Department



James White

[www.art-dept.com](http://www.art-dept.com)

# Art Department



James White

[www.art-dept.com](http://www.art-dept.com)



# Art Department



James White

[www.art-dept.com](http://www.art-dept.com)

# Art Department



James White

[www.art-dept.com](http://www.art-dept.com)



# Art Department



James White

[www.art-dept.com](http://www.art-dept.com)

# Art Department



James White

[www.art-dept.com](http://www.art-dept.com)



# Art Department



James White

[www.art-dept.com](http://www.art-dept.com)

# Art Department



James White

[www.art-dept.com](http://www.art-dept.com)



# Art Department



James White

[www.art-dept.com](http://www.art-dept.com)

# Art Department



James White

[www.art-dept.com](http://www.art-dept.com)



# Art Department



James White

[www.art-dept.com](http://www.art-dept.com)

# Art Department



James White

[www.art-dept.com](http://www.art-dept.com)



# Art Department



James White

[www.art-dept.com](http://www.art-dept.com)



# Art Department



James White

www.art-dept.com



# Art Department



WWD INFOCUS: SWIM PREVIEW

Tommy Bahama's nylon and spandex maillot with Tommy Hilfiger's cotton and acrylic cardigan. Earrings by Cara Croninger; shoes by Brian Atwood.

## James White

[www.art-dept.com](http://www.art-dept.com)



# Art Department



WWD-INFOCUS: SWIM PREVIEW

WWD

Tavik's nylon and  
spandex one-piece  
with Maison de  
Papillon's silk robe.  
Earrings by Momi;  
necklace by Vionnet;  
shoes by Valentino.

MODEL: ANAIS AT THE SOCIETY  
PHOTO ASSISTANTS: JAMES SAKALIAN  
3RD AND DAVE SWEENEY  
DIGITAL TECH: JASON "DIGGY" WANG  
HAIR: NICOLAS ELDIN AT ART  
DEPARTMENT USING ORIBE  
MAKEUP: FUMIYUKI NAKAGAWA FOR  
SHISEIDO @ THE WALL GROUP  
MANICURIST: ADA YELUNG  
SET DESIGNER: JENNA LEVINE  
LOCATION: SILVER SANDS MOTEL

## James White

[www.art-dept.com](http://www.art-dept.com)



# Art Department



James White

[www.art-dept.com](http://www.art-dept.com)



# Art Department



James White

[www.art-dept.com](http://www.art-dept.com)



# Art Department



James White

[www.art-dept.com](http://www.art-dept.com)

# Art Department



James White

[www.art-dept.com](http://www.art-dept.com)



# Art Department



James White

[www.art-dept.com](http://www.art-dept.com)

# Art Department



James White

[www.art-dept.com](http://www.art-dept.com)



# Art Department

INTIMATES

## HEATHER KEMESKY

The California child and Louis Vuitton favourite.

PHOTOGRAPHY Nick Hudson FASHION Dianna Lunt WORDS Andrea Tehacos



LOUIS VUITTON coat and dress, model's own  
jewellery (worn throughout).

## James White

[www.art-dept.com](http://www.art-dept.com)

# Art Department



James White

[www.art-dept.com](http://www.art-dept.com)



# Art Department



James White

[www.art-dept.com](http://www.art-dept.com)

# Art Department



James White

[www.art-dept.com](http://www.art-dept.com)



# Art Department



James White

[www.art-dept.com](http://www.art-dept.com)

# Art Department



James White

[www.art-dept.com](http://www.art-dept.com)



# Art Department



Zlata noel majica i haljina Hugo Boss

James White

[www.art-dept.com](http://www.art-dept.com)

# Art Department



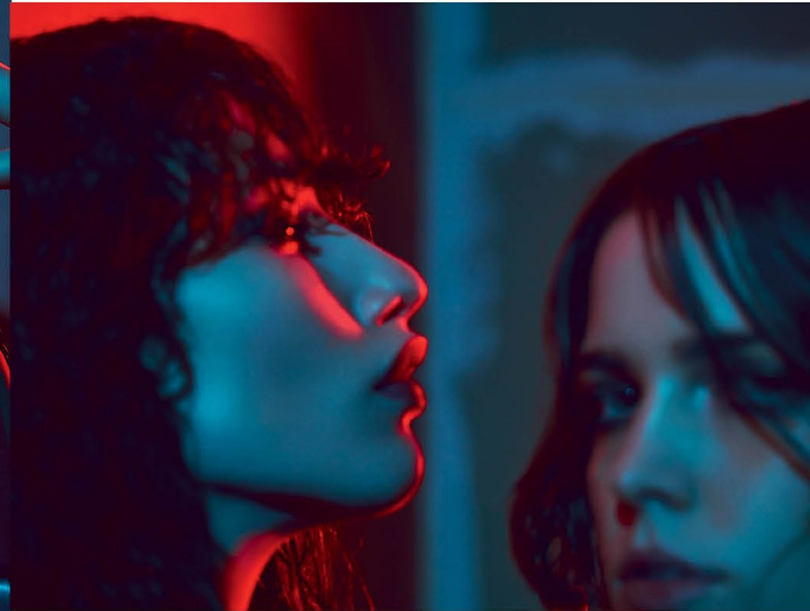
Marina nosi kaput i kralj Jason Wu, torbu preko ramena Marc Jacobs, Maja nosi haljinu na prednjem od poverljive kolekcije i kraljice kolekcije Jason Wu, Zina nosi haljinu bez rukava od prethodne kolekcije Jason Wu, vozačice ogrlice visimetro stiliste

## James White

[www.art-dept.com](http://www.art-dept.com)



# Art Department



James White

[www.art-dept.com](http://www.art-dept.com)

# Art Department



James White

[www.art-dept.com](http://www.art-dept.com)



# Art Department



James White

[www.art-dept.com](http://www.art-dept.com)

# Art Department



James White

[www.art-dept.com](http://www.art-dept.com)



# Art Department



James White

[www.art-dept.com](http://www.art-dept.com)

# Art Department



James White

[www.art-dept.com](http://www.art-dept.com)



# Art Department



James White

[www.art-dept.com](http://www.art-dept.com)



# Art Department



James White

[www.art-dept.com](http://www.art-dept.com)



# Art Department



James White

[www.art-dept.com](http://www.art-dept.com)

# Art Department



## James White

[www.art-dept.com](http://www.art-dept.com)



# Art Department



James White

[www.art-dept.com](http://www.art-dept.com)



# Art Department



James White

[www.art-dept.com](http://www.art-dept.com)



# Art Department



James White

[www.art-dept.com](http://www.art-dept.com)



# Art Department



James White

[www.art-dept.com](http://www.art-dept.com)



# Art Department



James White

[www.art-dept.com](http://www.art-dept.com)

# Art Department



**S**  
**MO**

**CRISTA COBER**  
*La "top" más camaleónica del momento viene de Canadá.*

**corto (o largo)**

Especial Cabello, en mayúsculas. Con P de peluquero, C de corte y T de trenzas  
*Personas discapacitadas que también cambian estereotipos en la moda*  
Shopping: darle la vuelta al clásico marinero

Y ADEMÁS — Rebel Wilson, la nueva hornada de magos españoles, terrazas que estrenan buen tiempo...

James White

[www.art-dept.com](http://www.art-dept.com)



# Art Department



James White

[www.art-dept.com](http://www.art-dept.com)

# Art Department



James White

[www.art-dept.com](http://www.art-dept.com)



# Art Department



James White

[www.art-dept.com](http://www.art-dept.com)

# Art Department



James White

[www.art-dept.com](http://www.art-dept.com)



# Art Department



James White

[www.art-dept.com](http://www.art-dept.com)



# Art Department



James White

[www.art-dept.com](http://www.art-dept.com)



# Art Department

Robe à découpes cage en  
cady de soie FENDI, bottes-sandalet  
en cuir GIUSEPPE ZANOTTI DESIGN.  
Page de gauche: pull imprimé  
en viscose KENZO, pantalon en coton  
et polyester A. KNACKFUSS.



## James White

[www.art-dept.com](http://www.art-dept.com)

# Art Department



James White

[www.art-dept.com](http://www.art-dept.com)



# Art Department



James White

[www.art-dept.com](http://www.art-dept.com)

# Art Department



James White

[www.art-dept.com](http://www.art-dept.com)



# Art Department



James White

[www.art-dept.com](http://www.art-dept.com)







# Art Department



James White

[www.art-dept.com](http://www.art-dept.com)

# Art Department



Well suited. Jacket, pants, and boots, Boss. See Where to Buy for shopping details. Model: Hilary Rhoda; hair: Nicolas Eldin for Oribe; makeup: Justine Purdue for Charlotte Tilbury Beauty; manicure: Michina Koide for Dior Vernis; production: Cindi Blair Productions; prop styling: Todd Wiggins.

#### GET THE LOOK

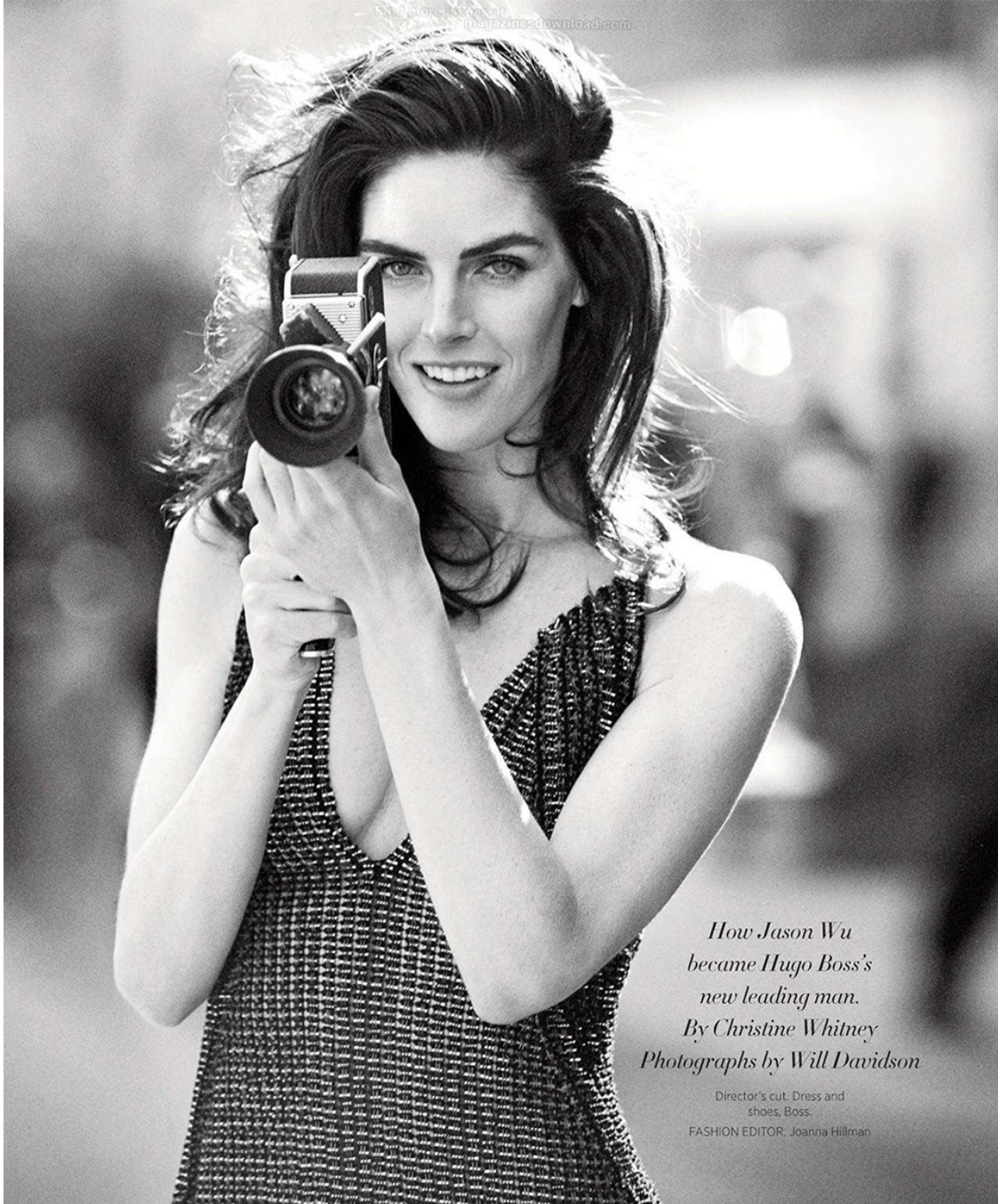
Use Toni & Guy Volume Plumping Mousse for major body (\$14.99). For detailed tips on how to achieve this style, turn to page 195.

## James White

[www.art-dept.com](http://www.art-dept.com)



# Art Department



*How Jason Wu  
became Hugo Boss's  
new leading man.  
By Christine Whitney  
Photographs by Will Davidson*

Director's cut. Dress and  
shoes, Boss.

FASHION EDITOR: Joanna Hillman

## James White

[www.art-dept.com](http://www.art-dept.com)

# Art Department



James White

[www.art-dept.com](http://www.art-dept.com)



# Art Department



James White

[www.art-dept.com](http://www.art-dept.com)

# Art Department



James White

[www.art-dept.com](http://www.art-dept.com)



# Art Department



James White

[www.art-dept.com](http://www.art-dept.com)

# Art Department



James White

[www.art-dept.com](http://www.art-dept.com)



# Art Department



James White

[www.art-dept.com](http://www.art-dept.com)

# Art Department



James White

[www.art-dept.com](http://www.art-dept.com)



# Art Department



James White

[www.art-dept.com](http://www.art-dept.com)

# Art Department



James White

[www.art-dept.com](http://www.art-dept.com)



# Art Department



## Light of the Day

photography  
Amy Troost

fashion  
Delphine Danhier

James White

[www.art-dept.com](http://www.art-dept.com)

# Art Department



James White

[www.art-dept.com](http://www.art-dept.com)



# Art Department



James White

[www.art-dept.com](http://www.art-dept.com)

# Art Department



James White

[www.art-dept.com](http://www.art-dept.com)



# Art Department



James White

[www.art-dept.com](http://www.art-dept.com)

# Art Department



nowyGLAM

Tajemnicza czerń, luksusowe futra, seksowne przezroczystości, zmysłowe drapowania. Moda uczy, jak uwodzić.

ZDJĘCIA\_DARIO\_CATELLANI/ARTLIST  
STYLIZACJA\_VITTORIO\_CERCIELLO

James White

[www.art-dept.com](http://www.art-dept.com)



# Art Department



ASYMETRYCZNA DZIANINOWA  
SUKIENKA ACNE STUDIOS.

NA STRONIE OBOK: WZORZYSTA  
SUKIENKA Z JEDWABIU  
I TIULU UNGARO.  
ZŁOTE KOLCZYKI OSOME

## James White

[www.art-dept.com](http://www.art-dept.com)

# Art Department



James White

[www.art-dept.com](http://www.art-dept.com)



# Art Department



James White

[www.art-dept.com](http://www.art-dept.com)

# Art Department



James White



# Art Department



James White

[www.art-dept.com](http://www.art-dept.com)

# Art Department

*En accord avec le magazine KYRA LEBLANC,  
HERVÉ LÉGER, STYLISTE, CALVIN  
KLEIN, DOUGO, CHIARA  
MACCHIAVELLO, EPAC3ET  
W HOLMES, JENNIFER FISHER  
En accord avec le magazine DOUGO, ISABEL  
MARANT ÉTOILE, TOU, HERVÉ  
LÉGER, STYLISTE, MICHAEL KORS,  
EPAC3ETH, JENNIFER FISHER.*



## James White

[www.art-dept.com](http://www.art-dept.com)





# Art Department



James White

[www.art-dept.com](http://www.art-dept.com)



# Art Department



James White

[www.art-dept.com](http://www.art-dept.com)

# Art Department



James White

[www.art-dept.com](http://www.art-dept.com)



# Art Department



James White

[www.art-dept.com](http://www.art-dept.com)

# Art Department



James White

[www.art-dept.com](http://www.art-dept.com)



# Art Department



James White

[www.art-dept.com](http://www.art-dept.com)

# Art Department



James White

[www.art-dept.com](http://www.art-dept.com)



# Art Department



James White

[www.art-dept.com](http://www.art-dept.com)

# Art Department



James White

[www.art-dept.com](http://www.art-dept.com)



# Art Department



James White

[www.art-dept.com](http://www.art-dept.com)

# Art Department



James White

[www.art-dept.com](http://www.art-dept.com)



# Art Department



James White

[www.art-dept.com](http://www.art-dept.com)

# Art Department



James White

[www.art-dept.com](http://www.art-dept.com)



# Art Department



James White

[www.art-dept.com](http://www.art-dept.com)

# Art Department



James White

[www.art-dept.com](http://www.art-dept.com)



# Art Department



James White

[www.art-dept.com](http://www.art-dept.com)

# Art Department



James White

[www.art-dept.com](http://www.art-dept.com)



# Art Department



Vest and shirt by **Costume National**

Hair by **Nicolas Eldin** at **Artist**

Make-up by **John McKay** at **De Facto** using **Chanel Beauté**

Nails by **Kayo Higuchi** at **De Facto** using **Chanel Le Vernis**

Styling assistant **Caitlyn Leary**

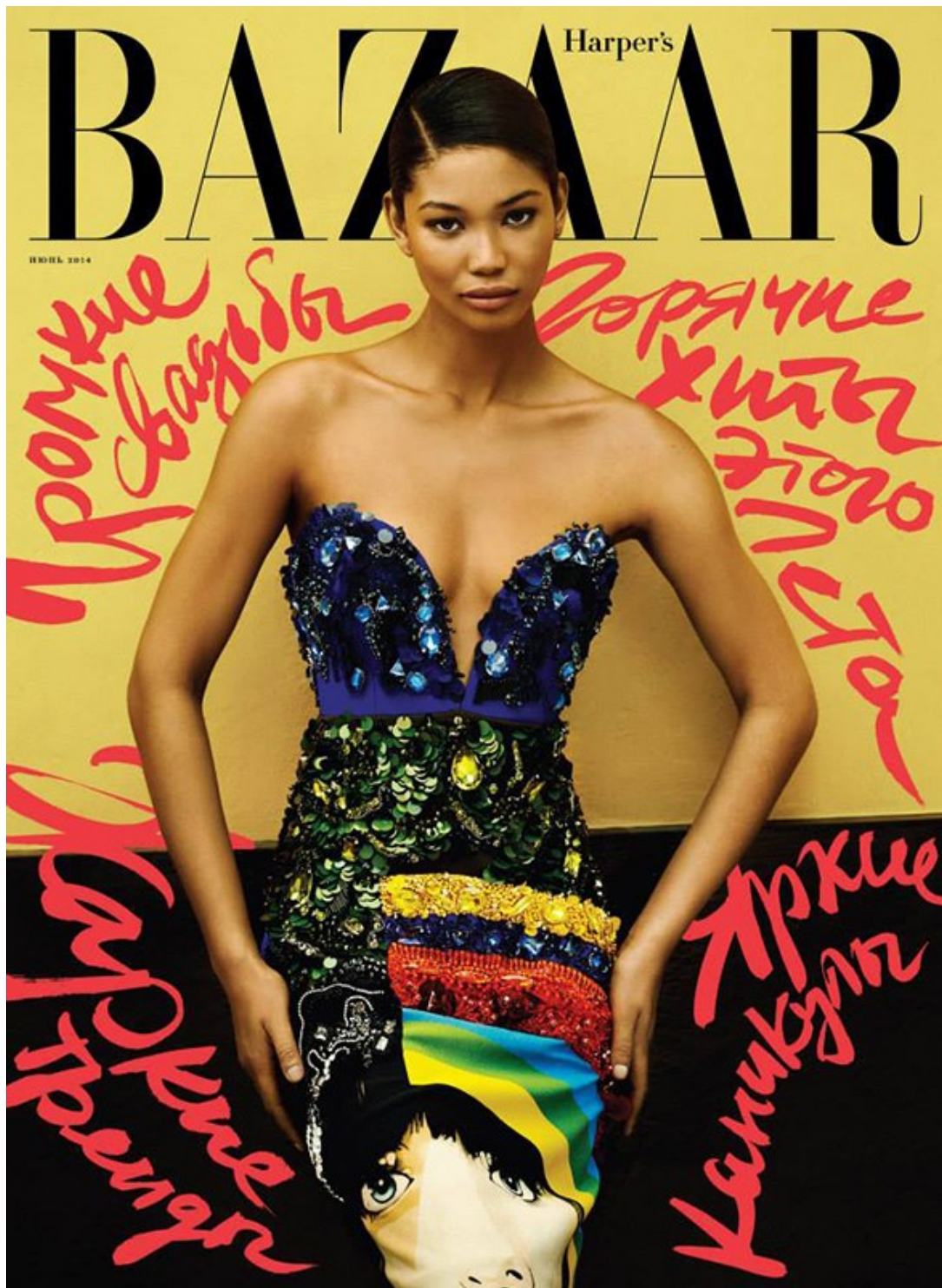
Set design by **Josephine Shokrian**

Model **Kirsten Owen** at **Select Model Management**

## James White

[www.art-dept.com](http://www.art-dept.com)

# Art Department



James White

[www.art-dept.com](http://www.art-dept.com)



# Art Department



James White

[www.art-dept.com](http://www.art-dept.com)

# Art Department



James White

[www.art-dept.com](http://www.art-dept.com)



# Art Department



James White

[www.art-dept.com](http://www.art-dept.com)

# Art Department



James White

[www.art-dept.com](http://www.art-dept.com)



# Art Department



James White

[www.art-dept.com](http://www.art-dept.com)

# Art Department



James White

[www.art-dept.com](http://www.art-dept.com)



# Art Department



James White

[www.art-dept.com](http://www.art-dept.com)

# Art Department



James White

[www.art-dept.com](http://www.art-dept.com)



# Art Department



James White

[www.art-dept.com](http://www.art-dept.com)

# Art Department



James White

[www.art-dept.com](http://www.art-dept.com)



# Art Department



James White

[www.art-dept.com](http://www.art-dept.com)

# Art Department



James White

[www.art-dept.com](http://www.art-dept.com)



# Art Department



James White

[www.art-dept.com](http://www.art-dept.com)

# Art Department



James White

[www.art-dept.com](http://www.art-dept.com)



# Art Department



James White

[www.art-dept.com](http://www.art-dept.com)

# Art Department



James White

[www.art-dept.com](http://www.art-dept.com)



# Art Department



James White

[www.art-dept.com](http://www.art-dept.com)

# Art Department



*Fotografías de Hans Neumann*  
Producción Harper's Bazaar en Español

Coordinación  
de moda: Catherine  
Newell-Hanson.  
Suéter y suéter  
oversize,  
Stella McCartney.



## James White

[www.art-dept.com](http://www.art-dept.com)



# Art Department



James White

[www.art-dept.com](http://www.art-dept.com)

# Art Department



James White

[www.art-dept.com](http://www.art-dept.com)



# Art Department



James White

[www.art-dept.com](http://www.art-dept.com)

# Art Department



James White

[www.art-dept.com](http://www.art-dept.com)



# Art Department



James White

[www.art-dept.com](http://www.art-dept.com)

# Art Department



James White

[www.art-dept.com](http://www.art-dept.com)



# Art Department



James White

[www.art-dept.com](http://www.art-dept.com)

# Art Department



James White

[www.art-dept.com](http://www.art-dept.com)



# Art Department



James White

[www.art-dept.com](http://www.art-dept.com)

# Art Department



James White

[www.art-dept.com](http://www.art-dept.com)



# Art Department



James White

[www.art-dept.com](http://www.art-dept.com)

# Art Department



James White

[www.art-dept.com](http://www.art-dept.com)



# Art Department



James White

[www.art-dept.com](http://www.art-dept.com)

# Art Department



James White

[www.art-dept.com](http://www.art-dept.com)



# Art Department



James White

[www.art-dept.com](http://www.art-dept.com)

# Art Department



James White

[www.art-dept.com](http://www.art-dept.com)



# Art Department



James White

[www.art-dept.com](http://www.art-dept.com)

# Art Department



James White

[www.art-dept.com](http://www.art-dept.com)



# Art Department



James White

[www.art-dept.com](http://www.art-dept.com)

# Art Department



James White

[www.art-dept.com](http://www.art-dept.com)



# Art Department



James White

[www.art-dept.com](http://www.art-dept.com)

# Art Department



James White

[www.art-dept.com](http://www.art-dept.com)



# Art Department



James White

[www.art-dept.com](http://www.art-dept.com)

# Art Department



James White

[www.art-dept.com](http://www.art-dept.com)



# Art Department



James White

[www.art-dept.com](http://www.art-dept.com)

# Art Department



James White

[www.art-dept.com](http://www.art-dept.com)



# Art Department



James White

[www.art-dept.com](http://www.art-dept.com)

# Art Department



James White

[www.art-dept.com](http://www.art-dept.com)



# Art Department



James White

[www.art-dept.com](http://www.art-dept.com)

# Art Department



James White

[www.art-dept.com](http://www.art-dept.com)



# Art Department



James White

[www.art-dept.com](http://www.art-dept.com)

# Art Department



James White

[www.art-dept.com](http://www.art-dept.com)