

Art Department



Abrigo, pantalón
y zapatos.
Dolce & Gabbana

THE ART OF SOLITUDE

Realización **Fernando Carrillo**
Fotos **Jacob + Carol**

Nicolas Eldin

www.art-dept.com

Art Department



Nicolas Eldin

www.art-dept.com

Art Department



Nicolas Eldin

www.art-dept.com

Art Department



Nicolas Eldin

www.art-dept.com

Art Department



Camisa de cuero
y pantalón.
Dolce & Gabbana

MODELO:
IVAN VUCKOVIC
@ DNA MODELS
GROOMER: **NICOLAS**
ELDIN @ ART
DEPARTMENT
COORDINACIÓN DE
MODA: **EMILY DRAKE**
ASISTENTE DE MODA:
LEXI LANG
JACOB + CARROL @
THE GALLERY AGENCY

Nicolas Eldin

www.art-dept.com

Art Department



Nicolas Eldin

www.art-dept.com

Art Department



Nicolas Eldin

www.art-dept.com

Art Department



Nicolas Eldin

www.art-dept.com

Art Department



Suéter, bufanda,
chamarra, pantalón
y botas. **Dolce
& Gabbana**

Nicolas Eldin

www.art-dept.com

Art Department



Nicolas Eldin

www.art-dept.com

Art Department



Nicolas Eldin

www.art-dept.com

Art Department



Nicolas Eldin

www.art-dept.com

Art Department



Nicolas Eldin

www.art-dept.com

Art Department



Nicolas Eldin

www.art-dept.com

Art Department



Nicolas Eldin

www.art-dept.com

Art Department



Nicolas Eldin

www.art-dept.com

Art Department



Nicolas Eldin

www.art-dept.com

Art Department



Nicolas Eldin

www.art-dept.com

Art Department



Nicolas Eldin

www.art-dept.com

Art Department



Nicolas Eldin

www.art-dept.com

Art Department



Nicolas Eldin

www.art-dept.com

Art Department



Nicolas Eldin

www.art-dept.com

Art Department

ESSENTIAL HOMME



MALEFASHIONTRENDS.COM

Nicolas Eldin

www.art-dept.com

Art Department



Nicolas Eldin

www.art-dept.com

Art Department



ON LEFT
Jacket by **GIVENCHY BY
RICCARDO TISCI**
Shirt and overalls by **ANTONIO
MARRAS**

IN MIDDLE:
Coat by **ETRO**
Skirt by **UMA WANG**
Stylist's own face body-suit

ON RIGHT:
Blazer, pants, and belt by
BALMAIN
Cardigan by **ACNE STUDIOS**

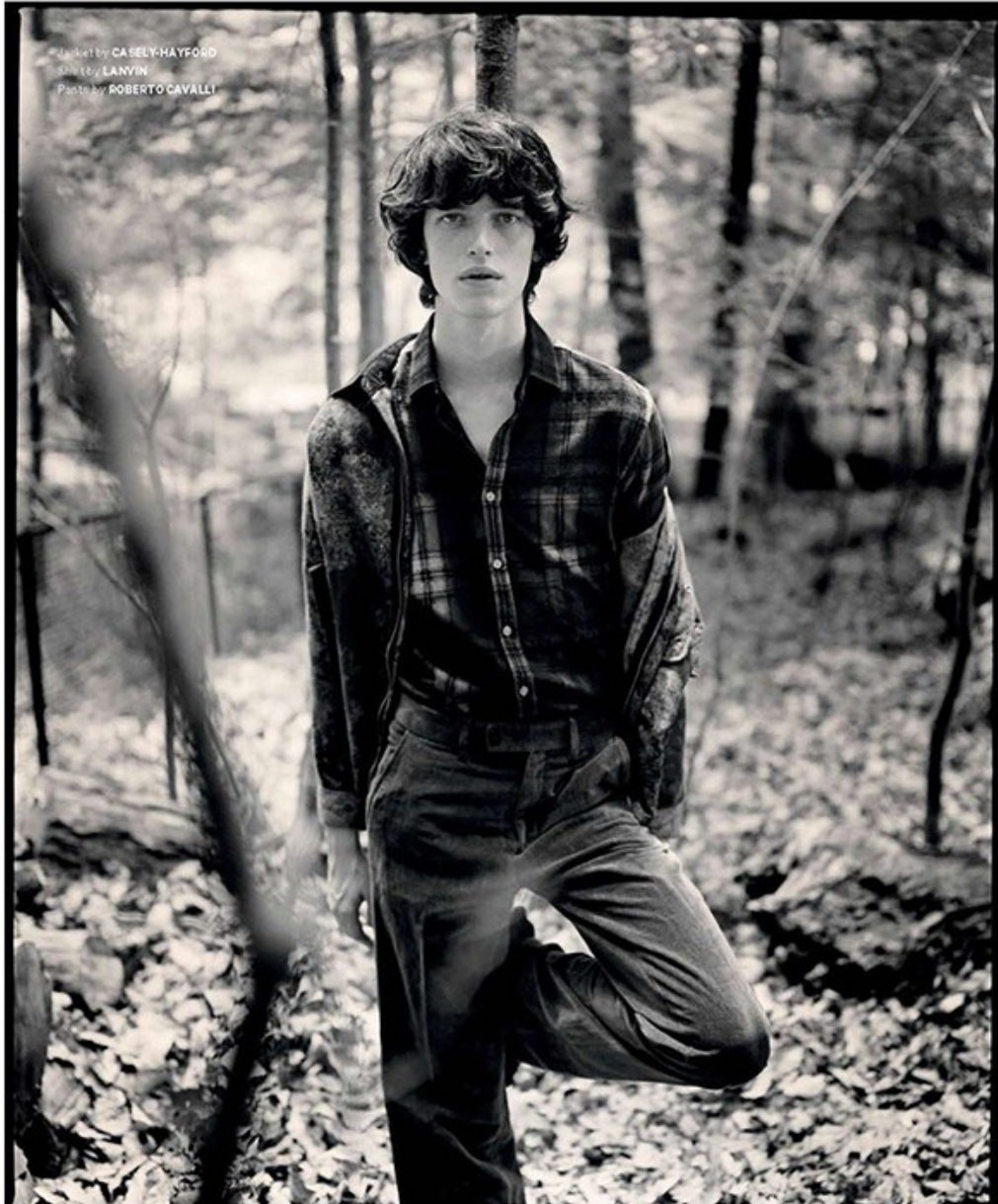
MALEFASHIONTRENDS.COM

Nicolas Eldin

www.art-dept.com

Art Department

ABSENT DAZE



MALEFASHIONTRENDS.COM

Nicolas Eldin

www.art-dept.com

Art Department

ESSENTIAL HOMME



MALEFASHIONTRENDS.COM

Nicolas Eldin

www.art-dept.com

Art Department

ABSENT DAZE



MALEFASHIONTRENDS.COM

Nicolas Eldin

www.art-dept.com

Art Department



Nicolas Eldin

www.art-dept.com

Art Department



Portfolio

The main entrance lobby will also serve as a public gallery, offering nearly 1,000 sq ft of free-entry exhibition space.

Callum R wears coat, £1,690; jacket, £1,900; shirt, £440; trousers, £480, all by Dior Homme. Socks (worn throughout), £14, by Pantherele. Shoes, £498, by Ludwig Reiter.

Adam wears jacket, £1,680; shirt, £550; trousers £400, all by Saint Laurent by Hedi Slimane. Tie, £79, by Richard James.

Shoes, £95, by Church's. Callum W wears suit £1,890; waistcoat, £435; shirt, £200, all by Gucci. Shoes, £95, by Church's.

Nicolas Eldin

www.art-dept.com

Art Department



Nicolas Eldin

www.art-dept.com

Art Department



Portfolio

An internal stairwell allows visitors to flow freely between the eight storeys, or they can use one of four distinctive lifts conceived by artist Richard Artschwager

Suit, £450; shirt, £80, both by Tommy Hilfiger.
Tie, £75, by Richard James.
Shoes, £385, by Church's

Nicolas Eldin

www.art-dept.com

Art Department



Nicolas Eldin

www.art-dept.com

Art Department



Nicolas Eldin

www.art-dept.com

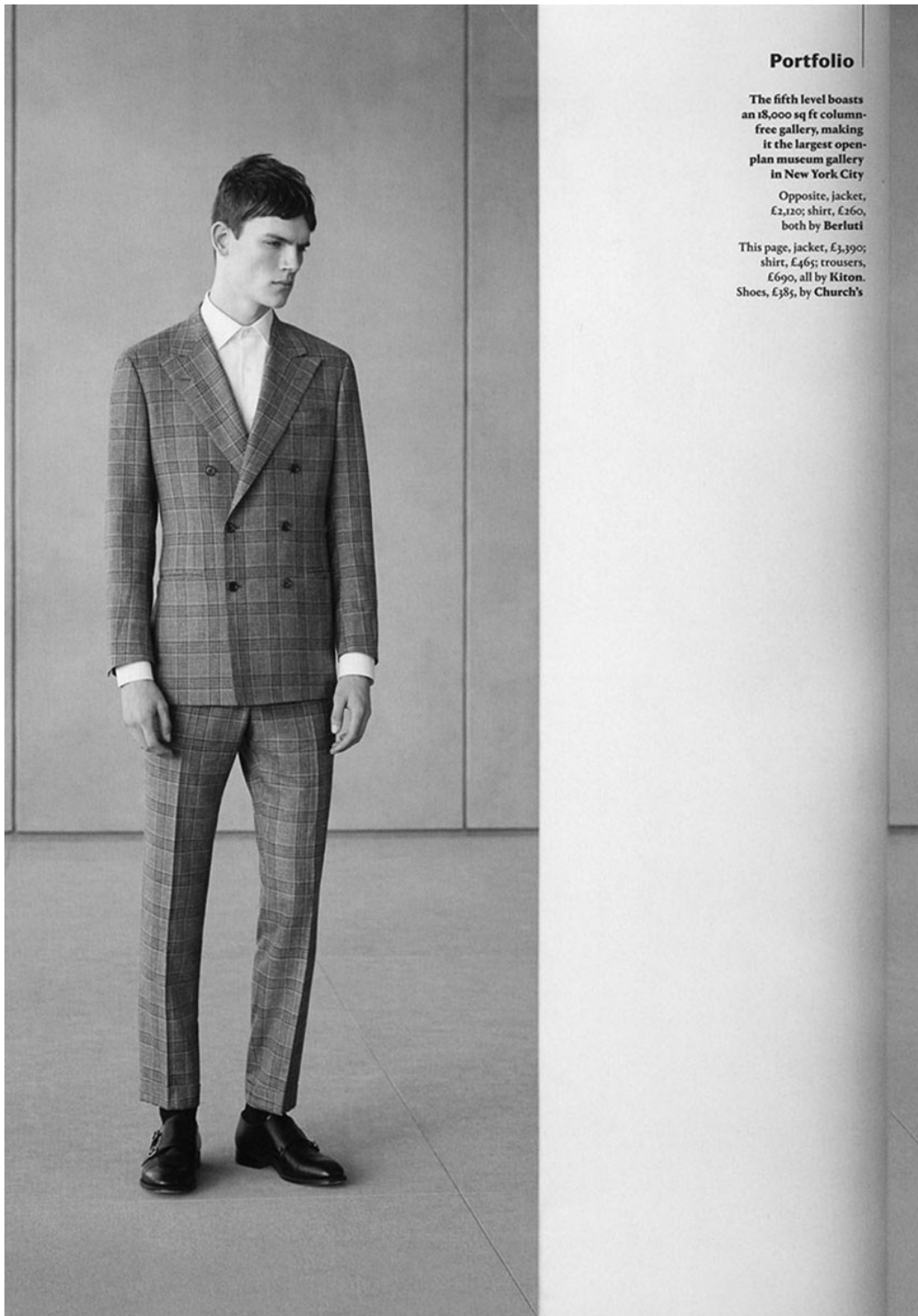
Art Department



Nicolas Eldin

www.art-dept.com

Art Department



Portfolio

The fifth level boasts an 18,000 sq ft column-free gallery, making it the largest open-plan museum gallery in New York City

Opposite, jacket, £2,120; shirt, £260, both by **Berluti**

This page, jacket, £3,390; shirt, £46; trousers, £690, all by **Kiton**. Shoes, £385, by **Church's**

Nicolas Eldin

www.art-dept.com

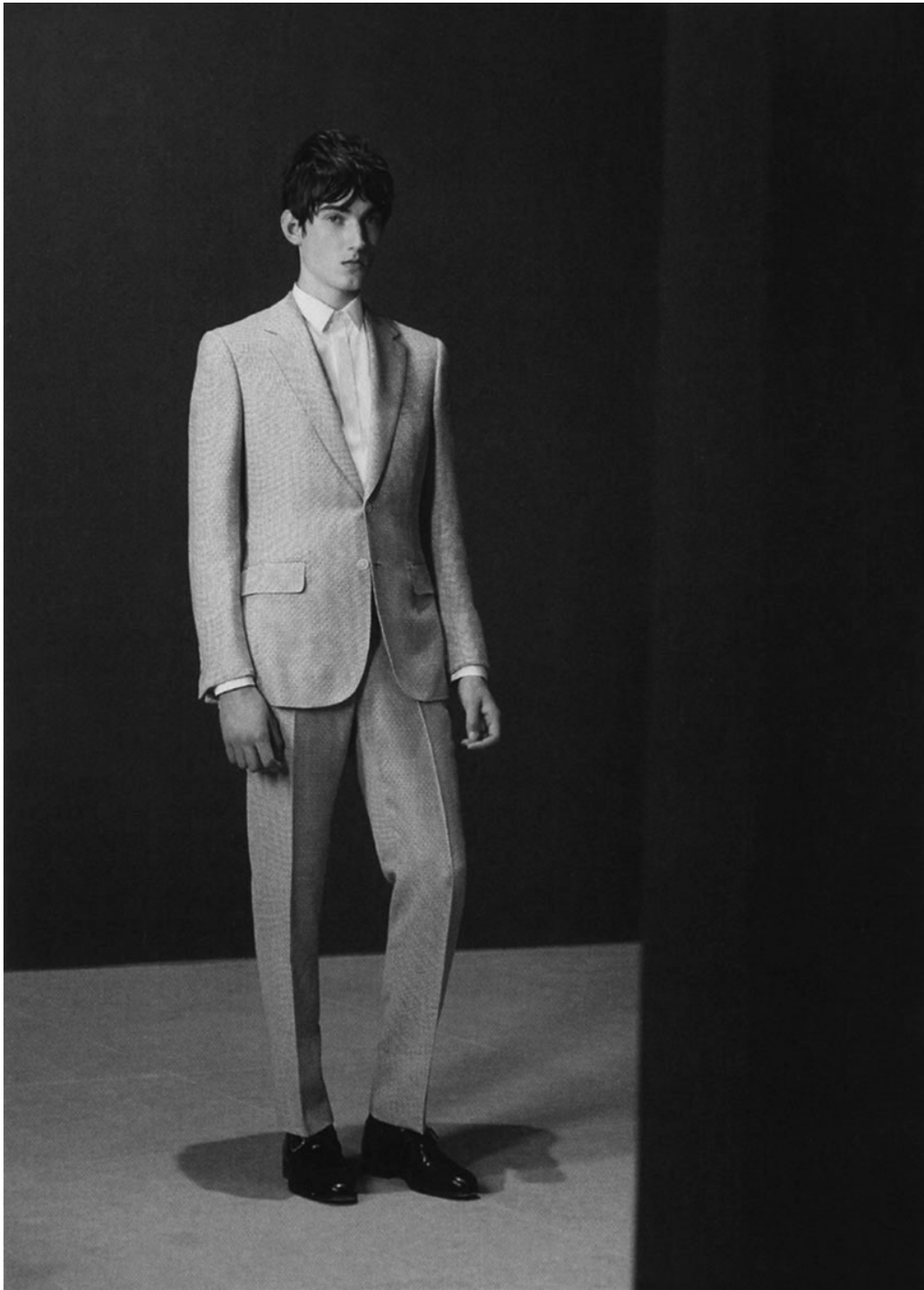
Art Department



Nicolas Eldin

www.art-dept.com

Art Department



Nicolas Eldin

www.art-dept.com

Art Department

Portfolio

The new Whitney will also feature a 170-seat theatre, a ground floor retail space and a top floor café

This page, suit, £1,750; shirt £195, both by Kilgour. Tie, £75, by Richard James. Shoes, £385, by Church's

Opposite, Adam wears jacket (part of suit), £1,590; shirt, £295; trousers, £490, all by Dunhill. Shoes £385, by Church's

Callum R wears coat, £1,790; jacket, £2,090; trousers, £790, all by Ermenegildo Zegna Couture. Shirt, £190, by Corneliani. Shoes, £385, by Church's

For stockists, see page 300



Hair: Nicolas Eldin at Art Department

Make-up: Ingeborg using Kiehl's at TMC-LA

Photographer's assistants: Spenser Ostrander, Satoshi Matoda

Digital operator: Ross Thompson

Fashion assistants: Malaika Crawford, Eleanor Vousden, Sophie Watson, Eyob Yohannes

Models: Adam Butcher at IMG, Callum Rockall and Callum Ward at New York Model Management

Casting: Julia Lange

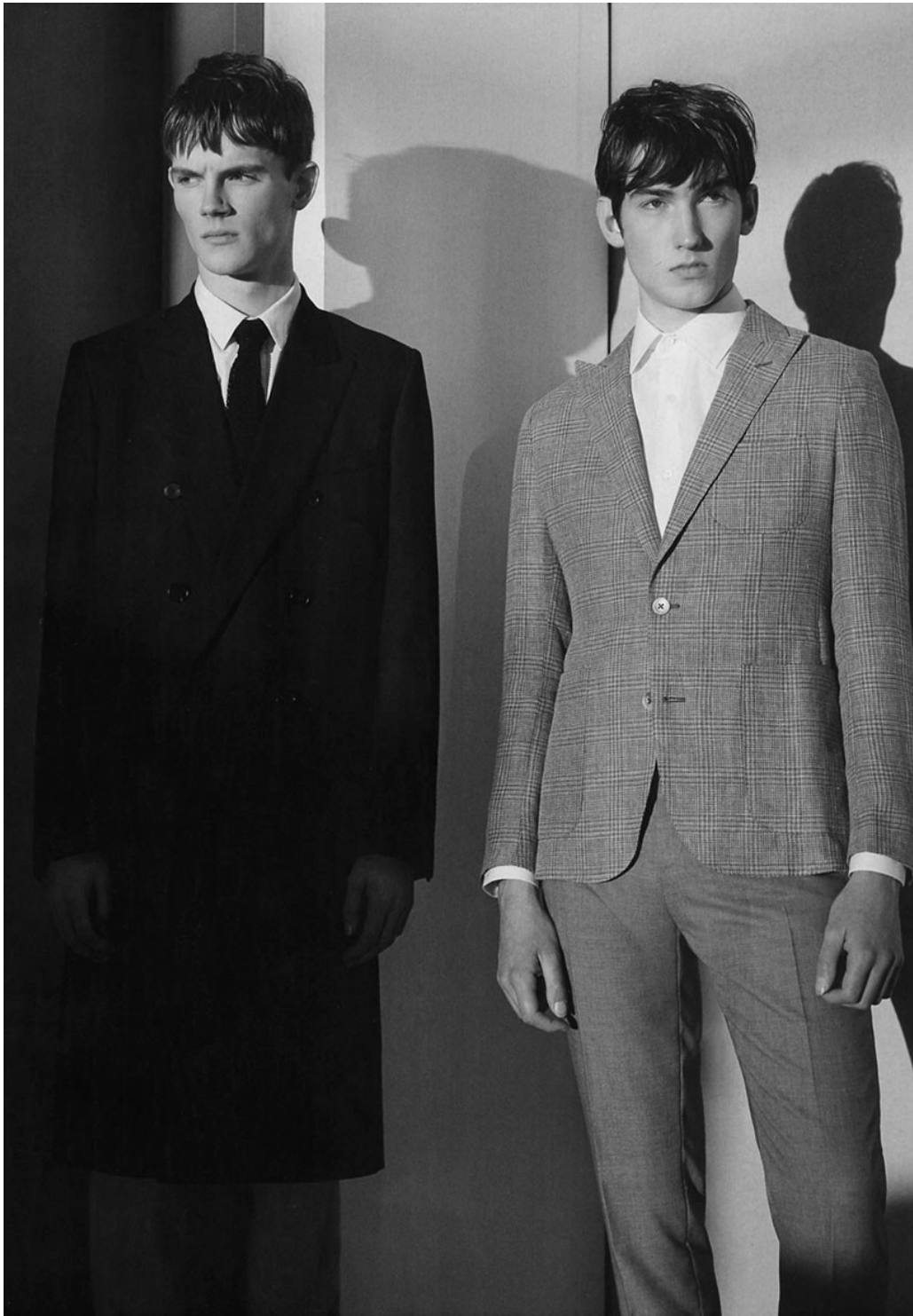
Production: HMS Production

Shot on location at the Whitney Museum of American Art, 99 Gansevoort Street, New York, whitney.org

Nicolas Eldin

www.art-dept.com

Art Department



Nicolas Eldin

www.art-dept.com

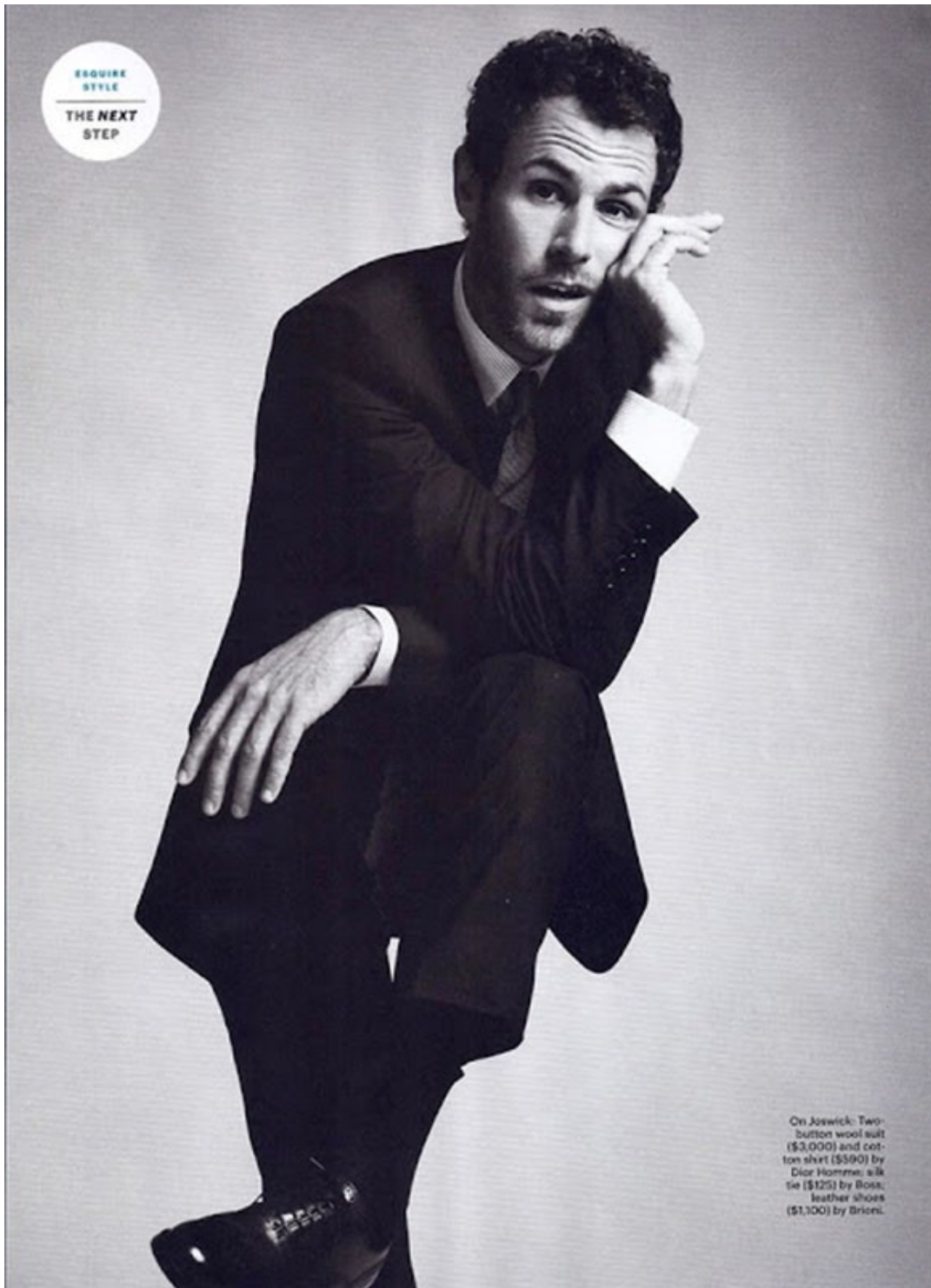
Art Department



Nicolas Eldin

www.art-dept.com


Art Department



Nicolas Eldin

www.art-dept.com

Art Department



Double-breasted wool suit (\$1,895) and cashmere turtleneck sweater (\$595) by Burberry London.

TIP NO. 712

IF YOU'RE GONNA LAYER BLACK ON BLACK—AND IF YOU NEED THE FOLLOWING, THAT'S A-OKAY WITH US—MAKE SURE THERE'S SOME CONTRAST IN THE TEXTURES, DIFFERENT WEAVES OF WOOL AND COTTON HOLD BLACK DYE DIFFERENTLY, SO BY MIXING A CASHMERE SWEATER WITH A WOOL JACKET, YOU'RE BOUND TO HAVE A SUBTLE, APPEALING CONTRAST BETWEEN BLACKS.

FOR STORE INFORMATION SEE PAGE 212. CASTING BY ANDREA NINA RAMOS FOR URBAN PRODUCTIONS. GROOMING BY NICOLAS ELGIN FOR ARTLIST. PROP STYLING BY CHRIS STONE.

get_image.com Clip, Save, Share, from any page.

101

Nicolas Eldin

www.art-dept.com

Art Department



TIP NO.
452

FORGET THE FLAT, SOULLESS SURFACES THAT TYPIFY MOST DRESSY SUIT CLOTHS AND LOOK FOR WEAVES WITH UNCOMMON TEXTURES. THE SUBTLE HORIZONTAL GRAIN OF THIS TWO-PIECE ADDS DIMENSION AND DEPTH TO THE SUIT AND DEMANDS A CLOSER LOOK.

Two-button wool suit (\$1,295) and cotton shirt (\$395) by Calvin Klein
Klein Collection; cashmere wool-and-silk tie (\$250) by Brunello Cucinelli.

get, not page.com Clip, Save, Share, from any page. Download free from the iTunes App Store or Google Play.

Nicolas Eldin

www.art-dept.com

Art Department



ESQUIRE
STYLE
THE NEXT
STEP

This page, on Ambrecht:
Two-button wool suit (\$3,270), cotton shirt (\$410), silk tie (\$175), and silk pocket square (\$130) by Dunhill; leather shoes (\$720) by Santoni; steel Star Retrograde automatic watch (\$4,865) by Montblanc. Opposite, on Shawn Joswick, denim designer and consultant: Double-breasted wool-and-silk suit (\$4,595) by Giorgio Armani; cotton shirt (\$99) by Banana Republic; silk tie (\$130) by John Varvatos; leather shoes (\$410) by Dunhill.

Nicolas Eldin

www.art-dept.com

Art Department



Nicolas Eldin

www.art-dept.com

Art Department



Nicolas Eldin

www.art-dept.com

Art Department



Nicolas Eldin

www.art-dept.com

Art Department



ESQUIRE
STYLE

THE NEXT
STEP

This page, on Thomas Wirthenschlaeger, documentary filmmaker: Cotton trench coat (\$3,950) by Louis Vuitton; three-button cashmere-and-silk suit (\$8,562), cotton shirt (\$870), and cashmere-wool-and-silk tie (\$280) by Kiton; leather shoes (\$900) by Santoni. Opposite: Two-button wool-and-cashmere suit (\$2,950), cotton shirt (\$730), and silk tie (\$215) by Louis Vuitton; steel Ballon Bleu watch (\$5,900) by Cartier.

173

Nicolas Eldin

www.art-dept.com

Art Department

CARBON COPY CCO



FRANCISCO LACHOWSKI / WALTER LEON WADSON / DANNY SCHWARZ / KINSH HERRANDEZ / NICKY AYON
NICOLAS RIPOLL / ASKE BRORSON PIERRE-MARIAL / MODEL OF THE MONTH IS DAVID BIVELA

Nicolas Eldin

www.art-dept.com

Art Department



Nicolas Eldin

www.art-dept.com

Art Department



Nicolas Eldin

www.art-dept.com

Art Department



Nicolas Eldin

www.art-dept.com

Art Department



Axel wears
Jacket by LANVIN
Pants with suspenders by VIVIENNE

Nicolas Eldin

www.art-dept.com

Art Department



Nicolas Eldin

www.art-dept.com

Art Department



Nicolas Eldin

www.art-dept.com

Art Department



Nicolas Eldin

www.art-dept.com

Art Department



Mattie wears
White shirt by LANVIN
Pants by WALTER VAN BEIRENDONCK
Suspenders stylist's own

Nicolas Eldin

www.art-dept.com

Art Department



Nicolas Eldin

www.art-dept.com

Art Department



Nicolas Eldin

www.art-dept.com

Art Department



Pierre wears
Jacket by LAFAY
Shirt by DIOR HOMME
the FREESOUL

Nicolas Eldin

www.art-dept.com

Art Department



Maithe wears
White shirt by LOUIS VUITTON
Hat by LANVIN
Suspenders stylist's own

Nicolas Eldin

www.art-dept.com

Art Department



Nicolas Eldin

www.art-dept.com

Art Department

Nicolas wears
T-shirt by DSQUARED / Leggings with suspenders by BERNHARD WILLHELM
necklace by CEDRIC JACQUEMYN / Leather bracelet by VIVIENNE WESTWOOD MAN



PHOTOGRAPHY BY NICOLAS VALOIS / STYLING BY RENE GLOOR
STYLIST ASSISTANT: SIMON NYGARD
MAKE-UP BY YACINE DIALLO / HAIR BY NICOLAS ELDIN
DIGITAL ASSISTANT: EMMANUEL@IMAGIN
PHOTOGRAPHER ASSISTANT: ELEONORA BRAVI
NICOLAS RIPOLL AT BANANAS / FRANCISCO LACHOWSKI AT FORD EUROPE
MALTHE LIAD MADSEN & AXEL BRORSON AT FORD EUROPE
AND PIERRE-HARALD LEDUCQ AT MAJOR PARIS

Nicolas Eldin

www.art-dept.com

Art Department



Nicolas Eldin

www.art-dept.com

Art Department



Nicolas Eldin

www.art-dept.com

Art Department



Nicolas Eldin

www.art-dept.com

Art Department



Nicolas Eldin

www.art-dept.com

Art Department



Nicolas Eldin

www.art-dept.com

Art Department



Nicolas Eldin

www.art-dept.com

Art Department



Nicolas Eldin

www.art-dept.com

Art Department



Nicolas Eldin

www.art-dept.com

Art Department



Nicolas Eldin

www.art-dept.com

Art Department



Nicolas Eldin

www.art-dept.com

Art Department



Tendance

Jeu, set et mode

Un match sur terre battue nourri de références aux années 1920, période mythique du tennis. Cotonnades, maille et tailoring sport jouent le grand chelem sur une palette de blancs et d'écrus.

PHOTOS :
KOTO BOLOPO POUR
L'EXPRESS STYLES
RÉALISATION :
MIKA MIZUTANI

15/02/2011 © 43

42 © 15/02/2011

Nicolas Eldin

www.art-dept.com

Art Department



Robert
Pull col V en coton
torsadé, Lacoste, 125 €
Pantalon de pyjama
en popeline de coton,
Hermès, 450 €
Chemise en coton,
Smalto, 105 €
Cravate en soie,
Paul Smith, 87 €
Chaussures Zizi, Repetto.

Page de droite.
Chris
Pull en maille
de coton tricoté
à la main,
Gucci, 2 250 €
Bermuda en coton,
Cerruti, 230 €

Nicolas Eldin

www.art-dept.com

Art Department



Nicolas Eldin

www.art-dept.com

Art Department



Robert
Pull en maille de coton,
Barberry Sport, 295 €.
Chemise en coton,
Ermengildo Zegna, 180 €.
Cravate en soie tricotée,
Sandro, 95 €. Pantalon en
denim, Paul Smith, 227 €.

Page de droite.

De g. à dr.

Gerhard

Polo en piqué de coton,
Petit Bateau, 40 €.
Pantalon de pyjama
en popeline de coton,
Hermès, 450 €.
Cravate rayée en soie,
Lanvin, 300 €.
Derbys en cuir et lin,
Salvatore Ferragamo, 450 €.
Ceinture tressée en Nylon,
L'Aiglon, 93 €.

Robert

Polo en piqué de coton,
Lacoste Live, 85 €.
Cravate en satin de soie,
Paul Smith, 87 €.
Pantalon en coton,
Azzaro, 135 €.

Chris

Polo en piqué de coton,
Lacoste, 78 €.
Cravate en soie tricotée,
Sandro, 95 €.
Chaussures de sport
en cuir, Hermès, 550 €.
Pantalon de costume
en coton et soie,
Kenzo, 920 € (le costume).

Antoine

Polo en coton,
Sandro, 95 €.
Pantalon de pyjama
en popeline de coton,
Hermès, 450 €.
Cravate en soie tricotée,
Sandro, 95 €.
Chaussures Zizi, Repetto.
Ceinture vintage,
Kilwisch.

Nicolas Eldin

www.art-dept.com

Art Department



Page de gauche.
A g., Robert
Pull en coton et cachemire,
Polo Ralph Lauren, 345 €.
Chemise en coton,
Azzaro, 109 €.
A dr., Antoine
Cardigan en coton et laine,
Tommy Hilfiger, 160 €.
Chemise en popeline
de coton extensible,
Laoste, 110 €.
Cravate en satin de soie,
Paul Smith, 87 €.

Gerhard
Veste croisée
en toile de parachute,
Bottega Veneta, 1 480 €.
Chemise en coton,
Smalto, 105 €.
Bermuda en coton,
Prada, 250 €.
Derbys en cuir et lin,
Salvatore Ferragamo, 450 €.

Nicolas Eldin

www.art-dept.com

Art Department



Nicolas Eldin

www.art-dept.com

Art Department



Nicolas Eldin

www.art-dept.com

Art Department



Gerhard

Cardigan en coton,
Louis Vuitton, 990 €.
Chemise en coton,
Ermenegildo Zegna, 180 €.
Cravate en maille
de soie, Hermès, 250 €.

Page de droite.

Antoine

Veste en lin,
Paul & Joe, 510 €.
Polo en coton,
Sandro, 95 €.
Bermuda en coton,
IKKS, 90 €.
Chaussures Ziri, Repetto.
Foulard Losange,
en popeline de coton,
Hermès, 180 €.

Les mannequins portent
des chaussettes montantes
blanches Falke, 16 €.

Nicolas Eldin

www.art-dept.com

Art Department



Remerciements au
Racing Club de France,
Club La Boule,
route du Pont-Colbert,
Versailles (Yvelines),
01-39-50-59-41,
[www.racingclubdefrance.net/
racing/tennis/](http://www.racingclubdefrance.net/racing/tennis/)
et au Musée de la Fédération
française de tennis,
Stade Roland-Garros,
7, avenue Gordon-Benett,
Paris (XVII^e),
01-47-43-48-48,
www.fnt.fr/site-tennisour/

Mannequins :
Gerhard Freidl c/o New
Medison / Chris Beck,
Robert Laby et Antoine des
Barvais c/o Succes,
Coiffeur : Nicolas Eldin
c/o Artlist.
Opérateur digital :
Thomas c/o Imag'in
Assistants du photographe :
Mathieu Boutang et
Christian Borth.
Assistant styliste :
Antoine Sequin
avec Alice Ica.
Production :
Ghislaine Peraria.

Cartes d'adresse page 85

Nicolas Eldin

www.art-dept.com