

Art Department

PANTENE

3X LESS HAIRFALL
SEE THE DIFFERENCE IN YOUR PONYTAIL

Our most advanced Pro-V formula strengthens your hair from root to tip for 3x less hairfall* and a visibly healthier ponytail. You'll see and feel the difference, and so will everyone else.

Want even more shine and nourishment? Add a few drops of our luscious Keratin Oil.

STRONG IS BEAUTIFUL



*Based on hair loss frequency vs. non-conditioned shampoo.



Nicolas Eldin

Art Department



Nicolas Eldin

www.art-dept.com

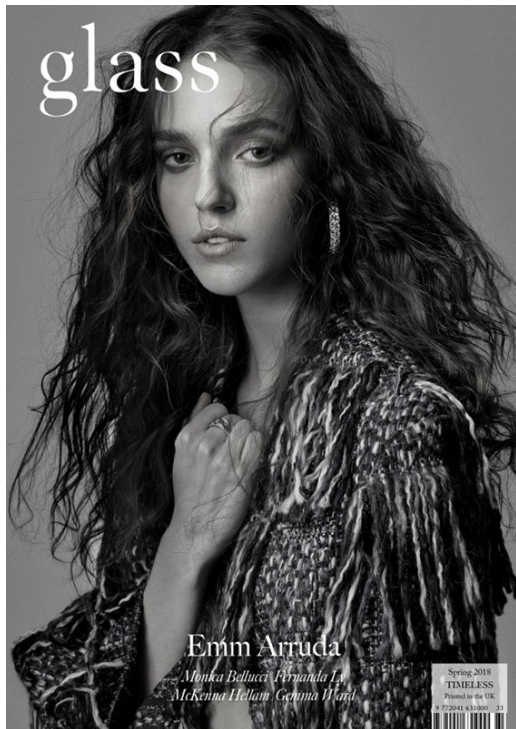
Art Department



Nicolas Eldin

www.art-dept.com

Art Department



Nicolas Eldin

www.art-dept.com

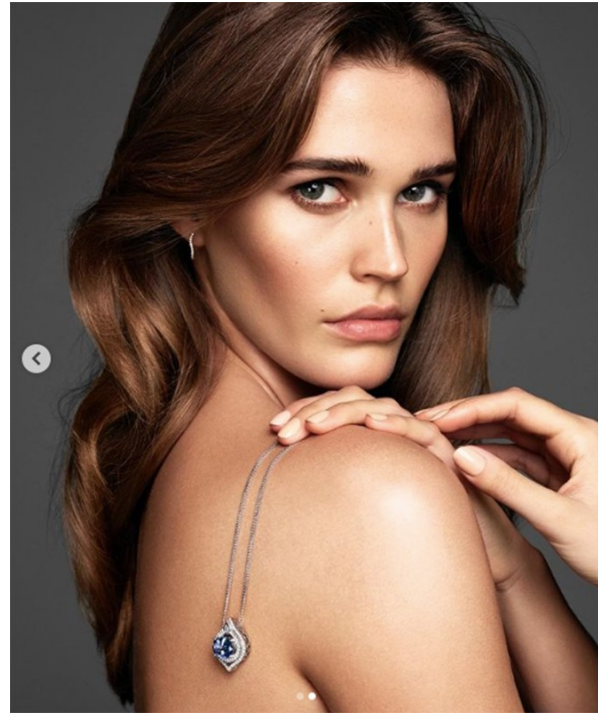
Art Department



Nicolas Eldin

www.art-dept.com

Art Department



neu classic
special issue

深酒紅唇
時尚史上最受矚目的色澤，深酒紅唇，
如蜜斯蓮 (Verano)、黃色上衣 (Paola)、
深藍色絲綢手套 (Suzanne)、
貝爾羅西戒指 (Joanna Laura Constantine)、
奧斯威尼 (TommyKorn)

濃妝艷抹似乎成為 20 年代女性形象的最佳象徵，在電影
傳聞黑白片的狀態之下，我們看到的是深色的唇以及深澤的髮染造型。
此次以 20 年代為靈感而來的設計師 Michael Anthony 說：
「Mary Pickford 是當時性感的 IT girl，她那美性感的造型讓我印象深刻，
我這次利用現代更精緻的飾物產品，打造出來的精緻妝容，可以讓女性
更摩登，而不是真的像 20 年代那些濃妝艷抹的女性一樣。」
深酒紅唇的紅，雖然成為 20 年代妝容的象徵，但隨著時文更趨於市場上，
彩妝師把性靈顯赫和深酒紅唇的妝容，就是利用鮮豔的深酒紅唇的妝容。
Michael 說：「需要像以前這種豐潤飽滿的妝容，上下性的比例就很重要，
如果天生骨相較瘦，可以將妝容出線條之外，因為這種深酒紅色，在視覺上會有
讓果實顯小的視覺效果，所以不難將唇部加大，讓上下性的比例更協調。」
紅潤部分，不過是 20 年代的簡單妝容，而是將現今的妝容
融合自然效果，色調上更暖色一致，有明顯的線條之外，再讓其更顯化，
輕鬆散發出一般女性的獨特魅力，至於飾物有如顯赫的鑲嵌，
則是想讓成型的造型，多一點年轻化，配合於深酒紅的色彩舉染，
讓女性擁有自己最美的一面。 撰文 王正男

20 年代，是女性揮脫束縛的時代，擺脫了僵硬的
淑女形象，高興享到屬於自己身型的決定權，縱使在夜晚的
舞會，那個年代是個強調衝突與摩登的女性世代。

Photographed by Enrique Vega

retro glam
華麗年代

MAKEUP ARTIST: MICHAEL ANTHONY @ MICHAEL ANTHONY MAC PRO # TRACONETRENK.COM
HAIR STYLIST: MICHAEL ELLIOTT # ART DIRECTOR: TONYA THOMAS # STYLING: KIMBERLY HARRISON # SET STYLIST: CHRIS TIAN # ANDREZ TEJEDA
MANICURE: KATIE KROD # HAIR STYLIST: JESSICA # PHOTOGRAPHY: CHANTEL LE VERRON, MICHAEL JERIC, ALEXANDER # SOCIAL MEDIA MANAGEMENT
POST PRODUCTION: THE LINDA FILM PHOTOGRAPHY ASSISTANT: ANDREW SPINALE

160

Nicolas Eldin

www.art-dept.com

Art Department



Nicolas Eldin

www.art-dept.com

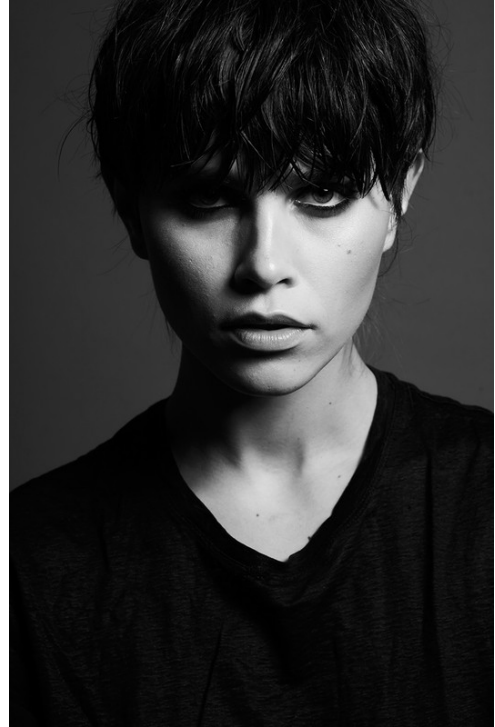
Art Department



Nicolas Eldin

www.art-dept.com

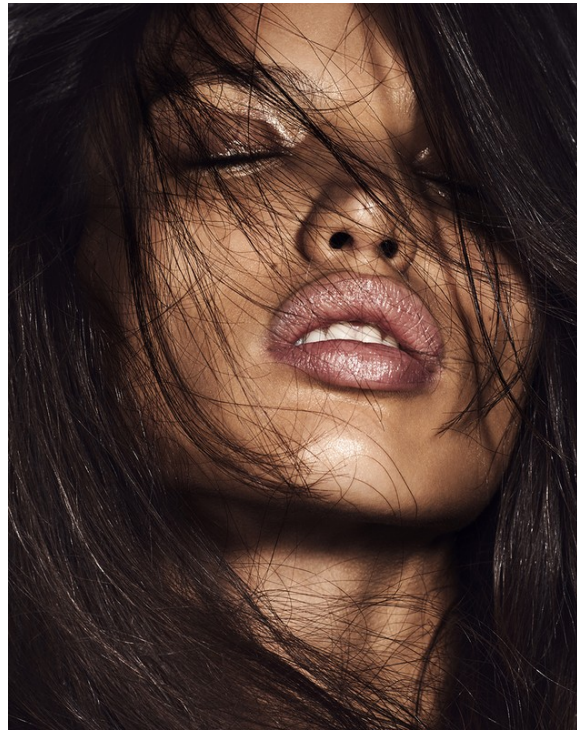
Art Department



Nicolas Eldin

www.art-dept.com

Art Department



Nicolas Eldin

www.art-dept.com

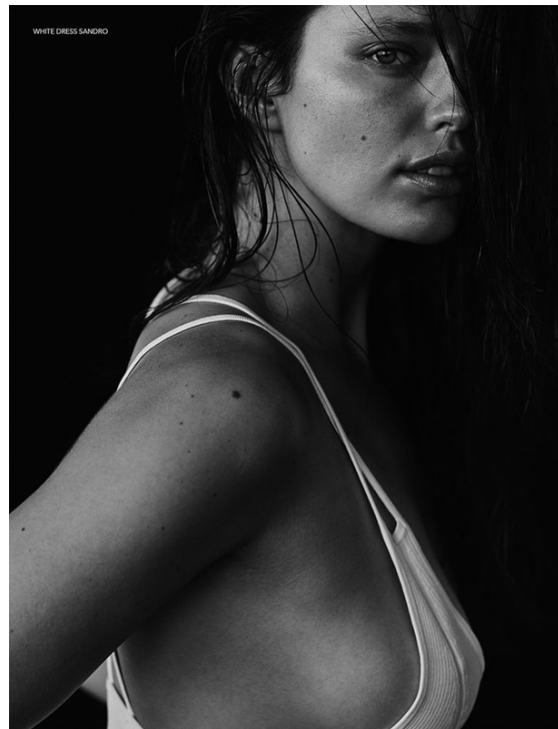
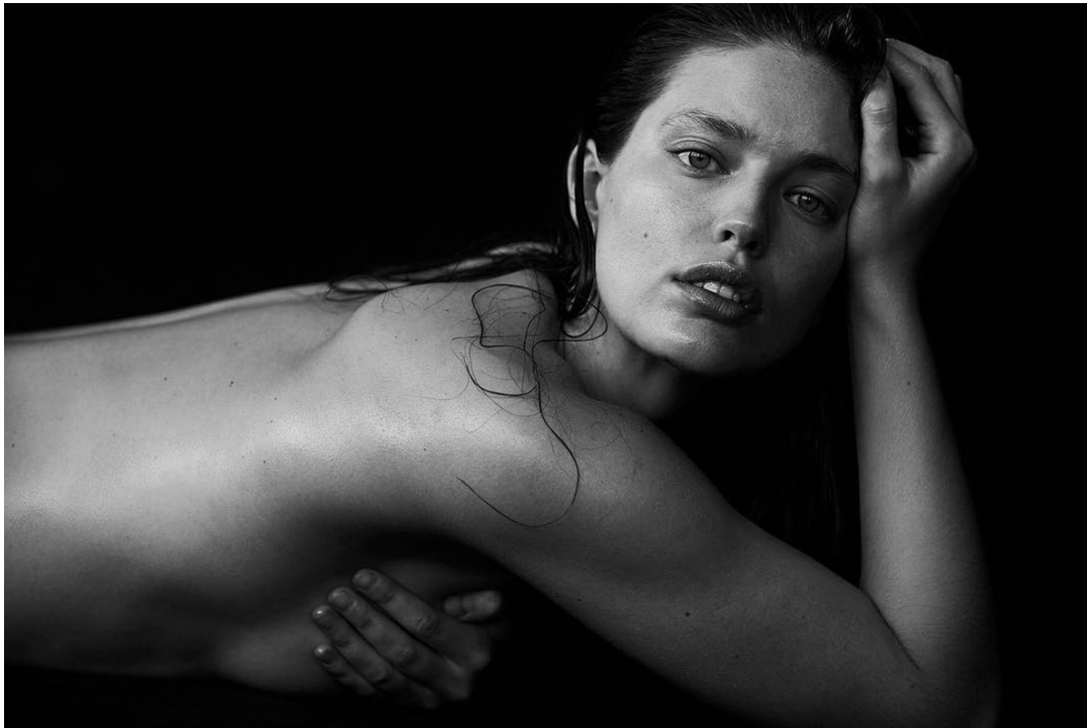
Art Department



Nicolas Eldin

www.art-dept.com

Art Department



Nicolas Eldin

www.art-dept.com

Art Department



Nicolas Eldin

www.art-dept.com

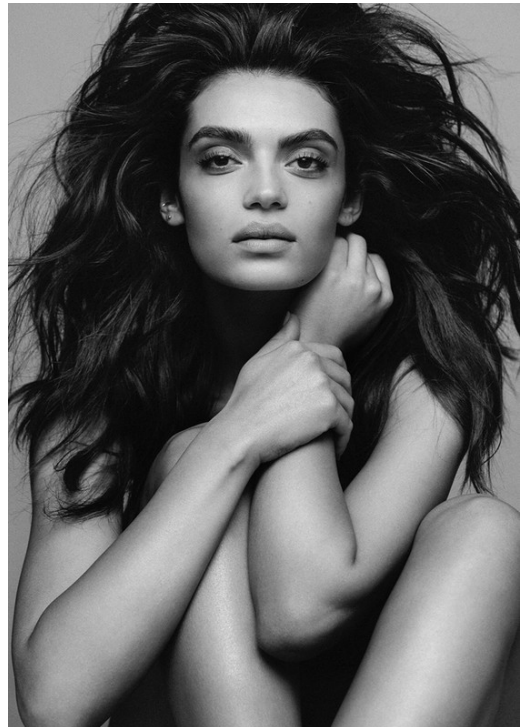
Art Department



Nicolas Eldin

www.art-dept.com

Art Department



Nicolas Eldin

www.art-dept.com

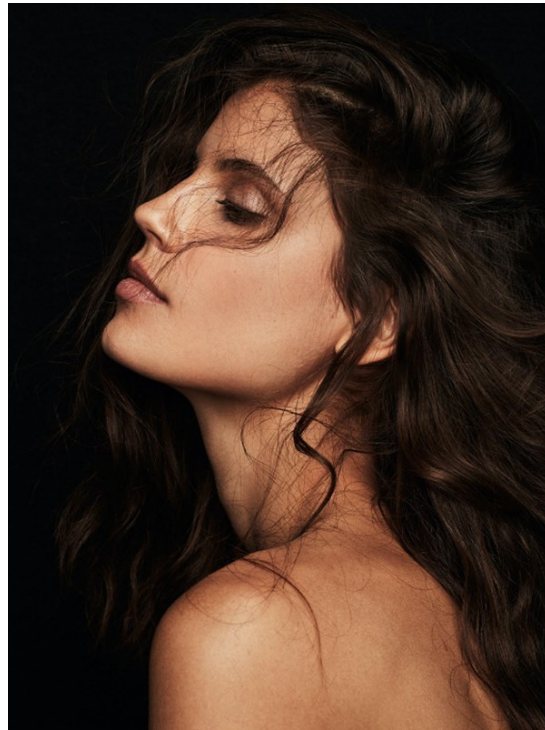
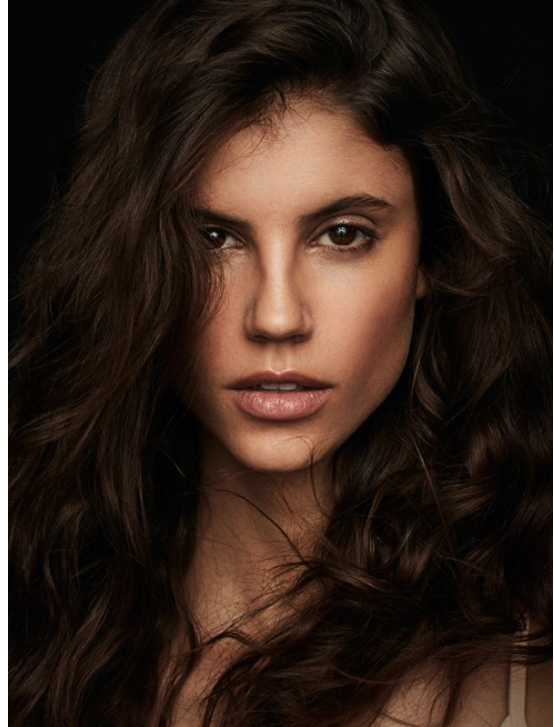
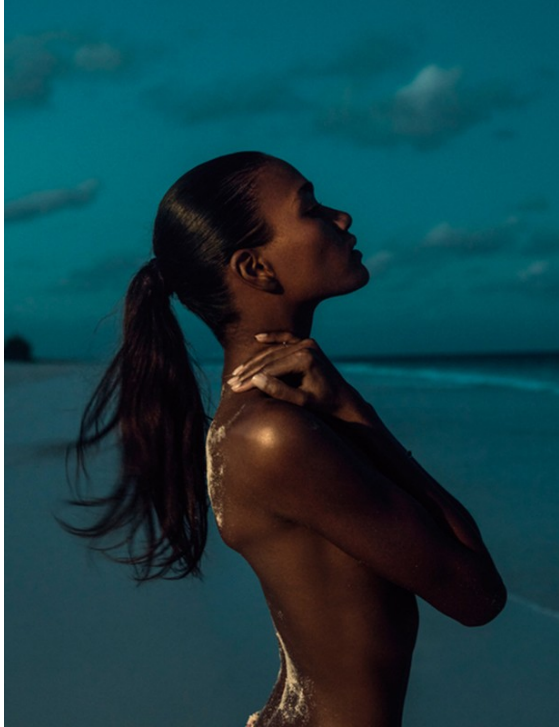
Art Department



Nicolas Eldin

www.art-dept.com

Art Department



Nicolas Eldin

www.art-dept.com

Art Department



Nicolas Eldin

www.art-dept.com

Art Department



Nicolas Eldin

www.art-dept.com

Art Department



Nicolas Eldin

www.art-dept.com

Art Department



Nicolas Eldin

www.art-dept.com

Art Department



BEAUTY

Si torna a sorridere e questo è il momento della ricarica.
Con il make-up dai toni fluo e vitaminici (giallo e arancio di stagione)
e tecniche di «contouring» che esaltano i punti luce.
E poi si condivide tutto: il trucco felice è visibile e contagioso

di FRANCESCA BUSSI

IO SONO POSITIVA

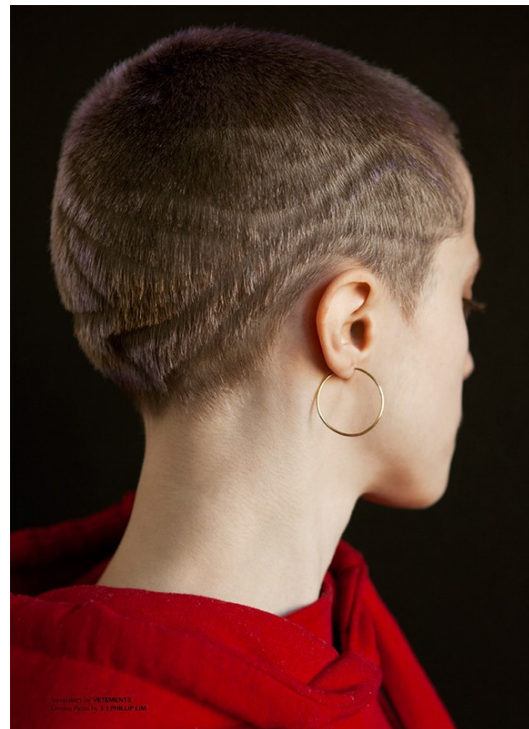
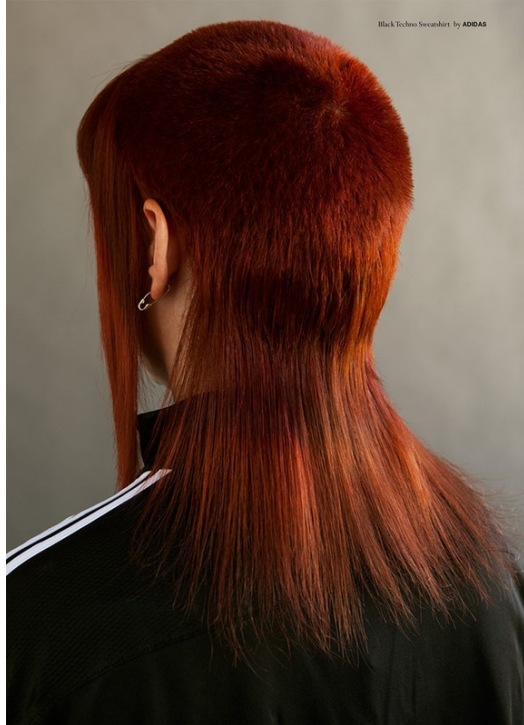
COLORI FLUIDI
Le labbra saranno
in primo piano anche
in spogio, soprattutto
per l'effetto dei nuovi
pigmenti liquidi nella
formula di Base Color
Fluo Liquid Lip Fusion
di Estée Lauder
(€ 29,90).

184 | VANITY FAIR | FOTO: JAMES HOUSTON | 05.08.2015 | 05.08.2015 | SERVIZIO: CINZIA BRANDI | VANITY FAIR | 183

Nicolas Eldin

www.art-dept.com

Art Department



Nicolas Eldin

www.art-dept.com

Art Department



Nicolas Eldin

www.art-dept.com

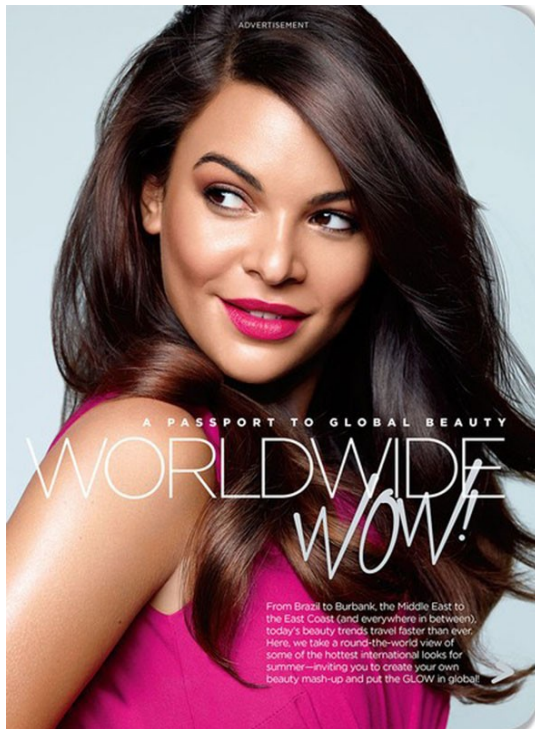
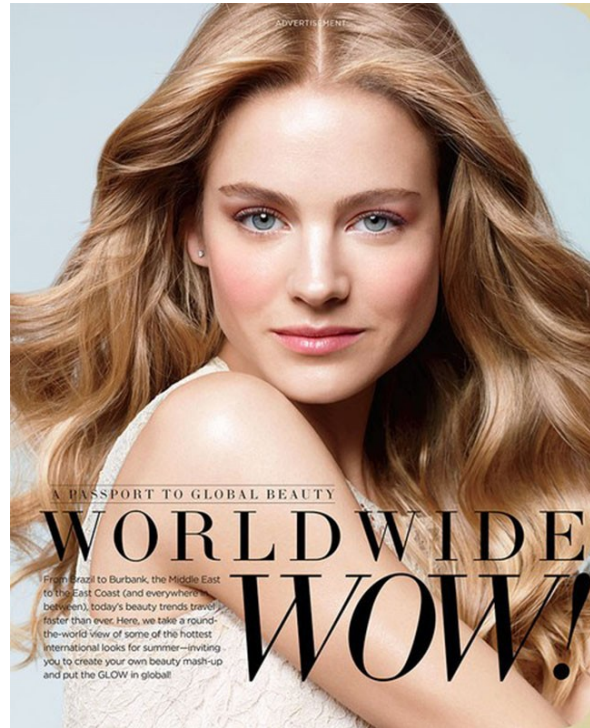
Art Department



Nicolas Eldin

www.art-dept.com

Art Department



Nicolas Eldin

www.art-dept.com

Art Department



Nicolas Eldin

www.art-dept.com

Art Department



Nicolas Eldin

www.art-dept.com