

# Art Department



Sarra Na

[www.art-dept.com](http://www.art-dept.com)

# Art Department



Sarra Na

[www.art-dept.com](http://www.art-dept.com)

# Art Department



Sarra Na

[www.art-dept.com](http://www.art-dept.com)

# Art Department



GIORGIO ARMANI White Shirt  
YVES SAINT LAURENT Thigh-Boots  
CARTIER "Love" Cuff Bracelet  
VAN CLEEF & ARPELS "Perle" Gold Cuff  
Bracelet

*Left page*  
MAISON MARTIN MARGIELA Bi-material  
Bases  
VAN CLEEF & ARPELS Collection "Perle"  
Bracelet

MAKE-UP Christophe Dauchand  
HAIR Sara Na  
DIGITAL ASSISTANT François Letourcy  
PHOTO ASSISTANT Grace Rocoffart  
FASHION ASSISTANT Julien Mazzoni

## Sarra Na

[www.art-dept.com](http://www.art-dept.com)

# Art Department



YVES SAINT LAURENT Jacket  
UNIQLO White Tee-Shirt  
UNIQLO Black Pair of Jeans  
CELINE Boots

Sarra Na

[www.art-dept.com](http://www.art-dept.com)

# Art Department



Sarra Na

[www.art-dept.com](http://www.art-dept.com)

# Art Department



Sarra Na

[www.art-dept.com](http://www.art-dept.com)

# Art Department



Sarra Na

[www.art-dept.com](http://www.art-dept.com)



# Art Department



Sarra Na

[www.art-dept.com](http://www.art-dept.com)

# Art Department



LA NOUVELLE  
**EMMANUELLE**

Après un premier album avec le groupe Ultra Orange et une série de concerts, l'actrice fait le point sur son récent virage rock. Rencontre.

**Photos:** Mike Figgis  
**à Macrocroche Photography**  
**Texte:** Olivier Wicker  
**Réalisation:** Lella Smara  
**Coiffure:** Sarra Na  
**à Art Department**  
**Maquillage:** Megumi Zlatoff  
**Production:** Julia Melikonova et Helena Vidalić  
**Assistants mode:** Jonathan Huguet et Fanny Ollier

52

Trench en coton beige. **Burberry London.**

Sarra Na

[www.art-dept.com](http://www.art-dept.com)

# Art Department



Sarra Na

[www.art-dept.com](http://www.art-dept.com)

# Art Department



Sarra Na

[www.art-dept.com](http://www.art-dept.com)

# Art Department



Élodie Bouchez

Sarra Na

[www.art-dept.com](http://www.art-dept.com)

# Art Department

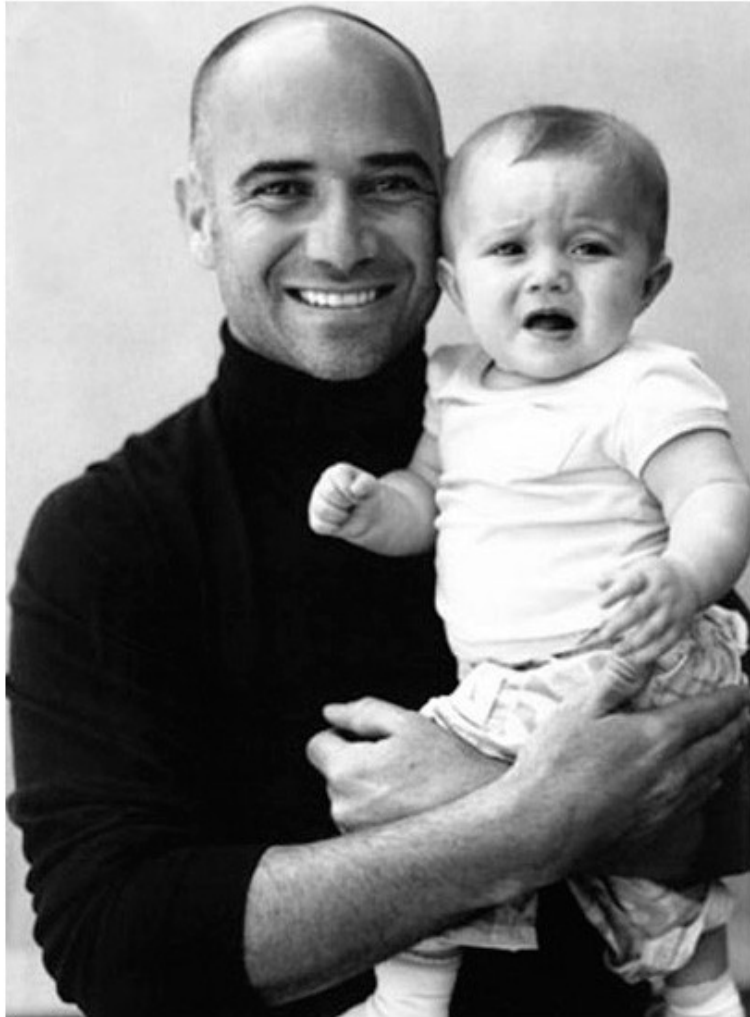


Élodie Bouchez

Sarra Na

[www.art-dept.com](http://www.art-dept.com)

# Art Department



Sarra Na

[www.art-dept.com](http://www.art-dept.com)

# Art Department



Sarra Na

[www.art-dept.com](http://www.art-dept.com)



# Art Department



Sarra Na

[www.art-dept.com](http://www.art-dept.com)

# Art Department




Sarra Na

[www.art-dept.com](http://www.art-dept.com)

# Art Department



 makeupreport

## GREEN SHEEN

Dubroff uses an intense, iridescent green for her stunning new take on a beloved beauty classic: smoky eyes. The hue ("I call it beetle shell because the shadow has a range of colors in it, including purple," she says) is heightened by a forest-green liner that Dubroff adds for extra definition. What catches Bilson's attention: "I'm into eyeliner in unusual colors for a more dramatic look."

Sarra Na

[www.art-dept.com](http://www.art-dept.com)

# Art Department



WOMAN ON OUR MIND

F

## JADE ANDERSON

**YOU RESPECT HER...** BECAUSE 21-YEAR-OLD JADE IS THE DAUGHTER OF ROCK LEGEND JON ANDERSON, THE LEAD SINGER OF YES.

**YOU LIKE HER...** BECAUSE HER R&B-INFLECTED DEBUT ALBUM, *DIVE DEEPER*, SOUNDS NOTHING LIKE HER DADDY'S MUSIC.

**So this is the first interview you've ever done. As your father might tell you: When in doubt, just say yes. What if it's a no question? Then I'll be in trouble. But OK—I'll say yes.**

**Will it be hard to distance yourself from your dad's music?**

People are going to make comparisons to my dad. But the only comparison I can truly make is that I do sometimes go off in little fantasy worlds like he does. But my dad runs with that a little farther.

**In an interview I saw relating to the *Lord of the Rings* movie, he said he's part elf. True?**

I'll just say yes.

**What is one of the stranger things he's done?**

He used to come off tour and put a tepee in the garden. He would make me, my brother and my sister go into the tepee and meditate with him. And of course, we were like, "Dad, can we just go play Nintendo, please?"

**He's got a pretty high voice. Does that run in the family?**

I think I have the higher range—although on the phone, people mistake his voice for a woman's. It's wonderful, actually. I think he's perhaps the Mariah Carey of men.

**How would you make him hip to MTV viewers again?**

The other day, he was writing a song. I said, "Dad, why not take a new approach?" Bless him, but the massive fantasy world that he goes into could be a bit far-fetched for the general listener. So he calls me back after five days and says, "Jade, I am so stuck. I can't do it this way." I said, "Dad, obviously people love your style of writing. You just carry on the way you were."

**Do you have a favorite Yes song?**

I'm not really into that type of music, to be honest. Certainly, not the hard-core-rock stuff, because when I'd go to a show I'd go to the bathroom, get something to eat and come back and the same song would still be playing.—JOHN SELLERS

## Sarra Na

www.art-dept.com

# Art Department



Sarra Na

[www.art-dept.com](http://www.art-dept.com)

# Art Department



beauty  
talk

**Scarlett Johansson**  
*Girl with a Pearl Earring*

When the producers of *Girl with a Pearl Earring* asked Scarlett Johansson the crucial question, "Do you have pierced ears?" she responded enthusiastically: "Oh, do I!" In fact, Johansson, who plays the subject of one of Vermeer's most famous paintings in the recently released film, has not one piercing but four in each ear as well as some in her eyebrow, nose and belly button. The 19-year-old actress has an equally eclectic collection of makeup. While filming *Lost in Translation* in Japan she stocked up on compact eyelash curlers and mini lipsticks. "I also got some great nail polish. It stays on for like three weeks!" ▷

GUY AROCH

99

## Sarra Na

[www.art-dept.com](http://www.art-dept.com)

# Art Department

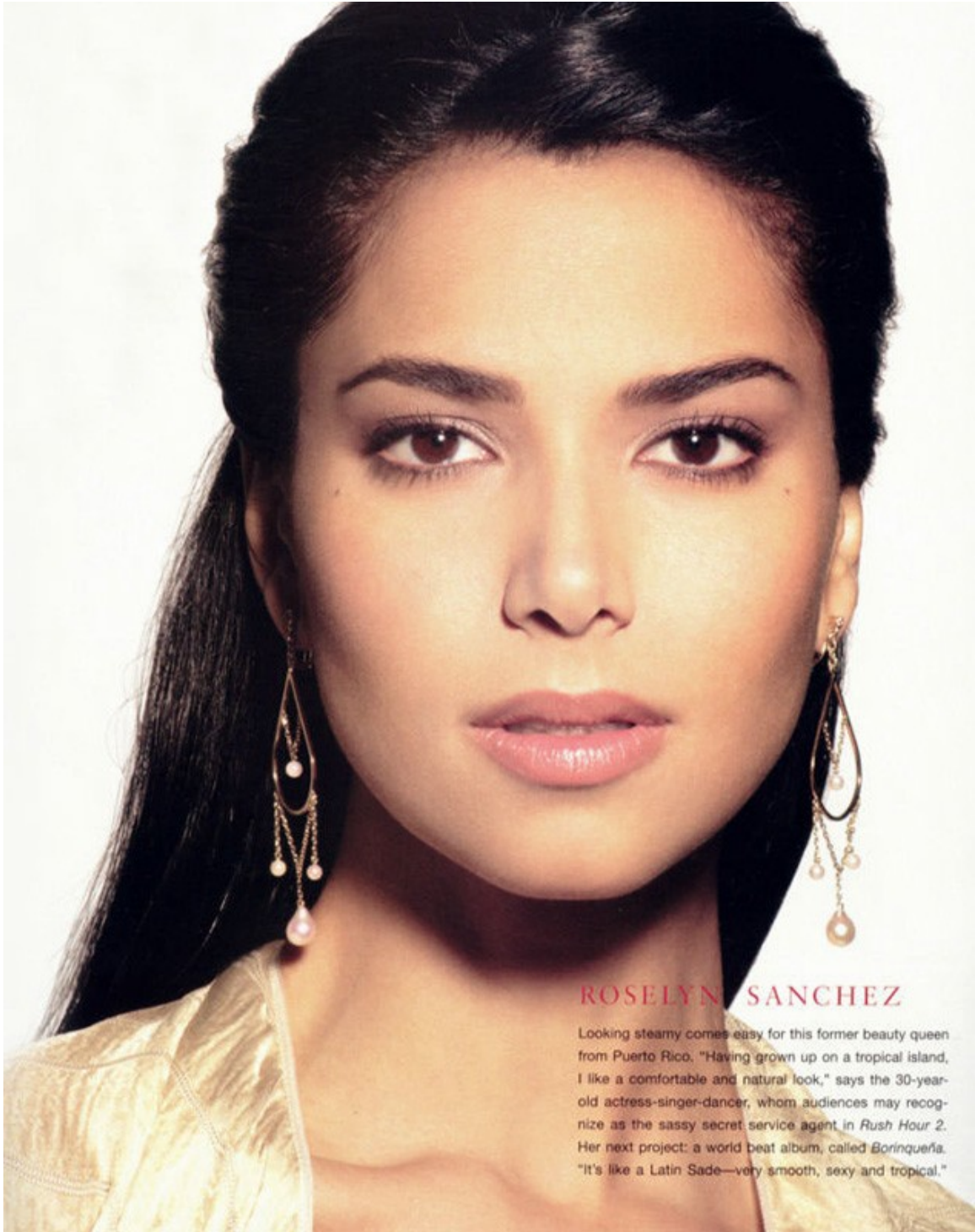
beautyreport



Sarra Na

[www.art-dept.com](http://www.art-dept.com)

# Art Department



## ROSELYN SANCHEZ

Looking steamy comes easy for this former beauty queen from Puerto Rico. "Having grown up on a tropical island, I like a comfortable and natural look," says the 30-year-old actress-singer-dancer, whom audiences may recognize as the sassy secret service agent in *Rush Hour 2*. Her next project: a world beat album, called *Borinqueña*. "It's like a Latin Sade—very smooth, sexy and tropical."

## Sarra Na

[www.art-dept.com](http://www.art-dept.com)



# Art Department



#### ◀ PRETTY COOL

Sevigny exudes an air of sophistication with understated makeup and loosely pulled-back hair. "I like it," says the actress. "It's pretty and natural."

#### ▶ POWER GLAM

Red lips and a strong, dark eye give Sevigny a dramatic edge. "This has an eighties feel," says makeup artist Brigitte Reiss-Andersen. "It's a very deliberate, fashion-forward look."

## CHLOE SEVIGNY

Growing up in Darien, Conn., actress Chloë Sevigny (*Kids*, *American Psycho* and *Boys Don't Cry*) was given a carefully circumscribed approach to beauty. "My mom never let me get a perm or bangs or anything feathered," says the 28-year-old actress, who next appears in *Shattered Glass*. "She always encouraged blush—she wanted me to look bright-eyed and bushy-tailed."

# Sarra Na

[www.art-dept.com](http://www.art-dept.com)

# Art Department



beautyreport

Sarra Na

[www.art-dept.com](http://www.art-dept.com)

# Art Department

beauty  
talk



**Shalom  
Harlow**  
*The Jury*

Shalom Harlow uses an expletive to describe her “ugly duckling” phase, which reached its apogee during a preteen night at a club called Illusions in her native Canada. Her look? “I wore an acid-washed mini, 50 million bangles, and blue, blue eye shadow,” she recalls with a cringe. Discovered at a

Cure concert when she was 16, Harlow supermodeled before becoming a successful hyphenate: After turns in *Vanilla Sky* and *How to Lose a Guy in 10 Days*, Harlow, 30, landed a role as a lawyer on the new Fox drama *The Jury*. So today, life for this New Yorker is anything but “f—ing ugly.” ▷

WOLFGANG LUDES

IN STYLE AUGUST 2004 245

## Sarra Na

[www.art-dept.com](http://www.art-dept.com)

# Art Department



Sarra Na

[www.art-dept.com](http://www.art-dept.com)

# Art Department



**InStyle**

**EXCLUSIVE**  
**Elizabeth Hurley**  
On Arun, babies & how marriage will change her life

**Fashion's best looks**  
66 irresistible shoes & bags  
42 workwear solutions  
171 key buys for spring

**'Help! I'm addicted to wrap dresses'**  
Stars' secret obsessions

instyleuk.com  
9 771472 016066 05 >

Sarra Na

www.art-dept.com

# Art Department



Sarra Na

[www.art-dept.com](http://www.art-dept.com)

# Art Department



Sarra Na

[www.art-dept.com](http://www.art-dept.com)

# Art Department



Sarra Na

[www.art-dept.com](http://www.art-dept.com)



# Art Department



Sarra Na

[www.art-dept.com](http://www.art-dept.com)

# Art Department



## EMMANUELLE SEIGNER WEIL TATSÄCHLICH DER WEG DAS ZIEL IST

**M**it dem Aussehen einer schläfrigen Raubkatze war sie lange auf den Vamp festgelegt. Emmanuelle Seigner, 41, sah ihre glamouröse Schönheit als Handicap und brauchte lange, um sich aus dem Schatten ihres Gatten und Mentors Roman Polanski zu lösen. Für das Kino wurde das Model von Jean-Luc Godard entdeckt. Er gab ihr 1985 in dem Krimi „Detektiv“ den ersten Part. Ihr späterer Mann besetzte sie daraufhin für den Thriller „Frantic“ (1988). Als Schauspielerin fühlte sie sich lange Zeit unsicher. Erst die Rolle als zerbrechlicher Popstar à la Mylène Farmer in „Backstage“ (2005) brachte die Wende. Wie befreit nahm Seigner vor kurzem das erfolgreiche Rockalbum „Ultra Orange & Emmanuelle“ auf. In Cannes war sie dann in Julian Schnabels aktuellem Film „Schmetterling und Taucherglocke“ zu sehen. Keine Frage: Die neue Courage macht sie noch erotischer.

## Sarra Na

[www.art-dept.com](http://www.art-dept.com)

# Art Department



IO

WINTER 2006

EMMANUELLE SEIGNER

PASCAL GREGGORY

JUERGEN TELLER

HERMÈS

MELKI

MASERATI

BOUCHERON

LISA YUSKAVAGE

RENZO ROSSO

BILLY WILDER

**Now Think Otherwise**

ENGLISH TEXT



## Sarra Na

[www.art-dept.com](http://www.art-dept.com)

# Art Department



Sarra Na

[www.art-dept.com](http://www.art-dept.com)

# Art Department



Sarra Na

[www.art-dept.com](http://www.art-dept.com)

# Art Department



Sarra Na

[www.art-dept.com](http://www.art-dept.com)

# Art Department



Sarra Na

[www.art-dept.com](http://www.art-dept.com)

# Art Department



**IT'S NOT EASY BEING AN INDIE QUEEN:**  
"There's just a group of girls at the top who get offered everything," says Sevigny, who wants to cross over into more mainstream fare. "They're all basically attractive, though some don't have that much talent. What is it? What do I need to get there?"

BLUE SILK SATIN DRESS WITH LACE EDGING, CHANEL

Sarra Na

[www.art-dept.com](http://www.art-dept.com)



# Art Department



## Victoria and Vanessa Traina

Photographed by Norman Jean Roy in New York City on February 5, 2005.

**Victoria:** **Residence:** San Francisco and New York City. **Occupation:** Student, Parsons School of Design. **Age:** 21. **Personal style:** "A kind of polished eclectic." **Style icon:** "My mother" (Danielle Steel). **Favorite piece of clothing:** "A white Rochas ball gown that my mother gave me." **Most stylish man:** Tom Ford. **Favorite piece of jewelry:** "A Fred Leighton tiara that I wore to my 21st birthday party." **Fashion shows you attend:** Proenza Schouler and Narciso Rodriguez in New York and the couture collections in Paris in the summer. **Favorite scent:** Poupée, by Rochas. **Favorite store:** Maxfield and Decades in Los Angeles, Chloé and Balenciaga in New York. **Favorite book:** *Valley of the Dolls* and *The Catcher in the Rye*. **Favorite cause:** The Nick Traina Foundation.

**Vanessa:** **Residence:** San Francisco and Malibu. **Occupation:** Student, Pepperdine University. **Age:** 20. **Personal style:** "Bohemian chic." **Style icon:** "My mother." **Favorite piece of clothing:** A vintage Chanel couture pink mink. **Most stylish man:** Tom Ford. **Favorite piece of jewelry:** "A pink diamond bangle Victoria gave me that is engraved with our names, and it says, 'Through all time.'" **Fashion shows you attend:** Proenza Schouler in New York and the couture collections in Paris. **Favorite scent:** Poupée, by Rochas. **Favorite store:** Decades in Los Angeles, Chloé in New York. **Favorite book:** Anything by Danielle Steel. **Favorite cause:** The Nick Traina Foundation.

STYLING: TRACY MURPHY. HAIR: FRANK THOMAS. MAKEUP: JANE ROSS. DRESS: ROCHAS. NECKLACE: DANIELLE STEEL. HEADBAND: DANIELLE STEEL. RINGS: DANIELLE STEEL. SHOES: DANIELLE STEEL. PHOTOGRAPHY: NORMAN JEAN ROY. ART DIRECTION: SARRA NA. PROP STYLING: TRACY MURPHY. PROPS STYLED BY MARY HOWARD. FOR DETAILS, SEE CREDITS PAGE.

## Sarra Na

[www.art-dept.com](http://www.art-dept.com)

# Art Department



Artist Anh Duong wears  
Marni Pendant, £125,  
Catherine Prevost

'It never goes out of fashion.  
It is an eternal classic.  
It represents elegance. You can  
never go wrong with an LBD'  
ANH DUONG

## Sarra Na

[www.art-dept.com](http://www.art-dept.com)

# Art Department



Model Eugenia Silva wears  
Roland Mouret. Beaded  
bracelet, £225, Erickson  
Beamon. Shoes, from  
£245, Tom Ford for Gucci

'The LBD is safe and  
creative, sexy and ladylike  
- everything in one piece'  
EUGENIA SILVA

## Sarra Na

[www.art-dept.com](http://www.art-dept.com)

# Art Department



sov·er·eign·ty

*-tē n, pl -ties [ME *soverainte*, fr. AF *sovereinte*; fr. *soverain*]  
1 *obs*: supreme excellence 2 *a*: supreme power esp. over a body  
politic *b*: freedom from external control*

LADY SOVEREIGN IS A HIP-HOP FIRST: WHITE, FEMALE, AND BRITISH—AND HER MUCH-ANTICIPATED ALBUM IS COMING TO AMERICA THIS SUMMER. AD-ROCK DIGS HER AND SHE'S BEEN COMPARED TO MISSY ELLIOTT. JUST DON'T CALL HER "FEMINEM."

PHOTOGRAPHED BY GILLES BENSIMON

## Sarra Na

[www.art-dept.com](http://www.art-dept.com)

# Art Department



**Left:** Wool-flannel jacket, John Galiano, \$1,040. T-shirt, Adidas Originals, \$60. Yellow-diamond dog tag, Jacob & Co., price upon request. Black-and-gold-link chain, CC Skye, \$150. **Right:** T-shirt, Par-belle. Jeans, Converse by John Varvatos, \$225. Baseball cap, Adidas Respect Me by Missy Elliott, \$20. Chain-link bracelet, CC Skye, \$250. Sneakers, Adidas Originals, \$90. Her own keys. For details, see Shopping Guide.

Sarra Na

[www.art-dept.com](http://www.art-dept.com)

# Art Department



Sarra Na

[www.art-dept.com](http://www.art-dept.com)

# Art Department



Sarra Na

[www.art-dept.com](http://www.art-dept.com)





# Art Department

## **Lou REED** **LIVE**



Sarra Na

[www.art-dept.com](http://www.art-dept.com)

# Art Department



Sarra Na

[www.art-dept.com](http://www.art-dept.com)

# Art Department



Sarra Na

[www.art-dept.com](http://www.art-dept.com)

# Art Department



Sarra Na

[www.art-dept.com](http://www.art-dept.com)

# Art Department



Sarra Na

[www.art-dept.com](http://www.art-dept.com)

# Art Department



Sarra Na

[www.art-dept.com](http://www.art-dept.com)

# Art Department



Sarra Na

[www.art-dept.com](http://www.art-dept.com)

# Art Department



Sarra Na

[www.art-dept.com](http://www.art-dept.com)