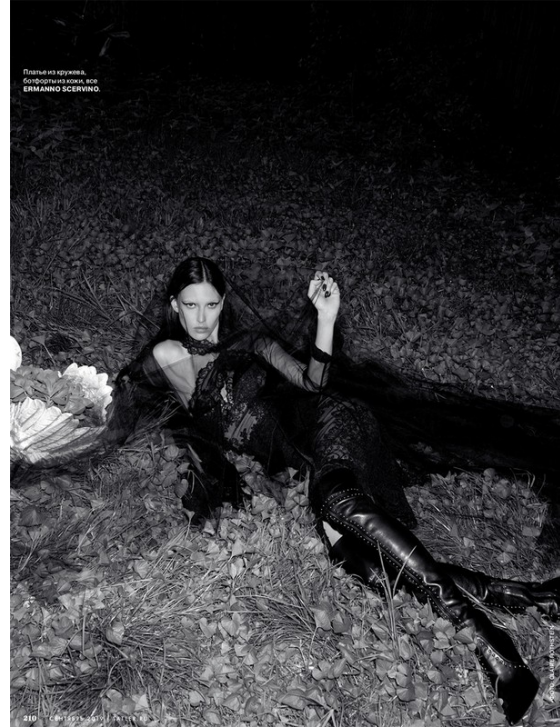


# Art Department



Chris Colbeck

[www.art-dept.com](http://www.art-dept.com)

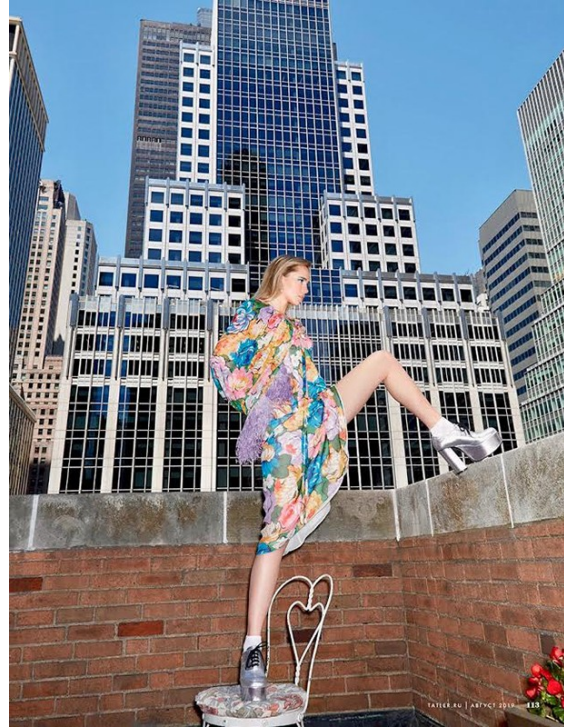
# Art Department



Chris Colbeck

[www.art-dept.com](http://www.art-dept.com)

# Art Department



## Chris Colbeck

[www.art-dept.com](http://www.art-dept.com)

# Art Department



Chris Colbeck

[www.art-dept.com](http://www.art-dept.com)

# Art Department

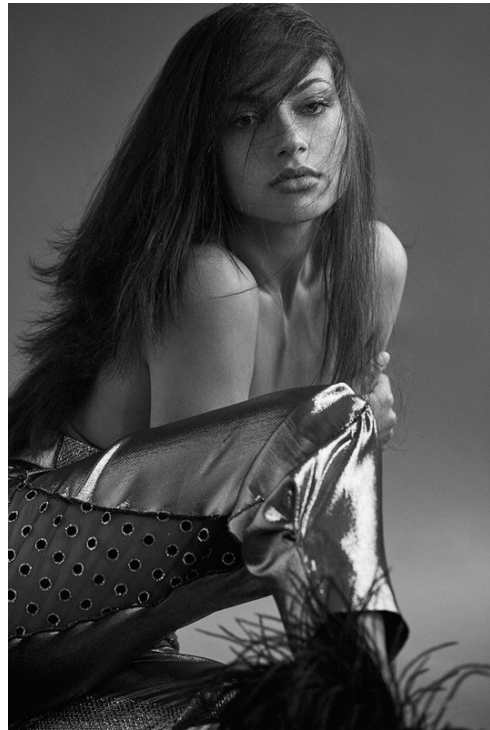


Chris Colbeck

[www.art-dept.com](http://www.art-dept.com)



# Art Department



Chris Colbeck

[www.art-dept.com](http://www.art-dept.com)

# Art Department



Chris Colbeck

[www.art-dept.com](http://www.art-dept.com)



# Art Department



Chris Colbeck

[www.art-dept.com](http://www.art-dept.com)

# Art Department



Chris Colbeck

[www.art-dept.com](http://www.art-dept.com)

# Art Department



Chris Colbeck

[www.art-dept.com](http://www.art-dept.com)

# Art Department

## working girl

Hommage au tailoring fort, celui qui fait les épaules larges et les femmes puissantes.  
Emprunt aux codes masculins, qu'il est toujours temps de rendre féminins.  
Photographe: Miki Kasch  
Styliste: Virginie D'Heck



Veste en laine et chevron en  
poudre de riz, marquée comme  
Prada. SACO & VOLTARE.  
Manif d'été. "Vest" de et rose,  
marqué comme. VERNER.

164 / AIR FRANCE MADAME



Portance en soie et  
body en jacquard, une  
grande pose. JACQUARD  
SERIAL. PRADA. Veste  
de costume en laine, marquée  
comme BRUNELLO  
SCONELLI. Manif de  
été en soie et métal, marquée  
comme GATTO  
pour BURMA. T-shirt en  
soie et laine. JIMMY CHOO.  
Drapeau en soie, marquée  
comme PRADA.  
et soie. T-shirt en jersey  
de coton, marquée  
comme PRADA. Manif de  
été en soie et métal, marquée  
comme VUITTON. Manif de  
été en soie et métal, marquée  
comme VERNER.

AIR FRANCE MADAME / 165

## Chris Colbeck

[www.art-dept.com](http://www.art-dept.com)

# Art Department



Vero, pull en laine  
et chemise en soie,  
and jacket and sweater,  
style fibres, M&S MILA

166 / AIR FRANCE MADAME



ON TALLA VON FURSTENBERG,  
CHANEL DRESS (PRICE ON REQUEST),  
MILKIA FRENCH (2017) (LAINAGE)  
ET M&S, TAYLOR SIMS, LES MILLS,  
FOR LES MILLS, LES MILLS, LES MILLS,  
Hair by Michael Sibley for  
Lorenz Group of the Wall Group  
(China), Blouse Renaissance at  
the Wall Group (Talia), Makeup  
by George London for Hair's Leader  
at Forward Berlin (Diane),  
Chris Colbeck for Chanel Beauty  
at Air Department (Talia),  
Makeup by Gina Viscusi at  
TheMediterranean, Set design  
by Creative Studios for Creative  
Studios, Studio Flowers by  
Design by Alan



ON TALLA VON FURSTENBERG,  
MICHAEL BORG COLLECTION  
DRESS (2018), TORY BURT  
ET BRACLET (2018) AND  
D&G (2018), HESTER  
PARIS (2018) AND

## Chris Colbeck

[www.art-dept.com](http://www.art-dept.com)

# Art Department

## THE CULTURE OF STYLE

ON ELLA RICHARDS: HANNI  
COAT (L&L), DRESS  
GELATI, AND SHOES  
BY J. P. BOCCALATI  
GARDNER: PRINCE OF  
HEAVEN: BOB FINE  
JEWELRY: MISS PRINCE ON  
REQUEST, MAYBELLINE TOTAL  
TRANSFORM MASCARA: GELATI  
FOR DETAILS SEE PAGE 171.

Hair by Didier Maligou. Makeup by Chris Colbeck using  
Chanel Petite Éternelle at Art Department. Nails by  
Kelly B. using Dior Vernis. Set design by Jeffrey Miller at the  
Magent Agency. Choreography by Alexandra Berger.  
Produced by Kinsey Productions. Tailoring by  
Yasmine Ozeili for Lars Nord. Location courtesy  
Maison Margiela USA. Casting by Steve Brown.



## Chris Colbeck

[www.art-dept.com](http://www.art-dept.com)

# Art Department



Chris Colbeck

[www.art-dept.com](http://www.art-dept.com)

# Art Department



## Chris Colbeck

[www.art-dept.com](http://www.art-dept.com)



# Art Department

## THE GROUP A JUSTICE LEAGUE OF DESIGNERS SEES THE FUTURE IN DOWN.

By Erik Maas  
Photograph by Victor Demarchelier  
Styled by Nicoletta Santoro

The charm was in the details. Earlier this year, Mosler staged a grand production in Milan, the sort of theater a jaded fashion crowd expects from chairman and CEO Remo Ruffini. Inside the Palazzo delle Scintille were seven towering silver tents circled by onlookers restless to see the treasures underneath, wondering if the big reveal would live up to the hype. And then flaps parted and small domains came into view, immaculately appointed cells, each brimming with creations by some of the world's most acclaimed designers, including Valentino's Pierpaolo Piccioli, the romantic Simone Rocha, Ken Nisomura (backed by Comme des Garçons) and Japanese streetwear powerhouse Hiroshi Fujiwara. They were, to use Piccioli's phrase, "a hub of inventors," a fashion Justice League convened to reinterpret the classic Moncler down jacket. "Consumers are changing radically," Ruffini said, and the Genius project meets them halfway, giving them curated drops that hit boutiques and pop-ups strategically, rather than once a season: Rocha will be out in September, followed by Piccioli in October, when a pop-up in New York will carry all the Genius collections. For the designers, Ruffini's call was a challenge. Nisomura's all-black ensembles underlined his inventive use of fabric, while Piccioli's colorful nylon capes suggested ecclesiastical astronauts. Rocha didn't shy from making a practical staple her own, embellishing her down jackets with sequin flowers and frills in feminine pinks and reds. She told F&C: "She imagined the looks on 'female Victorian mountain climbers who would bring cake and champagne with them up the mountain.' But they'll work just fine in Gstaad."



**ALL CLOTHING: MONCLER. HAIR: KIMMO. MAKEUP: GINA VINCIGUERRA. STYLING: NICOLETTA SANTORO. SET DESIGN: JIMMY CHOO.**

06

07

TOWARDSCENTRAL.COM

06

07

TOWARDSCENTRAL.COM



Manteau en denim, *Denim coat*, BALENCIAGA. Baskets "Sk8-Hi" en toile, *canvas sneakers*, VANS. Collier "Manette" en or jaune, *gold necklace*, SPALLANZANI. MILANO 1980. Brosche d'ossettes "Bambino" en métal doré, *gold metal chest brooch*, K&F. CRO pour BURMA. Page de droite, *opposite page*: veste en laine et soie, *parablen en denim et cuir*, "Saddle" en nylon et laina, *wool and silk jacket*, denim trousers, *nylon and faux fur*, DIOR. Bandana en soie, *silk bandana*, HERMÈS. Baskets en toile, *canvas sneakers*, CONVERSE. Collier et broche d'ossettes en or jaune, *gold necklace and brooch*, *gold and diamond ring*, SPALLANZANI. MILANO 1980. Brosche vintage 80's en or jaune, *vintage gold brooch*, COLLECTOR SQUARE. Manchettes "Manette" en or jaune, *gold cuff bracelet*, DINH VAN.



## Chris Colbeck

www.art-dept.com



# Art Department



## Chris Colbeck

[www.art-dept.com](http://www.art-dept.com)



# Art Department



Chris Colbeck

[www.art-dept.com](http://www.art-dept.com)



# Art Department



Chris Colbeck

www.art-dept.com

# Art Department



Chris Colbeck

[www.art-dept.com](http://www.art-dept.com)



# Art Department



Chris Colbeck

[www.art-dept.com](http://www.art-dept.com)

# Art Department



Chris Colbeck

[www.art-dept.com](http://www.art-dept.com)

# Art Department



Chris Colbeck

[www.art-dept.com](http://www.art-dept.com)

# Art Department



Chris Colbeck

[www.art-dept.com](http://www.art-dept.com)





# Art Department



Chris Colbeck

[www.art-dept.com](http://www.art-dept.com)

# Art Department



*Hair by Didier Malige  
 Makeup by Chris Colbeck  
 Hair: Chanel Le Bonnes  
 Fluid: Marciano by Proenza  
 Simmons using Chanel  
 Le Vernis. Set design by  
 North Westhoff Studio.*

**PAINTED LADY**  
 Patterns and prints are now  
 seasonless. Marni dress  
 (\$2,300) and fur stole  
 (\$3,590); LaCraine gloves  
 (\$300); Mokuba belt (price  
 on request); Marni earrings  
 (top, \$525; bottom, \$400).  
 For details see page 156.

**GET THE LOOK**  
 To get into an Edward  
 Hopper-inspired frame of  
 mind, makeup artist Chris  
 Colbeck drew from the  
 painter's work and the recent  
 fashion collections. "New  
 realism is the zeitgeist for fall/  
 winter," he says. Here, that  
 translates into a muted  
 copper palette using Chanel  
 Les 4 Ombres eye shadow in  
 Spaces and Joues Contraste  
 blush in Fardango.

JUNE/JULY 2014 | 85

## BETWEEN THE LINES

MUTED PALETTES, FUR TRIM, LOOSELY CINCHED WAISTS: AN ARTFUL INTERPRETATION OF THE PRE-FALL COLLECTIONS REVEALS THE SHAPE OF THINGS TO COME.

PHOTOGRAPHS BY PAUL WETHERELL



**SHARDED AREAS**  
 Pink, a color once reserved  
 for dolls and little girls,  
 has matured (pinkish-  
 black).  
 Neck: Bore (dress, \$4,700);  
 Colbeck; Celine; fur  
 bag (\$2,500); Mokuba  
 belt (price on request);  
 Fred Topf earrings  
 (price on request).  
 Styled by Nicoletta Santoro

JUNE/JULY 2014 | 127

## Chris Colbeck

www.art-dept.com



# Art Department

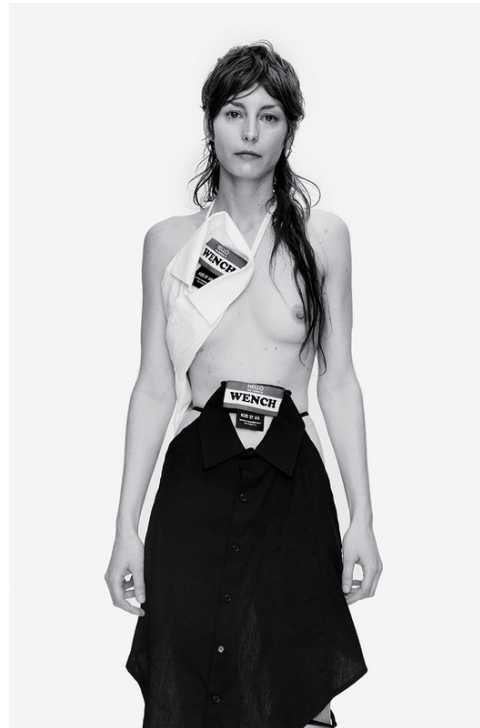


Chris Colbeck

[www.art-dept.com](http://www.art-dept.com)



# Art Department



Chris Colbeck

[www.art-dept.com](http://www.art-dept.com)

# Art Department



Chris Colbeck

www.art-dept.com



# Art Department



Chris Colbeck

[www.art-dept.com](http://www.art-dept.com)

# Art Department



Chris Colbeck

[www.art-dept.com](http://www.art-dept.com)

# Art Department



Chris Colbeck

[www.art-dept.com](http://www.art-dept.com)



# Art Department



Chris Colbeck

[www.art-dept.com](http://www.art-dept.com)

# Art Department



Chris Colbeck

[www.art-dept.com](http://www.art-dept.com)

# Art Department



Chris Colbeck

[www.art-dept.com](http://www.art-dept.com)

# Art Department



146



“I LIKE THE CONTRAST BETWEEN THE SLIM-FITTING AND SOFT-FLOWING LINES IN THIS LOOK, AND ITS SOPHISTICATED 1920s RIGOUR.”

GIORGIO ARMANI  
EMPORIO ARMANI

145



151



**Therese** Satin corset, \$54. LaPerla. Shyness bra, \$76. Hervé Lévy. Nylon mix knicker, £235. Lip Martini. Feather headpiece, price on request. Louis Vuitton.

**Oppelle** Beaded silk mix dress, price on request. Offshoot. Patent leather shoes, £45. Tods.

267

## Chris Colbeck

[www.art-dept.com](http://www.art-dept.com)





# Art Department



Chris Colbeck

[www.art-dept.com](http://www.art-dept.com)

# Art Department



Chris Colbeck

[www.art-dept.com](http://www.art-dept.com)



# Art Department



Chris Colbeck

[www.art-dept.com](http://www.art-dept.com)



# Art Department



Chris Colbeck

[www.art-dept.com](http://www.art-dept.com)

# Art Department



Chris Colbeck

[www.art-dept.com](http://www.art-dept.com)

# Art Department



Chris Colbeck

[www.art-dept.com](http://www.art-dept.com)



# Art Department



Chris Colbeck

[www.art-dept.com](http://www.art-dept.com)

# Art Department



Hair by Dennis Dwyer at White Room BE using Kenralex. Makeup by Chris Colbeck at Art Department using Chanel Les Baiges. Manicure by Barbara Noveck for Bellagio Nevada. Tailoring by Maria Del Cero at Les Nord. Casting by Arianna Prodanelli at WMA Entertainment. Produced by Nathalia Akija at Kravitz Productions.

NOVEMBER 2011 127 [www.artdept.com](http://www.artdept.com)



Little children are still the symbol of the eternal marriage between love and duty.  
—George Eliot

NOVEMBER 2011 128 [www.artdept.com](http://www.artdept.com)

## Chris Colbeck

[www.art-dept.com](http://www.art-dept.com)



# Art Department



## Chris Colbeck

[www.art-dept.com](http://www.art-dept.com)







# Art Department



Chris Colbeck

[www.art-dept.com](http://www.art-dept.com)

# Art Department



Chris Colbeck

[www.art-dept.com](http://www.art-dept.com)

# Art Department



Chris Colbeck

[www.art-dept.com](http://www.art-dept.com)

# Art Department



Chris Colbeck

[www.art-dept.com](http://www.art-dept.com)



# Art Department



**В Д В И Ж Е Н И И**

ЯРКИЕ КУРТКИ,  
**КОРОТКИЕ ТОПЫ,**  
АСИММЕТРИЧНЫЕ КУПАЛЬНИКИ  
И ВЫСОКИЕ КРОССОВКИ  
ТРЕБУЮТ СПОРТИВНОЙ ФИГУРЫ  
**И БОДРОГО НАСТРОЕНИЯ.**  
НА СТАРТ, ВНИМАНИЕ, МАРШ!

Фото: DAVID BELLEMERE  
Стили: KATERINA ZOLOTOTRUBOVA

Платье: BRUNO MAGLI и CO.  
Куртка: FERRAGAMO  
Топ: FERRAGAMO  
Сандалы: FERRAGAMO  
Кроссовки: FERRAGAMO  
Сумка: FERRAGAMO

Chris Colbeck

[www.art-dept.com](http://www.art-dept.com)

# Art Department



Chris Colbeck

[www.art-dept.com](http://www.art-dept.com)

# Art Department



Chris Colbeck

[www.art-dept.com](http://www.art-dept.com)

# Art Department



Chris Colbeck

[www.art-dept.com](http://www.art-dept.com)

# Art Department



Chris Colbeck

[www.art-dept.com](http://www.art-dept.com)