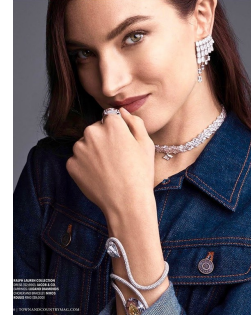
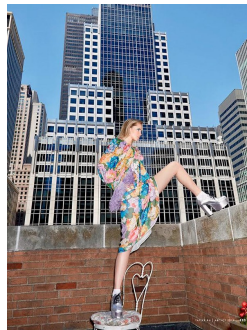
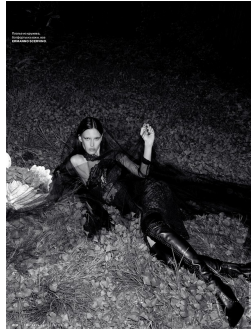


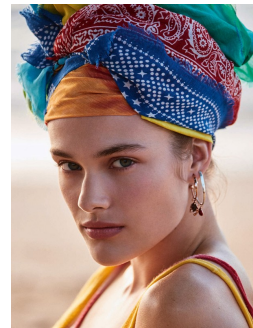
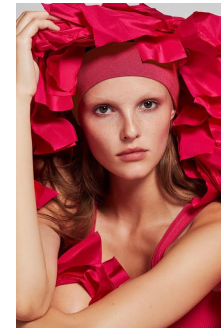
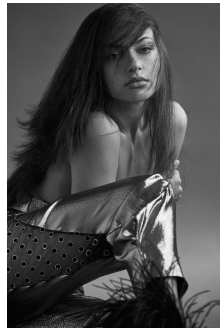
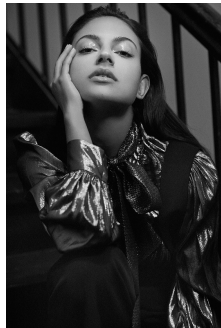
# Art Department



Chris Colbeck

[www.art-dept.com](http://www.art-dept.com)

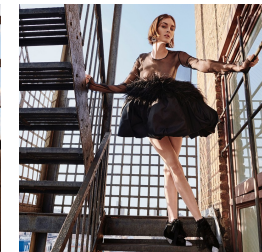
# Art Department



Chris Colbeck

[www.art-dept.com](http://www.art-dept.com)

# Art Department



Chris Colbeck

[www.art-dept.com](http://www.art-dept.com)

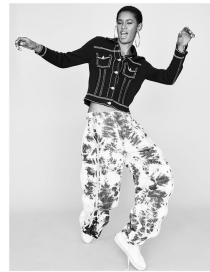
# Art Department



**THE GROUP**  
**JUSTICE LEAGUE OF DESIGNERS SEES THE FUTURE IN DOWN.**

By [unreadable]  
Photography by [unreadable]

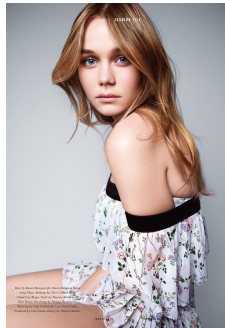
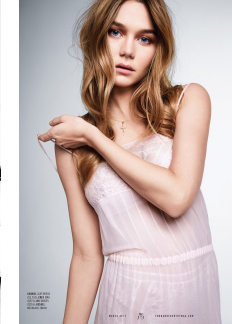
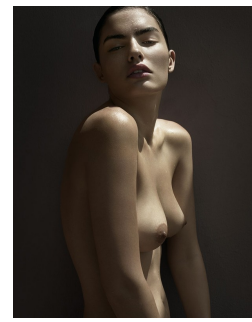
**T**he future may be dark, but the fashion industry is not. In a world where climate change is a real and present danger, designers are looking for ways to create sustainable, ethical, and socially responsible clothing. This is the mission of the Justice League of Designers, a group of fashion designers who are committed to making a positive impact on the world through their work.



## Chris Colbeck

[www.art-dept.com](http://www.art-dept.com)

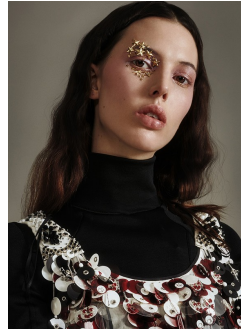
# Art Department



Chris Colbeck

[www.art-dept.com](http://www.art-dept.com)

# Art Department



Chris Colbeck

[www.art-dept.com](http://www.art-dept.com)

# Art Department



**PAINTED LIPS**  
The new collection is a bold, artistic interpretation of the pre-fall collections. It features a mix of textures, colors, and patterns, creating a look that is both sophisticated and edgy. The collection is inspired by the vibrant colors and textures of the natural world, and is designed to be a statement piece for the season.

## BETWEEN THE LINES

HATED TRIBUTES FOR YOUNG LOOSELY CINCHED WAISTS: AN ARTFUL INTERPRETATION OF THE PRE-FALL COLLECTIONS REVEALS THE SHAPE OF THINGS TO COME.

PHOTOGRAPHS BY PAUL MITCHELL



**RESIDENT MISCHIEF**  
SAILOR BRINKLEY-COOK TAKES FALL'S CASUAL LUXURY OUT FOR A JOYRIDE.

## Chris Colbeck

[www.art-dept.com](http://www.art-dept.com)

# Art Department

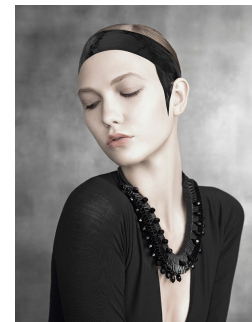
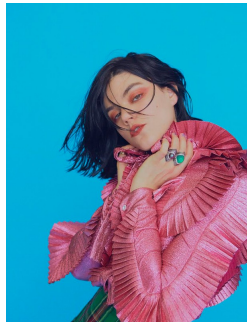


Chris Colbeck

[www.art-dept.com](http://www.art-dept.com)



# Art Department



Chris Colbeck

[www.art-dept.com](http://www.art-dept.com)

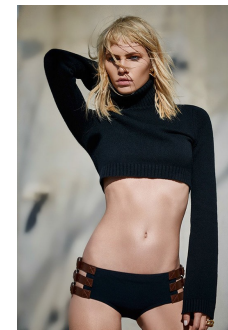
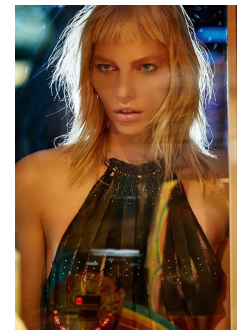
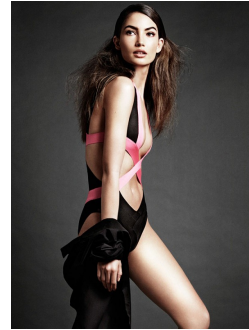
# Art Department



Chris Colbeck

[www.art-dept.com](http://www.art-dept.com)

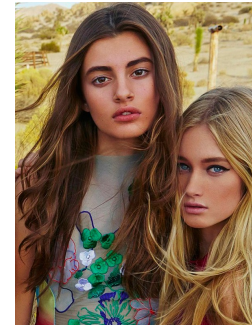
# Art Department



Chris Colbeck

[www.art-dept.com](http://www.art-dept.com)

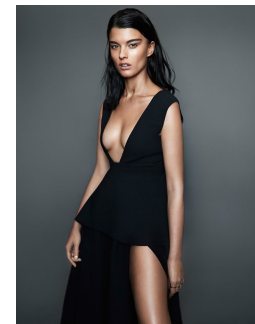
# Art Department



Chris Colbeck

[www.art-dept.com](http://www.art-dept.com)

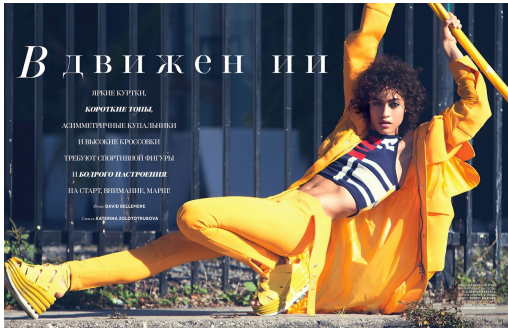
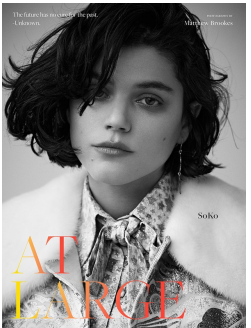
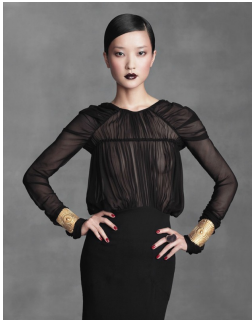
# Art Department



Chris Colbeck

[www.art-dept.com](http://www.art-dept.com)

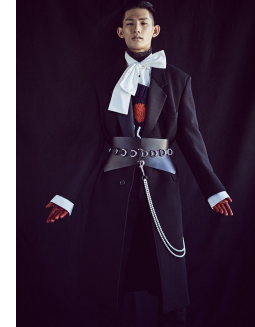
# Art Department



Chris Colbeck

[www.art-dept.com](http://www.art-dept.com)

# Art Department



Chris Colbeck

[www.art-dept.com](http://www.art-dept.com)