

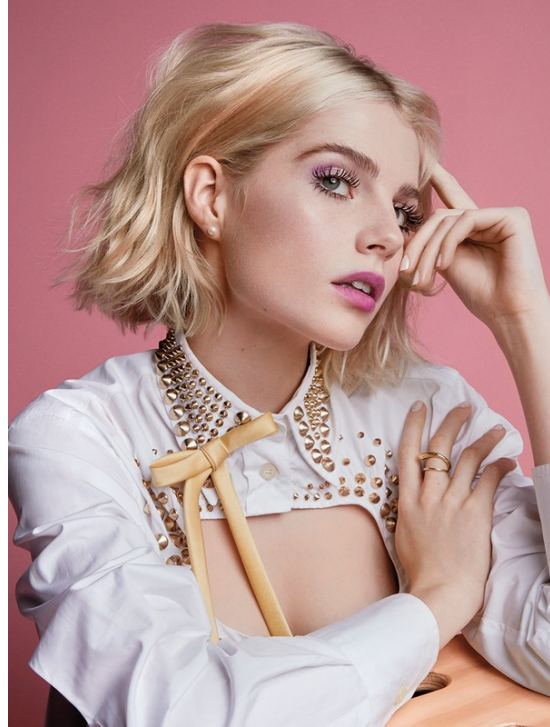
Art Department



Alison Edmond

www.art-dept.com

Art Department



Alison Edmond

www.art-dept.com

Art Department



Alison Edmond

www.art-dept.com

Art Department



Alison Edmond

www.art-dept.com

Art Department



Alison Edmond

www.art-dept.com

Art Department



Alison Edmond

www.art-dept.com

Art Department



Alison Edmond

www.art-dept.com

Art Department



Alison Edmond

www.art-dept.com

Art Department



In the arid dreamscape of Vasquez Rocks, Rosie Huntington-Whiteley talks California living and why she's becoming a beauty magnate

Words by ELIZABETH DAY Photography by ZOIE GROSSMAN Creative & Fashion Direction by ALISON EDMOND
120 WGNMCC.COM



Alison Edmond

www.art-dept.com

Art Department



Alison Edmond

www.art-dept.com

Art Department



Alison Edmond

www.art-dept.com

Art Department



Alison Edmond

www.art-dept.com

Art Department



Alison Edmond

www.art-dept.com

Art Department



Alison Edmond

www.art-dept.com

Art Department



Alison Edmond

www.art-dept.com

Art Department



Alison Edmond

www.art-dept.com

Art Department



Alison Edmond

www.art-dept.com

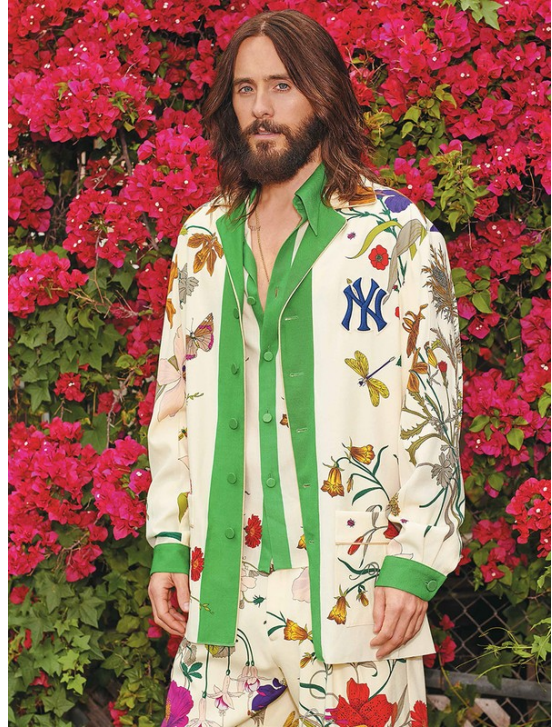
Art Department



Alison Edmond

www.art-dept.com

Art Department



Alison Edmond

www.art-dept.com

Art Department



Alison Edmond

www.art-dept.com

Art Department



WITH THEIR STARS IN THE ASCENDANT, KENYA KINSKI-JONES AND WILL PELTZ ARE TWO OF HOLLYWOOD'S FRESHEST TALENTS. WATCH THESE FACES

Pretty Things

PHOTOGRAPHY BY CARTER SMITH
STYLING BY ALISON EDMOND
WRITTEN BY ELIZABETH VARNELL

Alison Edmond

www.art-dept.com

Art Department



Alison Edmond

www.art-dept.com

Art Department



Alison Edmond

www.art-dept.com

Art Department



Alison Edmond

www.art-dept.com

Art Department



Alison Edmond

www.art-dept.com

Art Department



Alison Edmond

www.art-dept.com

Art Department



Alison Edmond

www.art-dept.com

Art Department



Alison Edmond

www.art-dept.com

Art Department



Alison Edmond

www.art-dept.com

Art Department



Alison Edmond

www.art-dept.com

Art Department



Alison Edmond

www.art-dept.com

Art Department



Alison Edmond

www.art-dept.com

Art Department



Alison Edmond

www.art-dept.com

Art Department



Alison Edmond

www.art-dept.com

Art Department



Alison Edmond

www.art-dept.com

Art Department



Alison Edmond

www.art-dept.com

Art Department



Alison Edmond

www.art-dept.com

Art Department



Alison Edmond

www.art-dept.com

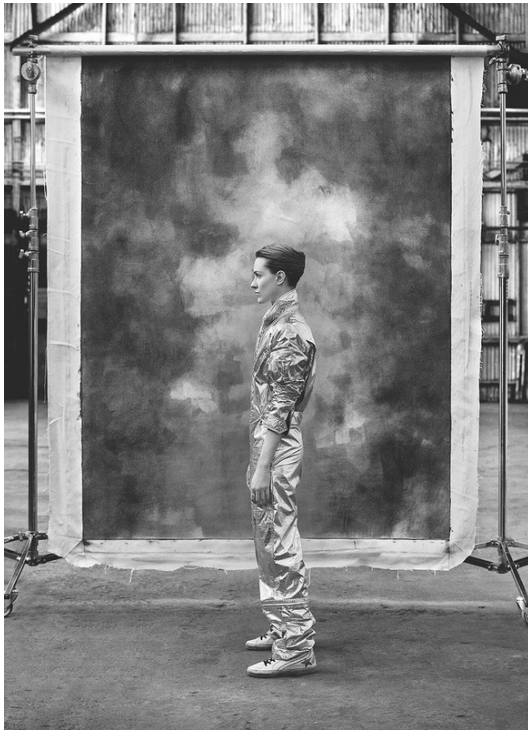
Art Department



Alison Edmond

www.art-dept.com

Art Department



Alison Edmond

www.art-dept.com

Art Department



Alison Edmond

www.art-dept.com

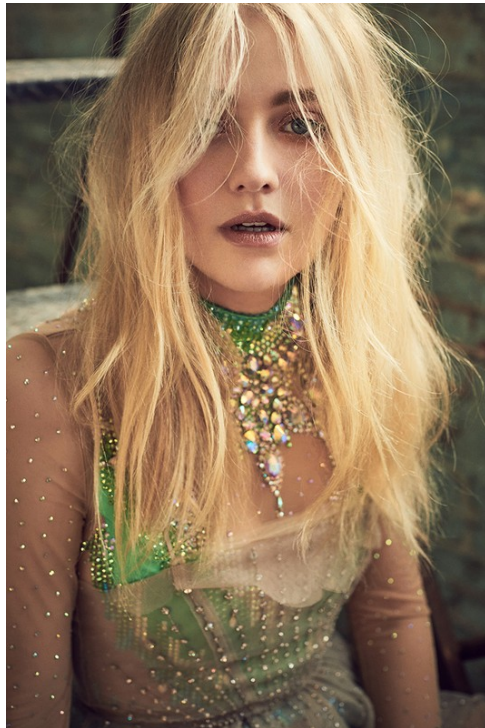
Art Department



Alison Edmond

www.art-dept.com

Art Department



Alison Edmond

www.art-dept.com

Art Department



Alison Edmond

www.art-dept.com

Art Department



Alison Edmond

www.art-dept.com

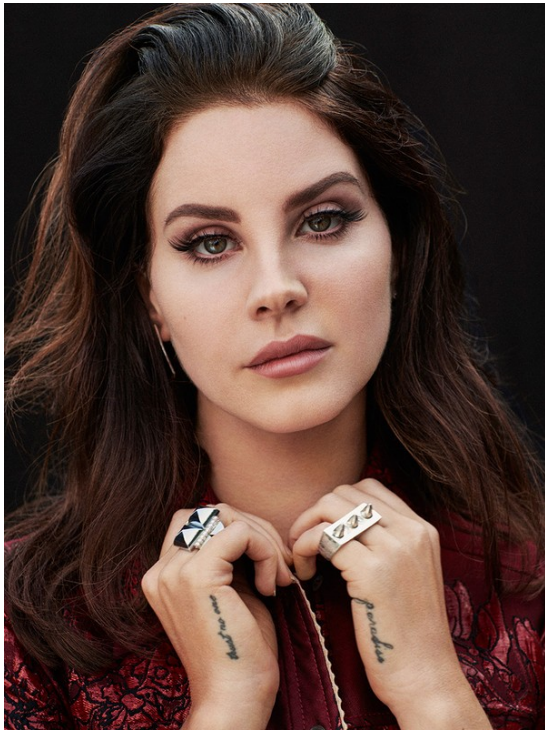
Art Department



Alison Edmond

www.art-dept.com

Art Department



Alison Edmond

www.art-dept.com

Art Department



Alison Edmond

www.art-dept.com

Art Department



Alison Edmond

www.art-dept.com

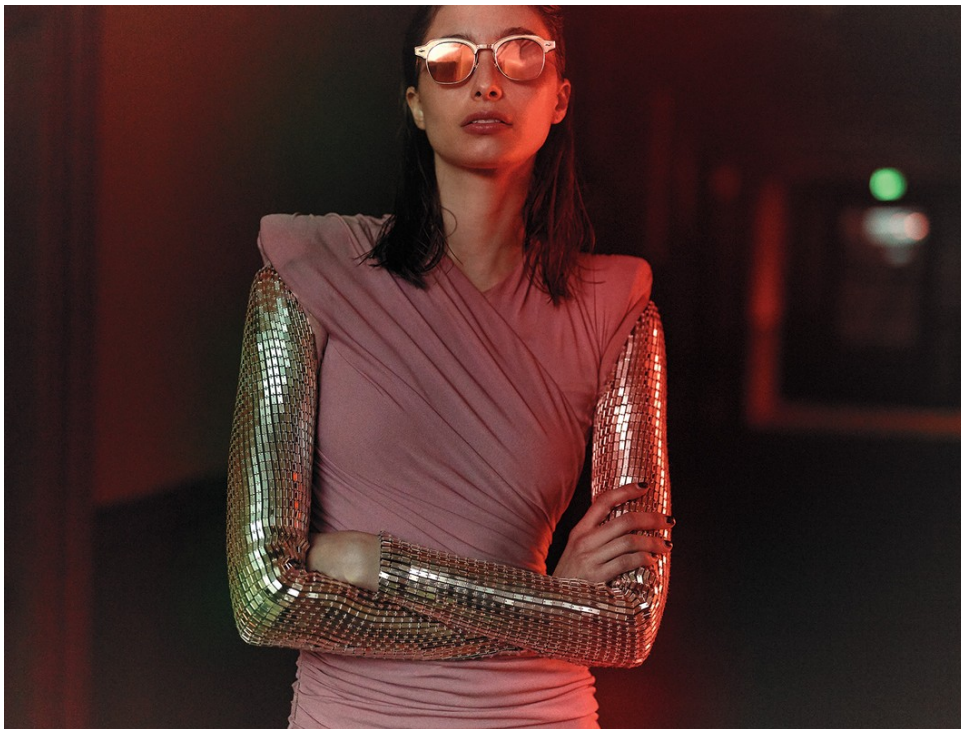
Art Department



Alison Edmond

www.art-dept.com

Art Department



Alison Edmond

www.art-dept.com

Art Department



Alison Edmond

www.art-dept.com

Art Department



Alison Edmond

www.art-dept.com

Art Department



Alison Edmond

www.art-dept.com

Art Department



Alison Edmond

www.art-dept.com

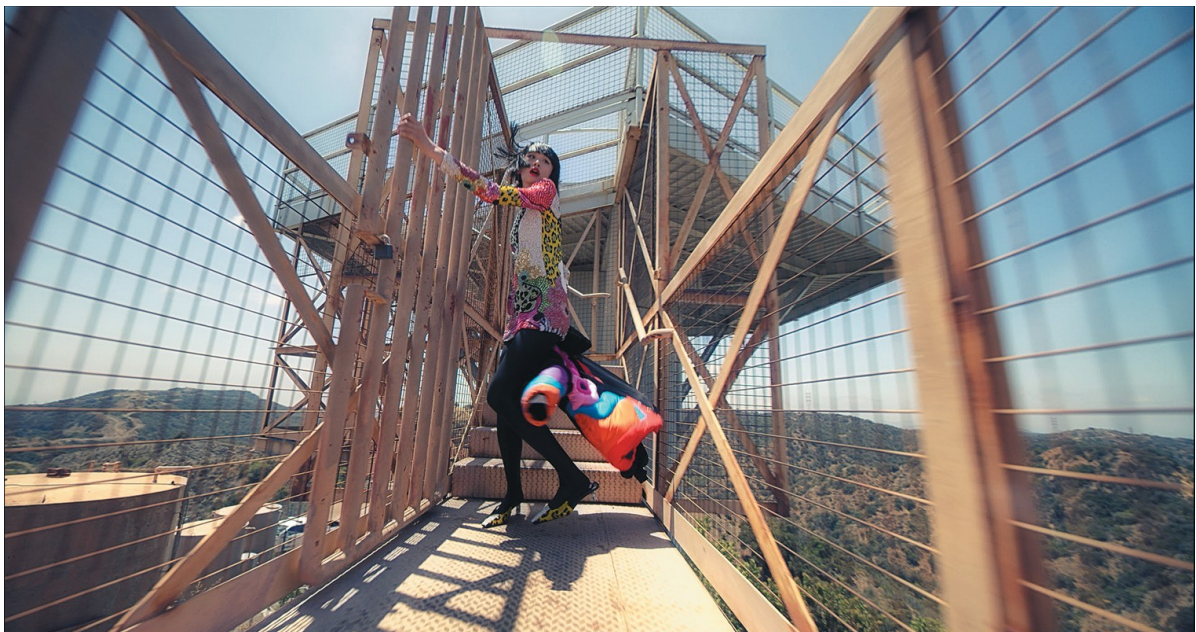
Art Department



Alison Edmond

www.art-dept.com

Art Department



Alison Edmond

www.art-dept.com

Art Department



Alison Edmond

www.art-dept.com

Art Department



Alison Edmond

www.art-dept.com

Art Department



Alison Edmond

www.art-dept.com

Art Department



Alison Edmond

www.art-dept.com

Art Department



Alison Edmond

www.art-dept.com

Art Department



Alison Edmond

www.art-dept.com

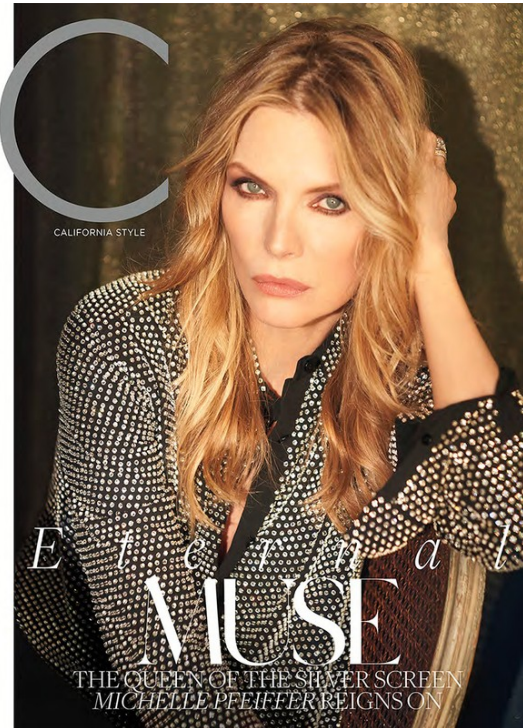
Art Department



Alison Edmond

www.art-dept.com

Art Department



Gold Standard

After trading Hollywood for a slower pace in Northern California, *Michelle Pfeiffer* makes a dazzling *big-screen* comeback

PHOTOGRAPHY BY KURT ISWARIENKO
STYLING BY ALISON EDMOND
WRITTEN BY CHRISTINE LENNON



Alison Edmond

www.art-dept.com

Art Department



Alison Edmond

www.art-dept.com

Art Department



Alison Edmond

www.art-dept.com

Art Department



Alison Edmond

www.art-dept.com

Art Department



Finding New Ground

For Rodarte designers Kate and Laura Mulleavy's first feature film, it was only natural that they tapped their best friend *Kirsten Dunst* for the starring role—but they say she's actually the *only person* who could have played the part. *C* sat down with the trio to recap their collaboration on *Woodshock*, which was set deep within an *old-growth forest* in Northern California

PHOTOGRAPHY BY KURT ISWARIENKO
STYLING BY ALISON EDMOND
WRITTEN BY KELSEY MCKINNON

Alison Edmond

www.art-dept.com

Art Department



Alison Edmond

www.art-dept.com

Art Department



Alison Edmond

www.art-dept.com

Art Department



Rising
Hollywood
ingenue *Eiza
González*
showcases
the season's
*megawatt
gems and
bombshell
hair*

Portrait *of a* LADY

PHOTOGRAPHY BY ALISTAIR TAYLOR-YOUNG
STYLING BY ALISON EDMOND
HAIR BY CHRIS McMILLAN



CARTIER ring (from left), price upon request and \$44,400, and bracelet,
price upon request. TOP'S blouse, \$500.

Alison Edmond

www.art-dept.com

Art Department



Alison Edmond

www.art-dept.com

Art Department



Alison Edmond

www.art-dept.com

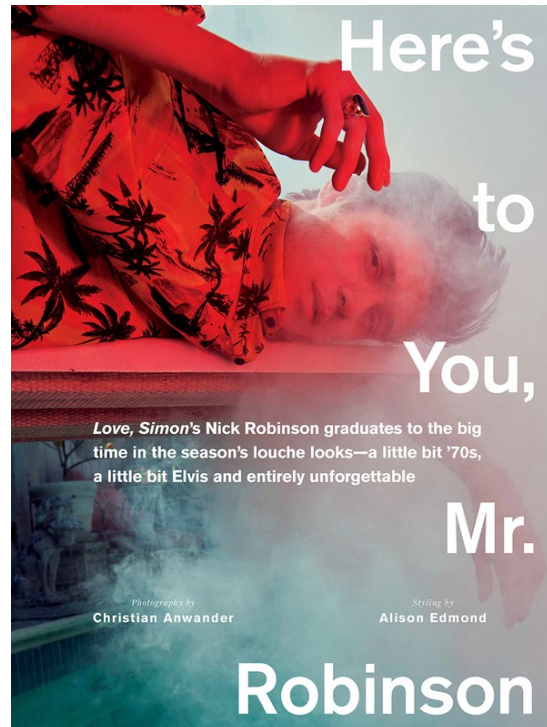
Art Department



Alison Edmond

www.art-dept.com

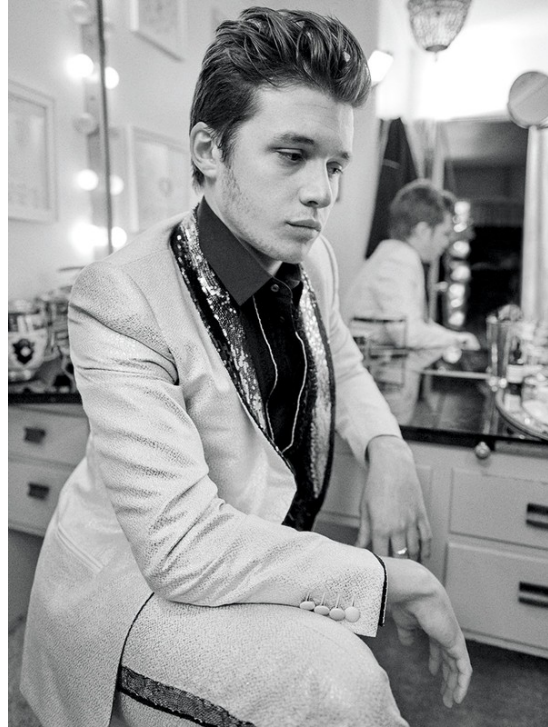
Art Department



Alison Edmond

www.art-dept.com

Art Department



Alison Edmond

www.art-dept.com

Art Department



Alison Edmond

www.art-dept.com

Art Department



Alison Edmond

www.art-dept.com

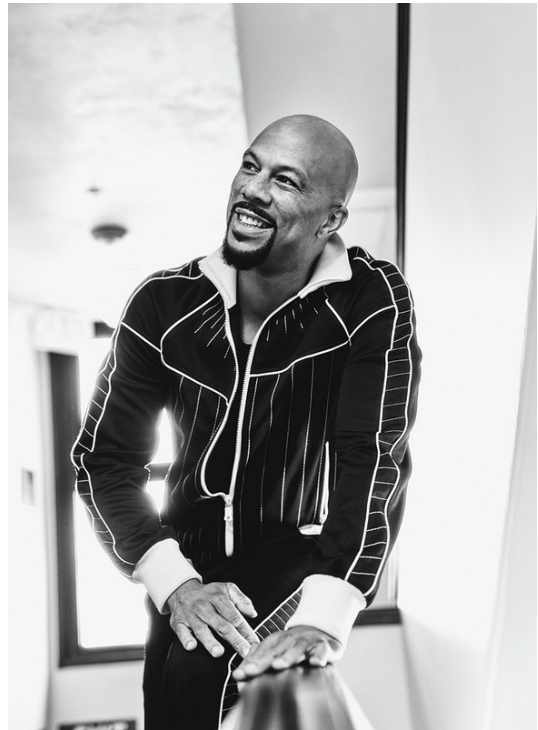
Art Department



Alison Edmond

www.art-dept.com

Art Department



Alison Edmond

www.art-dept.com

Art Department



AGAINST TYPE

He may look like the stereotypical guy's guy, but **Garrett Hedlund's** life, on screen and off, is all in the subtleties

Photography by

Kurt Markus

Styling by

Alison Edmond

Written by

Christine Lennon

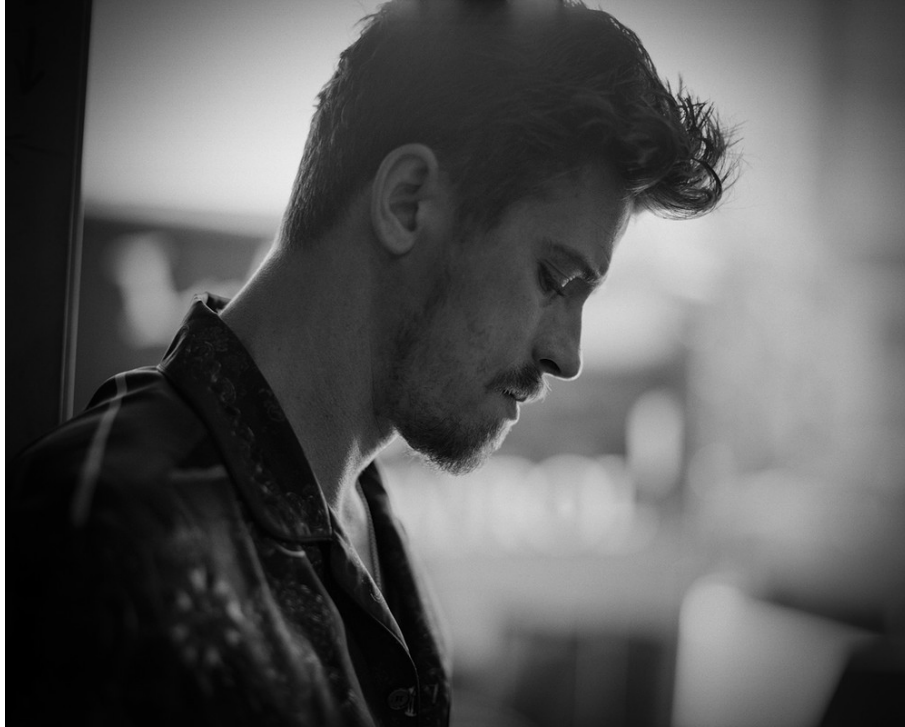
BEARD: JACOB; BELT: MICHAEL JONES; TRATS: 5140; BOOTS: MASON; T-SHIRT: BOB; DRESS: TURMAN; RING: GREEN; THROUGHOUT: BOSS.



Alison Edmond

www.art-dept.com

Art Department



Alison Edmond

www.art-dept.com

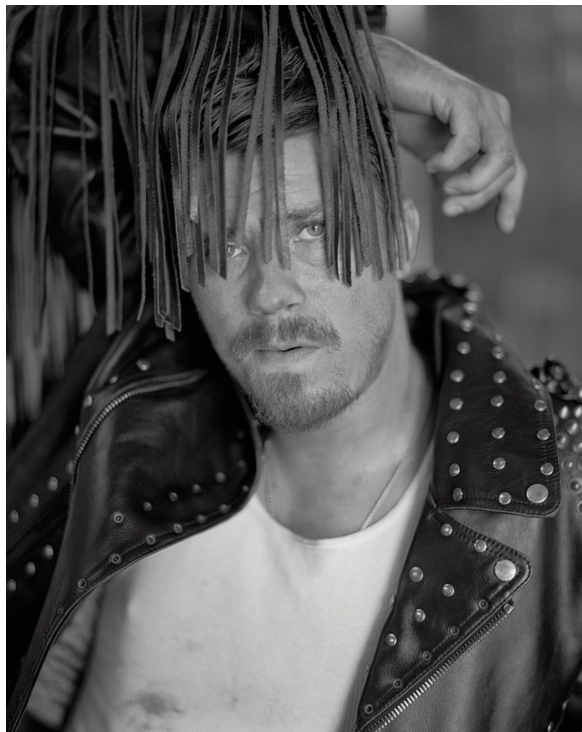
Art Department



Alison Edmond

www.art-dept.com

Art Department



Alison Edmond

www.art-dept.com

Art Department

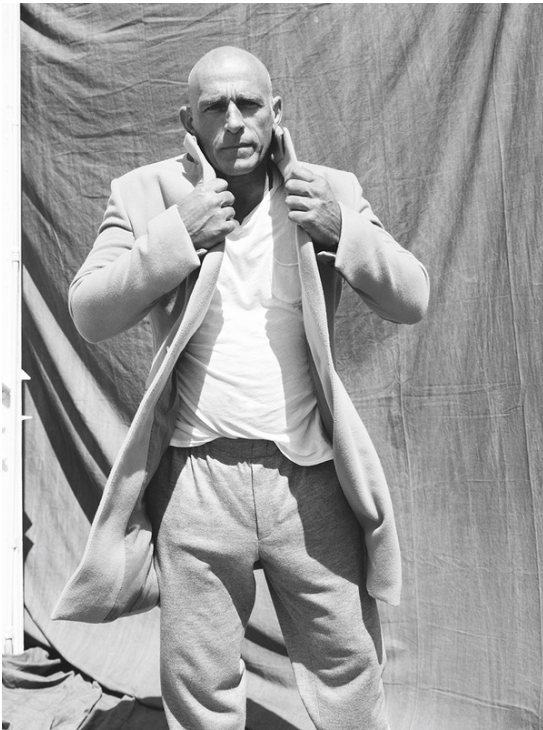
THE ORIGINALS

Six pioneers of the modeling industry prove they only get better with age

Photography by
Beau Greal
Styling by
Alison Edmond
Written by
Lindzi Scharf

◆ In a world where being a male model is seemingly now a rite of passage for any photogenic guy with a social media brand to build, it's easy to forget that back in the '60s and '70s, such a career path was viewed as taboo—and the exclusive domain of women. However, the six gentlemen on these pages, gathered together at The Hollywood Roosevelt hotel by John Pearson (widely regarded as "the world's first male supermodel"), helped to break the mold and

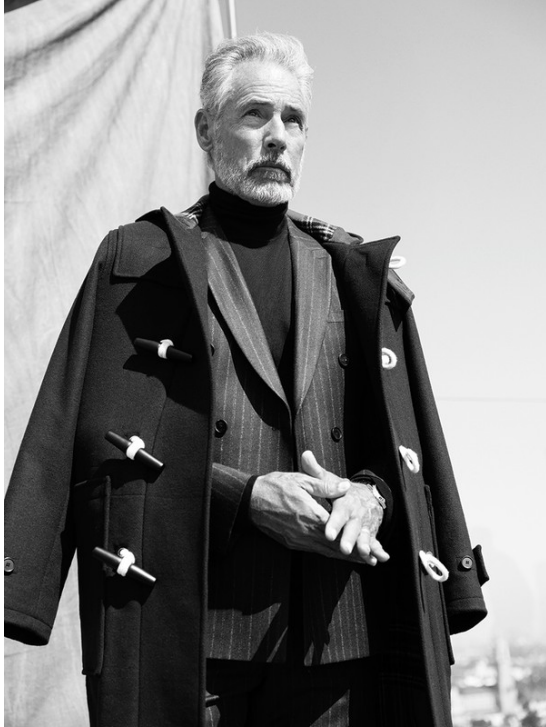
change the clichéd view of men in the industry. Proving they still have what it takes, the longtime friends and collaborators—Pearson, Olivier Dehry, Hoyt Richards, Moose Ali Khan, Bruce Hulse and Cameron Albanian—offer today's up-and-coming a lesson in wearing well. "We've got this fundamental history in a business that has changed rapidly," Pearson says. Adds Khan: "The hair is a little grayer, but the sparkle in everyone's eyes, the humility and the charm is the same."



Alison Edmond

www.art-dept.com

Art Department



Alison Edmond

www.art-dept.com

Art Department



Alison Edmond

www.art-dept.com

Art Department



Alison Edmond

www.art-dept.com

Art Department



Alison Edmond

www.art-dept.com

Art Department



Alison Edmond

www.art-dept.com

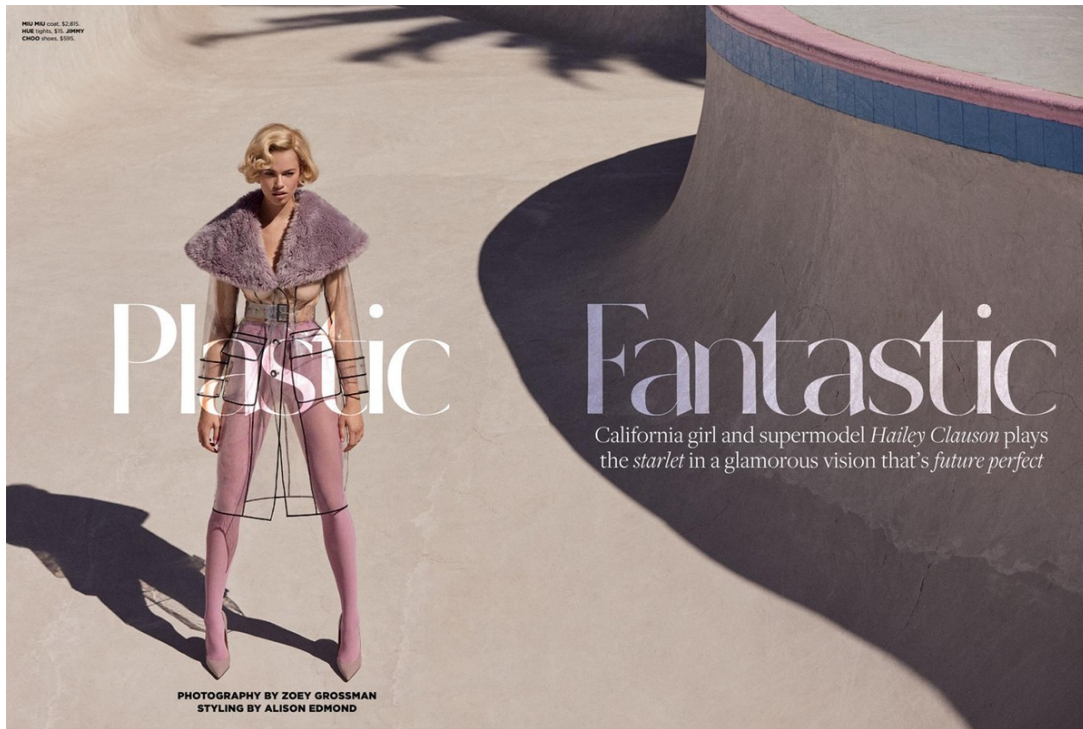
Art Department



Alison Edmond

www.art-dept.com

Art Department



Alison Edmond

www.art-dept.com

Art Department



Alison Edmond

www.art-dept.com

Art Department



Alison Edmond

www.art-dept.com

Art Department



Alison Edmond

www.art-dept.com

Art Department



Alison Edmond

www.art-dept.com

Art Department



Alison Edmond

www.art-dept.com

Art Department



Alison Edmond

www.art-dept.com

Art Department



Alison Edmond

www.art-dept.com

Art Department



Bird of Paradise

Captured in SANTA BARBARA'S fantastical LOTUSLAND, otherworldly superhero ZOÉ SALDANA comes DOWN TO EARTH

Photography by KURT MARKUS
Styling by ALISON EDMOND
Written by CHRISTINE LENNON

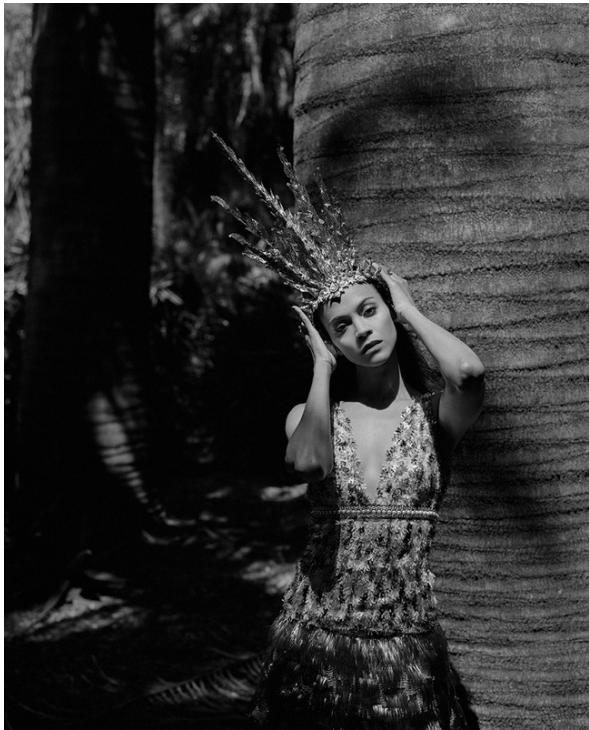


VALENTINO (top, \$1,995)
STACE BARRELL (ring, \$1,400, Wedding band throughout, Saldana's own)

Alison Edmond

www.art-dept.com

Art Department



Alison Edmond

www.art-dept.com

Art Department



Alison Edmond

www.art-dept.com

Art Department



Alison Edmond

www.art-dept.com

Art Department



Suiting Up

Taking on an
ICONIC role
and making it her
own, *Baywatch*
star KELLY
ROHRBACH
blends strength,
STYLE and sex
APPEAL

Photography by ZOEY GROSSMAN Styling by ALISON EDMOND
Written by CHRISTINE LENNON

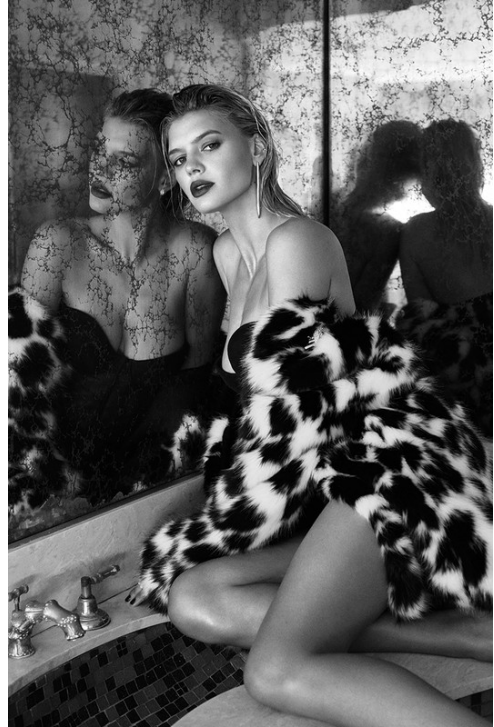


HUGO BOSS jumpsuit, price
upon request; ALEXANDRA
JONES suit (left), \$4,900;
pant, top, \$1,500;
and ring, \$1,500; and
panty ring, \$1,500; and
panty ring, \$1,500

Alison Edmond

www.art-dept.com

Art Department



Alison Edmond

www.art-dept.com

Art Department



Alison Edmond

www.art-dept.com

Art Department

Actor SOFIA BOUTELLA shows her SOFT SIDE in this season's delicate GEMS and petal-hued GOWNS

Romancing *the* Stone



Photography by MONA KUHN Styled by ALISON EDMOND



Alison Edmond

www.art-dept.com

Art Department



Alison Edmond

www.art-dept.com

Art Department



Alison Edmond

www.art-dept.com

Art Department

LEAPS & BOUNDS

Captured in Joshua Tree through the lens of his artist wife, Sam, actor **Aaron Taylor-Johnson** is pulling all the right moves, **on screen and off**

Photography by
Sam Taylor-Johnson
Styling by
Alison Edmond
Written by
Degen Pencer

60



Alison Edmond

www.art-dept.com

Art Department



Alison Edmond

www.art-dept.com

Art Department



Alison Edmond

www.art-dept.com

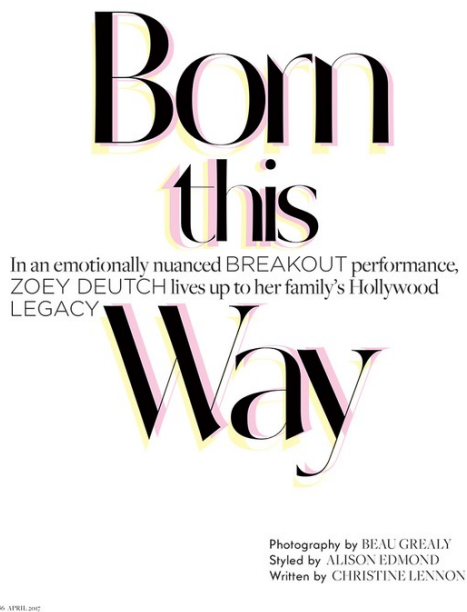
Art Department



Alison Edmond

www.art-dept.com

Art Department



Alison Edmond

www.art-dept.com

Art Department



Alison Edmond

www.art-dept.com

Art Department



Alison Edmond

www.art-dept.com

Art Department



Alison Edmond

www.art-dept.com

Art Department

SMOKE SHOW

In a mix of
loung-ready
suits and slippers,
actor **Boyd
Holbrook**
kicks back in
high style

Photography by
Kurt Iswarlenko
Styling by
Alison Edmond



Alison Edmond

www.art-dept.com

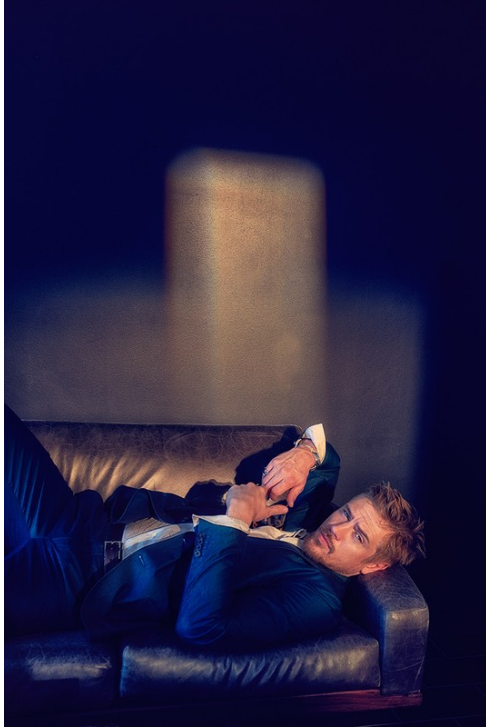
Art Department



Alison Edmond

www.art-dept.com

Art Department



Alison Edmond

www.art-dept.com

Art Department



Alison Edmond

www.art-dept.com

Art Department



Alison Edmond

www.art-dept.com

Art Department



Alison Edmond

www.art-dept.com

Art Department



Alison Edmond

www.art-dept.com

Art Department

Heat

LAIS RIBEIRO embodies the steamier side of fashion's LATIN INFLUENCES in this SEASON'S sexiest frills and flounces

WAVE

Photography by KURT MARKUS
Styling by ALISON EDMOND



MU MU LUTING top, \$890;
bottom, \$220; and skirt, \$2,200;
KENNALL CONRAD earrings,
\$120; KIM STAFFORD ring, \$865.



Alison Edmond

www.art-dept.com

Art Department



Alison Edmond

www.art-dept.com

Art Department



Alison Edmond

www.art-dept.com

Art Department



Alison Edmond

www.art-dept.com

Art Department



Really ROSIE



Alison Edmond

Art Department



Alison Edmond

www.art-dept.com

Art Department



Alison Edmond

www.art-dept.com

Art Department



Alison Edmond

www.art-dept.com

Art Department



Elle

With a HANDFUL of anticipated films on the docket, ELLE FANNING has quietly worked her way into the HOLLYWOOD BIG LEAGUE while seamlessly stepping into her MOST SIGNIFICANT ROLE YET: adulthood

Photography by BEAU GREALY
Styling by ALISON EDMOND
Written by CHRISTINE LENNON



Enchanted

CHANEL dress, \$10,000
Hugoboss hat, \$1,500
JULIA CLARKE (hat), \$250

Alison Edmond

www.art-dept.com

Art Department



Alison Edmond

www.art-dept.com

Art Department



Alison Edmond

www.art-dept.com

Art Department



Pacific TIME

Photography by KURT ISWARIENKO
Editing by ALISON EDMOND

LEGENDARY

Photography by KURT ISWARIENKO
Styling by ALISON EDMOND

LEGENDARY
model ELAINE
IRWIN takes
the road
less traveled
in SPRING'S
NEW collections—
showcasing the
best to come
in MINIMAL and
MONOCHROME
FASHION

RALPH LAUREN COLLECTION jacket, \$2,690, shirt, \$850, pants, \$3,490, belt, \$595, and necklace, price upon request. **AMERICAN APPAREL** tank, \$15. **ALL SAINTS** hat, similar styles available.



Alison Edmond

www.art-dept.com

Art Department



Alison Edmond

www.art-dept.com

Art Department



Alison Edmond

www.art-dept.com

Art Department



Alison Edmond

www.art-dept.com

Art Department



Alison Edmond

www.art-dept.com

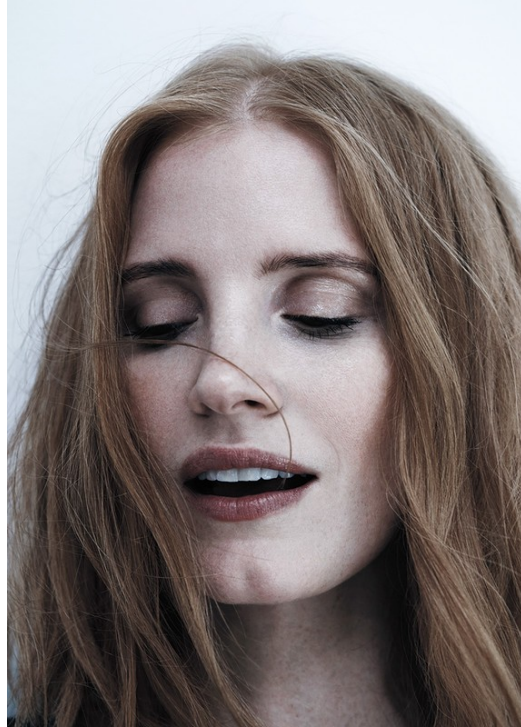
Art Department



Alison Edmond

www.art-dept.com

Art Department



Glam
As EARLY-'80S PUNK INFLUENCES re-emerge on the
FASHION scene, JEWELERS rise to the occasion with BOLD
DESIGNS to match
Rocks
Photography by CHRISTIAN ANWANDER
Styling by ALISON EDMOND

C 194 NOVEMBER 2005



BUCCELLATI earrings,
\$20,000; watch,
\$10,000; necklace,
diamonds, \$22,000;
diamond and \$45,000;
GUCCI dress, \$14,500.

Alison Edmond

www.art-dept.com

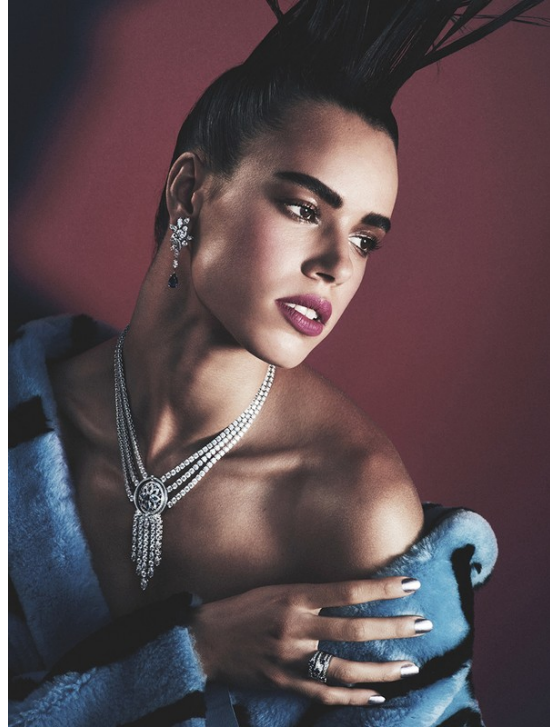
Art Department



Alison Edmond

www.art-dept.com

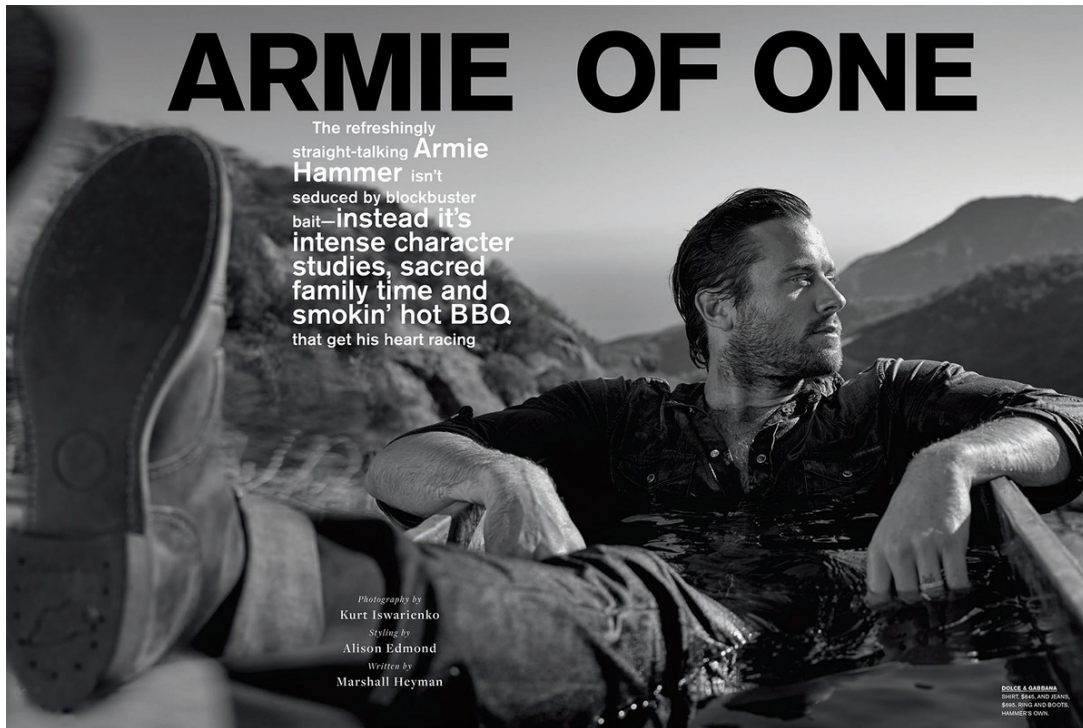
Art Department



Alison Edmond

www.art-dept.com

Art Department



Alison Edmond

www.art-dept.com

Art Department



Alison Edmond

www.art-dept.com

Art Department



Alison Edmond

www.art-dept.com

Art Department



Alison Edmond

www.art-dept.com

Art Department



Alison Edmond

www.art-dept.com