

Art Department



Bobette Cohn

www.art-dept.com

Art Department



Риза, изцяло металик и вълнени
туид панталони 4SDesigns. Ръкавици
Thom Browne. Комбинация от колан и
малка чантичка Boss

Bobette Cohn

www.art-dept.com

Art Department



Bobette Cohn

www.art-dept.com

Art Department



Вълнено палто Boss. Мохерен пуловер от акрил, риза и принт памучен панталон Tommy Hilfiger. Гумени ботуши Hunter

Bobette Cohn

www.art-dept.com

Art Department



Вълнен шал Tommy
Hilfiger. Плетен пуловер и
вратовръзка Boss

Bobette Cohn

www.art-dept.com

Art Department



Кашмирени костюм от туид, вълнена
жилетка и пуловер Kolor. Тишърт
Nanro. Кожени ботуши Frye

Фотограф: Regan Cameron
Модел: David Koch @One Management FASHION
Стилист: Bobette Cohn
Лайфстайл: Marcelino
@L'Atelier NYC с Living Proof
Асистент фотограф: Shinobu Mochizuki,
Alfredo Fernandez
Дигитална обработка: Chrissy Connors
Продукция: W.I.B. Agency
Асистент стилист: Ornella Oorti

Bobette Cohn

www.art-dept.com

Art Department



Bobette Cohn

www.art-dept.com

Art Department



Bobette Cohn

www.art-dept.com

Art Department



Bobette Cohn

www.art-dept.com

Art Department



Bobette Cohn

www.art-dept.com

Art Department



Bobette Cohn

www.art-dept.com

Art Department



Bobette Cohn

www.art-dept.com

Art Department



Bobette Cohn

www.art-dept.com

Art Department



Bobette Cohn

www.art-dept.com

Art Department



Bobette Cohn

www.art-dept.com

Art Department



Bobette Cohn

www.art-dept.com

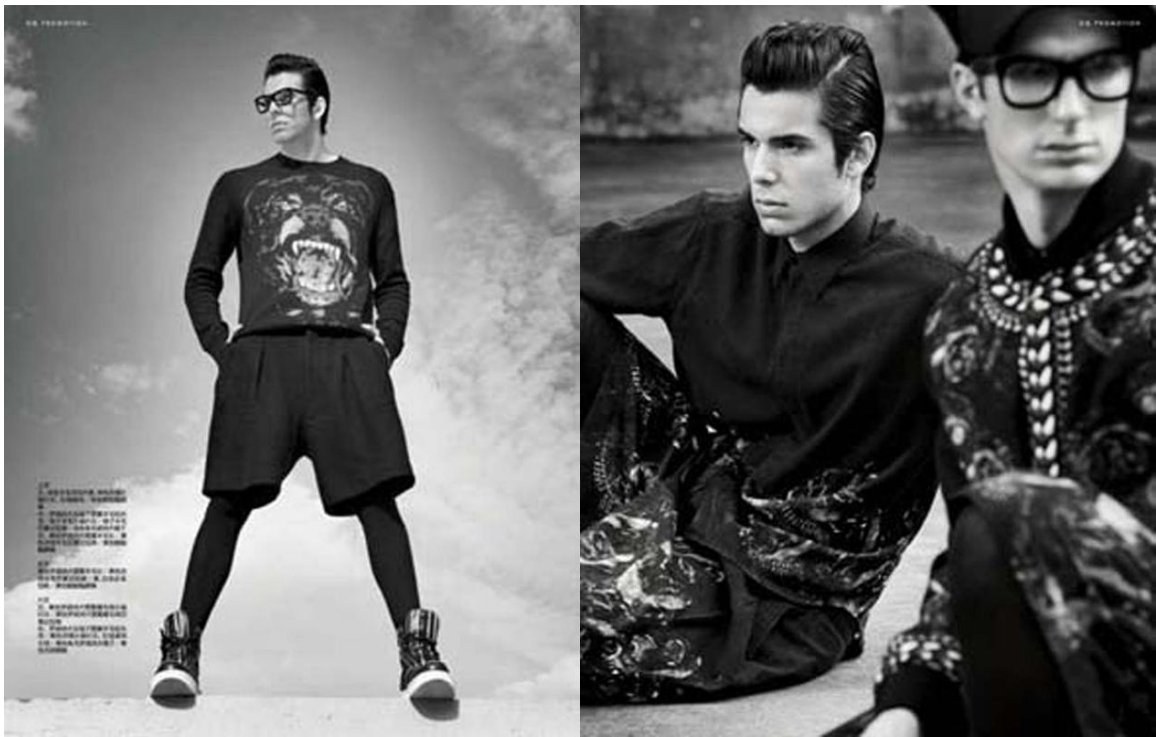
Art Department



Bobette Cohn

www.art-dept.com

Art Department



Bobette Cohn

www.art-dept.com

Art Department



Bobette Cohn

www.art-dept.com

Art Department



Bobette Cohn

www.art-dept.com

Art Department



Bobette Cohn

www.art-dept.com

Art Department



Bobette Cohn

www.art-dept.com

Art Department

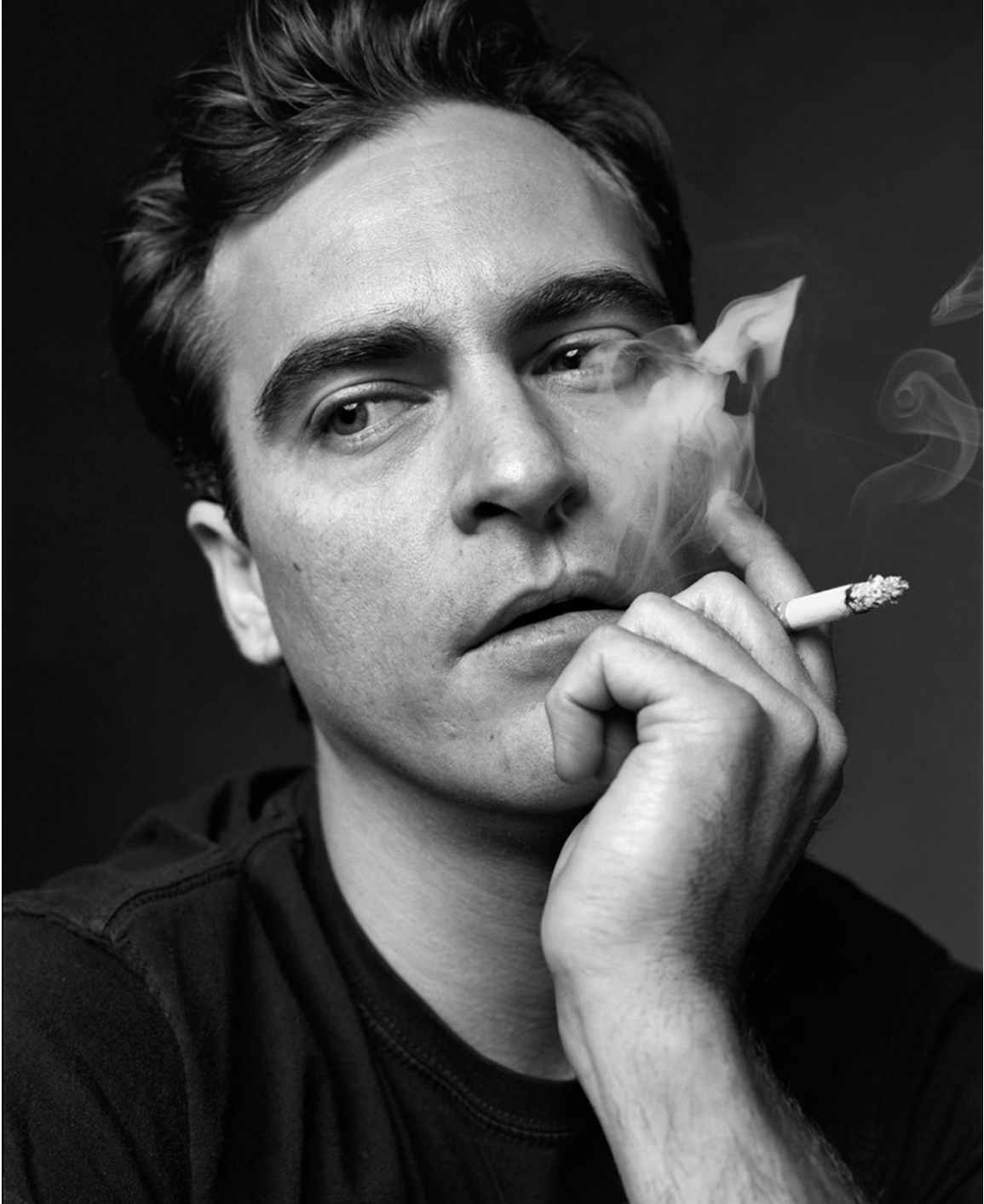


GIACCA DI VELLUTO E PANTALONI
DA SMOKING, TUTTO DIOBIO
ARMAS, CANOTA TURNBULL &
ASSER, SOU TIE BRIONI-SCIARPA
SALVATORE FERRAGAMO, YOCKEY,
IL AQUASCUTUM, SCARPE LOUIS
VUITTON, IN APERTURA, ELAZER
DI VELLUTO E SCARPE DI CAMEL
SCIO, TUTTO SALVATORE FERRA-
GAMO, Camicia, EMMEGUELDIO
ZEONE, PANTALONI GUCCI, PO-
CHETTE GIEVES & HAWKES, CON
TUTTA WOOD-ROSS BLACK, GROOM-
INGO ALEX D'ARDEUX E GEMMA
SMITH, HANNO COLLABORATO
ERIC DOWN E SARAH CRITTINI,
FASHION EDITOR BOBETTE COHN.

Bobette Cohn

www.art-dept.com

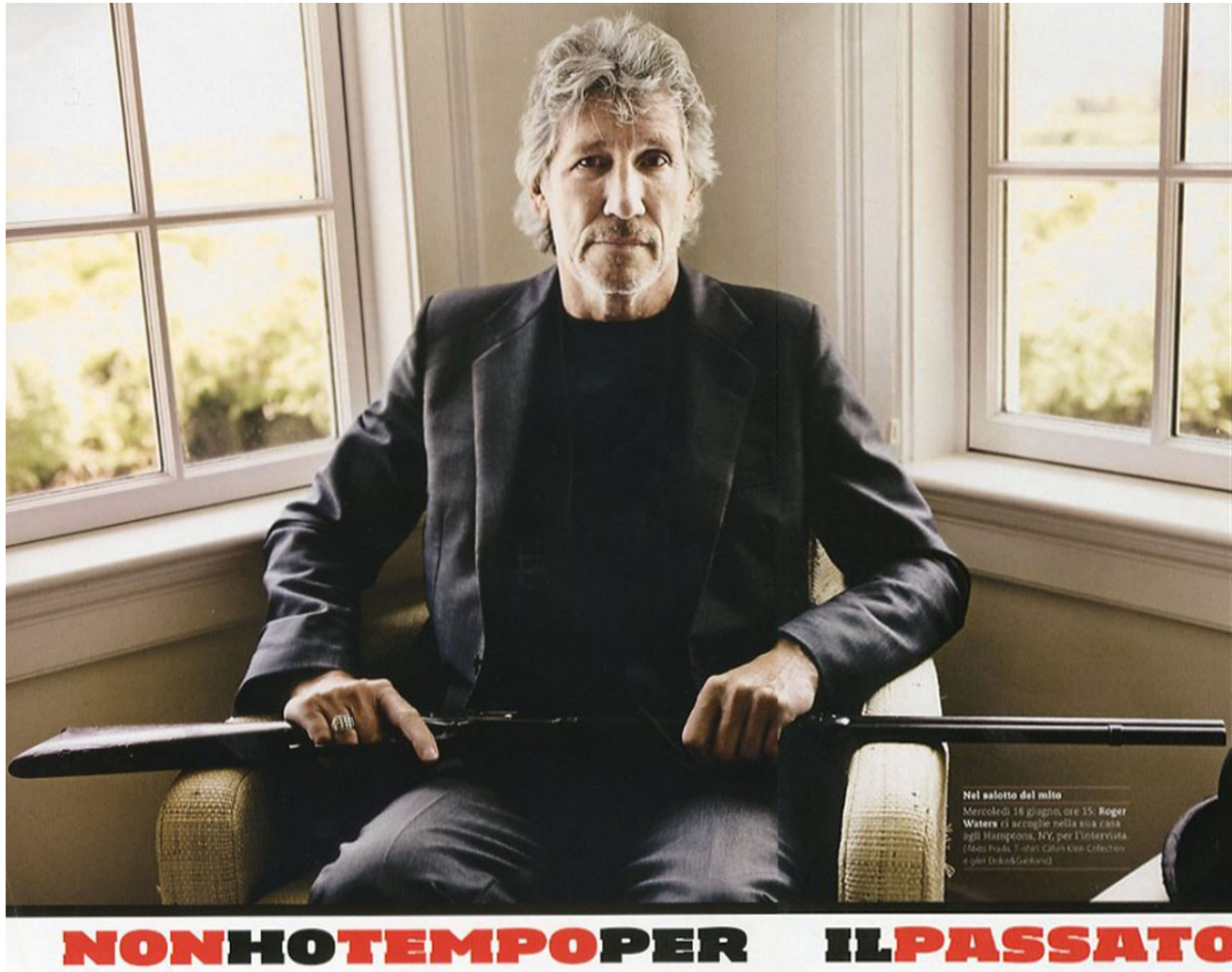
Art Department



Bobette Cohn

www.art-dept.com

Art Department



Bobette Cohn

www.art-dept.com

Art Department



Bobette Cohn

www.art-dept.com

Art Department



Bobette Cohn

www.art-dept.com

Art Department



Bobette Cohn

www.art-dept.com

Art Department



Bobette Cohn

www.art-dept.com

Art Department



Bobette Cohn

www.art-dept.com

Art Department



Bobette Cohn

www.art-dept.com

Art Department



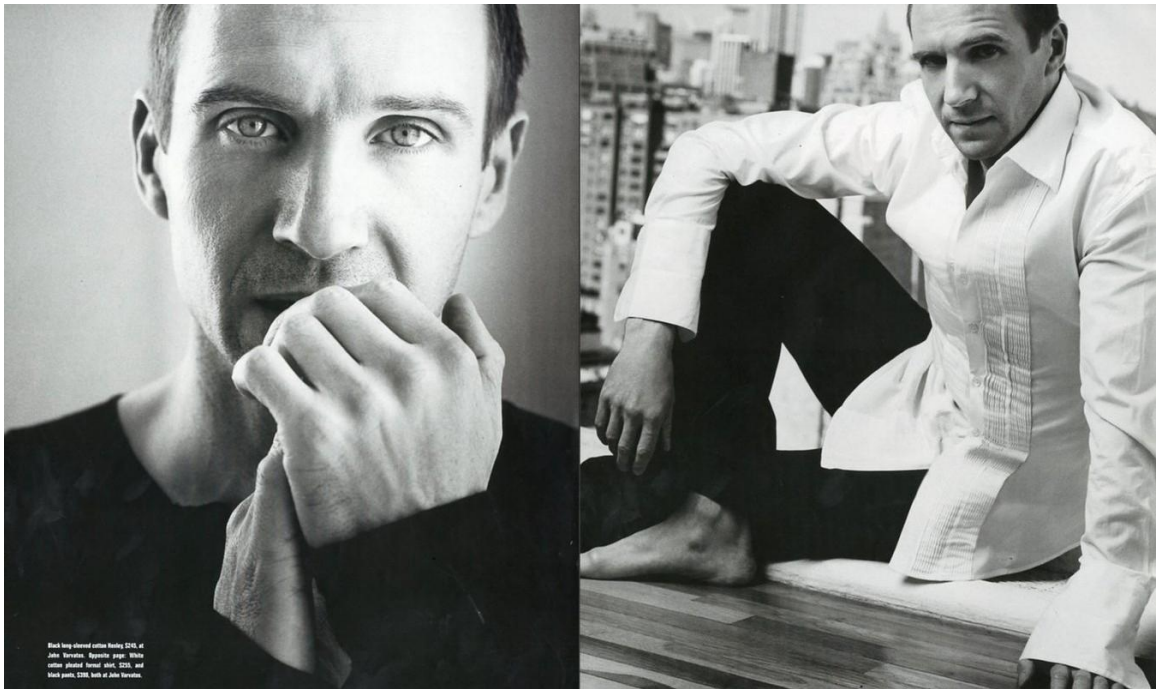
Button-front shirt, \$198, and
black fine twill wool pants,
\$375, both at John Varvatos.

SHOT AT MANSIONALE STUDIOS

Bobette Cohn

www.art-dept.com

Art Department



Bobette Cohn

www.art-dept.com

Art Department



Bobette Cohn

www.art-dept.com

Art Department



Bobette Cohn

www.art-dept.com

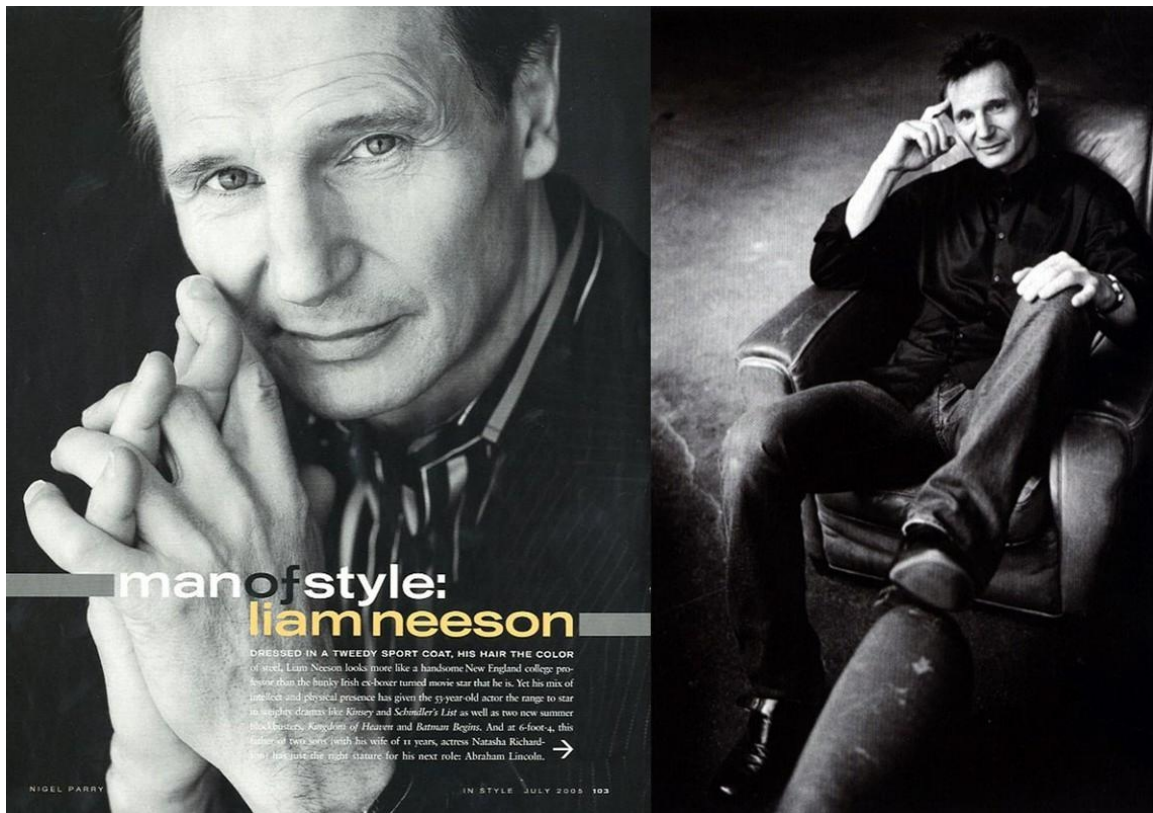
Art Department



Bobette Cohn

www.art-dept.com

Art Department



Bobette Cohn

www.art-dept.com

Art Department



Bobette Cohn

www.art-dept.com

Art Department



Bobette Cohn

www.art-dept.com

Art Department



Bobette Cohn

www.art-dept.com

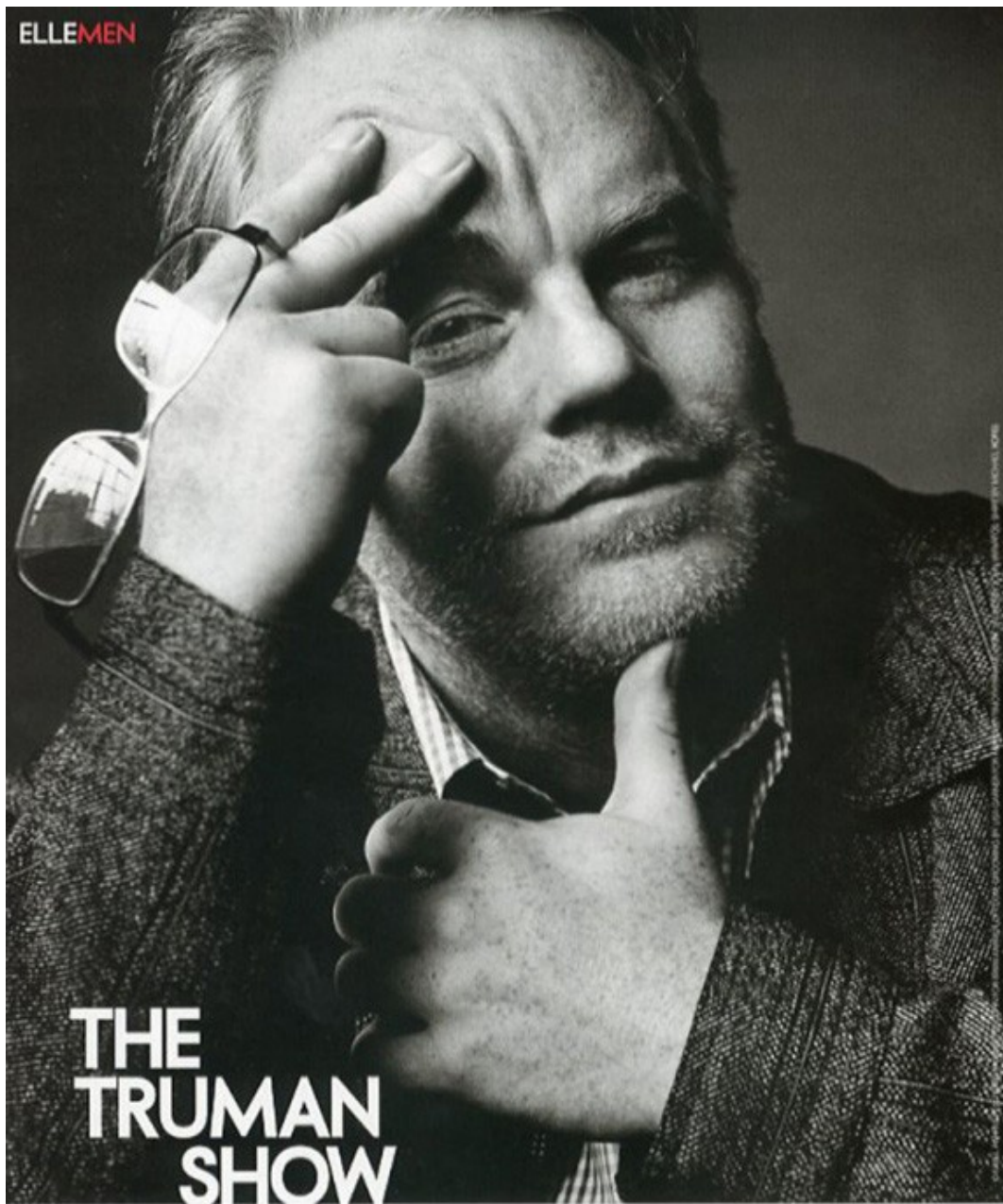
Art Department



Bobette Cohn

www.art-dept.com

Art Department



PHILIP SEYMOUR HOFFMAN SUBMITTED MIND, BODY, AND SOUL TO PORTRAY THE LEGENDARILY TALENTED AND TORTURED WRITER IN THE FILM *CAPOTE* AND EMERGED WITH THE PERFORMANCE OF A LIFETIME

PHOTOGRAPHED BY NIGEL FARRY

318 0111

WWW.ELLE.COM

Bobette Cohn

www.art-dept.com