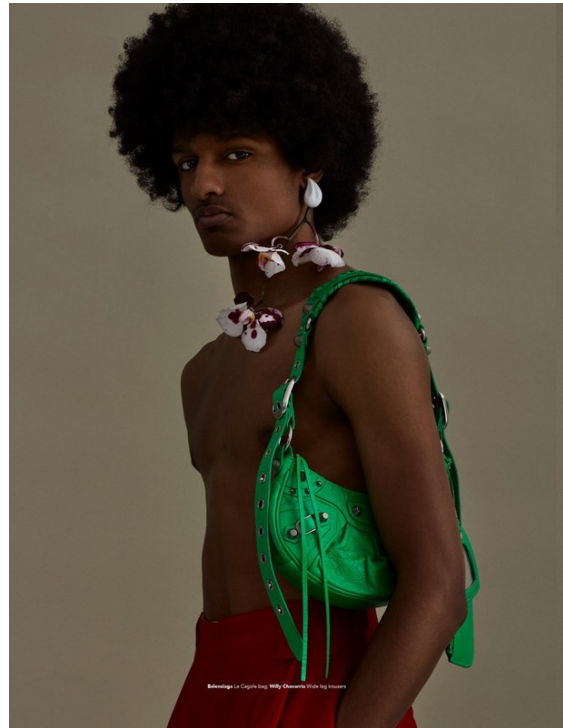


Art Department



Jenese Utley

www.art-dept.com

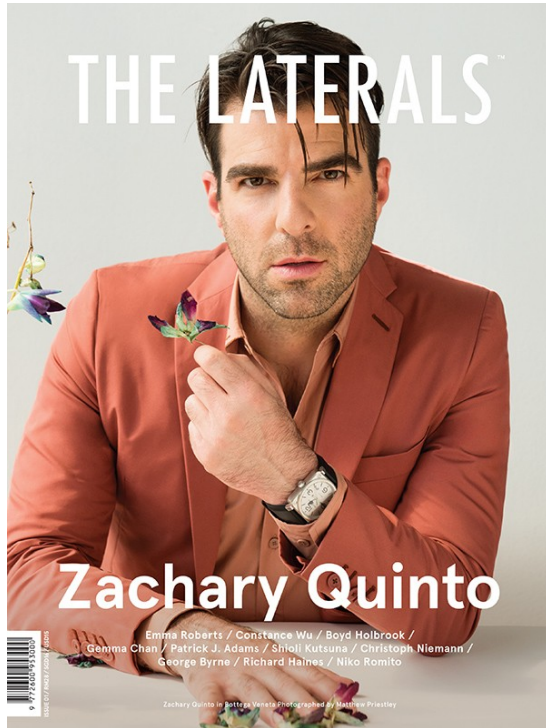
Art Department



Jenese Utey

www.art-dept.com

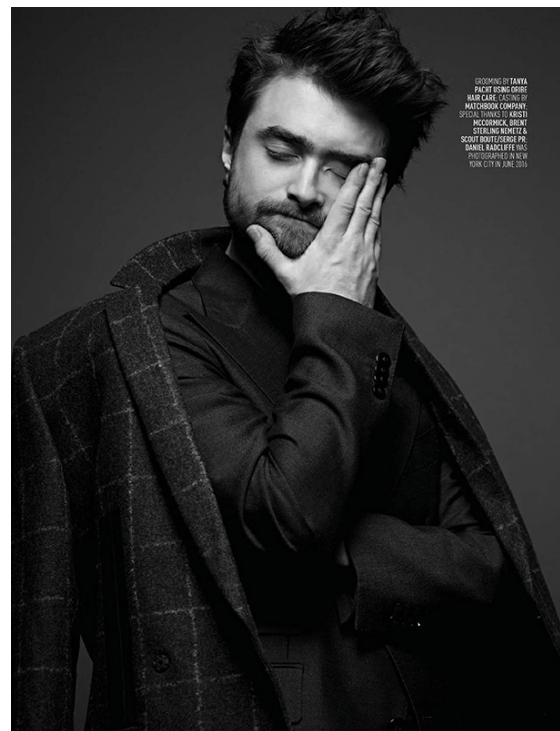
Art Department



Jenese Utley

www.art-dept.com

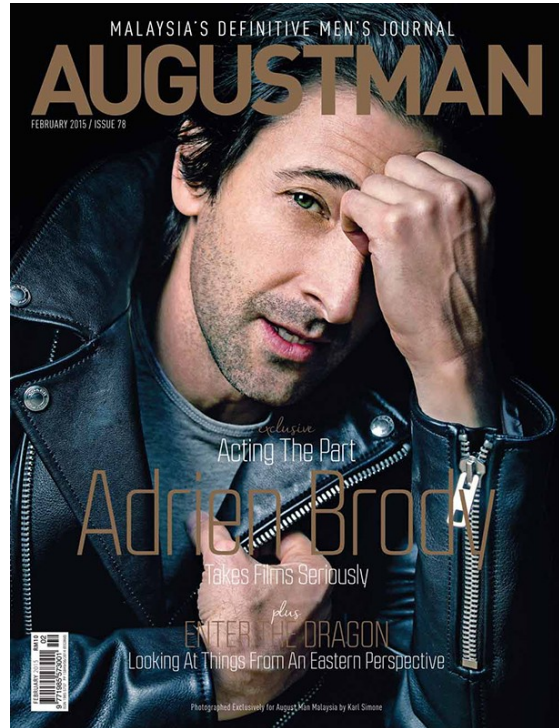
Art Department



Jenese Utle

www.art-dept.com

Art Department



Jenese Utley

www.art-dept.com

Art Department



Jenese Utley

www.art-dept.com

Art Department



Jenese Utle

www.art-dept.com

Art Department



Jenese Utley

www.art-dept.com

Art Department



Black suit, shirt, sweater, trousers, tie, belt and chain
DIOR HOMME
Photographer Filippo del Vita
Stylist Jenesee Utley
Grooming Eddie Cheung
for Mac cosmetics
Model Dillon at Wilhelmina NYC

Jenesee Utley

www.art-dept.com

Art Department



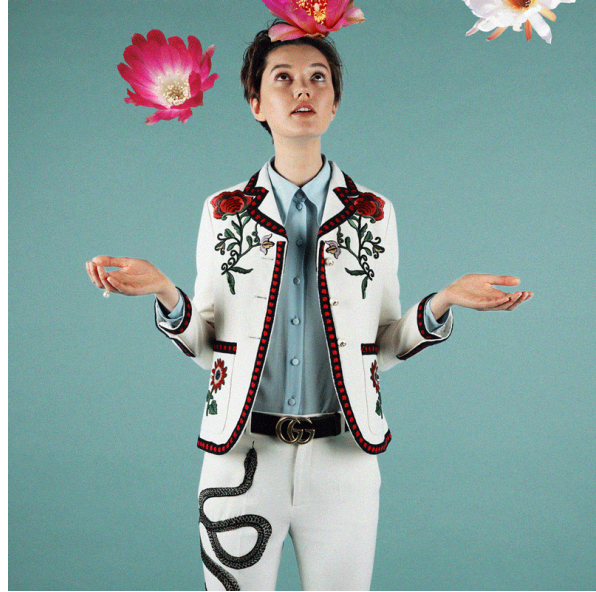
YEARBOOK



Jenesee Utley

www.art-dept.com

Art Department



Jenese Utley

www.art-dept.com

Art Department

ON ROSE SMITH: THE BRESLA AVAILABLE AT DICKY FIFTH AVENUE AT 841 W. REDD ST. TORONTO. THE LADIES AVAILABLE AT NEVETSTROM AT AVVENTURA MALL, BORGSTROMKORON, TEN SANGAL, AVAILABLE AT NEVETSTROM AT AVVENTURA MALL, TEN ZONE.

ON MARGARETA BRONKHORST: COACH PAPER, AVAILABLE AT BRICKELL CITY CENTRE, MIAMI.

DOUBLE TROUBLE

Traditional sportswear has noticeably turned up its fashion quotient, making it the perfect complement to this season's hottest ready-to-wear pieces.

PHOTOGRAPHY BY FILIPPO DEL VITA STYLED BY JENESEE UTLEY

148 ventonagfl.com

ventonagfl.com 148



Jeneese Utley

www.art-dept.com

Art Department



Jenessee Utley

www.art-dept.com

Art Department



Jenese Utley

www.art-dept.com

Art Department



Jenese Utley

www.art-dept.com

Art Department

DEEP EMOTION

Photography
FILIPPO DEL VITA

Styling
JENESEE UTLEY



Foundation: Kevin Aucoin Sensual Skin Enhancer in SC 03
Eyes: Dior Eyeliner Long Wear Waterproof in Silk Captivating Blue, Shu Uemura False Lashes in Smoky Layers
Blush: Yves Saint Laurent Terre Sahara Matte Powder in 5 Golden Sand
Lips: Tom Ford Lip Color Matte Flame
Nails: Christian Louboutin in La Favorita nude
Pink sequin gown, PREEN by THORNTON BREGAZZI

Skin: La Mer The Moisturizing Soft Cream
Foundation: Dier skin Nude Air Serum in #00 Light Beige
Eyebrows: Anastasia Beverly Hills clear brow gel
Eyes: Chanel Les 4 Ombres in 79 Spices, Le Volume the Châtel Waterproof mascara in 10 Noir Blue, Estée Lauder Genuine Glow in Peachy Keen
Lips: Christian Louboutin lipstick in Non Rouge and Miss Clingy
White button down shirt, SAINT LAURENT, Striped bowtie, BOEN

Just like an artist on her canvas, you must look at your eyes, lips, contours, cheekbones and even neckline to create your own masterpiece. From glitter eyes to arty liner and neon lips, your makeup will be the one thing other than your clothing itself that stands out the most.



SNOW PATROL

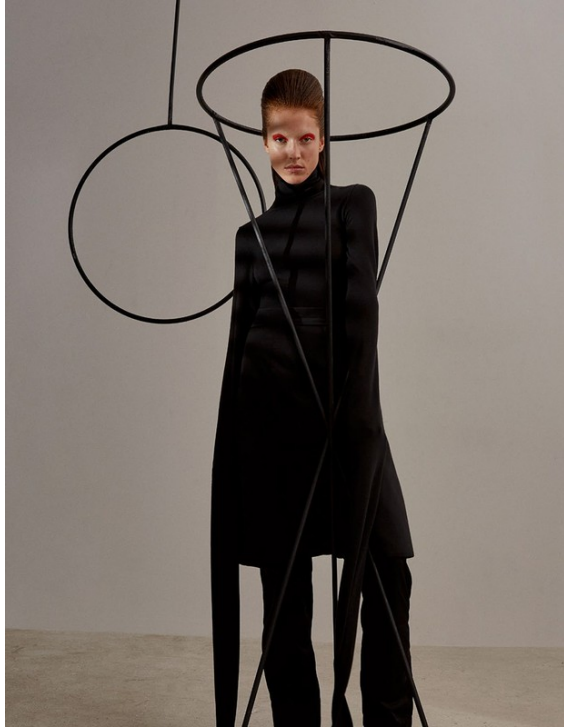
PHOTOGRAPHY KARL SIMONE
STYLE EDITOR JENESEE UTLEY
TALENT CALEB ELIAH, IMG

Jacket: Yajin
Pants: Willy Chavanna
Belt: Willy Chavanna
Socks: REL
Shoes: Michael Kors

Jeneese Utley

www.art-dept.com

Art Department



Jenese Utley

www.art-dept.com

Art Department



Pantsuits are among the fall fashion trends that automatically have us wanting to update our work wardrobe, but with something more hip and cool. Here are some of our suggestions.



Jenesee Utley

www.art-dept.com

Art Department



Jenese Utle

www.art-dept.com

Art Department



Jenesee Utley

www.art-dept.com

Art Department



HARDIOR

With this Fall 17 collection, Kris Van Assche is taking inspiration from the New Wave period. Emerging at the end of the 1970's in Europe and the USA, this movement is an "offshoot" of Rock 'n Roll music, characterized by the use of electronic devices to complete guitar riffs. Paying tribute to the House Savoir-Faire and its heritage, Kris Van Assche is also re-interpreting traditional tailoring in the light of underground inspirations, creating contrasting combinations which are the base of the new Dior Homme spirit.

Photographer *FILIPPO DEL VITA*
Stylist *JENESEE UTLEY*

Black wool and cashmere sweater with flat metal bands. "Cropped" trousers in red velvet. Leather gloves. Nylon rucksack with mesh pelt print and black calfskin. Bear keyring with "Hardior" strap. DIOR HOMME



PRADA JACKET, SKIRT, TOTE BAG AND SHOES, AVAILABLE AT BAL HARBOUR SHOPS, HARBOUR.COM. STYLING: JANE SOWEN



CHANEL DRESS, BAG AND SHOES, AVAILABLE AT BAL HARBOUR SHOPS, HARBOUR.COM. STYLING: JANE SOWEN

PHOTOGRAPHER: FILIPPO DEL VITA
STYLIST: JENESEE UTLEY
HAIR: FLORE CHENOUART DEPARTMENT
MAKEUP: JESSICA SANCHEZ DEPARTMENT
MODEL: SARAVYTA RECHVALO, HARLEIN NYC

venetianmag.it.com 149

Jenesee Utley

www.art-dept.com

Art Department



Jenese Utle

www.art-dept.com

Art Department



Jenese Utley

www.art-dept.com