

Art Department



SUMMER BLOOM

The fresh and striking mix of colour for the sunny season.
Photography Filippo Del Vita *Styling* Jenesee Utley

Willy Chavarria Oversized shirt, wide leg trousers

Jenesee Utley

www.art-dept.com

Art Department



Balenciaga Le Cagole bag; Willy Chavarria Wide leg trousers

Jenese Utley

www.art-dept.com

Art Department



Jenese Utle

www.art-dept.com

Art Department



Jenese Utley

www.art-dept.com

Art Department



Jenese Utley

www.art-dept.com

Art Department



Jenesee Utley

www.art-dept.com

Art Department



Jenesee Utley

www.art-dept.com

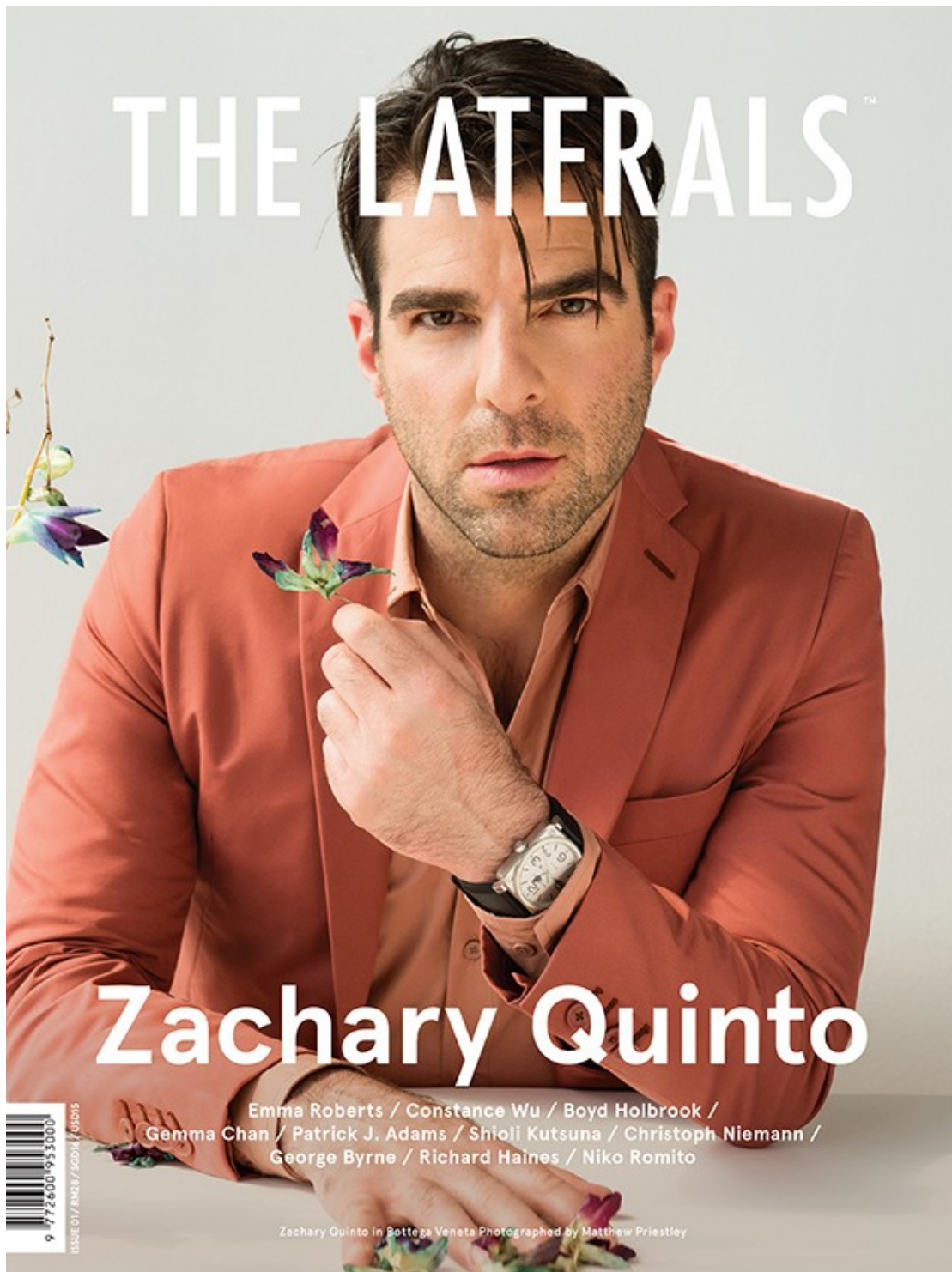
Art Department



Jenese Utlely

www.art-dept.com

Art Department



Jenese Utle

www.art-dept.com

Art Department



Jenessie Utley

www.art-dept.com

Art Department



Jenesee Utley

www.art-dept.com

Art Department



Jenese Utley

www.art-dept.com

Art Department



Jenese Utle

www.art-dept.com

Art Department



Jenese Utley

www.art-dept.com

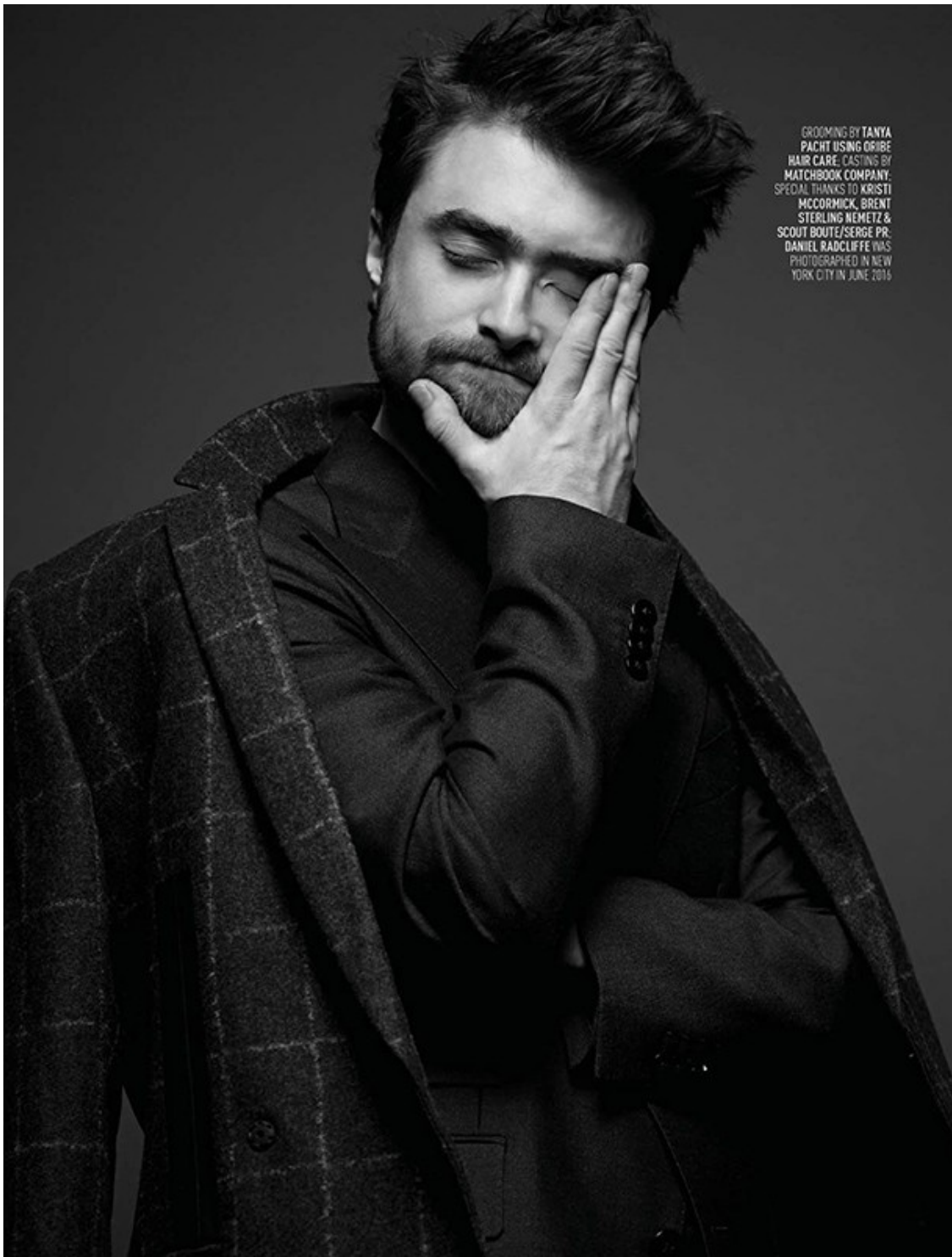
Art Department



Jenesee Utley

www.art-dept.com

Art Department



GROOMING BY TANYA
PACHT USING GRIBE
HAIR CARE. CASTING BY
MATCHBOOK COMPANY.
SPECIAL THANKS TO KRISTI
MCCORMICK, BRENT
STERLING NEMETZ &
SCOUT BOUTE/SERGE PR.
DANIEL RADCLIFFE WAS
PHOTOGRAPHED IN NEW
YORK CITY IN JUNE 2016

Jenese Utle

www.art-dept.com

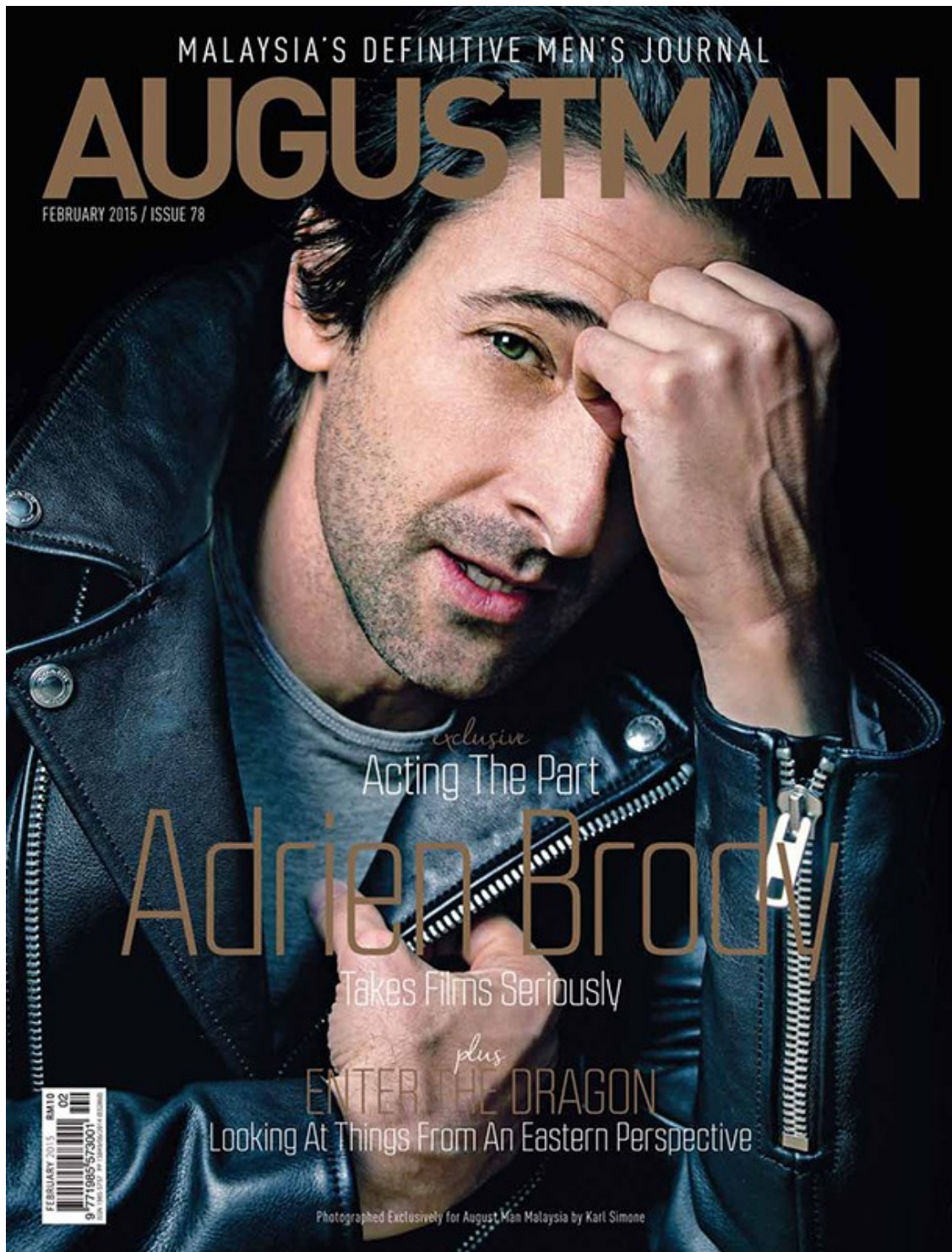
Art Department



Jenese Utley

www.art-dept.com

Art Department



Jenese Utle

www.art-dept.com

Art Department



Coat by ASO GANOT.
Cashmere rollneck by UNIQLO.
Jeans by DOLCE & GABBANA

Jenesee Utley

www.art-dept.com

Art Department



Jeneese Utley

www.art-dept.com

Art Department



Jenese Utley

www.art-dept.com

Art Department



Jenese Utley

www.art-dept.com

Art Department



Jenese Utley

www.art-dept.com

Art Department



Jenese Utley

www.art-dept.com

Art Department



Jenesee Utley

www.art-dept.com

Art Department



Jenesee Utley

www.art-dept.com

Art Department



Jenese Utley

www.art-dept.com

Art Department



Jenessa Utley

www.art-dept.com

Art Department



Jenese Utley

www.art-dept.com

Art Department



Jenese Utley

www.art-dept.com

Art Department

Black suit, shirt,
sweater, sneakers,
tie, belt and chain,
DIOR HOMME

Photographer Filippo del Vita
Stylist Jenesee Utley
Grooming Eloise Cheung
for Mac cosmetics
Model Dillon at Wilhelmina NYC



Jenesee Utley

www.art-dept.com

Art Department



Jenese Utley

www.art-dept.com

Art Department

YEARBOOK



EDITION #12

Jenesee Utley

www.art-dept.com

Art Department

MODA

Casaco, suéter
e calça Bottega
Veneta

SIMPLE
CHIC

A ALFAIATARIA ASSUME LINHAS RELAXADAS
PARA DAR FORMA A UMA ELEGÂNCIA
DESCONSTRUÍDA E SEM ESFORÇO
Fotos **KARL SIMONE** Styling **JENESEE UTLEY**

142 || || OUTUBRO 2016

Jenese Utley

www.art-dept.com

Art Department



Jenese Utley

www.art-dept.com

Art Department



Jenese Utley

www.art-dept.com

Art Department



Jenese Utley

www.art-dept.com

Art Department



62 Fall 2013 PEOPLE Gorgeous At Any Age

HAIR: NICK CONNOR/STYLING: KAREN MARSHALL/STYLING BY TRACY FRANKO/STYLING JENESSEE UTLEY & MANAGEMENT

Jenesee Utley

www.art-dept.com

Art Department



Jenesee Utley

Art Department

ON ROSE SMITH TBI DRESS
AVAILABLE AT SAKS FIFTH
AVENUE AT BAL HARBOUR
SHOPS, TRICOM ZELLA
LEGGINGS, AVAILABLE AT
NORDSTROM AT AVENTURA
MALL, NORDSTROM.COM
TON SANDALS, AVAILABLE AT
NORDSTROM AT AVENTURA
MALL, TENA.COM

ON MARGARITA BROADWATER
COACH PURSE, AVAILABLE
AT BRICKELL CITY CENTRE,
COACH.COM

148 vnicomagfll.com

DOUBLE TROUBLE

Traditional sportswear has noticeably turned up its fashion quotient, making it the perfect complement to this season's hottest ready-to-wear pieces.

PHOTOGRAPHY BY FILIPPO DEL VITA STYLED BY JENESEE UTLEY

vnicomagfll.com 149

Jenese Utley

www.art-dept.com

Art Department



Jenesee Utley

www.art-dept.com

Art Department



Louis Vuitton leather shirt, skirt & jacket Giuseppe Zanotti lace-up pumps



Coach 8445 leather vest, skirt, armband & leather pants

Jenese Utley

www.art-dept.com

Art Department



Jenessee Utley

www.art-dept.com

Art Department



Jenese Utley

www.art-dept.com

Art Department



Jeneese Utley

www.art-dept.com

Art Department



Jenese Utley

www.art-dept.com

Art Department



Jenese Utley

www.art-dept.com

Art Department



Jenese Utley

www.art-dept.com

Art Department

DEEP EMOTION

Photography
FILIPPO DEL VITA

Styling
JENESEE UTLEY



Foundation: Kevin Aucoin Sensual
Skin Enhancer in SX 03
Eyes: Dior Eyeliner Long Wear
Waterproof in 254 Captivating
Blue, Shu Uemura False
Lashes in Smoky Layers
Blush: Yves Saint Laurent
Terre Saharienne Powder
in 3 Golden Sand
Lips: Tom Ford Lip Color
Matte Flame
Nails: Christian Louboutin
in La Favorita nude

Pink sequin gown, PREEN by
THORNTON BREGAZZI



Skin: La Mer The Moisturizing
Soft Cream
Foundation: Dior Skin Nude Air
Serum in 020 Light Beige
Eyebrows: Anastasia Beverly
Hills Clear Brow Gel
Eyes: Chanel Les 4 Ombres in 79
Spices, Le Volume the Chanel
Waterproof mascara in 10 Noir
Blush: Estee Lauder Genuine
Glow in Peachy Keen
Lips: Christian Louboutin lipstick
in Ron Ron and Miss Clichy

White button down shirt, SAINT
LAURENT. Striped bowtie, DIOR

Just like an artist
on her canvas, you
must look at your
eyes, lips, contours,
cheekbones and
even neckline to
create your own
masterpiece. From
glitter eyes to arty
liner and neon
lips, your makeup
will be the one
thing other than
your clothing
itself that stands
out the most.

Jenesees Utley

www.art-dept.com

Art Department



Jeneese Utley

www.art-dept.com

Art Department



Jenese Utley

www.art-dept.com

Art Department



Jenese Utley

www.art-dept.com

Art Department



Jenese Utley

www.art-dept.com

Art Department



Jenesee Utley

www.art-dept.com

Art Department

Blue cable knit angora sweater, teal high waisted pants, suede ruffled socks, leather mules and sunglasses, FENDI

Pantsuits are among the fall fashion trends that automatically have us wanting to update our work wardrobe, but with something more hip and cool. Here are some of our suggestions.



INTRIGUING ENSEMBLES

Photography
FILIPPO DEL VITA

Styling
JENESEE UTLEY

Jenesee Utley

www.art-dept.com

Art Department



Jenesee Utley

www.art-dept.com

Art Department



Jenese Utle

www.art-dept.com

Art Department



Jenese Utley

www.art-dept.com

Art Department



Jenese Utley

www.art-dept.com

Art Department



Jenesee Utley

www.art-dept.com

Art Department



Jenese Utle

www.art-dept.com

Art Department



Jenesee Utley

www.art-dept.com

Art Department



Black wool and cashmere sweater with flat metal beads. "Cropped" trousers in red velvet. Leather gloves. Nylon rucksack with moose pits print and black calfskin. Bear key ring with "hardior" strap. DIOR HOMME

HARDIOR

With this Fall 17 collection, Kris Van Assche is taking inspiration from the New Wave period. Emerging at the end of the 1970's in Europe and the USA, this movement is an "offshoot" of Rock 'n Roll music, characterized by the use of electronic devices to complete guitar riffs. Paying tribute to the House Savoir-Faire and its heritage, Kris Van Assche is also re-interpreting traditional tailoring in the light of underground inspirations, creating contrasting combinations which are the base of the new Dior Homme spirit.

*Photographer FILIPPO DEL VITA
Stylist JENESEE UTLEY*

Jenese Utley

www.art-dept.com

Art Department



PRADA JACKET, SKIRT, TOP BAG
AND SHOES, AVAILABLE AT BAL
HARBOUR SHOPS, PRADA.COM.

Jenese Utley

www.art-dept.com

Art Department



CHANEL DRESS, BAG AND SHOES,
AVAILABLE AT BAL HARBOUR SHOPS,
CHANEL.COM; STOCKINGS ARE
STYLIST'S OWN.

PHOTOGRAPHER: FILIPPO DEL VITA
STYLIST: JENESEE UTLEY
HAIR: ELOISE CHEUNG/ART DEPARTMENT
USING RENE FURTERER
MAKEUP: CHICHI SAITO/ART DEPARTMENT
USING SMASHBOX
MODEL: SAMANTHA ARCHIBALD/MARILYN NYC

venicemagfl.com 149

Jeneese Utley

www.art-dept.com

Art Department



Jenese Utley

www.art-dept.com

Art Department



Jenese Utley

www.art-dept.com

Art Department



Jenese Utley

www.art-dept.com

Art Department



Jenese Utley

www.art-dept.com

Art Department



Jenese Utle

www.art-dept.com