

Art Department



Liz Rundbaken

www.art-dept.com

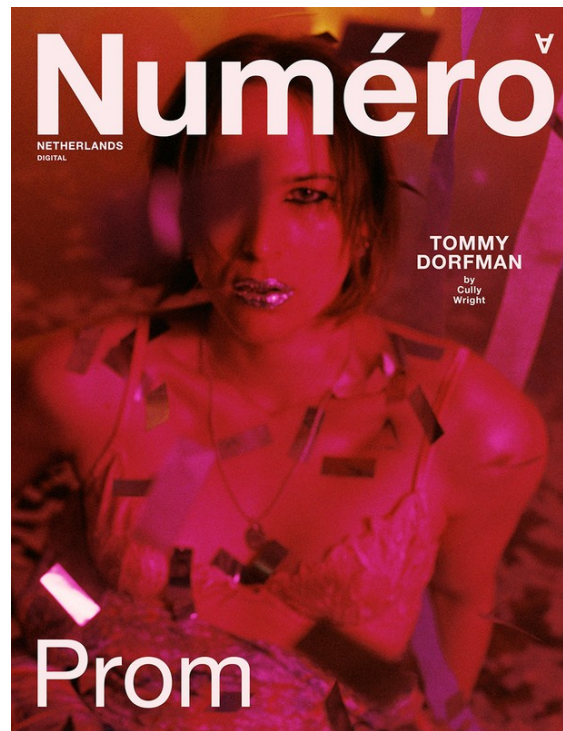
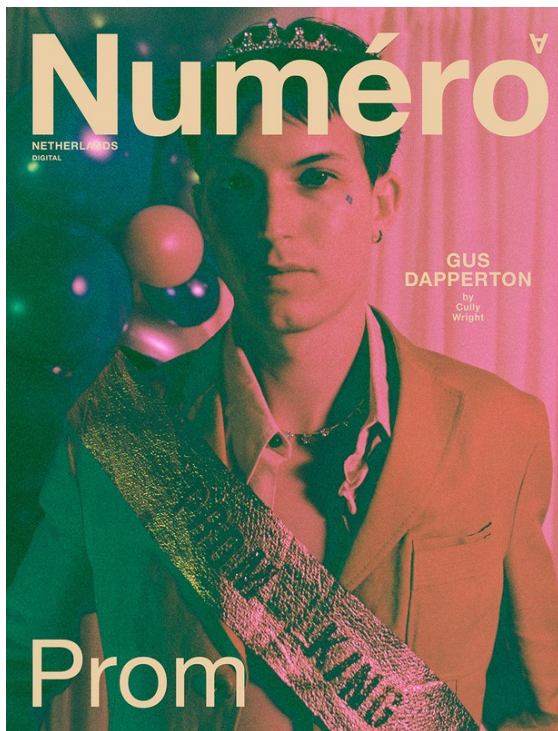
Art Department



Liz Rundbaken

www.art-dept.com

Art Department



Liz Rundbaken

Art Department



Liz Rundbaken

www.art-dept.com

Art Department



Liz Rundbaken

www.art-dept.com

Art Department



Liz Rundbaken

www.art-dept.com

Art Department



Liz Rundbaken

www.art-dept.com

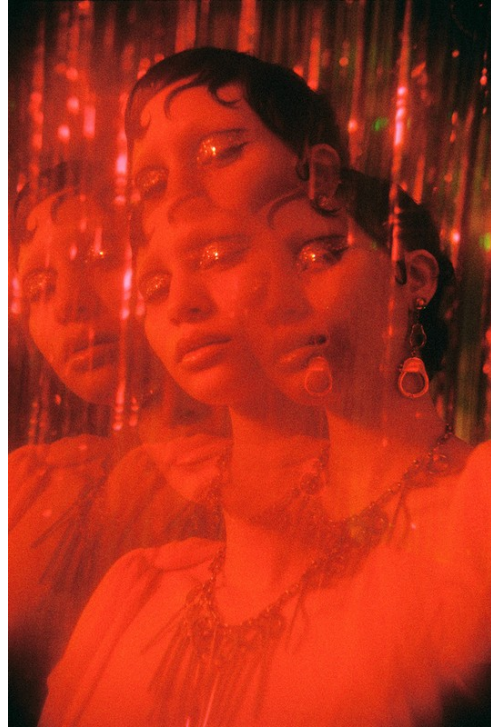
Art Department



Liz Rundbaken

www.art-dept.com

Art Department



Liz Rundbaken

www.art-dept.com

Art Department



Liz Rundbaken

www.art-dept.com

Art Department



Liz Rundbaken

www.art-dept.com

Art Department



Liz Rundbaken

www.art-dept.com

Art Department



Liz Rundbaken

www.art-dept.com

Art Department



Liz Rundbaken

www.art-dept.com

Art Department



Liz Rundbaken

www.art-dept.com

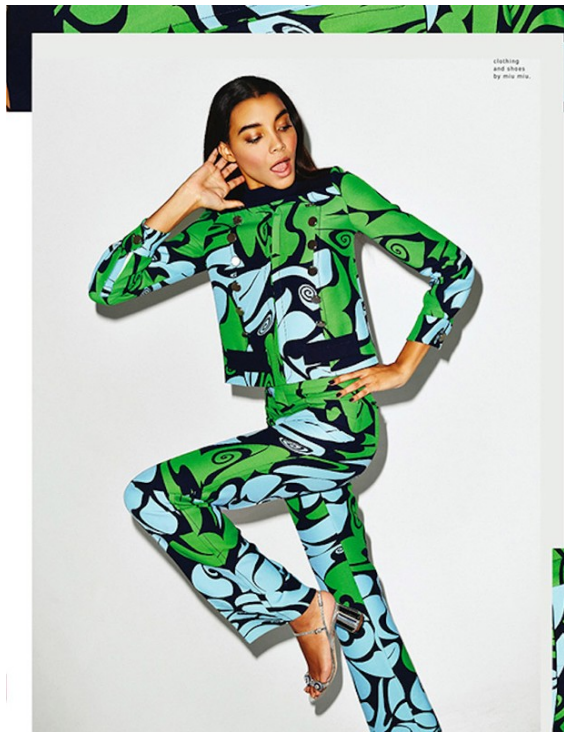
Art Department



Liz Rundbaken

www.art-dept.com

Art Department



Liz Rundbaken

Art Department



Liz Rundbaken

www.art-dept.com

Art Department



Liz Rundbaken

www.art-dept.com

Art Department



Liz Rundbaken

www.art-dept.com

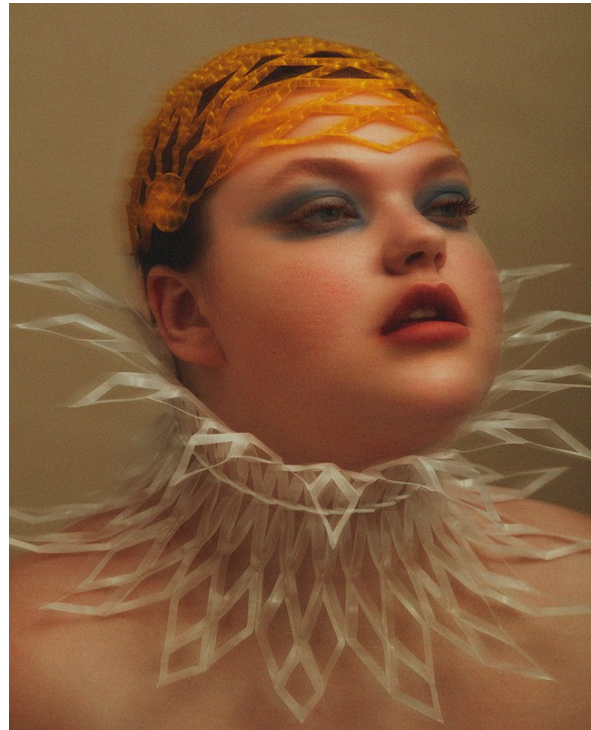
Art Department



Liz Rundbaken

www.art-dept.com

Art Department



Liz Rundbaken

www.art-dept.com

Art Department



Liz Rundbaken

www.art-dept.com

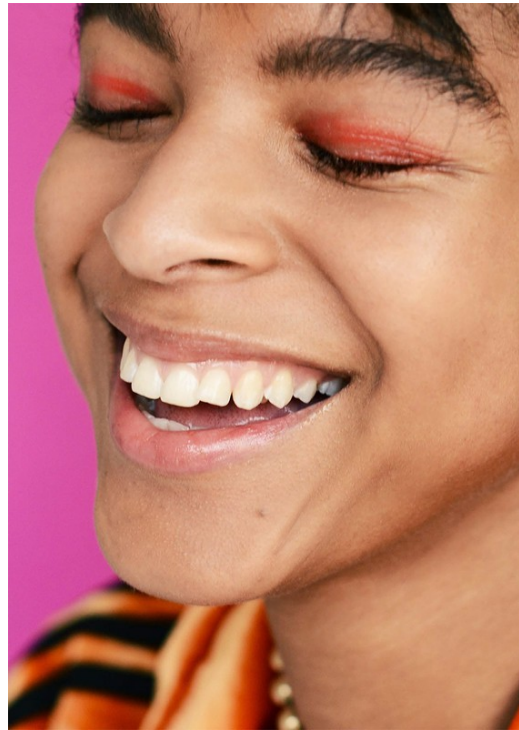
Art Department



Liz Rundbaken

www.art-dept.com

Art Department



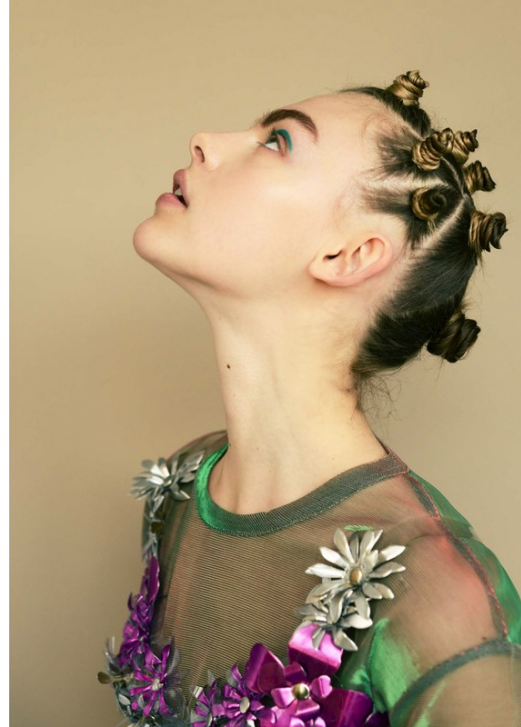
Liz Rundbaken

www.art-dept.com

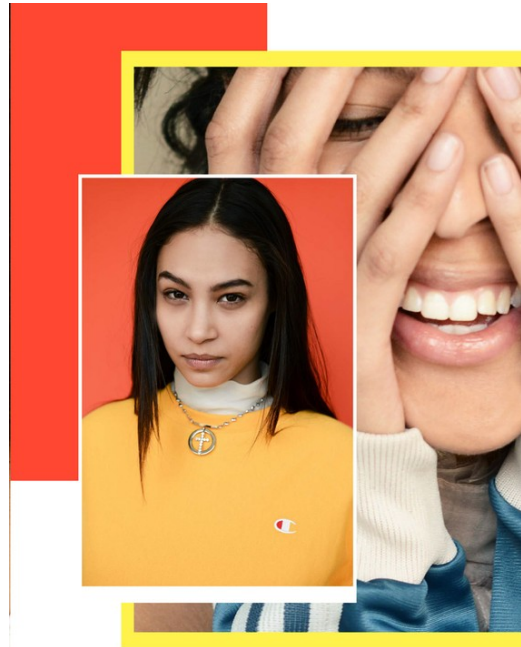
Art Department



TEE: SILENCE + NOISE BRA: LAUREL DEWITT BRA



JACKET: TOPSHOP -- TOP: KINCHI BLUE

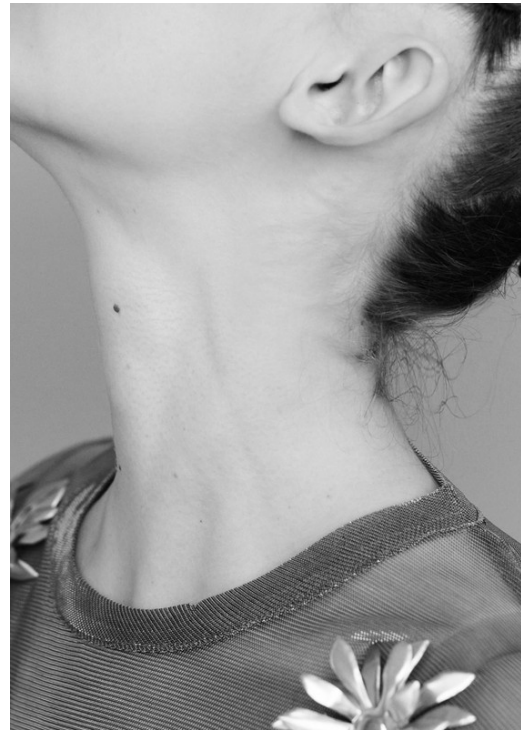


SWEAT SHIRT: CHAMPION BLOUSE: GIVENCHY NECKLACE: LARDICCI

Liz Rundbaken

www.art-dept.com

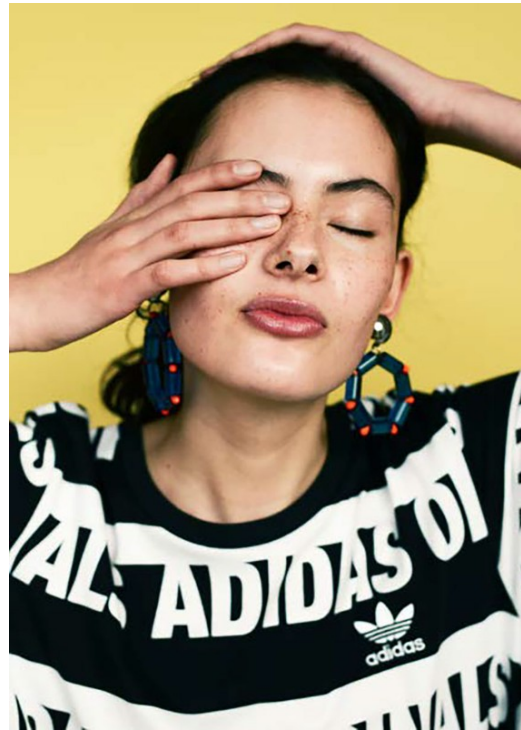
Art Department



Liz Rundbaken

www.art-dept.com

Art Department



Liz Rundbaken

www.art-dept.com

Art Department



Liz Rundbaken

www.art-dept.com

Art Department



Liz Rundbaken

www.art-dept.com

Art Department



Liz Rundbaken

www.art-dept.com

Art Department



Liz Rundbaken

www.art-dept.com

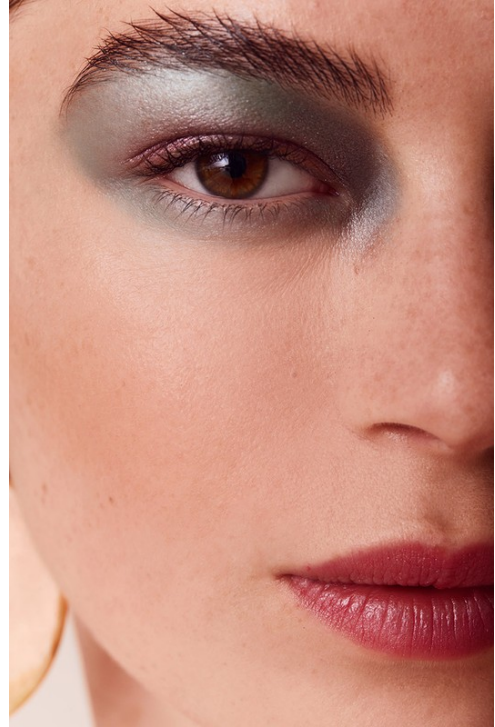
Art Department



Liz Rundbaken

www.art-dept.com

Art Department



Liz Rundbaken

www.art-dept.com

Art Department



Liz Rundbaken

www.art-dept.com

Art Department



Liz Rundbaken

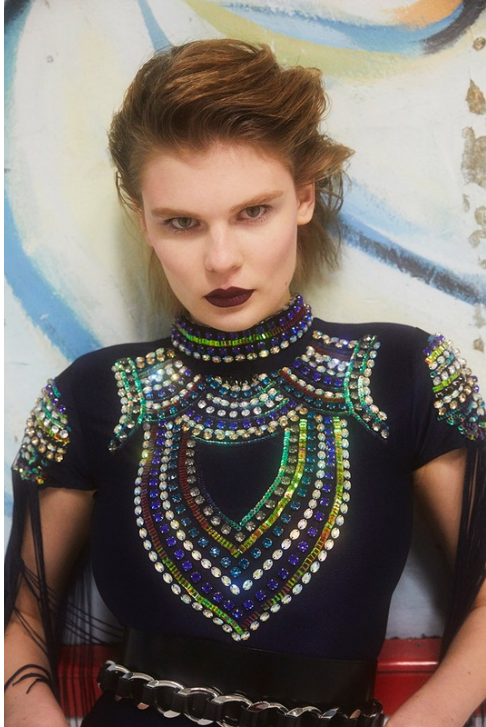
www.art-dept.com

Art Department



Liz Rundbaken

Art Department



Liz Rundbaken

www.art-dept.com

Art Department



Liz Rundbaken

www.art-dept.com

Art Department



Liz Rundbaken

www.art-dept.com

Art Department



Liz Rundbaken

www.art-dept.com

Art Department



Liz Rundbaken

www.art-dept.com

Art Department



Liz Rundbaken

www.art-dept.com

Art Department



Liz Rundbaken

www.art-dept.com

Art Department



Liz Rundbaken

www.art-dept.com

Art Department



Liz Rundbaken

www.art-dept.com

Art Department



Liz Rundbaken

www.art-dept.com

Art Department



Liz Rundbaken

www.art-dept.com

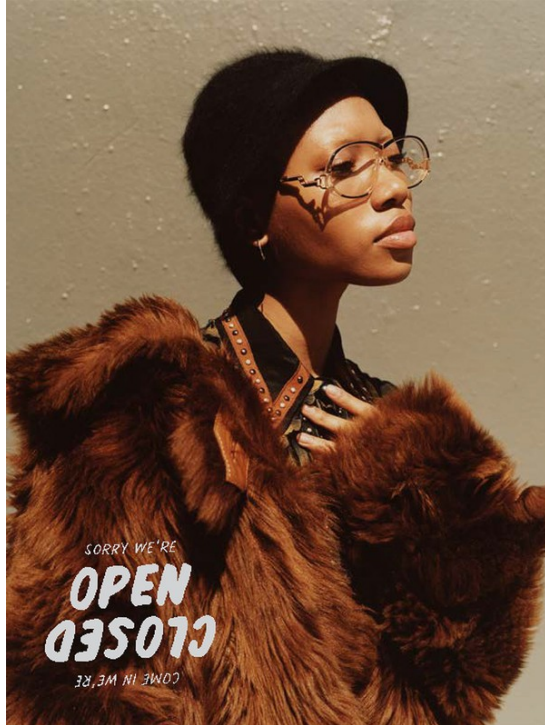
Art Department



Liz Rundbaken

www.art-dept.com

Art Department



Liz Rundbaken

www.art-dept.com

Art Department



Liz Rundbaken

www.art-dept.com

Art Department



Liz Rundbaken

www.art-dept.com

Art Department



Liz Rundbaken

www.art-dept.com

Art Department



Liz Rundbaken

www.art-dept.com

Art Department



Liz Rundbaken

www.art-dept.com

Art Department



Liz Rundbaken

www.art-dept.com

Art Department



try these burberry eye colour wear & dry silk shadow in stone blue no. 307, \$29; sephora.com; bobbi brown high shimmer lip gloss in pastel, \$26; sephora.com; burble and bumble dryspan finish, \$31; bumbleandbumble.com; opposite page: ket von d metal crush eyeshadow in thrasher, \$21; sephora.com; marc jacobs beauty velvet noir major volume mascara, \$26; sephora.com; bumble and bumble bb, curl defining creme, \$31; bumbleandbumble.com.

Liz Rundbaken

www.art-dept.com

Art Department



Liz Rundbaken

www.art-dept.com

Art Department



Liz Rundbaken

www.art-dept.com

Art Department



Liz Rundbaken

www.art-dept.com

Art Department



Liz Rundbaken

www.art-dept.com

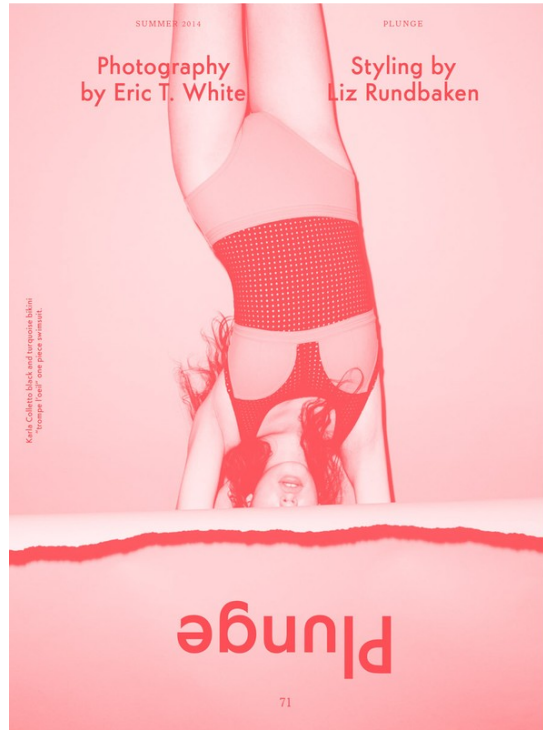
Art Department



Liz Rundbaken

www.art-dept.com

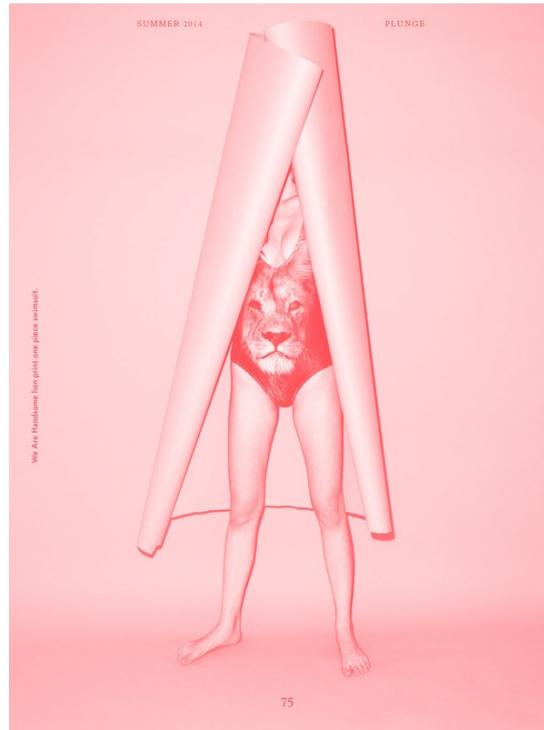
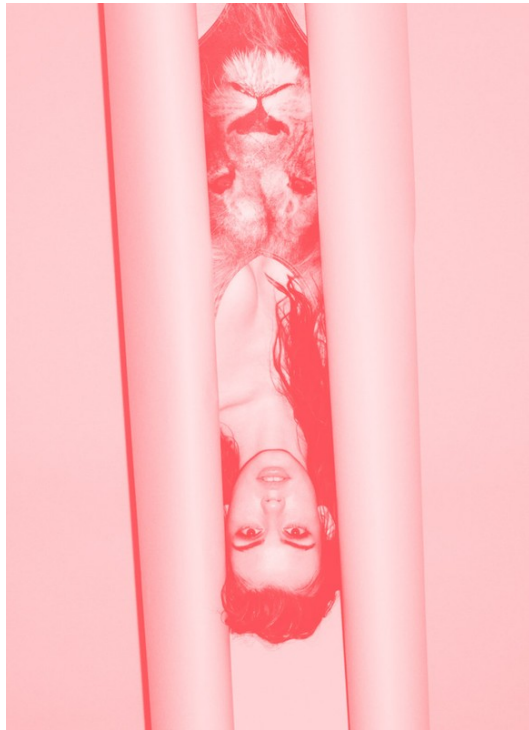
Art Department



Liz Rundbaken

www.art-dept.com

Art Department



Liz Rundbaken

www.art-dept.com

Art Department



Liz Rundbaken

www.art-dept.com