

# Art Department



Lorri Sendel

[www.art-dept.com](http://www.art-dept.com)

# Art Department



Lorri Sendel

[www.art-dept.com](http://www.art-dept.com)

# Art Department



Lorri Sendel

[www.art-dept.com](http://www.art-dept.com)



# Art Department



Lorri Sendel

[www.art-dept.com](http://www.art-dept.com)



# Art Department



Lorri Sendel

[www.art-dept.com](http://www.art-dept.com)

# Art Department



Lorri Sendel

[www.art-dept.com](http://www.art-dept.com)

# Art Department



Lorri Sendel

[www.art-dept.com](http://www.art-dept.com)



# Art Department



Lorri Sendel

[www.art-dept.com](http://www.art-dept.com)

# Art Department



Lorri Sendel

[www.art-dept.com](http://www.art-dept.com)

# Art Department



Lorri Sendel

[www.art-dept.com](http://www.art-dept.com)



# Art Department



Lorri Sendel

[www.art-dept.com](http://www.art-dept.com)

# Art Department



Lorri Sendel

[www.art-dept.com](http://www.art-dept.com)



# Art Department



Lorri Sendel

[www.art-dept.com](http://www.art-dept.com)



# Art Department



Lorri Sendel

[www.art-dept.com](http://www.art-dept.com)

# Art Department



Lorri Sendel

[www.art-dept.com](http://www.art-dept.com)



# Art Department



Lorri Sendel

[www.art-dept.com](http://www.art-dept.com)

# Art Department



Lorri Sendel

[www.art-dept.com](http://www.art-dept.com)



# Art Department



Lorri Sendel

[www.art-dept.com](http://www.art-dept.com)



# Art Department



Lorri Sendel

[www.art-dept.com](http://www.art-dept.com)

# Art Department



Lorri Sendel

[www.art-dept.com](http://www.art-dept.com)



# Art Department



Lorri Sendel

[www.art-dept.com](http://www.art-dept.com)

# Art Department



Lorri Sendel

[www.art-dept.com](http://www.art-dept.com)



# Art Department



Lorri Sendel

[www.art-dept.com](http://www.art-dept.com)



# Art Department



Lorri Sendel

[www.art-dept.com](http://www.art-dept.com)



# Art Department



Lorri Sendel

[www.art-dept.com](http://www.art-dept.com)

# Art Department



Lorri Sendel

[www.art-dept.com](http://www.art-dept.com)



# Art Department



Lorri Sendel

[www.art-dept.com](http://www.art-dept.com)

# Art Department



Lorri Sendel

[www.art-dept.com](http://www.art-dept.com)



# Art Department



Lorri Sendel

[www.art-dept.com](http://www.art-dept.com)

# Art Department



Lorri Sendel

[www.art-dept.com](http://www.art-dept.com)



# Art Department



Lorri Sendel

[www.art-dept.com](http://www.art-dept.com)

# Art Department



Lorri Sendel

[www.art-dept.com](http://www.art-dept.com)



# Art Department



Lorri Sendel

[www.art-dept.com](http://www.art-dept.com)

# Art Department



Lorri Sendel

[www.art-dept.com](http://www.art-dept.com)



# Art Department



Lorri Sendel

[www.art-dept.com](http://www.art-dept.com)

# Art Department



Lorri Sendel

[www.art-dept.com](http://www.art-dept.com)



# Art Department



Lorri Sendel

[www.art-dept.com](http://www.art-dept.com)

# Art Department



Lorri Sendel

[www.art-dept.com](http://www.art-dept.com)



# Art Department



Lorri Sendel

[www.art-dept.com](http://www.art-dept.com)

# Art Department



Lorri Sendel

[www.art-dept.com](http://www.art-dept.com)



# Art Department



Lorri Sendel

[www.art-dept.com](http://www.art-dept.com)

# Art Department



Jacket: Miya Watanabe  
Sart: A Détecher  
Brow: Tawn C  
Belt: McQueen

Lorri Sendel

[www.art-dept.com](http://www.art-dept.com)



# Art Department

"I ALWAYS HAVE AND ALWAYS  
WILL BE A SUCKER FOR THE  
METAPHYSICAL."

---



**Bodysuit:** Electric Feathers  
**Belt:** Lanvin  
**Boots:** A Détecher

On left: **Vintage striped  
bodysuit**  
**Pant:** Haider Ackermann

## Lorri Sendel

[www.art-dept.com](http://www.art-dept.com)

# Art Department



Lorri Sendel

[www.art-dept.com](http://www.art-dept.com)



# Art Department



Lorri Sendel

[www.art-dept.com](http://www.art-dept.com)

# Art Department



Lorri Sendel

[www.art-dept.com](http://www.art-dept.com)



# Art Department



Lorri Sendel

[www.art-dept.com](http://www.art-dept.com)

# Art Department



Lorri Sendel

[www.art-dept.com](http://www.art-dept.com)



# Art Department



Lorri Sendel

[www.art-dept.com](http://www.art-dept.com)

# Art Department



Lorri Sendel

[www.art-dept.com](http://www.art-dept.com)



# Art Department



Lorri Sendel

[www.art-dept.com](http://www.art-dept.com)

# Art Department



Lorri Sendel

[www.art-dept.com](http://www.art-dept.com)



# Art Department



Lorri Sendel

[www.art-dept.com](http://www.art-dept.com)

# Art Department



Lorri Sendel

[www.art-dept.com](http://www.art-dept.com)



# Art Department



Lorri Sendel

[www.art-dept.com](http://www.art-dept.com)

# Art Department



Lorri Sendel

[www.art-dept.com](http://www.art-dept.com)



# Art Department



Lorri Sendel

[www.art-dept.com](http://www.art-dept.com)

# Art Department



Lorri Sendel

[www.art-dept.com](http://www.art-dept.com)



# Art Department



Lorri Sendel

[www.art-dept.com](http://www.art-dept.com)

# Art Department



Lorri Sendel

[www.art-dept.com](http://www.art-dept.com)



# Art Department



Lorri Sendel

[www.art-dept.com](http://www.art-dept.com)

# Art Department



Lorri Sendel

[www.art-dept.com](http://www.art-dept.com)



# Art Department



Lorri Sendel

[www.art-dept.com](http://www.art-dept.com)

# Art Department



Lorri Sendel

[www.art-dept.com](http://www.art-dept.com)



# Art Department



Lorri Sendel

[www.art-dept.com](http://www.art-dept.com)

# Art Department



Lorri Sendel

[www.art-dept.com](http://www.art-dept.com)



# Art Department



Lorri Sendel

[www.art-dept.com](http://www.art-dept.com)

# Art Department



Lorri Sendel

[www.art-dept.com](http://www.art-dept.com)



# Art Department



Lorri Sendel

[www.art-dept.com](http://www.art-dept.com)

# Art Department



Lorri Sendel

[www.art-dept.com](http://www.art-dept.com)



# Art Department



TURTLE CRAWL BY Thom Browne; LEGGINGS BY DarylK; RED SHOES BY Dolce & Gabbana; HAIR ASHLEY HIGGINS

Lorri Sendel

[www.art-dept.com](http://www.art-dept.com)

# Art Department



Lorri Sendel

[www.art-dept.com](http://www.art-dept.com)



# Art Department



Lorri Sendel

[www.art-dept.com](http://www.art-dept.com)

# Art Department



Lorri Sendel

[www.art-dept.com](http://www.art-dept.com)



# Art Department



Lorri Sendel

[www.art-dept.com](http://www.art-dept.com)

# Art Department



Lorri Sendel

[www.art-dept.com](http://www.art-dept.com)



# Art Department



Lorri Sendel

[www.art-dept.com](http://www.art-dept.com)

# Art Department



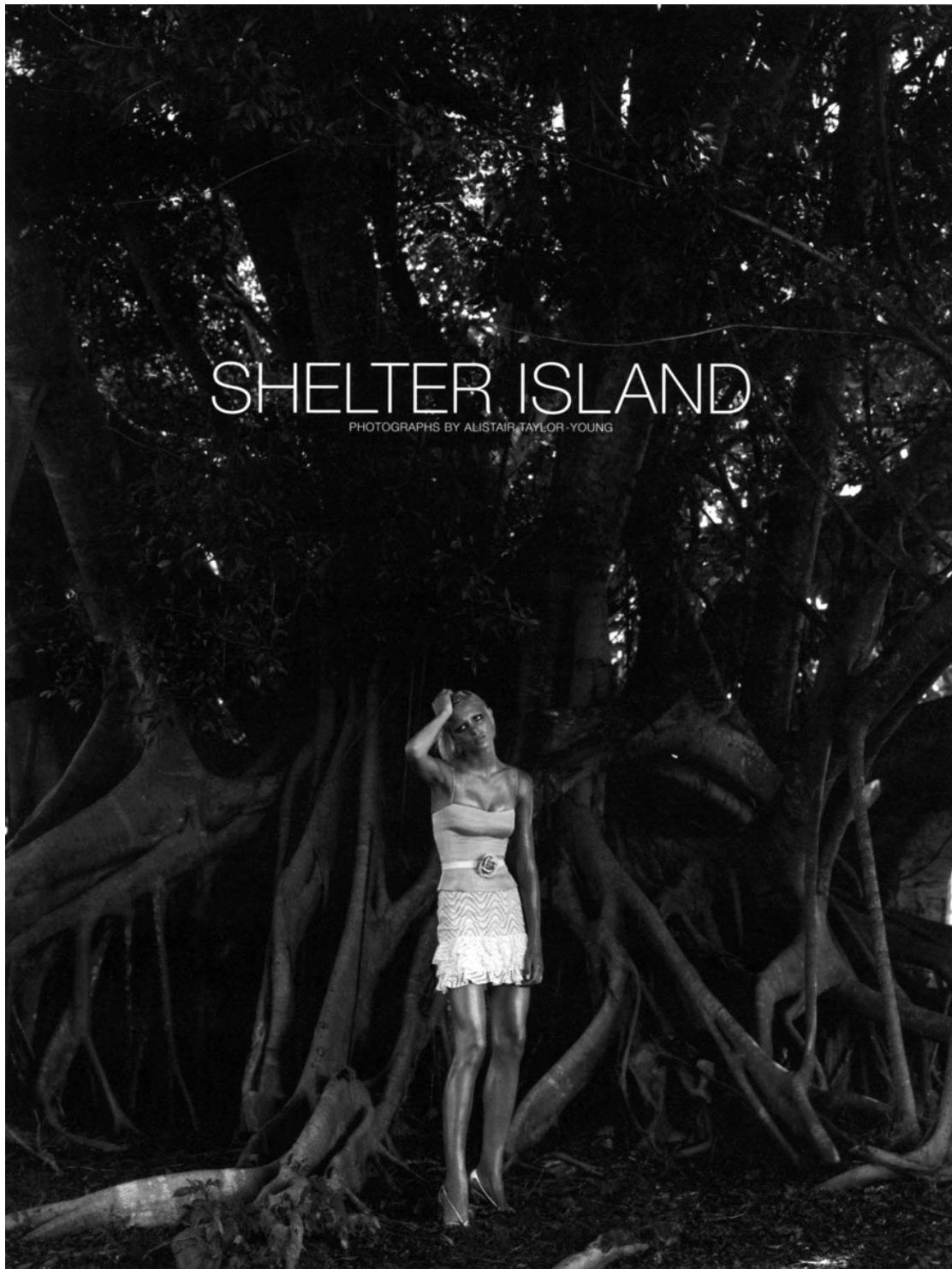
YVES SAINT LAURENT  
RIVE GAUCHE. Ruched  
zip-front hooded jacket in  
brown viscose silk. Matching  
front-seam straight skirt. Size:  
34-46. France, Second Floor.  
Jacket \$1,750 Skirt \$750

Lorri Sendel

[www.art-dept.com](http://www.art-dept.com)



# Art Department



Lorri Sendel

[www.art-dept.com](http://www.art-dept.com)

# Art Department

MARC JACOBS  
Sleeveless dress in black  
silk organza with organza  
slip. Lace insets at hem.  
Sizes 2-12. USA. Third  
Floor. Dress \$3,500

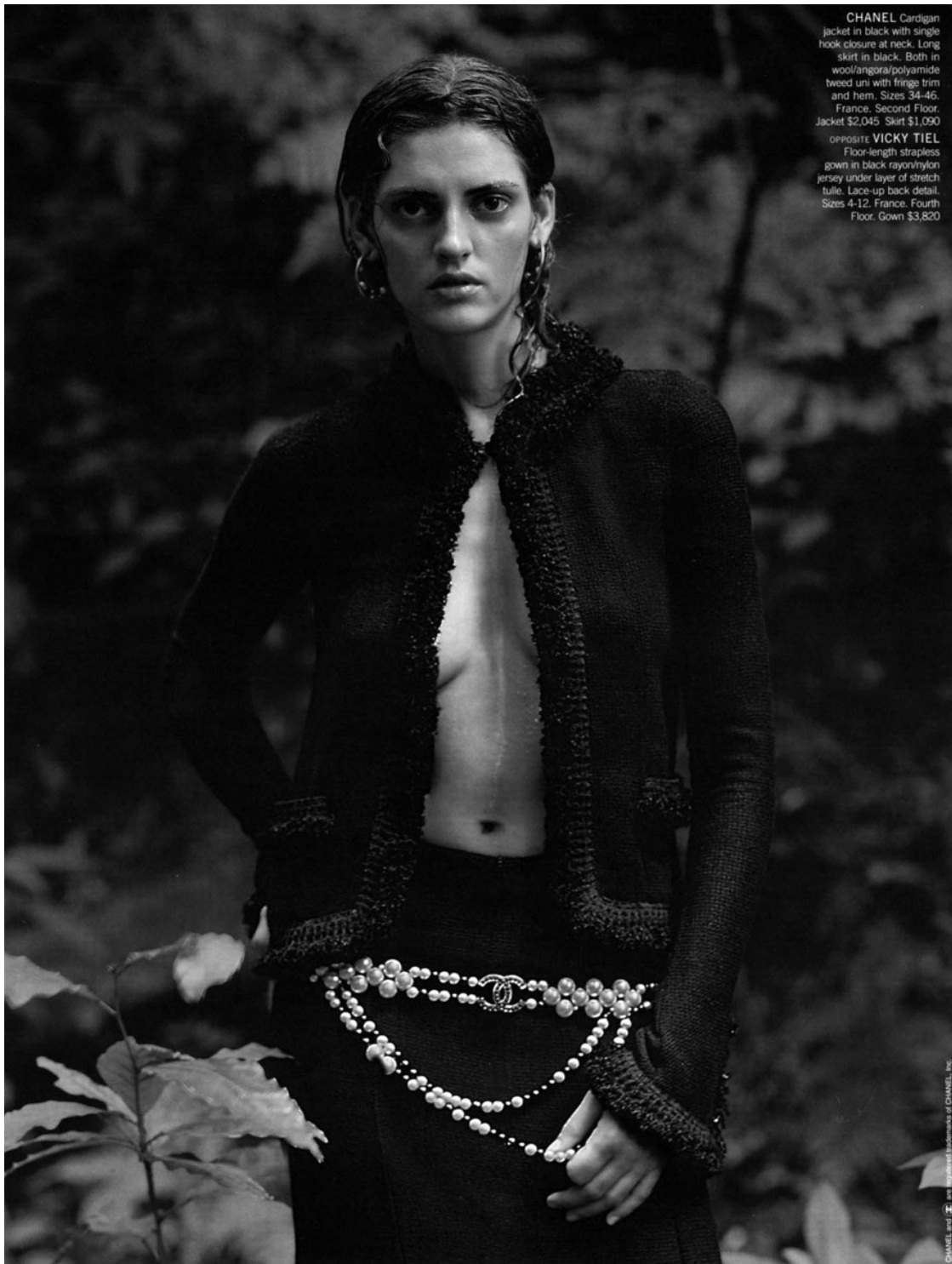


Lorri Sendel

[www.art-dept.com](http://www.art-dept.com)



# Art Department



CHANEL Cardigan jacket in black with single hook closure at neck. Long skirt in black. Both in wool/angora/polyamide tweed uni with fringe trim and hem. Sizes 34-46. France. Second Floor. Jacket \$2,045 Skirt \$1,090

OPPOSITE VICKY TIEL Floor-length strapless gown in black rayon/nylon jersey under layer of stretch tulle. Lace-up back detail. Sizes 4-12. France. Fourth Floor. Gown \$3,820

CHANEL and  are registered trademarks of CHANEL, Inc.

## Lorri Sendel

[www.art-dept.com](http://www.art-dept.com)

# Art Department



Lorri Sendel

[www.art-dept.com](http://www.art-dept.com)



# Art Department



CAROLINA HERRERA  
Halter gown in navy with white  
beaded neck and white tuxedo  
stripe accents. Size 4-12. Italy; made in USA.  
Fourth Floor. Gown \$3,290

Lorri Sendel

[www.art-dept.com](http://www.art-dept.com)

# Art Department



Lorri Sendel

[www.art-dept.com](http://www.art-dept.com)



# Art Department



Lorri Sendel

[www.art-dept.com](http://www.art-dept.com)

# Art Department



Lorri Sendel

[www.art-dept.com](http://www.art-dept.com)



# Art Department



Lorri Sendel

[www.art-dept.com](http://www.art-dept.com)

# Art Department



Lorri Sendel

[www.art-dept.com](http://www.art-dept.com)



# Art Department



Lorri Sendel

[www.art-dept.com](http://www.art-dept.com)

# Art Department



Lorri Sendel

[www.art-dept.com](http://www.art-dept.com)



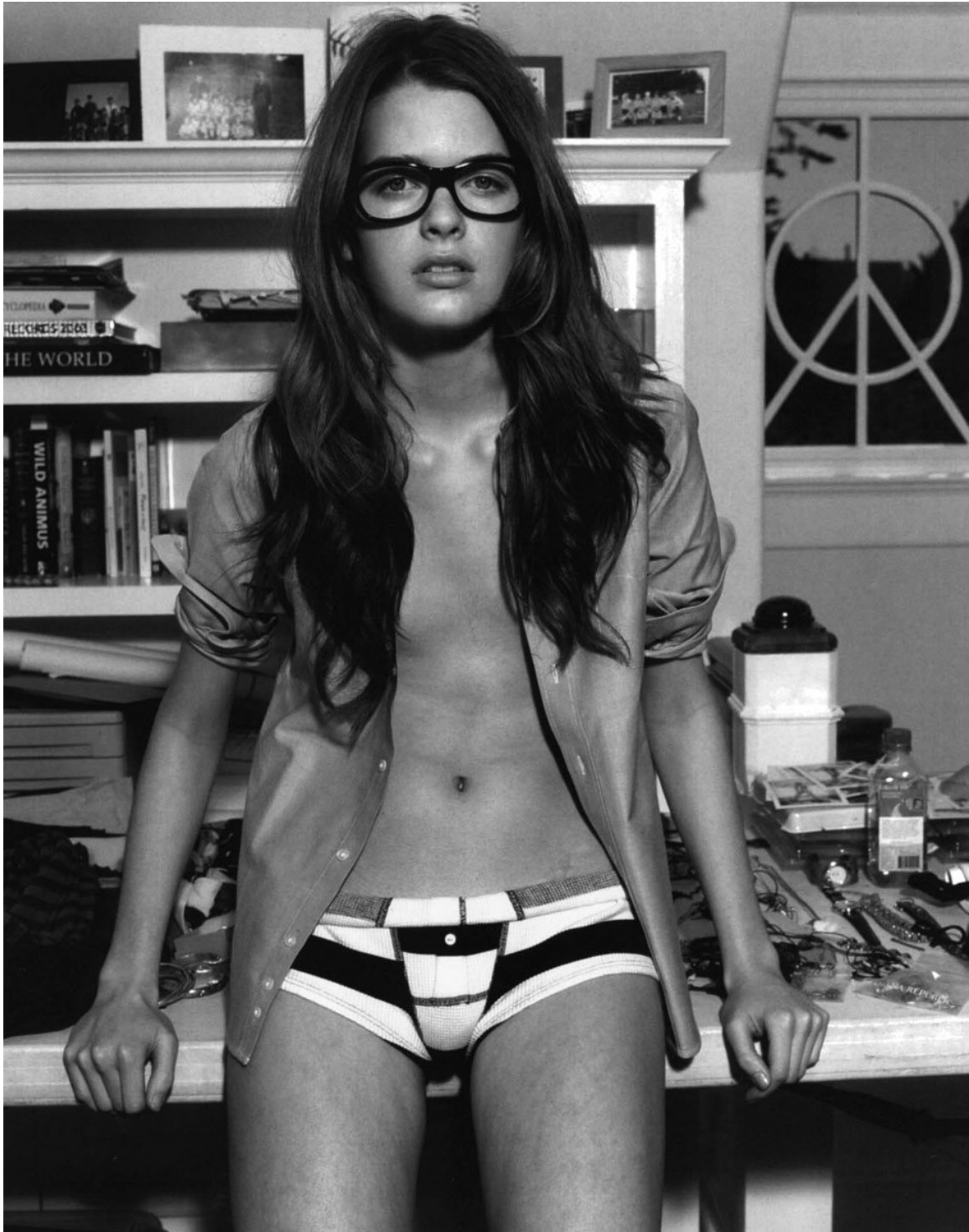
# Art Department



Lorri Sendel

[www.art-dept.com](http://www.art-dept.com)

# Art Department



Lorri Sendel

[www.art-dept.com](http://www.art-dept.com)



# Art Department



Lorri Sendel

[www.art-dept.com](http://www.art-dept.com)

# Art Department



Lorri Sendel

[www.art-dept.com](http://www.art-dept.com)



# Art Department



Lorri Sendel

[www.art-dept.com](http://www.art-dept.com)

# Art Department



Lorri Sendel

[www.art-dept.com](http://www.art-dept.com)



# Art Department



Lorri Sendel

[www.art-dept.com](http://www.art-dept.com)

# Art Department

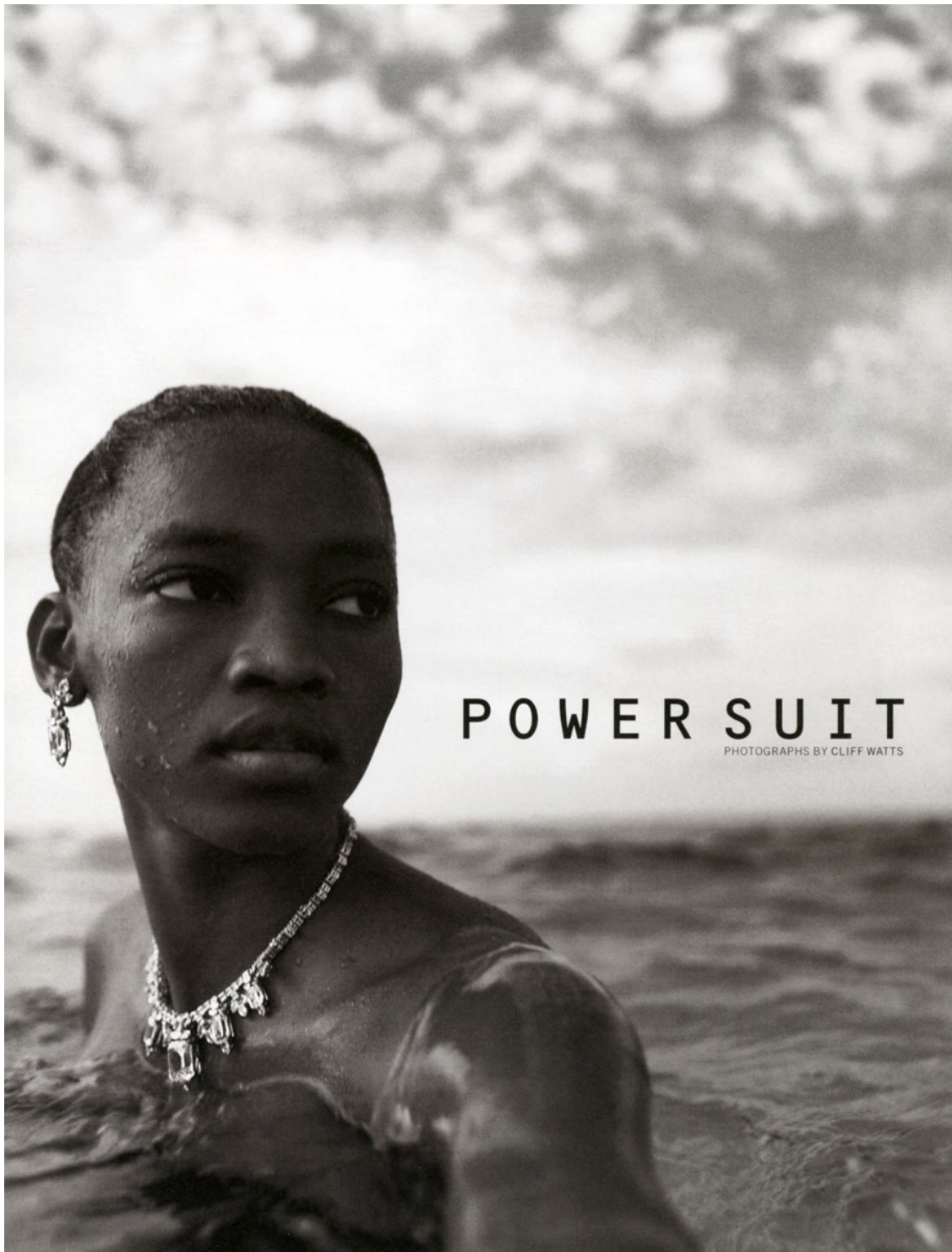


Lorri Sendel

[www.art-dept.com](http://www.art-dept.com)



# Art Department



Lorri Sendel

[www.art-dept.com](http://www.art-dept.com)

# Art Department



Lorri Sendel

[www.art-dept.com](http://www.art-dept.com)



# Art Department



**MISSONI** One-piece swimsuit in pink and purple. Halter silhouette with ruched detailing in back. Polyester/Lycra® spandex. Sizes 40-46. Italy. Third Floor. 72a Swimsuit \$275

**KENNETH JAY LANE** Faux coral and turquoise jewelry with Swarovski crystals. USA. Onbive. 72b Faux coral bracelet \$285. 72c Faux coral/turquoise bangle \$335. 72d Adjustable ring \$100

**OPPOSITE: MORGENTHAU-FREDERICS** "Georgette" sunglasses in cotton laminate gingham check. USA. A New Level of Beauty. 73a Sunglasses \$240

72 | 1 800 967 3788

## Lorri Sendel

[www.art-dept.com](http://www.art-dept.com)

# Art Department



**JEAN PAUL GAULTIER**

String bikini and kimono in orange, black and white eagle print. Bikini, polyester/Lycra®. Kimono, viscose. Sizes S,M,L. Italy. Third Floor. 64a Bikini \$165 64b Kimono \$495

**MAJUNGA** Market tote in yellow, green or orange straw weave. 12" high x 16" wide x 8" deep. Madagascar. On5ive. 64c Tote \$250

**SELIMA OPTIQUE**  
"Aristate" sunglasses in basic black. France. A New Level of Beauty™. 64d Sunglasses \$275

**OPPOSITE ROBERTO CAVALLI** Leather frame sunglasses in bronze with fabric wrap tie-back. Brown removable lenses. Perforated sequined string bikini in turquoise with black lining. Polyester/elastic. Sizes 40-46. Italy. Sunglasses, A New Level of Beauty. Bikini, Third Floor. 65a Sunglasses \$550 65b Bikini \$310

Lorri Sendel

[www.art-dept.com](http://www.art-dept.com)



# Art Department



62 | 1 800 967 3788

**YVES SAINT LAURENT**  
**RIVE GAUCHE** Terra-cotta  
napa leather shoulder bag with  
braided straps. 14" wide x  
25 1/2" high x 5" deep. Italy. First  
Floor. 62a Shoulder bag \$895

**OPPOSITE FANTASIA BY**  
**DESERIO** Cubic Zirconia™  
set in 22k white gold vermeil.

Necklace with round, oval  
and pear-shaped stones with  
ashen and emerald cut drops,  
diamond weight equivalent  
90 cts. Matching earrings,  
shown on page 58, diamond  
weight equivalent 23 cts. USA.

First Floor. 63a Necklace  
\$5,060 63b Earrings \$990

**TOMAS MAIER** Tankini in  
ruched black tulle. Polyamide/  
Lycra®. Sizes 36-42. France.  
Sixth Floor. 63c Swimsuit \$210

## Lorri Sendel

[www.art-dept.com](http://www.art-dept.com)

# Art Department



Lorri Sendel

[www.art-dept.com](http://www.art-dept.com)



# Art Department



Lorri Sendel

[www.art-dept.com](http://www.art-dept.com)



# Art Department



Lorri Sendel

[www.art-dept.com](http://www.art-dept.com)



# Art Department



Lorri Sendel

[www.art-dept.com](http://www.art-dept.com)