

Art Department



Lorri Sendel

www.art-dept.com

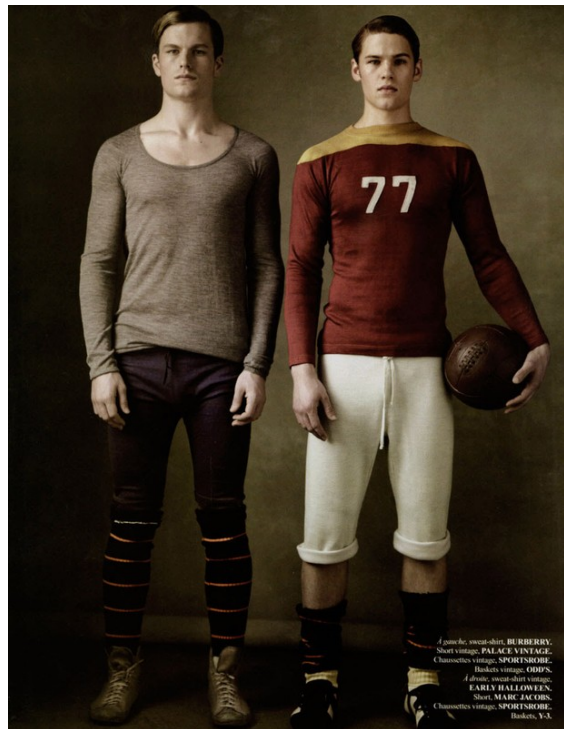
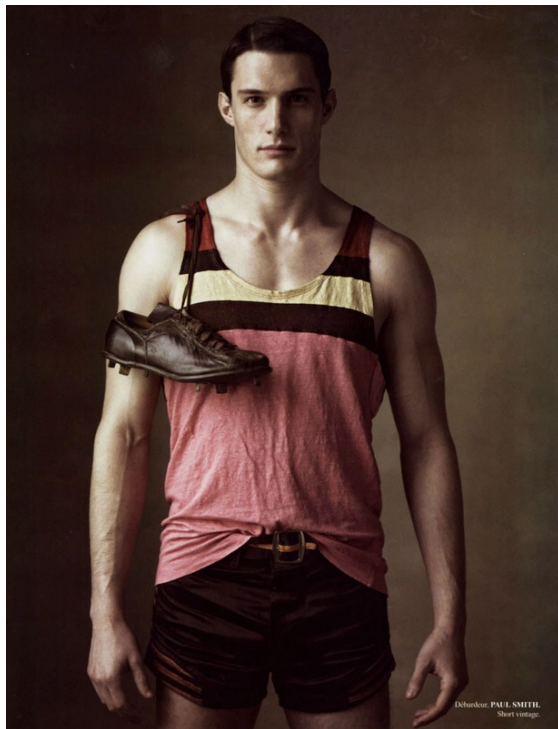
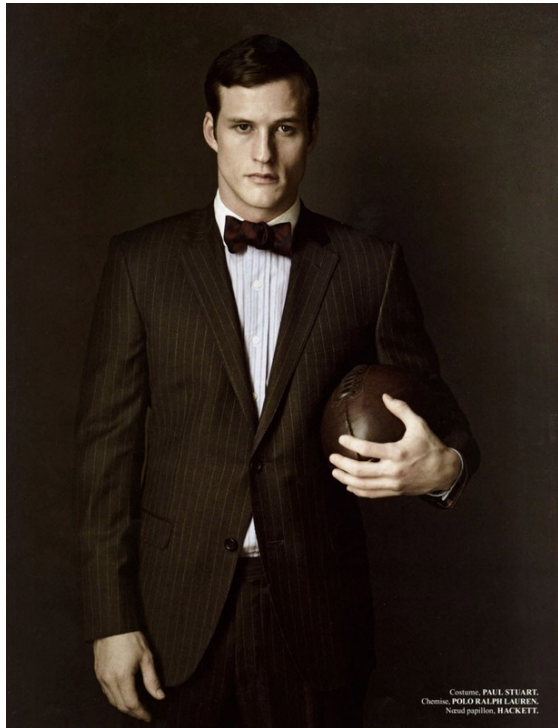
Art Department



Lorri Sendel

www.art-dept.com

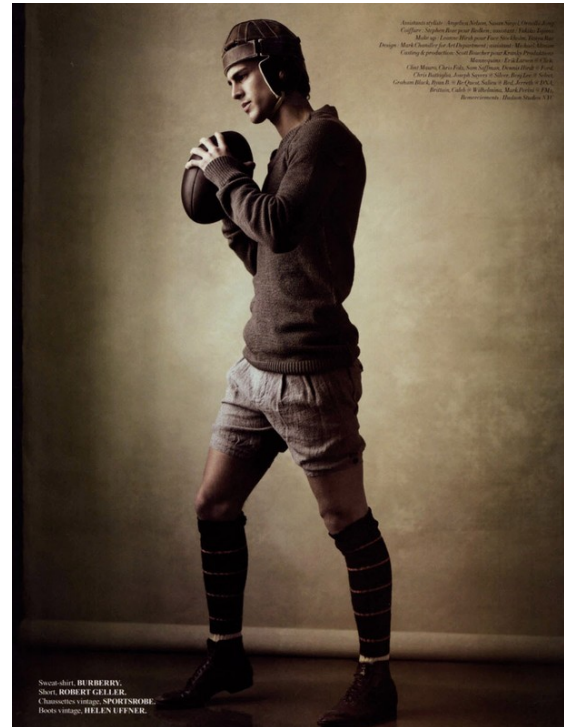
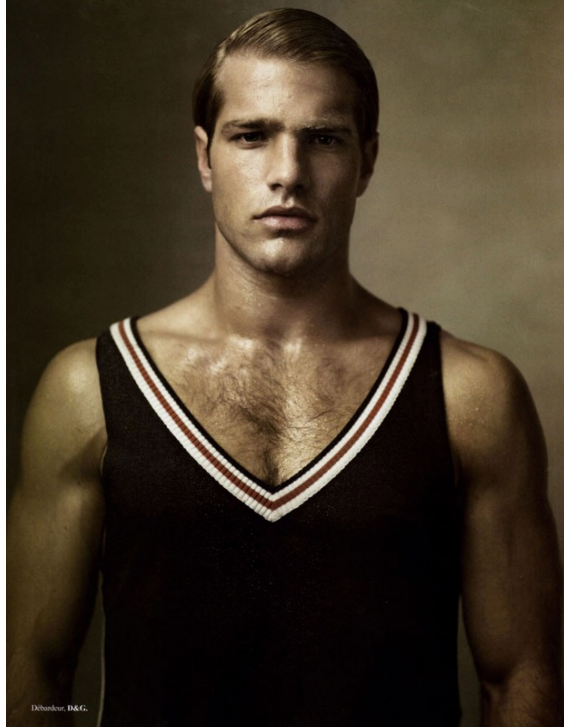
Art Department



Lorri Sendel

www.art-dept.com

Art Department



Lorri Sendel

www.art-dept.com

Art Department



Lorri Sendel

www.art-dept.com

Art Department



Lorri Sendel

www.art-dept.com

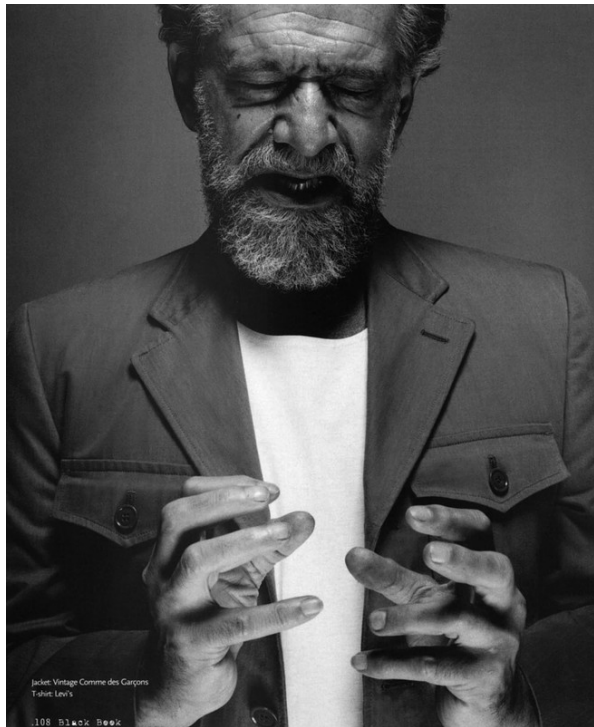
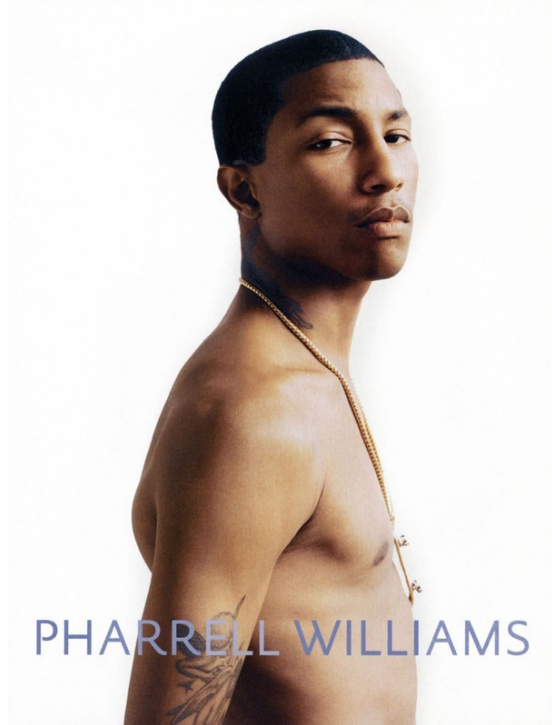
Art Department



Lorri Sendel

www.art-dept.com

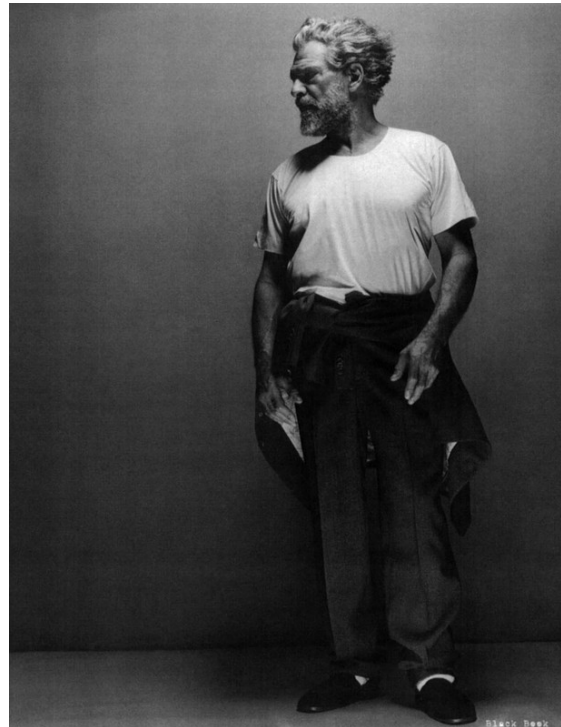
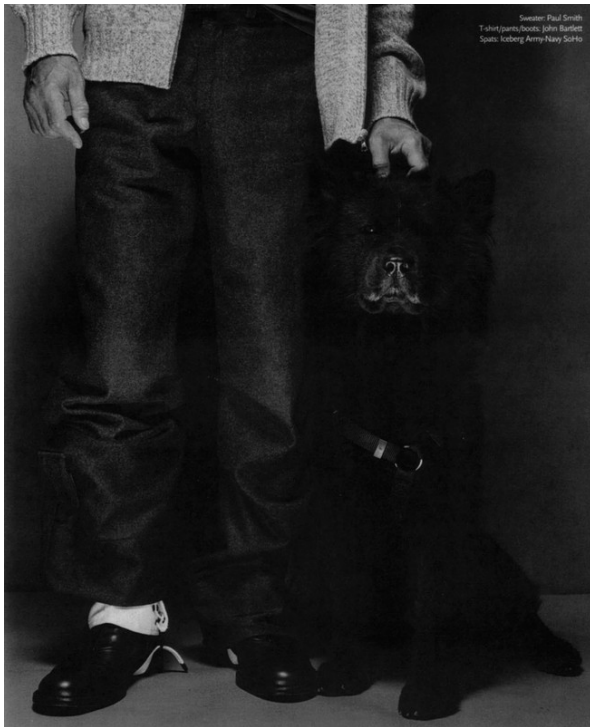
Art Department



Lorri Sendel

www.art-dept.com

Art Department



Lorri Sendel

www.art-dept.com

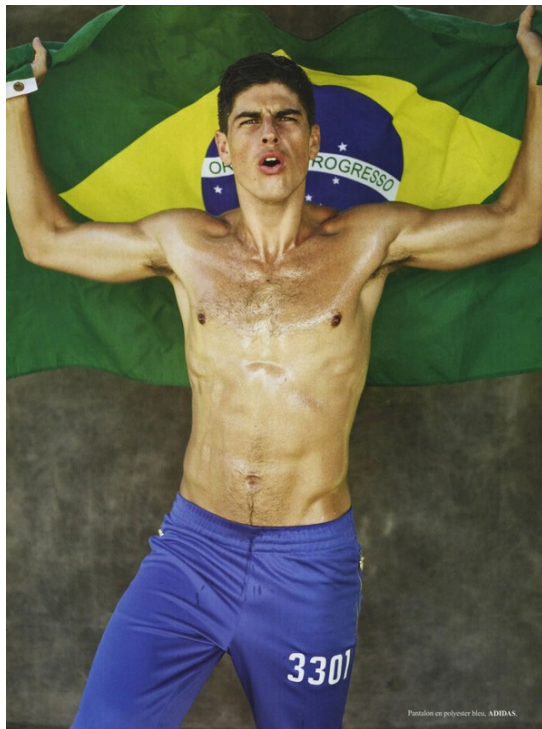
Art Department



Lorri Sendel

www.art-dept.com

Art Department



Lorri Sendel

www.art-dept.com

Art Department



Shot en syde-af, ROBERT GILLAR
Styling: J.J. AMERIK
Cinematografie: Eric de Wolf en blanches
ARRAS VINTAGE
Composant: V.N. FAGE
Proprietor: JIM BRACELLE
Régisseur: GILES S. HOFFMANN



Lorri Sendel

www.art-dept.com

Art Department



Lorri Sendel

www.art-dept.com