

# Art Department



Raytell Bridges

[www.art-dept.com](http://www.art-dept.com)

# Art Department



*On the Right  
Track*



Photographer: NELSON CASTILLO  
Stylist: RAYTELL BRIDGES  
Model: NICO LORENZO @ Willington NY Models  
Groomer: MICHAEL J. FERNANDEZ

RAYTELL

ISSUE 67

Directed by: Kenneth Wang  
Creative by: Issey Miyake  
Tailored by: Proda

## Raytell Bridges

[www.art-dept.com](http://www.art-dept.com)



# Art Department



## Raytell Bridges

[www.art-dept.com](http://www.art-dept.com)

# Art Department



Raytell Bridges

[www.art-dept.com](http://www.art-dept.com)



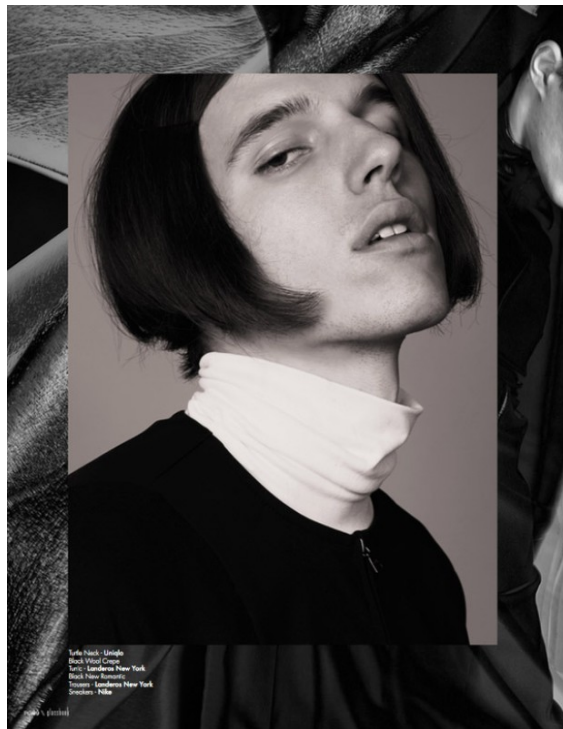
# Art Department



Raytell Bridges

[www.art-dept.com](http://www.art-dept.com)

# Art Department



Raytell Bridges

[www.art-dept.com](http://www.art-dept.com)

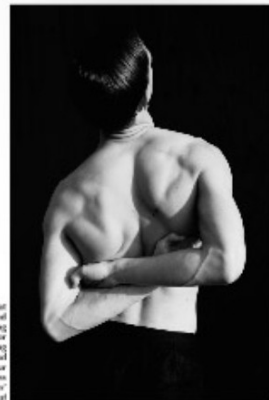


# Art Department



RAYTEL BRIDGES

14



Do you believe that your background — as a working architect — has had an effect on your design process and collection? Where, more of which does stem from twentieth-century architectural and art movements? You say much on why these are modern and modern spaces are only his enhanced my view and process in fashion but also on other fields.

The focus of a good architect extends beyond the building itself to recognize its impact on the space it inhabits, its uses and so on. Do you believe a similar ethos can apply to fashion?

Yes, design is psychology: spaces can evoke our feelings and change our moods, states, interactions and more. Fashion should do the same. This is good design.

When you first moved to New York, recreation was very much secondary to work with few smaller recreation designers working in the city. What attracted you to New York to start your label? Do you consider that the attention towards recreation has changed greatly since that time?

In general New York is not well supported in creating design, which was one of the reasons to start a brand here. There are many more recreation designers working in the city, and also more appropriate design more than ever before in the US.

Many of your designs, although serene and random, experiment with classical recreation and tailoring. How do you attempt to link your work with this modernity without becoming overly referential?

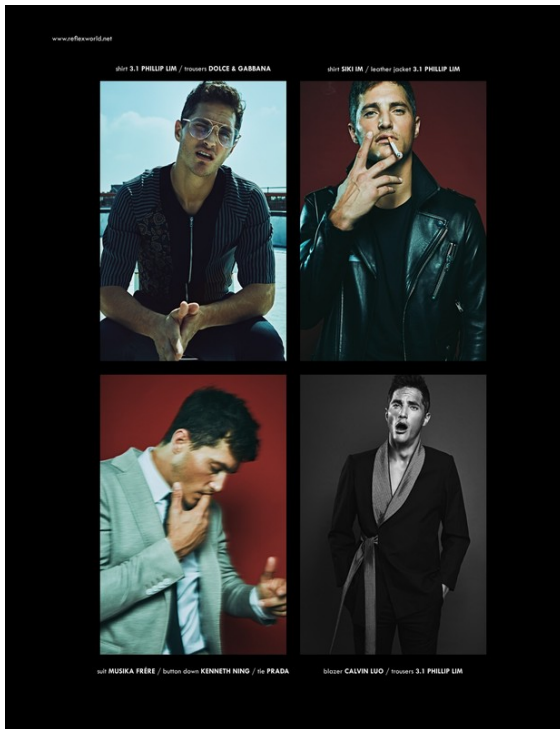
RAYTEL BRIDGES

15

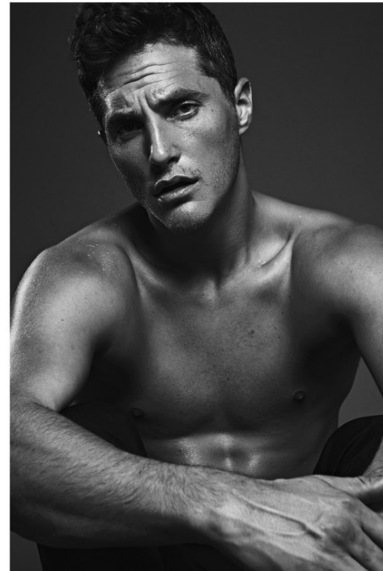
## Raytell Bridges

www.art-dept.com

# Art Department



REFLEX HOMME

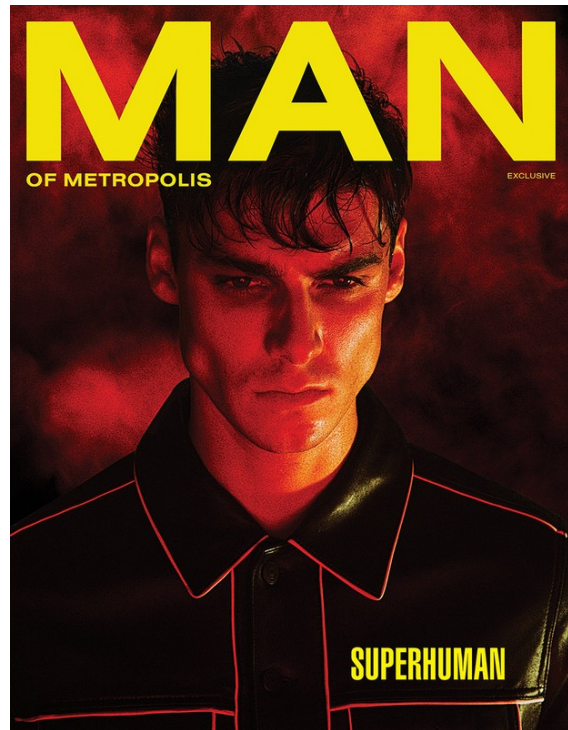


## Raytell Bridges

[www.art-dept.com](http://www.art-dept.com)



# Art Department



Raytell Bridges

# Art Department



Raytell Bridges

[www.art-dept.com](http://www.art-dept.com)



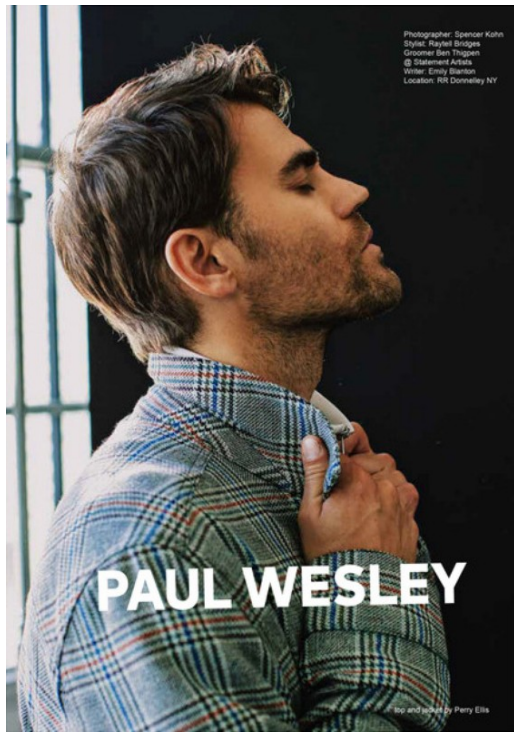
# Art Department



## Raytell Bridges

[www.art-dept.com](http://www.art-dept.com)

# Art Department



Raytell Bridges

[www.art-dept.com](http://www.art-dept.com)



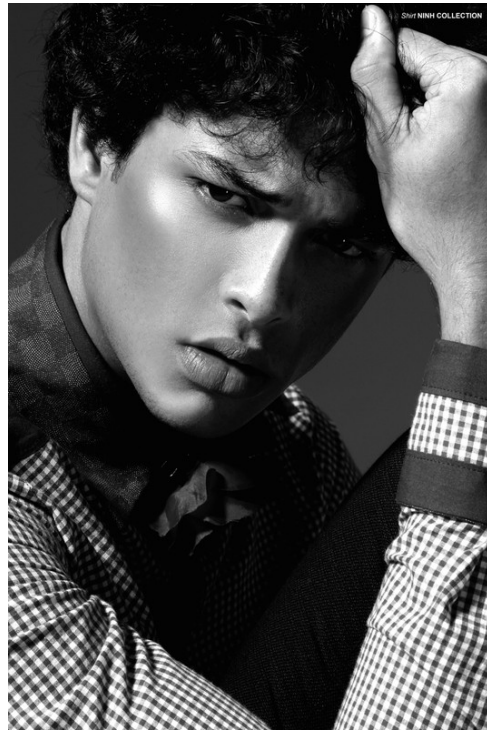
# Art Department



Raytell Bridges

[www.art-dept.com](http://www.art-dept.com)

# Art Department



**BB**  
**IN JAPAN**

PHOTOGRAPHY BY MARTIN BROWN © R AGENCY NY

58

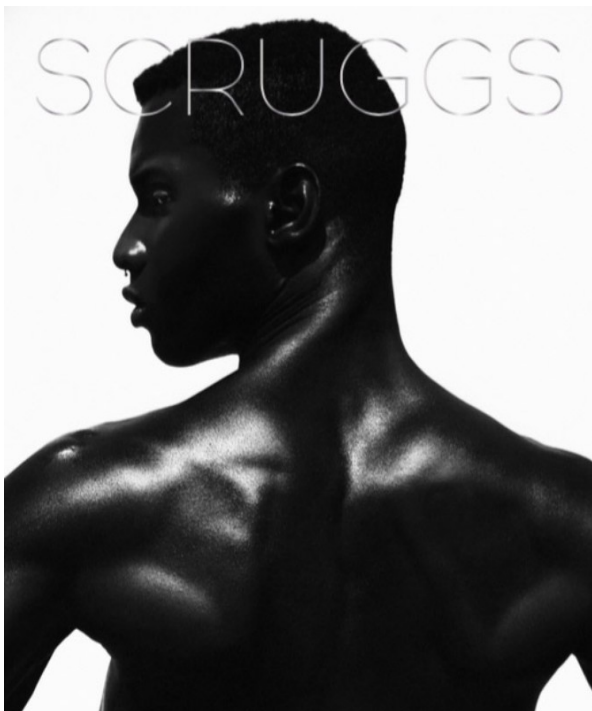


## Raytell Bridges

[www.art-dept.com](http://www.art-dept.com)



# Art Department



Raytell Bridges

[www.art-dept.com](http://www.art-dept.com)

# Art Department

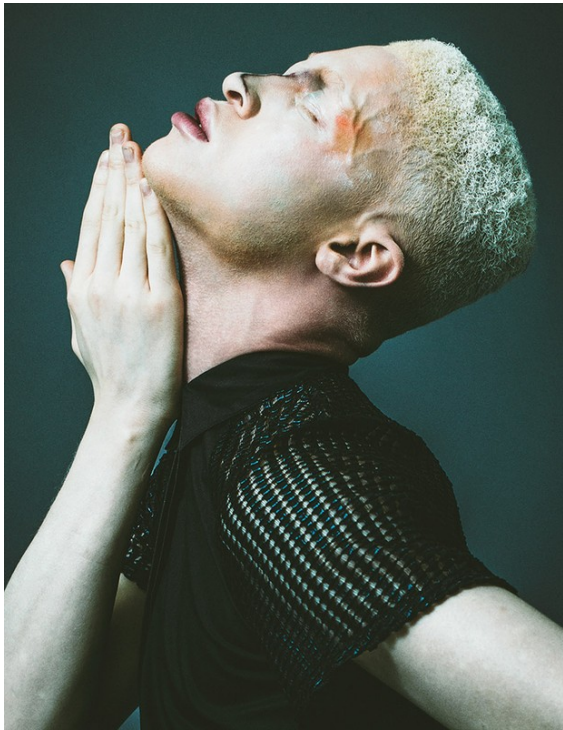


Raytell Bridges

[www.art-dept.com](http://www.art-dept.com)



# Art Department



Raytell Bridges

[www.art-dept.com](http://www.art-dept.com)

# Art Department



## Raytell Bridges

[www.art-dept.com](http://www.art-dept.com)



# Art Department



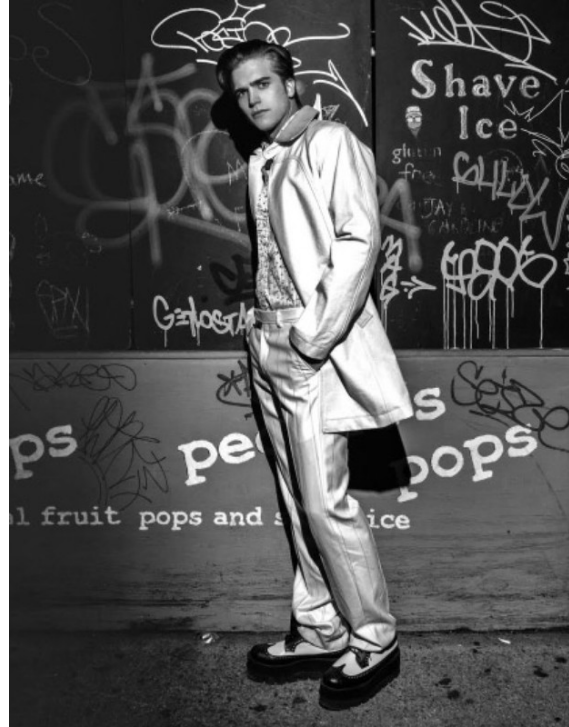
## Raytell Bridges

[www.art-dept.com](http://www.art-dept.com)





# Art Department



Raytell Bridges

[www.art-dept.com](http://www.art-dept.com)

# Art Department



FASHION

**LAWRENCE SAINT-VICTOR**  
*remember the name*

Words by Larysse Brown  
Photography by Keith Major  
Fashion by Alisha Crutchfield  
and Raytell Bridges for StyleWise

He's the latest African American actor to be casted in the CBS television soap opera, *The Bold and the Beautiful* (*B&B*). At 31, the Rockland County New York native is ripe for the picking as he's been welcomed back into the folds of the soap world with a fan base of millions following his 2009 departure from cancelled soap opera *Guiding Light*. Now, a wiser and evolved Saint-Victor chats with *Bleu* about his many roles as husband, actor, and writer. Yet he's set to dominate his latest role as the strong and willful character Carter Walton, lawyer to the super power Forrester family in *B&B*. >>

Stylist: WILLIAM MERTON  
Hair: EXPENSE

## Raytell Bridges

www.art-dept.com



# Art Department

**FASHION**

STYLING BY WILLIAM MESSON  
HAIR: LAURENCE  
WATCH: SPENNY TOP SHOP



**LAWRENCE SAINT-VICTOR**

Theater Arts and Film. It's up there with Juilliard. It's a four-year program. We trained and got our butts kicked! When I was working on Guiding Light I couldn't talk anyone while I was going to school there because it's against the rules to work while in school.

**WHAT DID YOU HOPE TO BECOME WHEN YOU GOT INTO ACTING? ARE YOU WHERE YOU'VE HOPED TO BE?**

When I first got into acting, it was a great time for black actors. We still had *The Best Man*, *Love Jones*, *Brown Sugar*, *Deaf Presidents*... Denzel Washington and Halle Berry had just got *Oscar*. Now, I still want to achieve all of that and more. I'm very interested in producing, directing and of course acting in some of my productions. I now produce and direct with my wife.

**WE KNOW WHAT YOUR LOVE LIFE LIKE IS LIKE AS CARTER BUT WHAT ABOUT AS LAWRENCE. WHEN DID YOU GET MARRIED?**

My wife became Shay Saint-Victor in 2007.

**WHEN DID YOU KNOW THAT SHE WAS IT?**

She inspires me so much. Just knowing that I have a support system and knowing that someone is proud of me but also won't let me off the hook if something I do is crappy. That's my inspiration.

**LAST QUESTION. WHERE DO YOU SEE YOUR CAREER GOING IN THE FUTURE?**

I want to have a flourishing production company. I really want to create moving pieces of art. I want to be acting in those pieces in others. I want to be Will Smith with a little Oprah sprinkled on top! ★



HAIR: DENZEL  
BY TITLE OF HONOR  
WATCH: SPENNY TOP SHOP

70 bleu magazine bleumagazine.com 71

PHOTOGRAPHY BY  
HELOISE REMELLE  
STYLING BY  
RAYTELL BRIDGES

## En Tandem

028

Form takes shape by placing heavy layers over classic staples. Sport-infused outerwear *en tandem* with turtlenecks; chemistry between shapes define a new silhouette of sleek.



# Raytell Bridges

www.art-dept.com

# Art Department



## Raytell Bridges

[www.art-dept.com](http://www.art-dept.com)