

# Art Department



Raytell Bridges

[www.art-dept.com](http://www.art-dept.com)

# Art Department



Raytell Bridges

[www.art-dept.com](http://www.art-dept.com)

# Art Department



Raytell Bridges

[www.art-dept.com](http://www.art-dept.com)



# Art Department



Raytell Bridges

[www.art-dept.com](http://www.art-dept.com)



# Art Department



Raytell Bridges

[www.art-dept.com](http://www.art-dept.com)

# Art Department



Raytell Bridges

[www.art-dept.com](http://www.art-dept.com)

# Art Department

On the Right  
Track

Photographer **NELSON CASTILLO**  
Stylist **RAYTELL BRIDGES**  
Model **NICO LORENZO** @ **Wilhelmina NY Models**  
Groomer **MICHAEL J. FERNANDEZ**

PIYAGUS



Overcoat by **Kenneth Cole**  
Sweater by **Issey Miyake**  
Turtleneck by **Prada**

ISSUE #7

## Raytell Bridges

[www.art-dept.com](http://www.art-dept.com)



# Art Department



Trench by Rafi & Olga  
Button Down by Dzoichen  
Turtleneck by Prada  
Trousers by Julius Lacour

PIVYBUS

## Raytell Bridges

[www.art-dept.com](http://www.art-dept.com)

# Art Department



Overcoat by Julianna Bass  
Fur Vest by Landeros New York  
Turtleneck by Prada

ISSUE #7

## Raytell Bridges

[www.art-dept.com](http://www.art-dept.com)



# Art Department



## Raytell Bridges

[www.art-dept.com](http://www.art-dept.com)



# Art Department



Raytell Bridges

[www.art-dept.com](http://www.art-dept.com)

# Art Department



Raytell Bridges

[www.art-dept.com](http://www.art-dept.com)



# Art Department



Raytell Bridges

[www.art-dept.com](http://www.art-dept.com)



# Art Department



Raytell Bridges

[www.art-dept.com](http://www.art-dept.com)

# Art Department



Raytell Bridges

[www.art-dept.com](http://www.art-dept.com)



# Art Department



Raytell Bridges

[www.art-dept.com](http://www.art-dept.com)



# Art Department



Raytell Bridges

[www.art-dept.com](http://www.art-dept.com)

# Art Department



Raytell Bridges

[www.art-dept.com](http://www.art-dept.com)



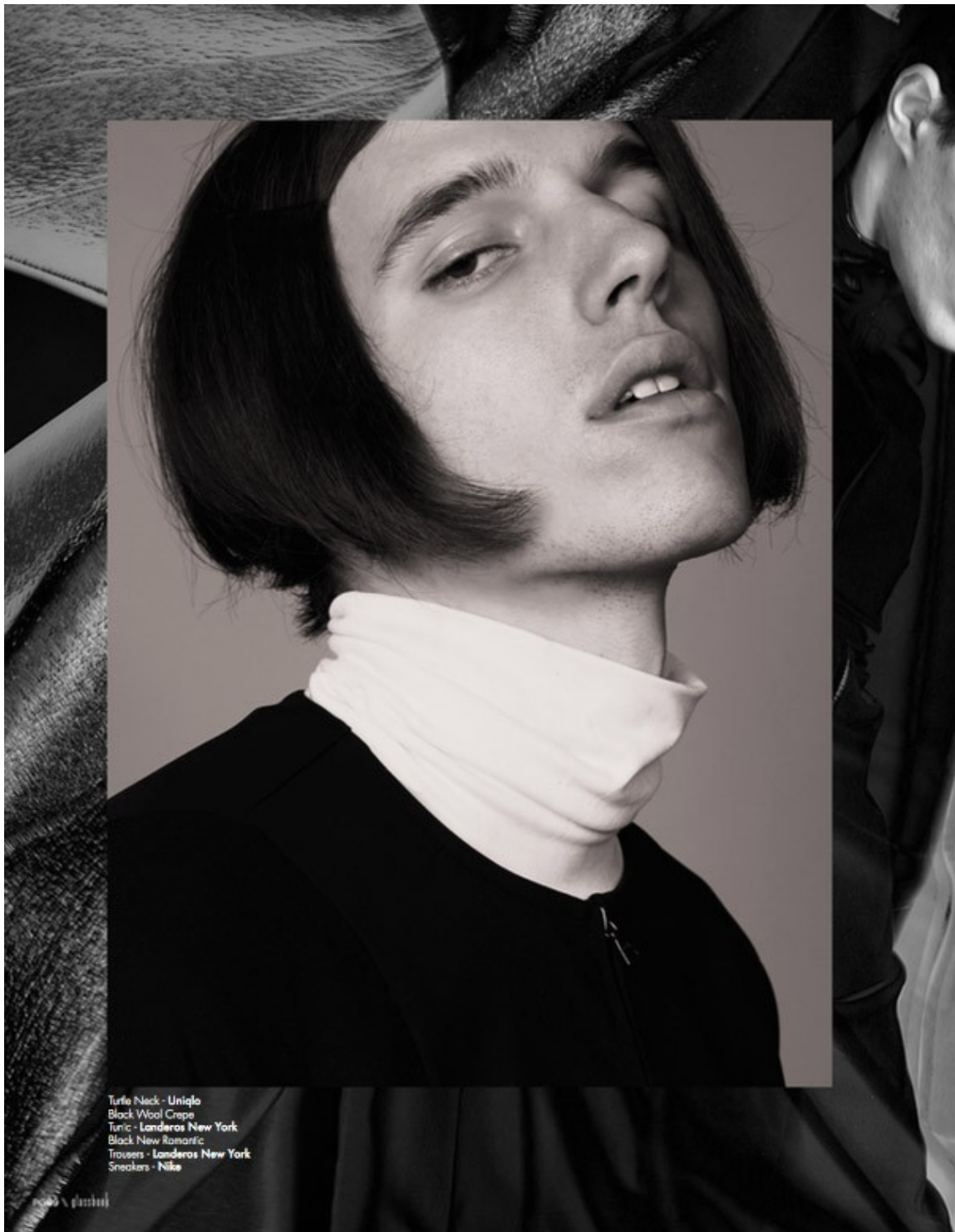
# Art Department



Raytell Bridges

[www.art-dept.com](http://www.art-dept.com)

# Art Department



Turtleneck - Uniqlo  
Black Wool Crepe  
Tunic - Landeros New York  
Black New Romantic  
Trousers - Landeros New York  
Sneakers - Nike

## Raytell Bridges

[www.art-dept.com](http://www.art-dept.com)



# Art Department



## Raytelle Bridges

[www.art-dept.com](http://www.art-dept.com)

# Art Department



RAY  
BRIDGES

14



Do you believe that your background – as a working architect prior to approaching fashion – has had an effect on your design process and collections' sources, many of which draw from twentieth-century architectural and art movements? Yes very much so. My love for modernity and modern spaces not only has influenced my view and process in fashion but also on other fields.

The focus of a good architect extends beyond the building itself to recognise its impact on the space it inhabits, its users and so on. Do you believe a similar ethos can apply to fashion?

Yes, design is psychology; spaces can evoke great feelings and change sociology, status, interactions and so on. Fashion should do the same. This is good design.

your label? Do you consider that the attention towards menswear has changed generally since that time?

In general New York is not well respected for interesting design, which was one of the reasons to start a brand here. There are so many more menswear designers (working today) and also men appreciate design more than ever before in the US.

Many of your designs, although urbane and modern, experiment with classical menswear and tailoring. How do you attempt to link your work with this modernity without becoming overly referential?

When you first moved to New York, menswear was very much secondary to women's wear with few smaller menswear designers working in the city. What attracted you to New York to start

15

RAY  
BRIDGES

## Raytell Bridges

[www.art-dept.com](http://www.art-dept.com)



# Art Department

www.reflexworld.net



# Ollie Edwards

photography: **CESAR BALCAZAR**  
styling: **RAYTELL BRIDGES**  
art director: **SHERI CHIU**  
make up: **JEZZ HILL**  
hair: **JHONATAN RENDON**  
photo assistant: **CHRISTIAN GIRALDO**  
model: **OLLIE EDWARDS** at **VNY MODELS**

shirt **SIKI IM** / leather jacket & jean **3.1 PHILLIP LIM**

## Raytell Bridges

www.art-dept.com

# Art Department

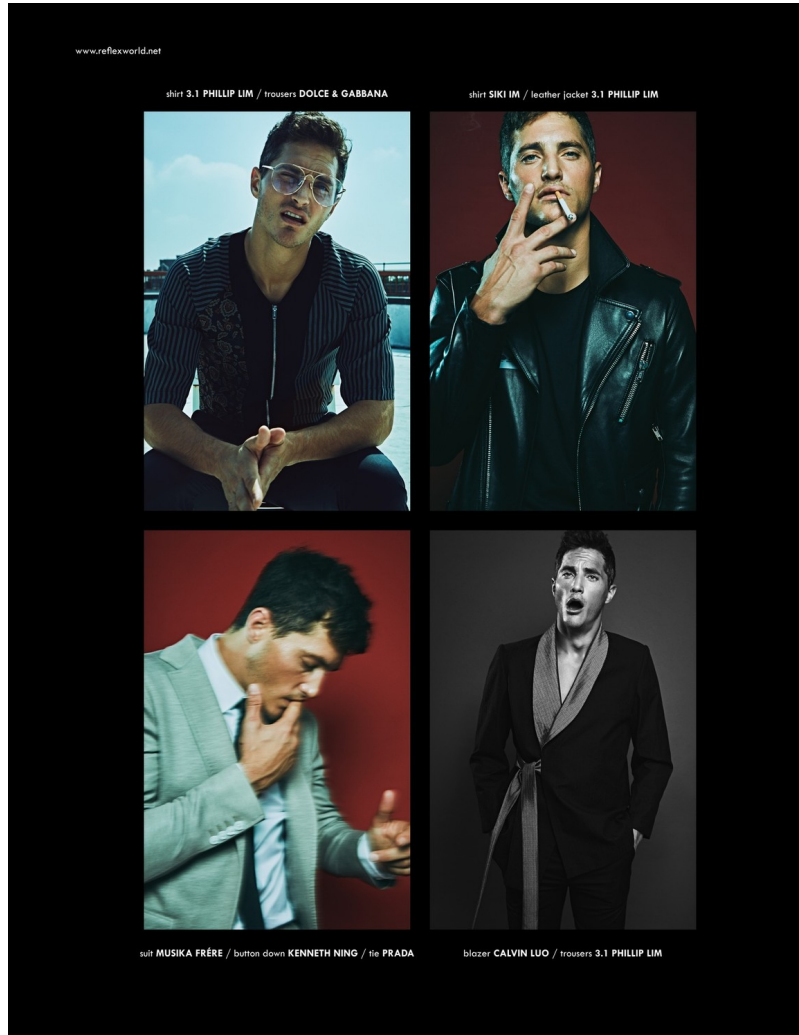


Raytell Bridges

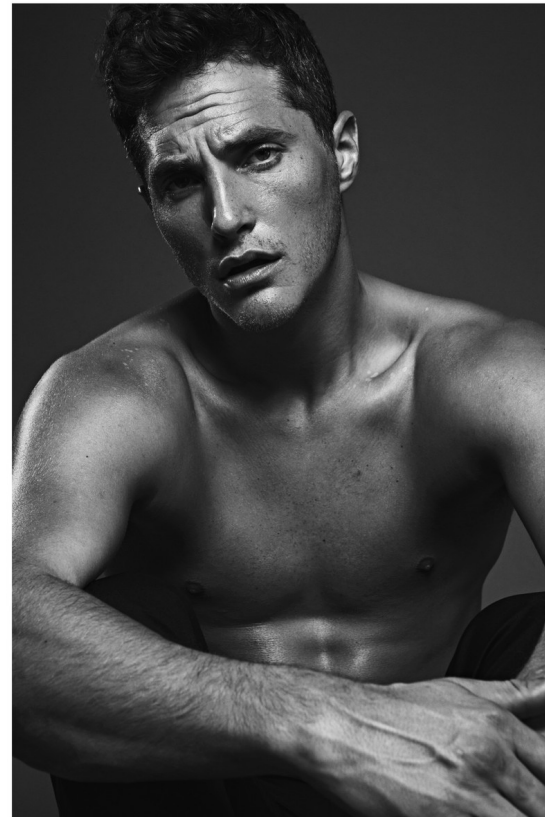
[www.art-dept.com](http://www.art-dept.com)



# Art Department



REFLEX HOMME



## Raytell Bridges

[www.art-dept.com](http://www.art-dept.com)

# Art Department

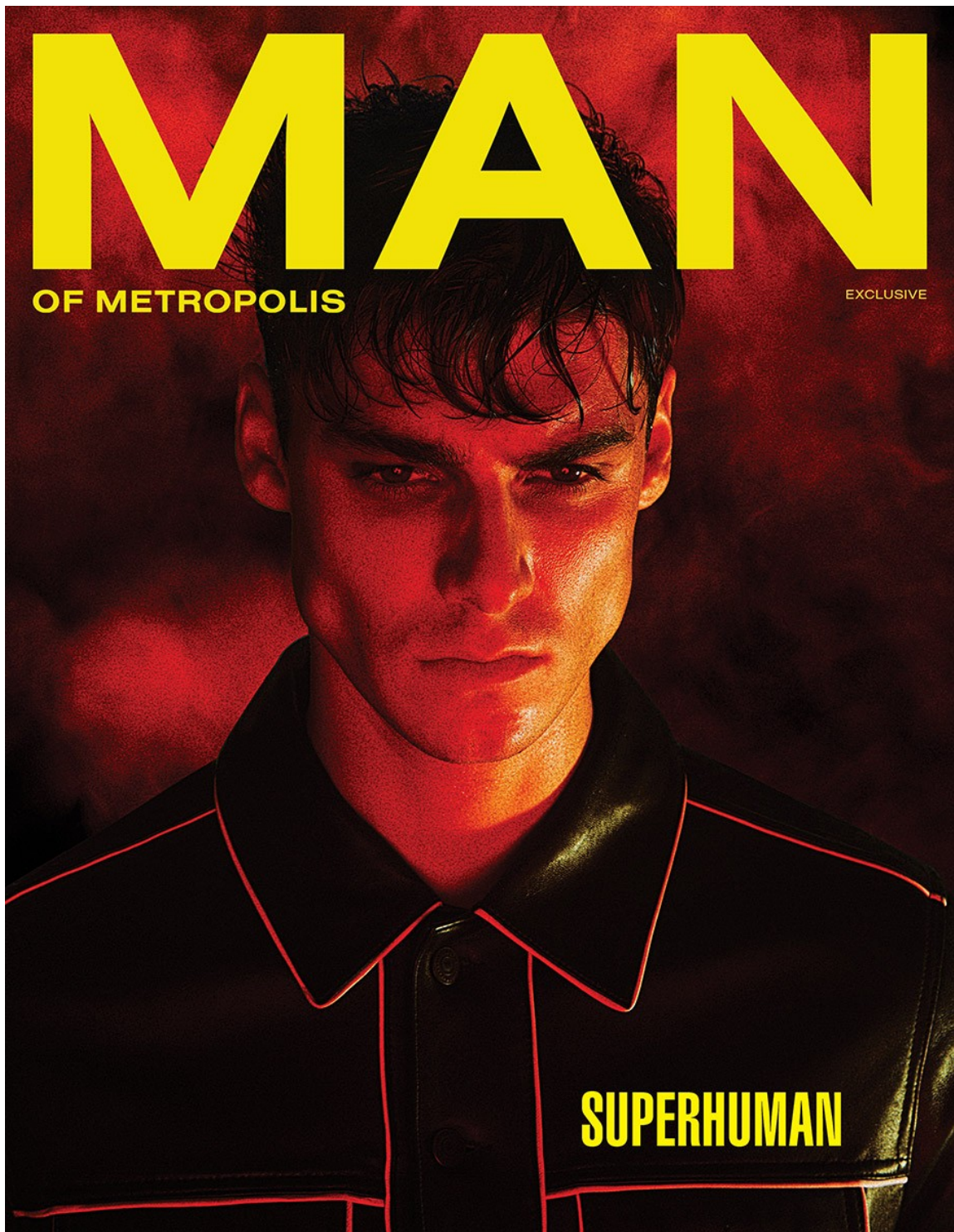


Raytell Bridges

[www.art-dept.com](http://www.art-dept.com)



# Art Department



Raytell Bridges

[www.art-dept.com](http://www.art-dept.com)

# Art Department



Raytell Bridges

[www.art-dept.com](http://www.art-dept.com)



# Art Department



Raytell Bridges

[www.art-dept.com](http://www.art-dept.com)

# Art Department



Raytell Bridges

[www.art-dept.com](http://www.art-dept.com)



# Art Department



## Raytell Bridges

[www.art-dept.com](http://www.art-dept.com)

# Art Department



Trousers, sweater, & turtleneck by LANDEROS NEW YORK.  
trench coat by ING.

## Raytell Bridges

[www.art-dept.com](http://www.art-dept.com)



# Art Department



Raytell Bridges

[www.art-dept.com](http://www.art-dept.com)

# Art Department

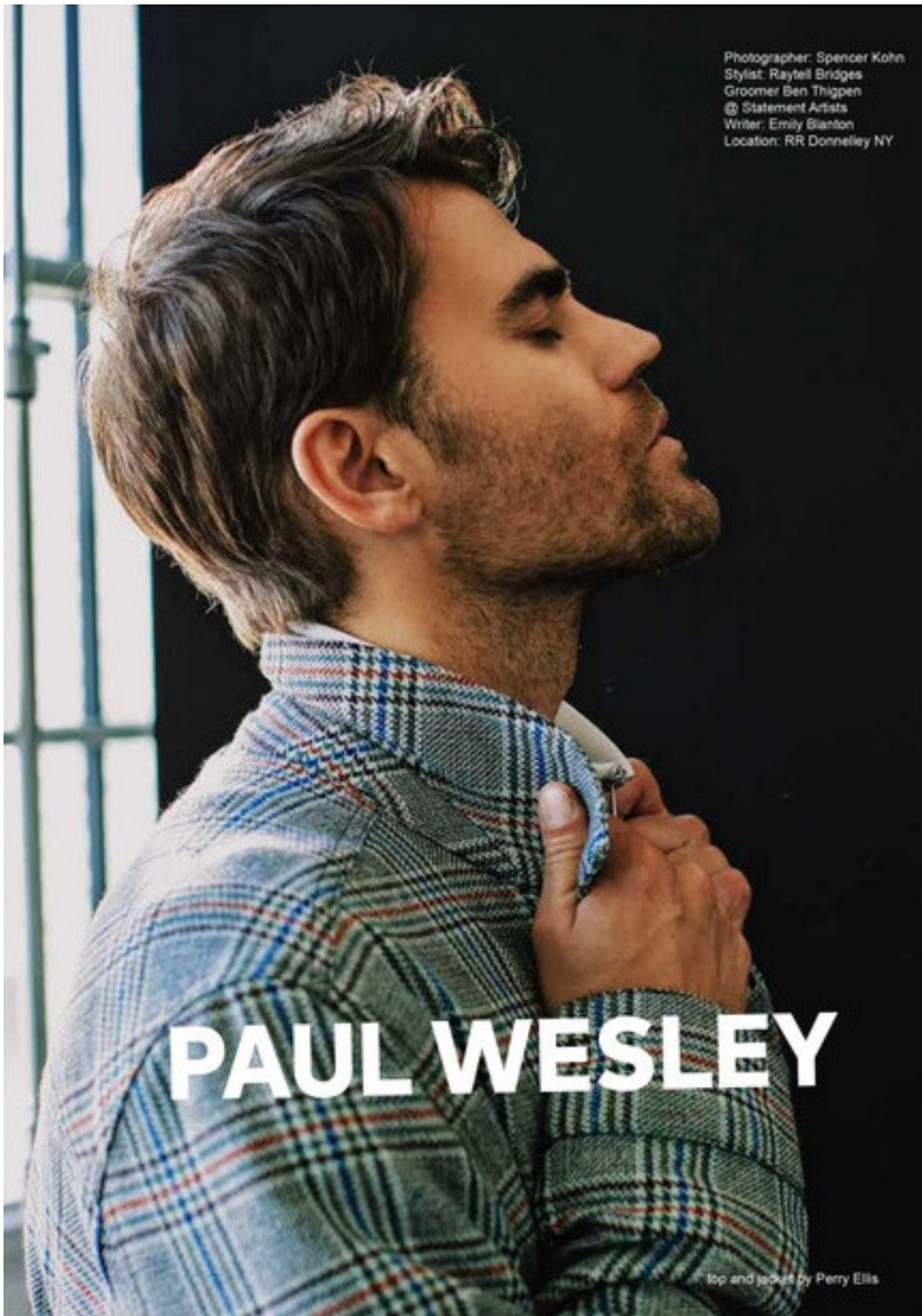


Raytell Bridges

[www.art-dept.com](http://www.art-dept.com)



# Art Department



Raytell Bridges

[www.art-dept.com](http://www.art-dept.com)

# Art Department



Raytell Bridges

[www.art-dept.com](http://www.art-dept.com)



# Art Department



Raytell Bridges

[www.art-dept.com](http://www.art-dept.com)

# Art Department



Raytell Bridges

[www.art-dept.com](http://www.art-dept.com)



# Art Department

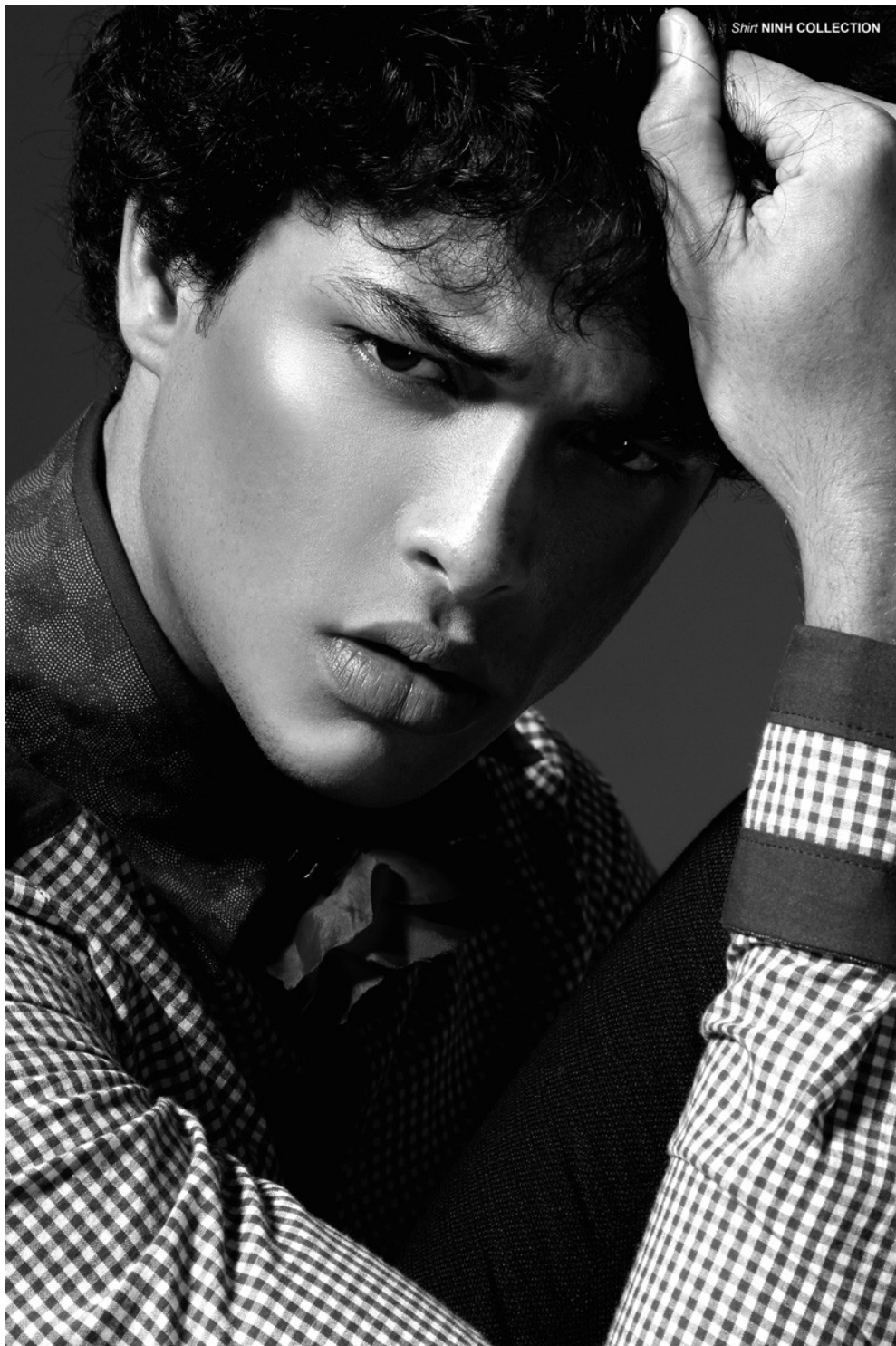
Shirt and Blazer NINH COLLECTION  
Tie DOLCE AND GABANNA  
Pants PRADA



Raytell Bridges

[www.art-dept.com](http://www.art-dept.com)

# Art Department



Raytell Bridges

[www.art-dept.com](http://www.art-dept.com)



# Art Department

**BB**  
**IN JAPAN**

PHOTOGRAPHY BY MARTIN BROWN © R AGENCY NY

58



Raytell Bridges

[www.art-dept.com](http://www.art-dept.com)



# Art Department



Raytell Bridges

[www.art-dept.com](http://www.art-dept.com)

# Art Department

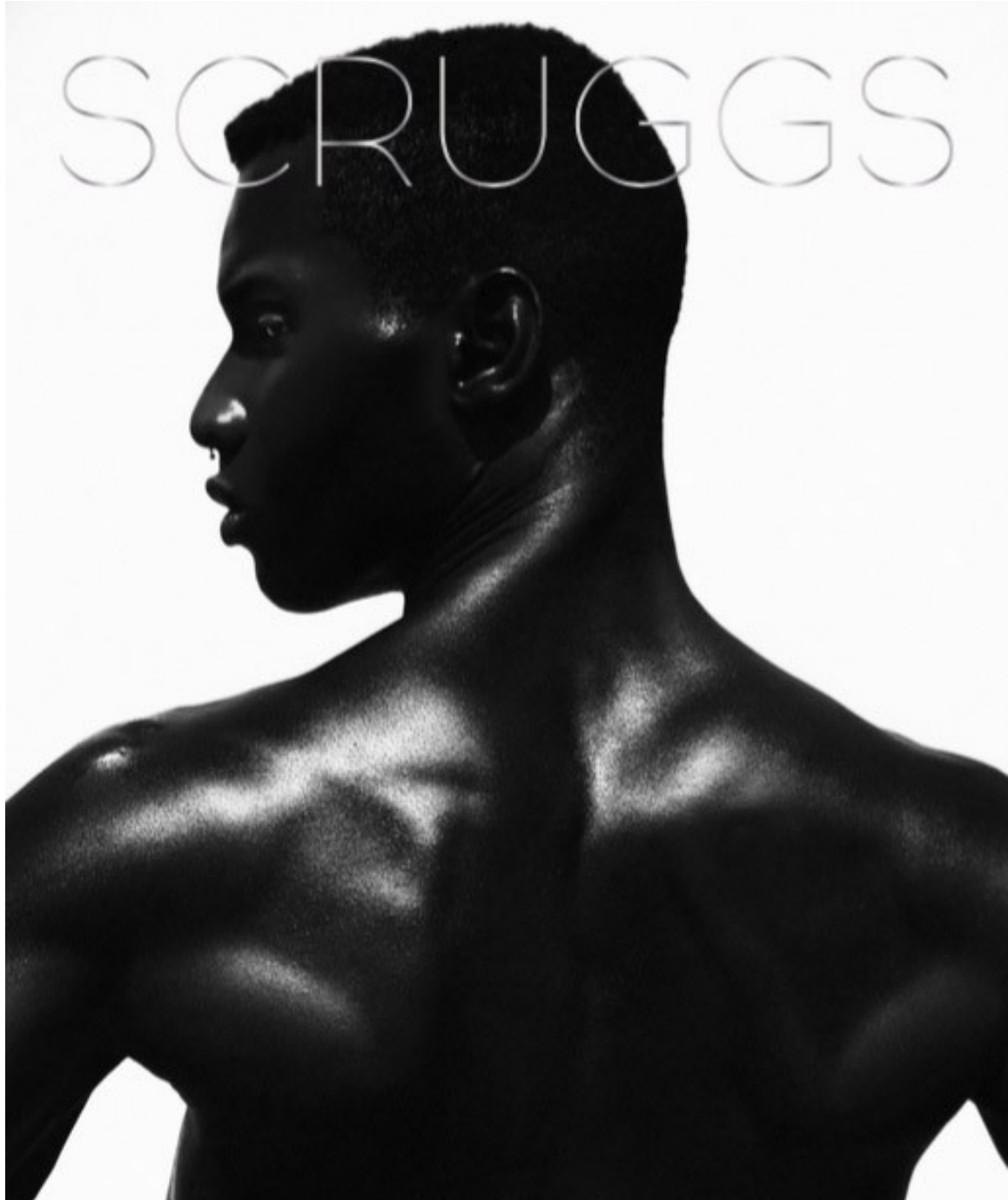
WOOL BLAZER JANET ZHENG  
SHIRT CARLOS CAMPOS  
TROUSERS PHILLIP PLEIN  
SHOES LONG TRAN



## Raytell Bridges

[www.art-dept.com](http://www.art-dept.com)

# Art Department



Raytell Bridges

[www.art-dept.com](http://www.art-dept.com)



# Art Department



Raytell Bridges

[www.art-dept.com](http://www.art-dept.com)

# Art Department



045

Raytell Bridges

[www.art-dept.com](http://www.art-dept.com)

# Art Department



Raytell Bridges

[www.art-dept.com](http://www.art-dept.com)



# Art Department



016

Raytell Bridges

[www.art-dept.com](http://www.art-dept.com)

# Art Department



Raytell Bridges

[www.art-dept.com](http://www.art-dept.com)

# Art Department



Raytell Bridges

[www.art-dept.com](http://www.art-dept.com)



# Art Department



Raytell Bridges

[www.art-dept.com](http://www.art-dept.com)

# Art Department



Raytell Bridges

[www.art-dept.com](http://www.art-dept.com)



# Art Department



Raytell Bridges

[www.art-dept.com](http://www.art-dept.com)



# Art Department



Raytell Bridges

[www.art-dept.com](http://www.art-dept.com)

# Art Department

coat **STEPHEN F**  
sweater dress **MAX N CHESTER**  
turtleneck **UNIQLO**  
trousers **WOODHOUSE**



## Raytell Bridges

[www.art-dept.com](http://www.art-dept.com)



# Art Department



Raytell Bridges

[www.art-dept.com](http://www.art-dept.com)



# Art Department



Raytell Bridges

[www.art-dept.com](http://www.art-dept.com)

# Art Department



*Carson (R)*  
Cafan and Trench: Daniel Gregory Natale  
Turtleneck: Uniqlo  
Shirt: Yurie Lim

*Miles (L)*  
Vest: Daniel Gregory Natale  
Trench: Fingers Crossed  
Shirt: Yurie Lim  
Trousers: Fingers Crossed

## Raytell Bridges

[www.art-dept.com](http://www.art-dept.com)



# Art Department

Vest, Shirt, and Shorts:  
Daniel Gregory Natale  
Turtleneck: Uniqlo



## Raytell Bridges

[www.art-dept.com](http://www.art-dept.com)



# Art Department

trench **PALMIERS DU MAL**  
trousers **DZOJCHEN**  
scarf **STYLIST'S OWN**  
socks **UNIQLO**  
shoes **TUK**



photo **PATRICK LACSINA** styling **RAYTELL BRIDGES**

makeup **HEITH CHANEL** (KETT COSMETICS) hair **AKIHISA YAMAGUCHI** (AMIKA HAIR CARE) model **SAM LUNDQUIST** (DNA)

## Raytell Bridges

[www.art-dept.com](http://www.art-dept.com)

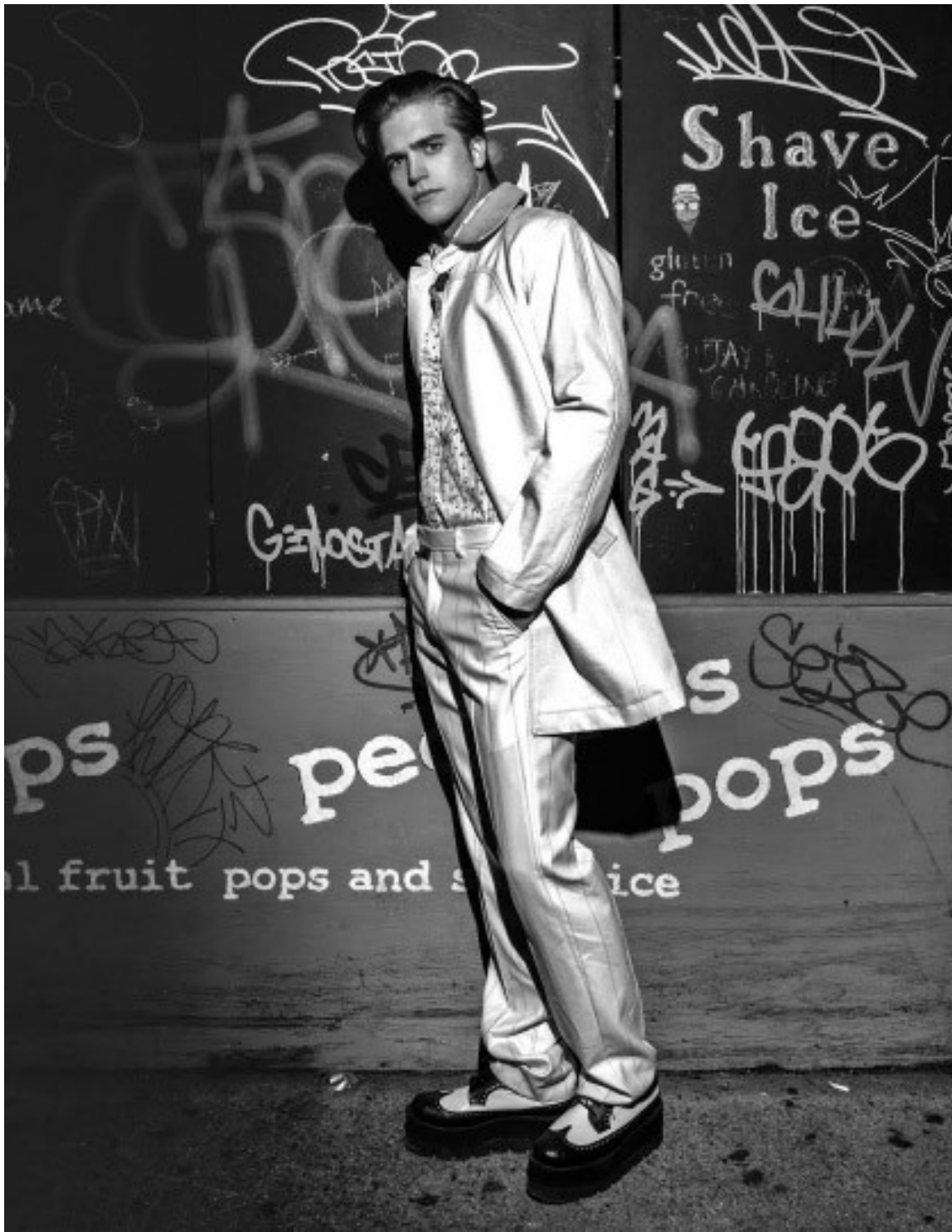
# Art Department



Raytell Bridges

[www.art-dept.com](http://www.art-dept.com)

# Art Department



Raytell Bridges

[www.art-dept.com](http://www.art-dept.com)



# Art Department



Raytell Bridges

[www.art-dept.com](http://www.art-dept.com)

# Art Department



Raytell Bridges

[www.art-dept.com](http://www.art-dept.com)

# Art Department



Raytell Bridges

[www.art-dept.com](http://www.art-dept.com)



# Art Department

FASHION

A close-up portrait of actor Lawrence Saint-Victor, looking slightly to the left. He is wearing a dark grey textured jacket over a maroon shirt and tie. The background is dark and out of focus.

## LAWRENCE SAINT-VICTOR

*remember the name*

Words by Larryse Brown  
Photography by Keith Major  
Fashion by Alisha Crutchfield  
and Raytell Bridges for StyleWise

He's the latest African American actor to be casted in the CBS television soap opera, *The Bold and the Beautiful (B&B)*. At 31, the Rockland County New York native is ripe for the picking as he's been welcomed back into the folds of the soap world with a fan base of millions following his 2009 departure from cancelled soap opera *Guiding Light*. Now, a wiser and evolved Saint-Victor chats with Bleu about his many roles as husband, actor, and writer. Yet he's set to dominate his latest role as the strong and willful character Carter Walton, lawyer to the super power Forrester family in *B&B*. >>

Styler: WILLIAM WATSON  
Hair: EXPRESS

## Raytell Bridges

[www.art-dept.com](http://www.art-dept.com)

# Art Department

FASHION



coat & pants WILLIAM MATSON  
shirt UNWIND  
watch SPERRY TOP SIDER

LAWRENCE SAINT-VICTOR

Theater Arts and Film. It's up there with Juilliard. It's a four-year program. We trained and got our butts kicked! When I was working on *Guiding Light* I couldn't tell anyone while I was going to school there because it's against the rules to work while in you were in school.

**WHAT DID YOU HOPE TO BECOME WHEN YOU GOT INTO ACTING? ARE YOU WHERE YOU'VE HOPED TO BE?**

When I first got into acting, it was a great time for black actors. We still had *The Best Man*, *Love Jones*, *Brown Sugar*, *Dead Presidents*... Denzel Washington and Halle Berry had just got Oscars! Now, I still want to achieve all of that and more. I'm very interested in producing, directing and of course acting in some of my productions. I now produce and direct with my wife.

**WE KNOW WHAT YOUR LOVE LIFE LIKE IS LIKE AS CARTER BUT WHAT ABOUT AS LAWRENCE. WHEN DID YOU GET MARRIED?**

My wife became Shay Saint-Victor in 2007.

**WHEN DID YOU KNOW THAT SHE WAS IT?**

She inspires me so much. Just knowing that I have a support system and knowing that someone is proud of me but also won't let me off the hook if something I do is crappy. That's my inspiration.

**LAST QUESTION. WHERE DO YOU SEE YOUR CAREER GOING IN THE FUTURE?**

I want to have a flourishing production company. I really want to create moving pieces of art. I want to be acting in those pieces in others. I want to be Will Smith with a little Oprah sprinkled on top! ★



shirt BENSON  
tie TITLE OF WORK  
watch SPERRY TOP SIDER

## Raytell Bridges

www.art-dept.com

# Art Department

PHOTOGRAPHY BY  
NEKOLE KEMELLE  
STYLING BY  
RAYTELL BRIDGES

## En Tandem

028

Form takes shape by placing heavy layers over classic staples. Sport-infused outerwear *en tandem* with turtlenecks; chemistry between shapes define a new silhouette of sleek.



TRENCH COAT  
THADEUS ONEIL  
NEOPRENE VEST  
LANDEROS NEW YORK  
TRENCH COAT  
THADEUS ONEIL

CALEO MAGAZINE  
AUTUMN/WINTER 2015-16

## Raytell Bridges

[www.art-dept.com](http://www.art-dept.com)



# Art Department

RIGHT JACKET & SHORTS  
QU SIYING

SHOES  
TUK

LEFT NEOPRENE BOMBER  
N-P ELLIOTT

SWEATER  
QU SIYING

SHIRT  
ALEXANDRE PLOKHOV

SHORTS  
N-P ELLIOTT



031

## Raytell Bridges

[www.art-dept.com](http://www.art-dept.com)

# Art Department



Raytell Bridges

[www.art-dept.com](http://www.art-dept.com)



# Art Department



Raytell Bridges

[www.art-dept.com](http://www.art-dept.com)