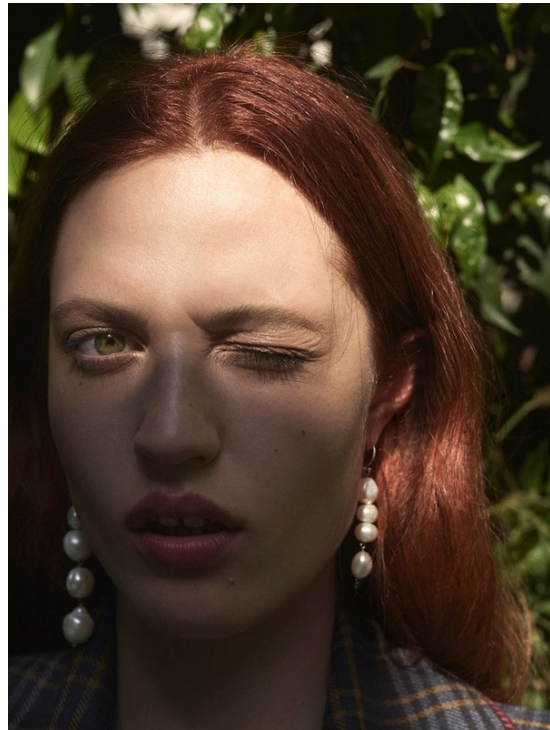


Art Department



Samantha Traina

www.art-dept.com

Art Department



Samantha Traina

www.art-dept.com

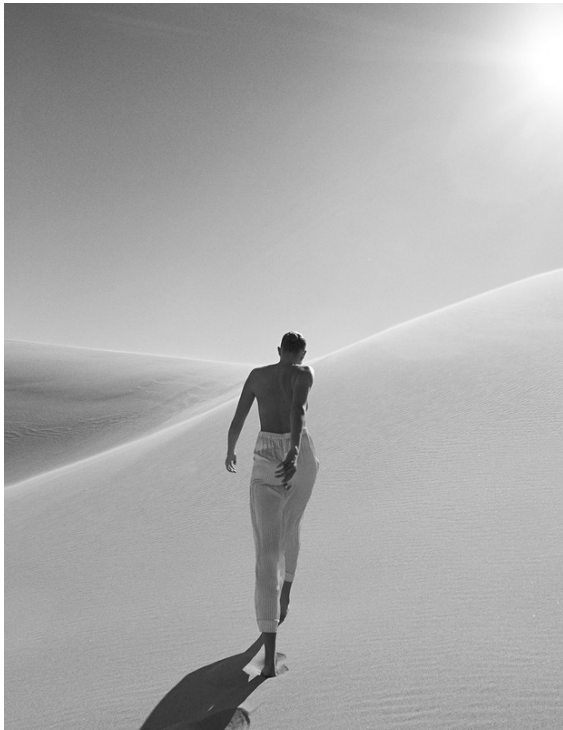
Art Department



Samantha Traina

www.art-dept.com

Art Department



Samantha Traina

www.art-dept.com

Art Department



Samantha Traina

www.art-dept.com

Art Department



Samantha Traina

www.art-dept.com

Art Department



Samantha Traina

www.art-dept.com

Art Department



Samantha Traina

www.art-dept.com

Art Department



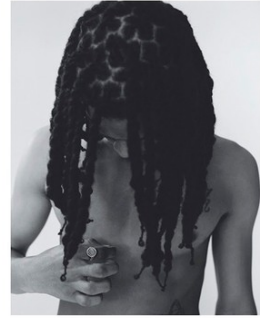
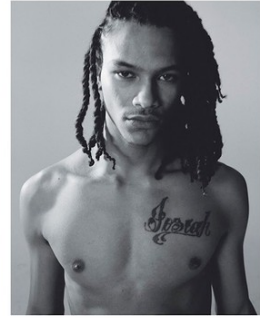
MILLA PAVINA ACCORIO.
MILLA JOE, GEMELLI BOUTIQUE.

GEMELLI SAVIGNINI FERRARIO.
FRANZONI JOE TONINO.

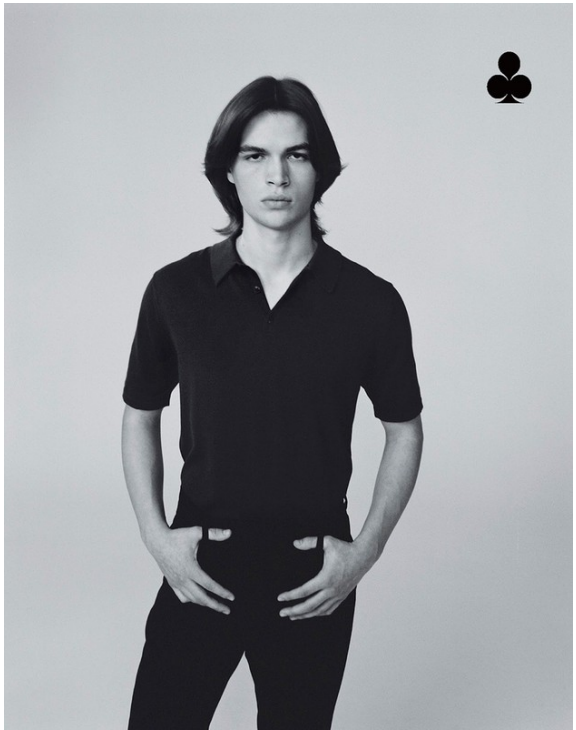
Samantha Traina

www.art-dept.com

Art Department



MICHELLE LINCH & WHELER OF SOHO;
DALLAS (FROM AMERICAN MUSIC) OF DEPT. 5;
RYAN GAGAN, PHOTON PROJECT;
DEPT. 5 (FROM THE FASHION & P.C. OF
DEPT. 5); PHOTON PROJECT;
PHOTON PROJECT; PHOTON PROJECT;
PHOTON PROJECT; PHOTON PROJECT;
PHOTON PROJECT; PHOTON PROJECT;
PHOTON PROJECT; PHOTON PROJECT;



Samantha Traina

www.art-dept.com

Art Department



Samantha Traina

www.art-dept.com

Art Department



Samantha Traina

www.art-dept.com

Art Department



photos, left to right:
© 2011 by A.P.C.
created by KRIS VAN ASSCHE FW11
styling
jeans from A.P.C.; boots from RED WING



Samantha Traina

www.art-dept.com

Art Department



Samantha Traina

www.art-dept.com

Art Department



Samantha Traina

www.art-dept.com

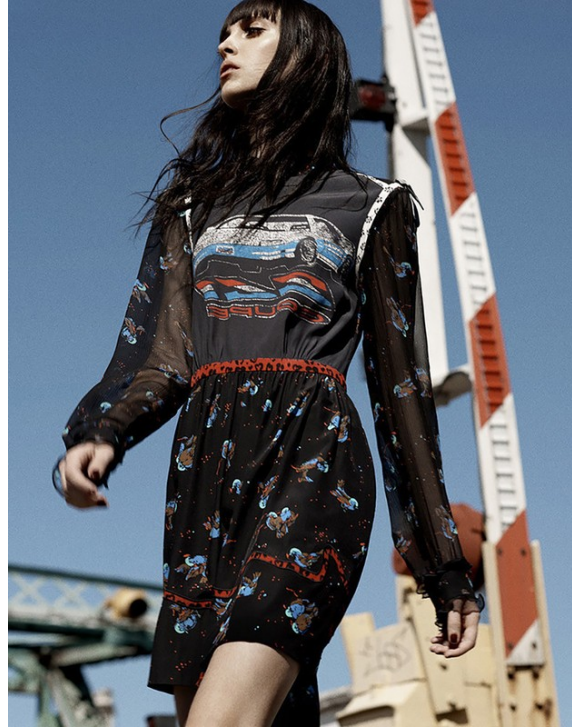
Art Department



Samantha Traina

www.art-dept.com

Art Department



Samantha Traina

www.art-dept.com